

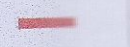


LEGEND:

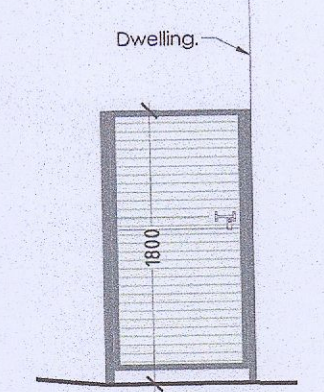
-  POSITION OF SITE NOTICE
-  OVERALL LAND OWNERSHIP OF APPLICANT IN BLUE
-  SUBJECT SITE OUTLINED IN RED



Proposed Site Plan : 1:250

Site Area = 843 Msq

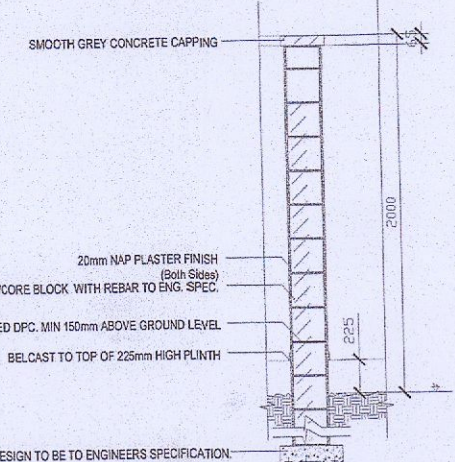
- NOTE:**
- ALL SERVICES, LEVELS AND STRUCTURE TO ENGINEERS DETAILS/SPECIFICATION.
 - SEE SITE PLAN FOR FFL & ORIENTATION OF UNITS
 - NOT FOR CONSTRUCTION PURPOSES.



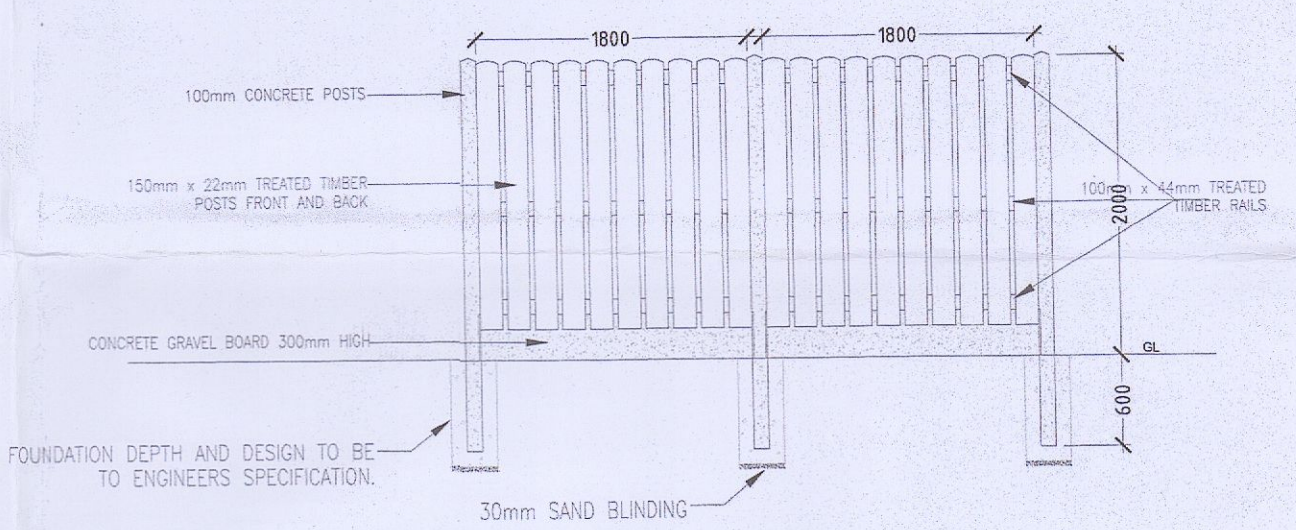
TYPICAL WALL DETAIL - TYPE NO. 1
SCALE 1:50

WALL TYPE - SIDE GATE ELEVATION:

Side gates to dwellings to be made from galvanised steel and Acetylated Timber infill. 75x50mm galvanised steel frame bolted to walls. Frame in galvanised steel angle 75x50mm complete with sliding and receiver to take padlock. Acetylated Timber infill 75x40mm boards fixed with secondary angle. Incl. for oil fix fittings required. All steel to be polyester powder coating over hot dip galvanised.

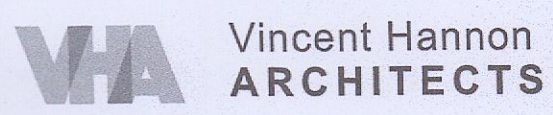


TYPICAL WALL DETAIL - TYPE NO. 2
SCALE 1:50



TYPICAL FENCE DETAIL - TYPE NO. 3
SCALE 1:50
2m Hill and Miss timber fence

A B P

Rev	Description	By	Date
			
Client: Pathway Homes Ltd. Project: Proposed Residential Development at Knocklyon, Co. Dublin		Galway Office Suite 4, Cloch Mhille, Dublin Road, Galway P: 091-465934 E: info@vha.ie	
Drawing Description: Proposed Boundary Treatments		Silgo Office Abbey Street, Silgo P: 071-9150022 W: www.vha.ie	
Status: Appeal		Scale: 1:250/50	
Date: Sept 2022		Drawing No: 180201-3-103	
Drawn by: SM		Rev: P1	
Checked by: JC		If in doubt ask.	