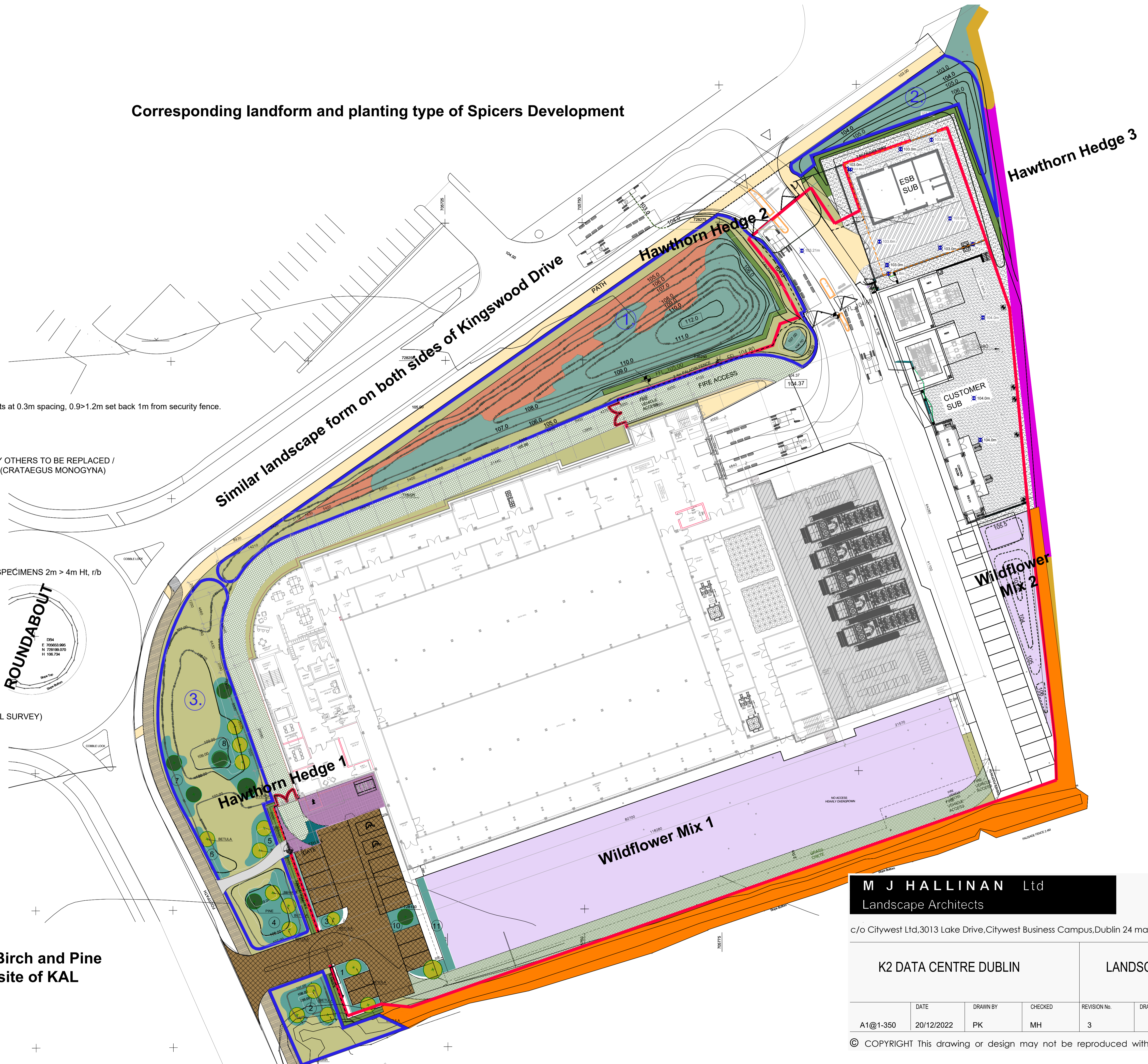


Corresponding landform and planting type of Spicers Development

1. EXISTING TREE GROUP
NO 1 (see arboriculturist report)
194 LIN. M
 2. MOWN GRASS
1 500 SQ M
 3. WILDFLOWER MIX
1 970 SQ M
 4. 20cm WIDE PAVIOURS AT 45°
610 SQ M
 5. >12 SHBRUB PLANTING AREAS
455 SQ M
 6. REINFORCED GRASS
738 SQ M
 7. INSITU CONCRETE PATH
 8. GRANITE PAVING 600x900x60
66 SQ M
 9. DECIDUOUS WOODLAND
381 SQ M
 10. CONIFEROUS WOODLAND
1 013 SQ M
 11. PROPOSED CONTOURS
 12. HEDGE : CRATAEGUS MONOGYNA
feathered plants 6 per lin m staggered plants at 0.3m spacing, 0.9>1.2m set back 1m from security fence.
169 lin metres
 13. EXISTING MATURE HEDGEROW 2m
(protected before site commenced)
 14. SECTION OF HEDGEROW REMOVED BY OTHERS TO BE REPLACED /
REPLANTED WITH HAWTHORN HEDGE (CRATAEGUS MONOGYNA)
83 lin. m
 15. SECURITY FENCE LINE
 16. PEDESTRIAN GATE
 17. PINUS SYLVESTRIS +/-or PINUS NIGRA SPECIMENS 2m > 4m Ht, r/b
 18. BETULA UTILIS MULTISTEMS 3-4m Ht
 19. CEDAR
 20. ACER PALMATUM
 21. FOR EXISTING TREES (SEE ARBORICAL SURVEY)
 - 22.
-
1. 1 570 SQ M
 2. 232 SQ M
 3. 857 SQ M
 4. 180 SQ M

Extention of landscape type Birch and Pine species as with the adjacent site of KAL



M J HALLINAN Ltd
Landscape Architects

c/o Citywest Ltd, 3013 Lake Drive, Citywest Business Campus, Dublin 24 martin.hallinan@mac.com

K2 DATA CENTRE DUBLIN				LANDSCAPE MASTER PLAN	
DATE	DRAWN BY	CHECKED	REVISION No.	DRAWING NO.	
20/12/2022	PK	MH	3	2022/02/01	

© COPYRIGHT This drawing or design may not be reproduced without permission