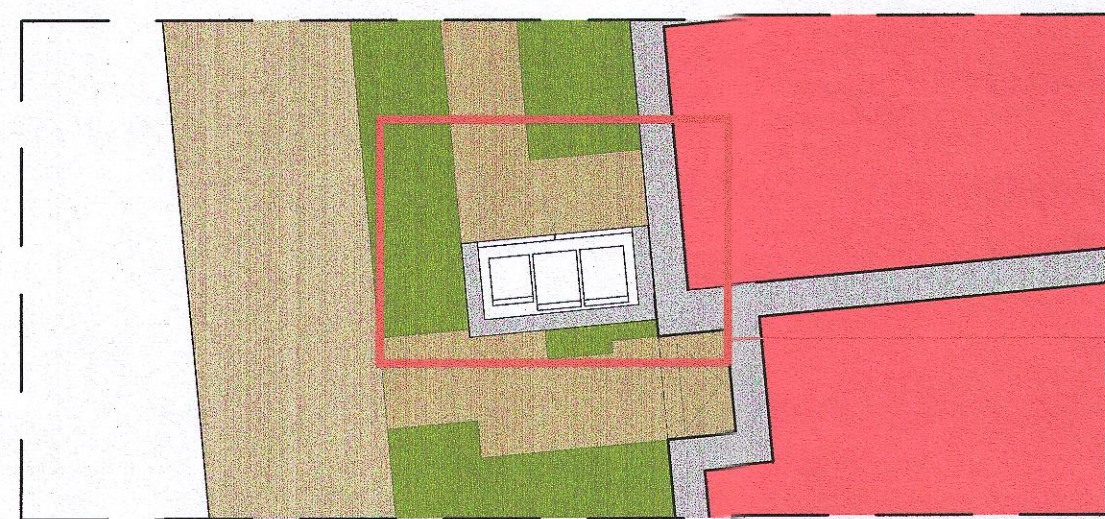


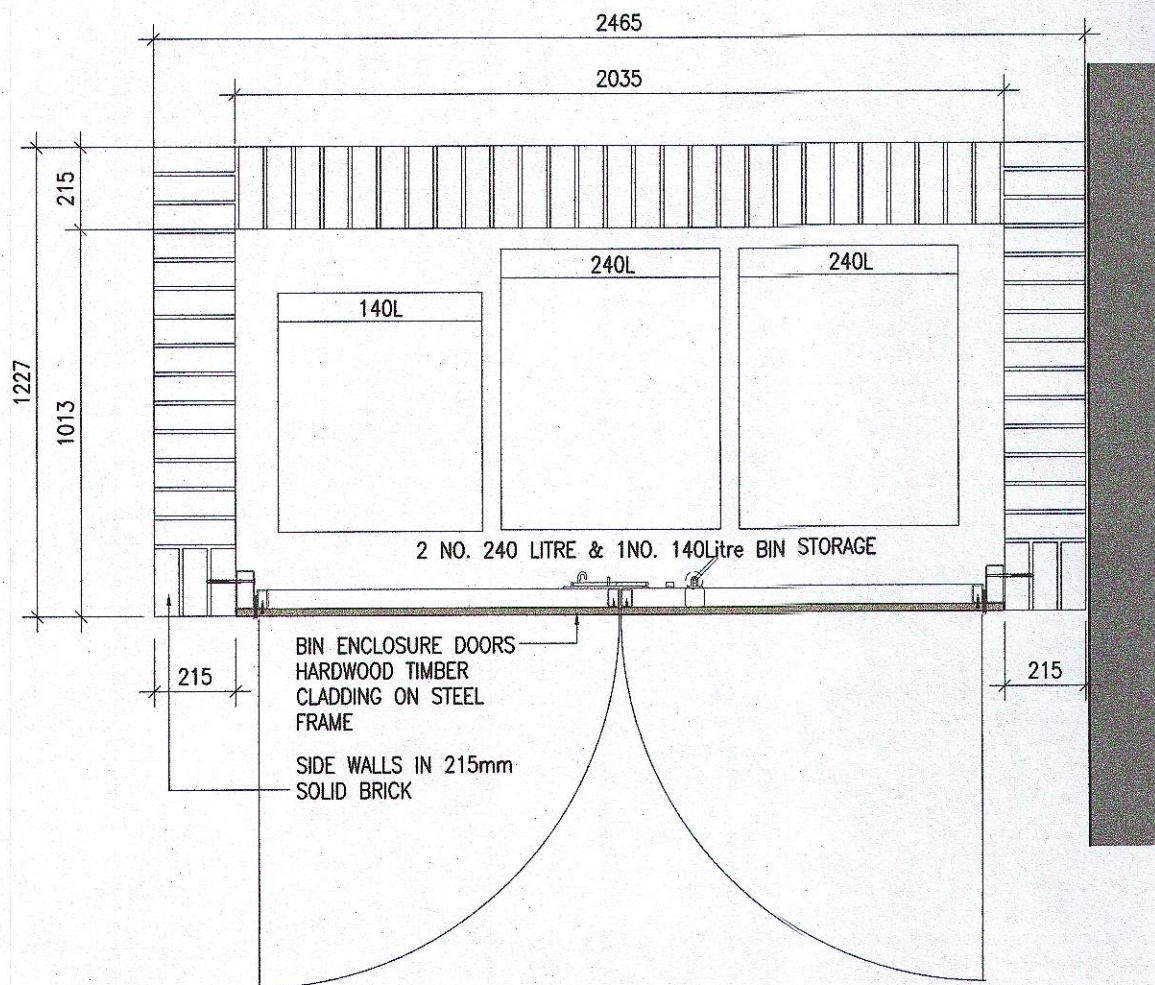
SAMPLE LOCATION PLAN 1:100



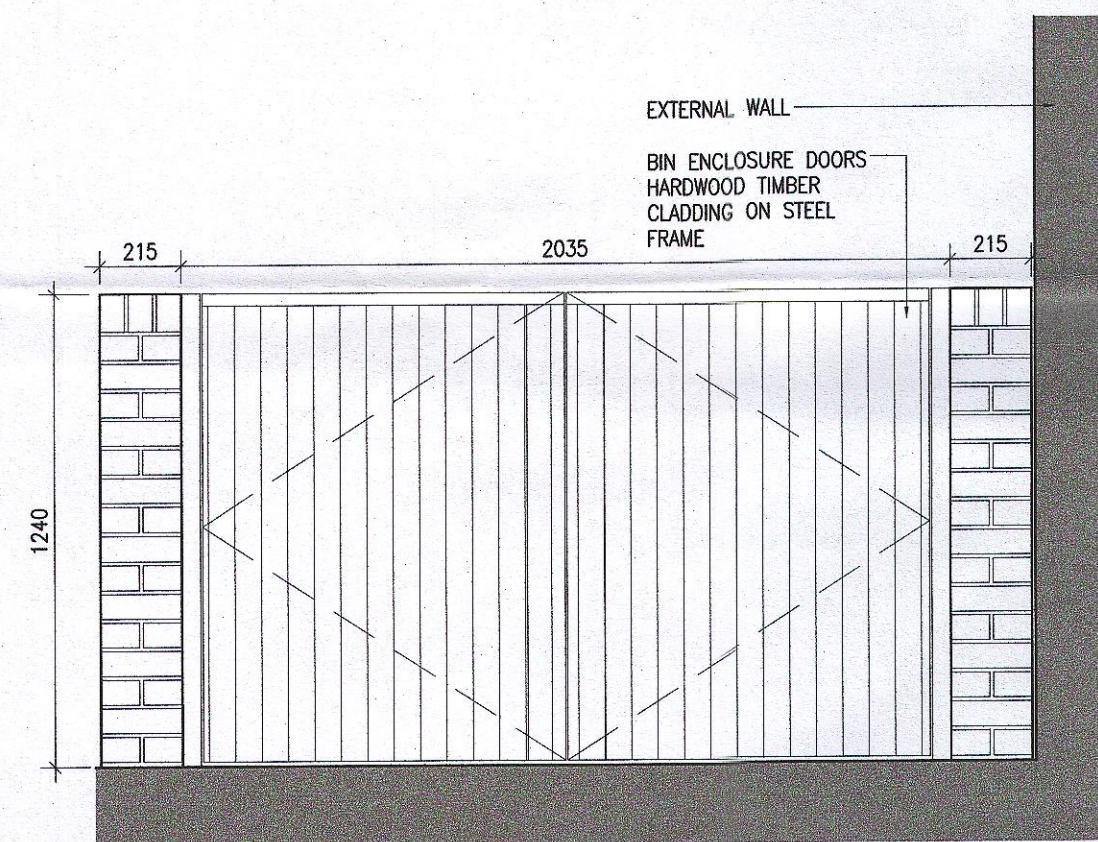
**TYPE 1**

House Unit Type:  
B2,C2,D2,E2

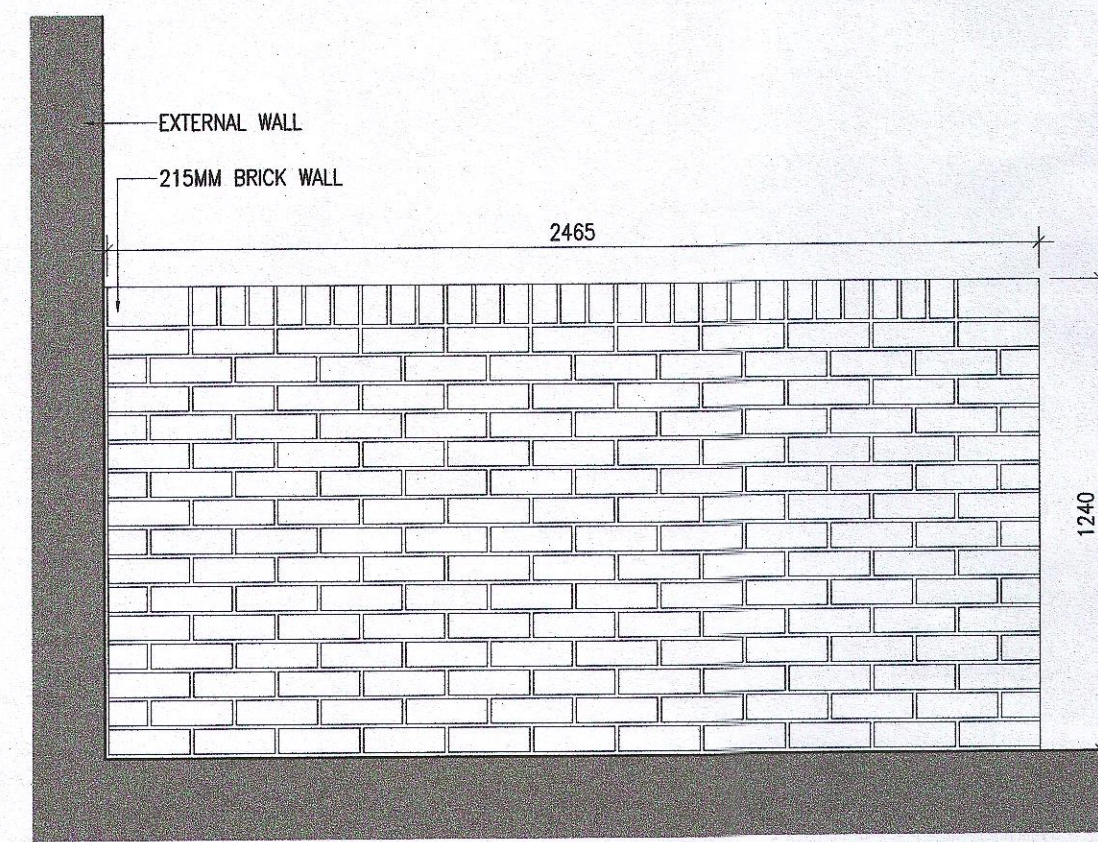
TYPE 1



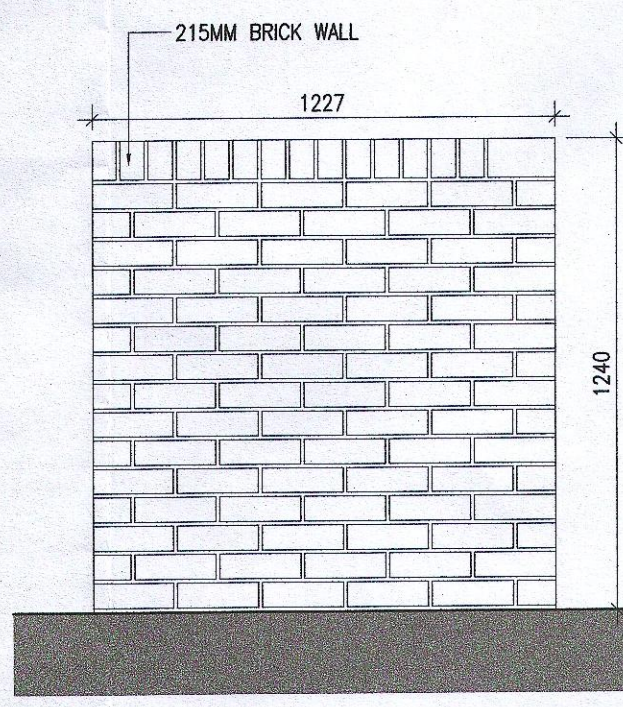
1 Bin store Type 1 Plan  
Scale 1:20



2 Bin store Type 1 Front Elevation  
Scale 1:20

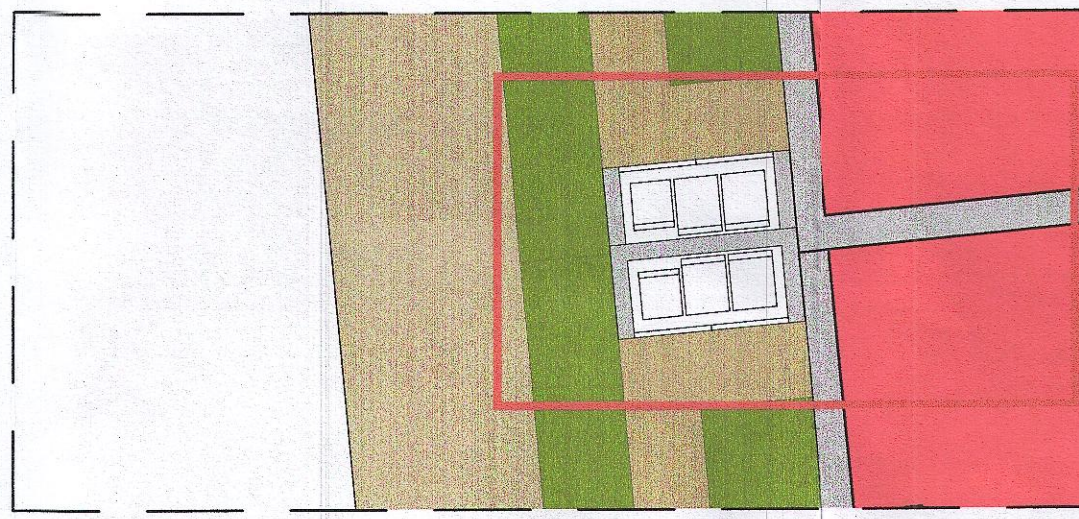


3 Bin store Type 1 Rear Elevation  
Scale 1:20



4 Bin store Type 1 Side Elevation  
Scale 1:20

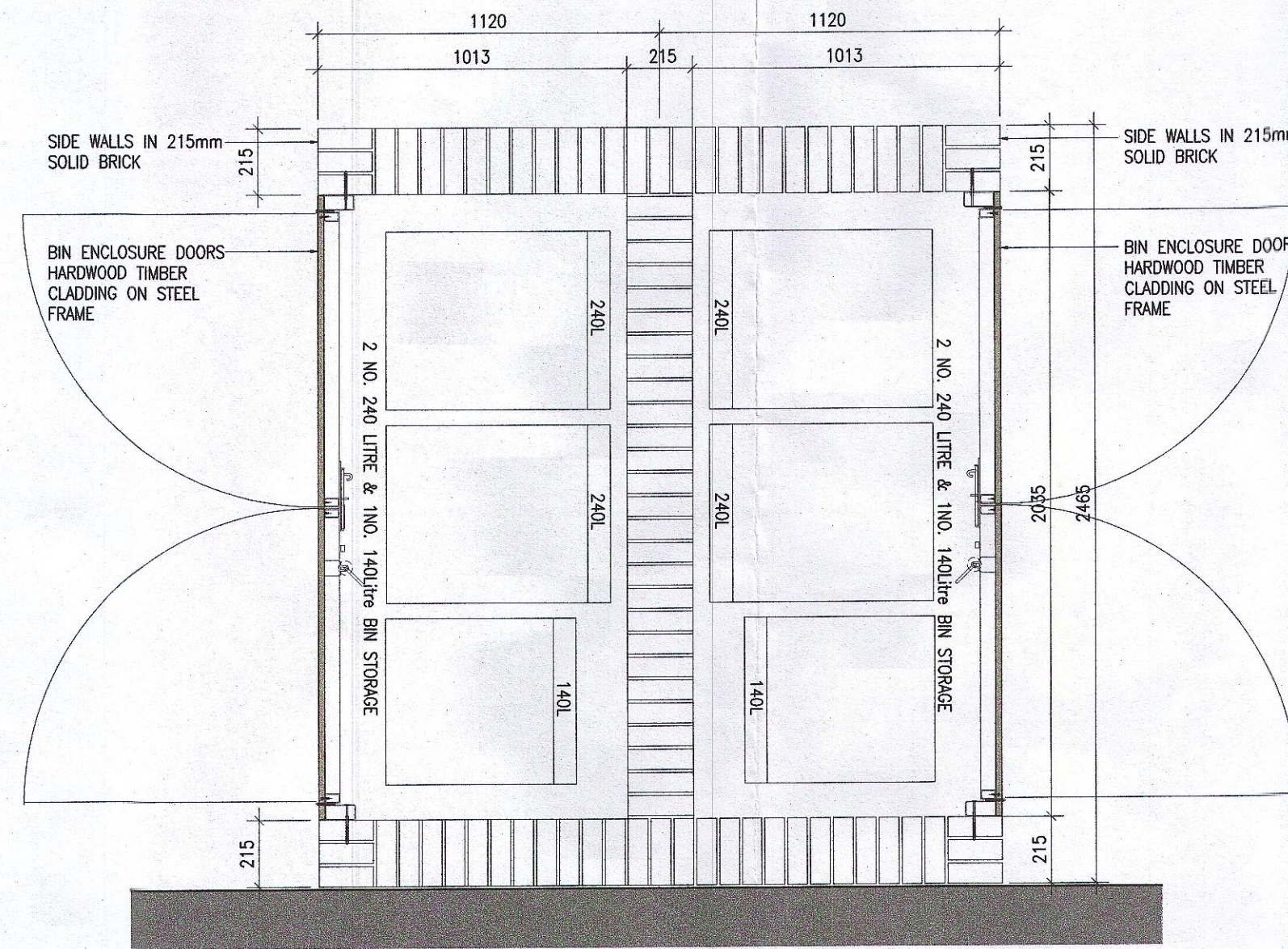
SAMPLE LOCATION PLAN 1:100



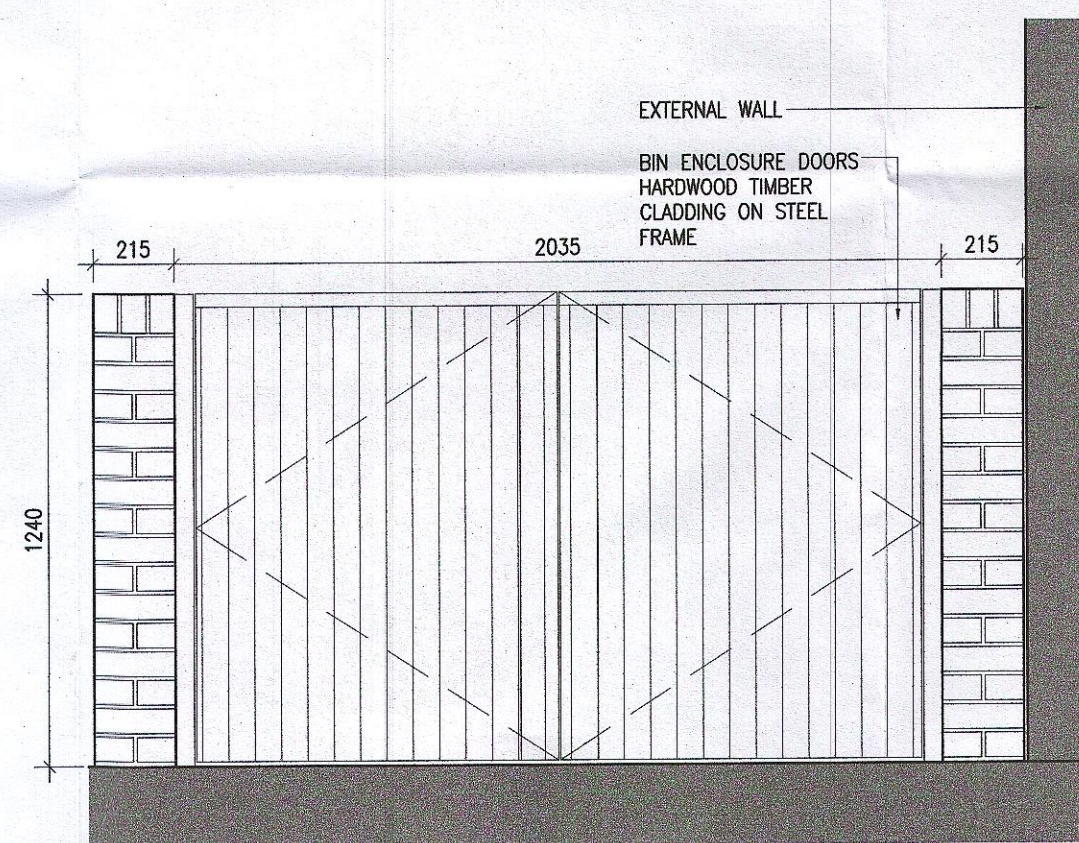
**TYPE 2**

Duplex Type:  
L/M  
House Unit Type:  
A1,D1,E1,F

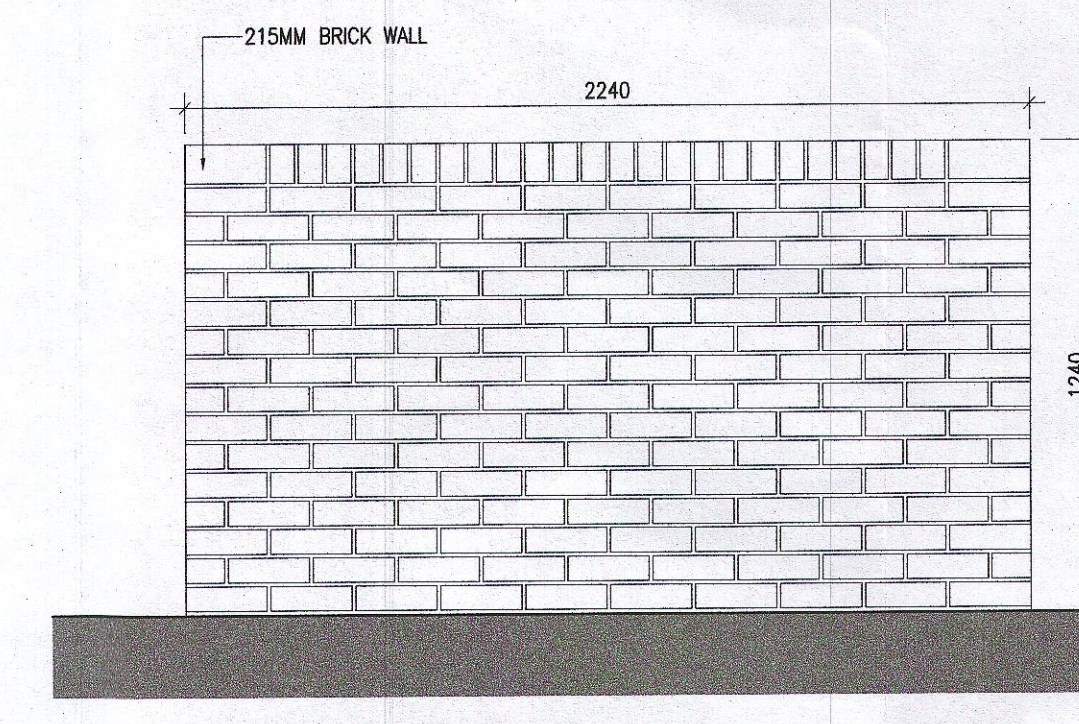
TYPE 2



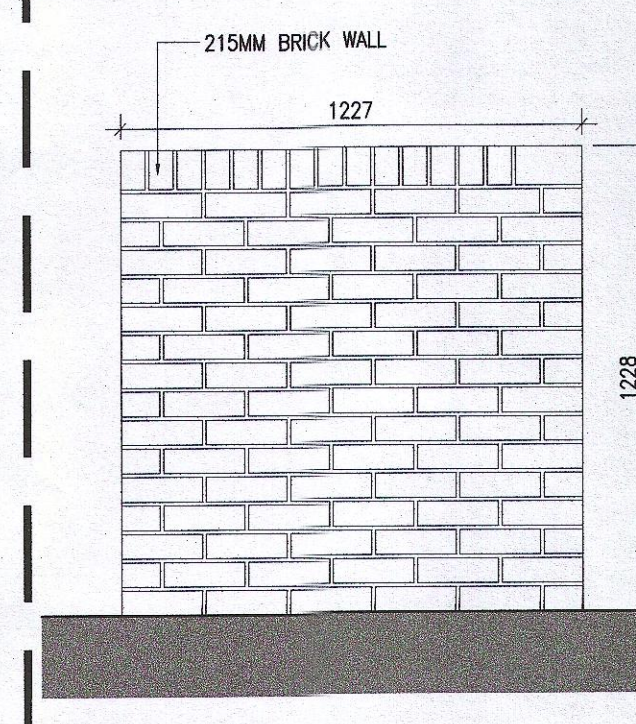
1 Bin store Type 2 Plan  
Scale 1:20



2 Bin store Type 2 Side Elevation  
Scale 1:20

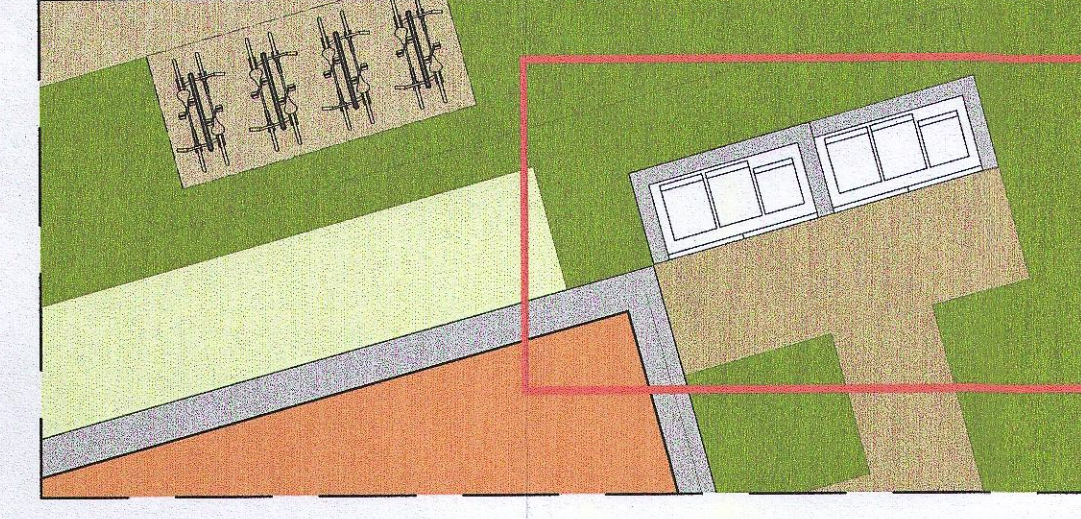


3 Bin store Type 2 Front  
Scale 1:20



3 Bin store Type 2 Side Elevation  
Scale 1:20

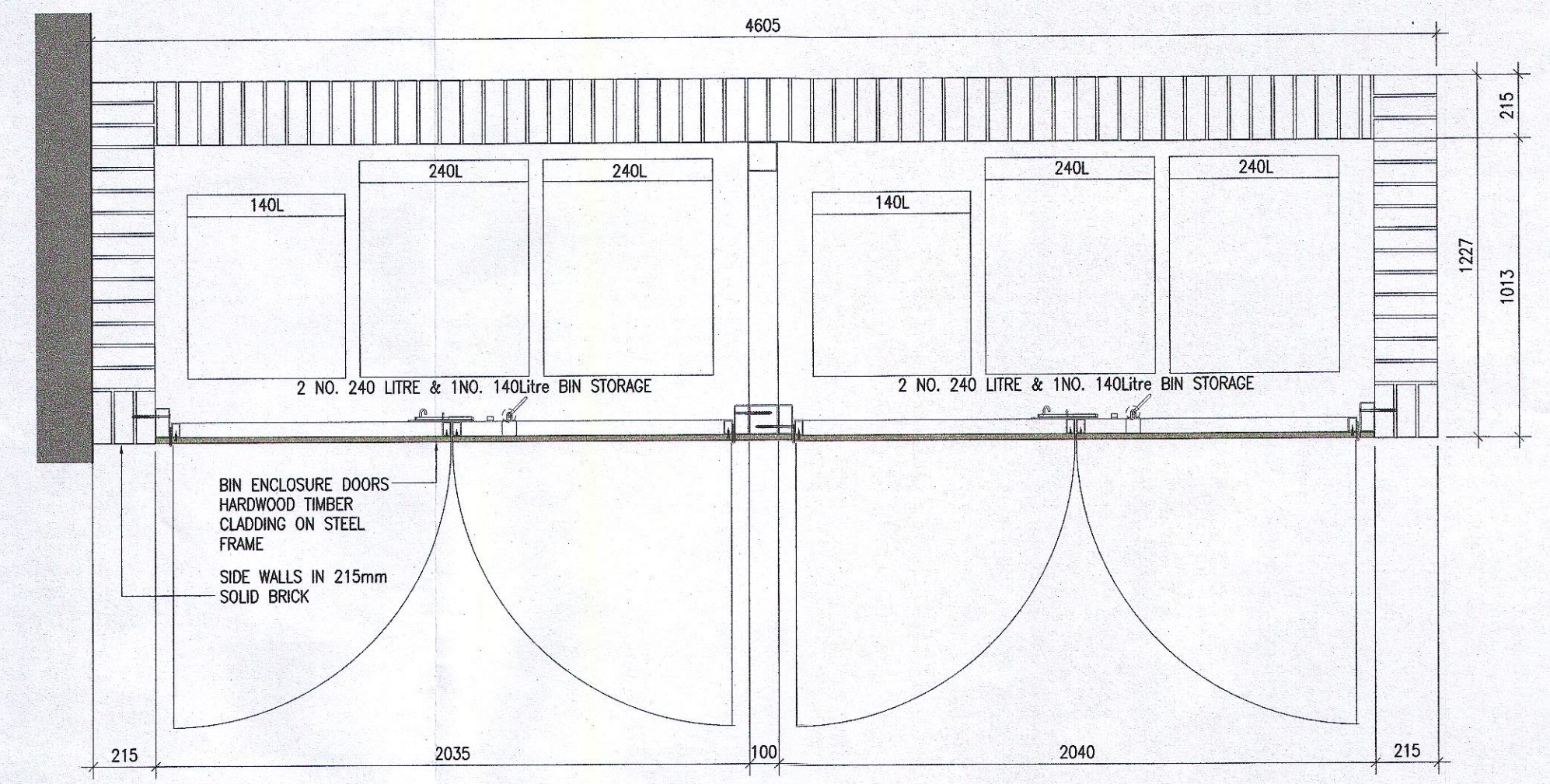
SAMPLE LOCATION PLAN 1:100



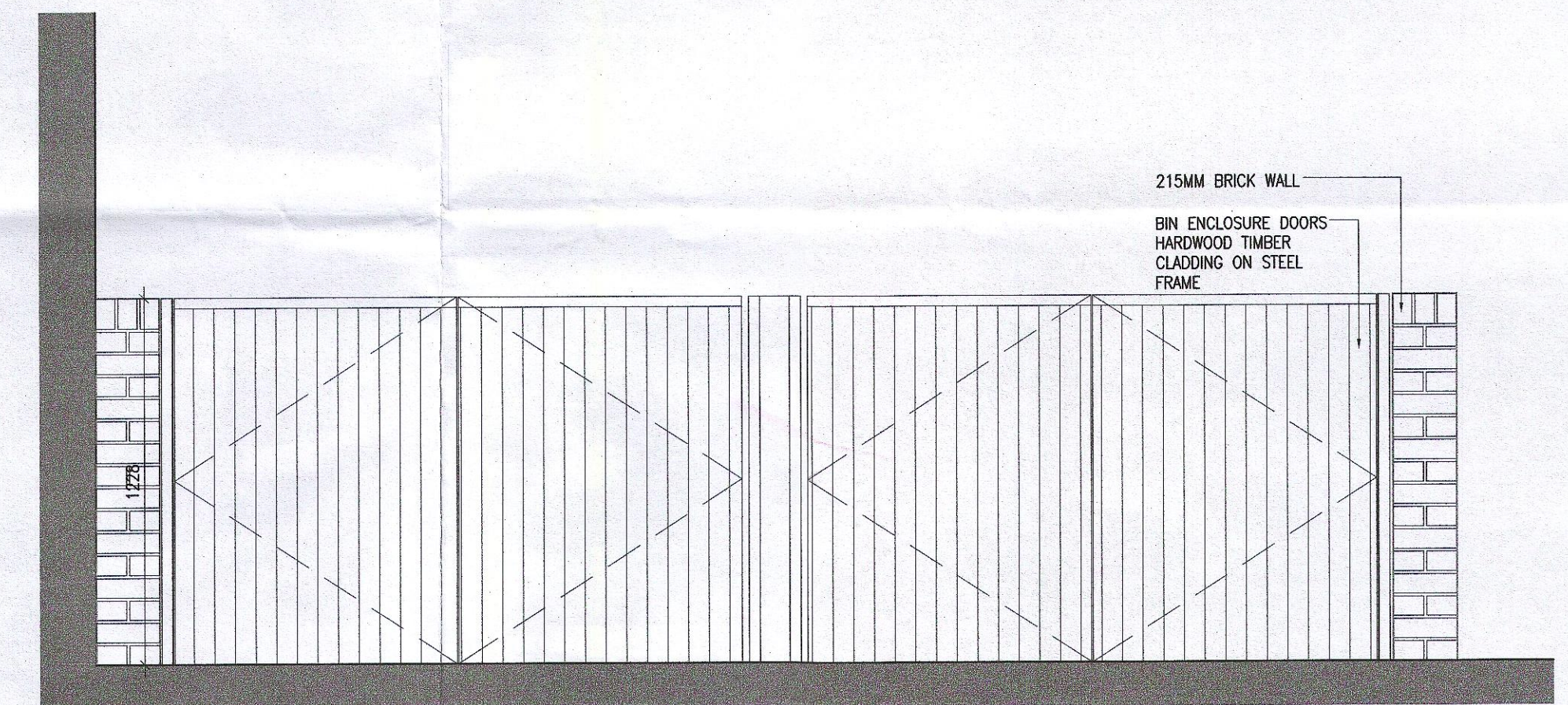
**TYPE 3**

Duplex Type:  
O/P

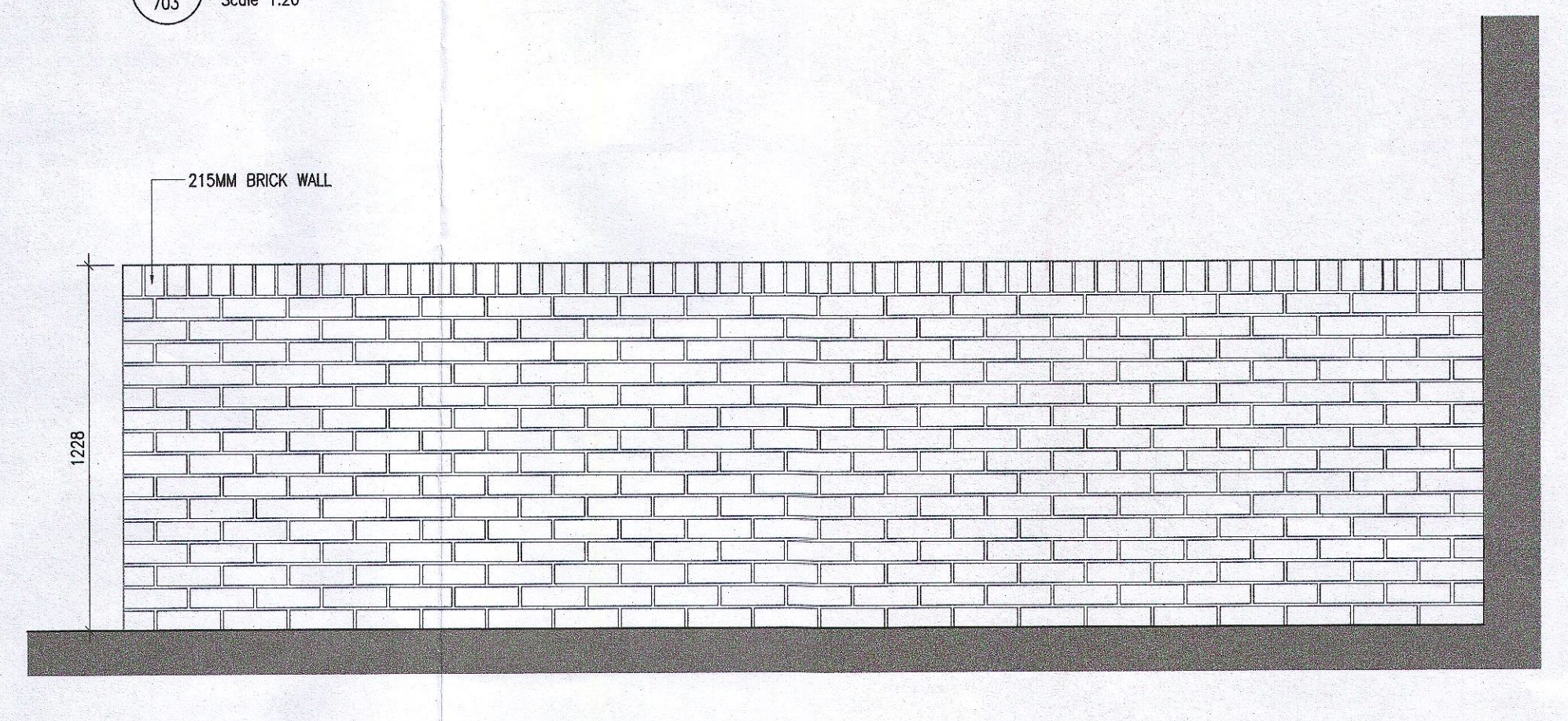
TYPE 3



1 Bin store Type 3 Plan  
Scale 1:20



2 Bin store Type 3 Front Elevation  
Scale 1:20



4 Bin store Type 3 Rear Elevation  
Scale 1:20

- Notes
- Copyright Reserved
  - Work to figured dimensions only. Do not scale drawing
  - The contractor is responsible for checking all levels and dimensions on site and shall refer all discrepancies to the Architect
  - Where appropriate for details of c. structure, or mechanical and electrical details, see Engineers drawings
  - Proprietary items shall be fixed in strict accordance with manufacturers instructions
  - Sizes of proprietary items shall be checked with manufacturer
  - The contractor shall be responsible for the coordination of structure, finishes and services.

Issue Status	No.	Date	Revision	Initials
Progress				
Planning Application				
Fire Cert				
Disability Cert				
Tender				
Construction				
As Built				
Information Only				

No.	Date	Revision	Initials
01	27/01/23	Planning Application	RT

Project	Adamstown Extension - Clonburris SDZ Residential Development
Drawing Title	Bin store Details Type 1, 2 and 3
Drawing No	6268-P-703
Scale	1:20@A1
Rev	01
Drawn	RT
Date	Jan' 23

6-7 HARCOURT TERRACE, DUBLIN 2, IRELAND  
 T +353-1-818 2400 F +353-1-678 7385  
 architecture@bkd.ie  
**bkd architects**  
 BURKE-KENNEDY DOYLE