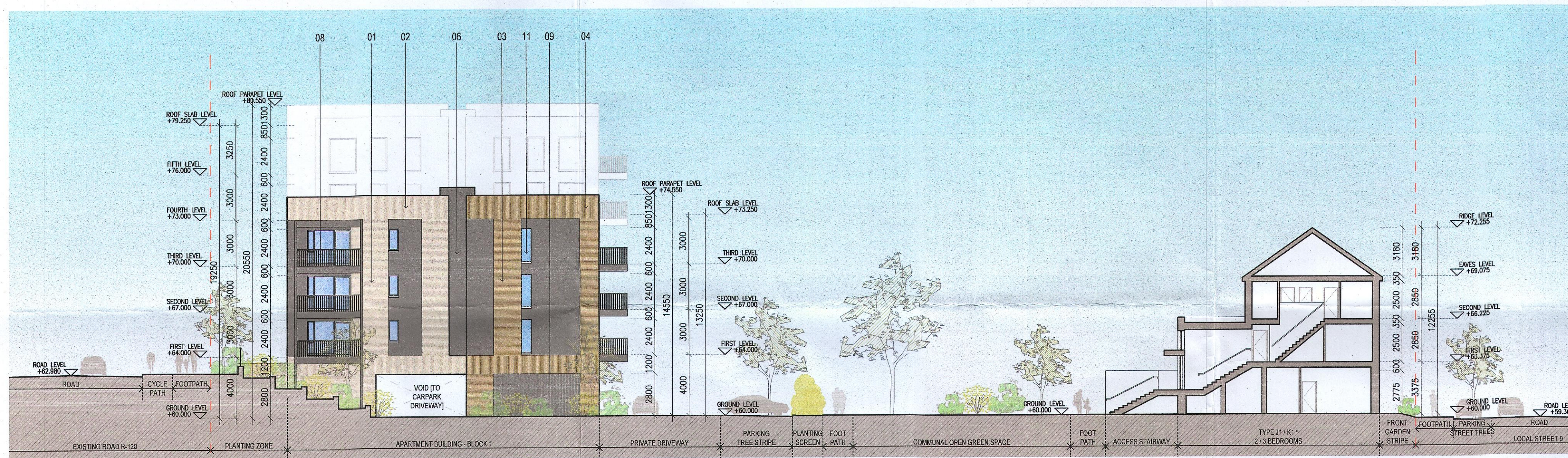
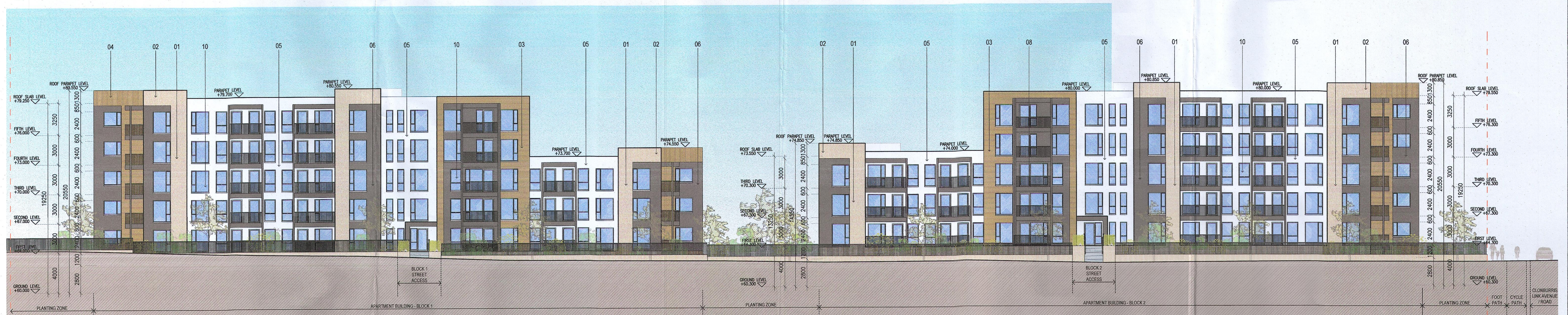


01 Proposed North Elevation  
1:200 @ A1



02 Proposed Internal South Elevation  
1:200 @ A1



03 Proposed West Elevation  
1:200 @ A1

**MATERIAL CODE LEGEND**

- 01 - BUFF BRICK - STANDARD BOND - LIGHT APPROVED TONE
- 02 - BUFF BRICK - FEATURE BOND - LIGHT APPROVED TONE
- 03 - BUFF BRICK - STANDARD BOND - BROWN APPROVED TONE
- 04 - BUFF BRICK - FEATURE BOND - BROWN APPROVED TONE
- 05 - SELF COLOURED RENDER - LIGHT APPROVED TONE
- 06 - SELF COLOURED RENDER - DARK APPROVED TONE
- 07 - CONCRETE ROOF TILES - DARK APPROVED TONE
- 08 - POWDERCOATED METALWORK OR uPVC - DARK APPROVED RAL COLOUR
- 09 - POWDERCOATED METAL SCREENING - DARK APPROVED RAL COLOUR
- 10 - CLEAR GLAZING WITH DARK APPROVED RAL COLOUR FRAMING
- 11 - OPAQUIFIED GLAZING WITH DARK APPROVED RAL COLOUR FRAMING

**EXTERNAL FINISHES**

**WALLS:** PAINTED SAND / CEMENT RENDER OR PROPRIETARY PRECOLOURED RENDER FINISH SELECTED BRICKWORK WHERE INDICATED ON DRAWINGS

**WINDOWS:** SELECTED PROPRIETARY DOUBLE / TRIPLE GLAZED WINDOW SYSTEM WITH FRAMES TO APPROVED COLOUR OBTAINED BY GLAZING TO BATHROOMS AND EN-SUITES.

**BALCONY:**

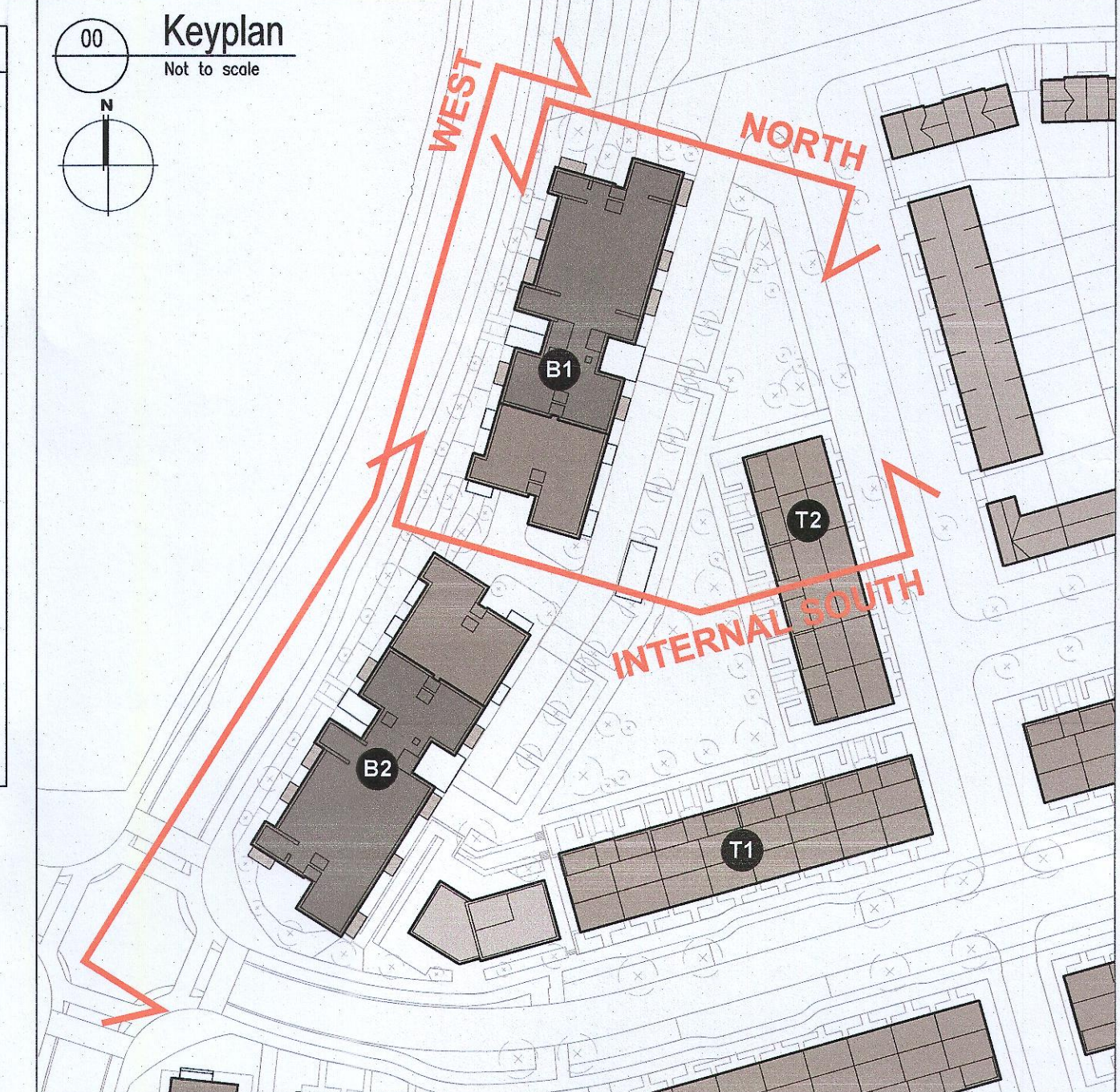
**DOORS:** SELECTED PROPRIETARY DOORS AND GLAZED SIDE SCREENS TO APPROVED COLOUR.

**RAINWATER GOODS:** uPVC OR POWDER COATED METAL GUTTERS AND RAINWATER PIPES TO SELECTED COLOUR.

**MAIN ROOF:** CONCRETE ROOF TILES IN SELECTED COLOUR.

**LOW LEVEL PROJECTION:** ZINC CANOPY TO ENTRANCE OF UNITS

**OTHER ITEMS:** uPVC OR POWDER COATED METAL FASCIAS, SOFFITS AND BARGE BOARDS PAINTED MILDSTEEL RAILINGS AND BALUSTRADES



**Notes**

- Copyright Reserved
- Work is figured dimensions only. Do not scale drawings
- The contractor is responsible for checking all levels and dimensions on site and shall refer all discrepancies to the Architect
- Where appropriate, for details of r.c. structure, or mechanical and electrical details, see Engineers drawings
- Proprietary items shall be fixed in strict accordance with manufacturers instructions.
- Sizes of proprietary items shall be checked with manufacturer.
- The contractor shall be responsible for the coordination of structure, finishes and services.

Issue Status	Progress
Planning Application	<input checked="" type="checkbox"/>
Fire Cert	<input type="checkbox"/>
Disability Cert	<input type="checkbox"/>
Tender	<input type="checkbox"/>
Construction	<input type="checkbox"/>
As Built	<input type="checkbox"/>

Information Only - Proposed

No.	Date	Revision	Initials
01	27/01/23	Planning Application	VB

**Project**  
Adamstown Extension - Clonburris SDZ  
Residential Development

**Drawing Title**  
Apartment Blocks Proposed Elevations - North, West, South Int.

**Drawing No**  
6268-P-401

**Scale**  
1:200@A1

**Rev**  
01

**Drawn**  
VB

**Date**  
20/09/22

6-7 HARCOURT TERRACE, DUBLIN 2, IRELAND  
t +353 1 616 2400 f +353 1 676 7305  
e architecture@bkd.ie  
www.bkd.ie

**bkd architects**  
BURKE KENNEDY DOYLE