

MATERIAL CODE LEGEND

01	— BUFF BRICK — STANDARD BOND — LIGHT APPROVED TONE
02	— BUFF BRICK — FEATURE BOND — LIGHT APPROVED TONE
03	— BUFF BRICK — STANDARD BOND — BROWN APPROVED TONE
04	— BUFF BRICK — FEATURE BOND — BROWN APPROVED TONE
05	— SELF COLOURED RENDER — LIGHT APPROVED TONE
06	— SELF COLOURED RENDER — DARK APPROVED TONE
07	— CONCRETE ROOF TILES — DARK APPROVED TONE
08	— POWDERCOATED METALWORK OR uPVC — DARK APPROVED RAL COLOUR
09	— POWDERCOATED METAL SCREENING — DARK APPROVED RAL COLOUR
10	— CLEAR GLAZING WITH DARK APPROVED RAL COLOUR FRAMING
11	— OPAQIFIED GLAZING WITH DARK APPROVED RAL COLOUR FRAMING

EXTERNAL FINISHES

WALLS: PAINTED SAND / CEMENT RENDER OR PROPRIETARY PRECOLOURED RENDER FINISH SELECTED BRICKWORK WHERE INDICATED ON DRAWINGS

WINDOWS: SELECTED PROPRIETARY DOUBLE / TRIPLE GLAZED WINDOW SYSTEM WITH FRAMES TO APPROVED COLOUR OBTAINED BY GLAZING TO BATHROOMS AND EN-SUITES.

BALCONY:

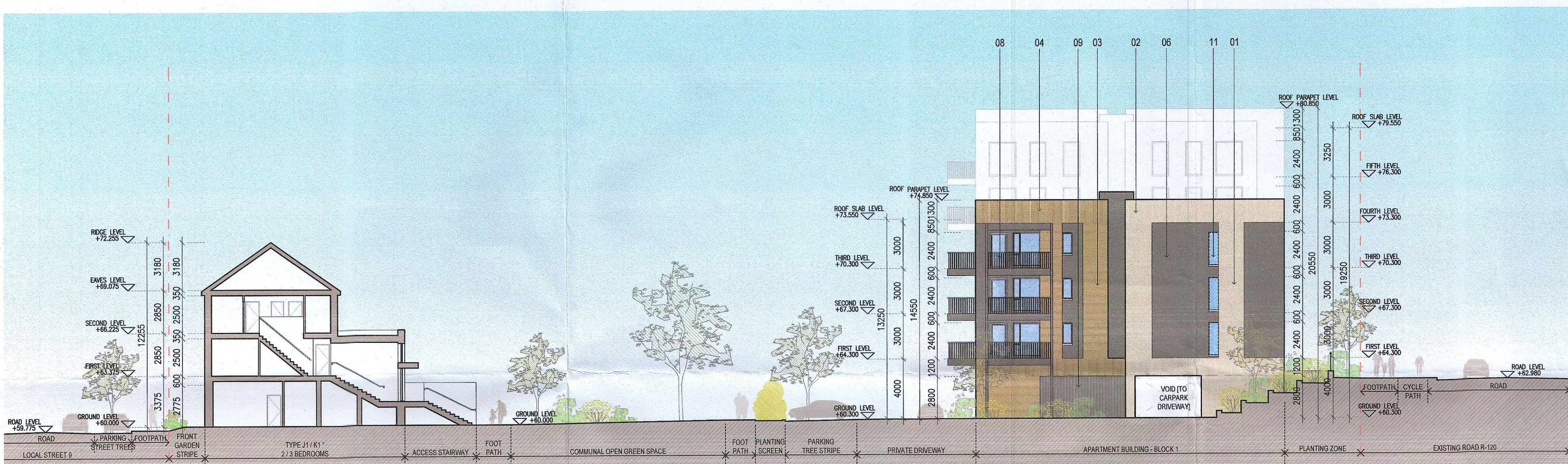
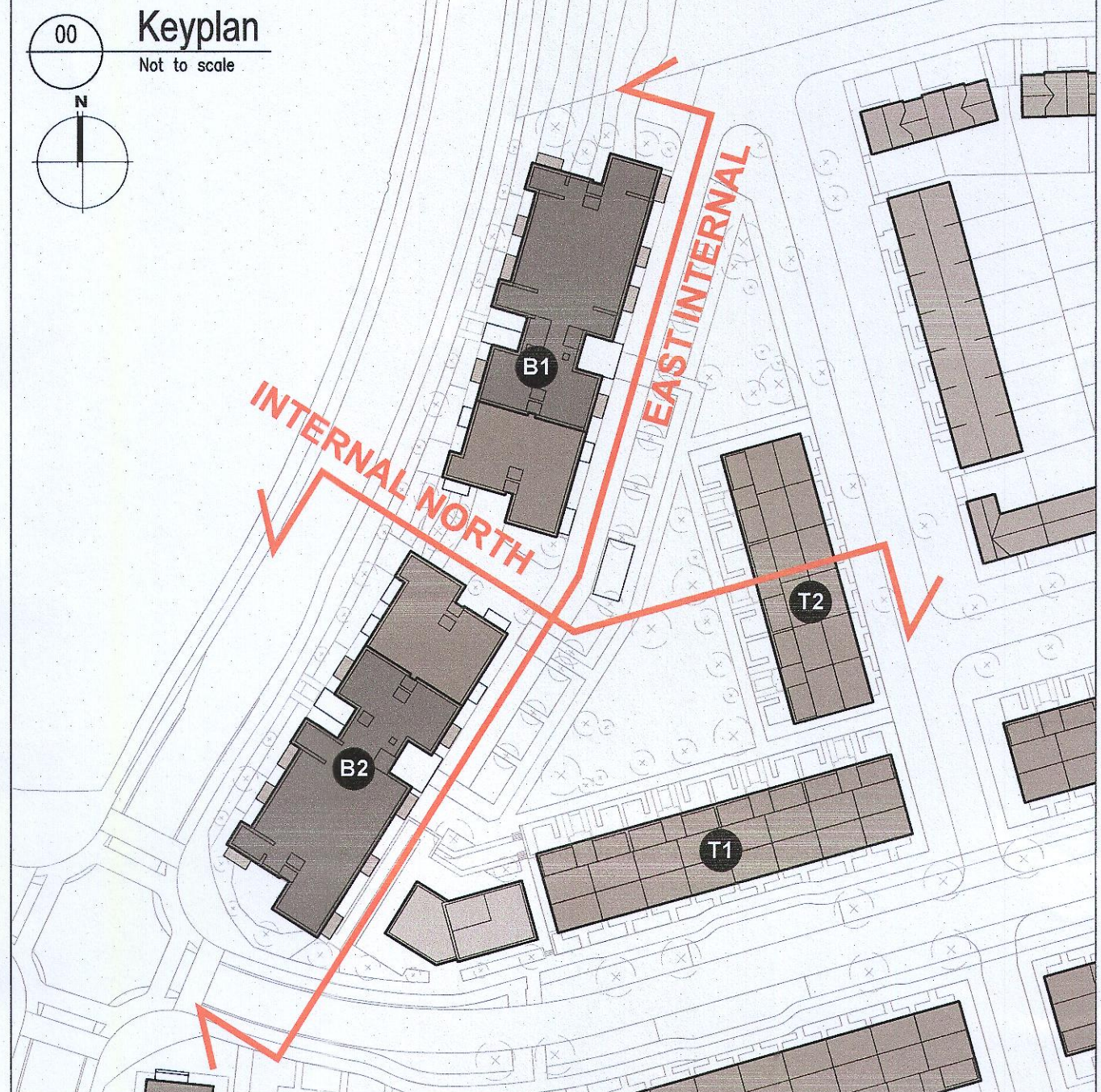
DOORS: SELECTED PROPRIETARY DOORS AND GLAZED SIDE SCREENS TO APPROVED COLOUR.

RAINWATER GOODS: uPVC OR POWDER COATED METAL GUTTERS AND RAINWATER PIPES TO SELECTED COLOUR.

MAIN ROOF: CONCRETE ROOF TILES IN SELECTED COLOUR.

LOW LEVEL PROJECTION: ZINC CANOPY TO ENTRANCE OF UNITS

OTHER ITEMS: uPVC OR POWDER COATED METAL FASCIAS, SOFFITS AND BARGE BOARDS PAINTED MILDSTEEL RAILINGS AND BALUSTRADES



01 Proposed Internal North Elevation
1:200 @ A1



02 Proposed Internal East Elevation
1:200 @ A1

Notes	Issue Status	No.	Date	Revision	Initials
1. Copyright Reserved	Progress	01	27/01/23	Planning Application	VB
2. Work to agreed dimensions only. Do not scale drawings	Planning Application				
3. The contractor is responsible for checking all levels and dimensions on site and shall refer all discrepancies to the Architect	Fire Cert				
4. Where appropriate, for details of r.c. structure, or mechanical and electrical details, see Engineers drawings	Disability Cert				
5. Proprietary items shall be fixed in strict accordance with manufacturers instructions.	Tender				
6. Sizes of proprietary items shall be checked with manufacturer.	Construction				
7. The contractor shall be responsible for the coordination of structure, finishes and services.	As Built				
Information Only - Proposed					

Project: Adamstown Extension - Clonburris SDZ Residential Development

Drawing Title: Apartment Blocks Proposed Elevations - East Int., North Int.

Drawing No: 6268-P-402

Scale: 1:200@A1 Rev: 01 Drawn: VB Date: 20/09/22

6-7 HARCOURT TERRACE, DUBLIN 2, IRELAND
t +353 1 618 2400 f +353 1 678 7385
e architecture@bkd.ie
www.bkd.ie

bkd architects
BURKE-KENNEDY DOYLE