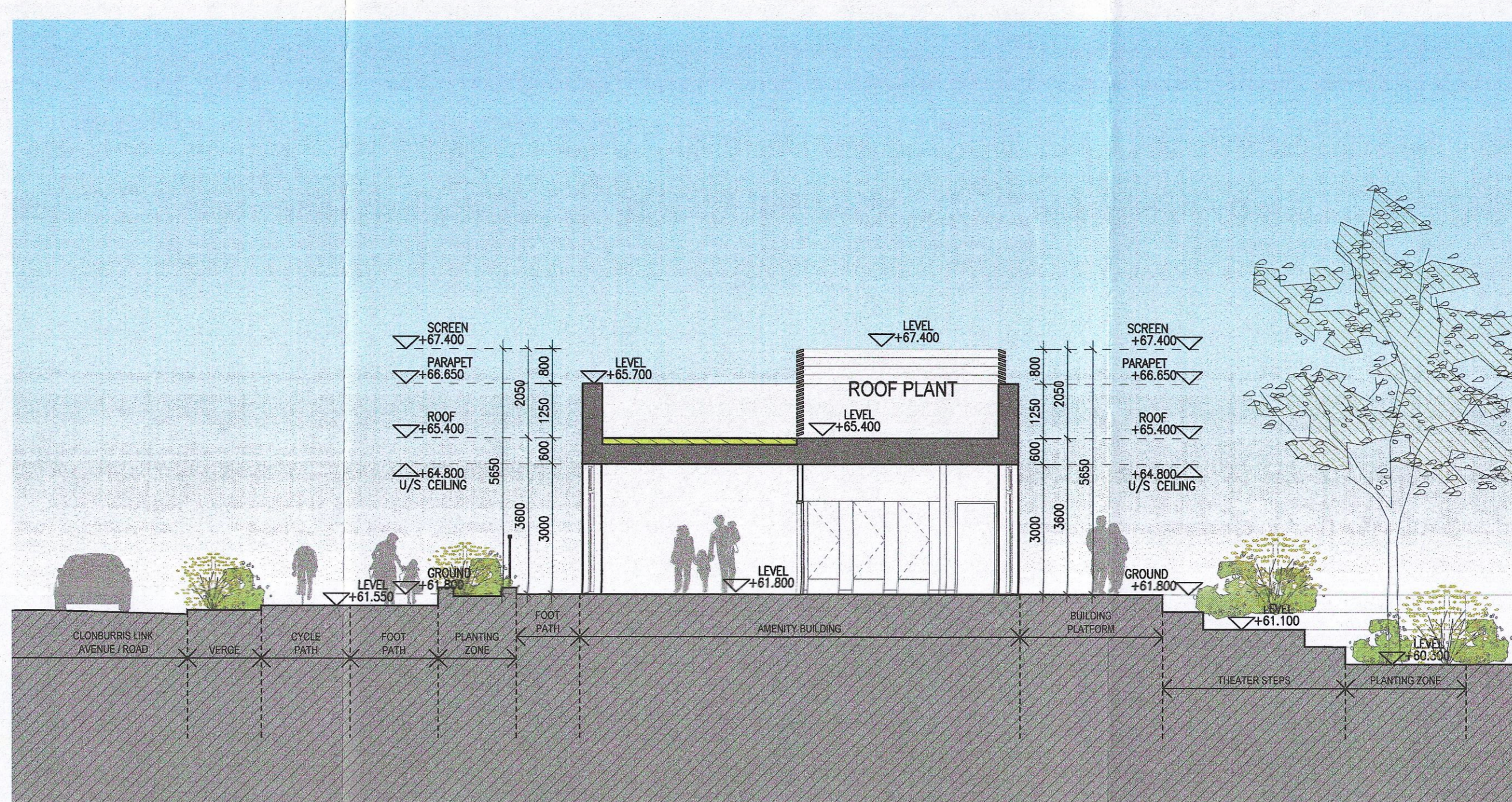
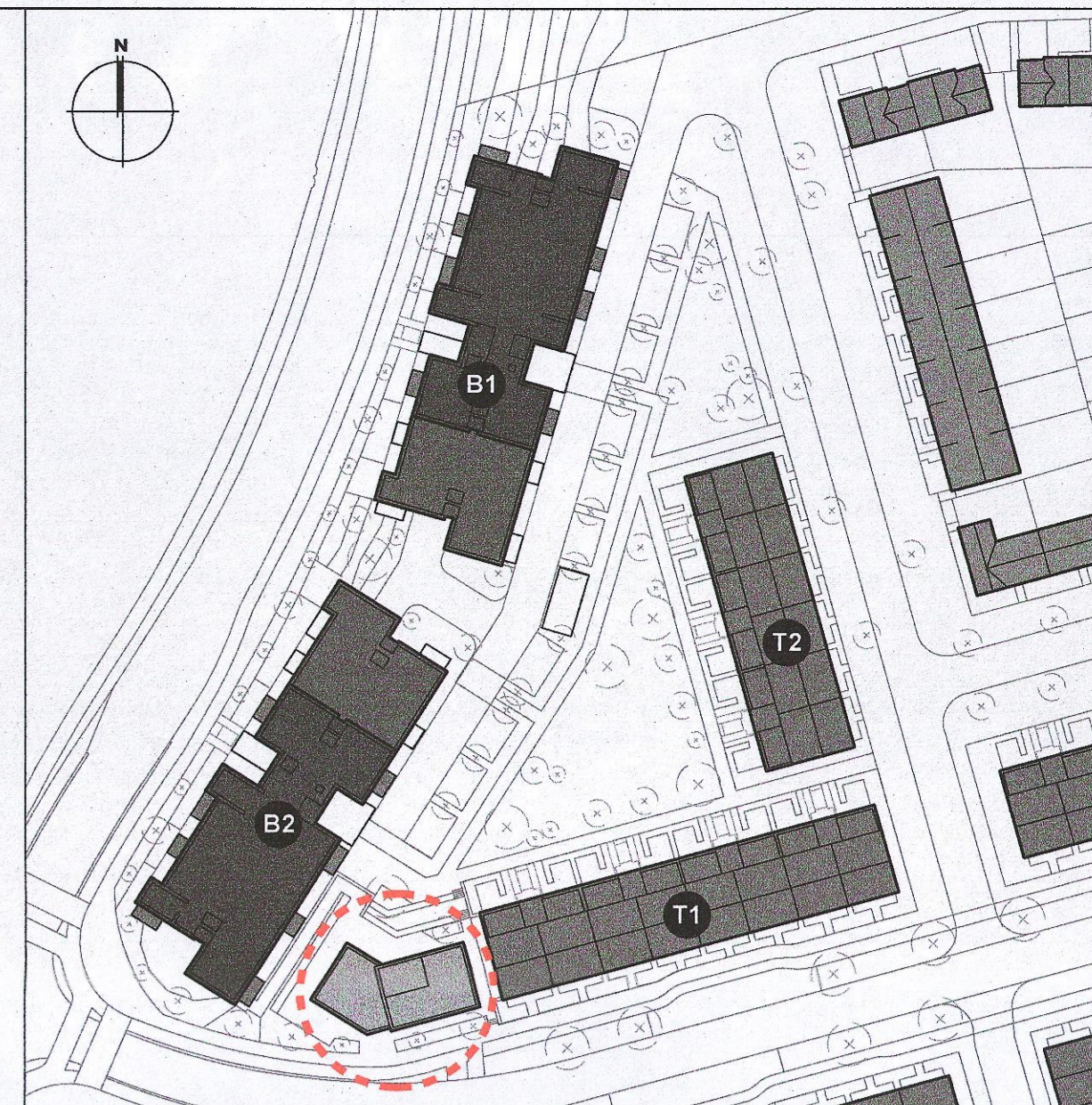


09 Amenity Building - Section B-B  
1:100 @ A0



10 Amenity Building - Section A-A  
1:100 @ A0



00 Keyplan  
Not to scale

**MATERIAL CODE LEGEND**

- 01 - BUFF BRICK - STANDARD BOND - LIGHT APPROVED TONE
- 02 - BUFF BRICK - FEATURE BOND - LIGHT APPROVED TONE
- 03 - BUFF BRICK - STANDARD BOND - BROWN APPROVED TONE
- 04 - BUFF BRICK - FEATURE BOND - BROWN APPROVED TONE
- 05 - SELF COLOURED RENDER - LIGHT APPROVED TONE
- 06 - SELF COLOURED RENDER - DARK APPROVED TONE
- 07 - CONCRETE ROOF TILES - DARK APPROVED TONE
- 08 - POWDERCOATED METALWORK OR UPVC - DARK APPROVED RAL COLOUR
- 09 - POWDERCOATED METAL SCREENING - DARK APPROVED RAL COLOUR
- 10 - CLEAR GLAZING WITH DARK APPROVED RAL COLOUR FRAMING
- 11 - OPAQUE GLAZING WITH DARK APPROVED RAL COLOUR FRAMING

**EXTERNAL FINISHES**

**WALLS:** PAINTED SAND / CEMENT RENDER OR PROPRIETARY PRECOLOURED RENDER FINISH SELECTED BRICKWORK WHERE INDICATED ON DRAWINGS

**WINDOWS:** SELECTED PROPRIETARY DOUBLE / TRIPLE GLAZED WINDOW SYSTEM WITH FRAMES TO APPROVED COLOUR OBTAINED BY GLAZING TO BATHROOMS AND EN-SUITES.

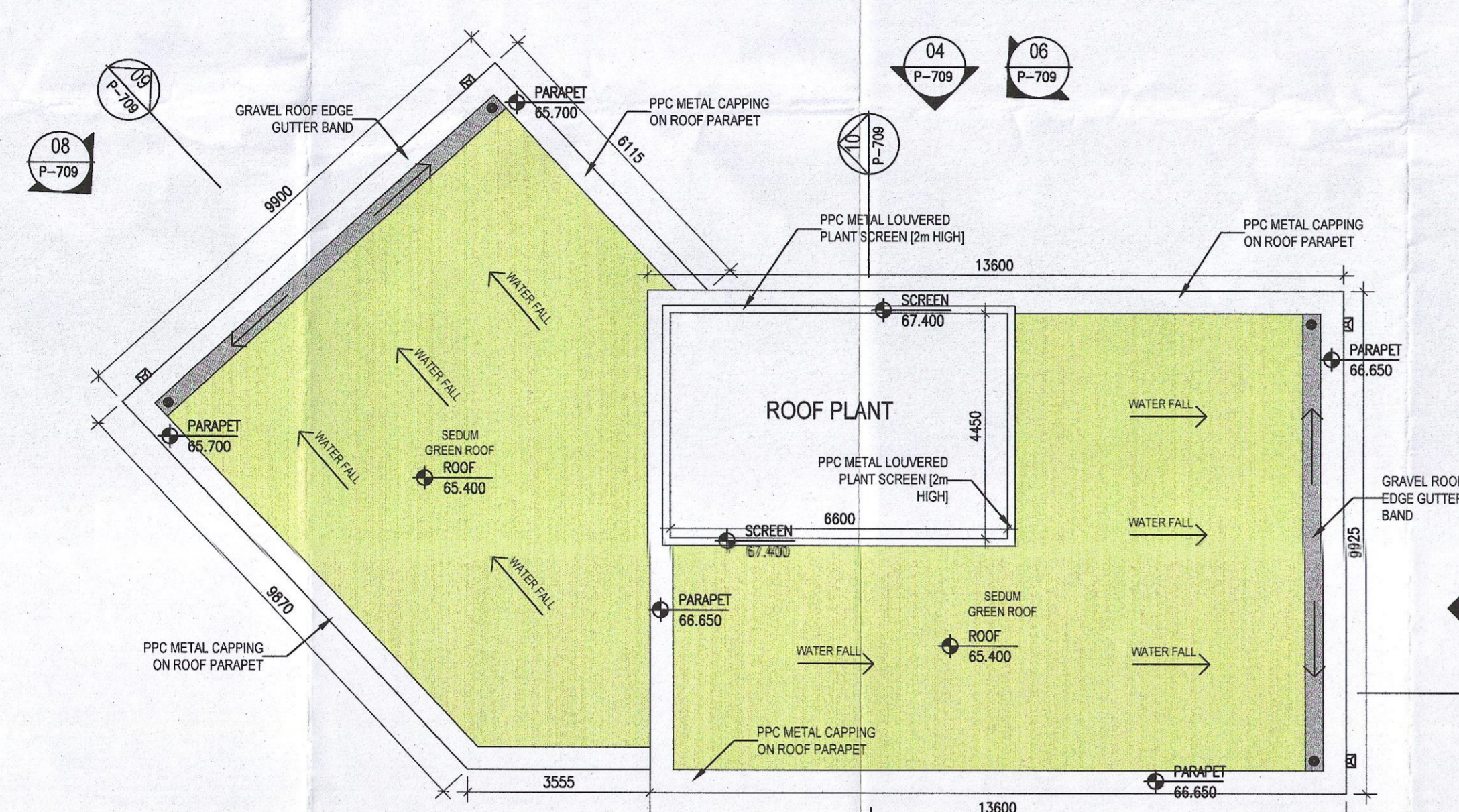
**BALCONY:**

**DOORS:** SELECTED PROPRIETARY DOORS AND GLAZED SIDE SCREENS TO APPROVED COLOUR.

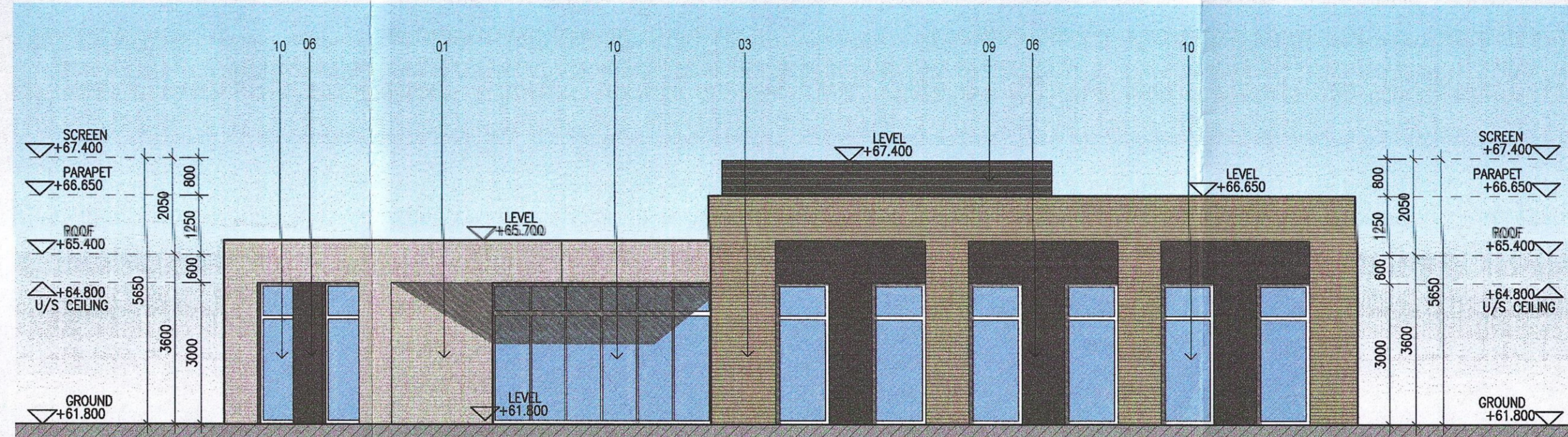
**RAINFALL:** UPVC OR POWDER COATED METAL GUTTERS AND RAINWATER PIPES TO SELECTED COLOUR.

**LOW LEVEL PROJECTION:** ZINC CANOPY TO ENTRANCE OF UNITS

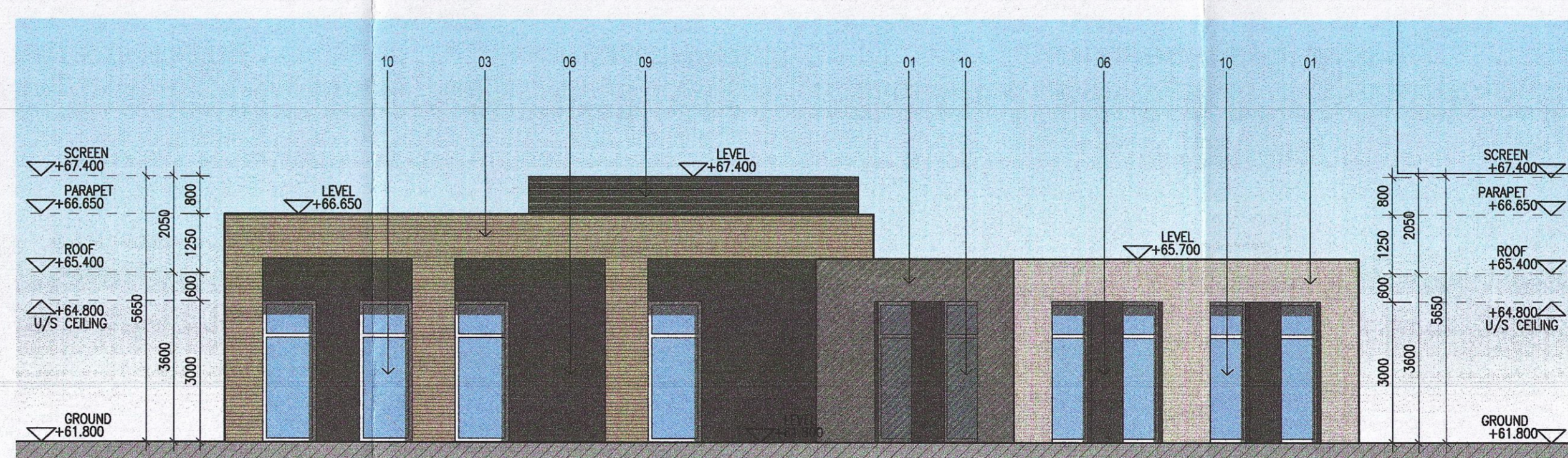
**OTHER ITEMS:** UPVC OR POWDER COATED METAL FASCIA, SOFFITS AND BARGE BOARDS PAINTED MULTISTEEL RAILINGS AND BALUSTRADES



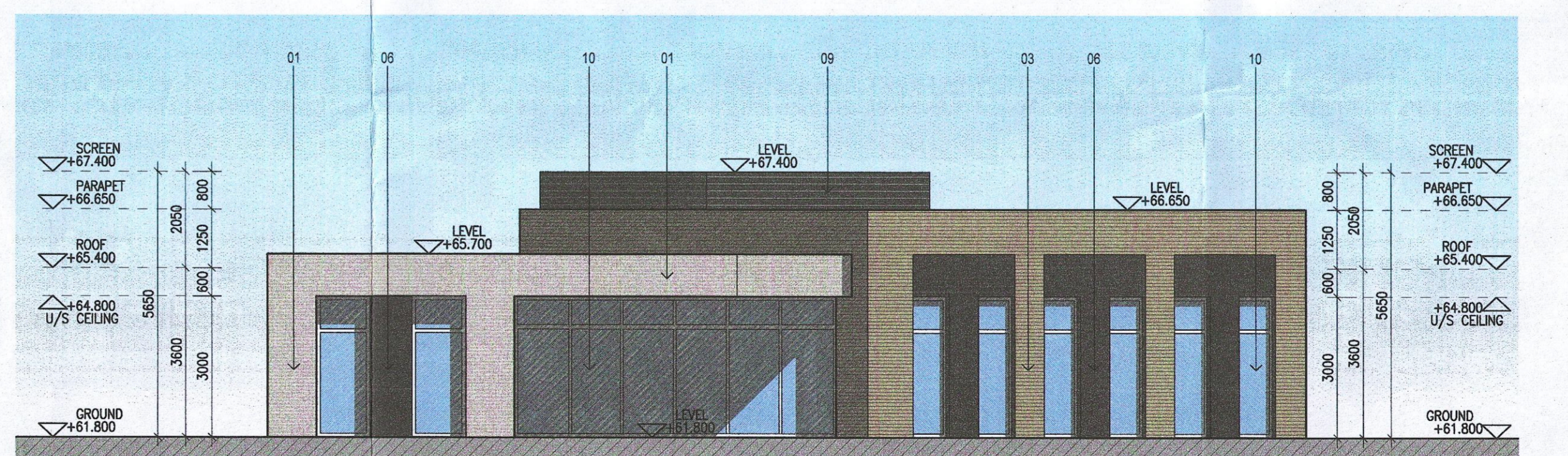
05 Amenity Building - Roof plan  
1:100 @ A0



03 Amenity building - South elevation  
1:100 @ A0



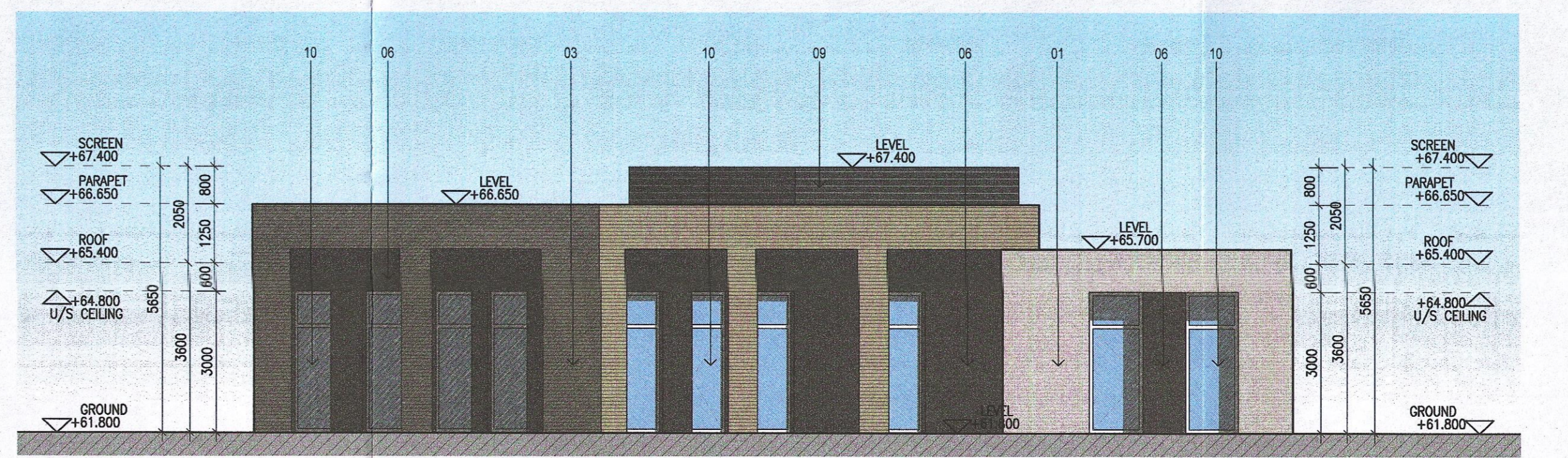
04 Amenity Building - North elevation  
1:100 @ A0



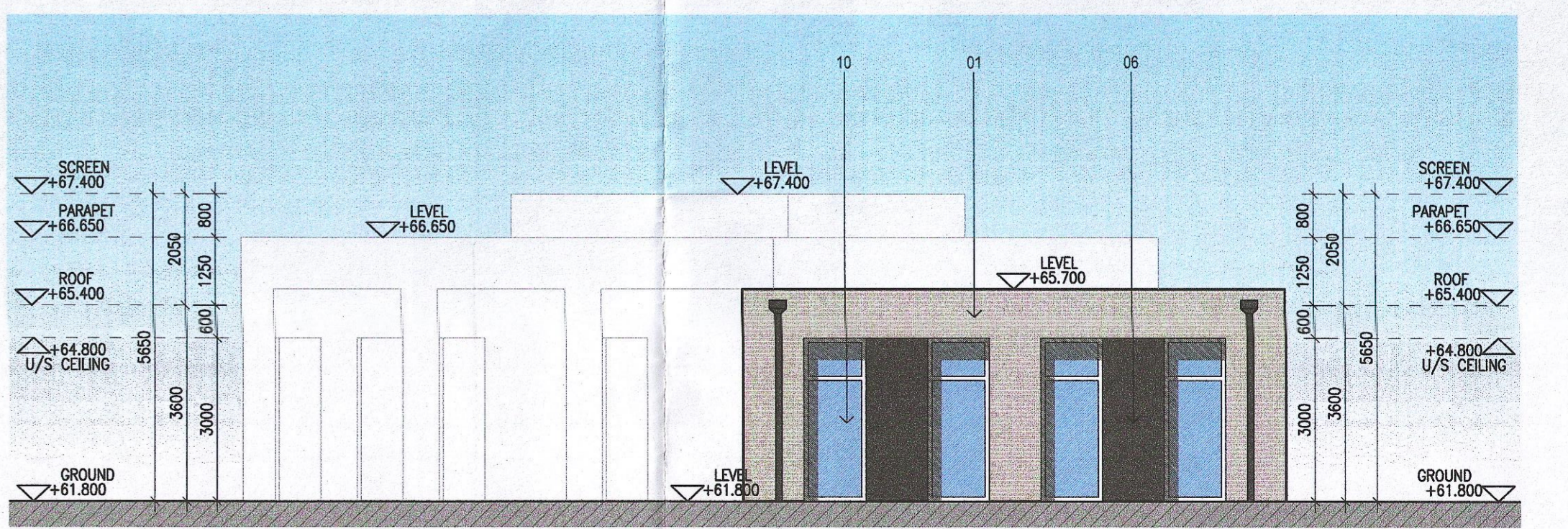
05 Amenity Building - South-West elevation  
1:100 @ A0



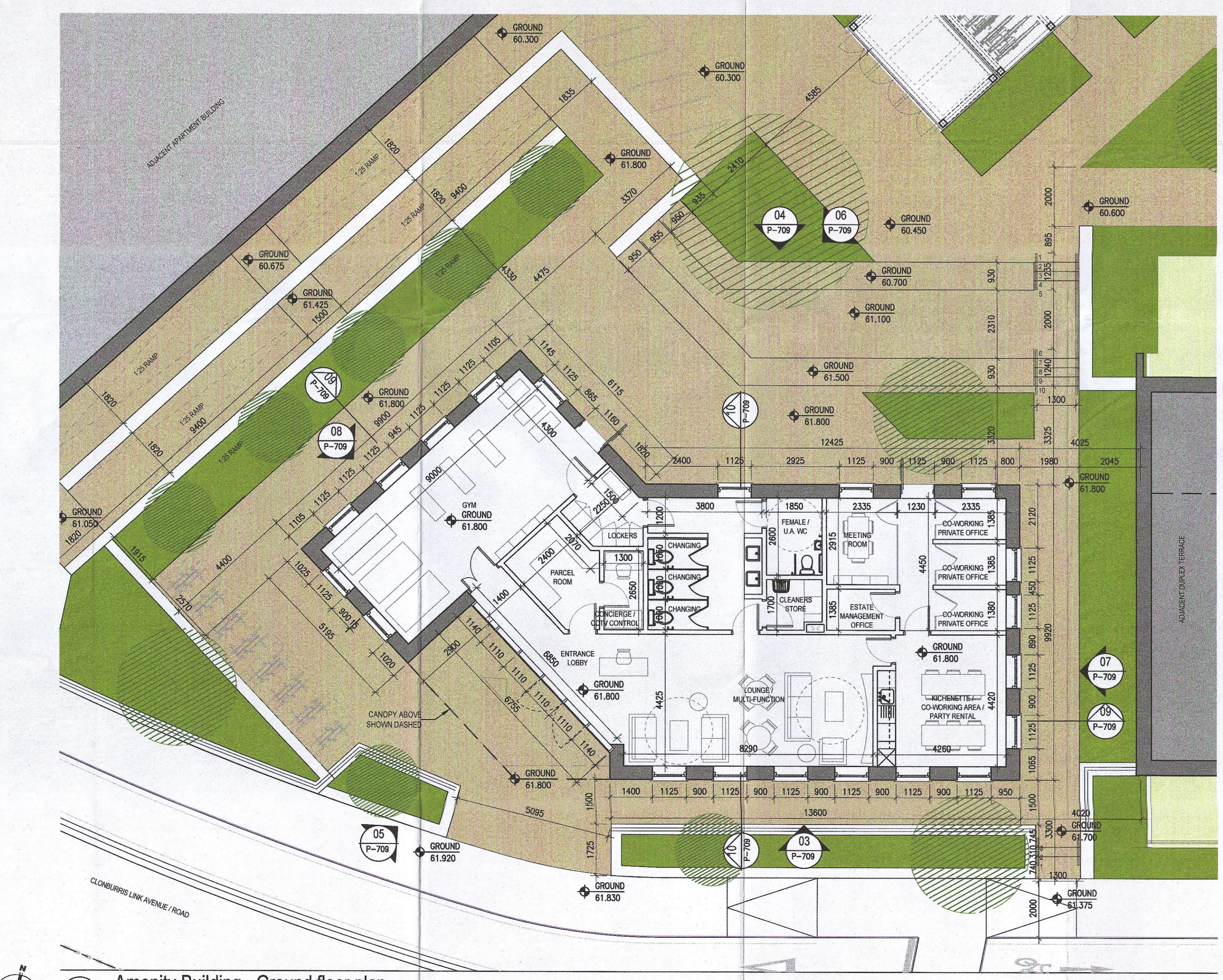
07 Amenity Building - North-West elevation  
1:100 @ A0



06 Amenity building - North-East elevation  
1:100 @ A0



08 Amenity Building - East elevation  
1:100 @ A0



01 Amenity Building - Ground floor plan  
1:100 @ A0

**Notes**

1. Copyright Reserved
2. Work to fixed dimensions only. Do not scale drawings.
3. The contractor is responsible for checking all materials and dimensions on site and shall refer all discrepancies to the Architect.
4. Where appropriate, for details of c/c, structure, or mechanical and electrical details, see Engineers drawings.
5. Proprietors items shall be fixed in accordance with manufacturers instructions.
6. Size of proprietary items shall be expressed in manufacturer's information only.
7. The contractor shall be responsible for the coordination of structure, trades and services.

No.	Date	Revision	Author	Checked
01	21/05/23	Planning Application		

Project: Adamstown Extension - Clonburris SDZ Residential Development

Drawing Title: Tenant Amenity Building - Plans, Section, Elevations

Drawing No: 6268-P-710

Scale: 1:100@A0

Date: Jan'23

**bkdarchitects**  
BURKE-KENNEDY DOYLE