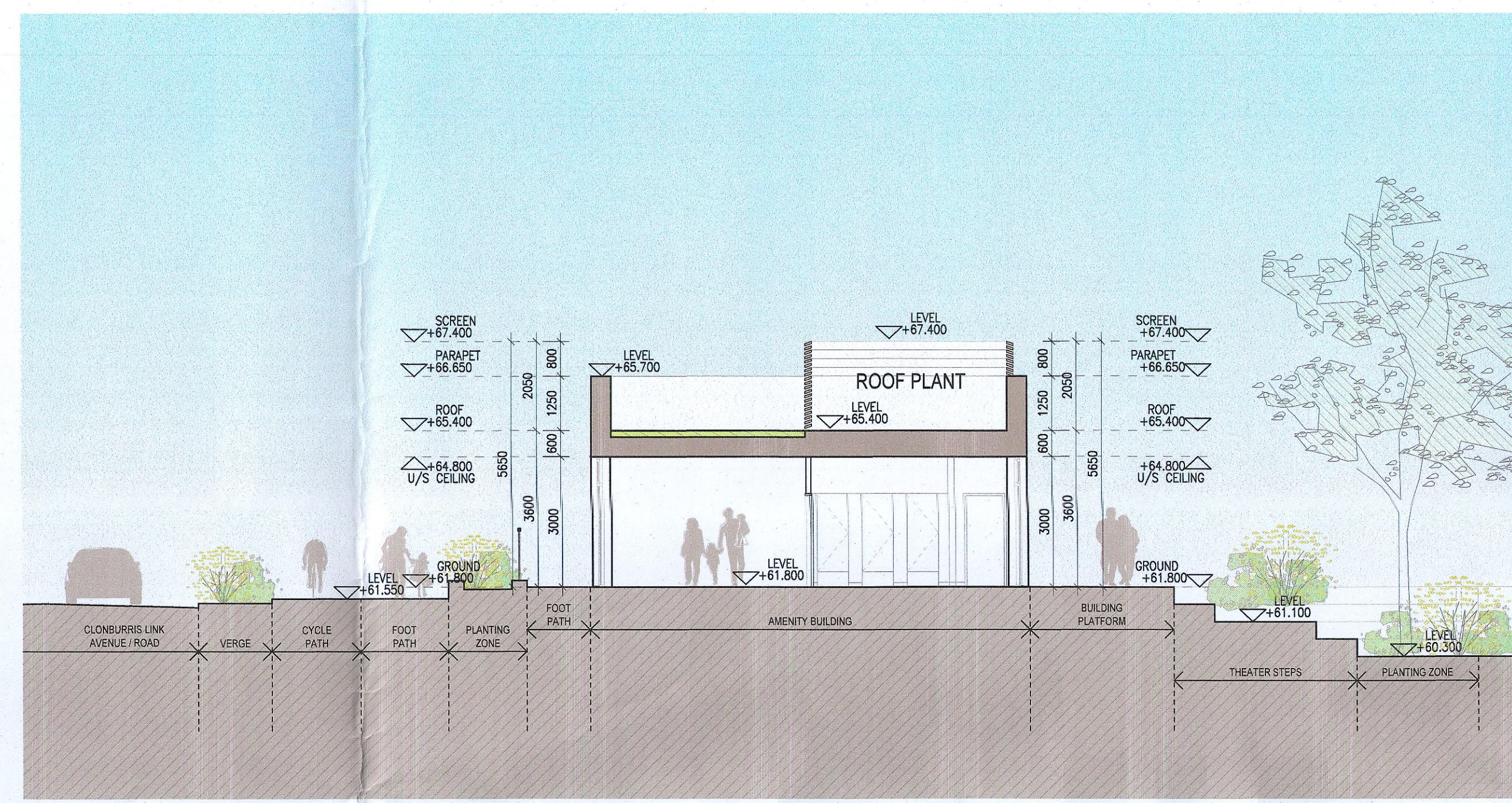
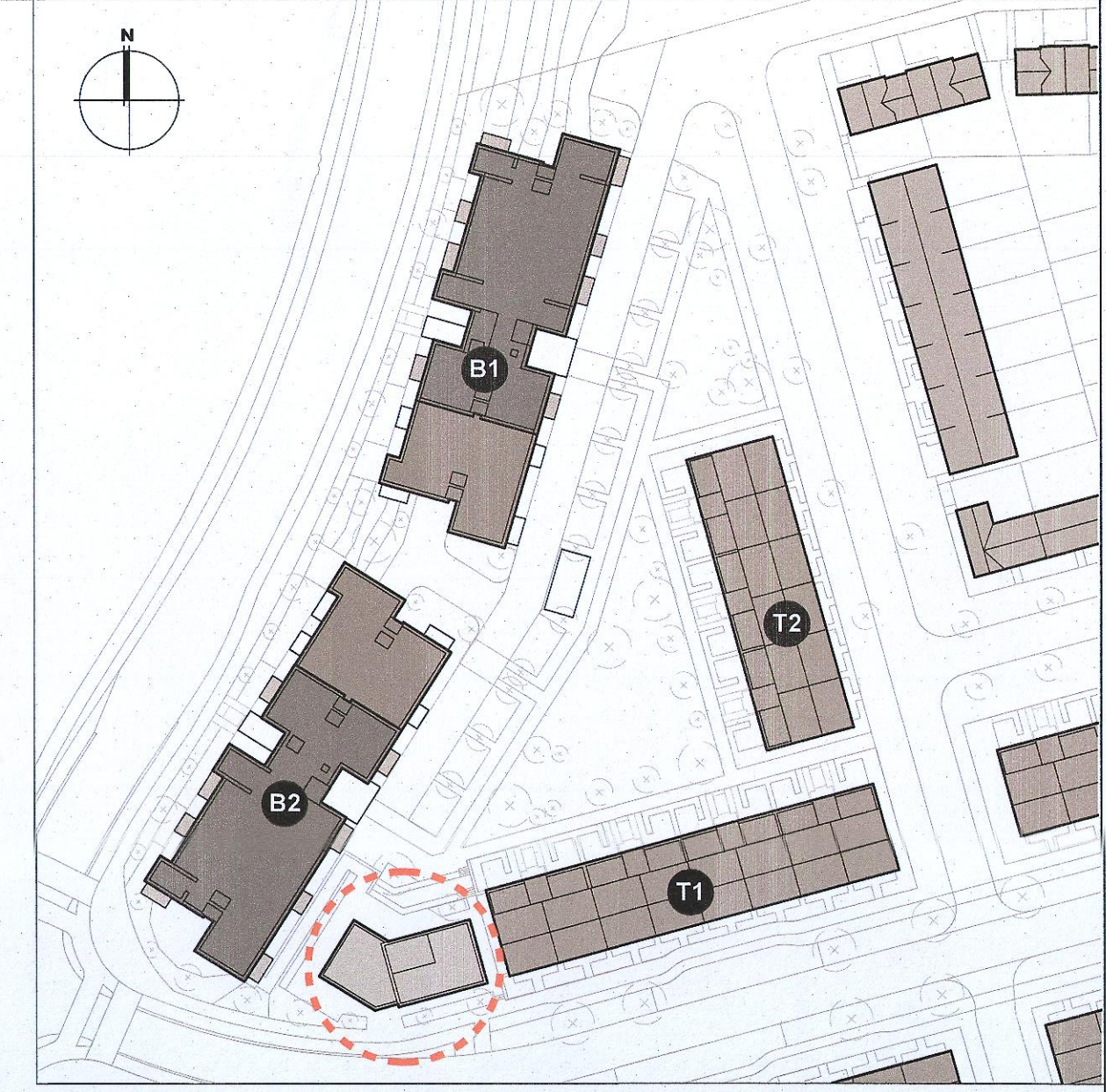


06 Amenity Building - Section B-B
1:100 @ A0



10 Amenity Building - Section A-A
1:100 @ A0



00 Keyplan
Not to scale

MATERIAL CODE LEGEND

- 01 - BUFF BRICK - STANDARD BOND - LIGHT APPROVED TONE
- 02 - BUFF BRICK - FEATURE BOND - LIGHT APPROVED TONE
- 03 - BUFF BRICK - STANDARD BOND - BROWN APPROVED TONE
- 04 - BUFF BRICK - FEATURE BOND - BROWN APPROVED TONE
- 05 - SELF COLOURED RENDER - LIGHT APPROVED TONE
- 06 - SELF COLOURED RENDER - DARK APPROVED TONE
- 07 - CONCRETE ROOF TILES - DARK APPROVED TONE
- 08 - POWDERCOATED METALWORK OR UPVC - DARK APPROVED RAL COLOUR
- 09 - POWDERCOATED METAL SCREENING - DARK APPROVED RAL COLOUR
- 10 - CLEAR GLAZING WITH DARK APPROVED RAL COLOUR FRAMING
- 11 - OPAQUED GLAZING WITH DARK APPROVED RAL COLOUR FRAMING

EXTERNAL FINISHES

WALLS: PAINTED SAND / CEMENT RENDER OR PROPRIETARY PRECOLOURED RENDER FINISH. SELECTED BRICKWORK WHERE INDICATED ON DRAWINGS.

WINDOWS: SELECTED PROPRIETARY DOUBLE / TRIPLE GLAZED WINDOW SYSTEM WITH FRAMES TO APPROVED COLOUR. OPAQUED GLAZING TO BATHROOMS AND EN-SUITES.

BALCONY:

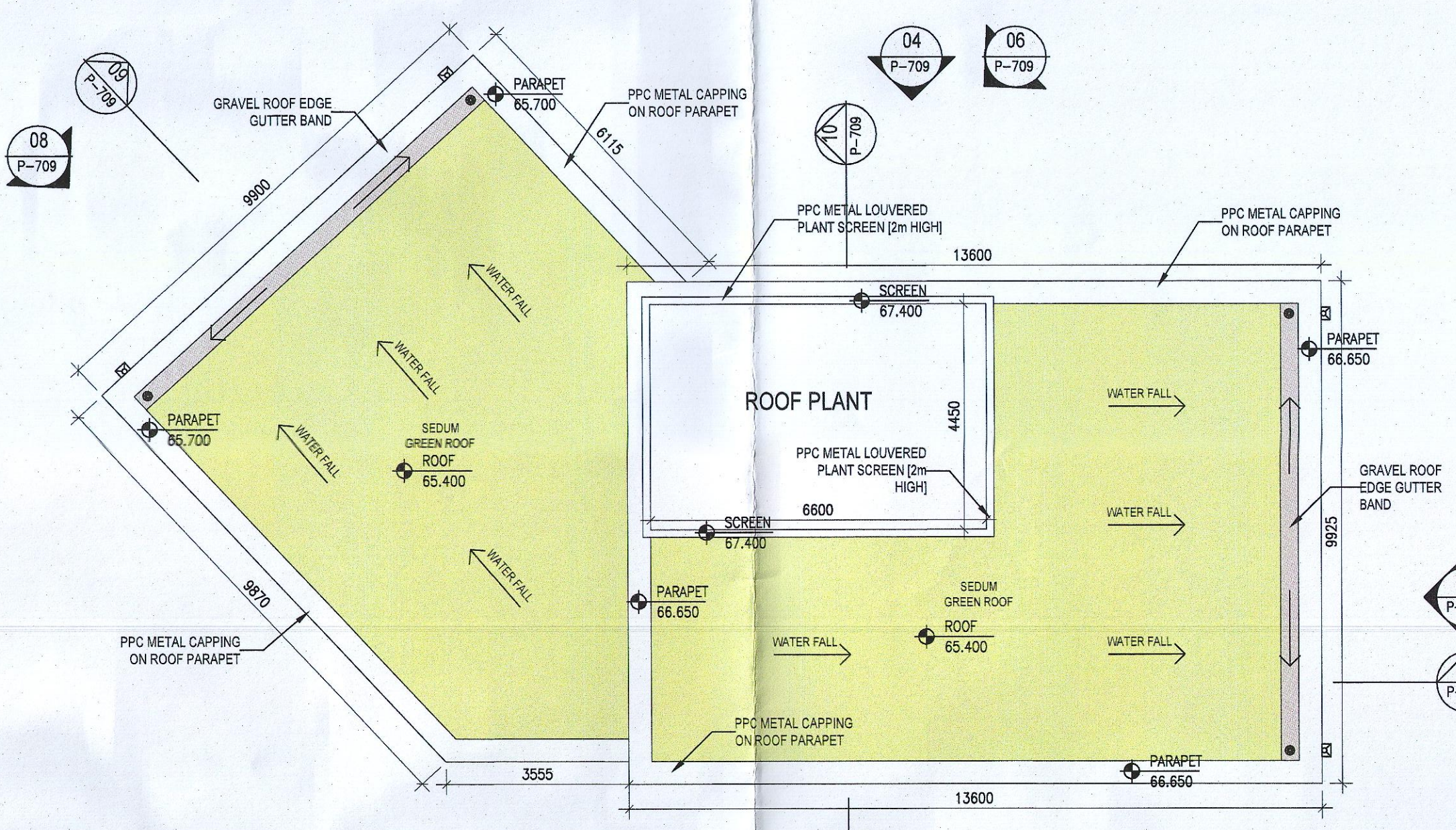
DOORS: SELECTED PROPRIETARY DOORS AND GLAZED SIDE SCREENS TO APPROVED COLOUR.

RAINWATER GOODS: UPVC OR POWDER COATED METAL GUTTERS AND RAINWATER PIPES TO SELECTED COLOUR.

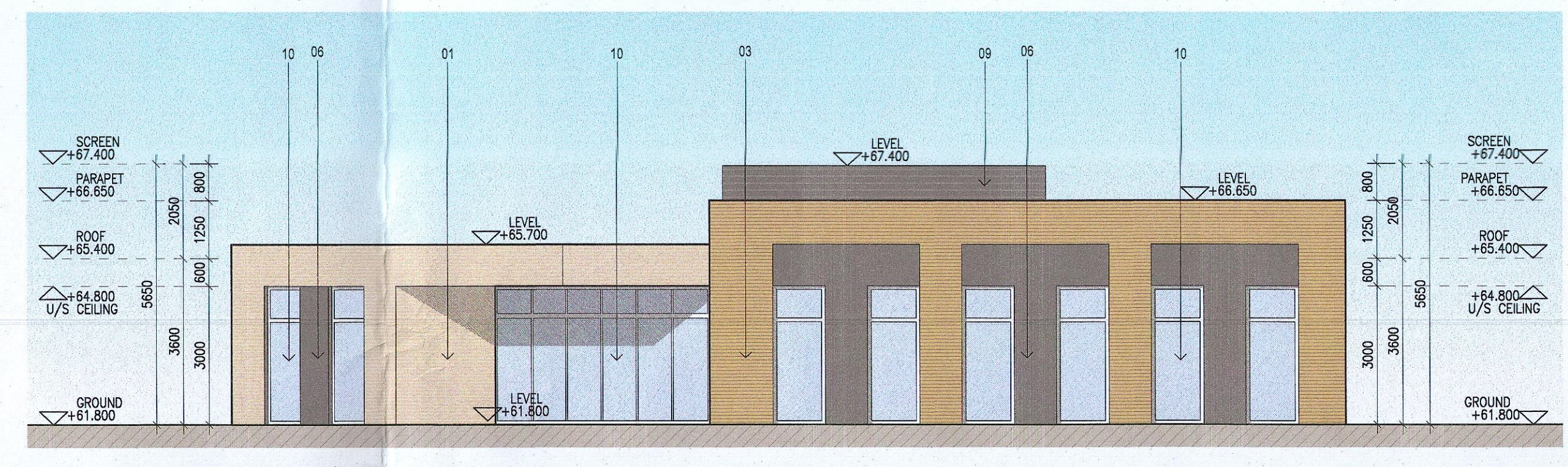
MAIN ROOF: CONCRETE ROOF TILES IN SELECTED COLOUR.

LOW LEVEL PROJECTION: ZINC CANOPY TO ENTRANCE OF UNITS.

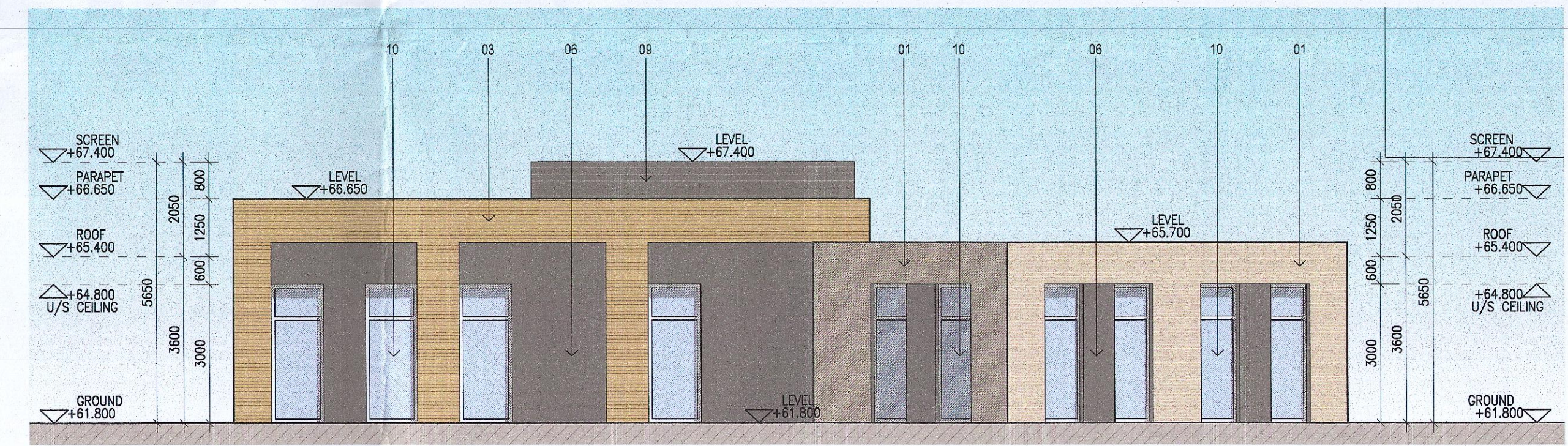
OTHER ITEMS: UPVC OR POWDER COATED METAL FASCIAS, SOFFITS AND BARGE BOARDS PAINTED. MILDSTEEL RAILINGS AND BALUSTRADES.



02 Amenity Building - Roof plan
1:100 @ A0



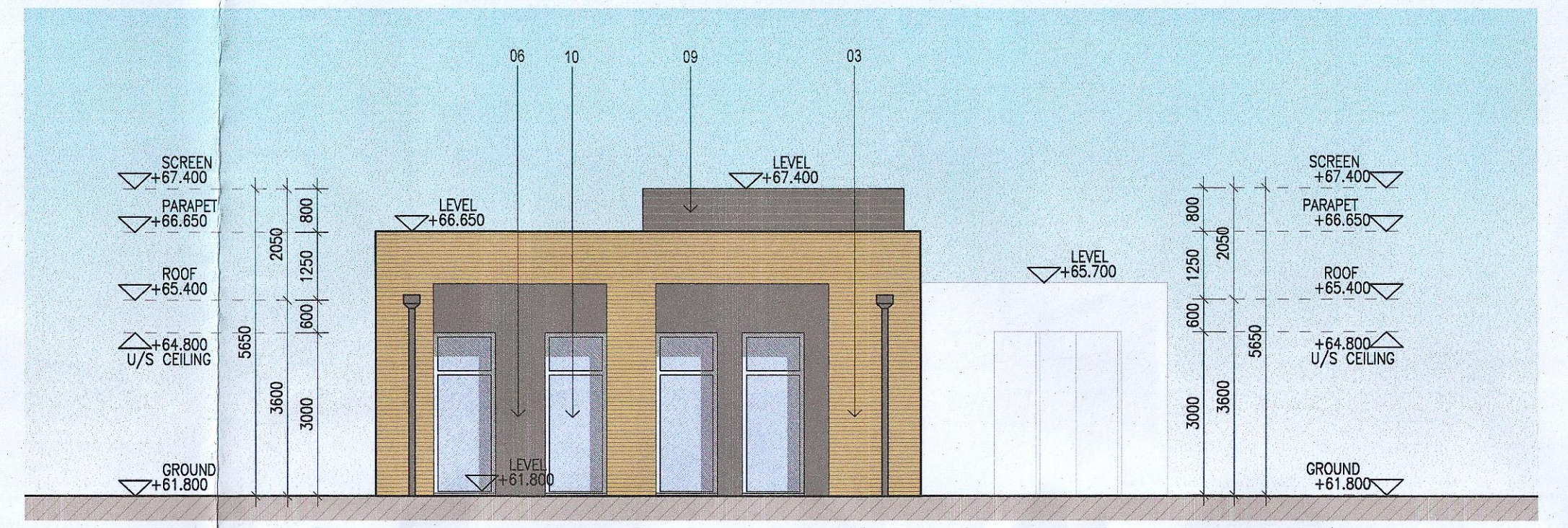
03 Amenity building - South elevation
1:100 @ A0



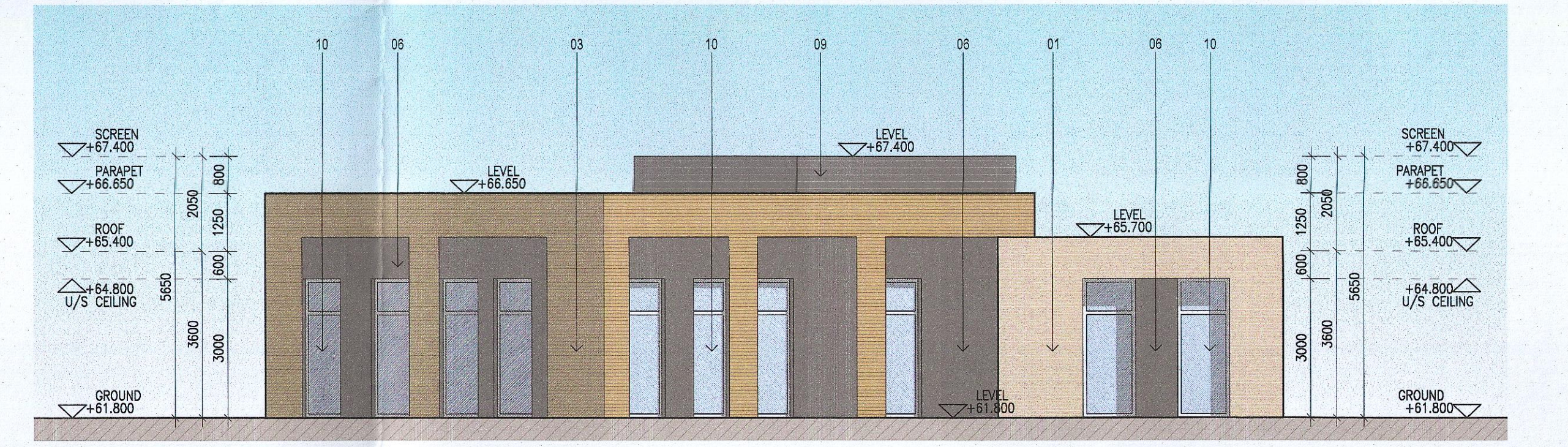
04 Amenity Building - North elevation
1:100 @ A0



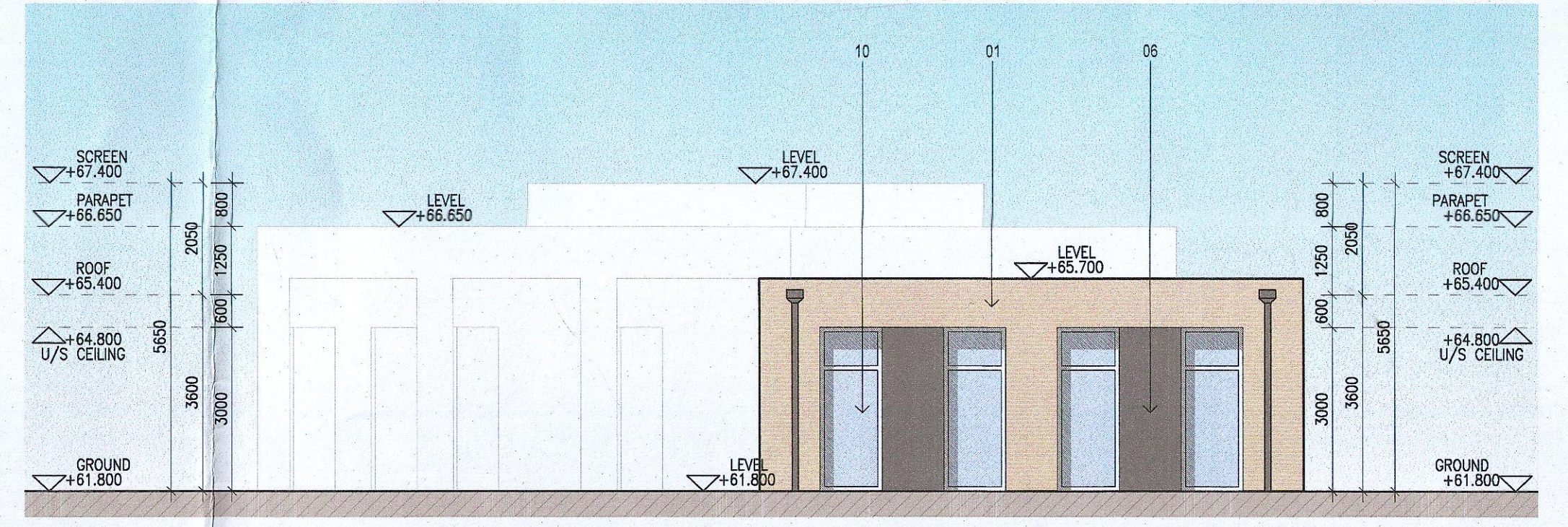
05 Amenity Building - South-West elevation
1:100 @ A0



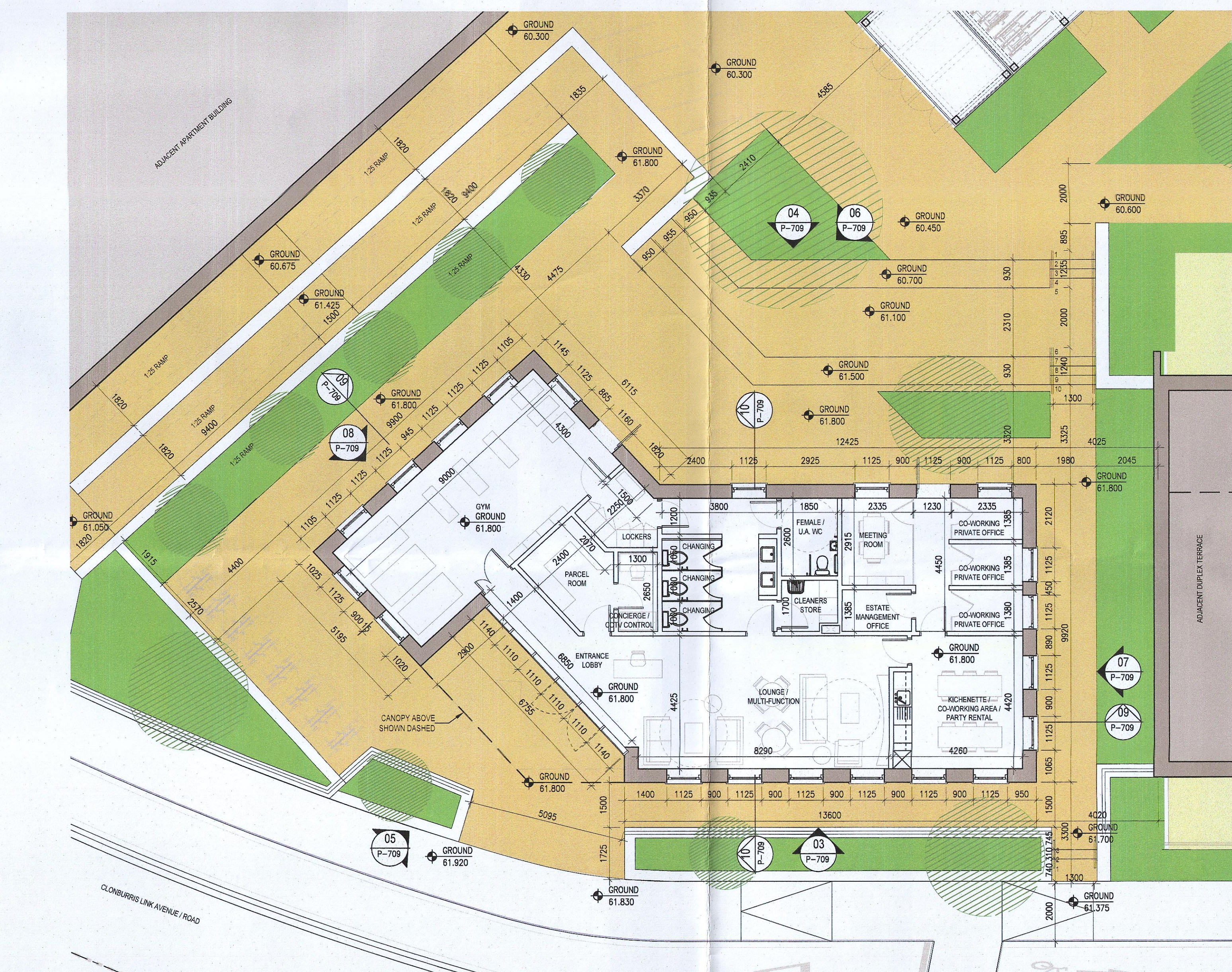
07 Amenity Building - North-West elevation
1:100 @ A0



06 Amenity building - North-East elevation
1:100 @ A0



08 Amenity Building - East elevation
1:100 @ A0



01 Amenity Building - Ground floor plan
1:100 @ A0

<p>1. Copyright Reserved</p> <p>2. Work to be signed and stamped only. Do not scale drawing.</p> <p>3. The contractor is responsible for checking all levels and dimensions on site and shall refer all discrepancies to the Architect.</p> <p>4. Where appropriate, fix details of c.a. structure, or mechanical and electrical details, see Engineers drawings.</p> <p>5. Proprietary items shall be fixed in strict accordance with manufacturer's instructions.</p> <p>6. Sites of proprietary items shall be checked with manufacturer.</p> <p>7. The contractor shall be responsible for the coordination of structure, finishes and services.</p>	<p>Issue Status</p> <p>Progress</p> <p>Planning Application</p> <p>Fire Cert</p> <p>Disability Cert</p> <p>Transfer</p> <p>Construction</p> <p>As-Built</p> <p>Information Only</p>	<p>No. Date Revision</p> <p>01 27/01/23 Planning Application</p>	<p>Issue</p> <p>VB</p>	<p>Project</p> <p>Adamstown Extension - Clonburris SDZ Residential Development</p> <p>Drawing Title</p> <p>Tenant Amenity Building - Plans, Section, Elevations</p> <p>Drawing No.</p> <p>6258-P-710</p> <p>Scale</p> <p>1:100@A0</p> <p>Rev</p> <p>01</p> <p>Drawn</p> <p>VB</p> <p>Date</p> <p>Jan 23</p>	<p>1:7 HANDOUT TERRACE, OVERLAP D, 08&A AND 0-1001-010000 11-0001-010000</p> <p>www.bkd.ie</p> <p>bkdarchitects</p> <p>BURKE-KENNEDY-DOYLE</p>
--	---	--	------------------------	---	---