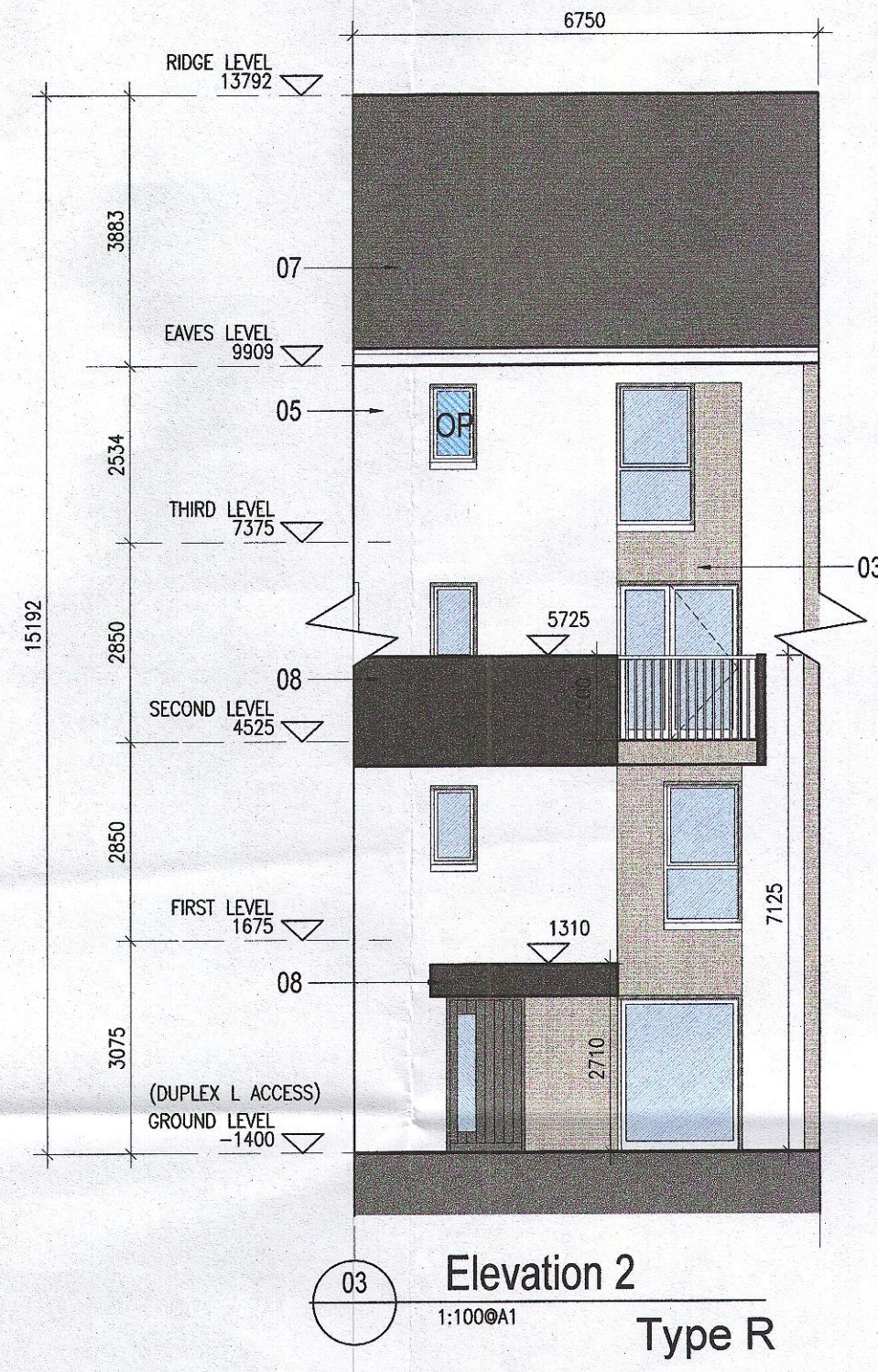
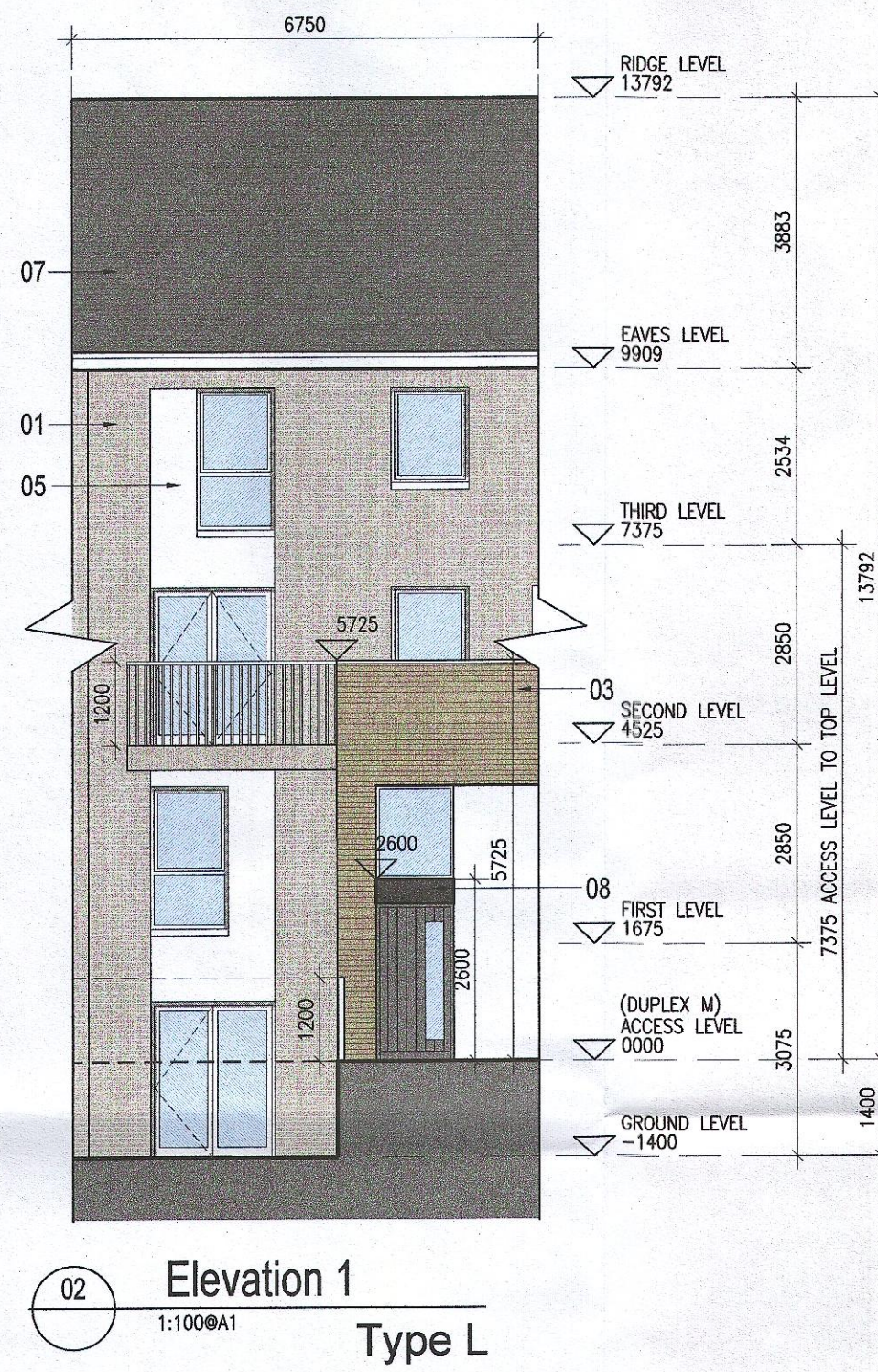
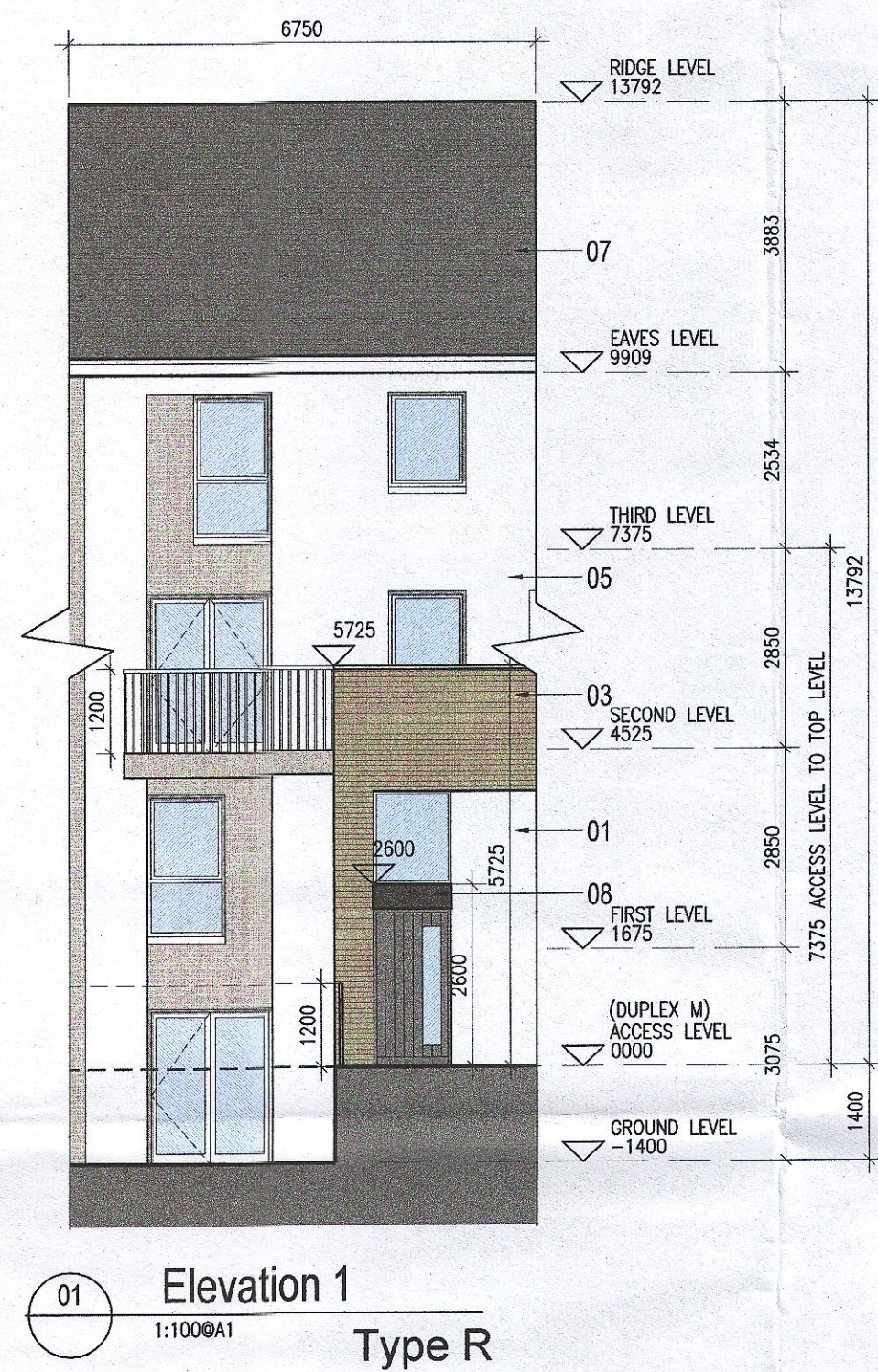
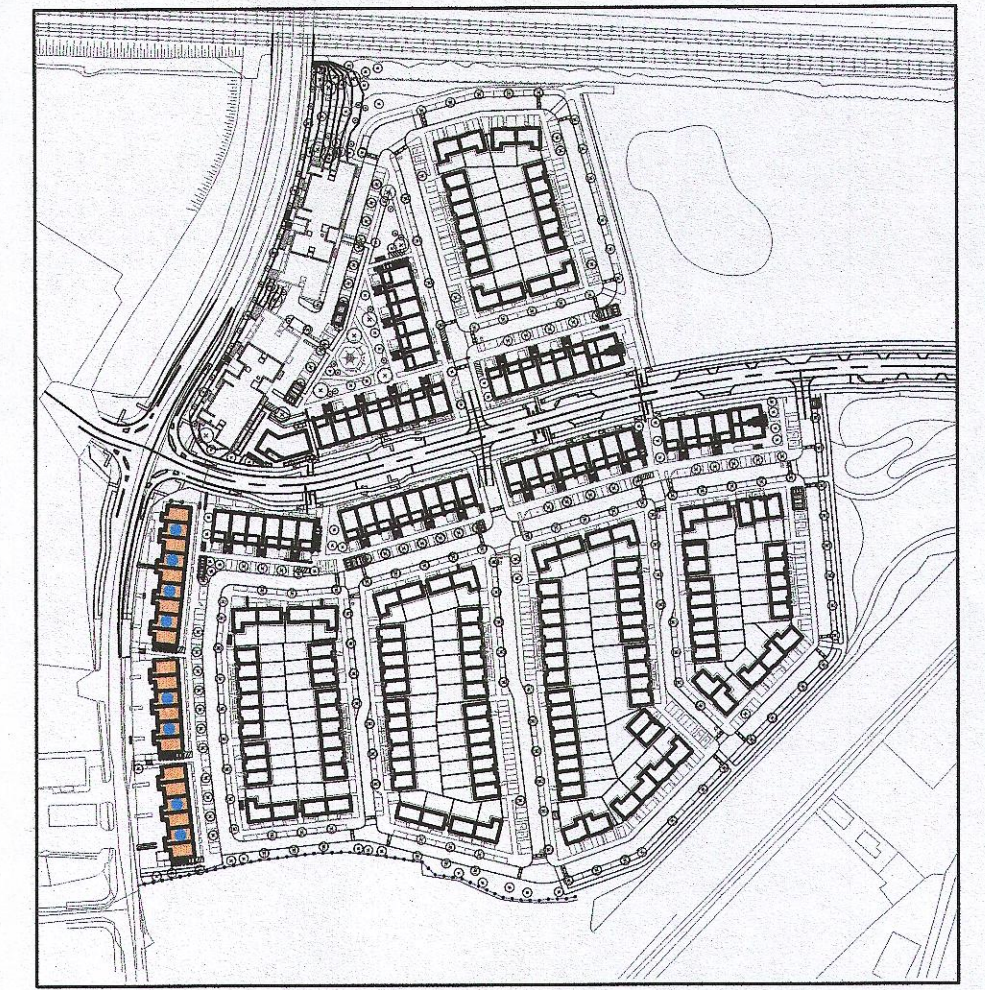


TYPE L1M1 - DUPLEX



REFER TO STREET ELEVATIONS FOR LOCATIONS OF EACH ELEVATION VARIATION



Indicates unit locations
KEY PLAN [NTS]

REFER TO LANDSCAPE ARCHITECT'S DRAWINGS FOR ALL LANDSCAPING DETAILS

MATERIAL CODE LEGEND	
01	BUFF BRICK - STANDARD BOND - LIGHT APPROVED TONE
02	BUFF BRICK - FEATURE BOND - LIGHT APPROVED TONE
03	BUFF BRICK - STANDARD BOND - BROWN APPROVED TONE
04	BUFF BRICK - FEATURE BOND - BROWN APPROVED TONE
05	SELF COLOURED RENDER - LIGHT APPROVED TONE
06	SELF COLOURED RENDER - DARK APPROVED TONE
07	CONCRETE ROOF TILES - DARK APPROVED TONE
08	POWDERCOATED METALWORK OR uPVC - DARK APPROVED RAL COLOUR
09	POWDERCOATED METAL SCREENING - DARK APPROVED RAL COLOUR
10	CLEAR GLAZING WITH DARK APPROVED RAL COLOUR FRAMING
11	OPACIFIED GLAZING WITH DARK APPROVED RAL COLOUR FRAMING

EXTERNAL FINISHES	
WALLS:	PAINTED SAND / CEMENT RENDER OR PROPRIETARY PRECOLOURED RENDER FINISH SELECTED BRICKWORK WHERE INDICATED ON DRAWINGS
WINDOWS:	SELECTED PROPRIETARY DOUBLE / TRIPLE GLAZED WINDOW SYSTEM WITH FRAMES TO APPROVED COLOUR OBSCURED GLAZING TO BATHROOMS AND EN-SUITES.
DOORS:	SELECTED PROPRIETARY DOORS AND GLAZED SIDE SCREENS TO APPROVED COLOUR.
RAINWATER GOODS:	uPVC OR POWDER COATED METAL GUTTERS AND RAINWATER PIPES TO SELECTED COLOUR.
MAIN ROOF:	CONCRETE ROOF TILES IN SELECTED COLOUR.
LOW LEVEL PROJECTION:	ZINC CANOPY TO ENTRANCE OF UNITS
OTHER ITEMS:	uPVC OR POWDER COATED METAL FASCIAS, SOFFITS AND BARGE BOARDS PAINTED MILDSTEEL RAILINGS AND BALUSTRADES

Notes	Issue Status	No.	Date	Revision	Initials
1. Copyright Reserved	Planning Application	01	27/01/23	Planning Application	AM
2. Work to figured dimensions only. Do not scale drawing.	Fire Cert				
3. The contractor is responsible for checking all levels and dimensions on site and shall refer all discrepancies to the Architect	Disability Cert				
4. Where appropriate, for details of c/c, structure, or mechanical and electrical details, see Engineers drawings	Tender				
5. Proprietary items shall be fixed in strict accordance with manufacturers instructions.	Construction				
6. Sizes of proprietary items shall be checked with manufacturer.	As Built				
7. The contractor shall be responsible for the coordination of structure, finishes and services.	Information Only				

Project: **Adamston Extension - Clonburris SDZ Residential Development**

Drawing Title: Duplex Type L1M1 - (mid) Non Handed - Elevations

Drawing No: 6268-P-207

Scale: 1:100 @ A1 | Rev: 01 | Drawn: SHJN/AM | Date: JAN/2023

6-7 HARPCOURT TERRACE, DUBLIN 2, IRELAND
T: +353-1-618 2400 | F: +353-1-618 7386
www.bkd.ie

bkd architects
BURKE-KENNEDY DOYLE