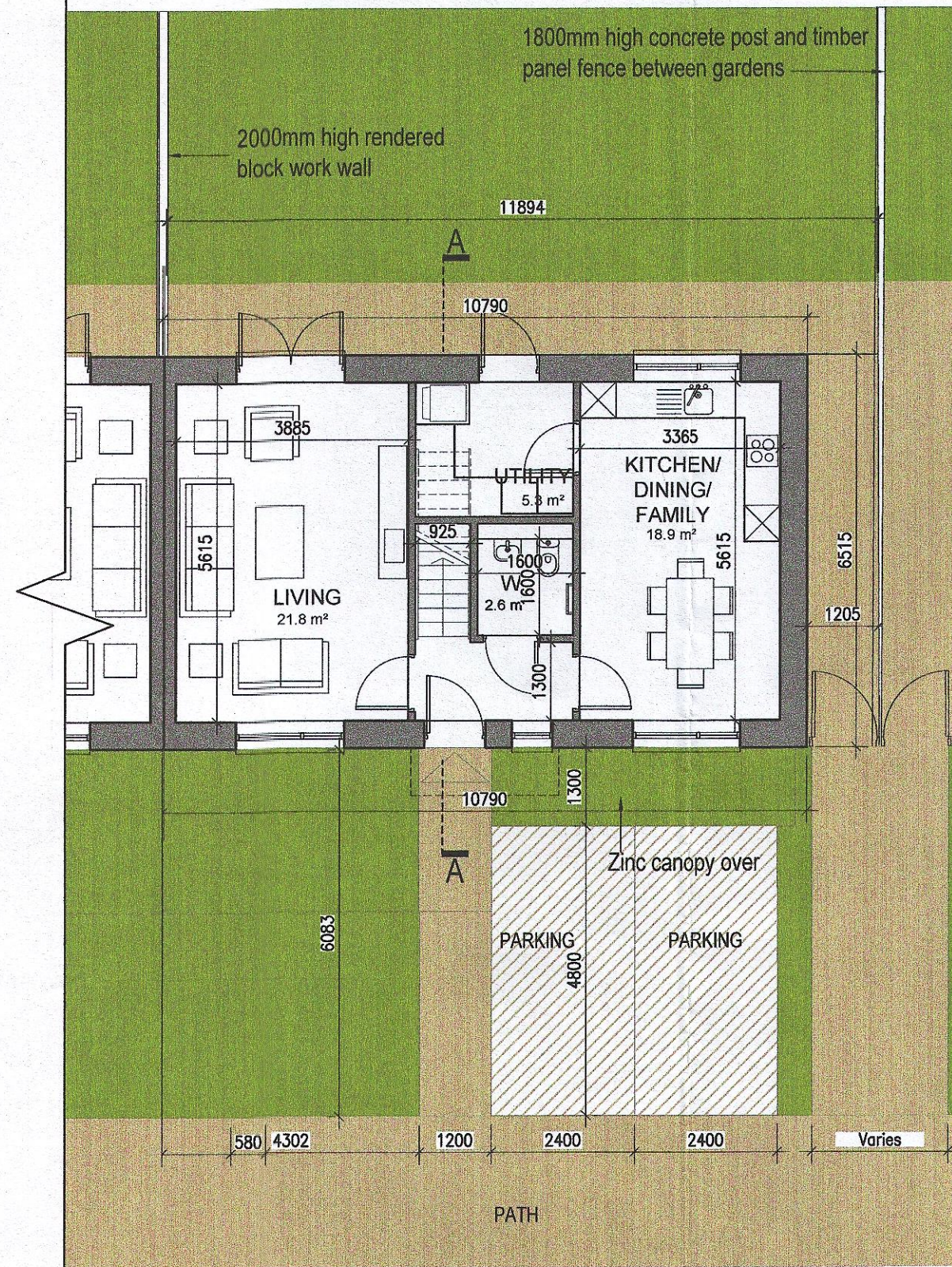
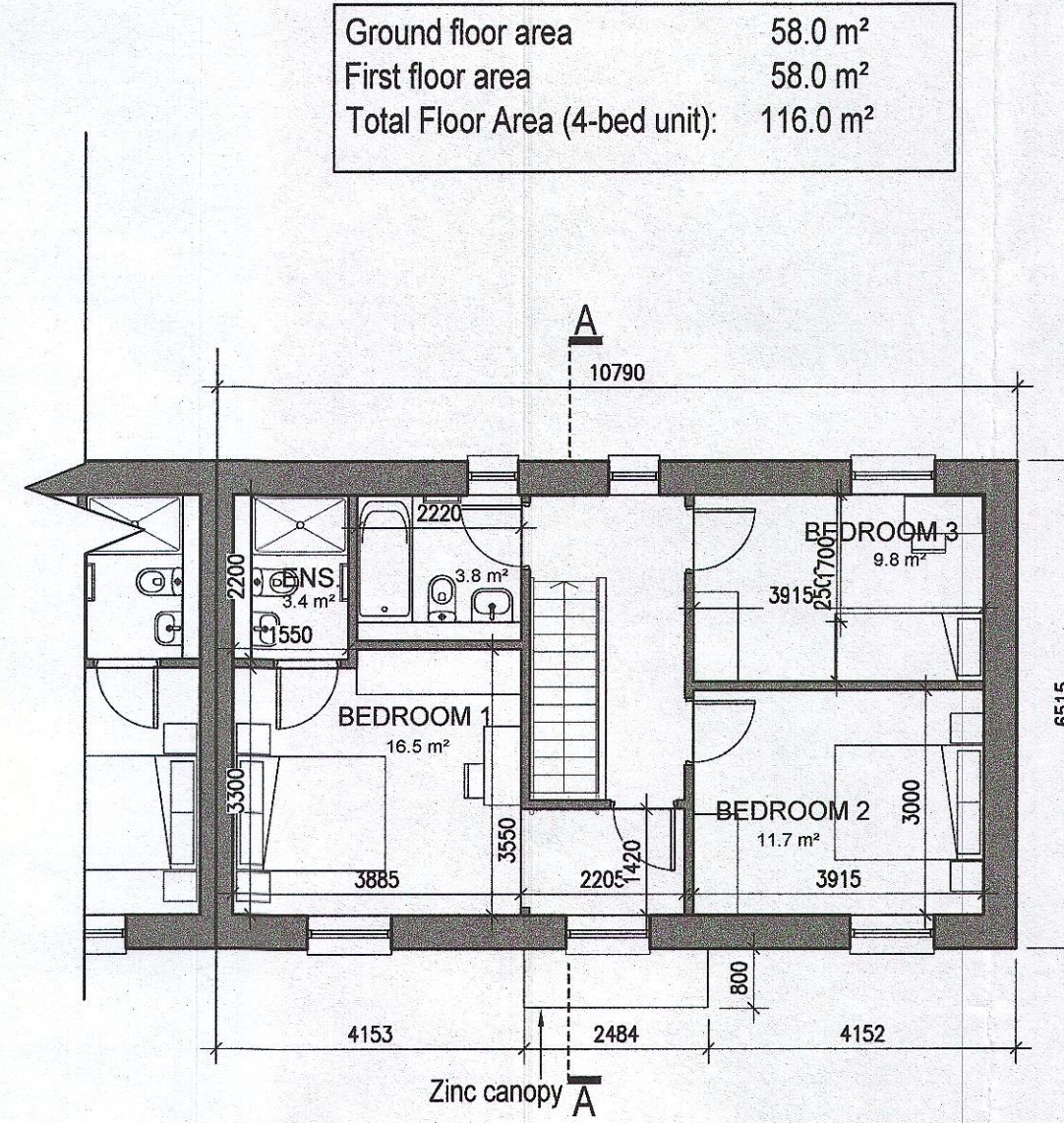


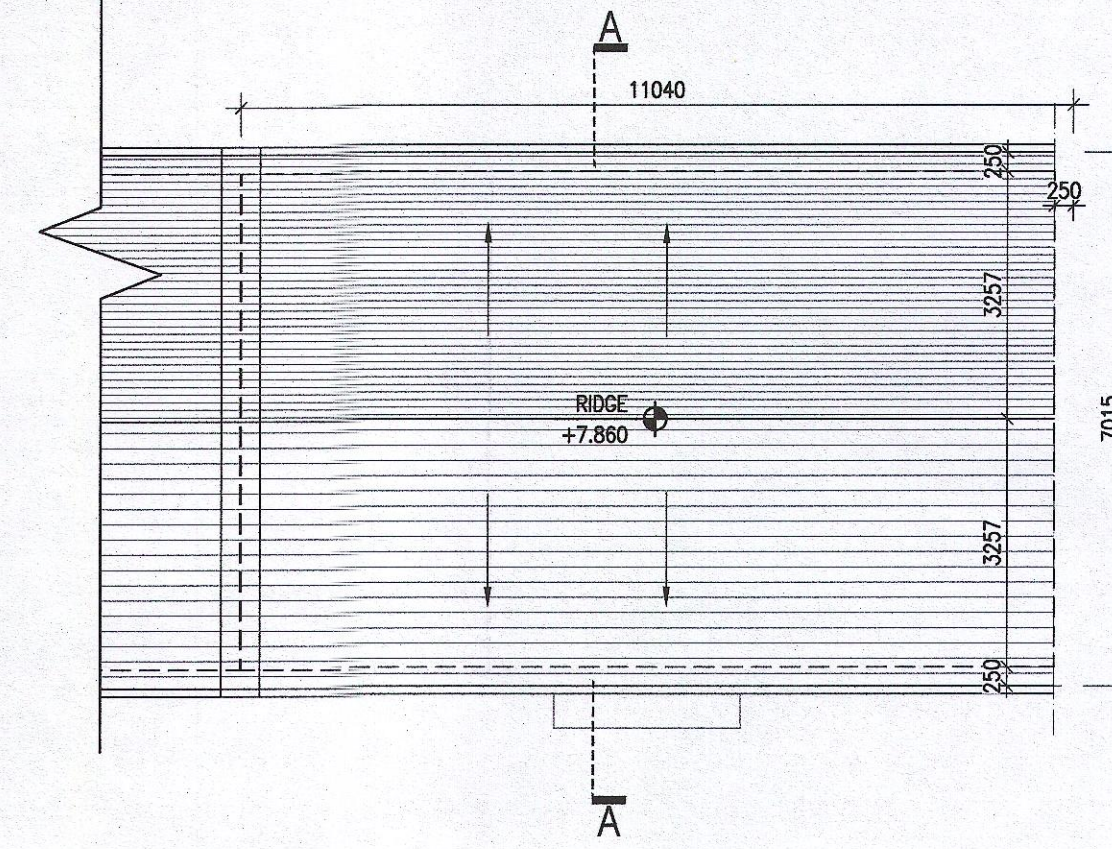
HOUSE TYPE F1  
HANDED



01 Ground Floor Plan  
123



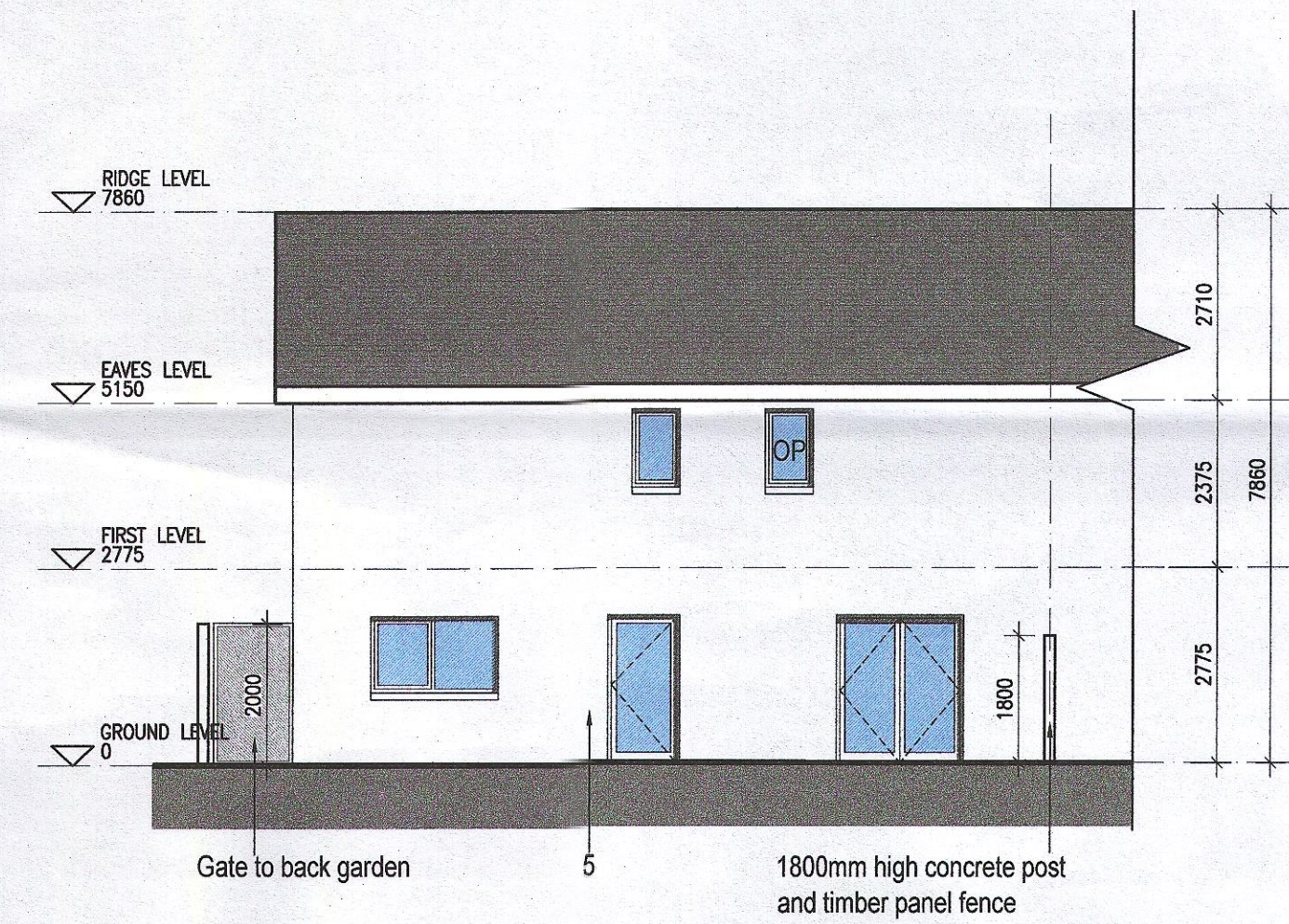
02 First Floor Plan  
123



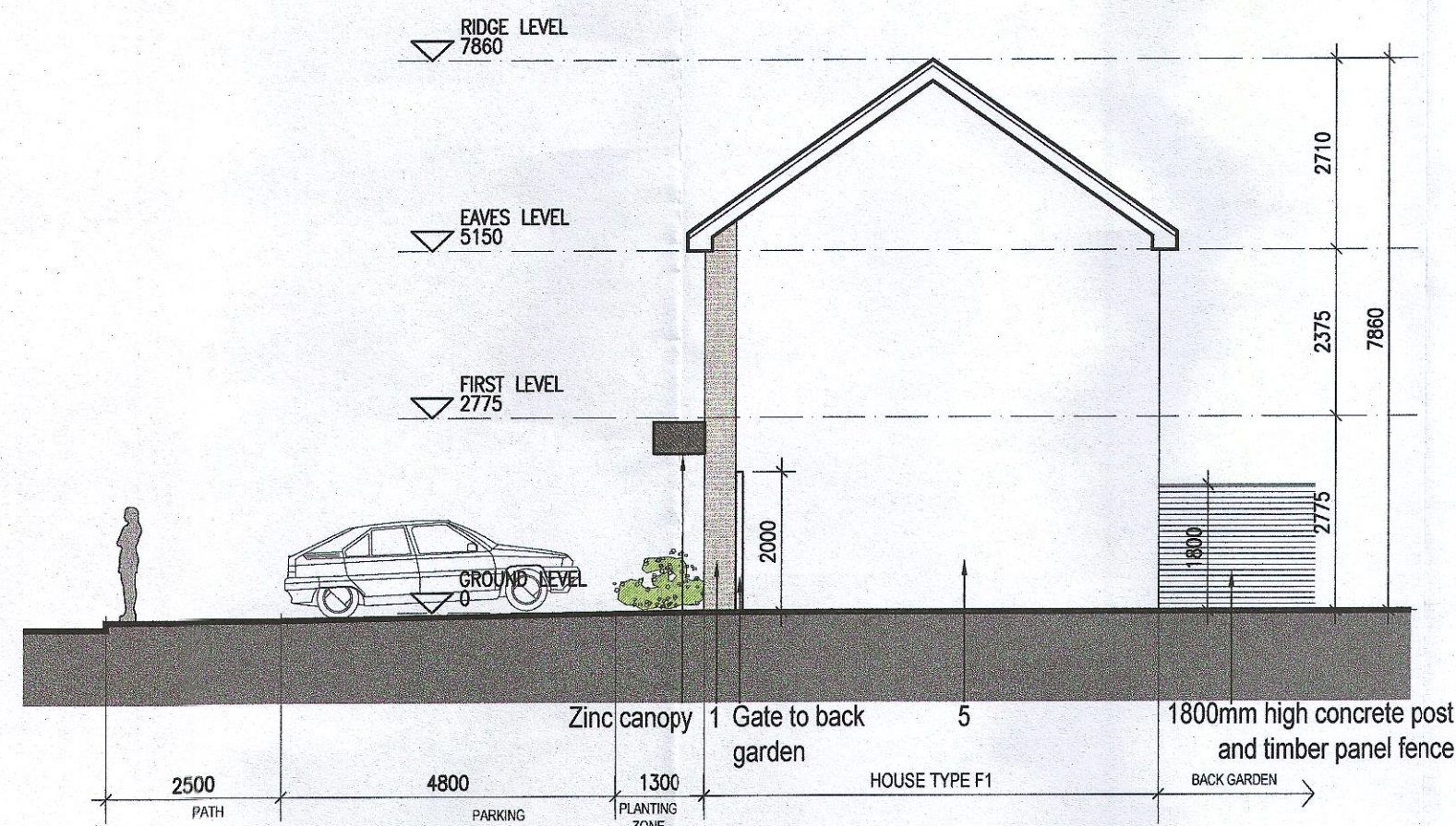
03 Roof Plan  
1:100@A1  
123



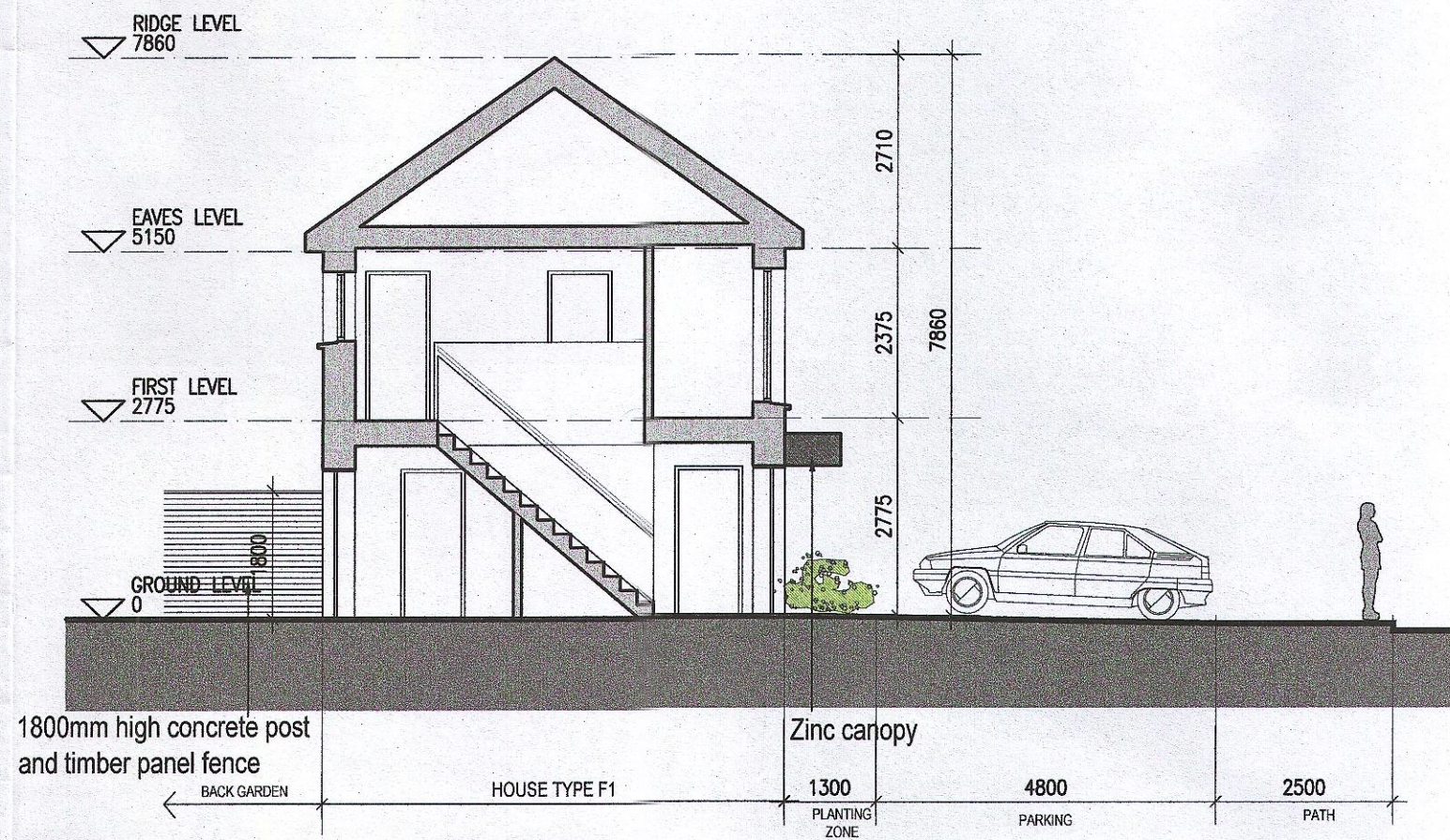
04 Front Elevation  
123



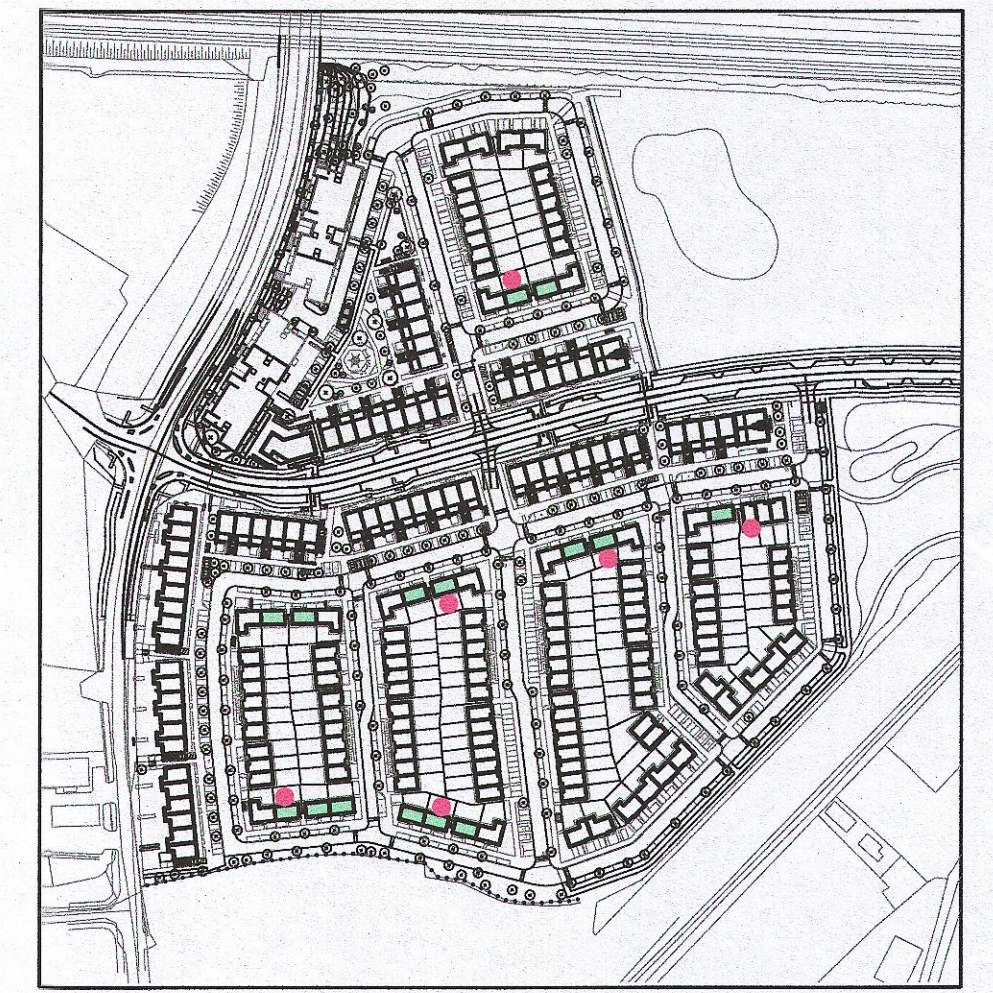
05 Rear Elevation  
123



06 Side Elevation  
123



07 Section A-A  
123



Indicates unit locations  
KEY PLAN [NTS]

HOUSE TYPES	unit type	No. of beds	No. of storeys	No. of units
Type A	- 4 bed	3 storeys	11	
Type B	- 4 bed	3 storeys	15	
Type C	- 4 bed	2 storeys	11	
Type D	- 3 bed	2 storeys	46	
Type E	- 3 bed	2 storeys	41	
Type F	- 3 bed	2 storeys	15	

139

EXTERNAL FINISHES	
WALLS:	PAINTED SAND / CEMENT RENDER OR PROPRIETARY PRECOLOURED RENDER FINISH SELECTED BRICKWORK WHERE INDICATED ON DRAWINGS
WINDOWS:	SELECTED PROPRIETARY DOUBLE / TRIPLE GLAZED WINDOW SYSTEM WITH FRAMES TO APPROVED COLOUR OBSCURED GLAZING TO BATHROOMS AND EN-SUITES.
DOORS:	SELECTED PROPRIETARY DOORS AND GLAZED SIDE SCREENS TO APPROVED COLOUR.
RAINWATER GOODS:	UPVC OR POWDER COATED METAL GUTTERS AND RAINWATER PIPES TO SELECTED COLOUR.
MAIN ROOF:	CONCRETE ROOF TILES IN SELECTED COLOUR.
LOW LEVEL PROJECTION:	ZINC CANOPY TO ENTRANCE OF UNITS
OTHER ITEMS:	UPVC OR POWDER COATED METAL FASCIAS, SOFFITS AND BARGE BOARDS PAINTED MILDSTEEL RAILINGS AND BALUSTRADES

MATERIAL CODE LEGEND	
01	BUFF BRICK - STANDARD BOND - LIGHT APPROVED TONE
02	BUFF BRICK - FEATURE BOND - LIGHT APPROVED TONE
03	BUFF BRICK - STANDARD BOND - BROWN APPROVED TONE
04	BUFF BRICK - FEATURE BOND - BROWN APPROVED TONE
05	SELF COLOURED RENDER - LIGHT APPROVED TONE
06	SELF COLOURED RENDER - DARK APPROVED TONE
07	CONCRETE ROOF TILES - DARK APPROVED TONE
08	POWDERCOATED METALWORK OR UPVC - DARK APPROVED RAL COLOUR
09	POWDERCOATED METAL SCREENING - DARK APPROVED RAL COLOUR
10	CLEAR GLAZING WITH DARK APPROVED RAL COLOUR FRAMING
11	OPACIFIED GLAZING WITH DARK APPROVED RAL COLOUR FRAMING

REFER TO STREET ELEVATIONS FOR LOCATION OF ELEVATION TYPES

REFER TO LANDSCAPE ARCHITECT'S DRAWINGS FOR ALL LANDSCAPING DETAILS INCLUDING BOUNDARY TREATMENTS

- Notes
- Copyright Reserved
  - Work to figured dimensions only. Do not scale drawing
  - The contractor is responsible for checking all levels and dimensions on site and shall refer all discrepancies to the Architect
  - Where appropriate, for details of r.c. structure, or mechanical and electrical details, see Engineers drawings
  - Proprietary items shall be fixed in strict accordance with manufacturers instructions.
  - Sizes of proprietary items shall be checked with manufacturer.
  - The contractor shall be responsible for the coordination of structure, finishes and services.

Issue Status	No.	Date	Revision	Initials
Progress				
Planning Application				
Fire Cert				
Disability Cert				
Tender				
Construction				
As Built				
Information Only				

No.	Date	Revision	Initials
01	27/01/23	Planning Application	IFJ

Project	Adamstown Extension - Clonburris SDZ Residential Development	6-7 HARPCOURT TERRACE, DUBLIN 9, IRELAND T: +353 1 618 2600 F: +353 1 618 7385 e: architecture@bkd.ie
Drawing Title	House Type F1_End_Handed_Plans, Elevations and Section	
Drawing No	6268-P-123	
Scale	1:100 @ A1	Rev 01
Drawn	IFJ	Date Jan '23

**bkd**architects  
BURKE-KENNEDY DOYLE