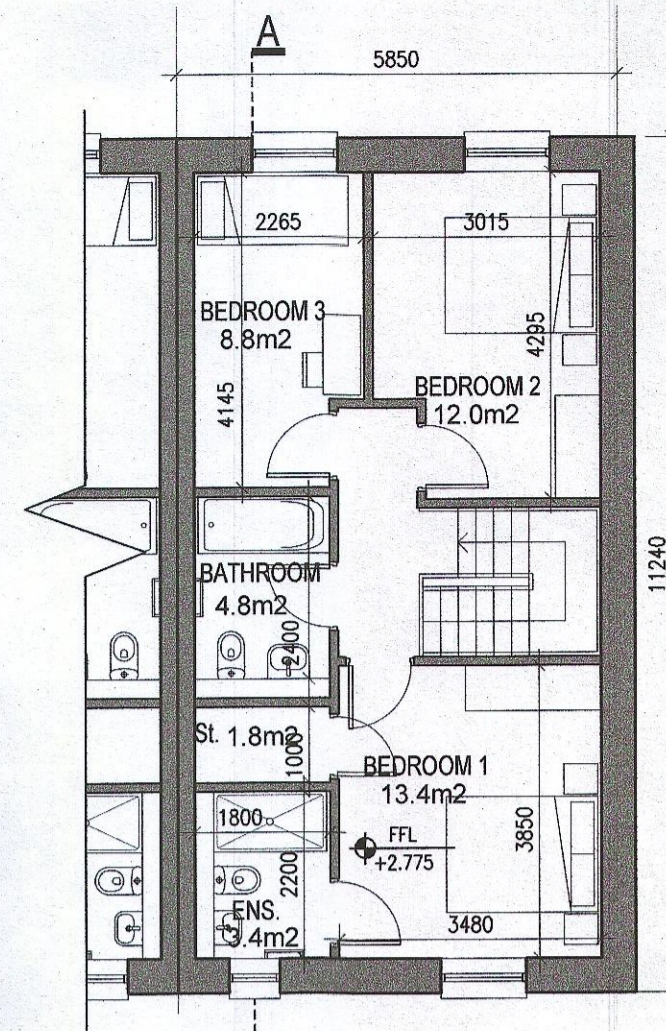
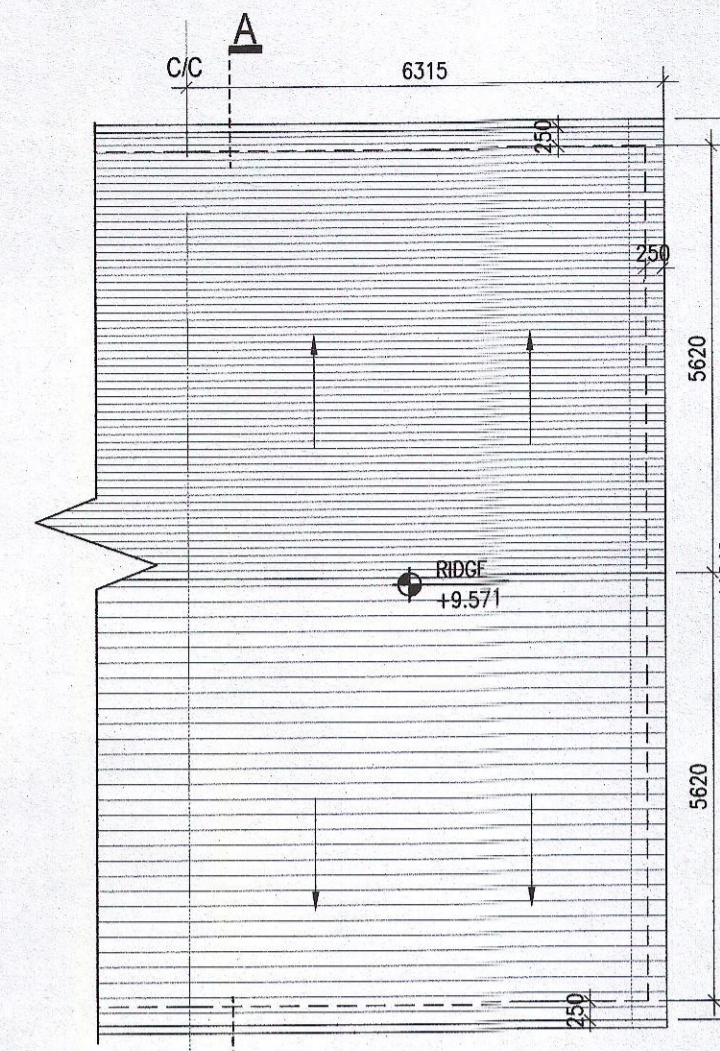


01 Ground Floor Plan

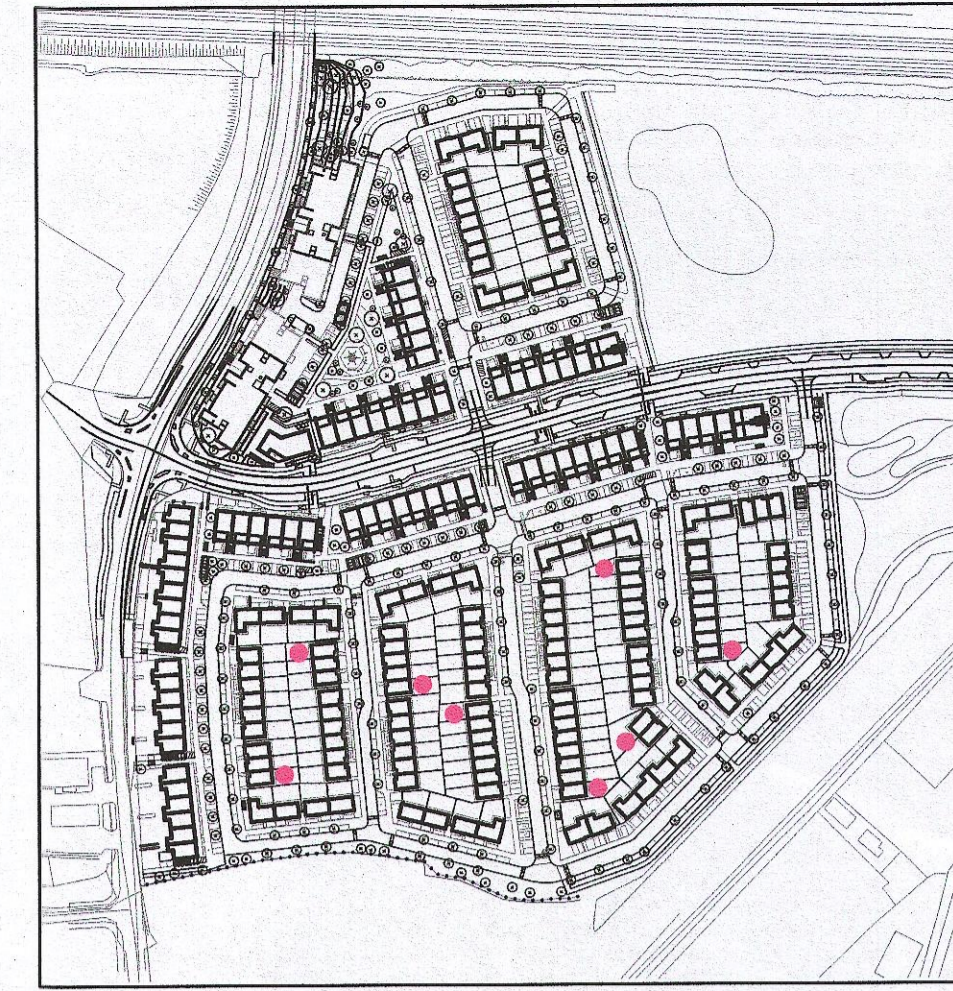


02 First Floor Plan



03 Roof Plan

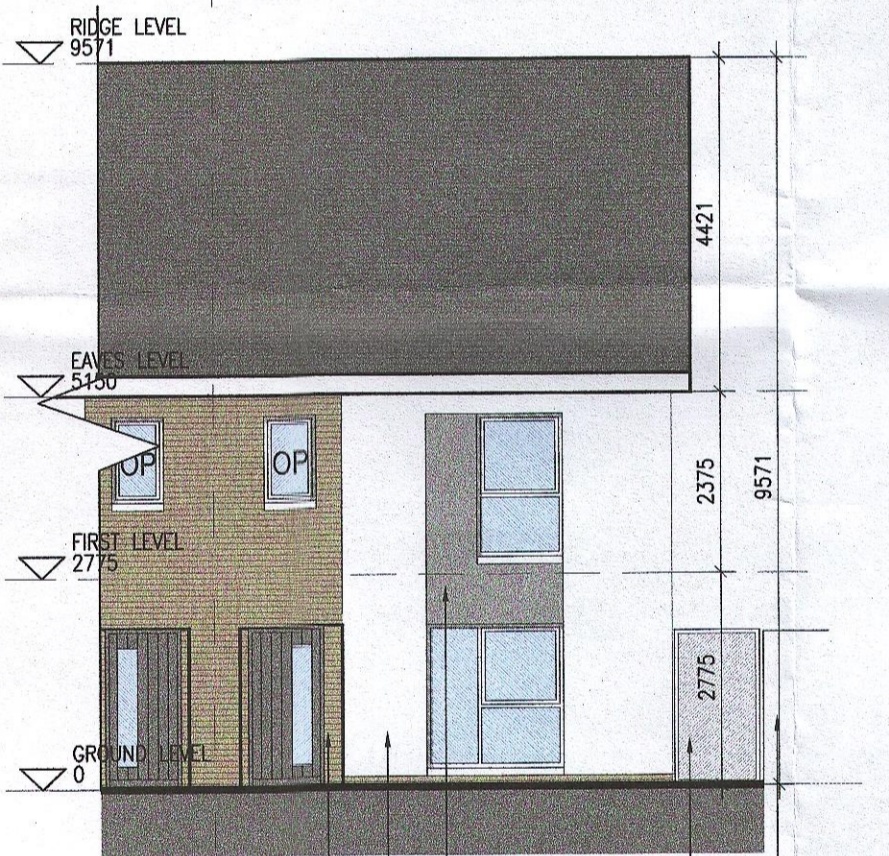
Ground floor area 54.0m<sup>2</sup>  
First floor area 55.5m<sup>2</sup>  
Total Floor Area (3-bed unit): 109.5m<sup>2</sup>



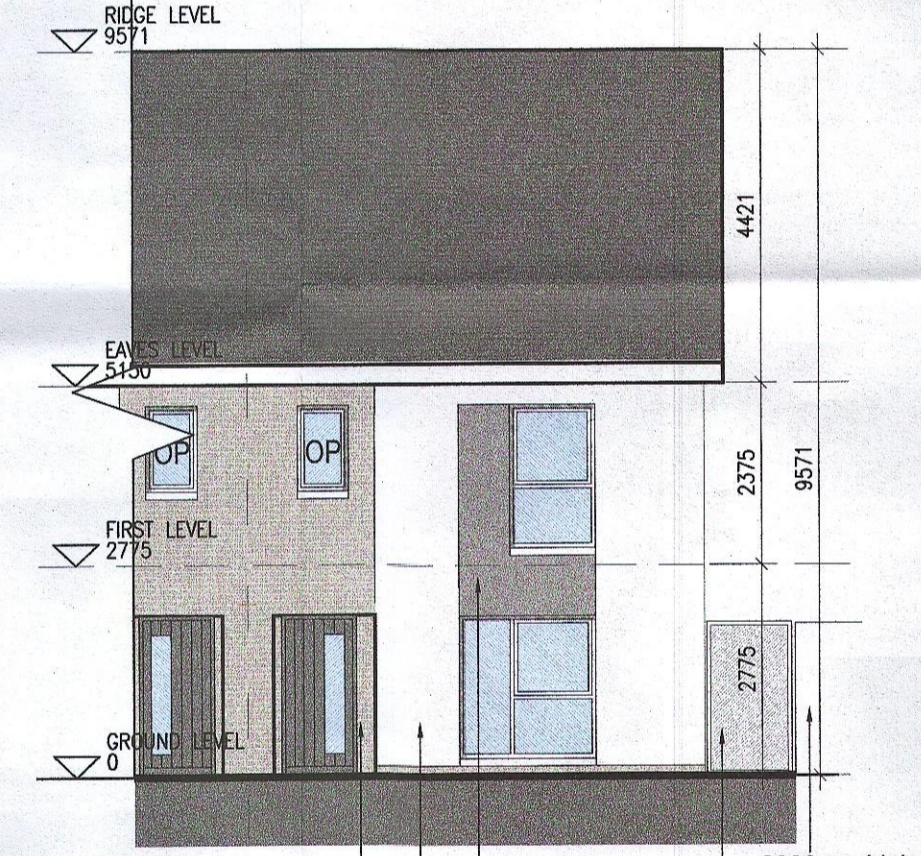
Indicates unit locations  
KEY PLAN [NTS]

HOUSE TYPES	unit type	No. of beds	No. of storeys	No. of units
Type A	- 4 bed	3 storeys	11	
Type B	- 4 bed	3 storeys	15	
Type C	- 4 bed	2 storeys	11	
Type D	- 3 bed	2 storeys	46	
Type E	- 3 bed	2 storeys	41	
Type F	- 3 bed	2 storeys	15	

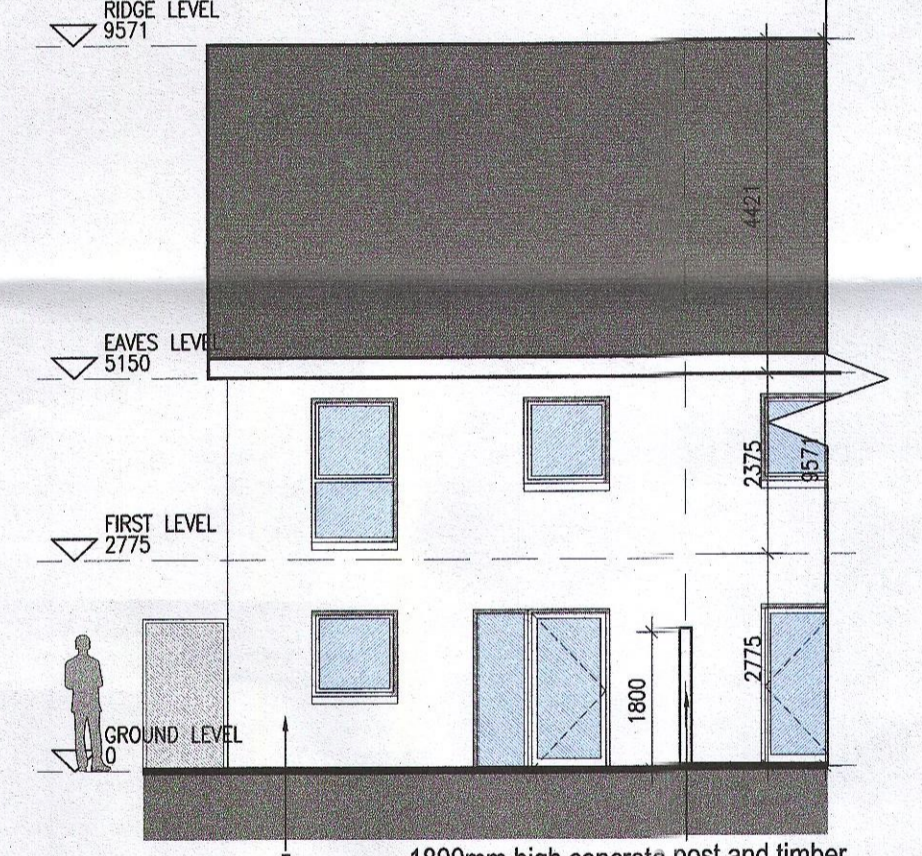
139



04 Front Elevation Type D



05 Front Elevation Type L



06 Rear Elevation

**EXTERNAL FINISHES**

WALLS: PAINTED SAND / CEMENT RENDER OR PROPRIETARY PRECOLOURED RENDER FINISH SELECTED BRICKWORK WHERE INDICATED ON DRAWINGS

WINDOWS: SELECTED PROPRIETARY DOUBLE / TRIPLE GLAZED WINDOW SYSTEM WITH FRAMES TO APPROVED COLOUR OBTAINED BY GLAZING TO BATHROOMS AND EN-SUITES.

DOORS: SELECTED PROPRIETARY DOORS AND GLAZED SIDE SCREENS TO APPROVED COLOUR.

RAINWATER GOODS: uPVC OR POWDER COATED METAL GUTTERS AND RAINWATER PIPES TO SELECTED COLOUR.

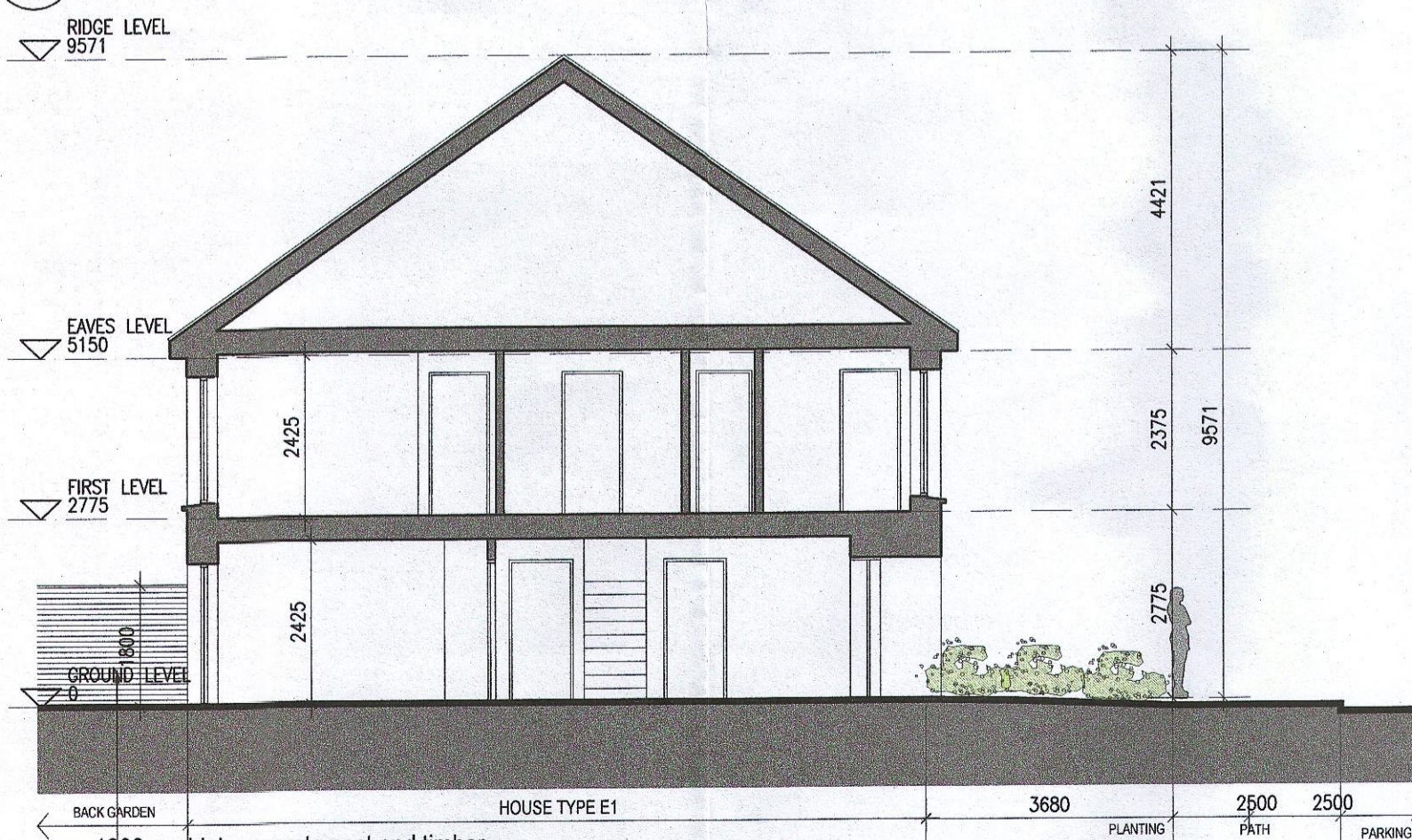
MAIN ROOF: CONCRETE ROOF TILES IN SELECTED COLOUR.

LOW LEVEL PROJECTION: ZINC CANOPY TO ENTRANCE OF UNITS

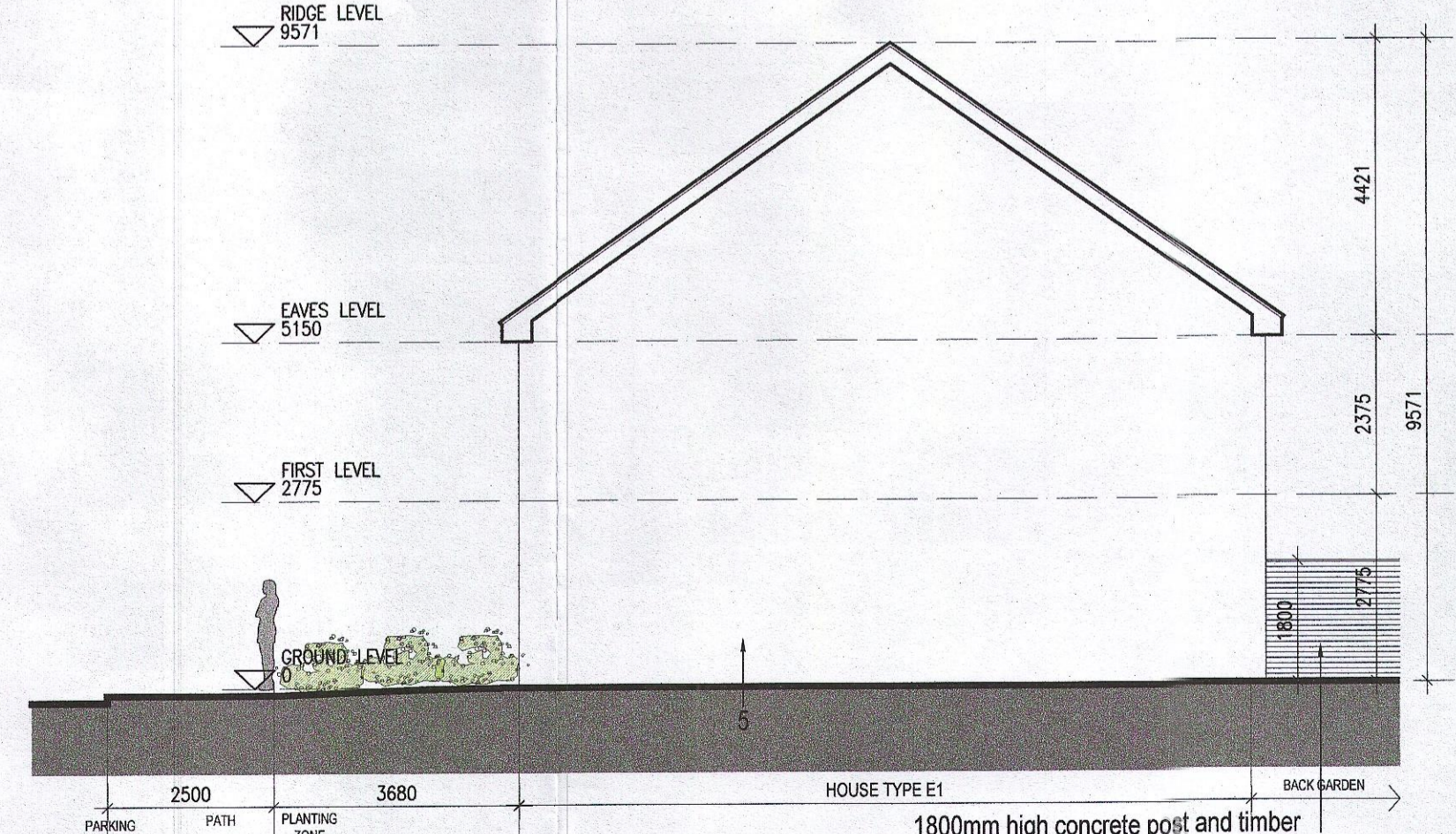
OTHER ITEMS: uPVC OR POWDER COATED METAL FASCIAS, SOFFITS AND BARGE BOARDS PAINTED MILDSTEEL RAILINGS AND BALUSTRADES

**MATERIAL CODE LEGEND**

01	- BUFF BRICK - STANDARD BOND - LIGHT APPROVED TONE
02	- BUFF BRICK - FEATURE BOND - LIGHT APPROVED TONE
03	- BUFF BRICK - STANDARD BOND - BROWN APPROVED TONE
04	- BUFF BRICK - FEATURE BOND - BROWN APPROVED TONE
05	- SELF COLOURED RENDER - LIGHT APPROVED TONE
06	- SELF COLOURED RENDER - DARK APPROVED TONE
07	- CONCRETE ROOF TILES - DARK APPROVED TONE
08	- POWDERCOATED METALWORK OR uPVC - DARK APPROVED RAL COLOUR
09	- POWDERCOATED METAL SCREENING - DARK APPROVED RAL COLOUR
10	- CLEAR GLAZING WITH DARK APPROVED RAL COLOUR FRAMING
11	- OPACIFIED GLAZING WITH DARK APPROVED RAL COLOUR FRAMING



07 Section [A-A]



08 Side Elevation

**REFER TO STREET ELEVATIONS FOR LOCATION OF ELEVATION TYPES**

**REFER TO LANDSCAPE ARCHITECT'S DRAWINGS FOR ALL LANDSCAPING DETAILS INCLUDING BOUNDARY TREATMENTS**

Notes	Issue Status
1. Copyright Reserved	Progress
2. Work to figured dimensions only. Do not scale drawing	Planning Application
3. The contractor is responsible for checking all levels and dimensions on site and shall refer all discrepancies to the Architect	Fire Cert
4. Where appropriate, for details of c. structure, or mechanical and electrical details, see Engineers drawings	Disability Cert
5. Proprietary items shall be fixed in strict accordance with manufacturers instructions.	Tender
6. Sizes of proprietary items shall be checked with manufacturer.	Construction
7. The contractor shall be responsible for the coordination of structure, finishes and services.	As Built
	Information Only

No.	Date	Revision	Initials
01	27/01/23	Planning Application	IFJ

Project: Adamstown Extension - Clonburris SDZ  
Residential Development

Drawing Title: House Type E2\_End\_Non-Handed\_Plans, Elevations and Section

Drawing No: 6268-P-120

Scale: 1:100 @ A1 | Rev: 01 | Drawn: IFJ | Date: Jan 23

6-7 HARCOURT TERRACE, DUBLIN 2, IRELAND  
t +353-1-916 2000 f +353-1-676 7386  
e architecture@bkd.ie  
www.bkd.ie

**bkdarchitects**  
BURKE-KENNEDY DOYLE