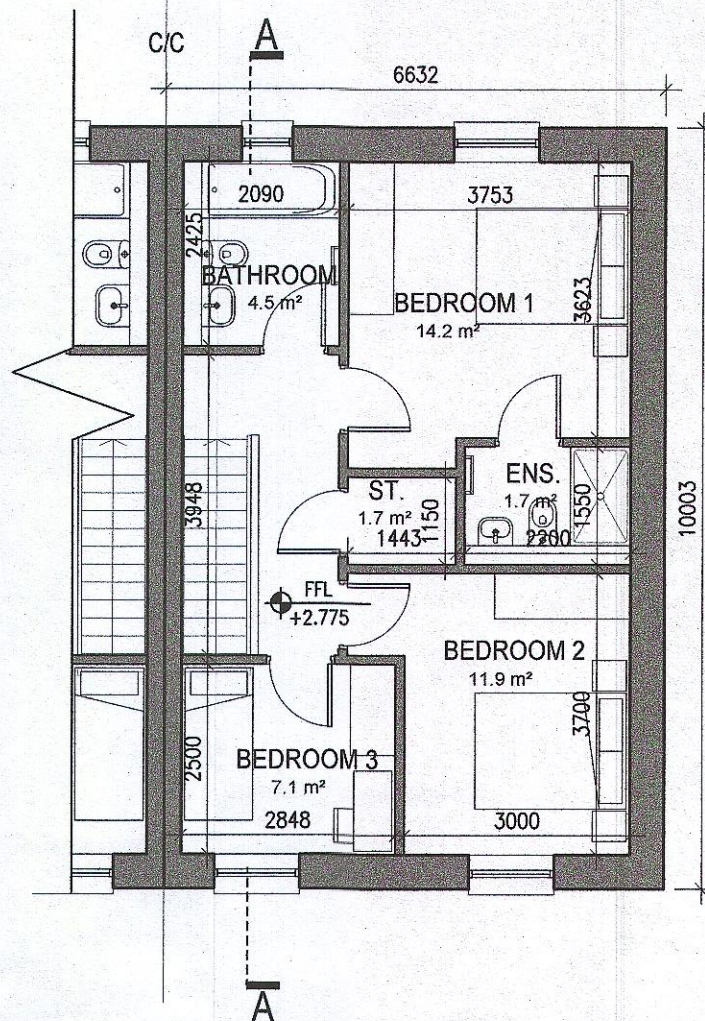
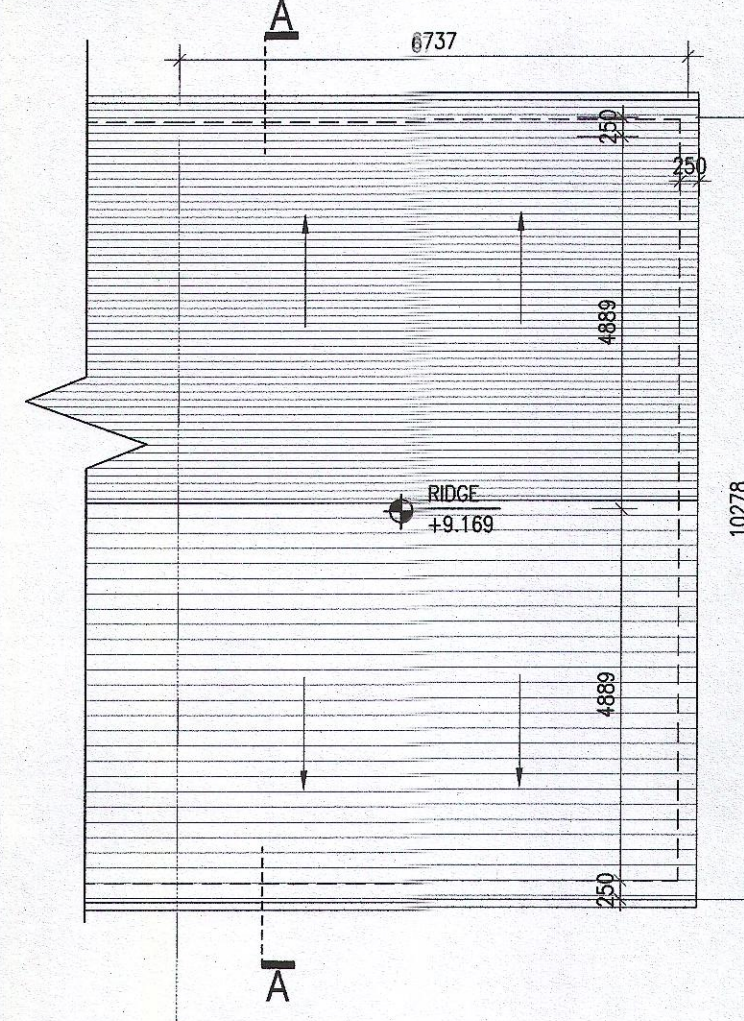


01  
117  
Ground Floor Plan

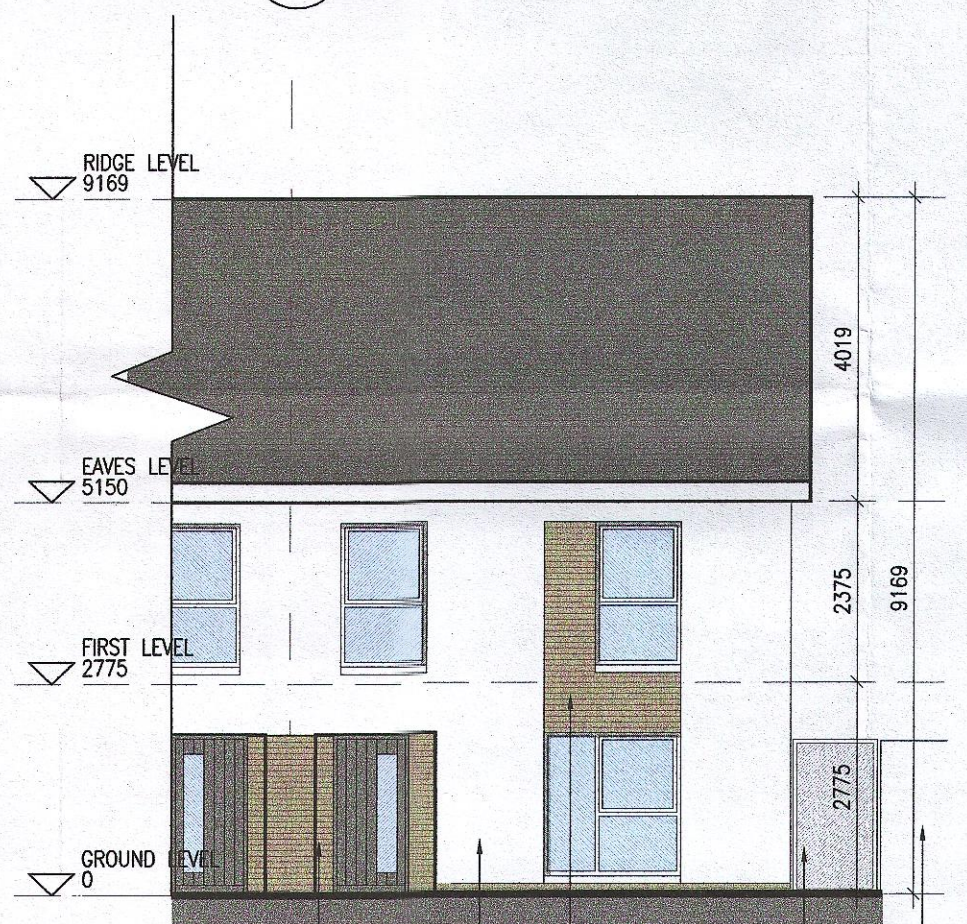
HOUSE TYPE D2  
Ground floor area 52.3m<sup>2</sup>  
First floor area 54.2m<sup>2</sup>  
Total Floor Area (3-bed unit): 106.5m<sup>2</sup>



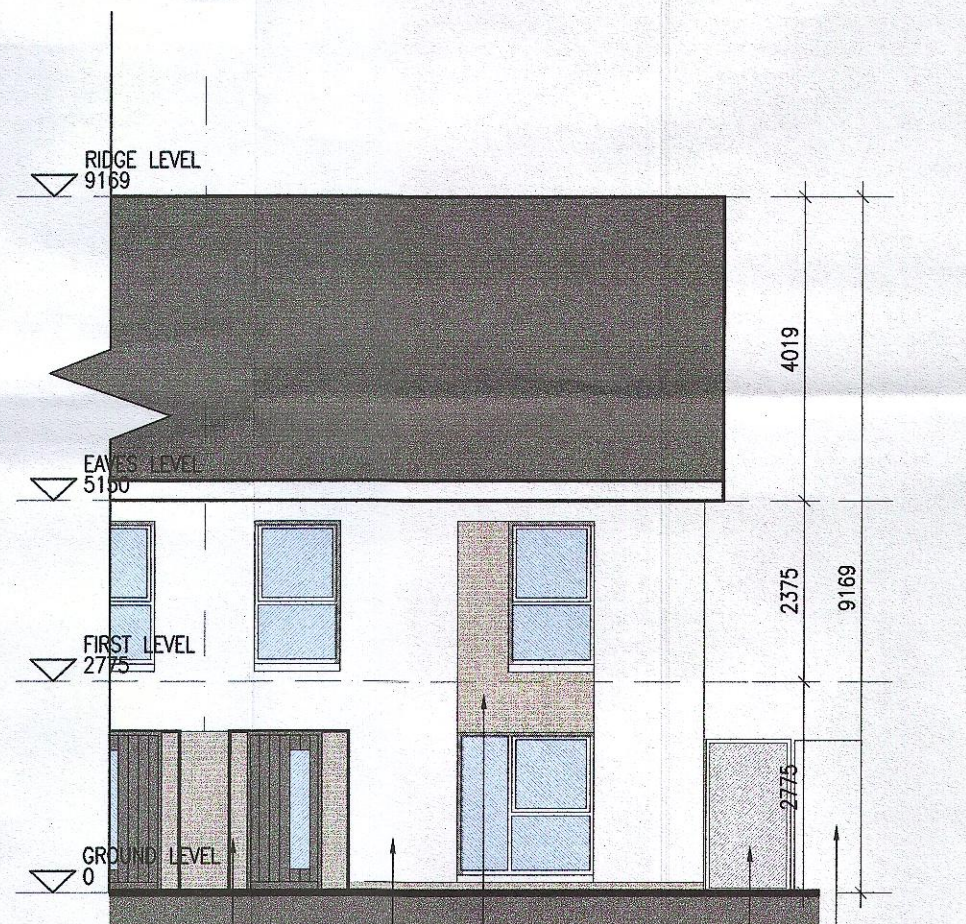
02  
117  
First Floor Plan



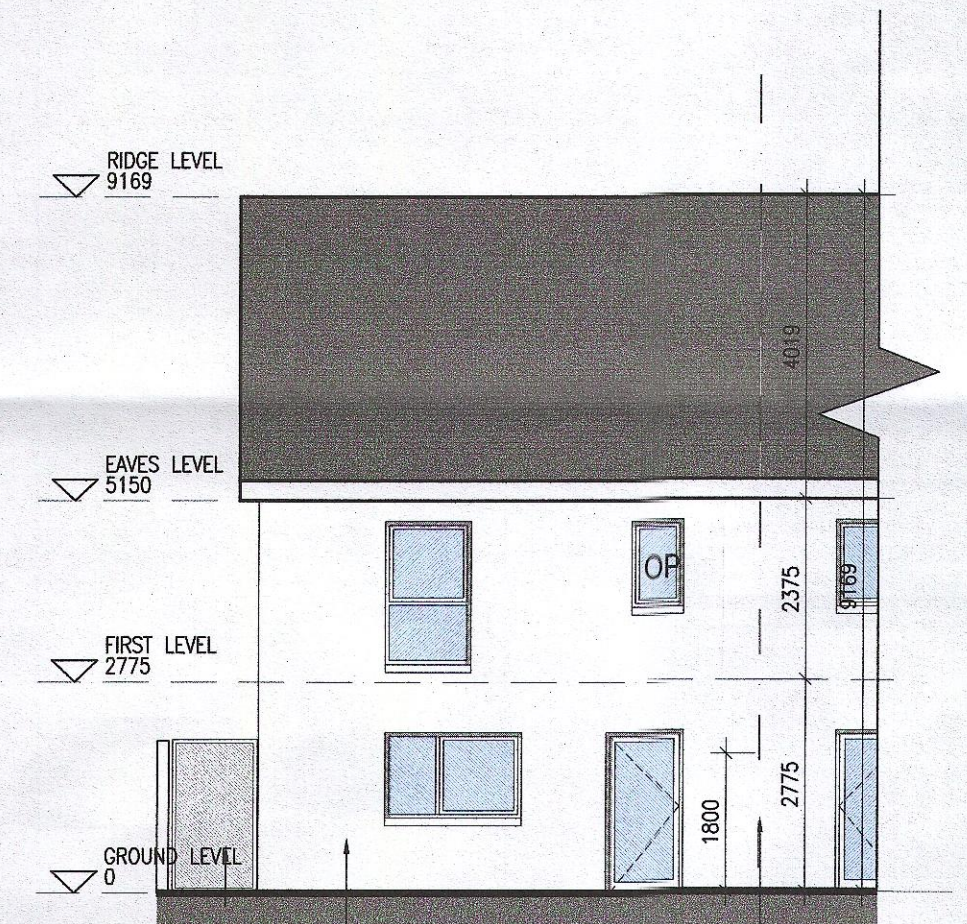
03  
117  
Roof Floor Plan  
1:100@A1



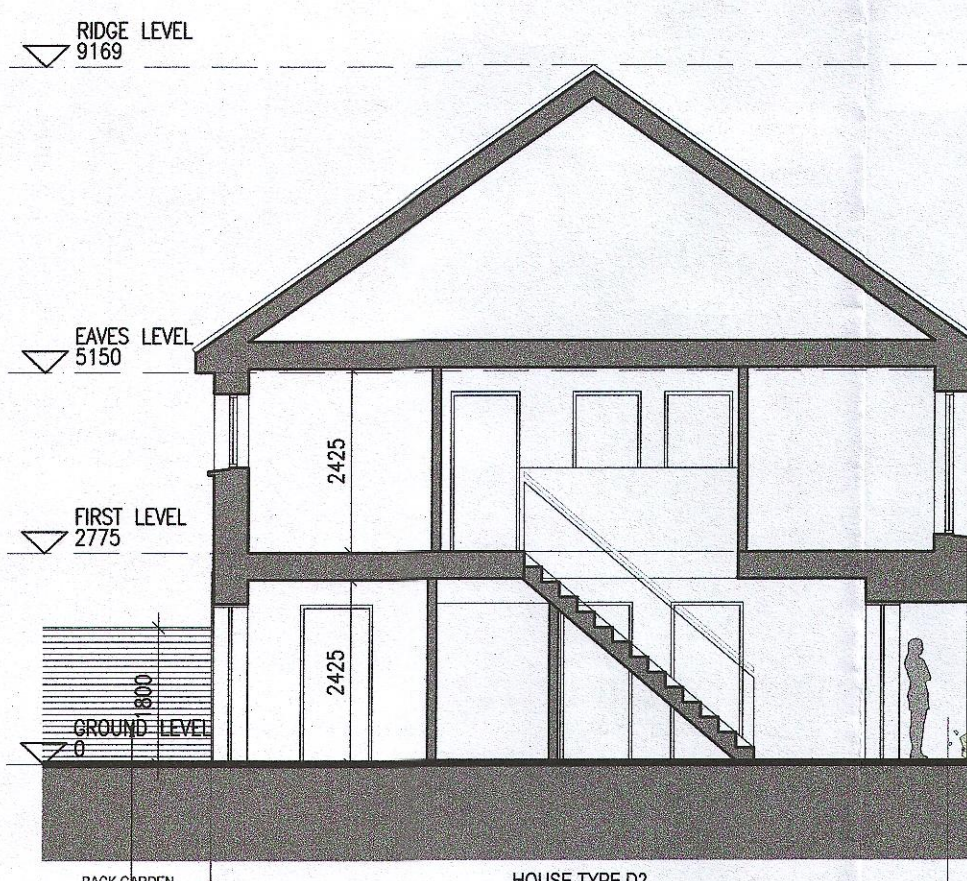
04  
117  
Front Elevation Type D  
1:100@A1



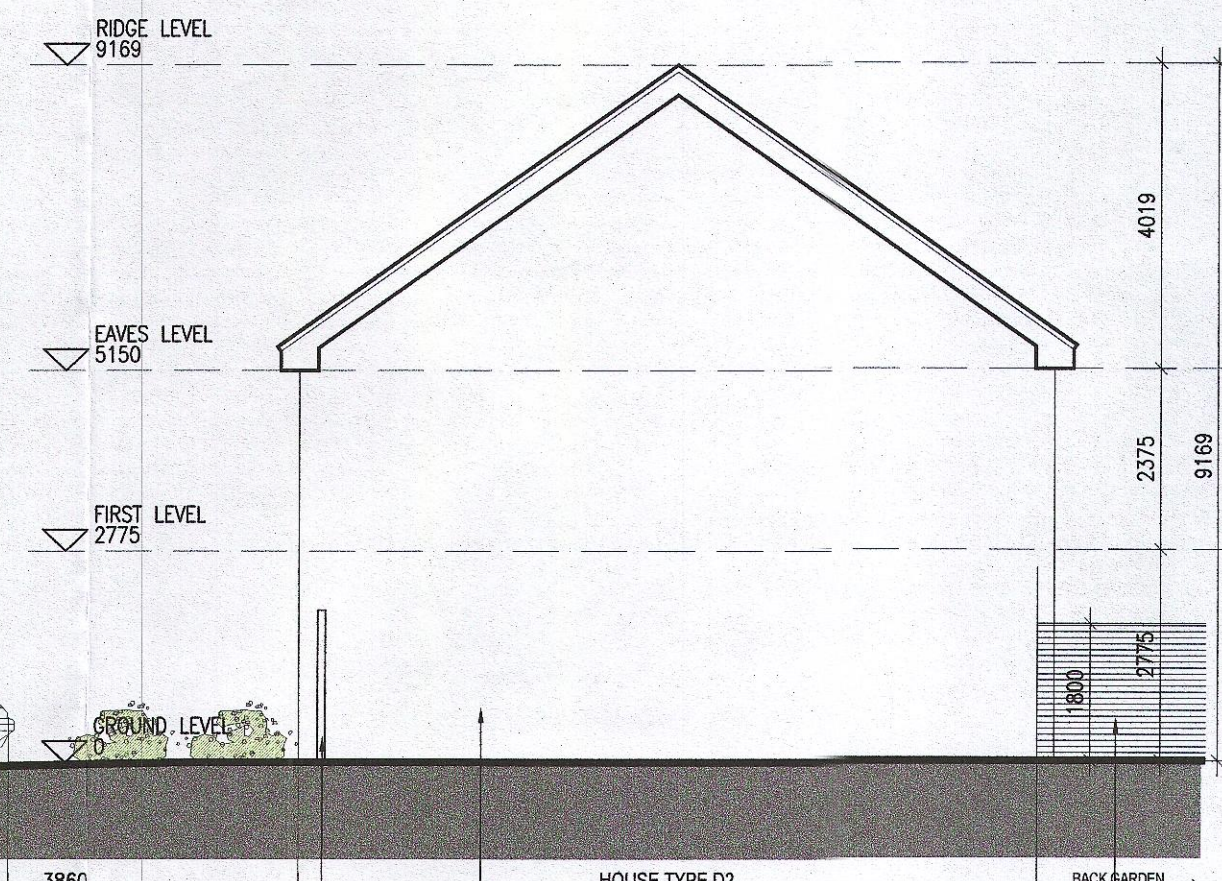
05  
117  
Front Elevation Type L  
1:100@A1



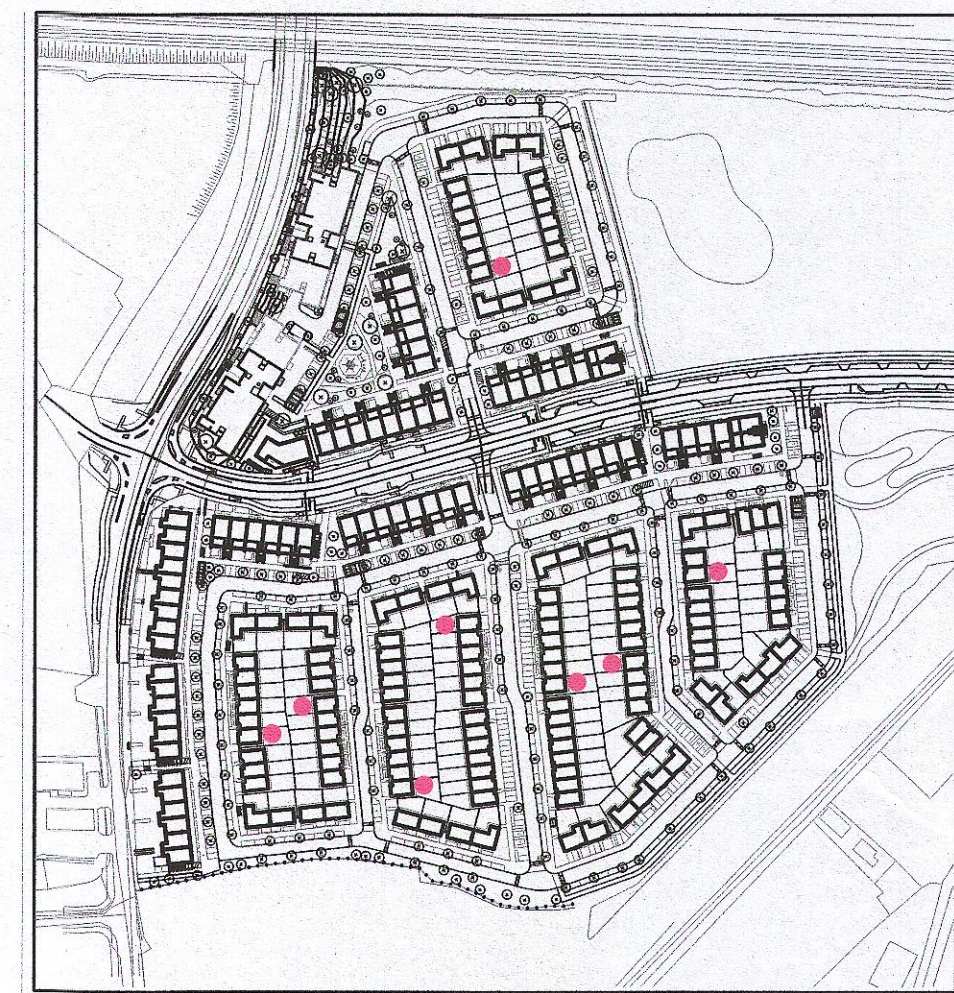
06  
117  
Rear Elevation  
1:100@A1



07  
117  
Section [A-A]  
1:100@A1



08  
117  
Side Elevation (Type R)  
1:100@A1



Indicates unit locations  
**KEY PLAN [NTS]**



HOUSE TYPES	unit type	No. of beds	No. of storeys	No. of units
Type A	- 4 bed	3 storeys	11	
Type B	- 4 bed	3 storeys	15	
Type C	- 4 bed	2 storeys	11	
Type D	- 3 bed	2 storeys	46	
Type E	- 3 bed	2 storeys	41	
Type F	- 3 bed	2 storeys	15	

139

**EXTERNAL FINISHES**

**WALLS:** PAINTED SAND / CEMENT RENDER OR PROPRIETARY PRECOLOURED RENDER FINISH  
SELECTED BRICKWORK WHERE INDICATED ON DRAWINGS

**WINDOWS:** SELECTED PROPRIETARY DOUBLE / TRIPLE GLAZED WINDOW SYSTEM WITH FRAMES TO APPROVED COLOUR. OBSCURED GLAZING TO BATHROOMS AND EN-SUITES.

**DOORS:** SELECTED PROPRIETARY DOORS AND GLAZED SIDE SCREENS TO APPROVED COLOUR.

**RAINWATER GOODS:** uPVC OR POWDER COATED METAL GUTTERS AND RAINWATER PIPES TO SELECTED COLOUR.

**MAIN ROOF:** CONCRETE ROOF TILES IN SELECTED COLOUR.

**LOW LEVEL PROJECTION:** ZINC CANOPY TO ENTRANCE OF UNITS

**OTHER ITEMS:** uPVC OR POWDER COATED METAL FASCIAS, SOFFITS AND BARGE BOARDS PAINTED  
MILDSTEEL RAILINGS AND BALUSTRADES

**MATERIAL CODE LEGEND**

01	– BUFF BRICK – STANDARD BOND – LIGHT APPROVED TONE
02	– BUFF BRICK – FEATURE BOND – LIGHT APPROVED TONE
03	– BUFF BRICK – STANDARD BOND – BROWN APPROVED TONE
04	– BUFF BRICK – FEATURE BOND – BROWN APPROVED TONE
05	– SELF COLOURED RENDER – LIGHT APPROVED TONE
06	– SELF COLOURED RENDER – DARK APPROVED TONE
07	– CONCRETE ROOF TILES – DARK APPROVED TONE
08	– POWDERCOATED METALWORK OR uPVC – DARK APPROVED RAL COLOUR
09	– POWDERCOATED METAL SCREENING – DARK APPROVED RAL COLOUR
10	– CLEAR GLAZING WITH DARK APPROVED RAL COLOUR FRAMING
11	– OPACIFIED GLAZING WITH DARK APPROVED RAL COLOUR FRAMING

**REFER TO STREET ELEVATIONS FOR LOCATION OF ELEVATION TYPES**

**REFER TO LANDSCAPE ARCHITECT'S DRAWINGS FOR ALL LANDSCAPING DETAILS INCLUDING BOUNDARY TREATMENTS**

No.	Date	Revision	Initials
01	27/01/23	Planning Application	IFJ

Issue Status	Progress
Planning Application	
Fire Cert	
Disability Cert	
Tender	
Construction	
As Built	
Information Only	

Notes:  
1. Copyright Reserved  
2. Work to figured dimensions only. Do not scale drawing.  
3. The contractor is responsible for checking all levels and dimensions on site and shall refer all discrepancies to the Architect.  
4. Where appropriate, for details of r.c. structure, or mechanical and electrical details, see Engineers drawings.  
5. Proprietary items shall be fixed in strict accordance with manufacturers instructions.  
6. Sizes of proprietary items shall be checked with manufacturer.  
7. The contractor shall be responsible for the coordination of structure, finishes and services.

M:\Project Section - Current\6268 Conburris Housing\CAD\Drawings\Planning\Titlesheet\100 Series - House Types\6268-P-117-118\_House Type D2.dwg 30/01/2023 17:29:10

Project **Adamstown Extension - Clonburris SDZ Residential Development**

Drawing Title **House Type D2\_End\_Non-Handed\_Plans, Elevations and Section**

Drawing No **6268-P-117**

Scale **1:100 @ A1** Rev **01** Drawn **IFJ** Date **Jan'23**

6-7 HARCOURT TERRACE, DUBLIN 2, IRELAND  
t: +353-1-618 2400 f: +353-1-678 7365  
www.bkd.ie

**bkdarchitects**  
BURKE-KENNEDY DOYLE