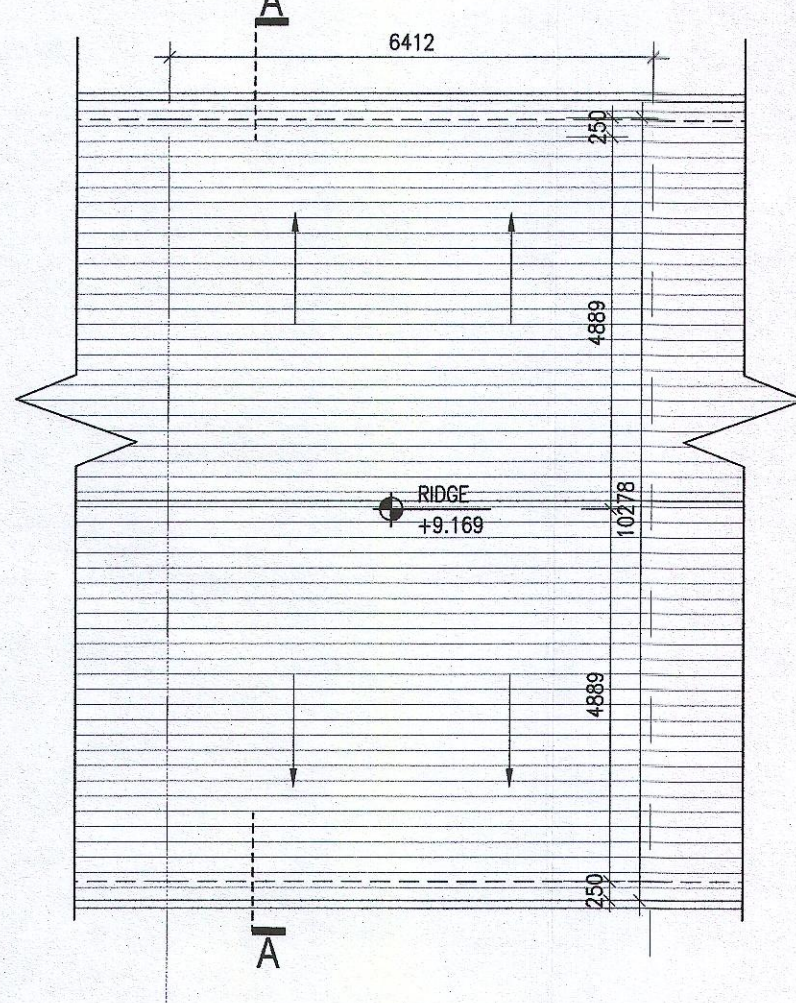
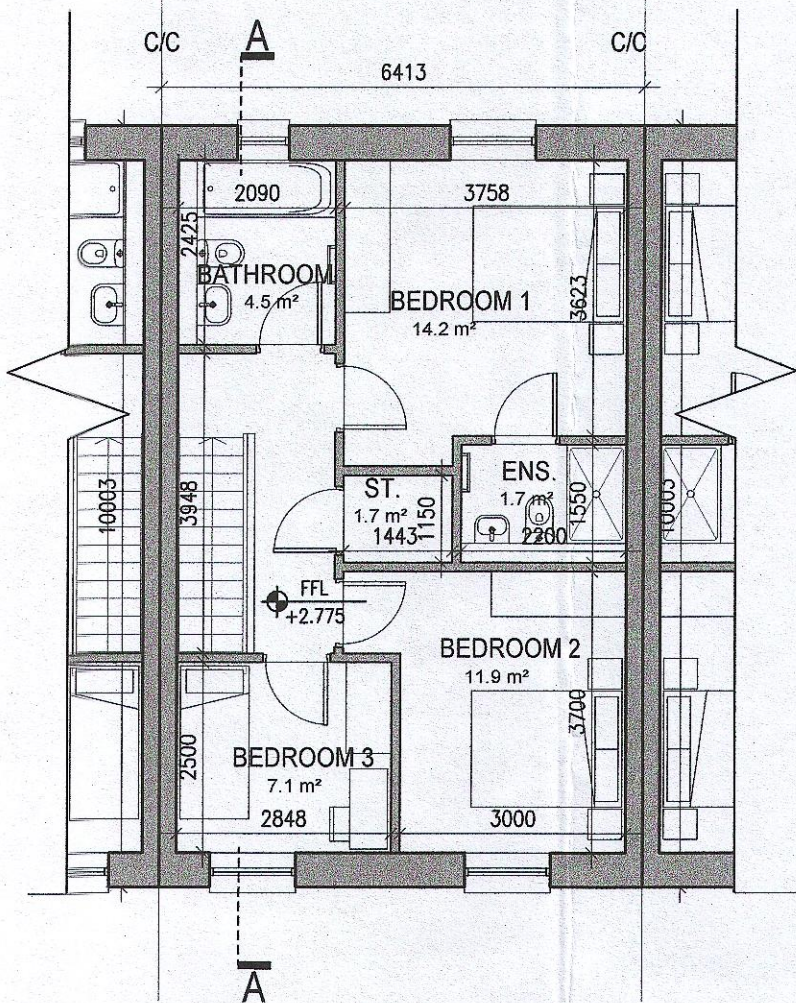
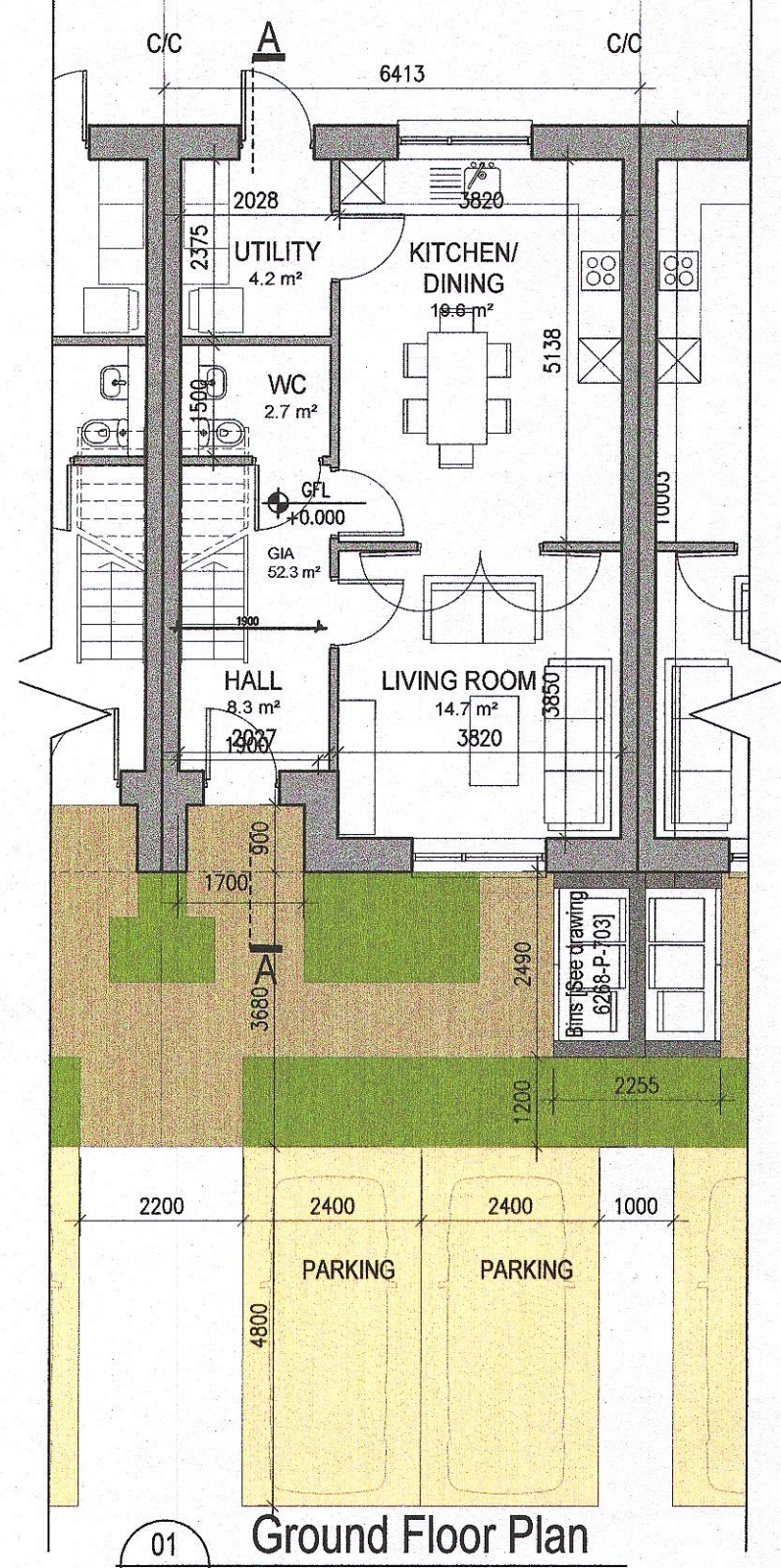


**HOUSE TYPE D1
NON-HANDED**

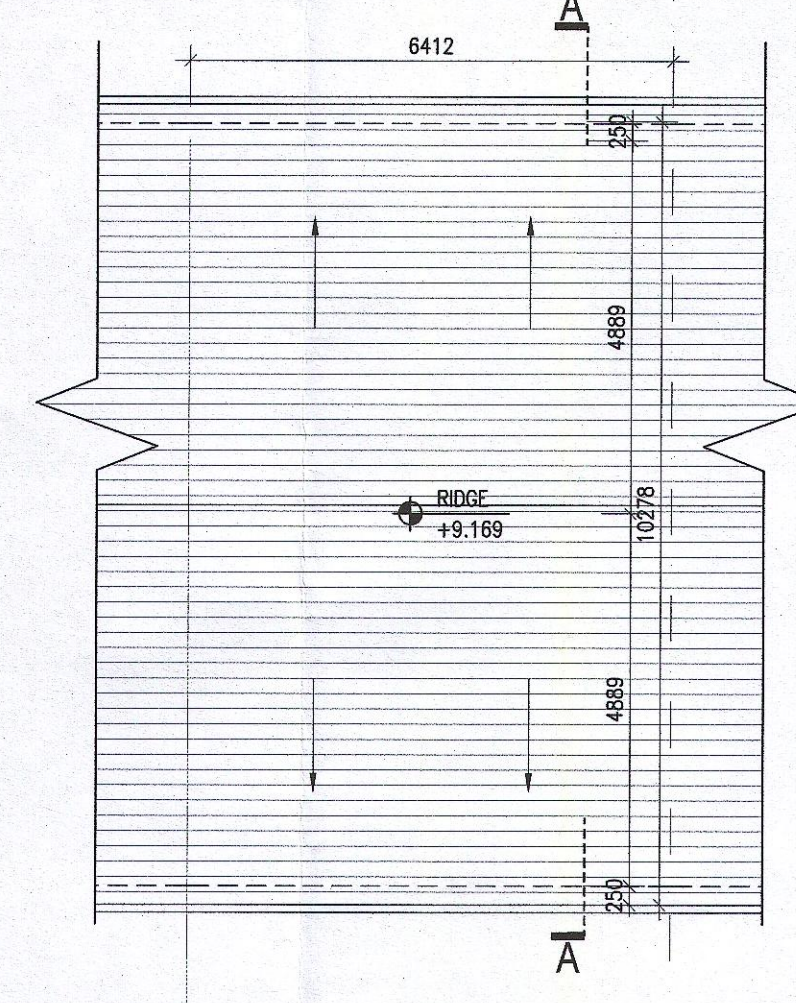
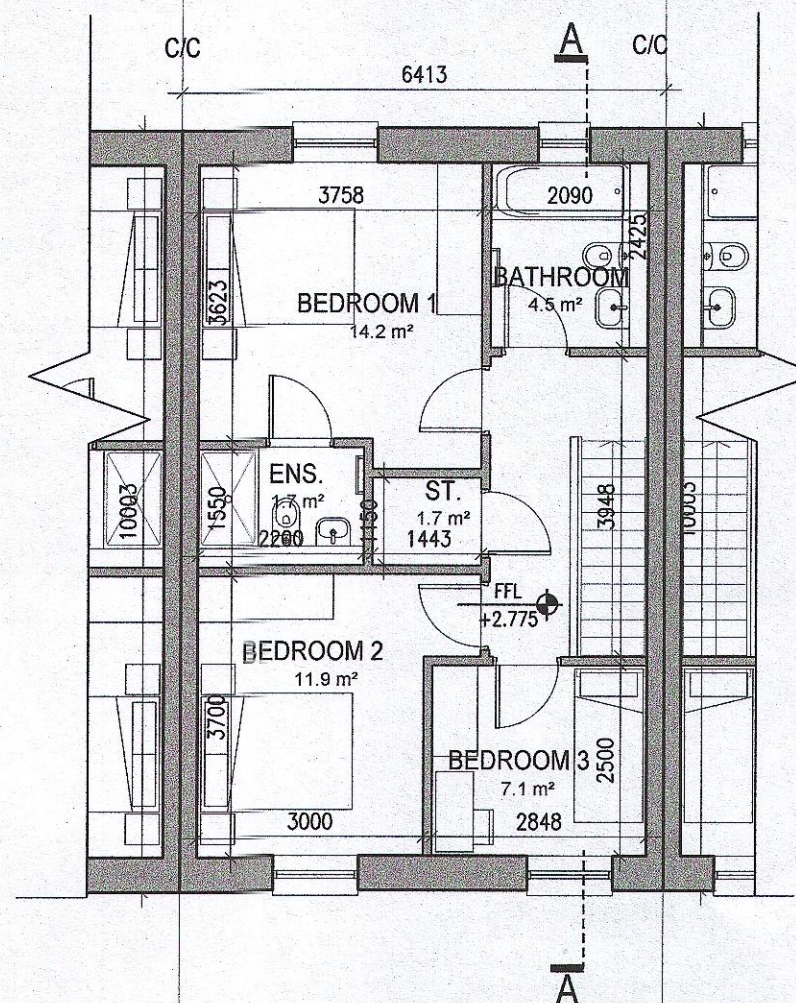
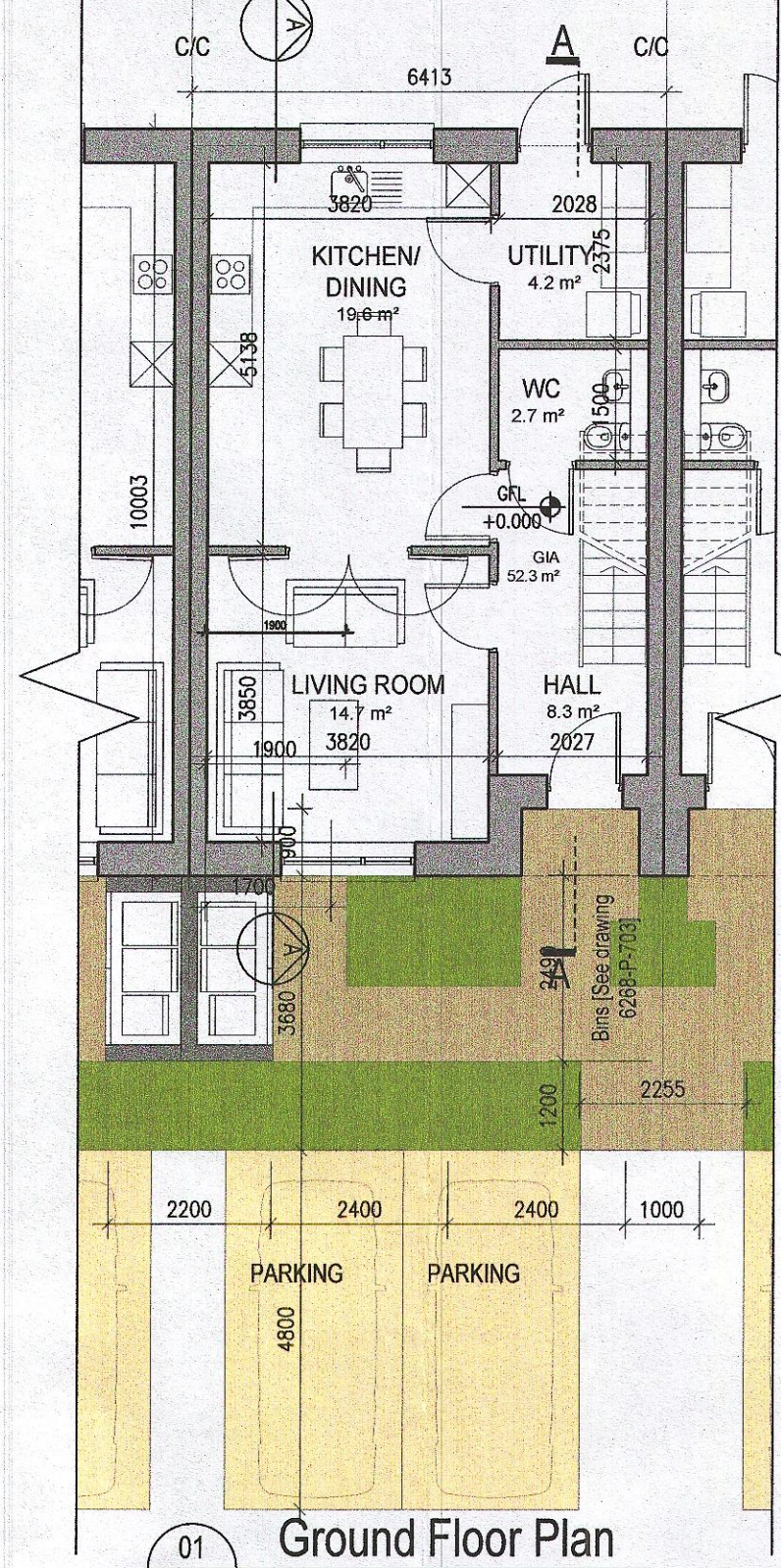


02 First Floor Plan
116

03 Roof Floor Plan
1:100BA1

HOUSE TYPE D1
Ground floor area 52.3m²
First floor area 54.3m²
Total Floor Area (3-bed unit): 106.6m²

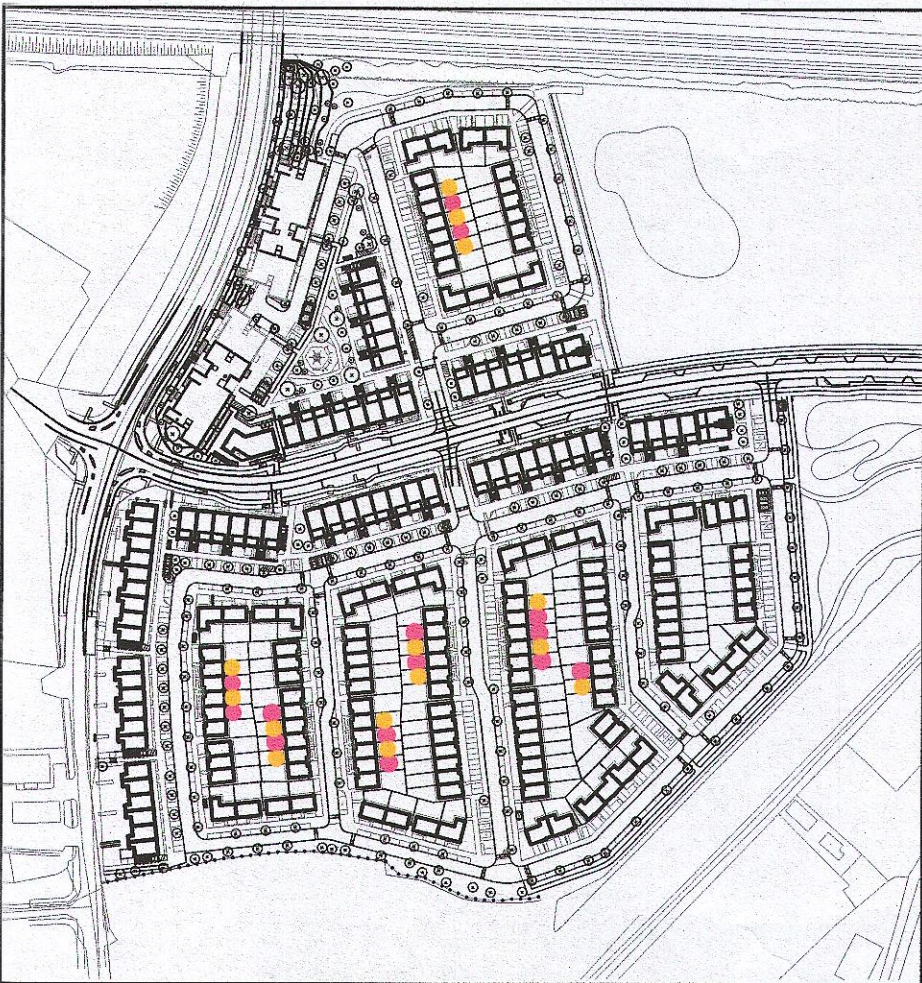
**HOUSE TYPE D1
HANDED**



02 First Floor Plan
116

03 Roof Floor Plan
1:100BA1

HOUSE TYPE D1
Ground floor area 52.0m²
First floor area 54.0m²
Total Floor Area (3-bed unit): 106.0m²



- Indicates unit locations-HANDED
- Indicates unit locations-NON-HANDED

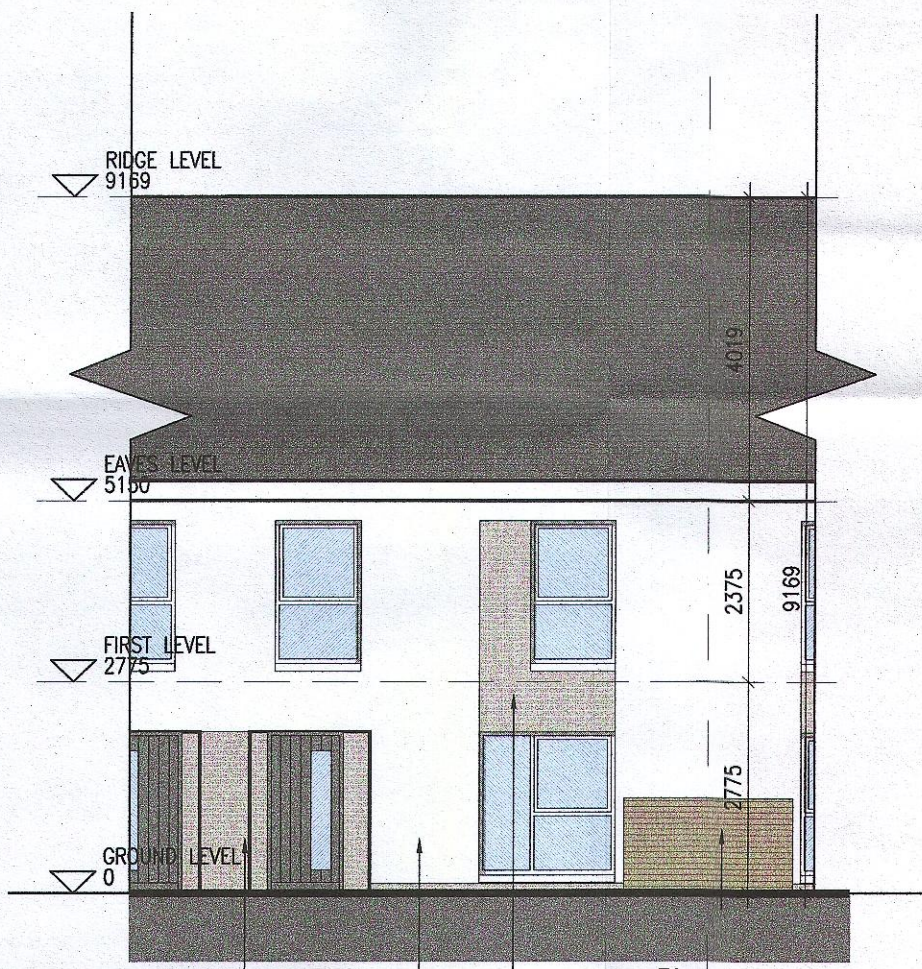
KEY PLAN [NTS]

HOUSE TYPES	unit type	No. of beds	No. of storeys	No. of units
Type A	- 4 bed	3 storeys	11	
Type B	- 4 bed	3 storeys	15	
Type C	- 4 bed	2 storeys	11	
Type D	- 3 bed	2 storeys	46	
Type E	- 3 bed	2 storeys	41	
Type F	- 3 bed	2 storeys	15	

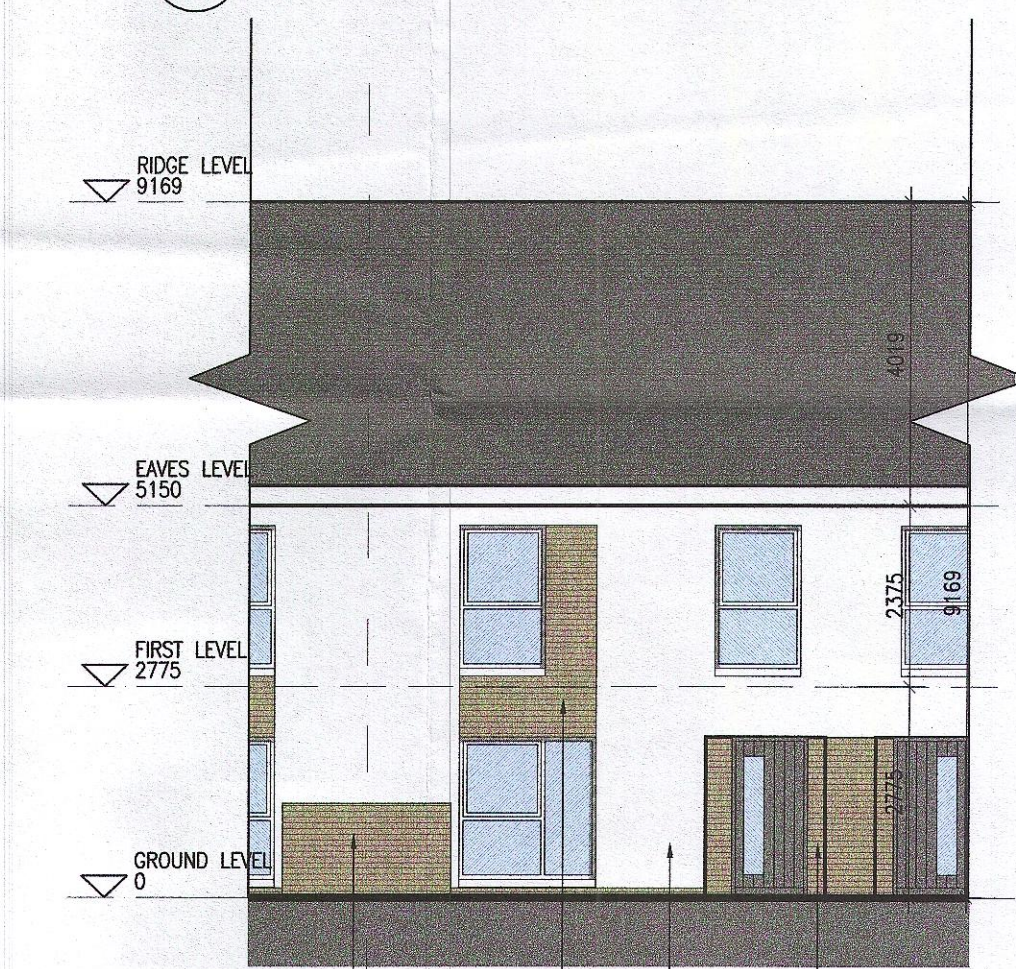
139



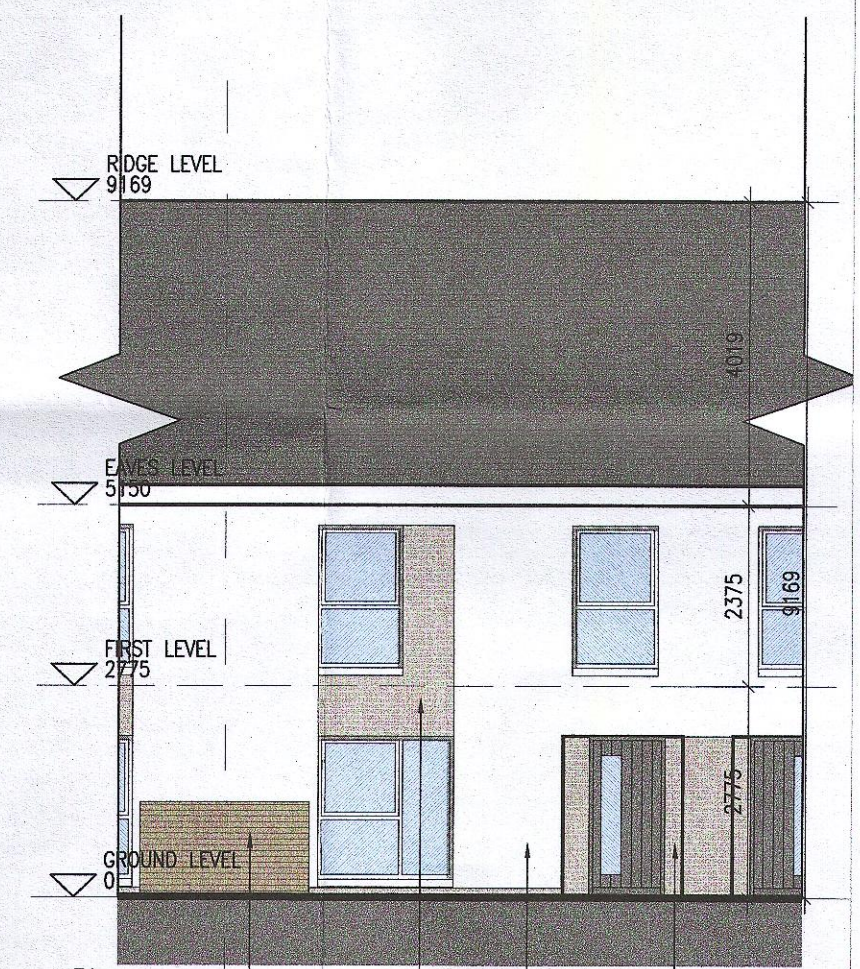
04 Front Elevation Type D
116



05 Front Elevation Type
116



04 Front Elevation Type D
116



05 Front Elevation Type L
116

EXTERNAL FINISHES

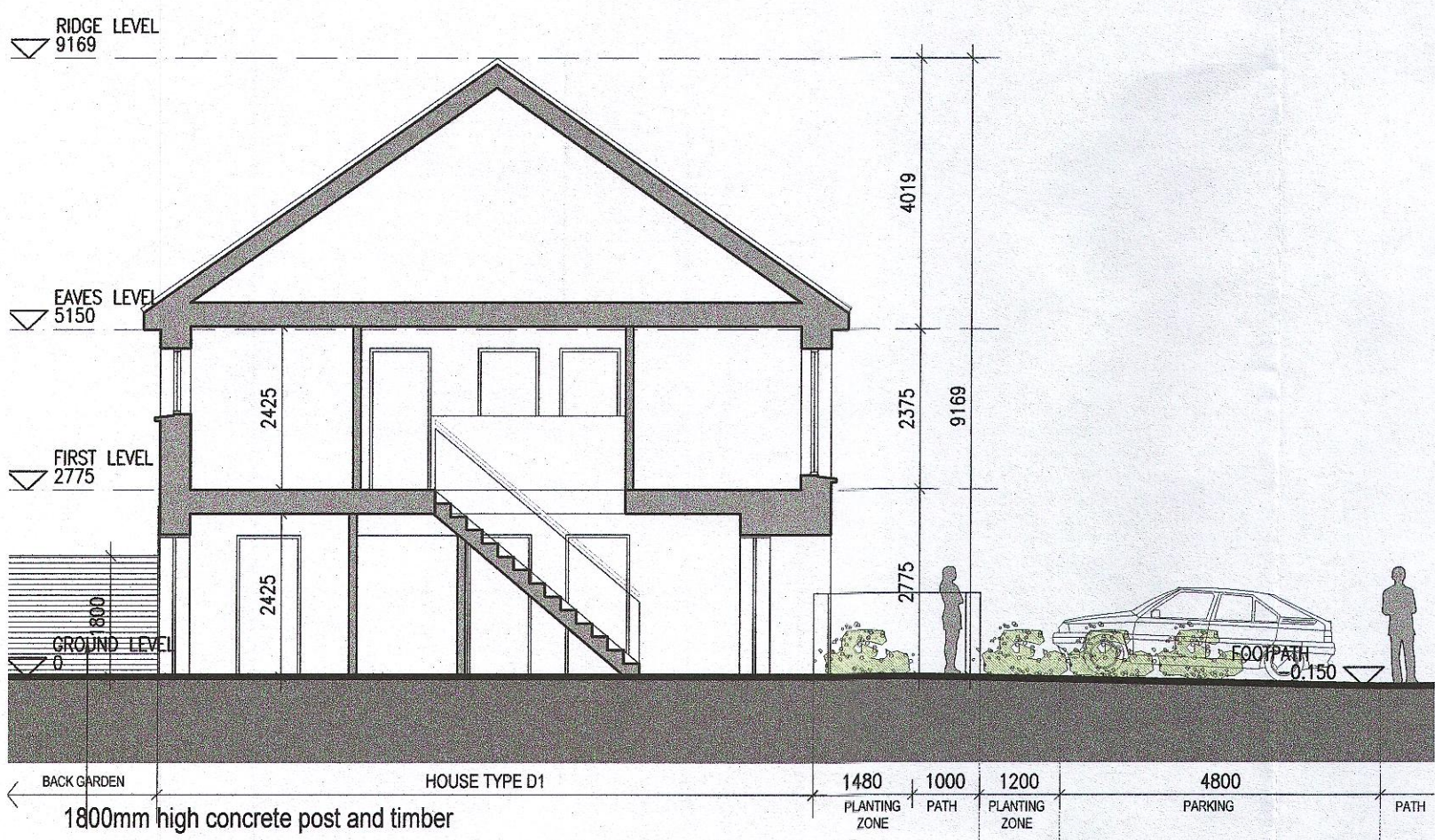
- WALLS:** PAINTED SAND / CEMENT RENDER OR PROPRIETARY PRECOLOURED RENDER FINISH. SELECTED BRICKWORK WHERE INDICATED ON DRAWINGS.
- WINDOWS:** SELECTED PROPRIETARY DOUBLE / TRIPLE GLAZED WINDOW SYSTEM WITH FRAMES TO APPROVED COLOUR. OBSCURED GLAZING TO BATHROOMS AND EN-SUITES.
- DOORS:** SELECTED PROPRIETARY DOORS AND GLAZED SIDE SCREENS TO APPROVED COLOUR.
- RAINWATER GOODS:** uPVC OR POWDER COATED METAL GUTTERS AND RAINWATER PIPES TO SELECTED COLOUR.
- MAIN ROOF:** CONCRETE ROOF TILES IN SELECTED COLOUR.
- LOW LEVEL PROJECTION:** ZINC CANOPY TO ENTRANCE OF UNITS.
- OTHER ITEMS:** uPVC OR POWDER COATED METAL FASCIAS, SOFFITS AND BARGE BOARDS PAINTED. MILDSTEEL RAILINGS AND BALUSTRADES.

MATERIAL CODE LEGEND

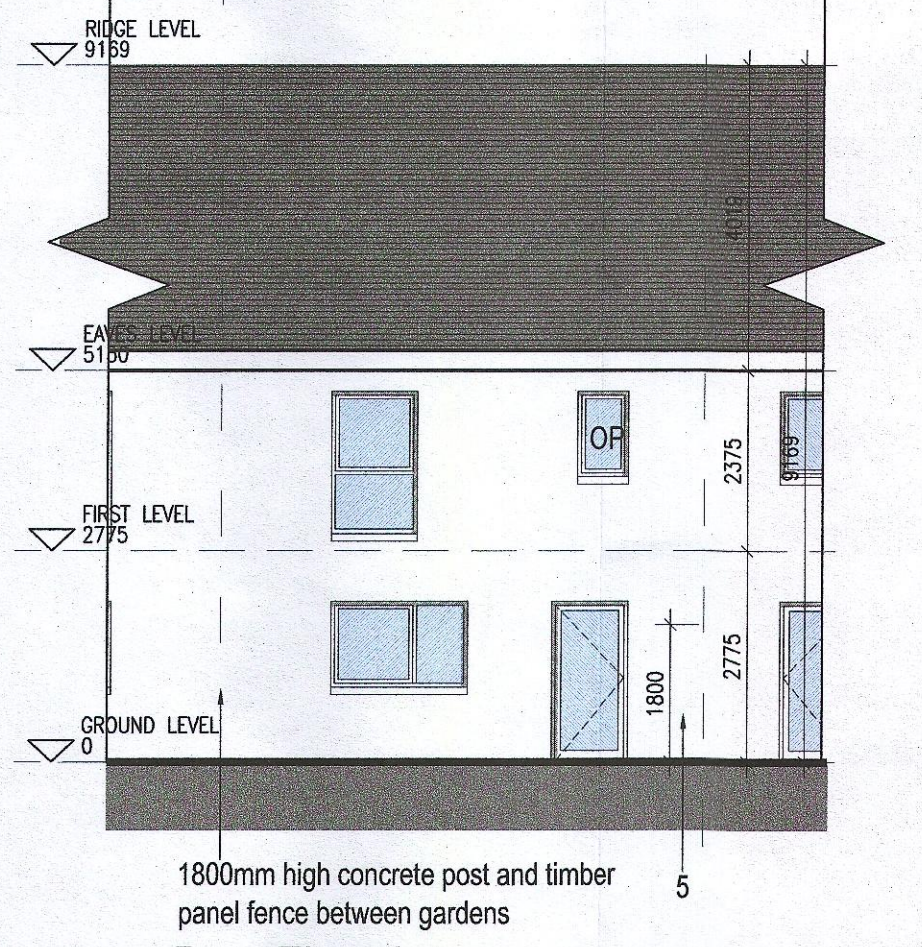
- 01 - BUFF BRICK - STANDARD BOND - LIGHT APPROVED TONE
- 02 - BUFF BRICK - FEATURE BOND - LIGHT APPROVED TONE
- 03 - BUFF BRICK - STANDARD BOND - BROWN APPROVED TONE
- 04 - BUFF BRICK - FEATURE BOND - BROWN APPROVED TONE
- 05 - SELF COLOURED RENDER - LIGHT APPROVED TONE
- 06 - SELF COLOURED RENDER - DARK APPROVED TONE
- 07 - CONCRETE ROOF TILES - DARK APPROVED TONE
- 08 - POWDERCOATED METALWORK OR uPVC - DARK APPROVED RAL COLOUR
- 09 - POWDERCOATED METAL SCREENING - DARK APPROVED RAL COLOUR
- 10 - CLEAR GLAZING WITH DARK APPROVED RAL COLOUR FRAMING
- 11 - OPACIFIED GLAZING WITH DARK APPROVED RAL COLOUR FRAMING

REFER TO STREET ELEVATIONS FOR LOCATION OF ELEVATION TYPES

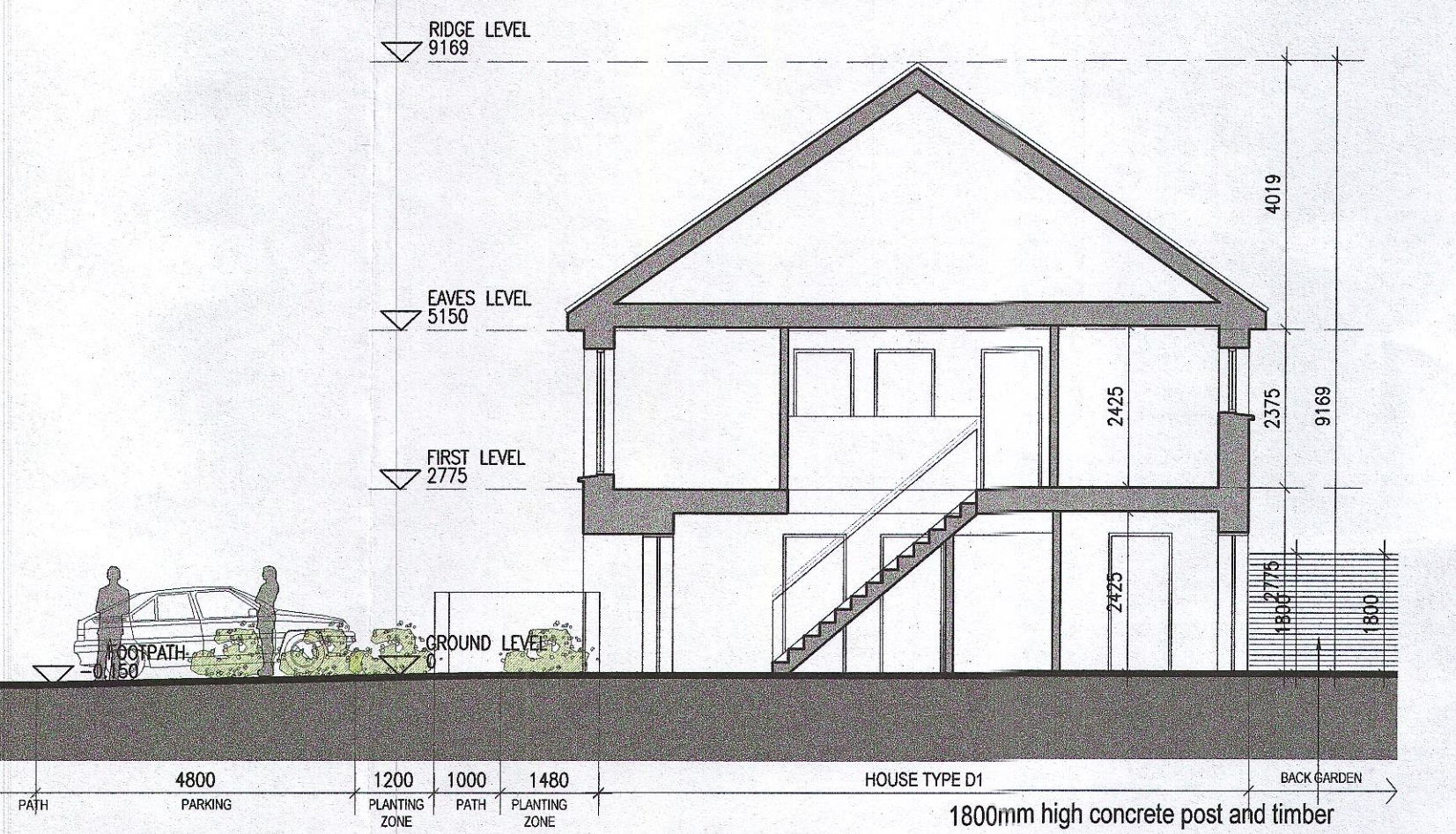
REFER TO LANDSCAPE ARCHITECT'S DRAWINGS FOR ALL LANDSCAPING DETAILS INCLUDING BOUNDARY TREATMENTS



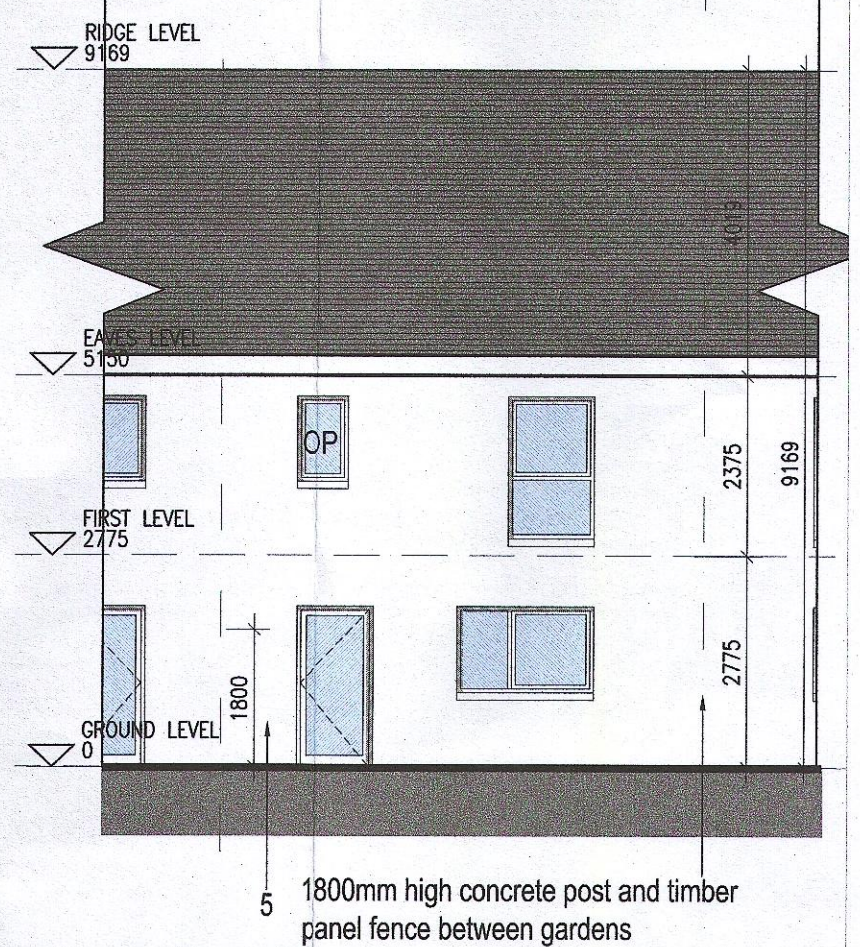
06 Section [A-A]
116



07 Rear Elevation
116



06 Section [A-A]
116



07 Rear Elevation
116

Notes

- Copyright Reserved
- Work to figured dimensions only. Do not scale drawing
- The contractor is responsible for checking all levels and dimensions on site and shall refer all discrepancies to the Architect
- Where appropriate, for details of r.c. structure, or mechanical and electrical details, see Engineers drawings
- Proprietary items shall be fixed in strict accordance with manufacturers instructions.
- Sizes of proprietary items shall be checked with manufacturer.
- The contractor shall be responsible for the coordination of structure, finishes and services.

Issue Status

Progress	Planning Application
Fire Cert	
Disability Cert	
Tender	
Construction	
As Built	
Information Only	

No.	Date	Revision	Initials
01	27/01/23	Planning Application	IFJ

Project
Adamstown Extension - Clonburris SDZ
Residential Development

Drawing Title
House Type D1_Mid_Handed, Non-Handed_Plans, Elevations and Section

Drawing No
6268-P-116

Scale
1:100 @ A1

Rev
01

Drawn
IFJ

Date
Jan'23

6-7 HARPOUR TERRACE, DUBLIN 2, IRELAND
t +353-1-618 2400 f +353-1-678 7886
www.bkd.ie

bkdarchitects
BURKE-KENNEDY DOYLE