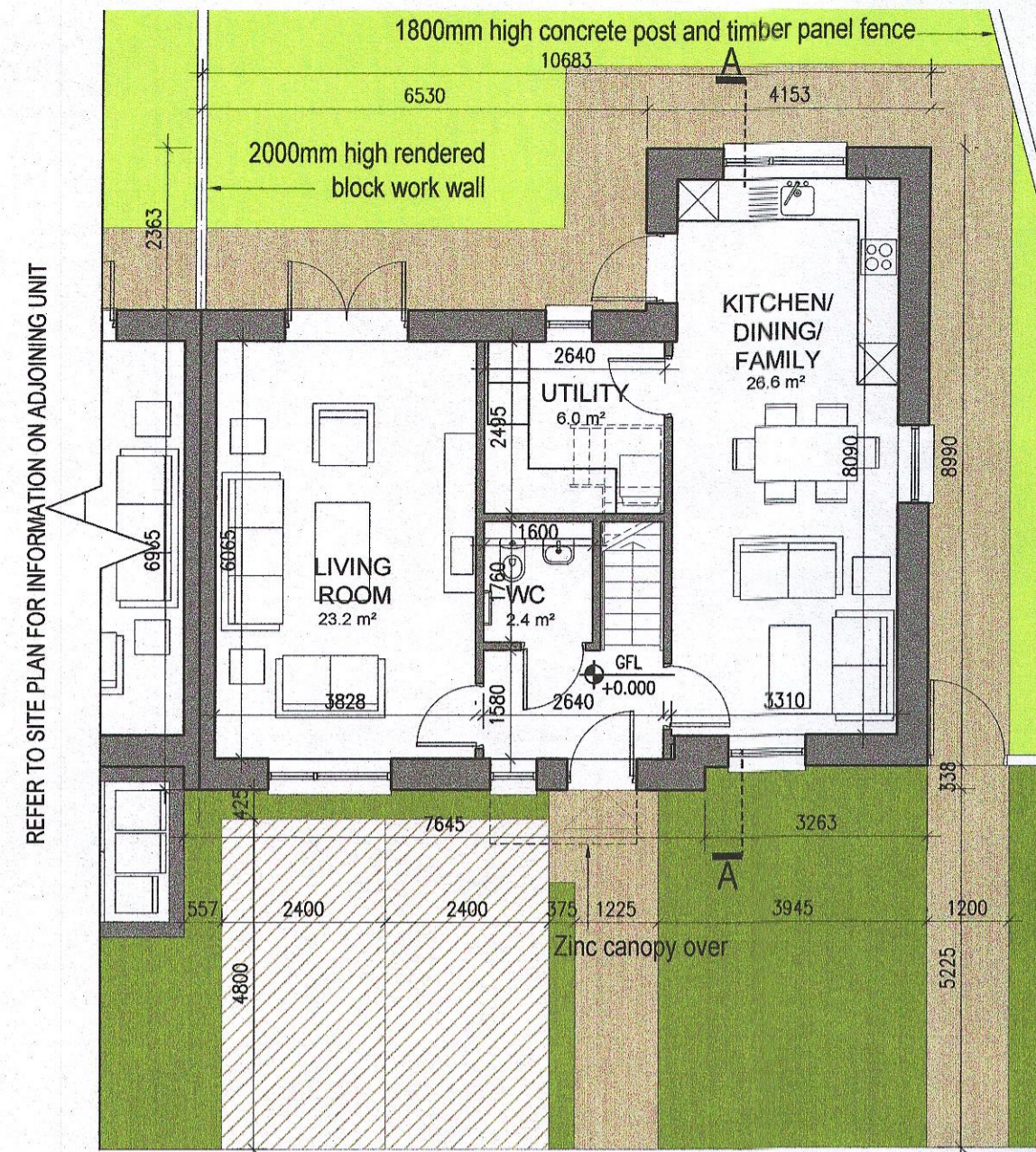
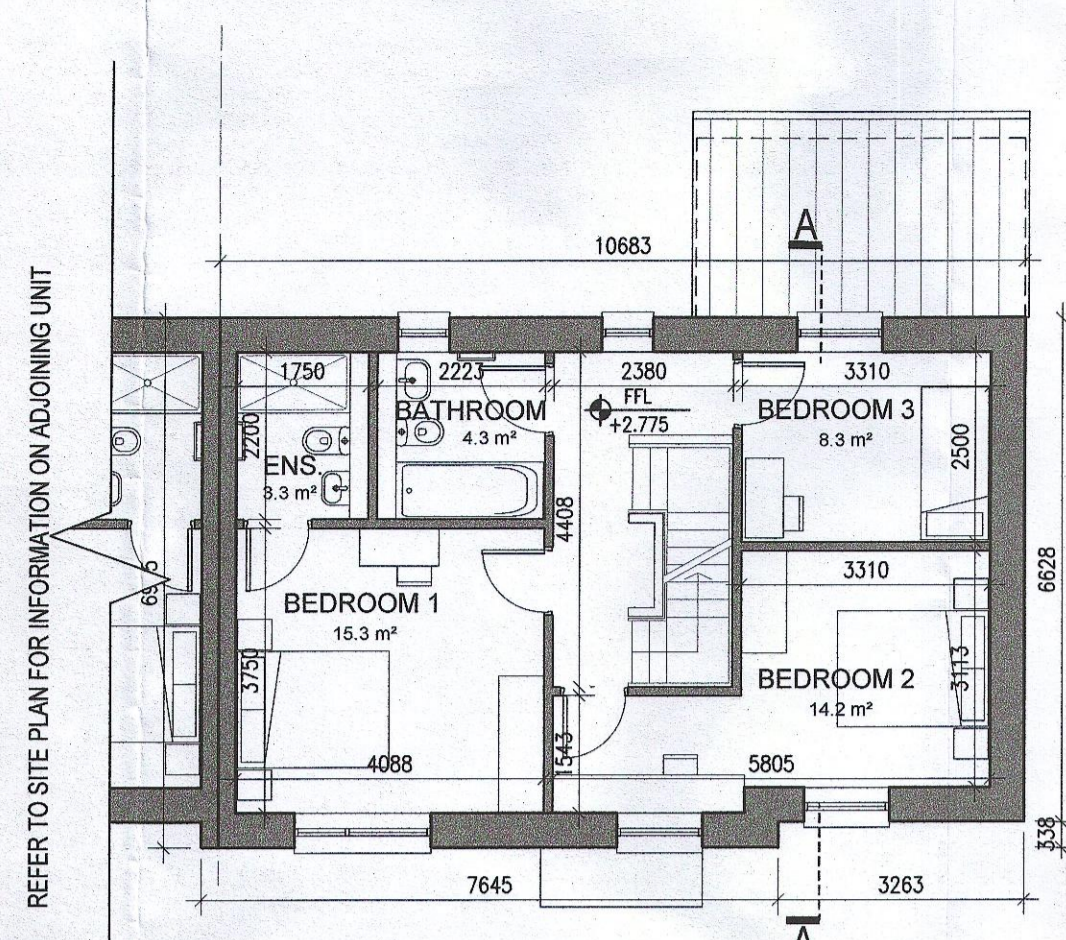


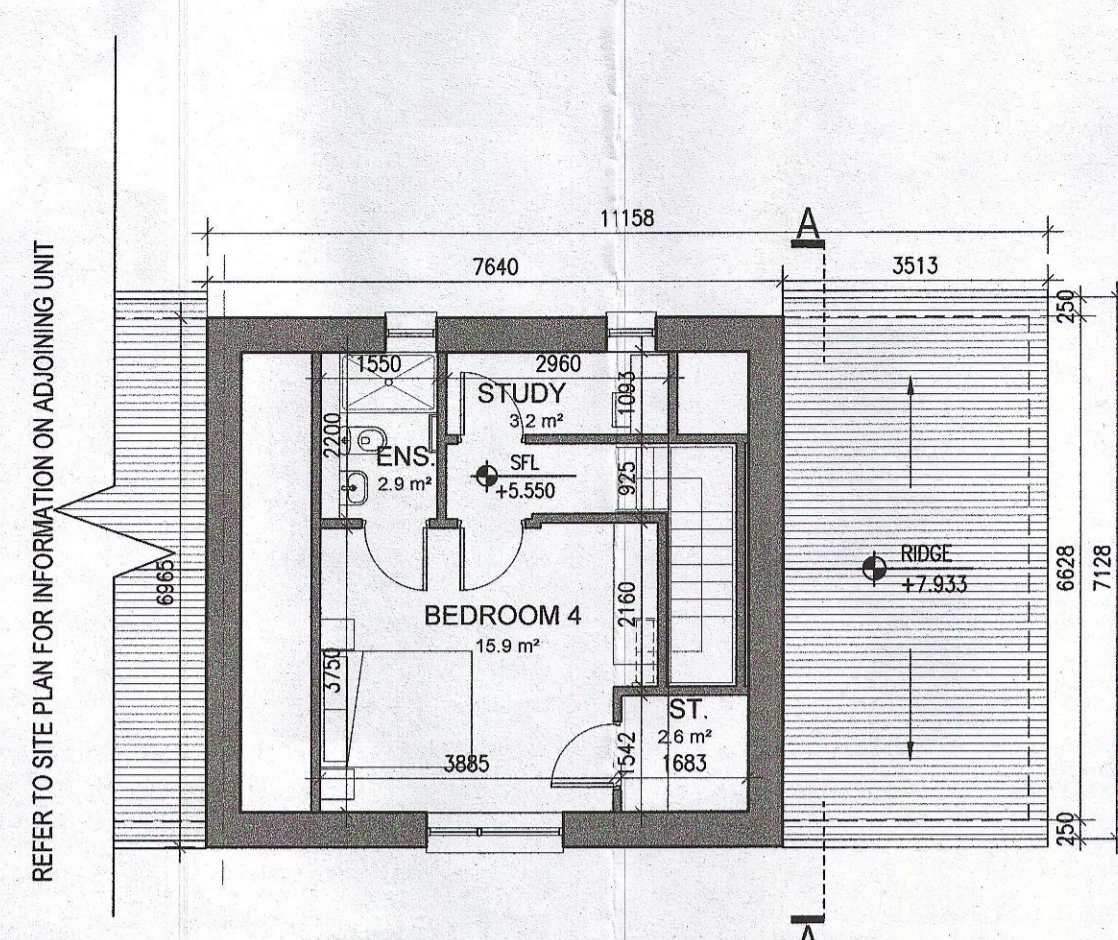
**HOUSE TYPE B2
HANDED**



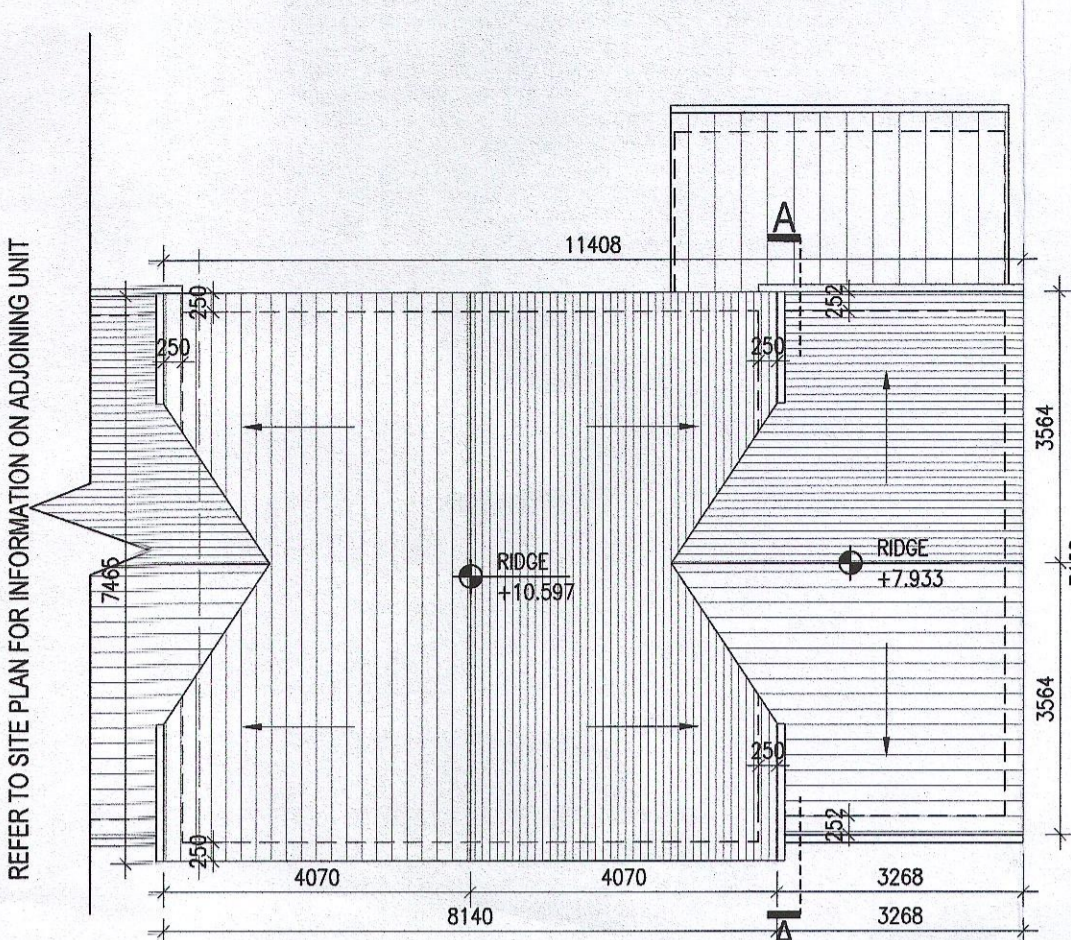
01 Ground Floor Plan



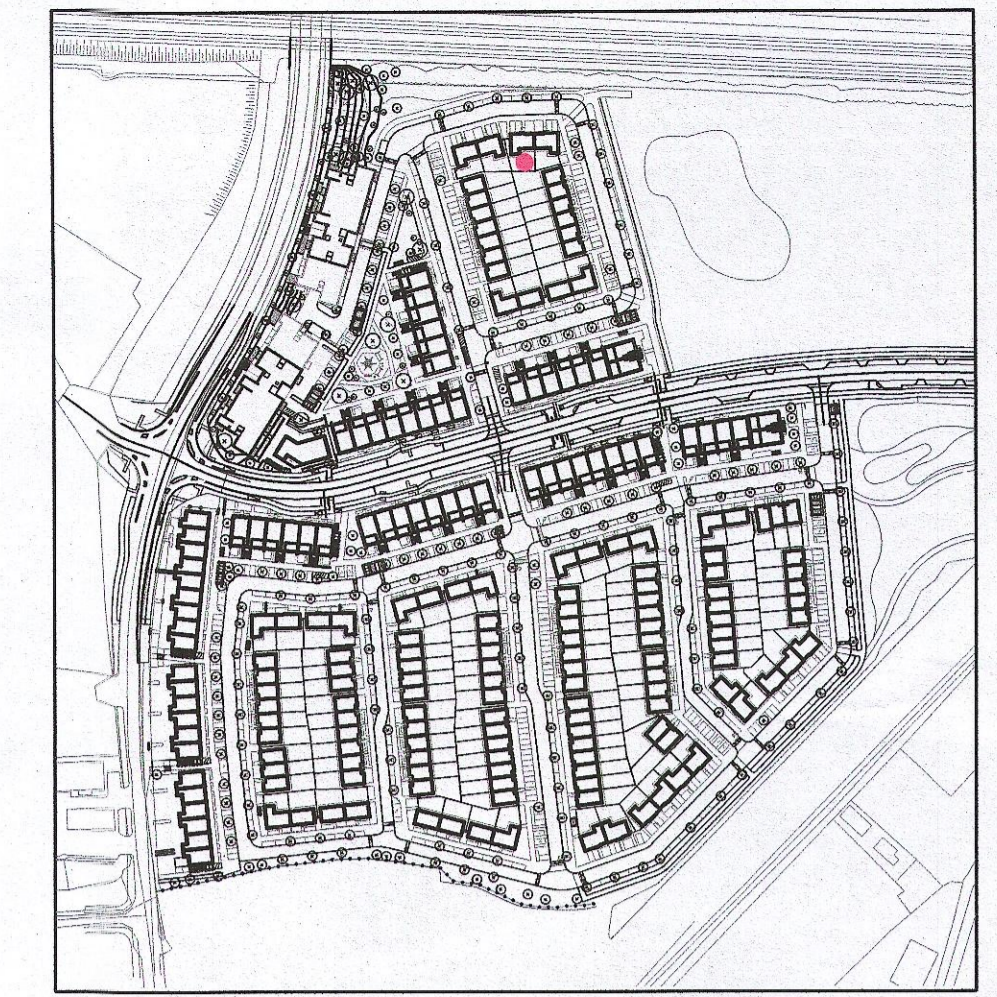
02 First Floor Plan



03 Second Floor Plan



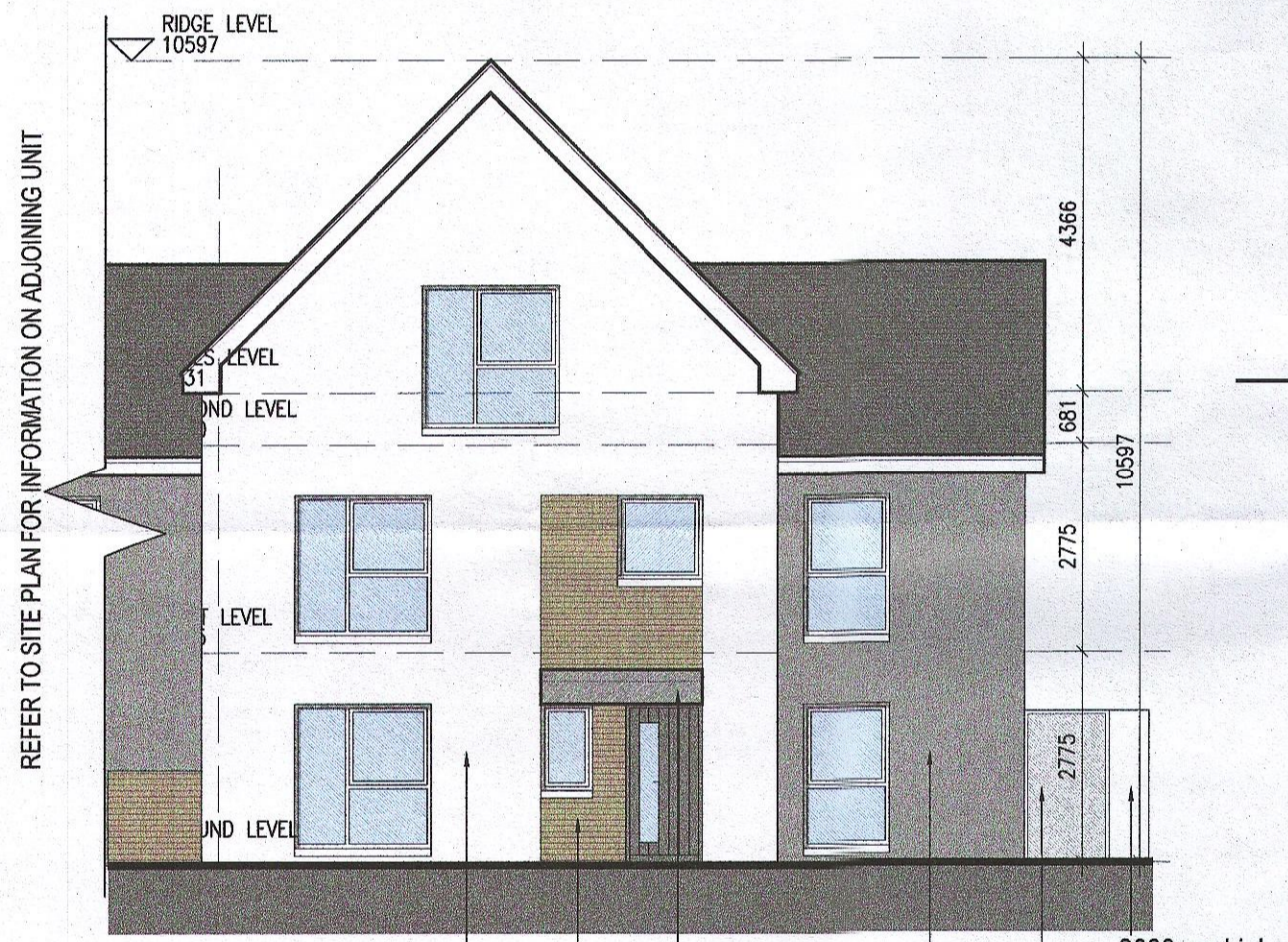
04 Roof Plan



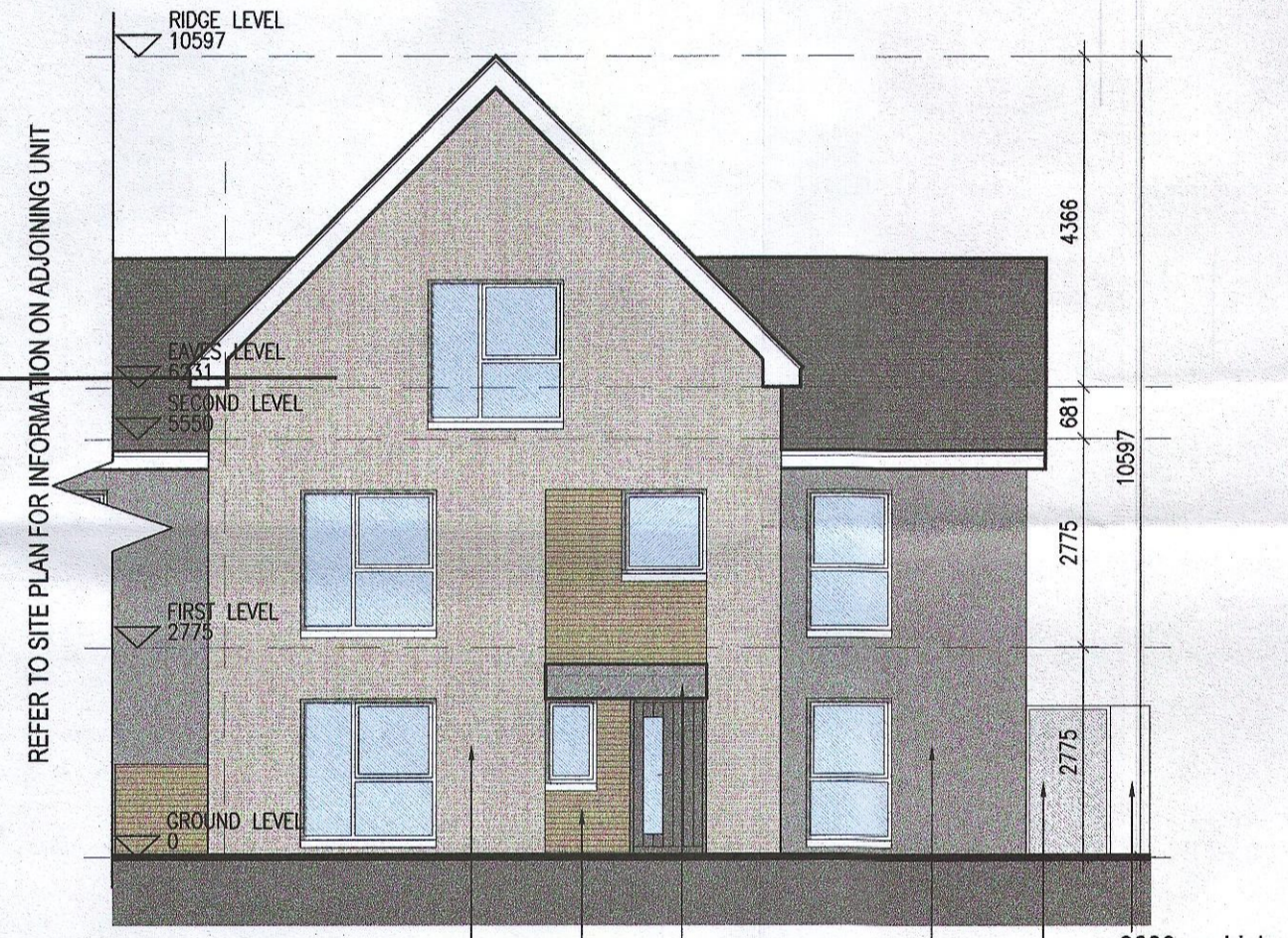
Indicates unit locations
KEY PLAN [NTS]

HOUSE TYPES	unit type	No. of beds	No. of storeys	No. of units
Yellow	Type A	- 4 bed	3 storeys	11
Blue	Type B	- 4 bed	3 storeys	15
Green	Type C	- 4 bed	2 storeys	11
Light Blue	Type D	- 3 bed	2 storeys	46
Red	Type E	- 3 bed	2 storeys	41
Light Green	Type F	- 3 bed	2 storeys	15

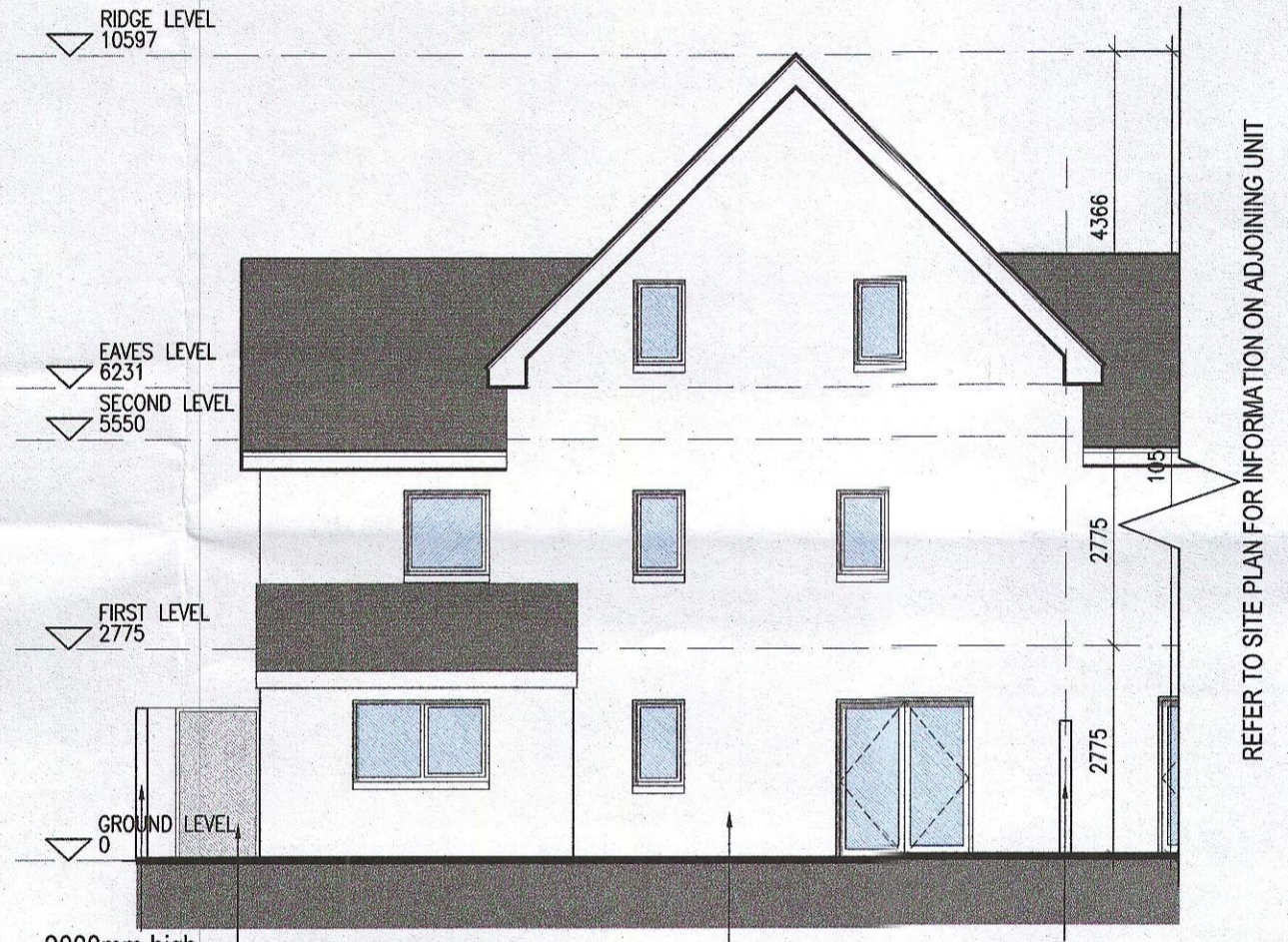
139



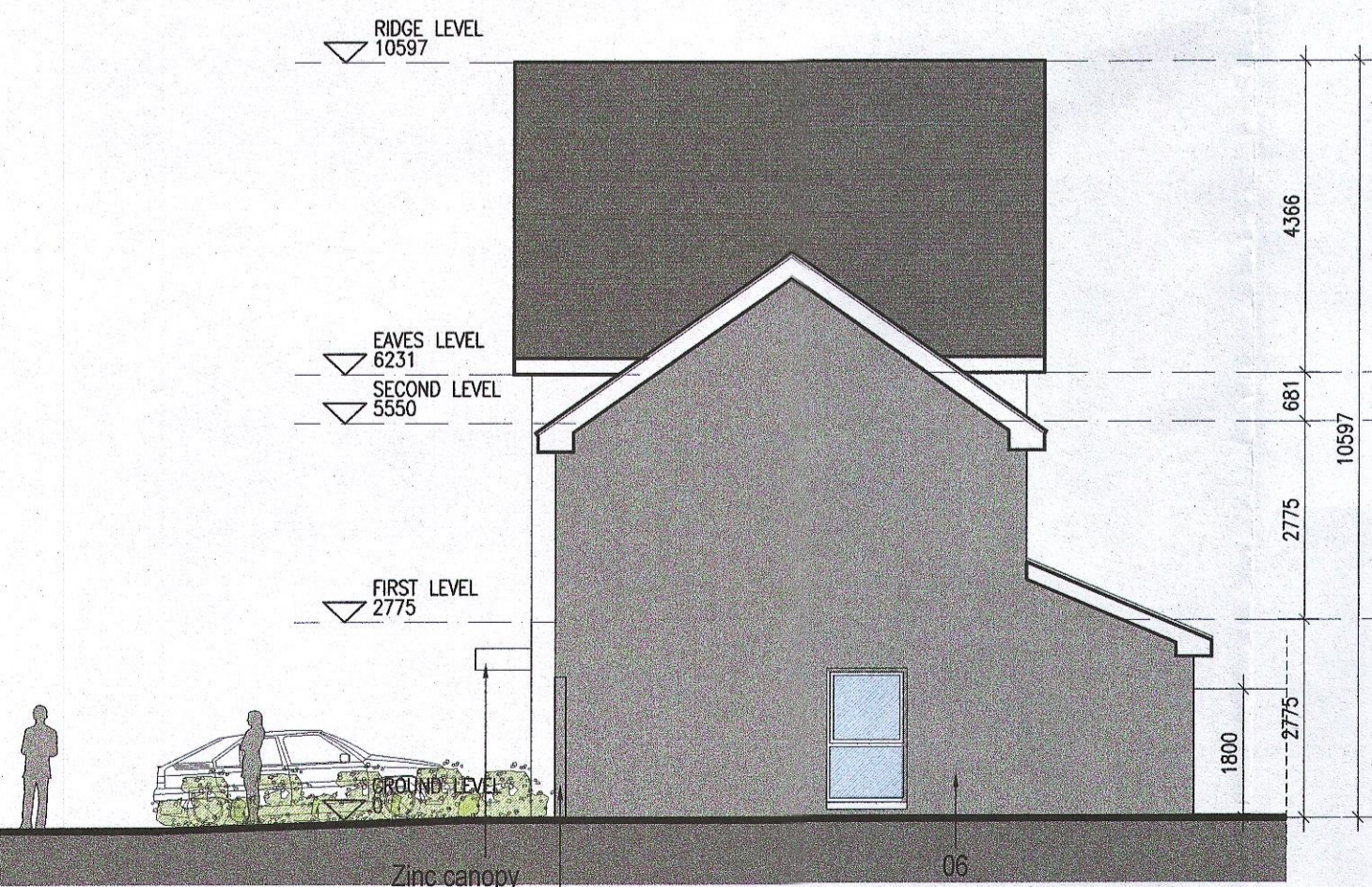
05 Front Elevation



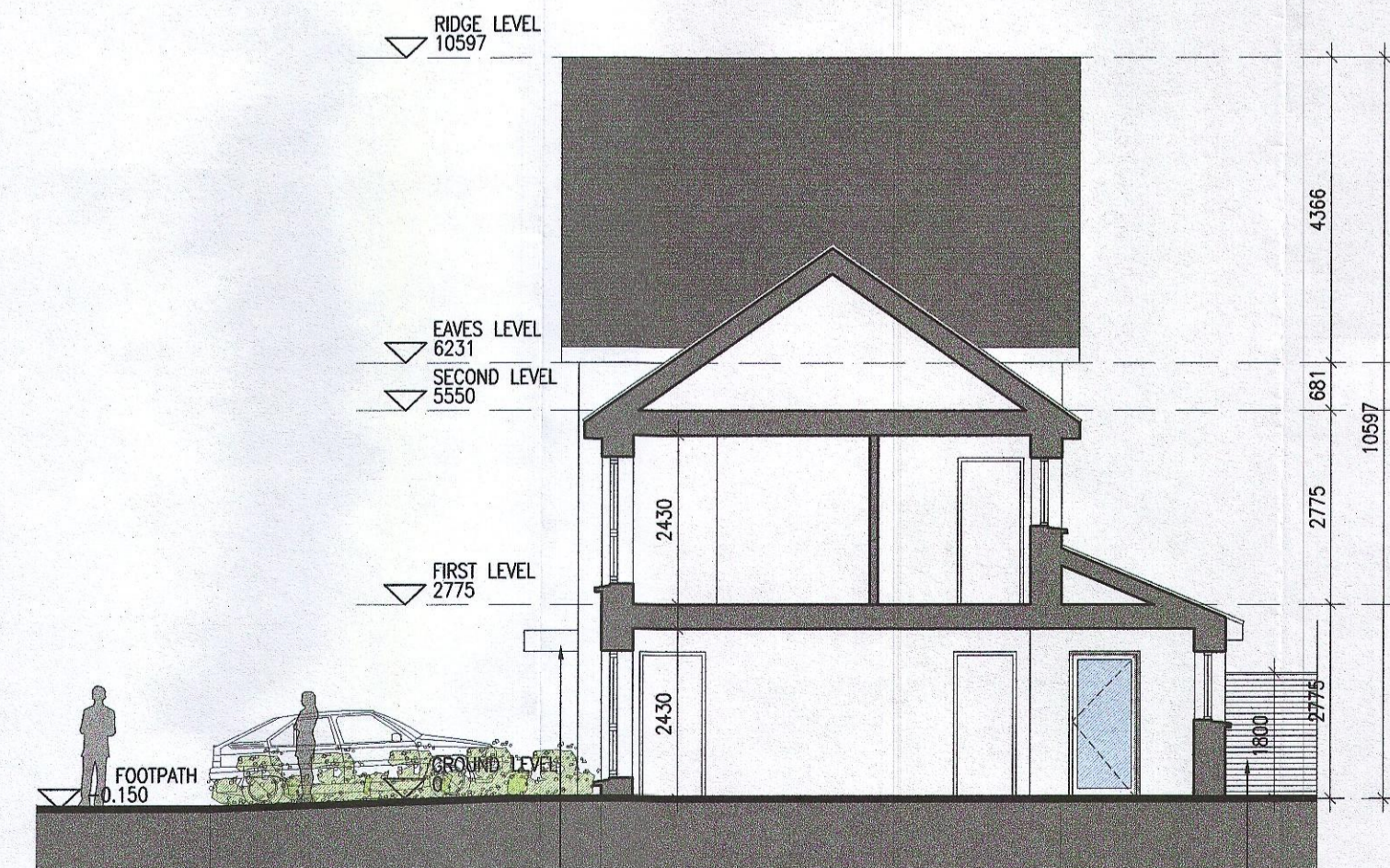
06 Front Elevation



07 Rear Elevation



08 Side Elevation



09 Section A-A

HOUSE TYPE B2
Ground floor area 67.3m²
First floor area 59.6m²
Second floor area 28.1m²
Total Floor Area (4-bed unit): 154.9m²

EXTERNAL FINISHES

WALLS: PAINTED SAND / CEMENT RENDER OR PROPRIETARY PRECOLOURED RENDER FINISH SELECTED BRICKWORK WHERE INDICATED ON DRAWINGS

WINDOWS: SELECTED PROPRIETARY DOUBLE / TRIPLE GLAZED WINDOW SYSTEM WITH FRAMES TO APPROVED COLOUR OBSCURED GLAZING TO BATHROOMS AND EN-SUITES.

DOORS: SELECTED PROPRIETARY DOORS AND GLAZED SIDE SCREENS TO APPROVED COLOUR.

RAINWATER GOODS: uPVC OR POWDER COATED METAL GUTTERS AND RAINWATER PIPES TO SELECTED COLOUR.

MAIN ROOF: CONCRETE ROOF TILES IN SELECTED COLOUR.

LOW LEVEL PROJECTION: ZINC CANOPY TO ENTRANCE OF UNITS

OTHER ITEMS: uPVC OR POWDER COATED METAL FASCIAS, SOFFITS AND BARGE BOARDS PAINTED MILDSTEEL RAILINGS AND BALUSTRADES

MATERIAL CODE LEGEND

- 01 - BUFF BRICK - STANDARD BOND - LIGHT APPROVED TONE
- 02 - BUFF BRICK - FEATURE BOND - LIGHT APPROVED TONE
- 03 - BUFF BRICK - STANDARD BOND - BROWN APPROVED TONE
- 04 - BUFF BRICK - FEATURE BOND - BROWN APPROVED TONE
- 05 - SELF COLOURED RENDER - LIGHT APPROVED TONE
- 06 - SELF COLOURED RENDER - DARK APPROVED TONE
- 07 - CONCRETE ROOF TILES - DARK APPROVED TONE
- 08 - POWDERCOATED METALWORK OR uPVC - DARK APPROVED RAL COLOUR
- 09 - POWDERCOATED METAL SCREENING - DARK APPROVED RAL COLOUR
- 10 - CLEAR GLAZING WITH DARK APPROVED RAL COLOUR FRAMING
- 11 - OPACIFIED GLAZING WITH DARK APPROVED RAL COLOUR FRAMING

REFER TO STREET ELEVATIONS FOR LOCATION OF ELEVATION TYPES

REFER TO LANDSCAPE ARCHITECT'S DRAWINGS FOR ALL LANDSCAPING DETAILS INCLUDING BOUNDARY TREATMENTS

Notes	Issue Status	No.	Date	Revision	Initials
1. Copyright Reserved	Progress				
2. Work to agreed dimensions only. Do not scale drawing	Planning Application				
3. The contractor is responsible for checking all levels and dimensions on site and shall refer all discrepancies to the Architect	Fire Cert				
4. Where appropriate, for details of r.c. structure, or mechanical and electrical details, see Engineers Drawings	Disability Cert				
5. Proprietary items shall be fixed in strict accordance with manufacturers instructions.	Tender				
6. Sizes of proprietary items shall be checked with manufacturer.	Construction				
7. The contractor shall be responsible for the coordination of structure, finishes and services.	As Built				
	Information Only				

Project	Adamstown Extension - Clonburris SDZ Residential Development	6-7 HARCOURT TERRACE, DUBLIN 2, IRELAND t+353-1-618 2400 f+353-1-678 7286 www.bkd.ie
Drawing Title	House Type B2_End_Handed_Plans, Elevations and Section	
Drawing No	6268-P-107	
Scale	1:100 @ A1	
Rev	01	
Drawn	IFJ	
Date	Jan'23	

