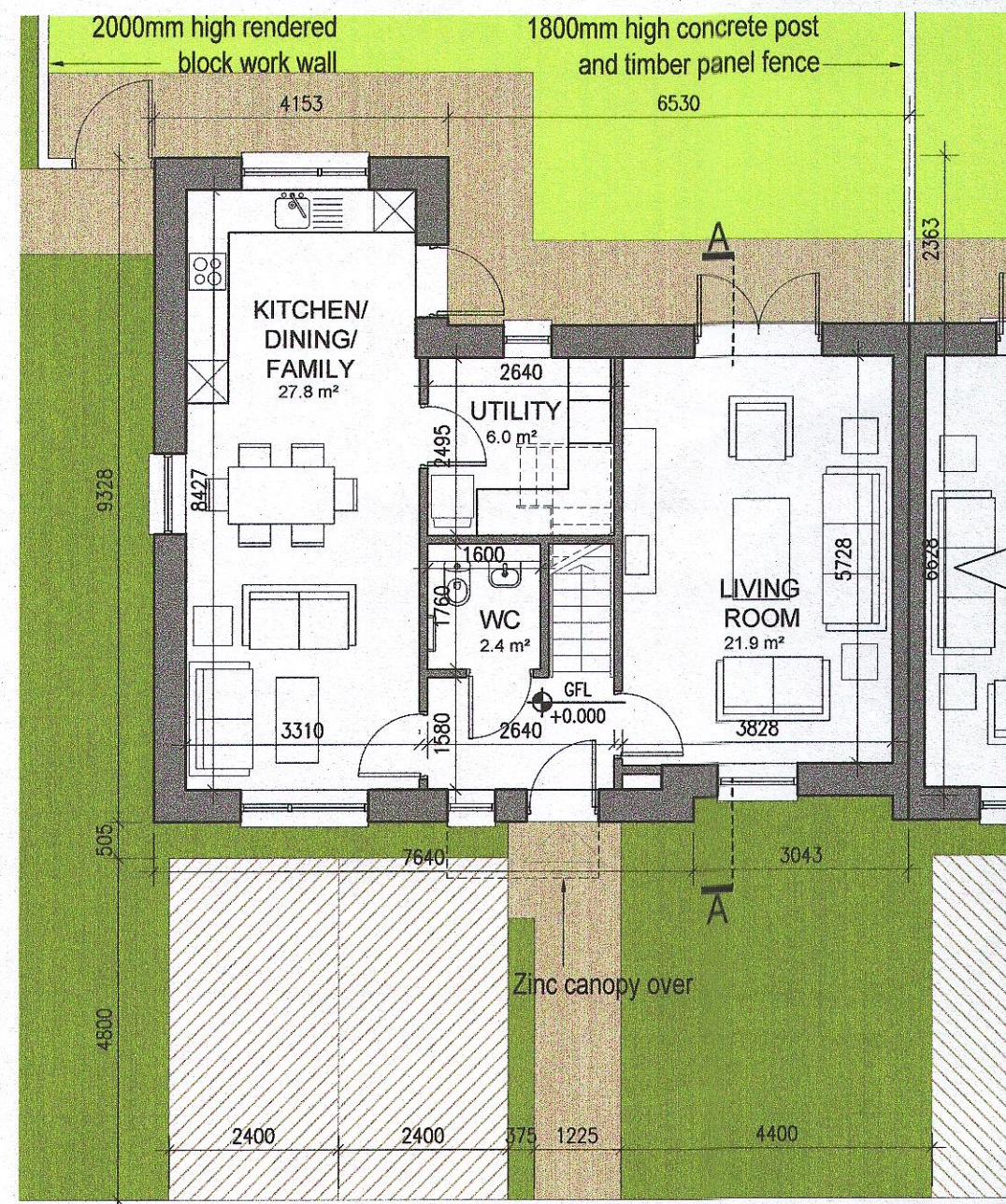
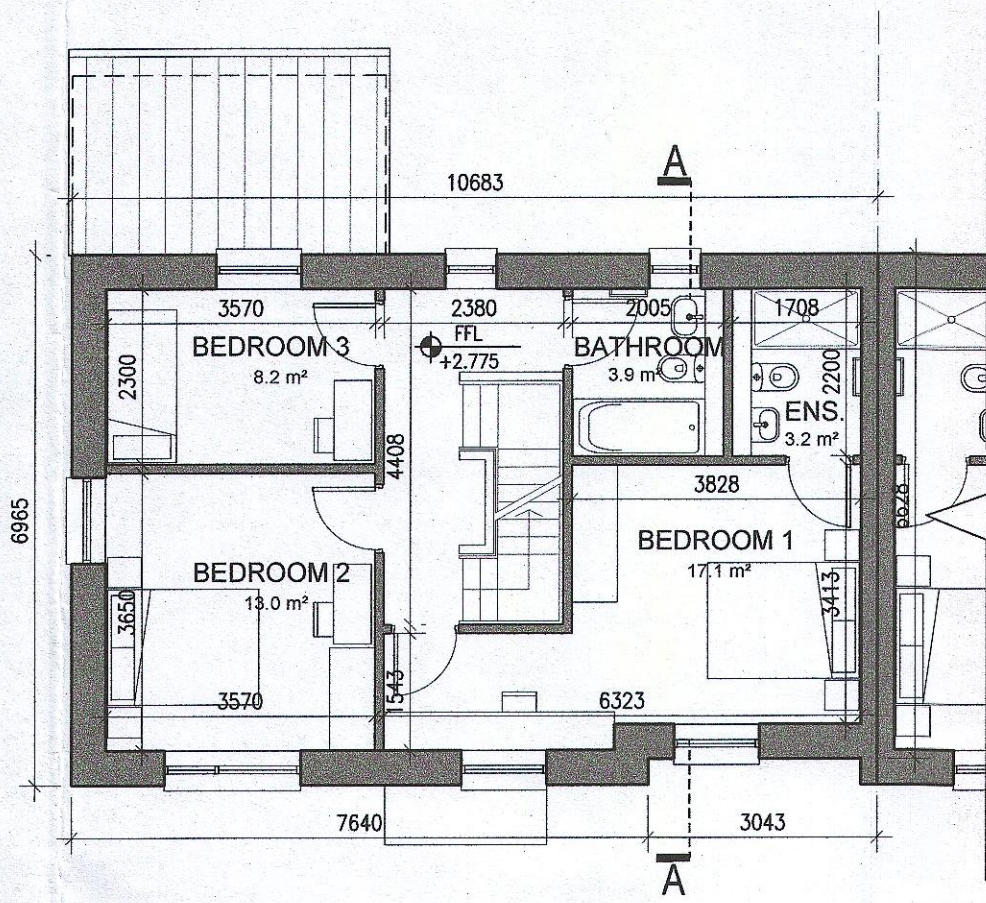


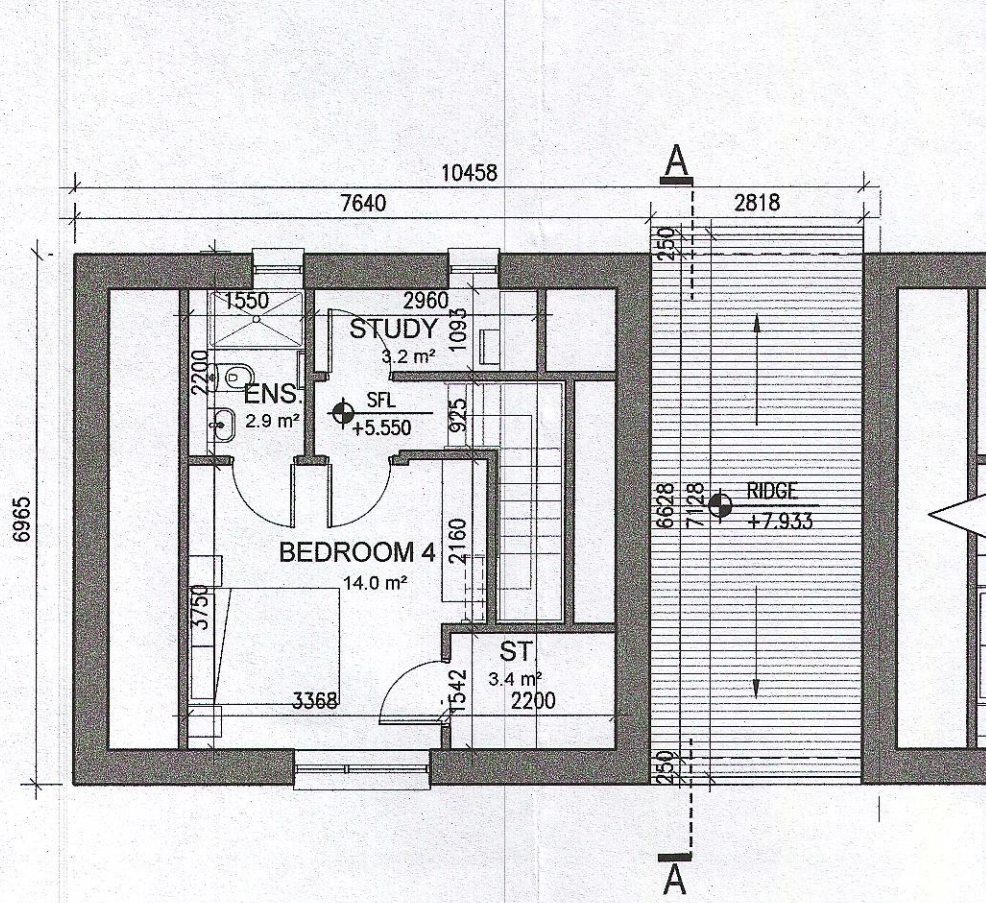
**HOUSE TYPE B1
HANDED**



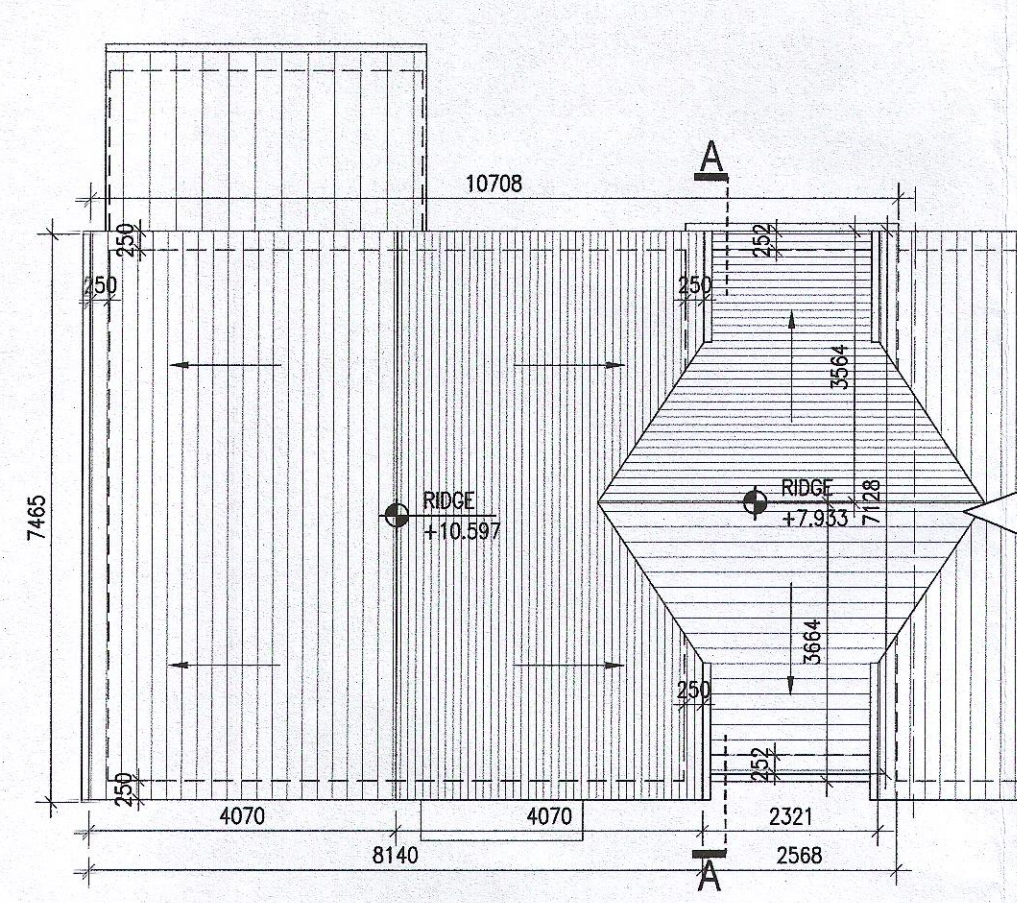
01 Ground Floor Plan



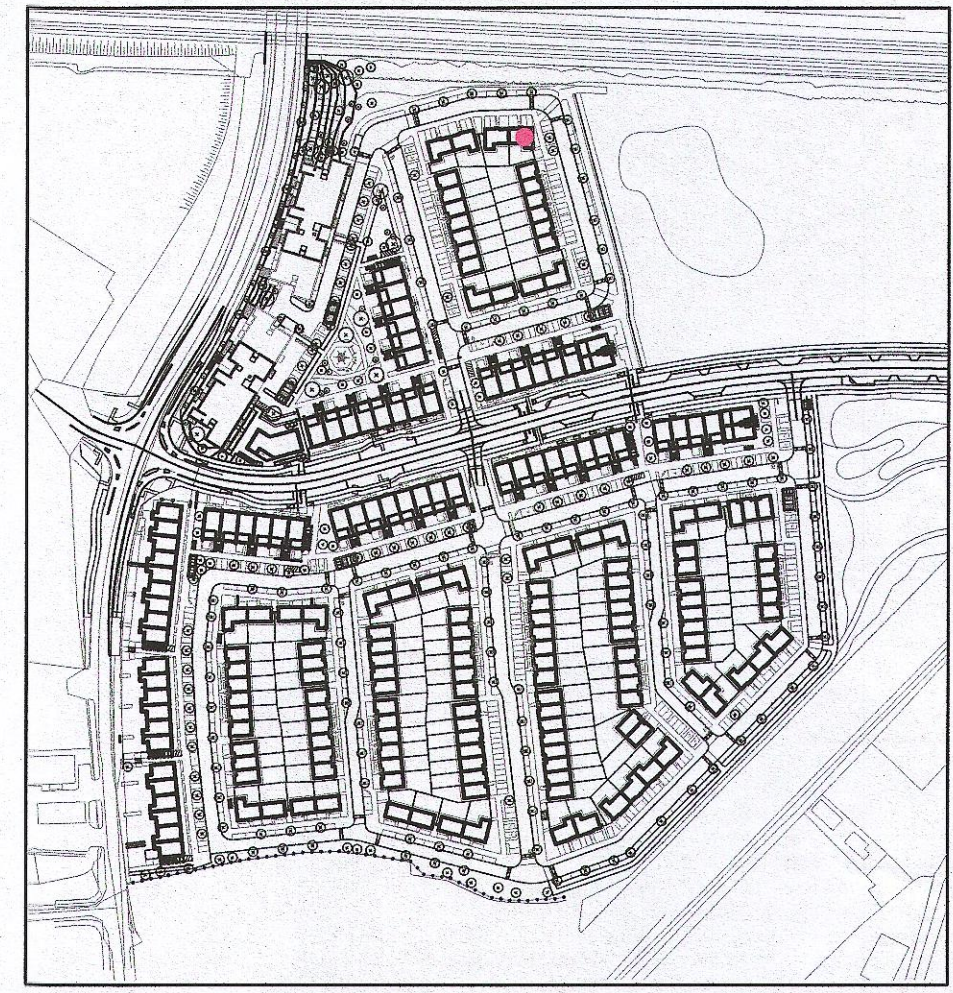
02 First Floor Plan



03 Second Floor Plan



04 Roof Plan
1:100@A1



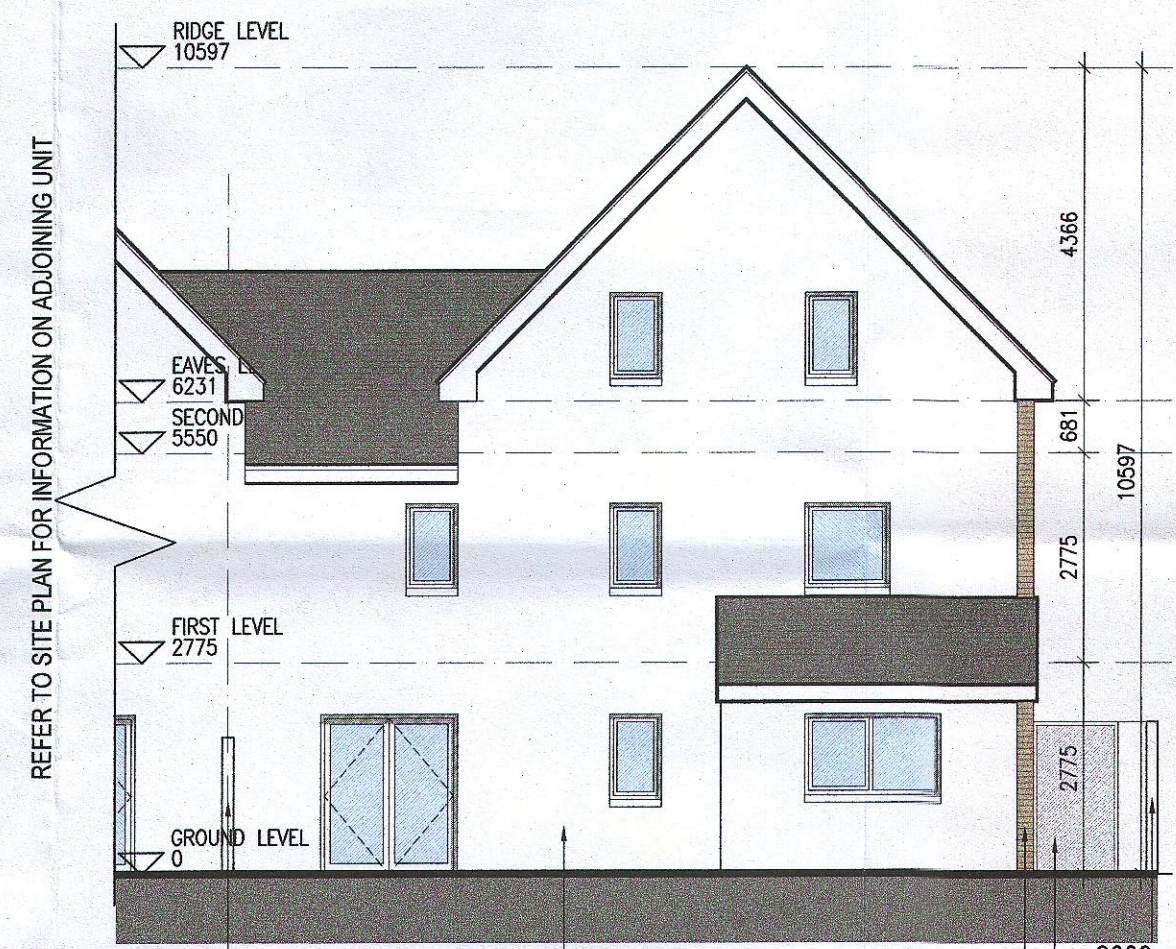
Indicates unit locations
KEY PLAN [NTS]

HOUSE TYPES	unit type	No. of beds	No. of storeys	No. of units
Type A	- 4 bed	3 storeys	11	
Type B	- 4 bed	3 storeys	15	
Type C	- 4 bed	2 storeys	11	
Type D	- 3 bed	2 storeys	46	
Type E	- 3 bed	2 storeys	41	
Type F	- 3 bed	2 storeys	15	

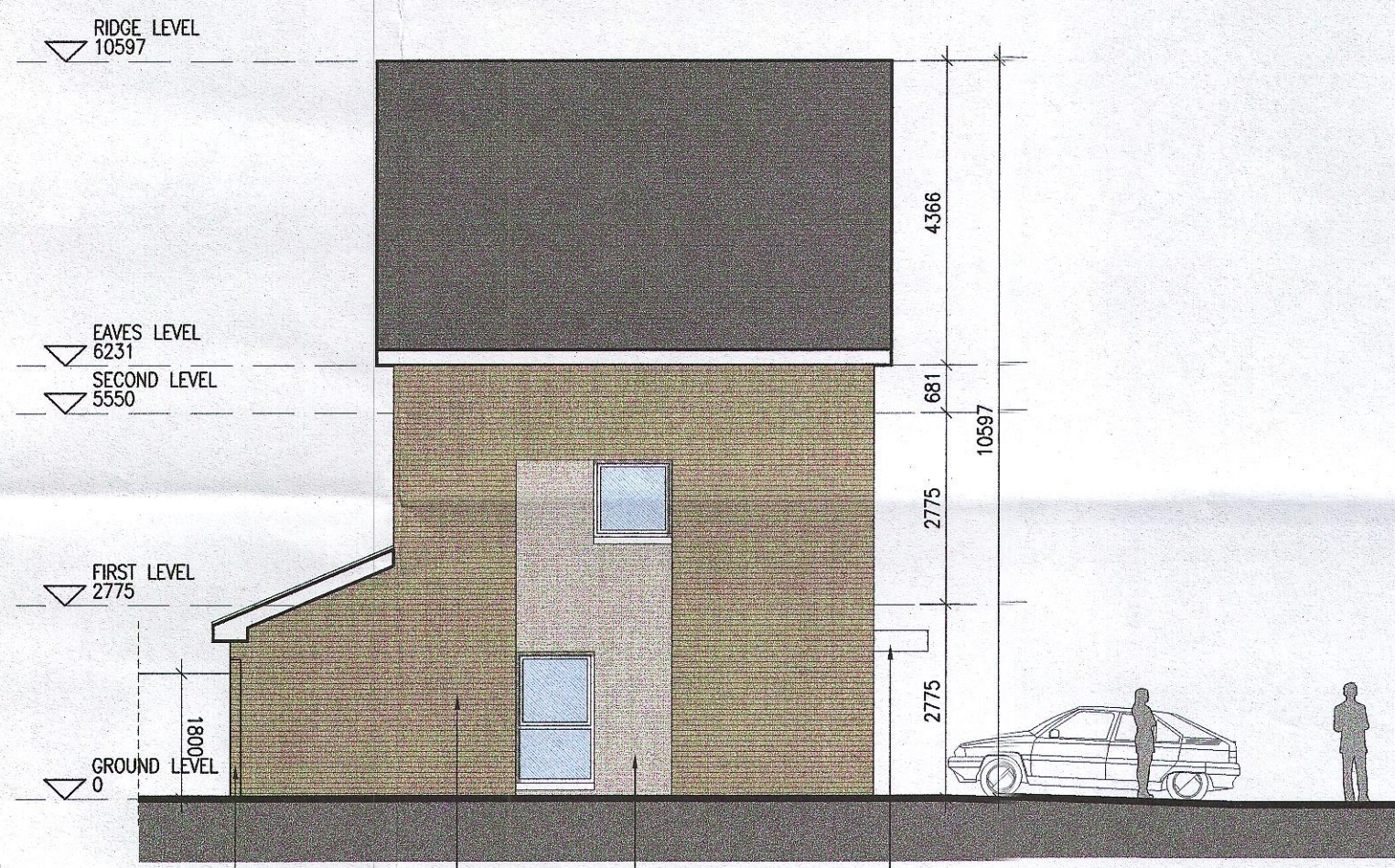
139



05 Front Elevation
1:100@A1



06 Rear Elevation
1:100@A1



06 Side Elevation
1:100@A1

EXTERNAL FINISHES

WALLS: PAINTED SAND / CEMENT RENDER OR PROPRIETARY PRECOLOURED RENDER FINISH SELECTED BRICKWORK WHERE INDICATED ON DRAWINGS

WINDOWS: SELECTED PROPRIETARY DOUBLE / TRIPLE GLAZED WINDOW SYSTEM WITH FRAMES TO APPROVED COLOUR OBSCURED GLAZING TO BATHROOMS AND EN-SUITES.

DOORS: SELECTED PROPRIETARY DOORS AND GLAZED SIDE SCREENS TO APPROVED COLOUR.

RAINWATER GOODS: uPVC OR POWDER COATED METAL GUTTERS AND RAINWATER PIPES TO SELECTED COLOUR.

MAIN ROOF: CONCRETE ROOF TILES IN SELECTED COLOUR.

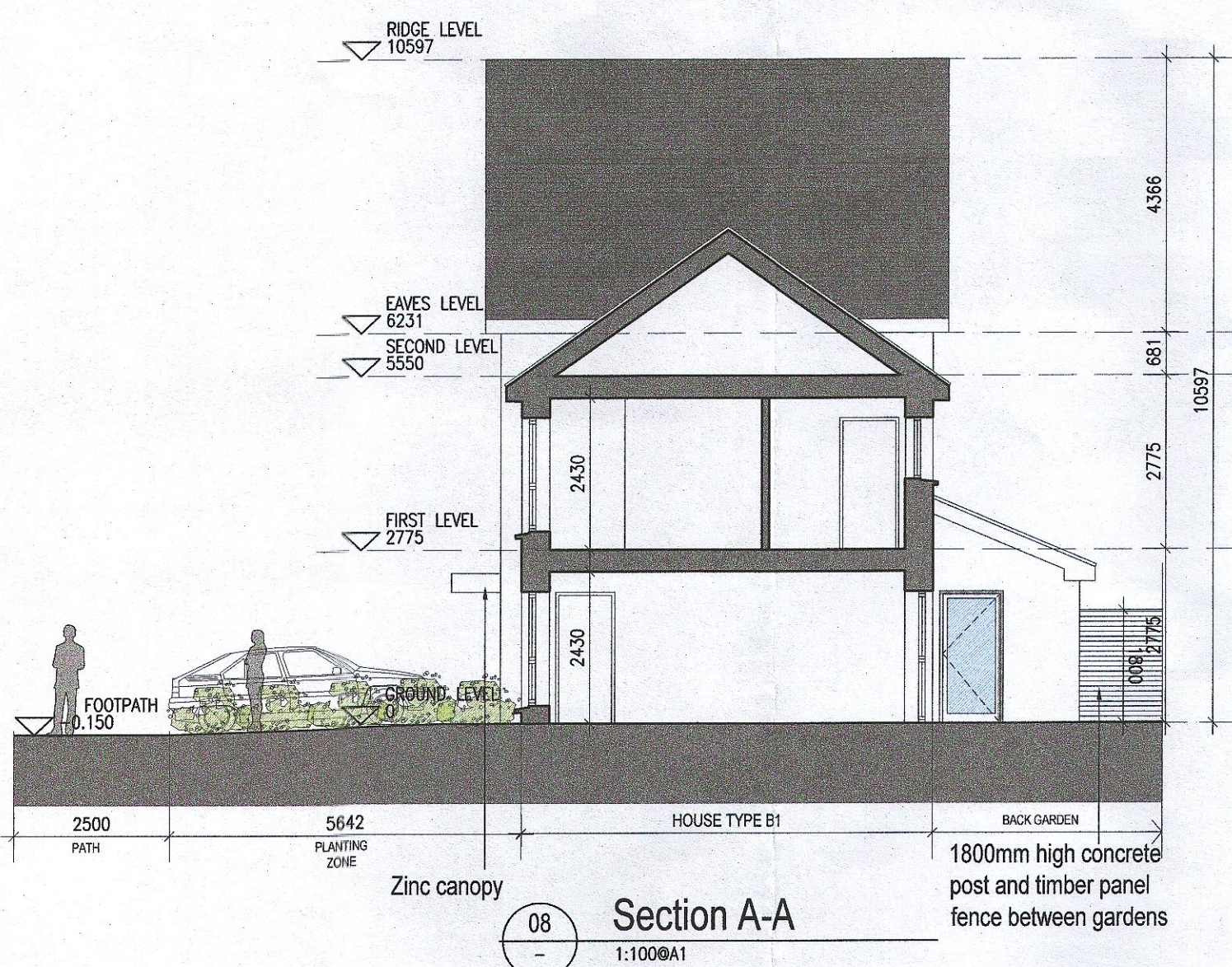
LOW LEVEL PROJECTION: ZINC CANOPY TO ENTRANCE OF UNITS

OTHER ITEMS: uPVC OR POWDER COATED METAL FASCIAS, SOFFITS AND BARGE BOARDS PAINTED MILDSTEEL RAILINGS AND BALUSTRADES

MATERIAL CODE LEGEND

01	– BUFF BRICK – STANDARD BOND – LIGHT APPROVED TONE
02	– BUFF BRICK – FEATURE BOND – LIGHT APPROVED TONE
03	– BUFF BRICK – STANDARD BOND – BROWN APPROVED TONE
04	– BUFF BRICK – FEATURE BOND – BROWN APPROVED TONE
05	– SELF COLOURED RENDER – LIGHT APPROVED TONE
06	– SELF COLOURED RENDER – DARK APPROVED TONE
07	– CONCRETE ROOF TILES – DARK APPROVED TONE
08	– POWDERCOATED METALWORK OR uPVC – DARK APPROVED RAL COLOUR
09	– POWDERCOATED METAL SCREENING – DARK APPROVED RAL COLOUR
10	– CLEAR GLAZING WITH DARK APPROVED RAL COLOUR FRAMING
11	– OPACIFIED GLAZING WITH DARK APPROVED RAL COLOUR FRAMING

HOUSE TYPE B1
Ground floor area 67.3m²
First floor area 59.6m²
Second floor area 28.1m²
Total Floor Area (4-bed unit): 154.9m²



08 Section A-A
1:100@A1

REFER TO STREET ELEVATIONS FOR LOCATION OF ELEVATION TYPES

REFER TO LANDSCAPE ARCHITECT'S DRAWINGS FOR ALL LANDSCAPING DETAILS INCLUDING BOUNDARY TREATMENTS

- Notes**
- Copyright Reserved
 - Work to figured dimensions only. Do not scale drawing
 - The contractor is responsible for checking all levels and dimensions on site and shall refer all discrepancies to the Architect
 - Where appropriate, for details of c.c. structure, or mechanical and electrical details, see Engineers drawings
 - Proprietary items shall be fixed in strict accordance with manufacturers instructions.
 - Size of proprietary items shall be checked with manufacturer.
 - The contractor shall be responsible for the coordination of structure, finishes and services.

Issue Status	Progress
Planning Application	■
Fire Cert	
Disability Cert	
Tender	
Construction	
As Built	
Information Only	

No.	Date	Revision	Initials
01	27/01/23	Planning Application	IFJ

Project: **Adamstown Extension - Clonburris SDZ Residential Development**

6 - 7 HARCOURT TERRACE, DUBLIN 2, IRELAND
T: +353-1-918 2400 F: +353-1-918 7305
e: architecture@bkd.ie www.bkd.ie

Drawing Title: House Type B1_End_Handed_Plans, Elevations and Section

Drawing No: 6268-P-105

Scale: 1:100 @ A1 Rev: 01 Drawn: IFJ Date: Jan 23

bkdarchitects
BURKE-KENNEDY DOYLE