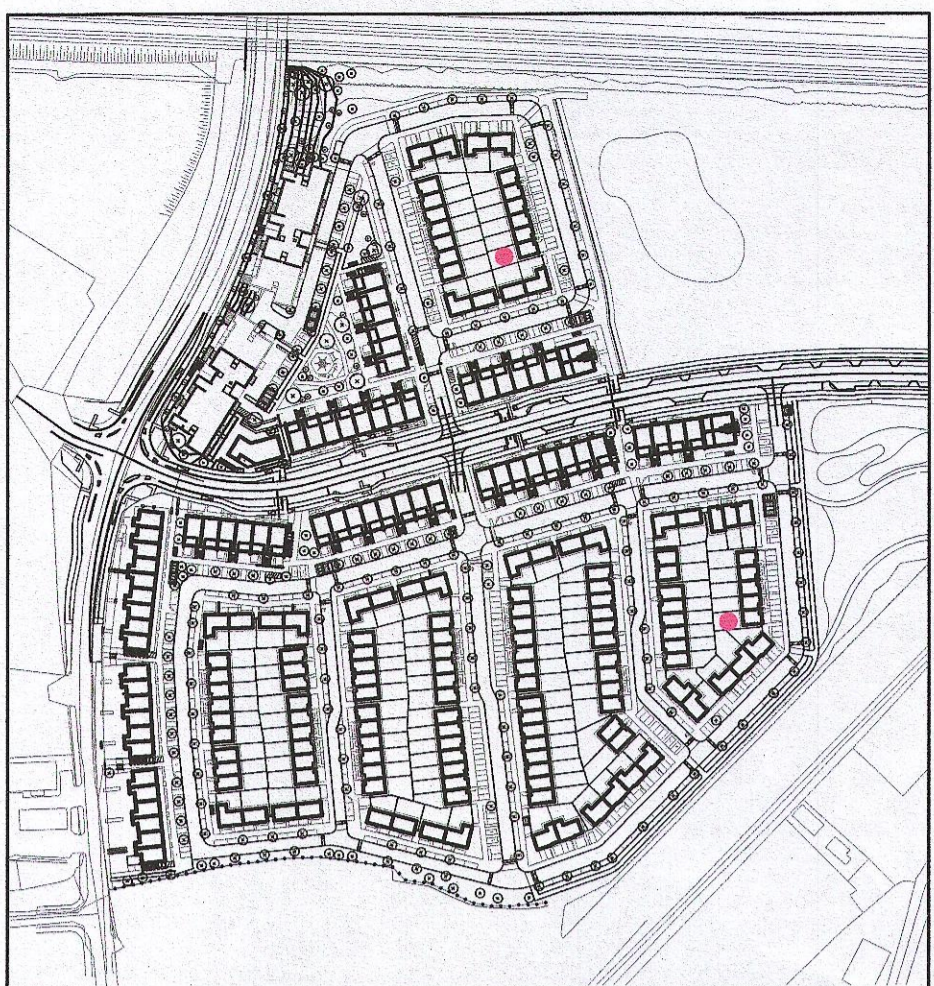
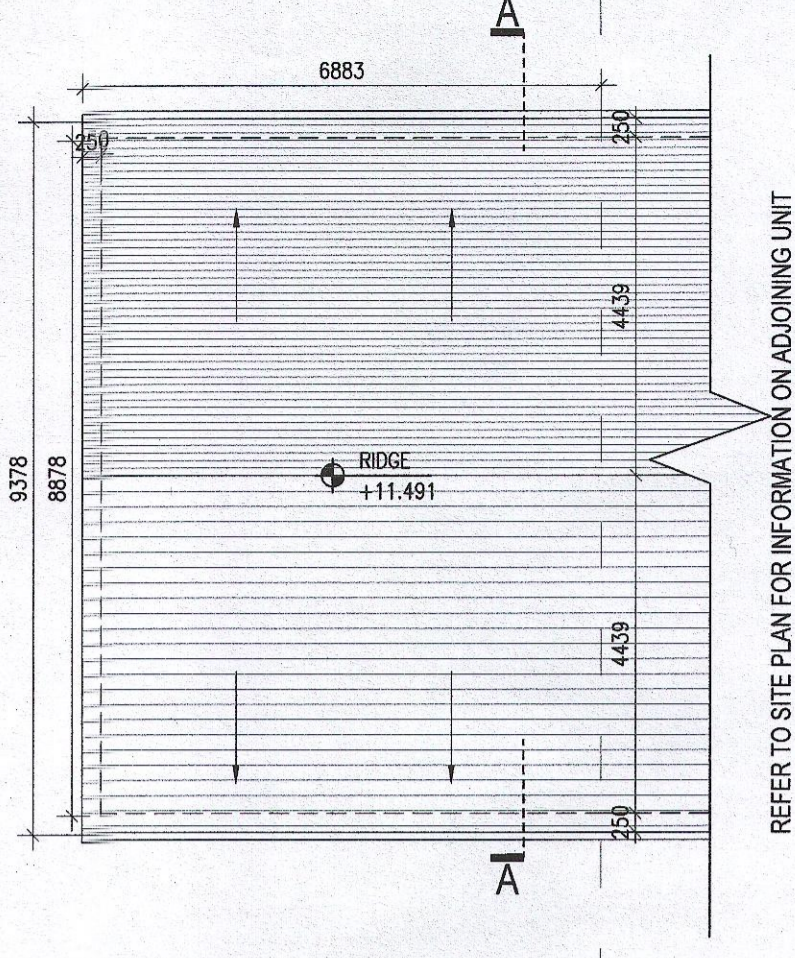
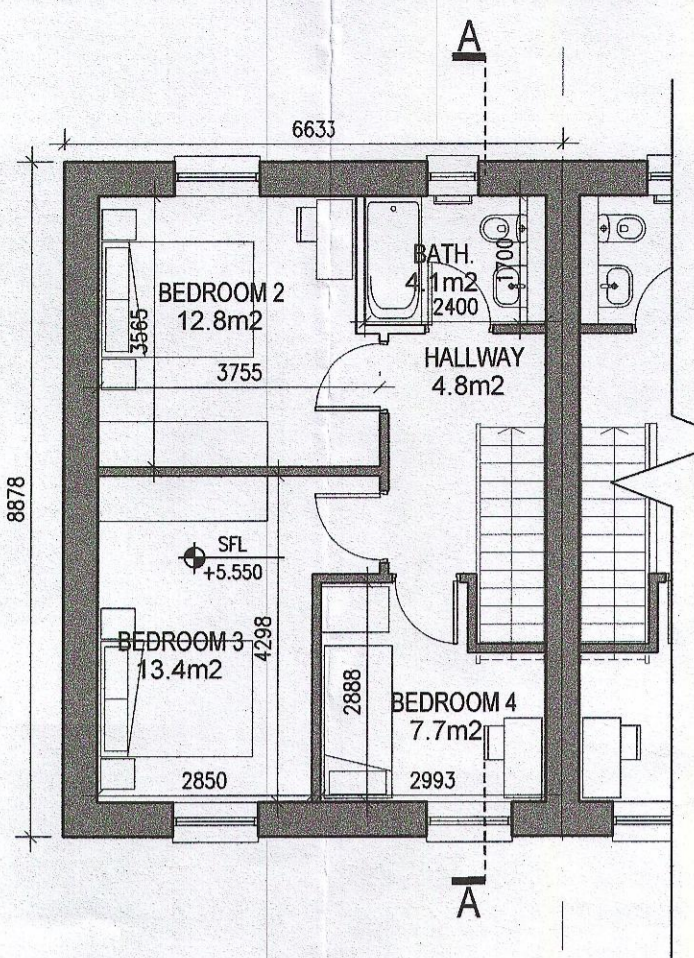
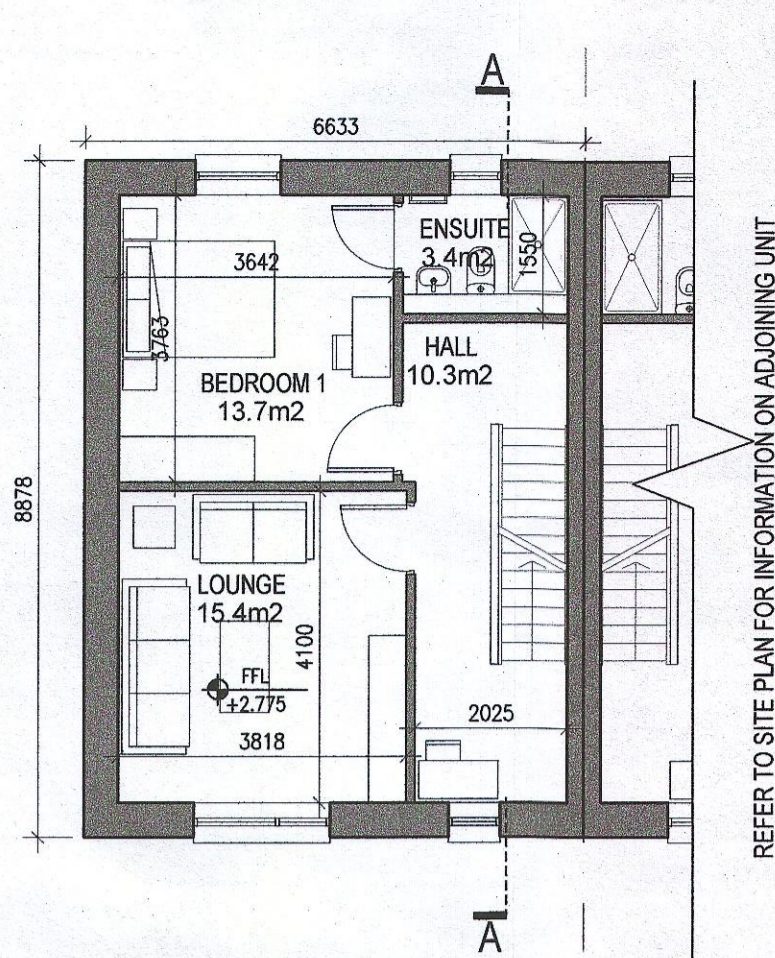
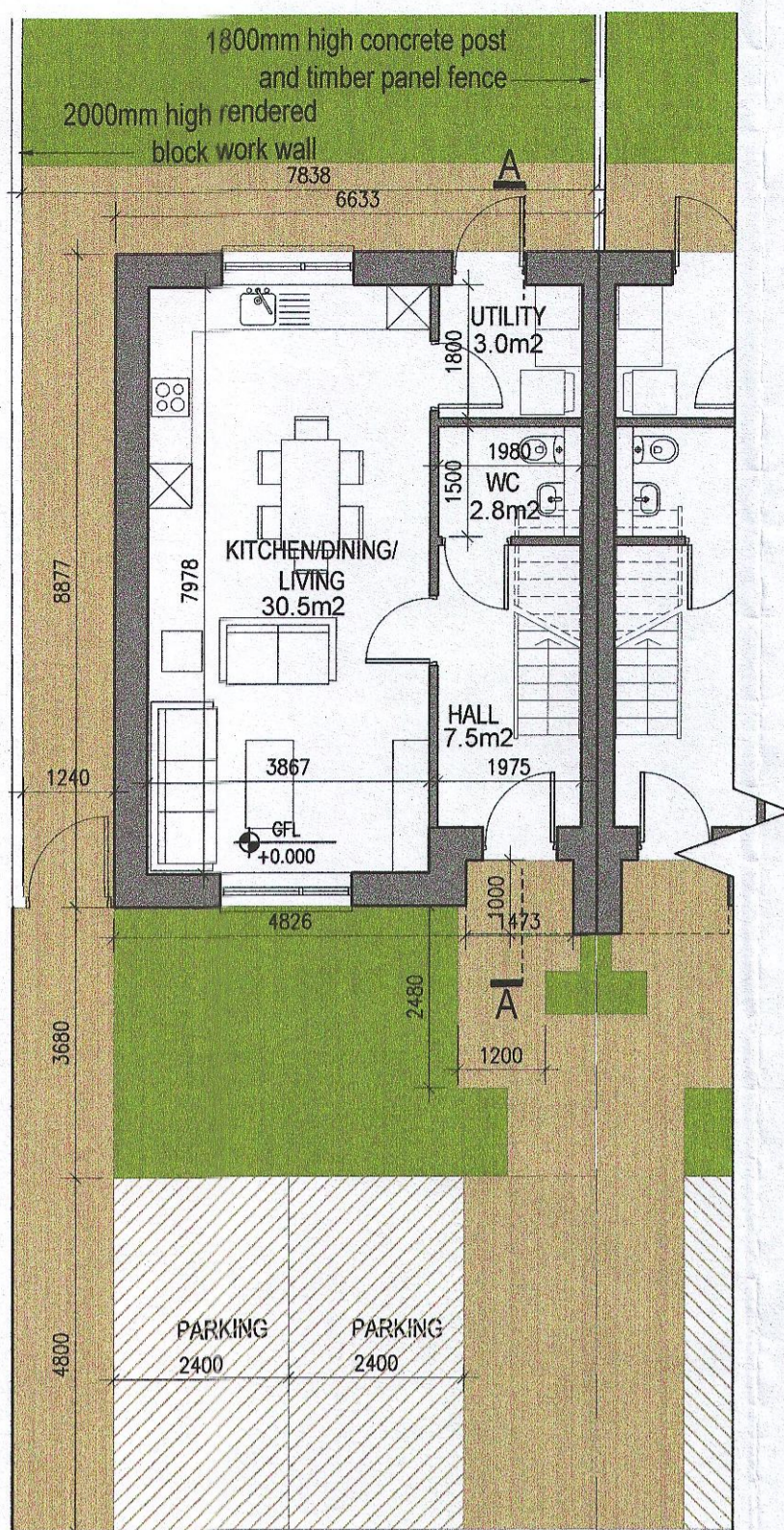


**HOUSE TYPE A2
NON-HANDED**



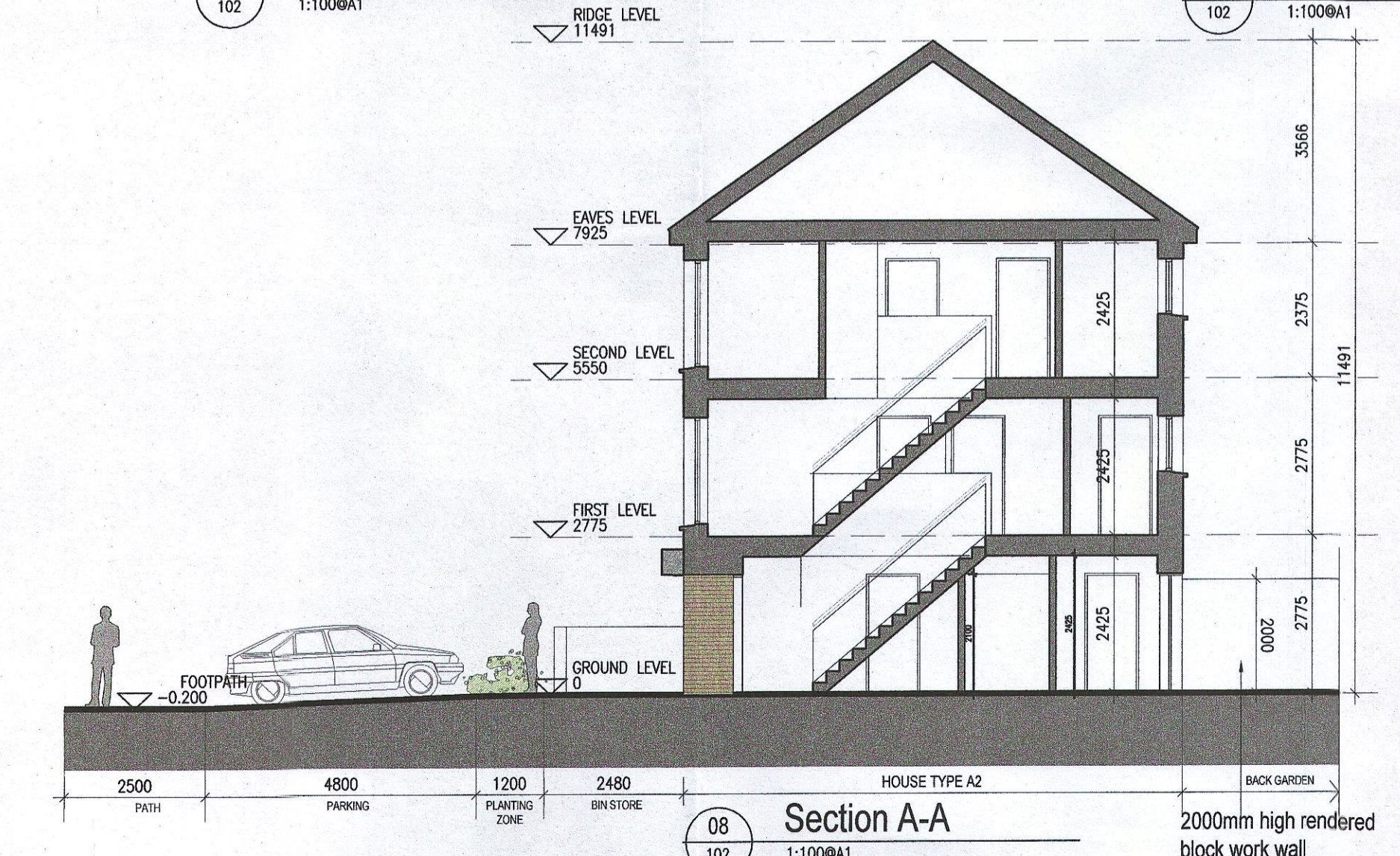
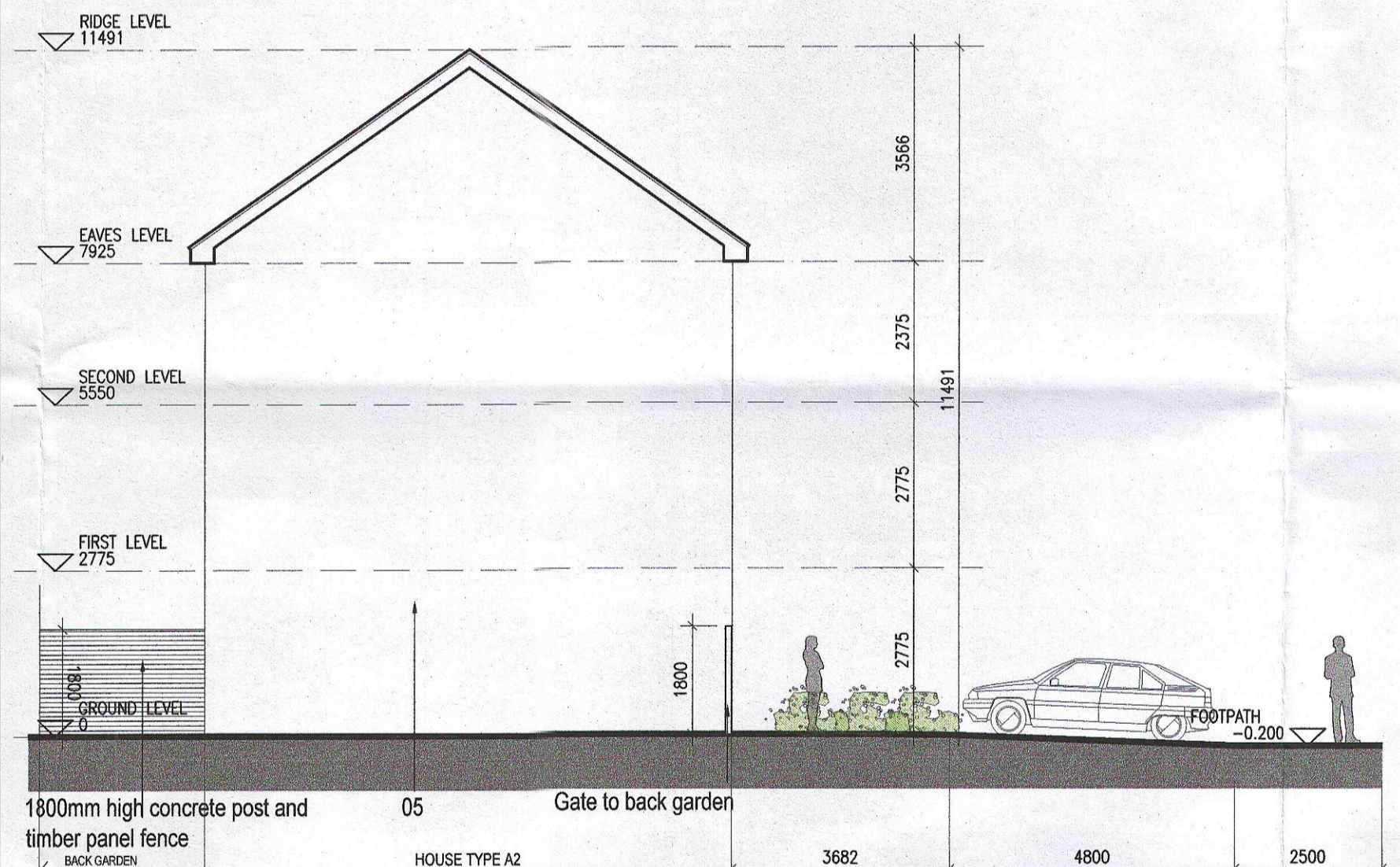
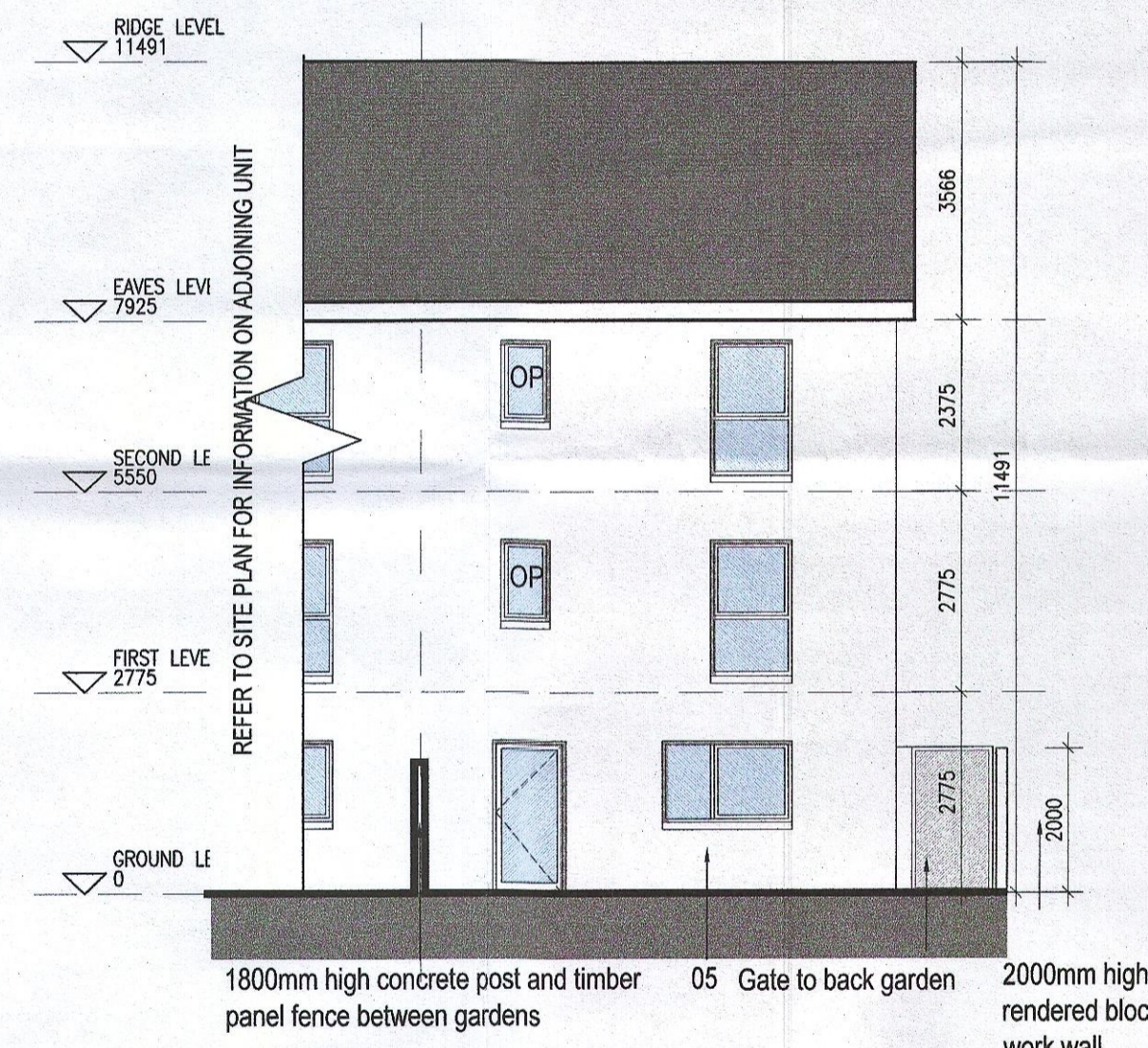
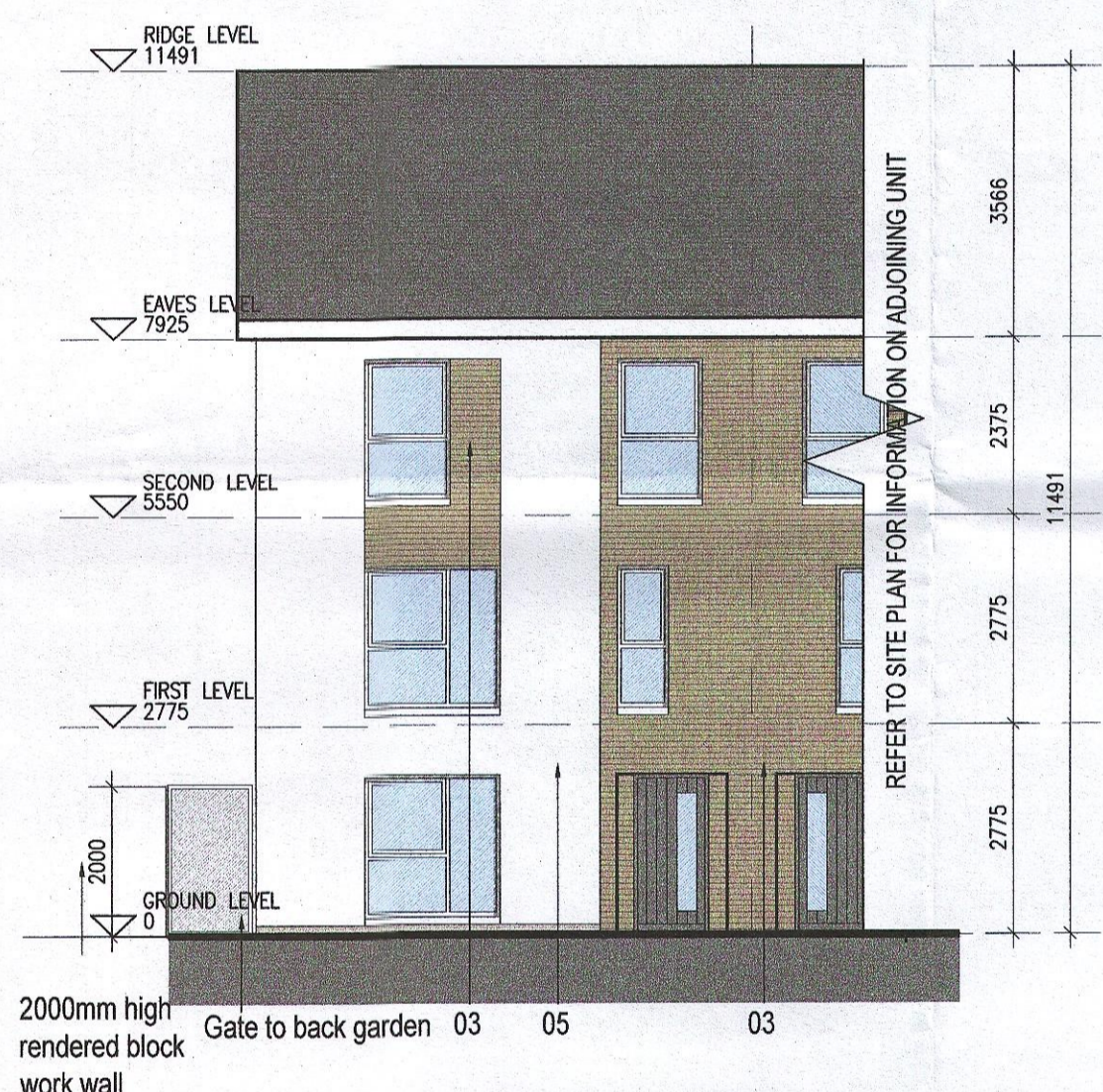
Indicates unit locations

HOUSE TYPES	unit type	No. of beds	No. of storeys	No. of units
Type A	- 4 bed	3 storeys	11	
Type B	- 4 bed	3 storeys	15	
Type C	- 4 bed	2 storeys	11	
Type D	- 3 bed	2 storeys	46	
Type E	- 3 bed	2 storeys	41	
Type F	- 3 bed	2 storeys	15	
				139

- EXTERNAL FINISHES**
- WALLS:** PAINTED SAND / CEMENT RENDER OR PROPRIETARY PRECOLOURED RENDER FINISH. SELECTED BRICKWORK WHERE INDICATED ON DRAWINGS.
 - WINDOWS:** SELECTED PROPRIETARY DOUBLE / TRIPLE GLAZED WINDOW SYSTEM WITH FRAMES TO APPROVED COLOUR. OBSCURED GLAZING TO BATHROOMS AND EN-SUITES.
 - DOORS:** SELECTED PROPRIETARY DOORS AND GLAZED SIDE SCREENS TO APPROVED COLOUR.
 - RAINWATER GOODS:** uPVC OR POWDER COATED METAL GUTTERS AND RAINWATER PIPES TO SELECTED COLOUR.
 - MAIN ROOF:** CONCRETE ROOF TILES IN SELECTED COLOUR.
 - LOW LEVEL PROJECTION:** ZINC CANOPY TO ENTRANCE OF UNITS.
 - OTHER ITEMS:** uPVC OR POWDER COATED METAL FASCIAS, SOFFITS AND BARGE BOARDS PAINTED. MILDSTEEL RAILINGS AND BALUSTRADES.

MATERIAL CODE LEGEND

- 01 - BUFF BRICK - STANDARD BOND - LIGHT APPROVED TONE
- 02 - BUFF BRICK - FEATURE BOND - LIGHT APPROVED TONE
- 03 - BUFF BRICK - STANDARD BOND - BROWN APPROVED TONE
- 04 - BUFF BRICK - FEATURE BOND - BROWN APPROVED TONE
- 05 - SELF COLOURED RENDER - LIGHT APPROVED TONE
- 06 - SELF COLOURED RENDER - DARK APPROVED TONE
- 07 - CONCRETE ROOF TILES - DARK APPROVED TONE
- 08 - POWDERCOATED METALWORK OR uPVC - DARK APPROVED RAL COLOUR
- 09 - POWDERCOATED METAL SCREENING - DARK APPROVED RAL COLOUR
- 10 - CLEAR GLAZING WITH DARK APPROVED RAL COLOUR FRAMING
- 11 - OPACIFIED GLAZING WITH DARK APPROVED RAL COLOUR FRAMING



HOUSE TYPE A1

Ground floor area	46.2m ²
First floor area	47.5m ²
Second floor area	47.5m ²
Total Floor Area (4-bed unit):	141.2m ²

REFER TO STREET ELEVATIONS FOR LOCATION OF ELEVATION TYPES

REFER TO LANDSCAPE ARCHITECT'S DRAWINGS FOR ALL LANDSCAPING DETAILS INCLUDING BOUNDARY TREATMENTS

- Notes**
- Copyright Reserved
 - Work to figure dimensions only. Do not scale drawing.
 - The contractor is responsible for checking all levels and dimensions on site and shall refer all discrepancies to the Architect.
 - Where appropriate, for details of r.c. structure, or mechanical and electrical details, see Engineers drawings.
 - Proprietary items shall be fixed in strict accordance with manufacturers instructions.
 - Sizes of proprietary items shall be checked with manufacturer.
 - The contractor shall be responsible for the coordination of structure, finishes and services.

Issue Status

Progress	
Planning Application	
Fire Cert	
Disability Cert	
Tender	
Construction	
As Built	
Information Only	

No.	Date	Revision	Application	Initials
01	27/01/23	Planning Application		IFJ

Project Adamstown Extension - Clonburris SDZ Residential Development

Drawing Title House Type A2_End_Non-Handed_Plans, Elevations and Section

Drawing No 6268-P-102

Scale 1:100 @ A1 **Rev** 01 **Drawn** IFJ **Date** Jan' 23

bkdarchitects
BURKE-KENNEDY DOYLE

6-7 HARCOURT TERRACE, DUBLIN 2, IRELAND
t +353-1-618 2400 f +353-1-618 7885
e architect@bkd.ie www.bkd.ie