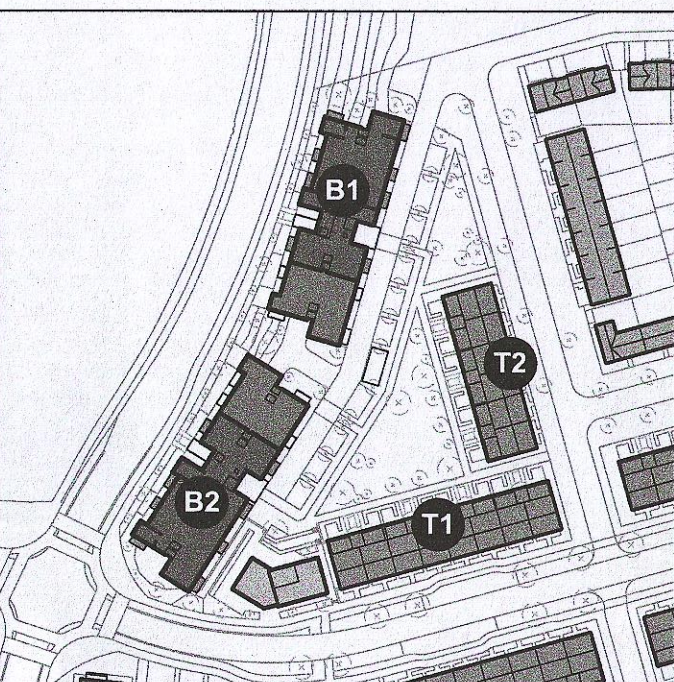


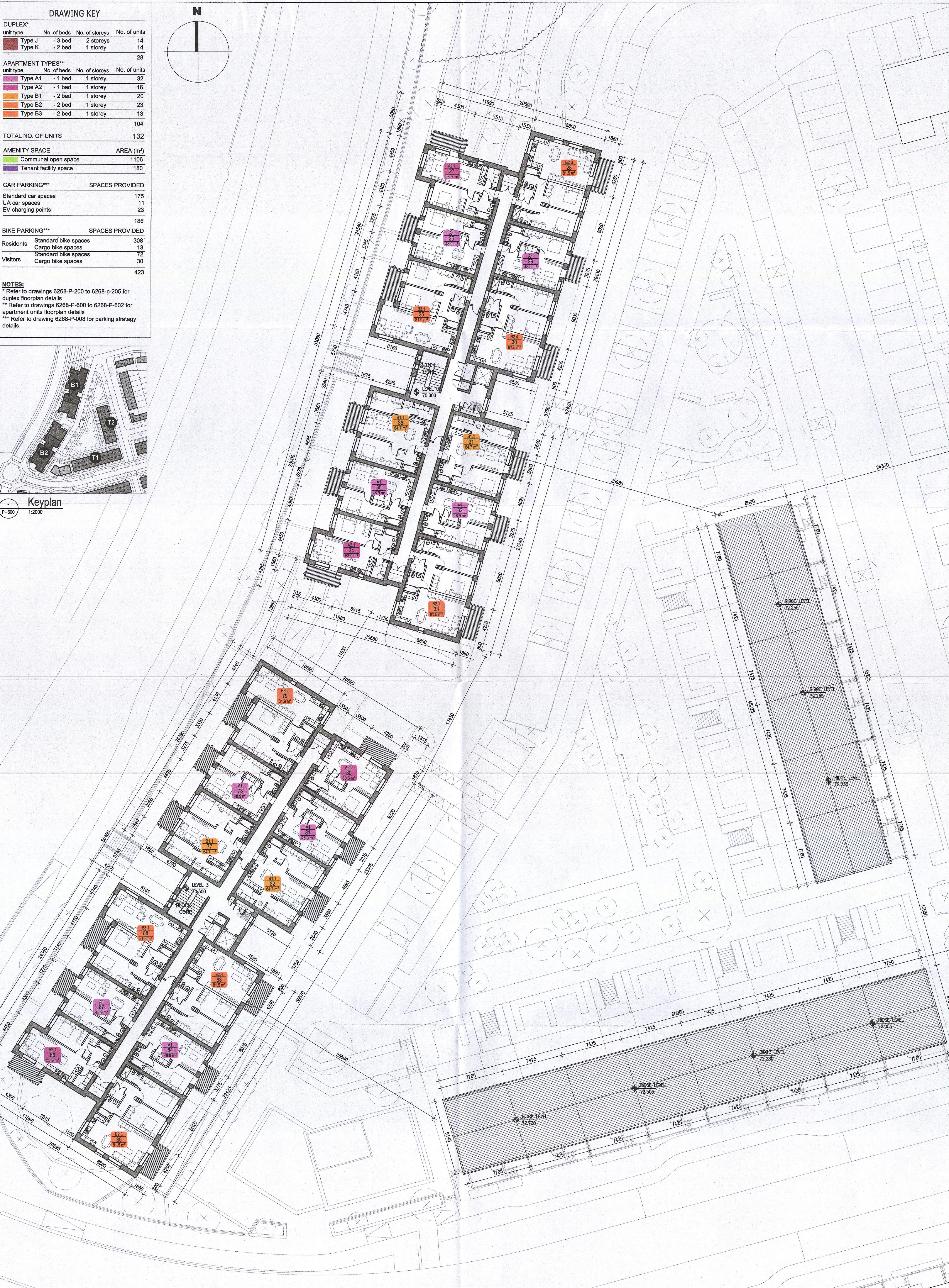
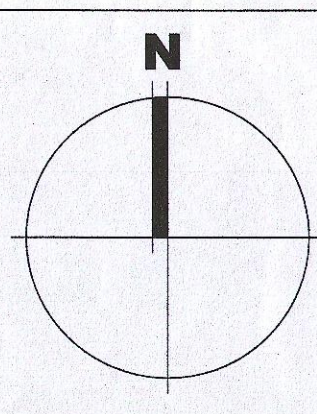
DRAWING KEY

DUPLEX**			
unit type	No. of beds	No. of storeys	No. of units
Type J	- 3 bed	2 storeys	14
Type K	- 2 bed	1 storey	14
28			
APARTMENT TYPES**			
unit type	No. of beds	No. of storeys	No. of units
Type A1	- 1 bed	1 storey	32
Type A2	- 1 bed	1 storey	16
Type B1	- 2 bed	1 storey	20
Type B2	- 2 bed	1 storey	23
Type B3	- 2 bed	1 storey	13
104			
TOTAL NO. OF UNITS			
			132
AMENITY SPACE			AREA (m ²)
Communal open space			1106
Tenant facility space			180
CAR PARKING***		SPACES PROVIDED	
Standard car spaces		175	
UA car spaces		11	
EV charging points		23	
		186	
BIKE PARKING***		SPACES PROVIDED	
Residents Standard bike spaces		308	
Cargo bike spaces		13	
Visitors Standard bike spaces		72	
Cargo bike spaces		30	
		423	

NOTES:
 * Refer to drawings 6268-P-200 to 6268-P-205 for duplex floorplan details
 ** Refer to drawings 6268-P-600 to 6268-P-602 for apartment units floorplan details
 *** Refer to drawing 6268-P-008 for parking strategy details



Keyplan
 P-300 1:2000



Notes 1. Copyright Reserved 2. Work to figured dimensions only. Do not scale drawing. 3. The contractor is responsible for checking all levels and dimensions on site and shall refer all discrepancies to the Architect. 4. Where appropriate, for details of r.c. structure, or mechanical and electrical details, see Engineers drawings. 5. Proprietary items shall be fixed in strict accordance with manufacturers instructions. 6. Sizes of proprietary items shall be checked with manufacturer. 7. The contractor shall be responsible for the coordination of structure, finishes and services.	Issue Status Progress Planning Application Fire Cert Disability Cert Tender Construction As Built Information Only	No. 01 Date 27/01/23 Revision Planning Application	Initials VB	Project Adamstown Extension - Clonburris SDZ Residential Development	6-7 HARCOURT TERRACE, DUBLIN 2, IRELAND T+353-1-618 2400 F+353-1-676 7385 architecture@bkd.ie www.bkd.ie