

DATE: 9 January 2023
DESIGNER: Andrew Weight
PROJECT No: 22005
PROJECT NAME: Kishoge

Outdoor Lighting Report

DUBLIN B6 Swords Enterprise Park, Swords, Dublin, K67YX37
W: www.afec.ie **E:** admin@afec.ie **P:** 01 6642836



Layout Report

General Data

Dimensions in Metres Angles in Degrees

Calculation Grids

ID	Grid Name	X	Y	X' Length	Y' Length	X' Spacing	Y' Spacing
1	Grid 1	478.21	365.67	162.39	135.23	6.50	5.41
2	Grid 2	617.64	406.17	25.57	82.89	1.02	3.32
3	Grid 3	602.57	377.47	32.18	29.45	1.29	1.18
4	Grid 4	605.78	458.54	22.10	26.49	0.88	1.06
5	Grid 5	565.35	387.56	37.35	21.61	1.49	0.86
6	Grid 6	480.39	368.21	37.15	115.87	1.49	4.63
7	Grid 7	527.18	359.69	48.48	54.84	1.94	2.19
8	Grid 8	578.59	405.44	40.49	9.05	1.62	0.36
9	Grid 9	585.80	422.84	32.36	49.07	1.29	1.96
10	Grid 10	561.32	470.88	61.41	14.41	2.46	0.58

Luminaires

Luminaire A Data

Supplier	
Type	BGP703 DW50 BL1
Lamp(s)	LED-HB 5.2S 740
Lamp Flux (klm)	8.00
File Name	Luma Gen2 Mini_BGP703_DW50 BL1_800 0_40LED_5.2S_CLO_L90_740.ies
Maintenance Factor	0.87
Imax70,80,90(cd/klm)	581.9, 40.5, 0.0
No. in Project	9

Luminaire B Data

Supplier	
Type	BGP703 DX70 BL2
Lamp(s)	LED-HB 5.2S 740
Lamp Flux (klm)	10.00
File Name	Luma Gen2 Mini_BGP703_DX70 BL2_1000 0_40LED_5.2S_CLO_L90_740.ies
Maintenance Factor	0.87
Imax70,80,90(cd/klm)	290.7, 296.6, 0.0
No. in Project	4

Luminaire C Data

Supplier	
Type	BGP701 DRN1 BL1
Lamp(s)	LED-HB 5.2S 740
Lamp Flux (klm)	1.40
File Name	Luma Gen2 Nano_BGP701_DRN1 BL1_14 00_6LED_5.2S_CLO_L90_740.ies
Maintenance Factor	0.87
Imax70,80,90(cd/klm)	458.9, 8.5, 0.0
No. in Project	32

DATE: 9 January 2023
PROJECT No: 22005

DESIGNER: Andrew Weight
PROJECT NAME: Kishoge

**LIGHTING
REALITY**

Layout

ID	Type	X	Y	Height	Angle	Tilt	Cant	Out-reach	Target X	Target Y	Target Z
1	A	638.06	459.83	6.00	180.00	0.00	0.00	0.20			
2	A	637.96	435.55	6.00	180.00	0.00	0.00	0.20			
3	A	637.81	405.37	6.00	180.00	0.00	0.00	0.20			
4	C	606.98	480.51	6.00	0.00	0.00	0.00	0.20			
5	C	619.44	471.81	6.00	90.00	0.00	0.00	0.20			
6	A	620.07	449.20	6.00	0.00	0.00	0.00	0.20			
7	A	620.45	419.86	6.00	0.00	0.00	0.00	0.20			
8	A	634.48	481.13	6.00	184.00	0.00	0.00	0.20			
9	A	613.58	403.15	6.00	311.00	0.00	0.00	0.20			
10	A	613.85	380.96	6.00	41.00	0.00	0.00	0.20			
11	A	632.60	387.90	6.00	148.00	0.00	0.00	0.20			
12	B	576.93	407.71	6.00	270.00	0.00	0.00	1.00			
13	B	597.43	388.53	6.00	90.00	0.00	0.00	1.00			
15	C	501.07	455.75	6.00	0.00	0.00	0.00	0.00			
16	C	503.05	437.76	6.00	0.00	0.00	0.00	0.00			
17	C	503.20	417.79	6.00	0.00	0.00	0.00	0.00			
18	C	501.21	402.91	6.00	0.00	0.00	0.00	0.00			
19	C	508.44	375.72	6.00	56.00	0.00	0.00	0.00			
20	C	489.88	464.53	6.00	285.00	0.00	0.00	0.00			
21	C	507.16	471.33	6.00	268.00	0.00	0.00	0.00			
22	C	500.79	387.62	6.00	29.00	0.00	0.00	0.00			
23	C	541.60	390.94	6.00	22.00	0.00	0.00	0.00			
24	C	537.45	399.17	6.00	56.00	0.00	0.00	0.00			
25	C	532.86	408.60	6.00	315.00	0.00	0.00	0.00			
26	C	544.84	406.24	6.00	252.00	0.00	0.00	0.00			
27	C	556.56	405.70	6.00	267.00	0.00	0.00	0.00			
28	C	568.38	407.76	6.00	308.00	0.00	0.00	0.00			
29	C	542.62	379.15	6.00	0.00	0.00	0.00	0.00			
30	C	524.02	371.89	6.00	69.00	0.00	0.00	0.00			
31	C	540.86	369.68	6.00	0.00	0.00	0.00	0.00			
32	C	584.72	410.39	6.00	90.00	0.00	0.00	0.00			
33	C	601.76	410.53	6.00	90.00	0.00	0.00	0.00			
34	C	616.89	410.92	6.00	90.00	0.00	0.00	0.00			
35	C	584.67	426.27	6.00	180.00	0.00	0.00	0.00			
36	C	597.92	474.94	6.00	270.00	0.00	0.00	0.50			
37	C	573.37	468.08	6.00	90.00	0.00	0.00	0.50			

DATE: 9 January 2023
PROJECT No: 22005

DESIGNER: Andrew Weight
PROJECT NAME: Kishoge

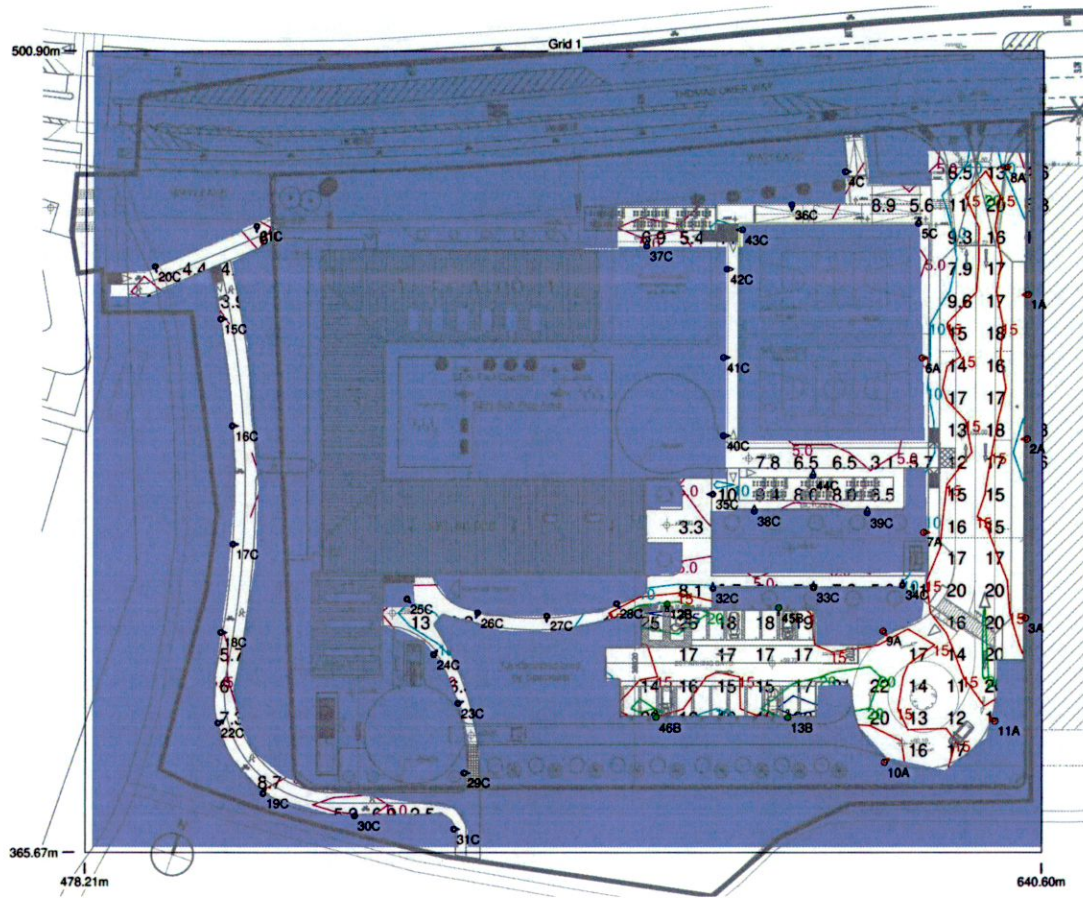
**LIGHTING
REALITY**

Layout Continued

ID	Type	X	Y	Height	Angle	Tilt	Cant	Out-reach	Target X	Target Y	Target Z
38	C	591.69	423.40	6.00	90.00	0.00	0.00	0.50			
39	C	610.81	423.14	6.00	90.00	0.00	0.00	0.50			
40	C	586.46	436.16	6.00	0.00	0.00	0.00	0.50			
41	C	586.46	449.29	6.00	0.00	0.00	0.00	0.50			
42	C	587.00	464.11	6.00	0.00	0.00	0.00	0.50			
43	C	589.58	470.77	6.00	180.00	0.00	0.00	0.50			
44	C	601.64	429.38	6.00	90.00	0.00	0.00	0.50			
45	B	595.86	407.08	6.00	270.00	0.00	0.00	1.00			
46	B	575.06	388.53	6.00	99.00	0.00	1.00	1.00			

Horizontal Illuminance (lux)

Grid 1



Results

Eav	12.48
Emin	2.45
Emax	30.32
Emin/Emax	0.08
Emin/Eav	0.20

Horizontal Illuminance (lux)

Grid 2

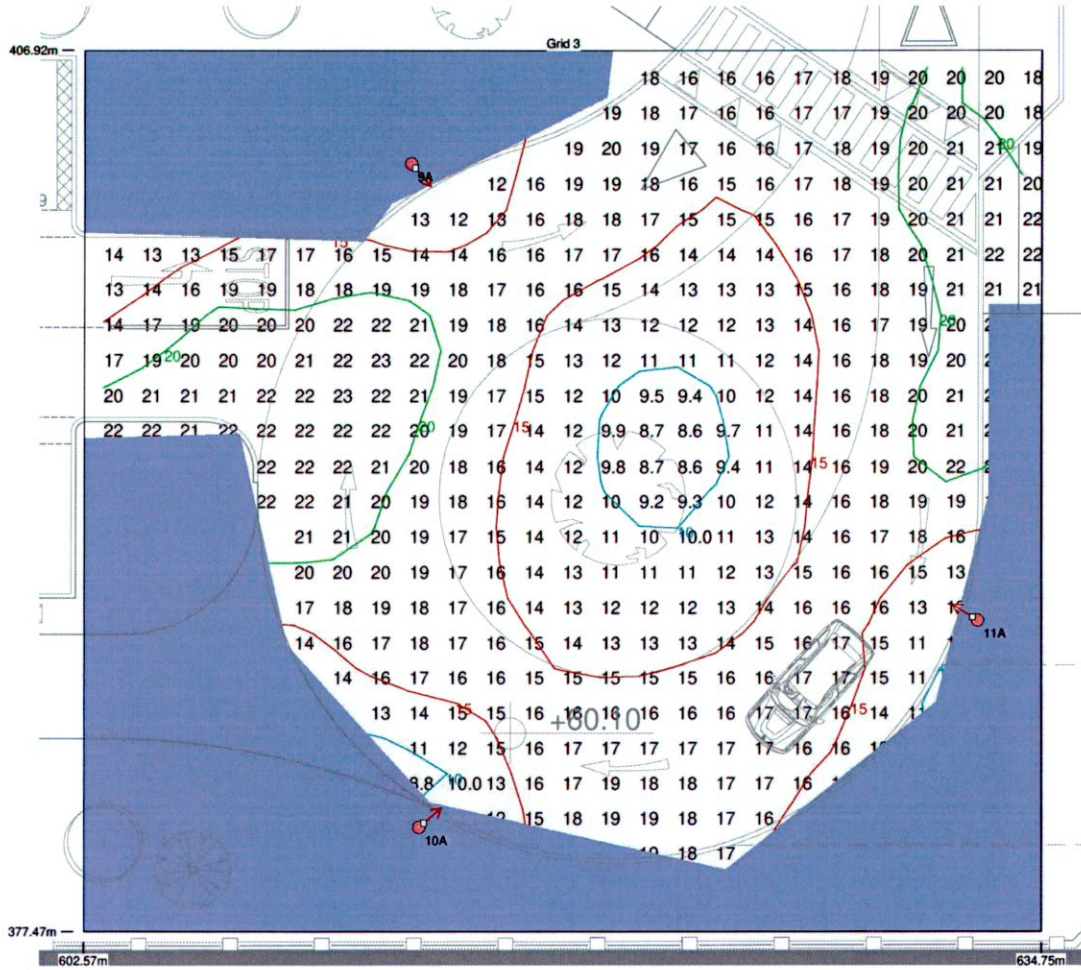


Results

Eav	13.80
Emin	2.15
Emax	22.65
Emin/Emax	0.09
Emin/Eav	0.16

Horizontal Illuminance (lux)

Grid 3

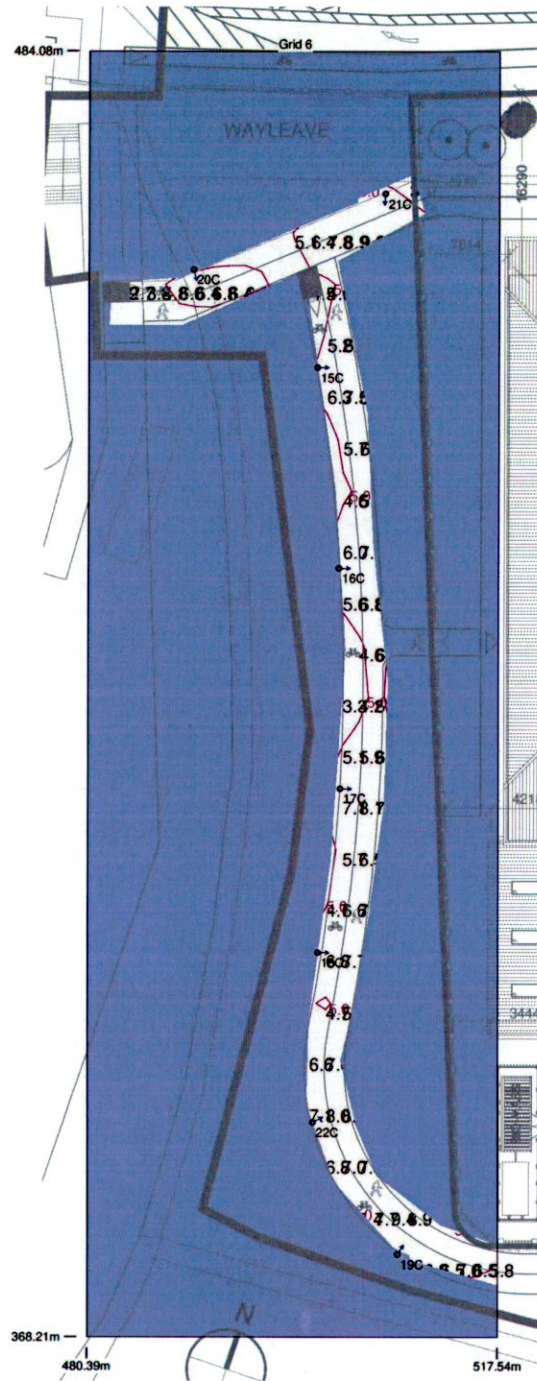


Results

Eav	16.47
Emin	8.61
Emax	22.71
Emin/Emax	0.38
Emin/Eav	0.52

Horizontal Illuminance (lux)

Grid 6

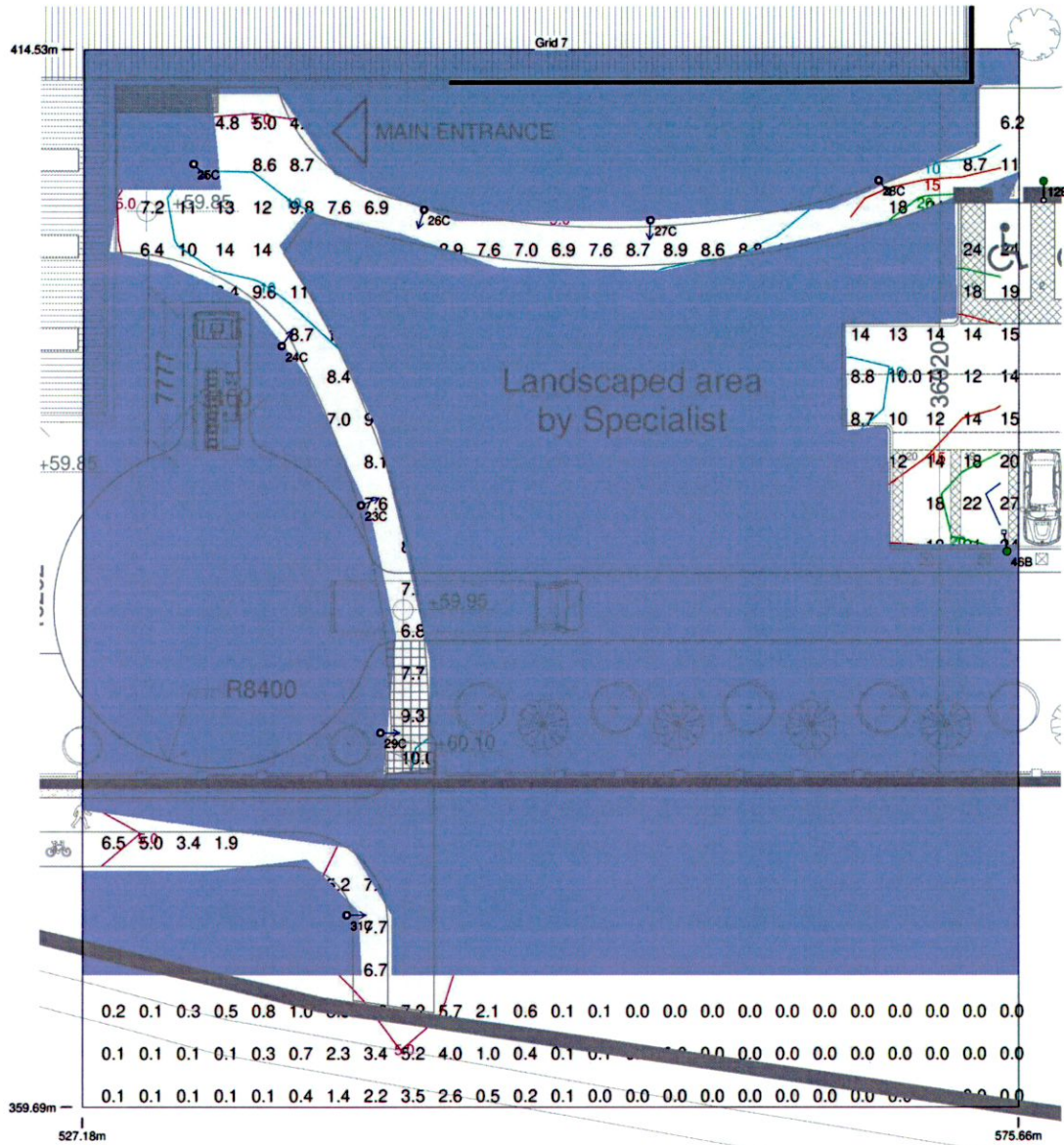


Results

Eav	6.28
Emin	1.87
Emax	9.36
Emin/Emax	0.20
Emin/Eav	0.30

Horizontal Illuminance (lux)

Grid 7

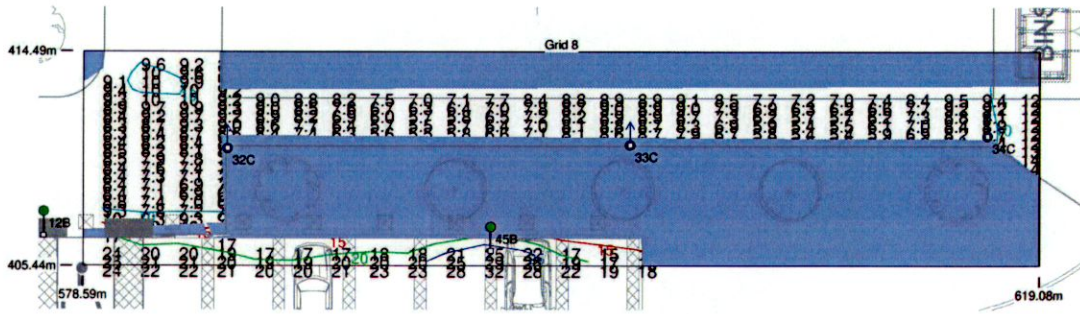


Results

Eav	6.27
Emin	0.01
E _{max}	26.78
E _{min} /E _{max}	0.00
E _{min} /E _{av}	0.00

Horizontal Illuminance (lux)

Grid 8

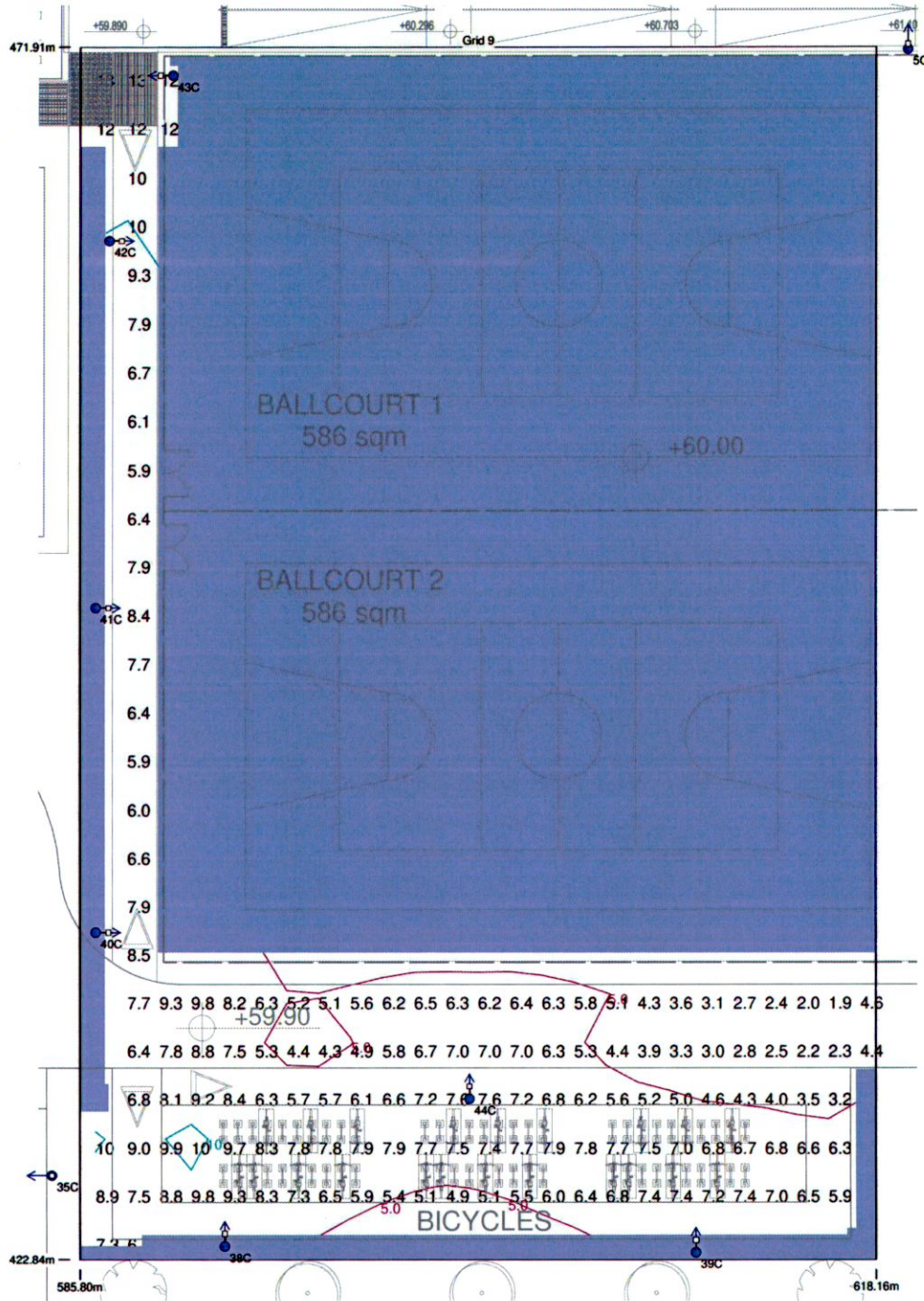


Results

Eav	10.46
Emin	5.30
Emax	32.34
Emin/Emax	0.16
Emin/Eav	0.51

Horizontal Illuminance (lux)

Grid 9

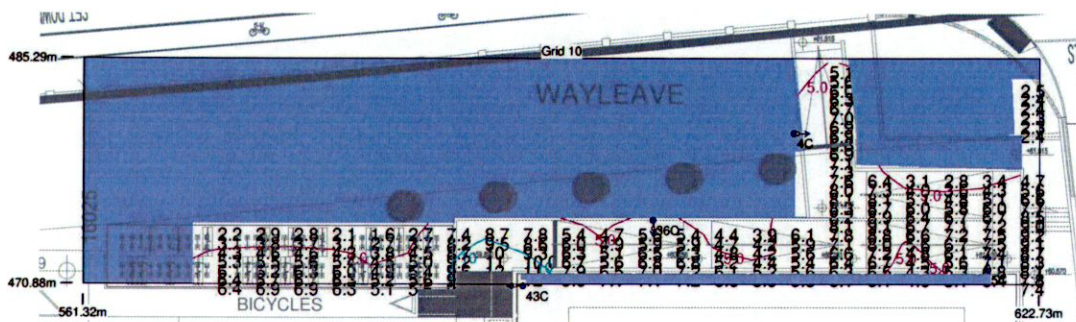


Results

Eav	6.71
Emin	1.94
Emax	12.71
Emin/Emax	0.15
Emin/Eav	0.29

Horizontal Illuminance (lux)

Grid 10



Results

Eav	6.28
Emin	1.60
Emax	12.85
Emin/Emax	0.12
Emin/Eav	0.25