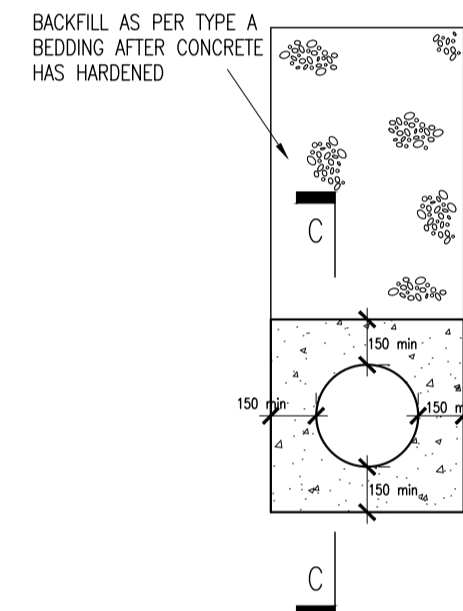
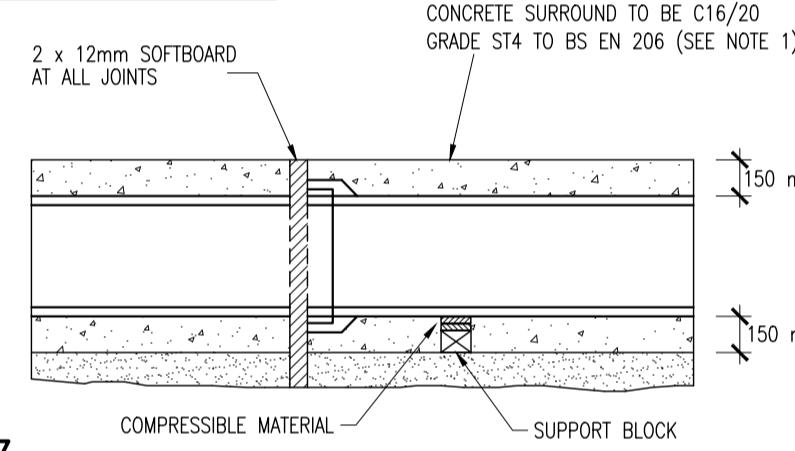


FLOW CONTROL MANHOLE DETAIL
SCALE 1:25

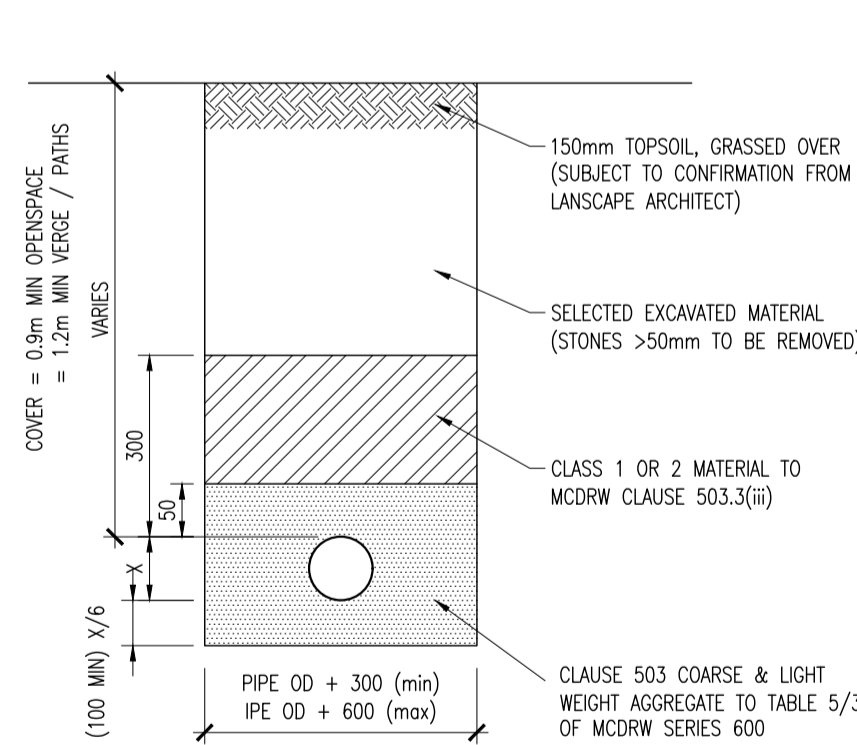


CONCRETE BEDDING TO BE USED WHERE COVER LESS THAN 1.2m AND / OR AS DIRECTED BY THE ENGINEER (REFER TO LONGITUDINAL SECTIONS)

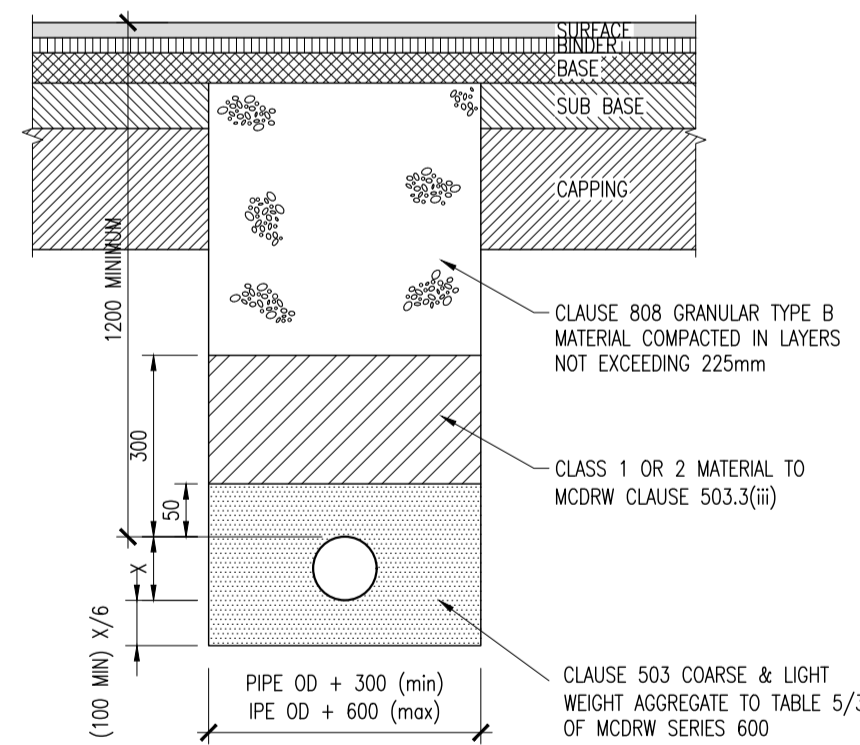


RIGID PIPES : SURROUND

TYPE Z
CONCRETE BEDDING/SURROUND
(COVER 750mm - 1200mm)



A - BEDDING/BACKFILL DETAIL
ACROSS OPEN SPACE (SIMILAR)

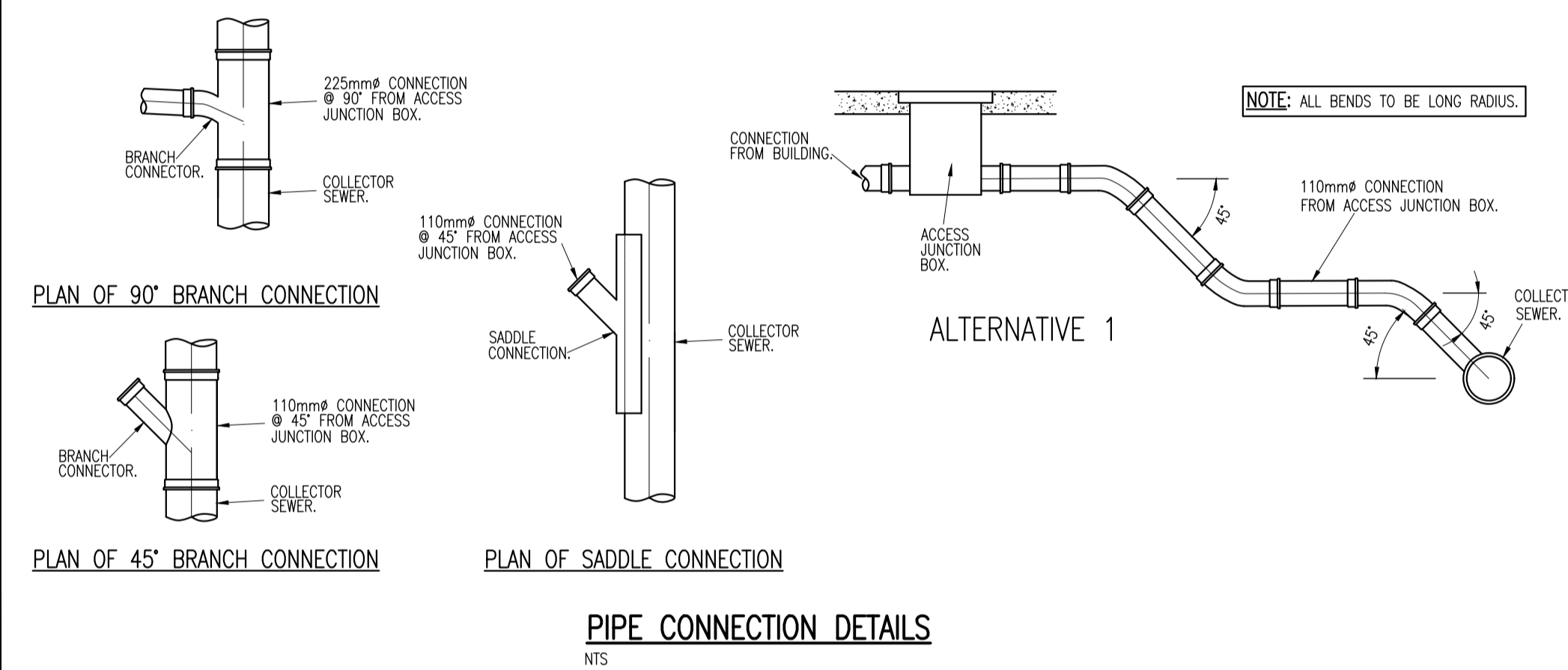


B - BEDDING/BACKFILL DETAIL
IN ROADWAYS/VERGES/PATHS

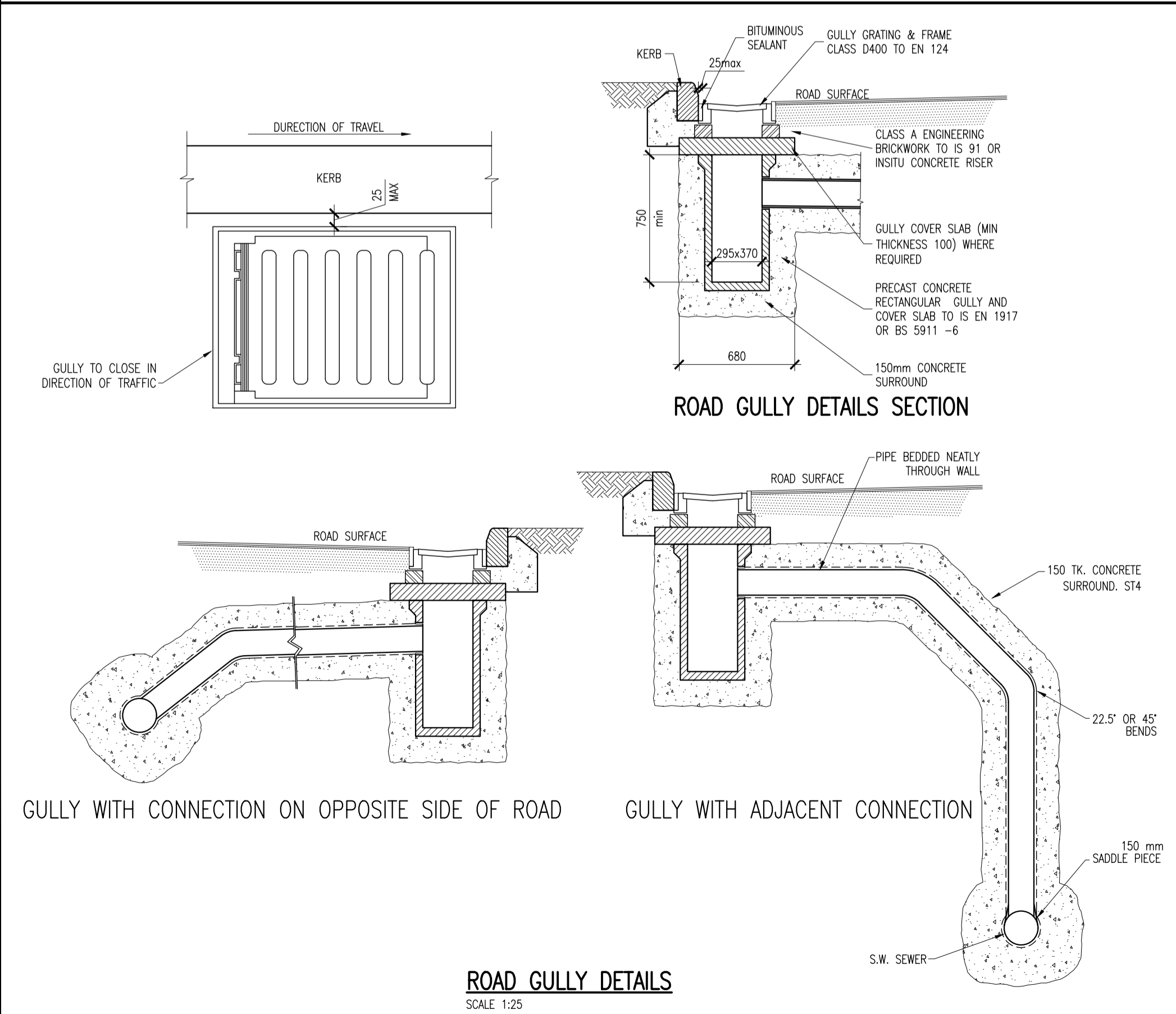
C - TRENCH BACKFILL/REINSTATEMENT DETAIL
IN EXISTING ROADS

TYPE S
(COVER > 1.2 METRES TO CROWN)

PIPE BEDDING DETAILS
SCALE 1:25



PIPE CONNECTION DETAILS
NTS



ROAD GULLY DETAILS
SCALE 1:25



© COPYRIGHT OF THIS DRAWING IS RESERVED BY DBFL CONSULTING ENGINEERS. NO PART SHALL BE REPRODUCED OR TRANSMITTED WITHOUT THEIR WRITTEN PERMISSION.

NO CHANGES OF WHATSOEVER NATURE ARE TO BE MADE TO ANY DETAILS SET OUT OR CONTAINED IN ANY DBFL SPECIFICATIONS OR DRAWINGS UNLESS THE EXPRESS CONSENT HAS BEEN OBTAINED IN ADVANCE, IN WRITING, FROM DBFL.

- NOTES:
- WHERE ROCKS OR OTHER HARD TRENCH BOTTOM IS ENCOUNTERED, THE FIGURE DENOTED BY * IS TO BE DOUBLED.
 - TYPE 1 GRANULAR MATERIAL : BROKEN STONE OR GRAVEL TO PASS 10mm SIEVE AND BE RETAINED ON 5mm SIEVE.
 - TYPE 2 GRANULAR MATERIAL : BROKEN STONE OR GRAVEL TO PASS 10mm - 25mm SIEVE, ACCORDING TO PIPE SIZE, (SEE TABLE) AND BE RETAINED ON 5mm SIEVE.
 - CLAUSE 601 S.R.W. BACKFILL : UNIFORM READILY COMPACTED MATERIAL FREE FROM TREE ROOTS, VEGETABLE MATTER, BUILDING DEBRIS, AND FROZEN SOIL AND EXCLUDING CLAY LUMPS RETAINED ON A 75mm SIEVE AND STONES RETAINED ON A 37.5mm SIEVE.
 - RIGID PIPES SHALL MEAN CAST OR SPUN IRON, CONCRETE OR CLAY.
 - GULLY GRATINGS AND FRAMES SHALL COMPLY WITH THE REQUIREMENTS OF I.S./E.N./124 1994. GULLIES SHALL BE CLASS D400.
 - GULLY WALLS SHALL BE CONSTRUCTED IN CLASS 30N/mm² PRECAST OR INSTU CONCRETE OR ALTERNATELY IN SOLID CONCRETE BLOCKS DESIGNATED S10, STRENGTH 10N/mm² IF APPROVED BY THE ENGINEER
 - ALL PIPES TO BE BEDDED IN ACCORDANCE WITH MANUFACTURERS RECOMMENDATIONS
 - SURFACE WATER SEWERS TO BE CONCRETE PIPES TO IS EN1916 AND IS 6 2004.
 - ALL FOUL SEWERS SHALL BE TO IRISH WATER STANDARD DETAILS
 - ALL SURFACE WATER DRAINAGE SHALL BE IN ACCORDANCE WITH THE GREATER DUBLIN CODE OF PRACTICE FOR DRAINAGE WORKS AND LOCAL AUTHORITY REQUIREMENTS.

0	13-12-22	ISSUED FOR PLANNING	RMC	DCB
rev	date	description	by	chkd.
STATUS CODES				
purpose	acceptance			
P3 - PLANNING PERMISSION	S - ISSUED			
DUBLIN OFFICE: Ormond House, Upper Ormond Quay, Dublin 7, D07 W704 PHONE: +353 1 400 4000 CORK OFFICE: 14 South Mall, Cork, T12 CT91 PHONE: +353 21 2024538 WATERFORD OFFICE: Suite 8b The Atrium, Maritime Gate, Canada Street, Waterford, X91 W028 PHONE: +353 51 700 000 project ref.				
CLONBURRIS T2				
drawing title				
TYPICAL DRAINAGE DETAILS SHEET 2				
client				
CAIRN HOMES				
designed by	author	scale	sheet size	
DCB	RMC	AS SHOWN	A1	
drawing no.	revision			
CLB-1B-94-SW-DTM-DR-DBFL-CE-5002	0			