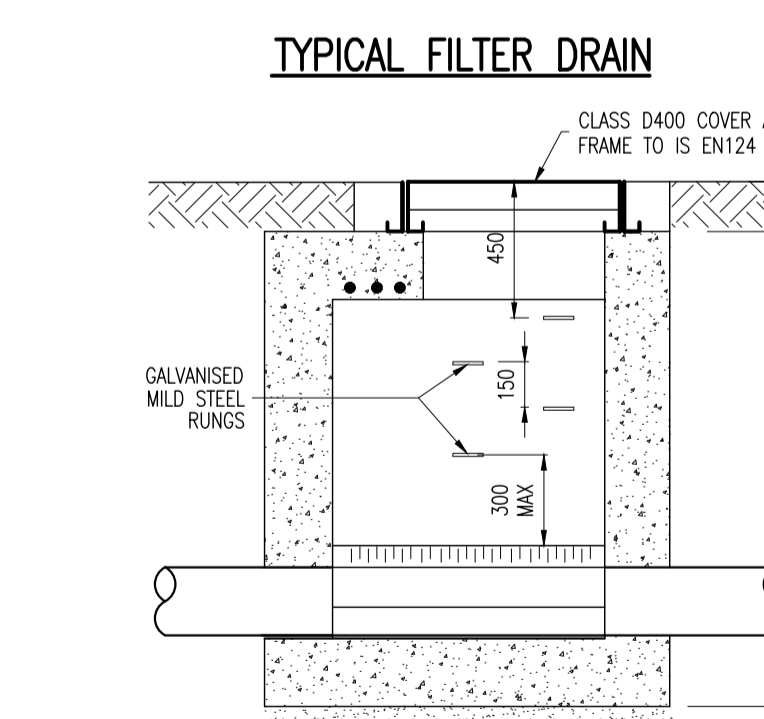
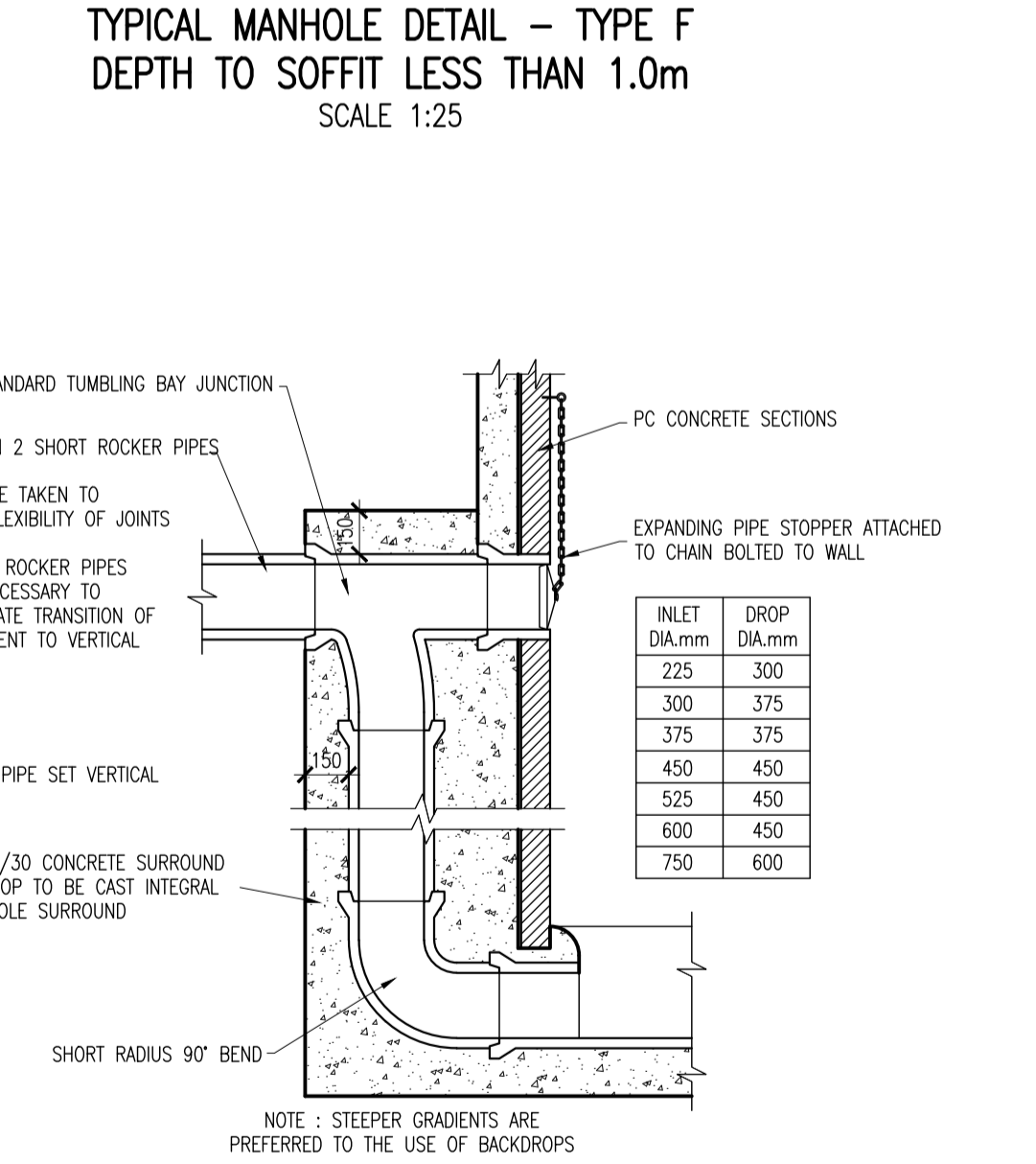
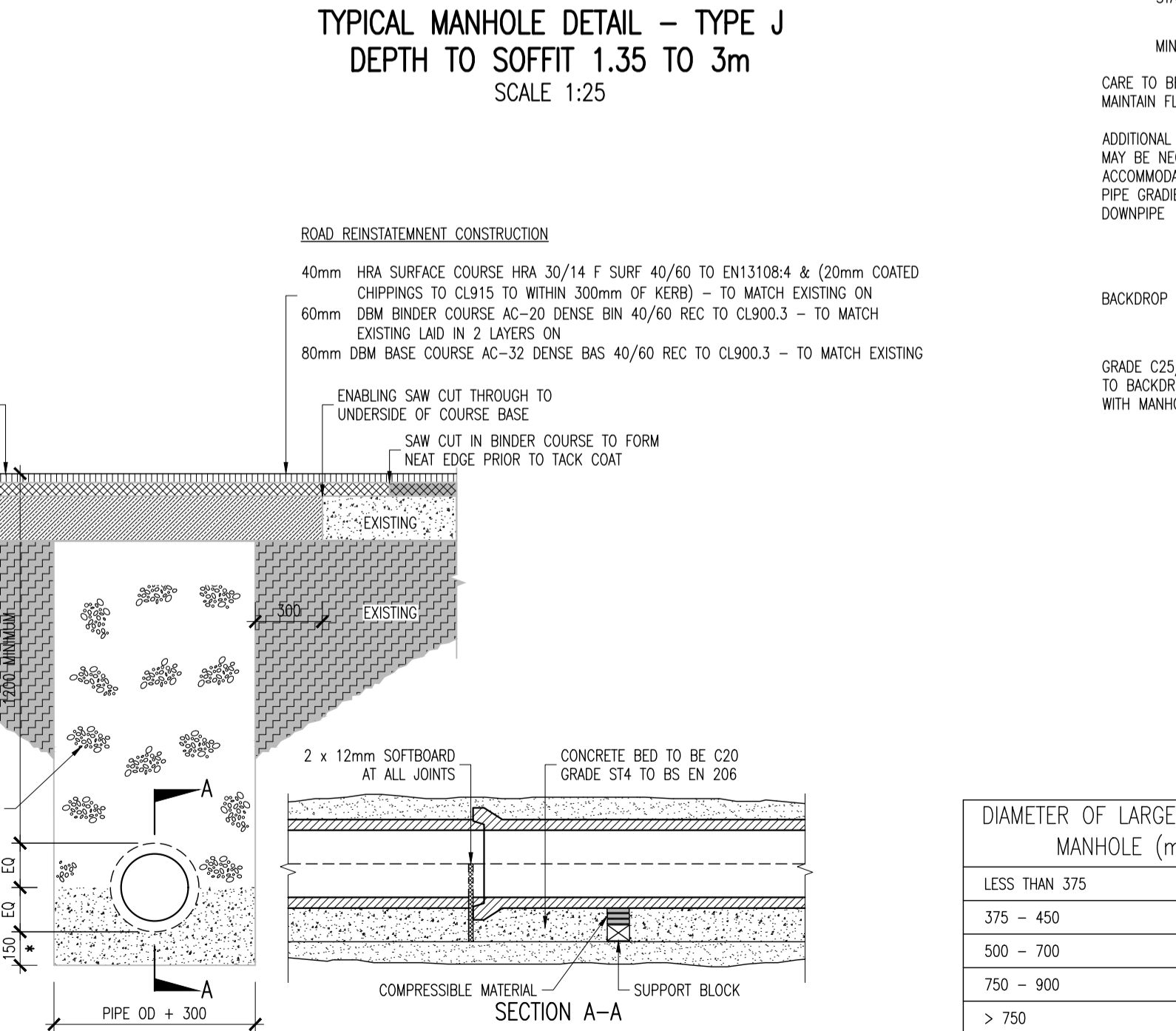
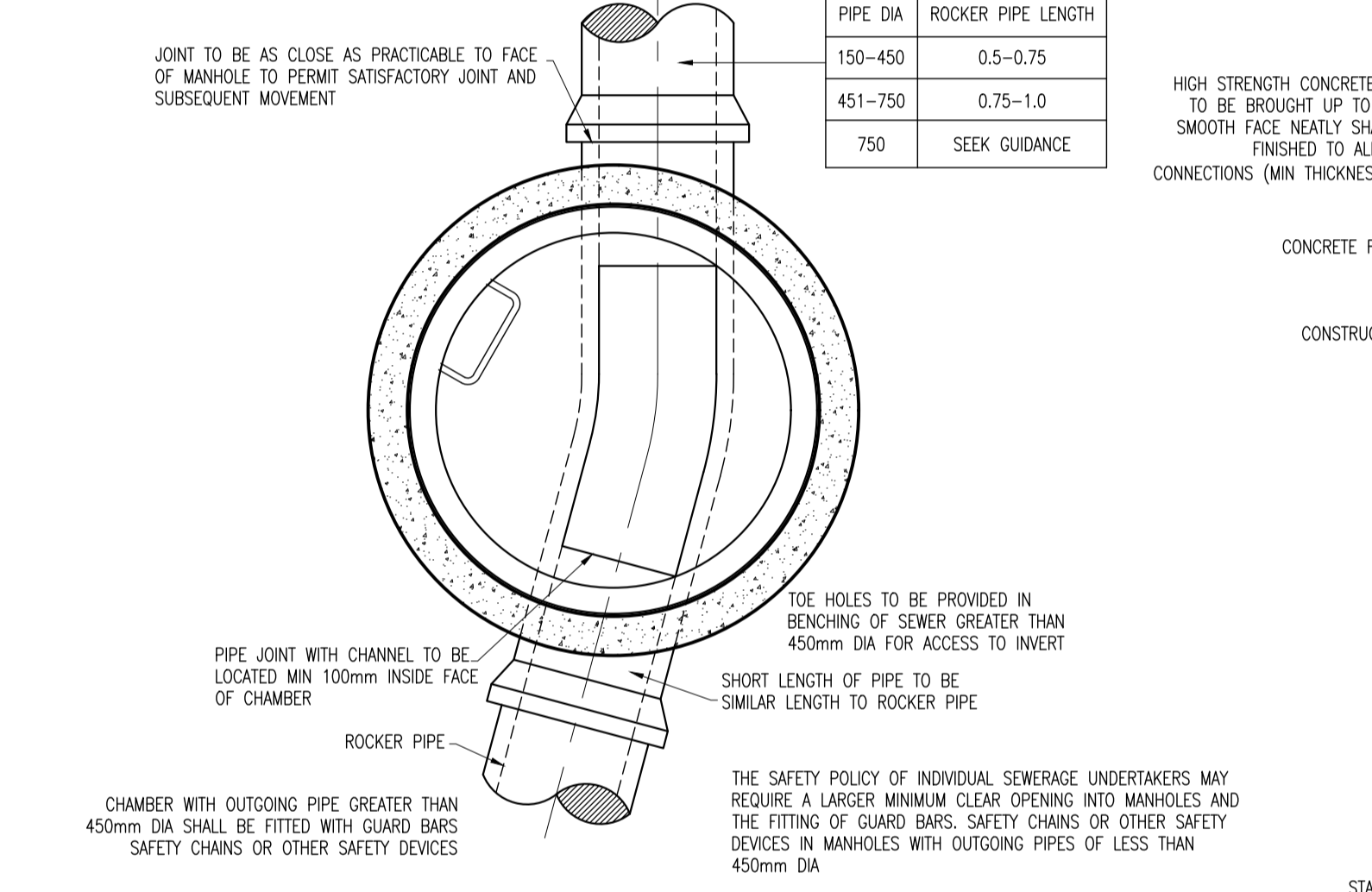
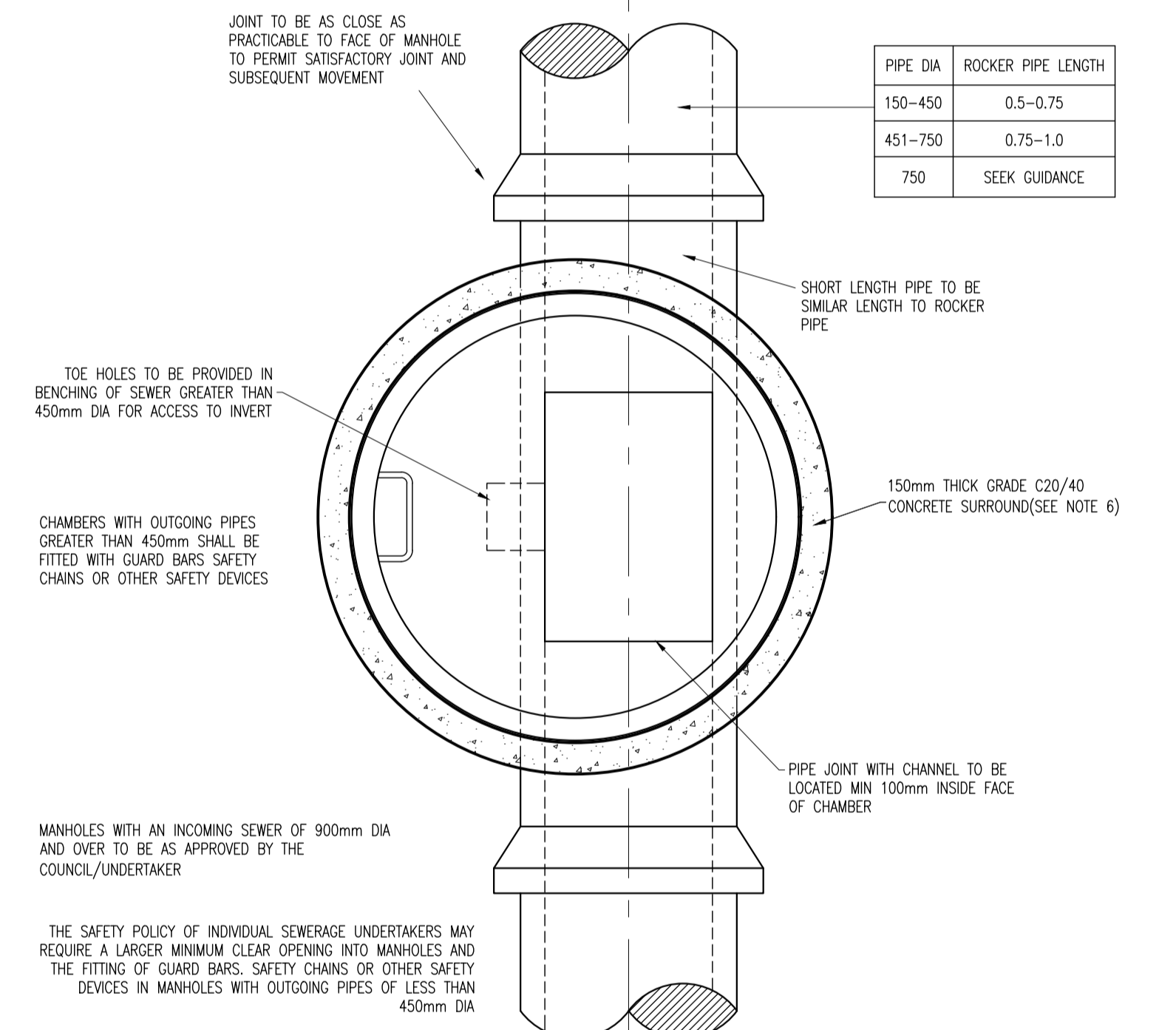
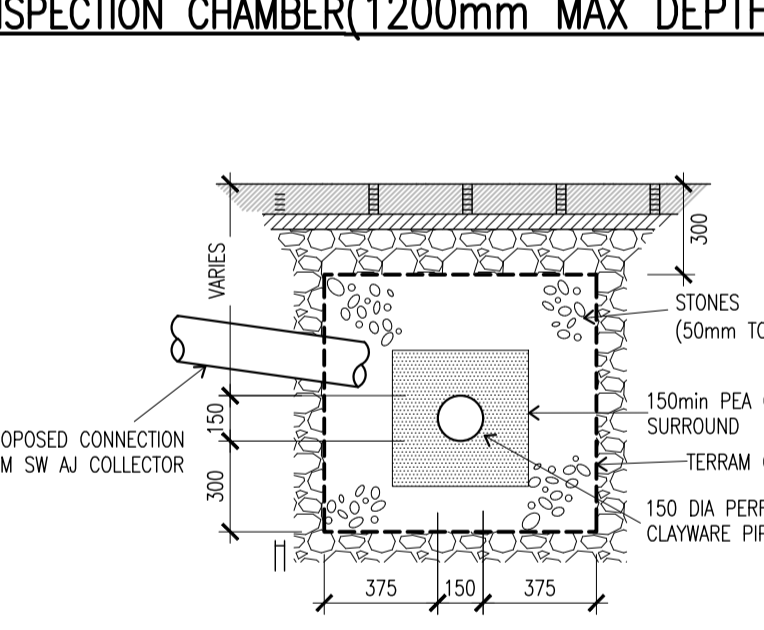
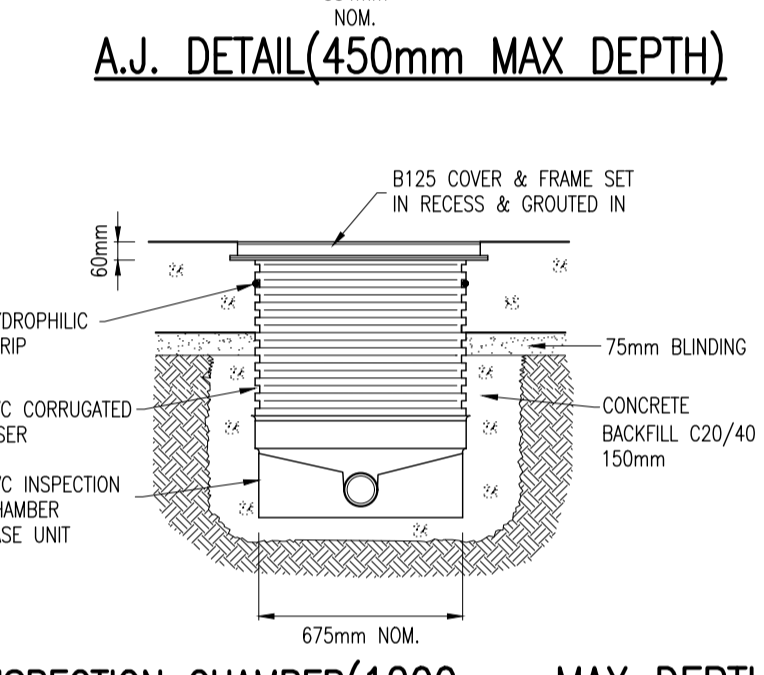
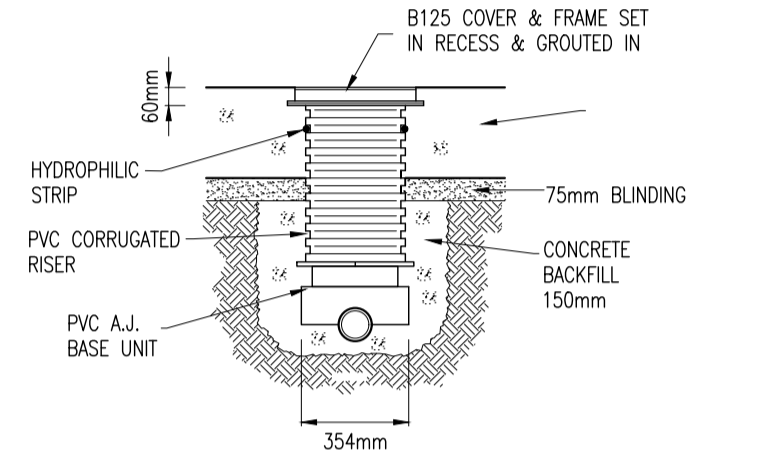
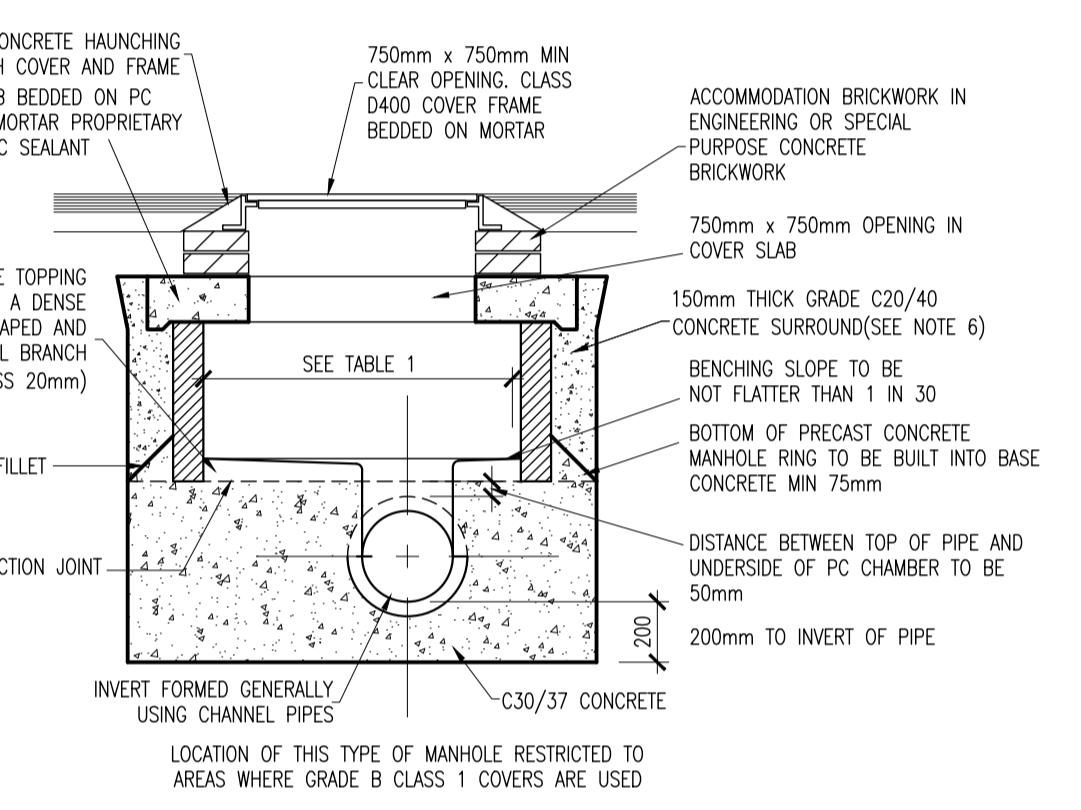
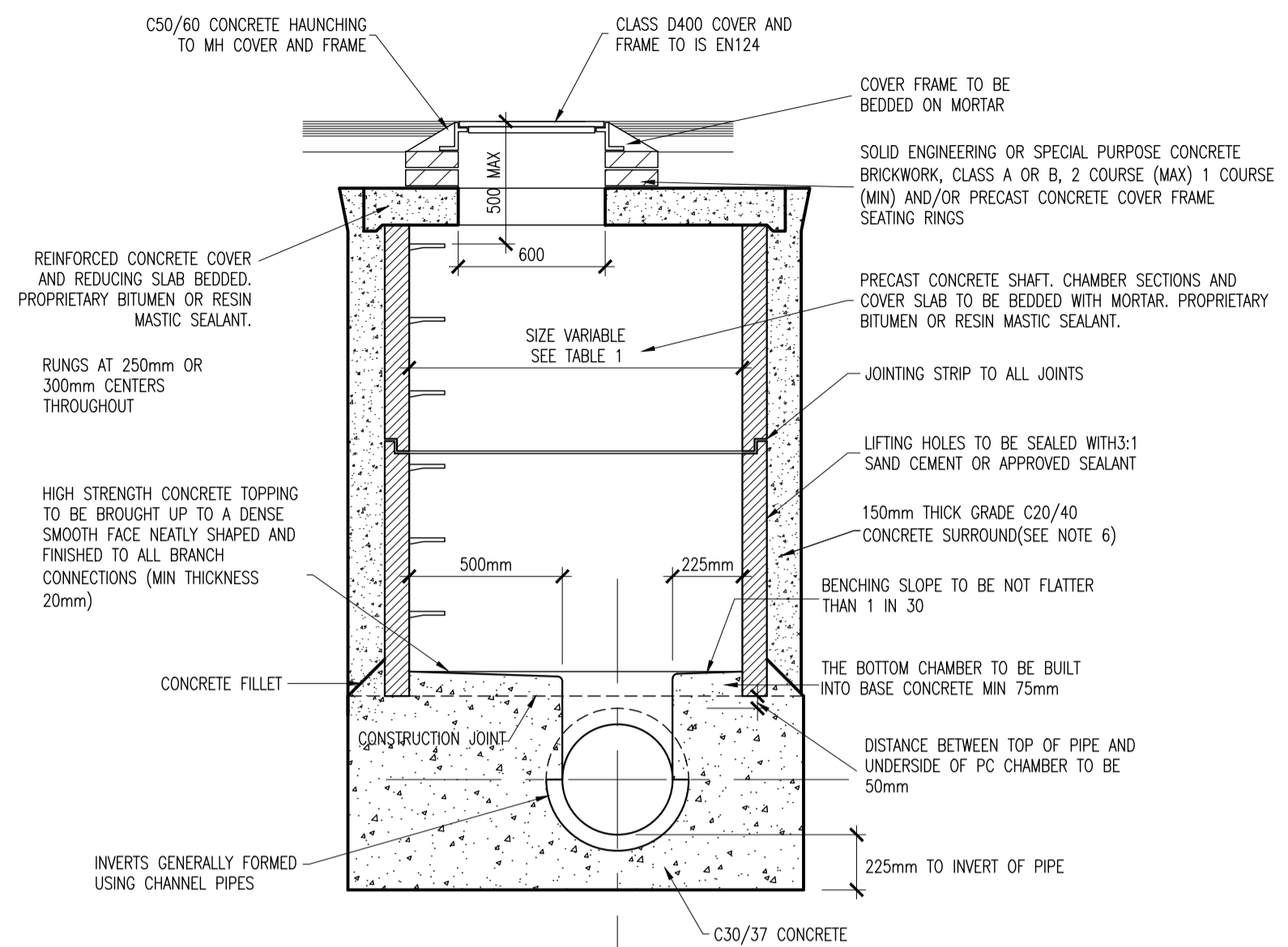
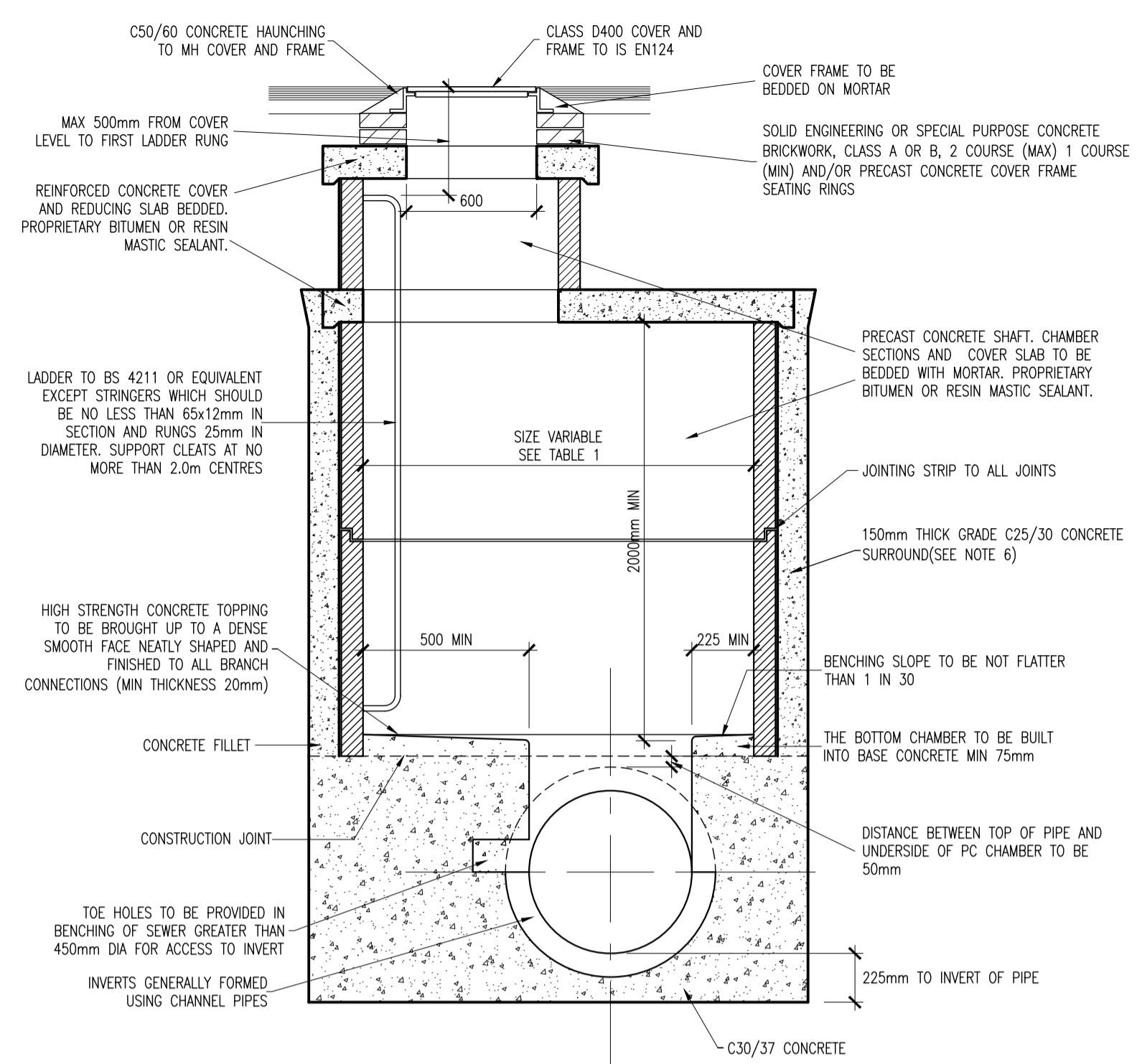


© COPYRIGHT OF THIS DRAWING IS RESERVED BY DBFL CONSULTING ENGINEERS. NO PART SHALL BE REPRODUCED OR TRANSMITTED WITHOUT THEIR WRITTEN PERMISSION. NO CHANGES OF WHATSOEVER NATURE ARE TO BE MADE TO ANY DETAILS SET OUT OR CONTAINED IN ANY DBFL SPECIFICATIONS OR DRAWINGS UNLESS THE EXPRESS CONSENT HAS BEEN OBTAINED IN ADVANCE, IN WRITING, FROM DBFL.

- NOTES:
- ALL SEWERS SHALL BE PRESSURE TESTED PRIOR TO BACKFILLING
  - TYPE 1 GRANULAR MATERIAL : BROKEN STONE OR GRAVEL TO PASS 10mm SIEVE AND BE RETAINED ON 5mm SIEVE.
  - TYPE 2 GRANULAR MATERIAL : BROKEN STONE OR GRAVEL TO PASS 10mm - 25mm SIEVE, ACCORDING TO PIPE SIZE, (SEE TABLE) AND BE RETAINED ON 5mm SIEVE.
  - TYPE 3 SELECTED FILL : UNIFORM READILY COMPACTED MATERIAL FREE FROM TREE ROOTS, VEGETABLE MATTER, BUILDING DEBRIS, AND FROZEN SOIL AND EXCLUDING CLAY LUMPS RETAINED ON A 75mm SIEVE AND STONES RETAINED ON A 37.5mm SIEVE.
  - RIGID PIPES SHALL MEAN CAST OR SPUN IRON, CONCRETE OR CLAY.
  - CONCRETE SURROUND REQUIRED TO ALL MANHOLE RINGS.
  - ALL LADDERS, RUNGS, SAFETY CHAINS etc SHALL BE HOT DIPPED GALVANISED TO BS 729 OR EQUIVALENT
  - ALL FOUL SEWERS SHALL BE IN ACCORDANCE WITH IRISH WATER STANDARD DETAILS DOCUMENT.
  - ALL SURFACE WATER DRAINAGE SHALL BE IN ACCORDANCE WITH GREATER DUBLIN CODE OF PRACTICE FOR DRAINAGE WORKS



| DIAMETER OF LARGEST PIPE IN MANHOLE (mm) | CHAMBER SECTION DIAMETER (mm) |
|--|-------------------------------|
| LESS THAN 375                            | 1200                          |
| 375 - 450                                | 1350                          |
| 500 - 700                                | 1500                          |
| 750 - 900                                | 1800                          |
| > 750                                    | PIPE SIZE + 1.3m              |

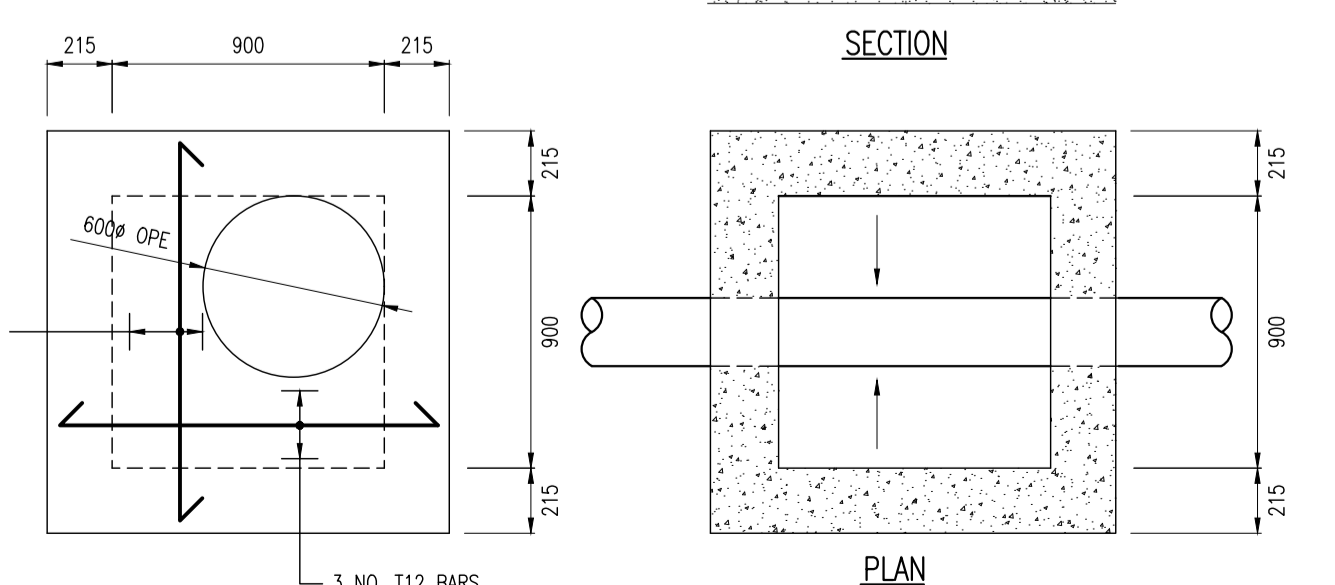


TABLE 1

|     |          |                     |     |       |
|-----|----------|---------------------|-----|-------|
| 0   | 13-12-22 | ISSUED FOR PLANNING | RMC | DCB   |
| rev | date     | description         | by  | chkd. |

STATUS CODES

|                          |            |
|--------------------------|------------|
| purpose                  | acceptance |
| P3 - PLANNING PERMISSION | S - ISSUED |

**DBFL Consulting Engineers**  
Civil, Structural & Transportation Engineering  
www.dbfl.ie

DUBLIN OFFICE: Ormond House, Upper Ormond Quay, Dublin 7, D07 W704  
PHONE: +353 1 400 4000  
CORK OFFICE: 14 South Mall, Cork, T12 CT91  
PHONE: +353 21 2024538  
WATERFORD OFFICE: Suite 8b The Atrium, Maritime Gate, Canada Street, Waterford, X91 W028  
PHONE: +353 51 790 000

project ref.  
**CLONBURRIS T2**

drawing title  
**TYPICAL DRAINAGE DETAILS SHEET 1**

client  
**CAIRN HOMES**

|                                  |          |          |            |
|----------------------------------|----------|----------|------------|
| designed by                      | author   | scale    | sheet size |
| DCB                              | RMC      | AS SHOWN | A1         |
| drawing no.                      | revision |          |            |
| CLB-1B-94-SW-DTM-DR-DBFL-CE-5001 | 0        |          |            |