



Clonburris T1

Materials, Colours and Textures Submission

For Proposed Residential Development
Clonburris T1, Co. Dublin

Compliance Submission in Accordance with
Planning Condition no. 15 (Reg. Ref: SDZ21A/022)

Contents

1.0 Introduction	2
1.1 Materials & Finishes	2
2.0 Materials & Finishes	3
3.0 Elevations	8
3.1 Block 1	8
3.2 Block 2 & 3	9
3.3 Local Node	10
3.4 Duplex Type 01	11
3.5 Duplex Type 02	12
3.6 Duplex Type 03	13
3.7 Houses	14
3.8 Fine Urban Grain Houses	15

Project Code	22001
Created By	SM
Checked By	LB
Issue Type	RevE
Issued On	04 Jan 2023

1.0 Introduction

1.1 Materials & Finishes

Block 1 is proposed in predominately buff brick which will be complimented by dark grey brick to provide visual interest while maintaining a cohesive whole. The base of the apartment block is grounded through use of brick while the upper levels are primarily treated with the light-coloured render. This render is complimented with a mix of stepped brick and grey render relief panels. The feature corner of the block is treated with a stone cladding that acts as a focal point at the entrance to the scheme. This varied material palette is paired with grey windows and balconies with grey vertical metal balustrades.

The internal courtyard area is generally finished in light-coloured render for improved daylighting with a mix between dark render and brickwork panels used at intervals to break down the massing of these elevations.

Block 2 and 3 are mirrors of each other and are treated similarly to Block 1, providing harmony across the blocks while respecting the heirarchy of the scheme. Block 2 and 3 have brick bases similar to Block 1, but with a play between buff and dark grey brick. The two primary corners of the building are treated with buff brick to emphasis the building edges while light-coloured render makes up the rest of the upper floors. Vertical grey render panels break up the facade at appropriate intervals which compliment the grey balconies and window frames while creating contrast on the facade.

The Local Node uses material and facade articulation to establish itself as distinct from it's surroundings. It is treated in a combination of buff and dark grey brick, but in a unique manner to ensure differentiation from the residential parts of the development. Large multi-storey panels of grey brick set into the buff brick evoke the same

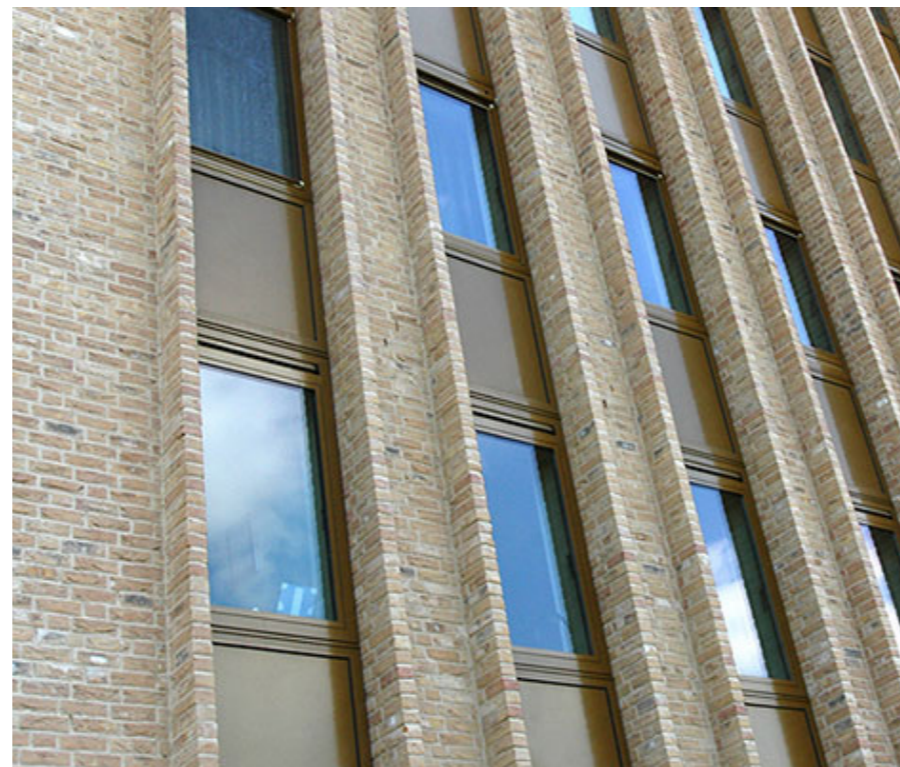
language used on the blocks, but at a different scale which is complimented by the staggered window pattern which injects energy into the elevation. The less public facing elevations are treated in an light-coloured render for improved daylighting and calmness.

The duplex blocks are treated with same buff and grey brick as the apartment blocks, which is complimented by the light-coloured render. Variation in the treatment of the duplex blocks helps to break up the elevation while introducing character and helping to identify localised areas. As with the apartment blocks, the duplexes are grounded in either the buff brick or dark grey brick which is offset by either light-coloured render or buff brick above respectively. Grey render or staggered brick relief panels around the grey windows introduce further visual interest.

For the houses, a mottled buff brick is used alongside a light-coloured render as the primary material palette for the houses. The brick is used to identify key elevations at corners and junctions as well as the brick porches. Along the canal edge a grey brick is introduced to give this area an individual distinctive design. These materials are complimented by traditional roof tiles and grey windows.

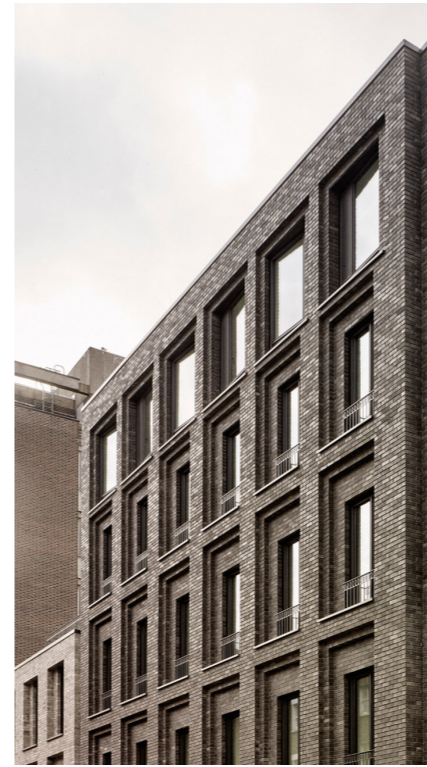
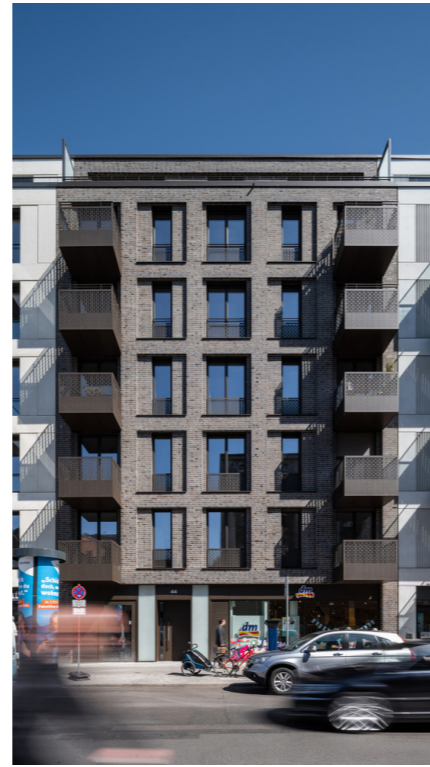
2.0 Materials & Finishes

2.1 Light Buff Brick



2.0 Materials & Finishes

2.3 Dark Brickwork



2.0 Materials & Finishes

2.4 Stone Cladding



2.0 Materials & Finishes

2.5 Render



2.0 Materials & Finishes

2.6 Windows, Sills, Balconies & Roofs



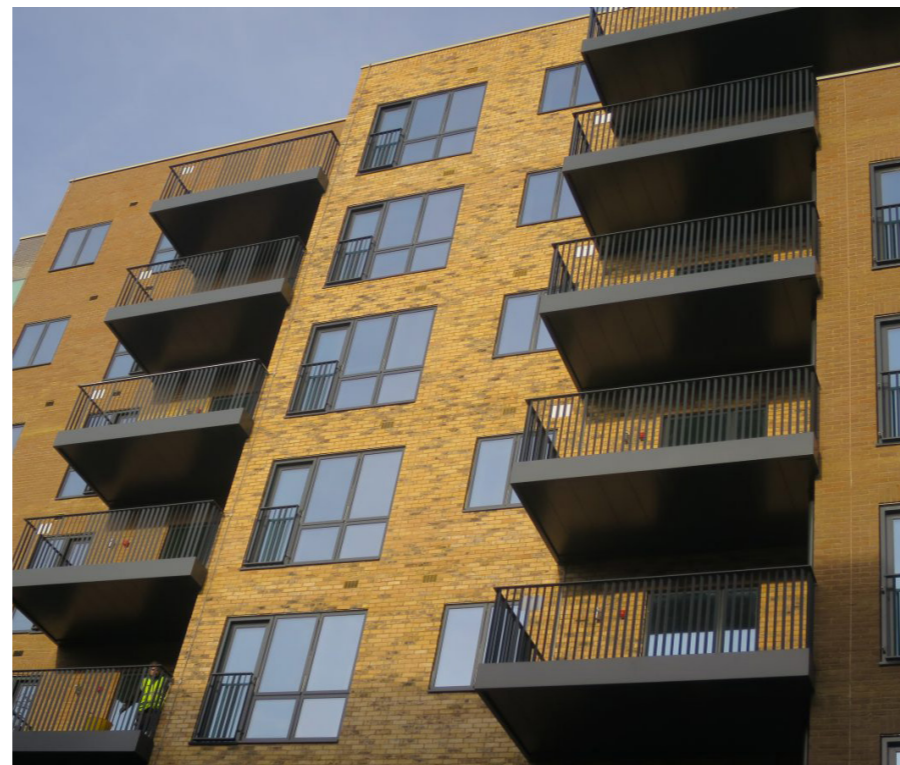
Reference image of uPVC window system



Reference image of roof tiles



Reference image of uPVC window system in grey



Reference image of balcony system by Sapphire as example



Reference image of balcony system by Sapphire as example

3.0 Elevations

3.1 Block 1 - Materials & Finishes



Walls

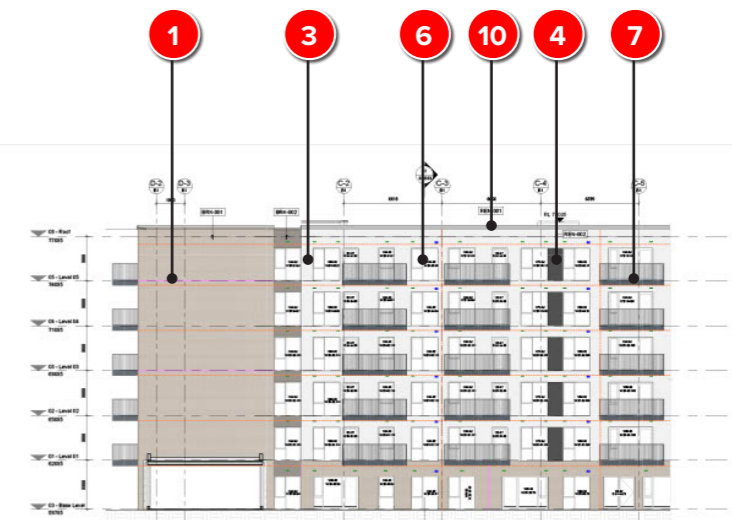
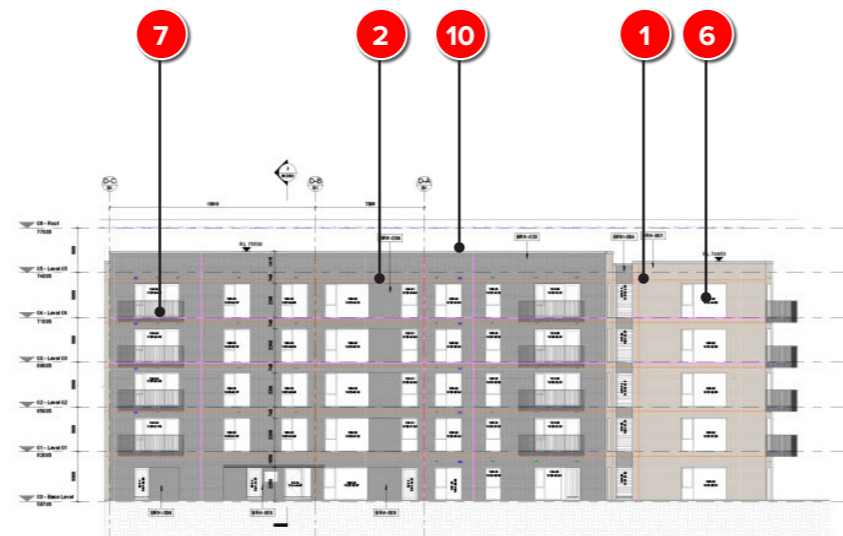
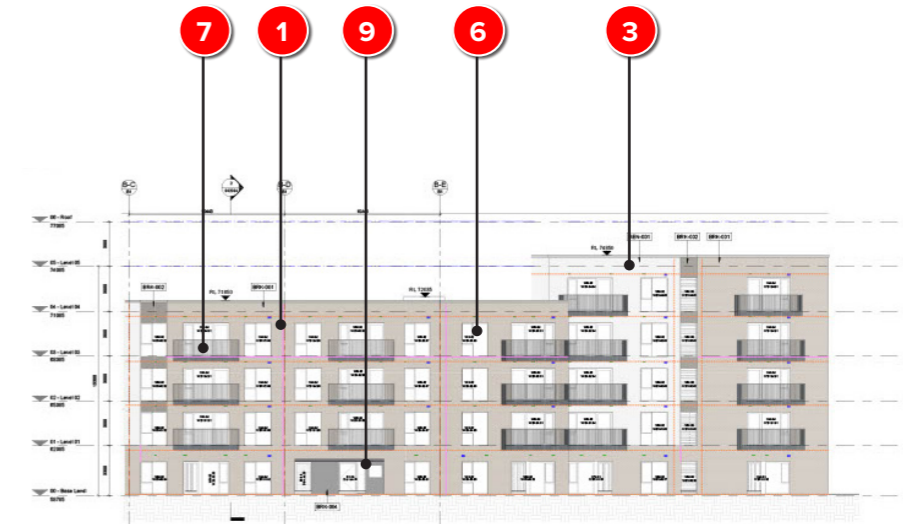
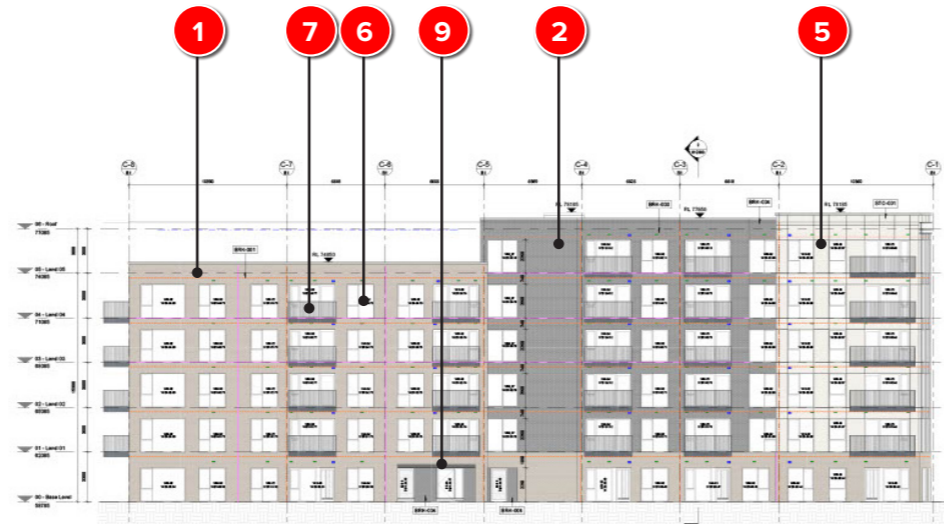
- 1 Buff Brick
- 2 Dark Brickwork
- 3 Light Coloured Render
- 4 Dark Coloured Render
- 5 Light Coloured Stone Cladding

Windows

- 6 Grey Windows
- 7 Window Sills

Balconies / Canopies

- 8 Grey Balconies
- 9 Canopies
- 10 Coping



Light Buff Brick



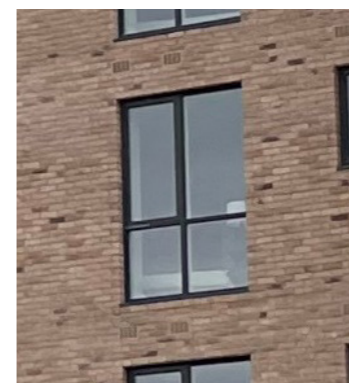
Dark Brickwork



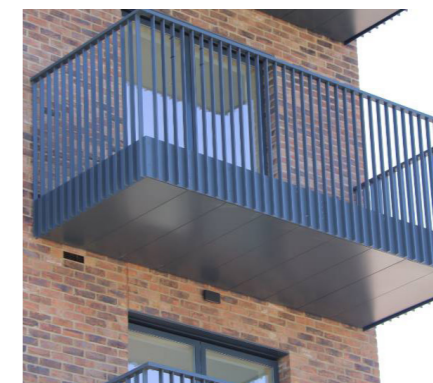
Light Coloured Render



Dark Coloured Render



Grey Windows



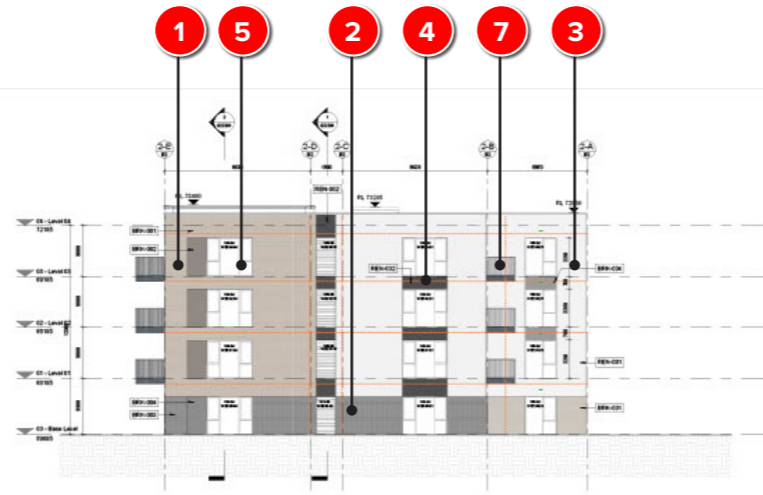
Grey Balconies



Canopies

3.0 Elevations

3.2 Block 2 & 3 - Materials & Finishes



Walls

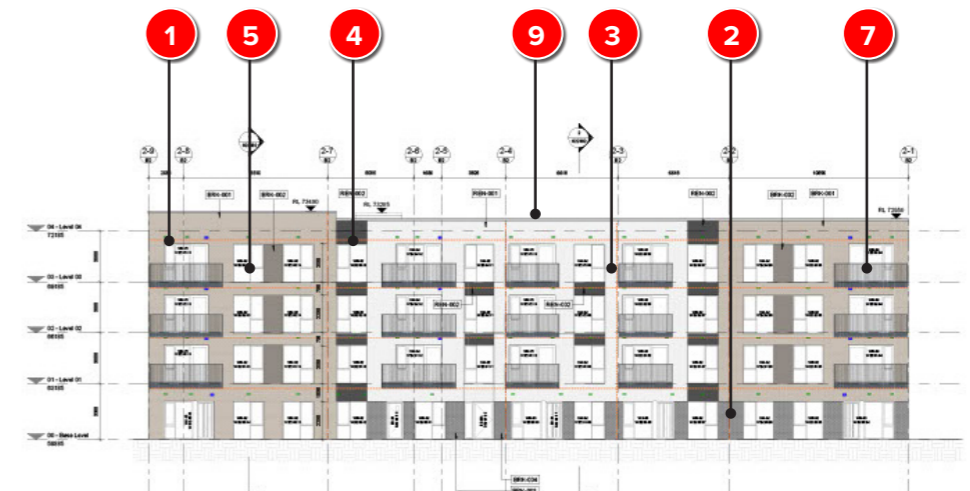
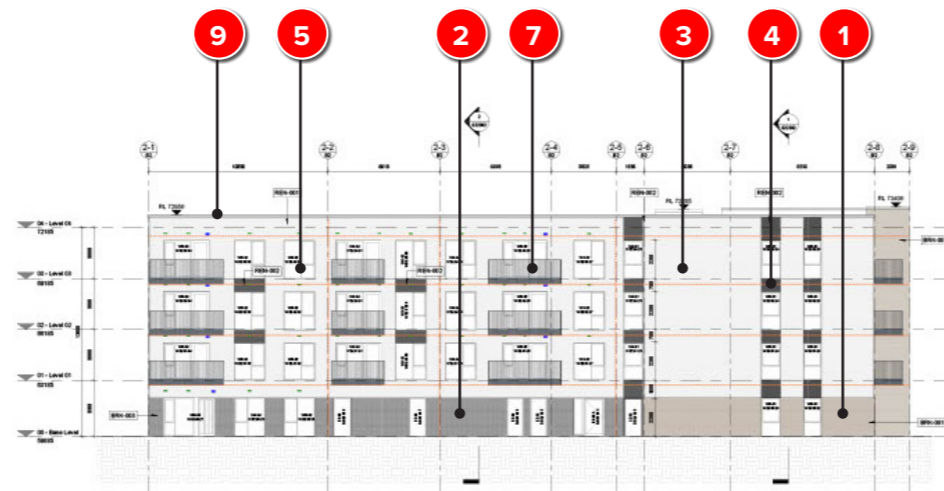
- 1 Buff Brick
- 2 Dark Brickwork
- 3 Light Coloured Render
- 4 Dark Coloured Render

Windows

- 5 Grey Windows
- 6 Window Sills

Balconies / Canopies

- 7 Grey Balconies
- 8 Canopies
- 9 Coping



Light Buff Brick



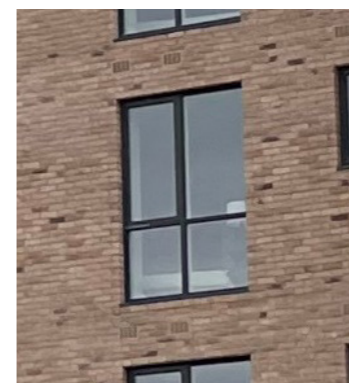
Dark Brickwork



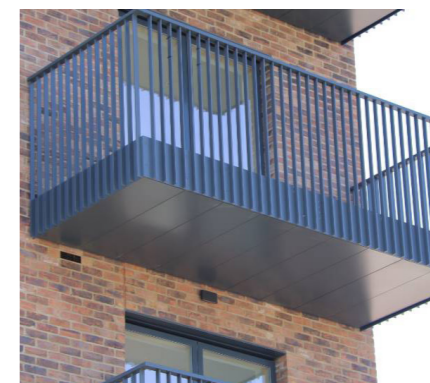
Light Coloured Render



Dark Coloured Render



Grey Windows



Grey Balconies



Canopies

3.0 Elevations

3.3 Local Node - Materials & Finishes



Walls

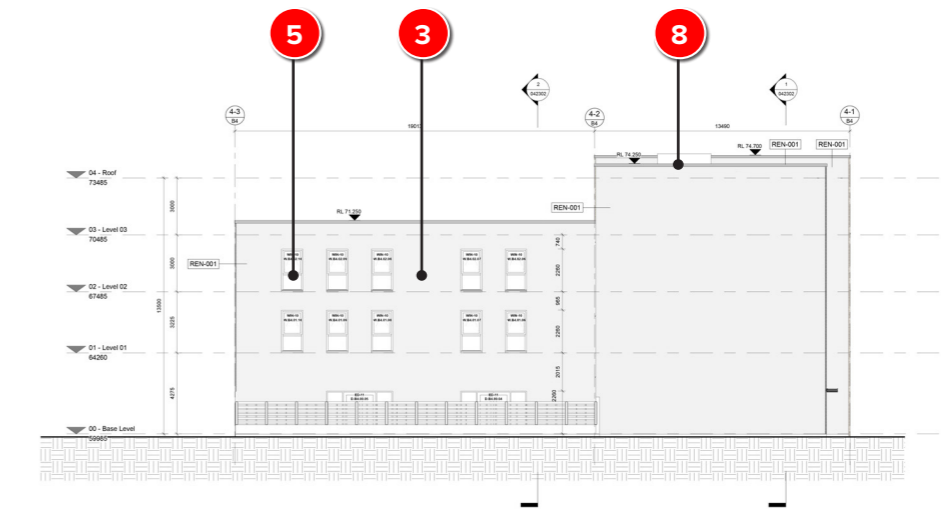
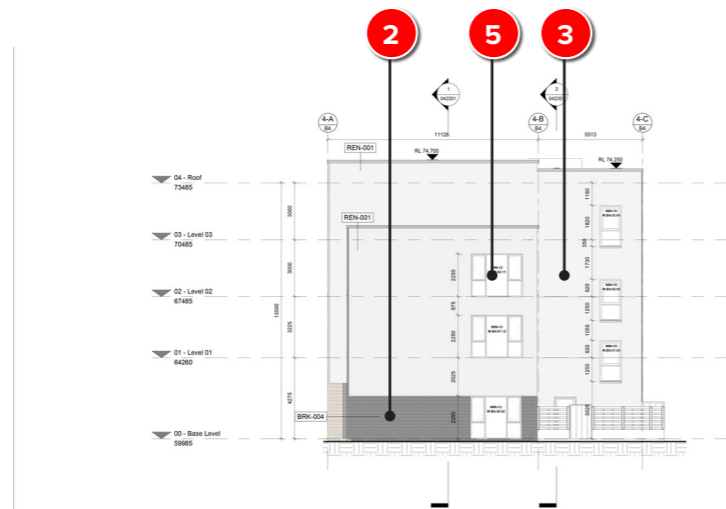
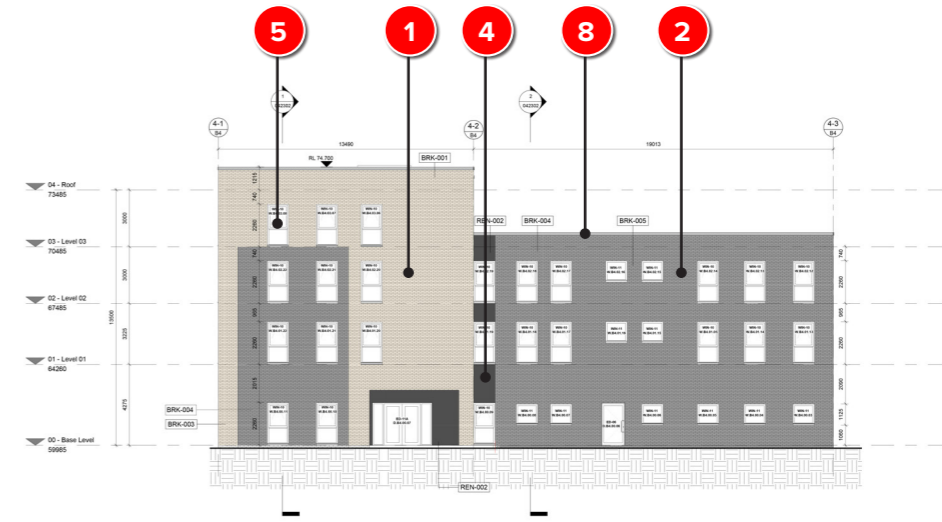
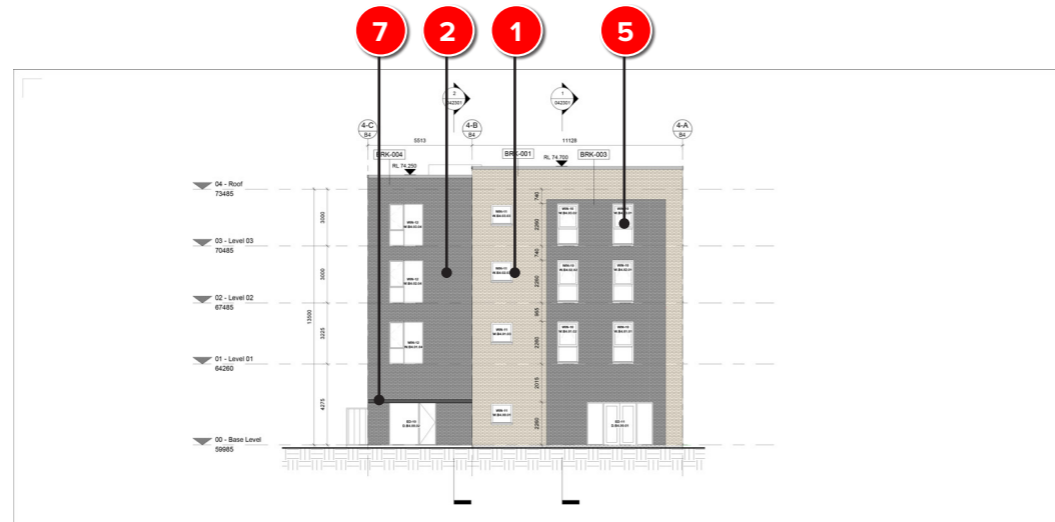
- 1 Light Buff Brick
- 2 Dark Brickwork
- 3 Light Coloured Render
- 4 Dark Coloured Render

Windows

- 5 Grey Windows
- 6 Window Sills

Canopies

- 7 Canopies
- 8 Coping



Light Buff Brick



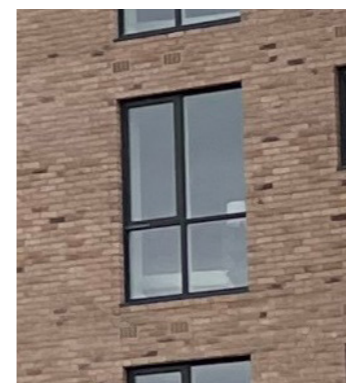
Dark Brickwork



Light Coloured Render



Dark Coloured Render



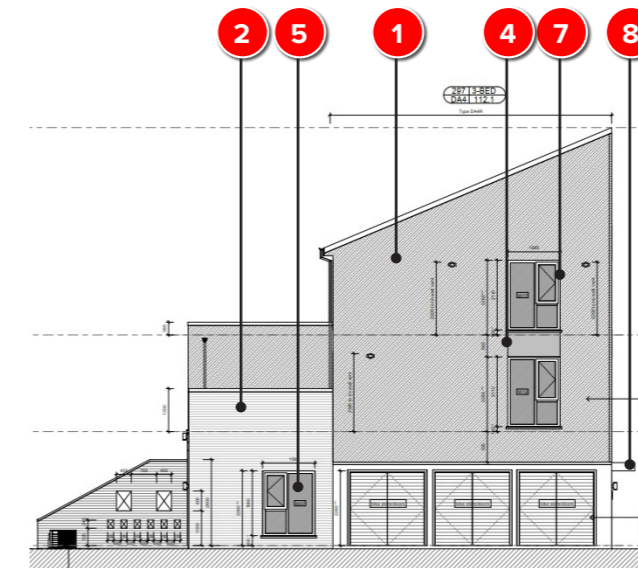
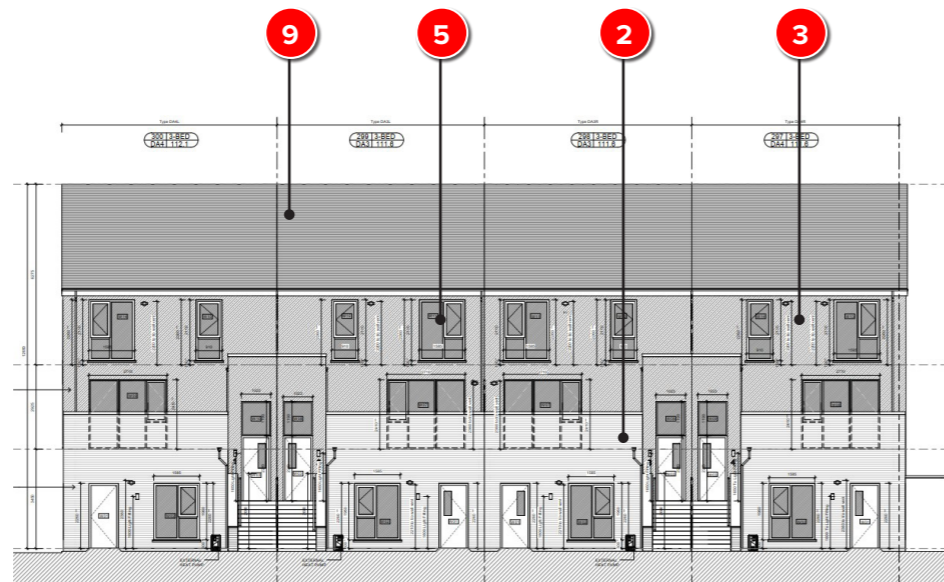
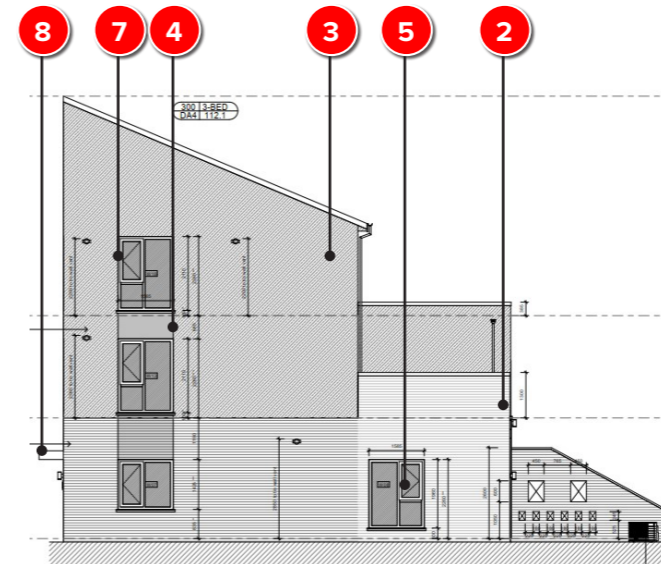
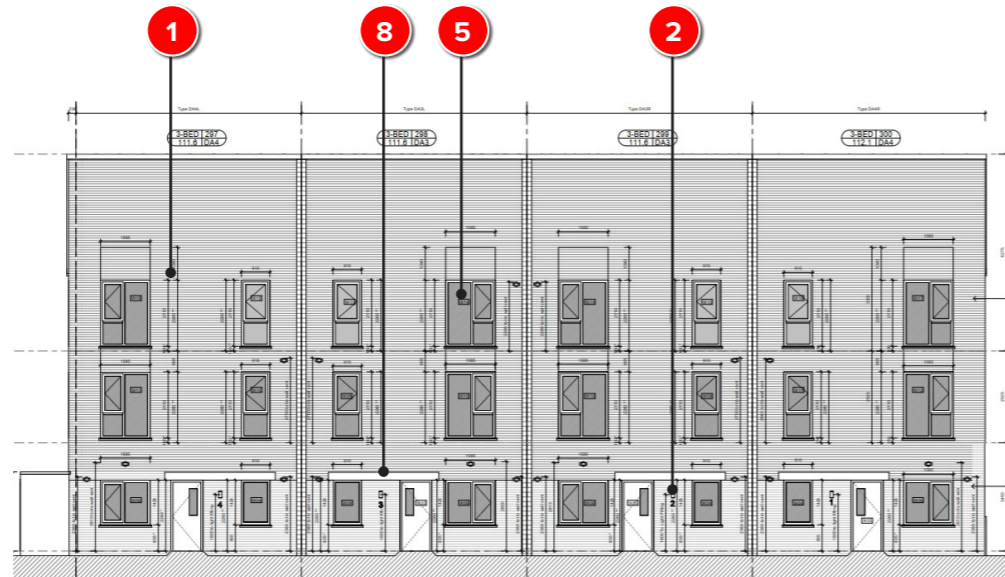
Grey Windows



Canopies

3.0 Elevations

3.4 Duplex Type 01 - Materials & Finishes



Walls

- 1 Light Buff Brick
- 2 Dark Brickwork
- 3 Light Coloured Render
- 4 Dark Coloured Render

Windows

- 5 Grey Windows
- 6 Window Sills
- 7 Opaque Glazing

Balconies / Canopies

- 8 Entrance Canopies

Roof Finishes

- 9 Roof Tiles



Light Buff Brick



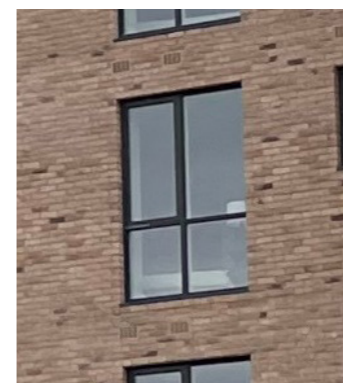
Dark Brickwork



Light Coloured Render



Dark Coloured Render



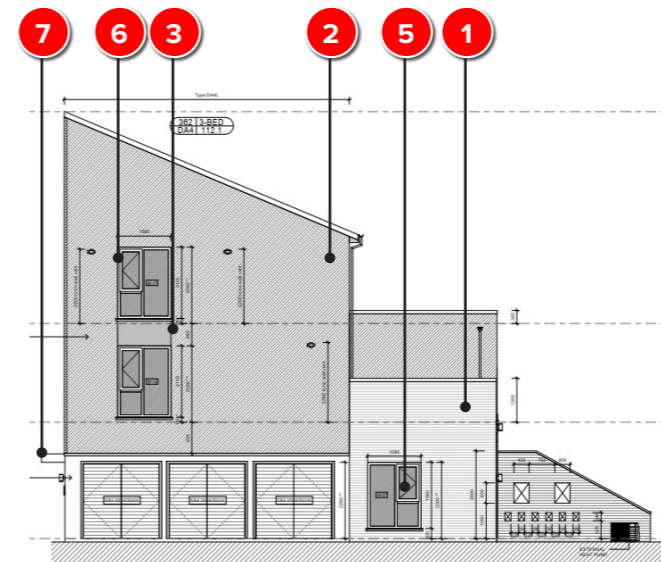
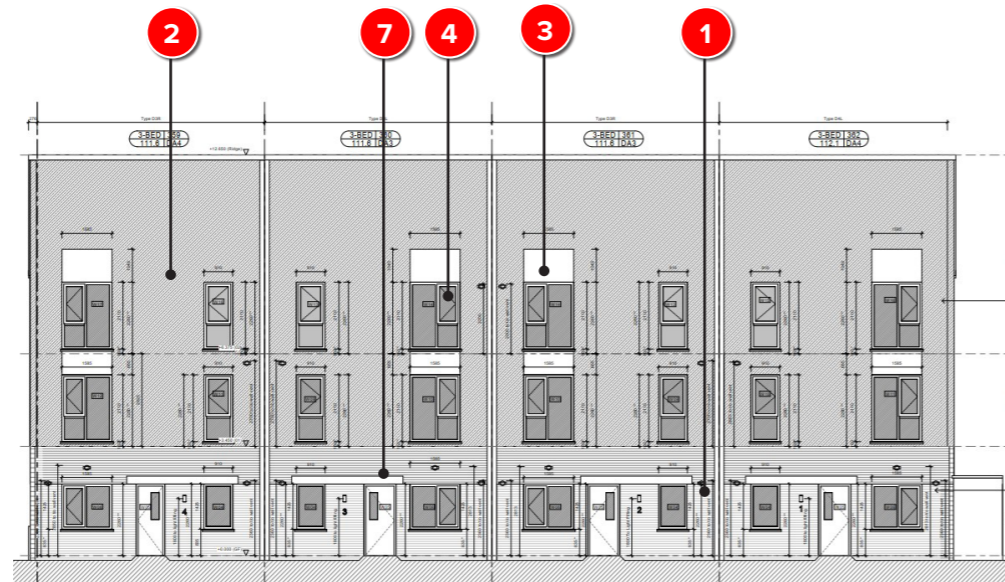
Grey Windows



Canopies

3.0 Elevations

3.5 Duplex Type 02 - Materials & Finishes



Walls

- 1 Light Buff Brick
- 2 Light Coloured Render
- 3 Dark Coloured Render

Windows

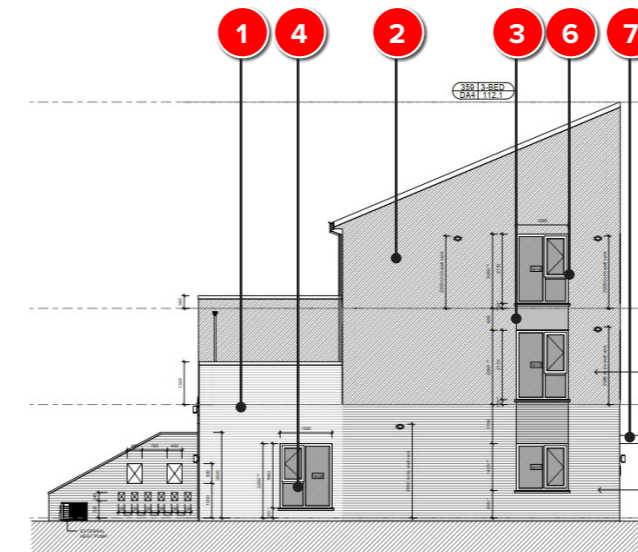
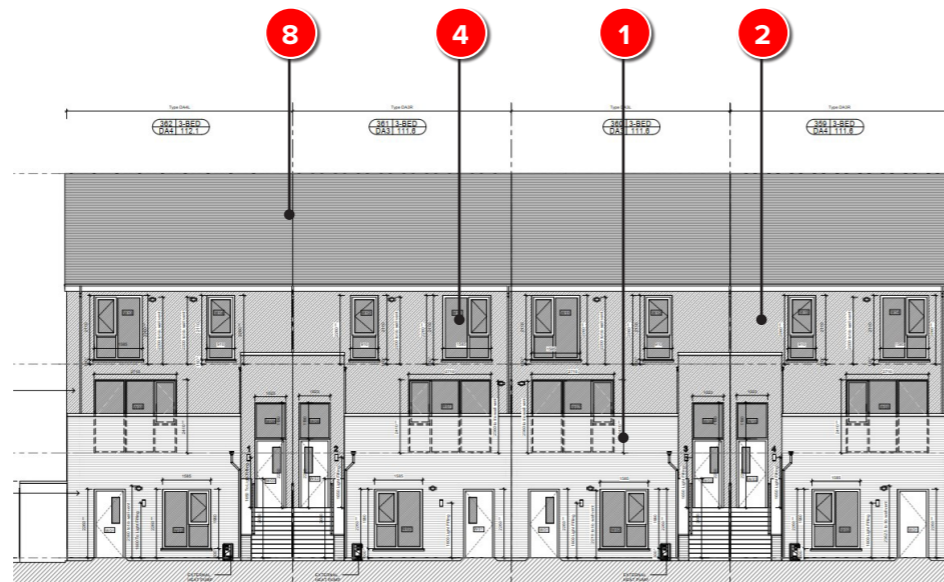
- 4 Grey Windows
- 5 Masonry Window Sills
- 6 Opaque Glazing

Balconies / Canopies

- 7 Entrance Canopies

Roof Finishes

- 8 Roof Tiles



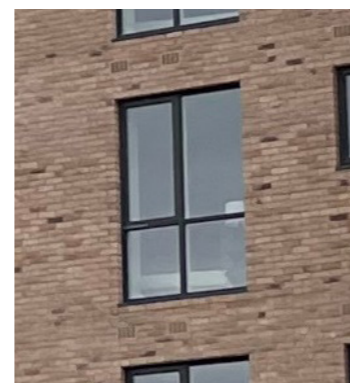
Light Buff Brick



Light Coloured Render



Dark Coloured Render



Grey Windows



Canopies

3.0 Elevations

3.6 Duplex 03 - Materials & Finishes



Walls

- 1 Light Buff Brick
- 2 Light Coloured Render
- 3 Dark Coloured Render

Windows

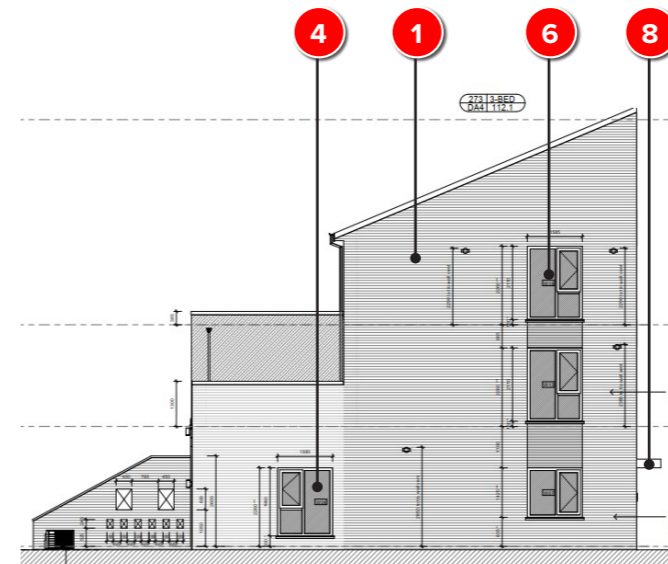
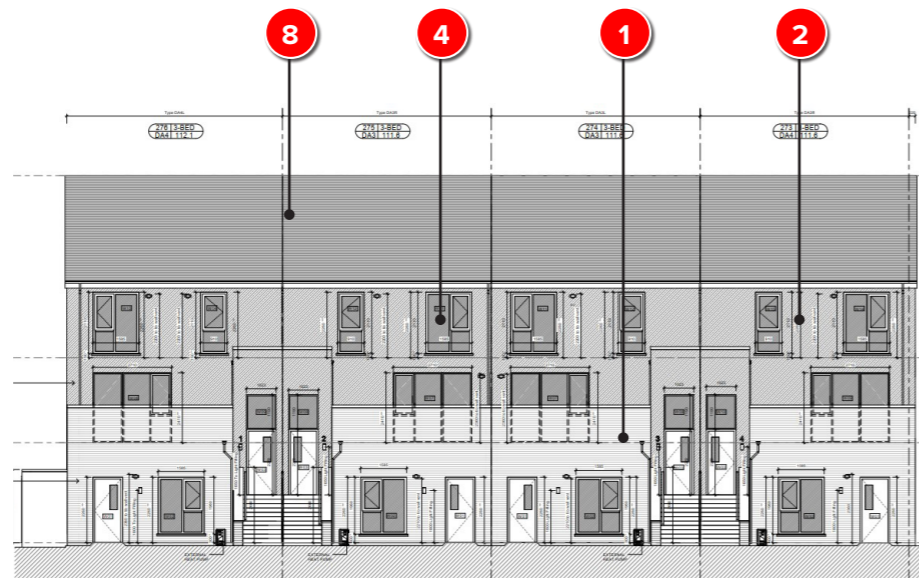
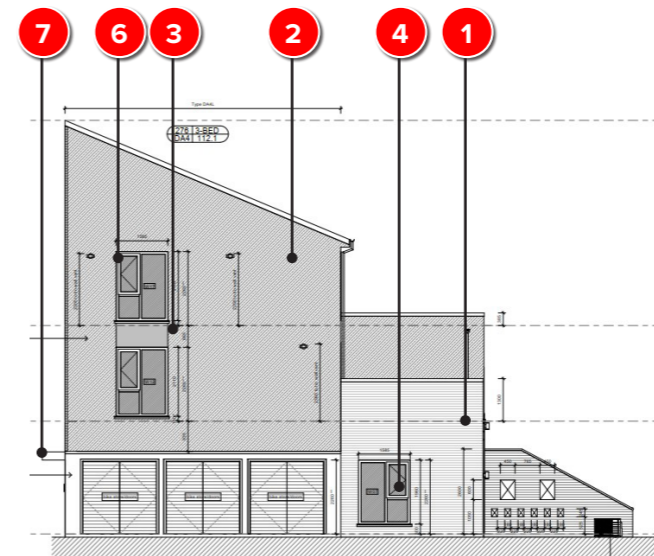
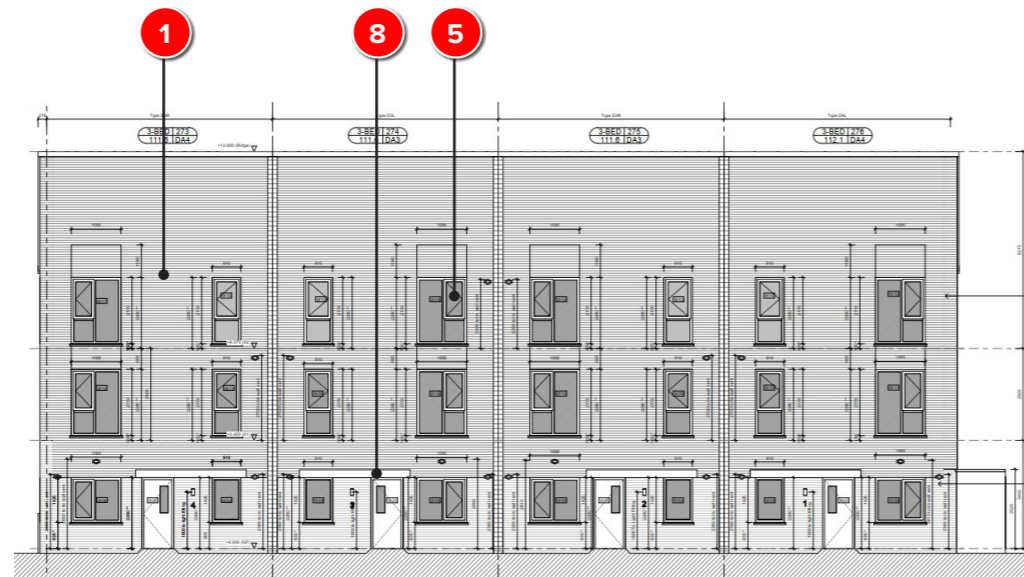
- 4 Grey Windows
- 5 Masonry Window Sills
- 6 Opaque Glazing

Balconies / Canopies

- 7 Entrance Canopies

Roof Finishes

- 8 Roof Tiles



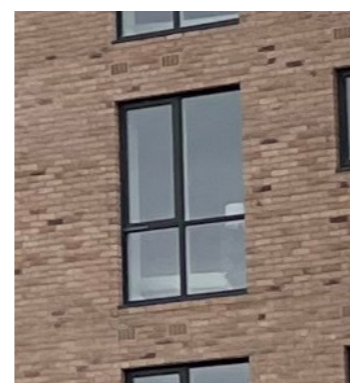
Light Buff Brick



Light Coloured Render



Dark Coloured Render



Grey Windows



Canopies

3.0 Elevations

3.7 Houses - Materials & Finishes



Walls

- 1 Light Buff Brick
- 2 Light Smooth Render

Windows

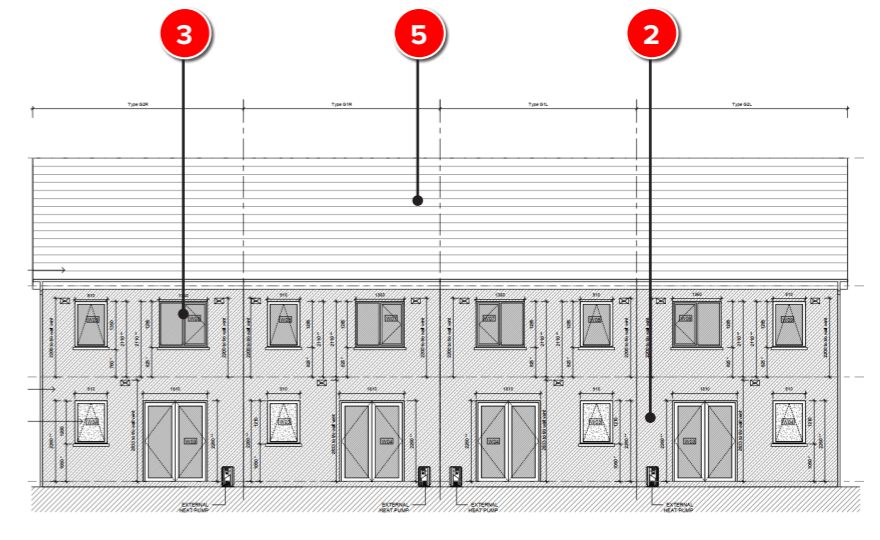
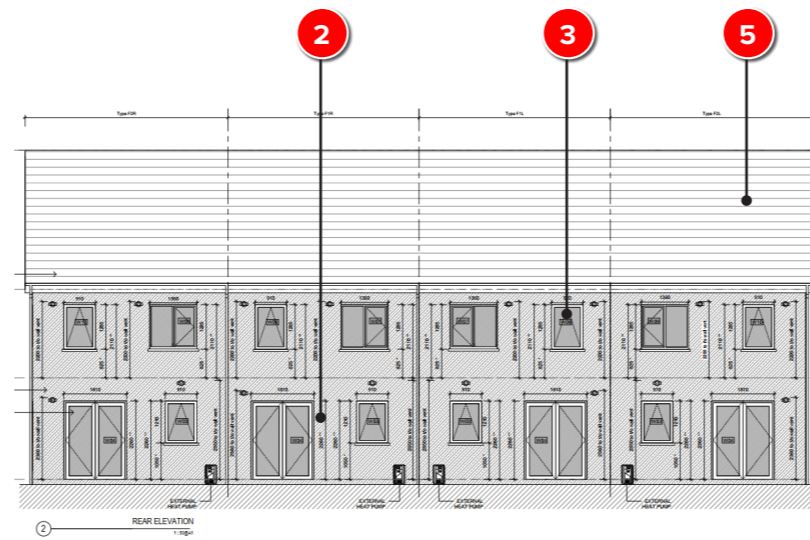
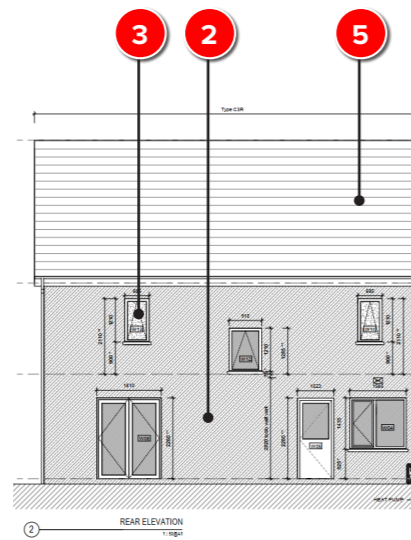
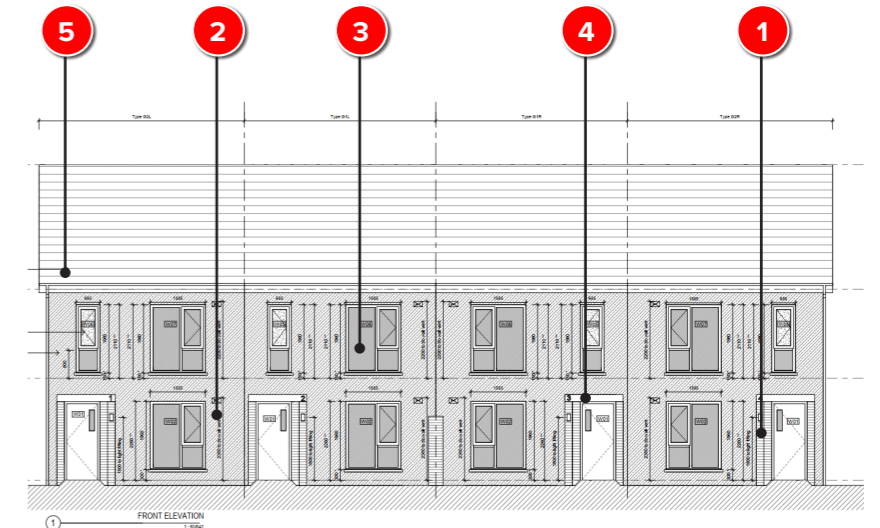
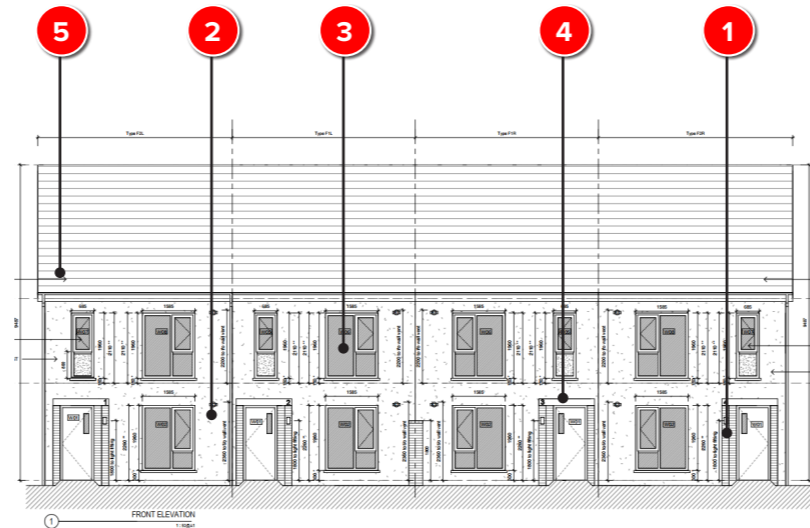
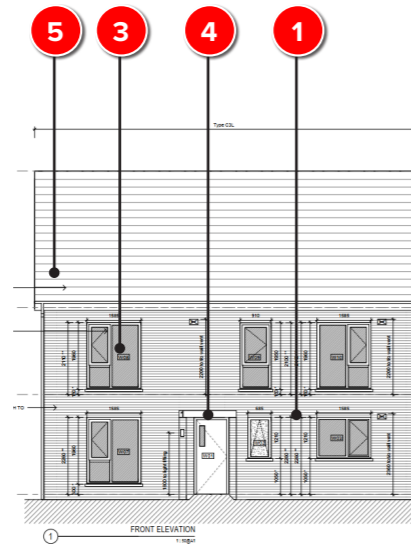
- 3 Grey Windows

Canopies

- 4 Entrance Canopies

Roof Finishes

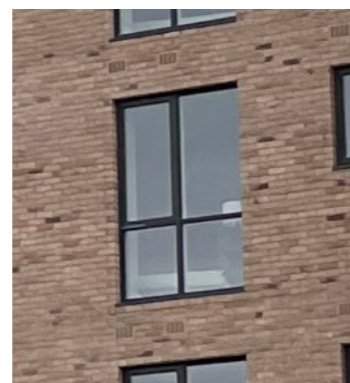
- 5 Roof Tiles



Light Buff Brick



Light Coloured Smooth Render



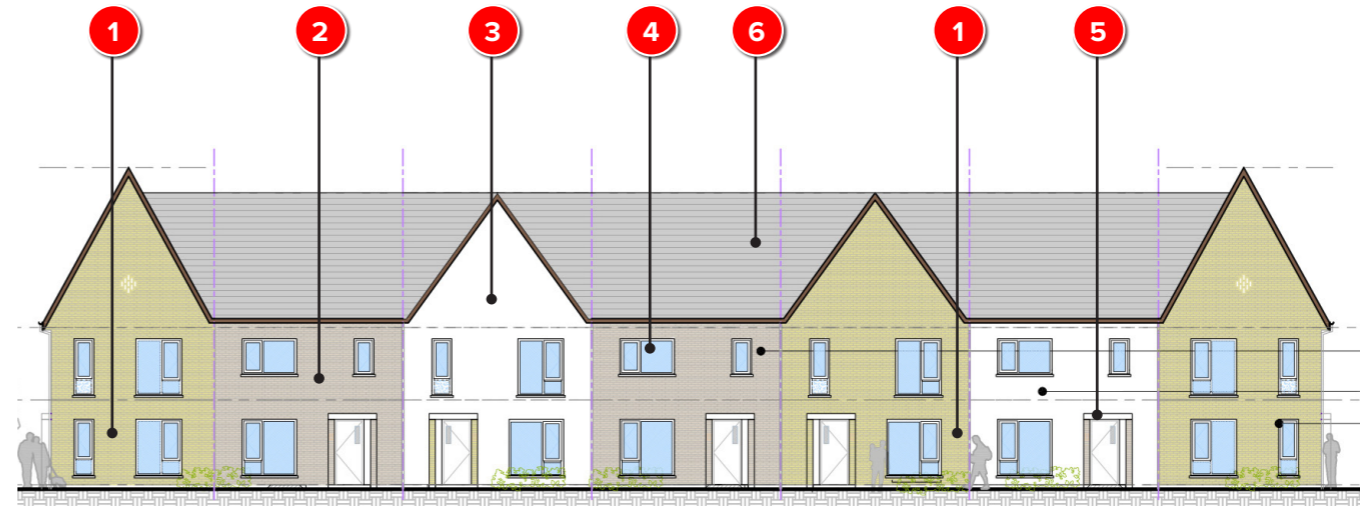
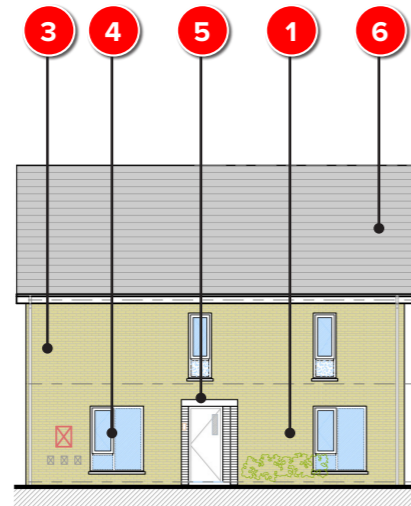
Grey Windows



Entrance Canopies

3.0 Elevations

3.8 Fine Urban Grain Houses - Materials & Finishes



Walls

- 1 Light Buff Brick
- 2 Dark Brickwork
- 3 Light Coloured Render

Windows

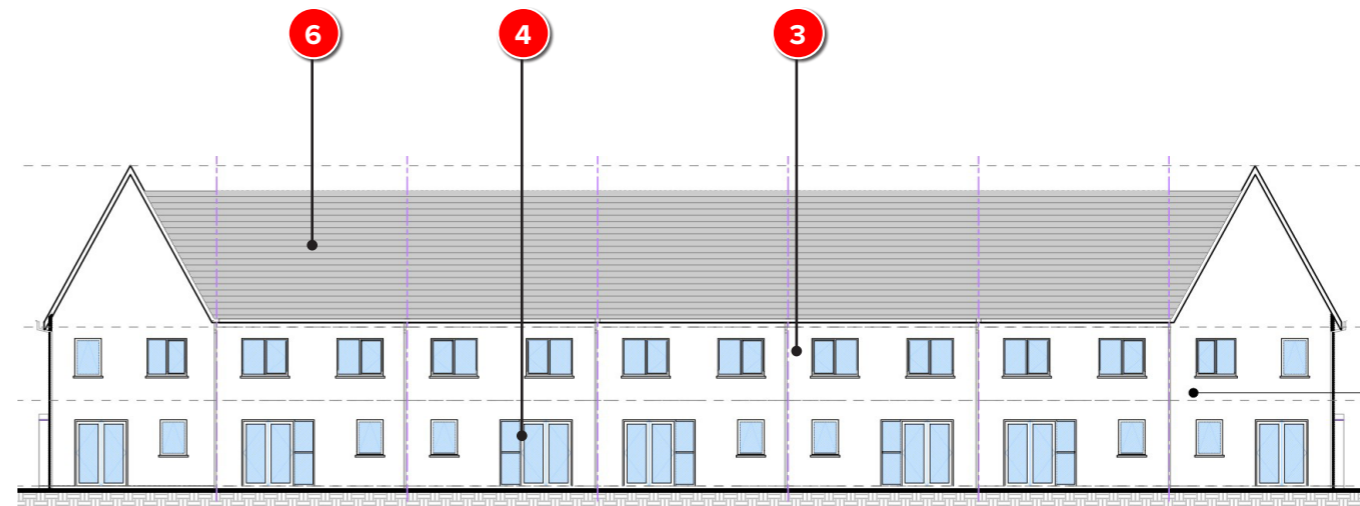
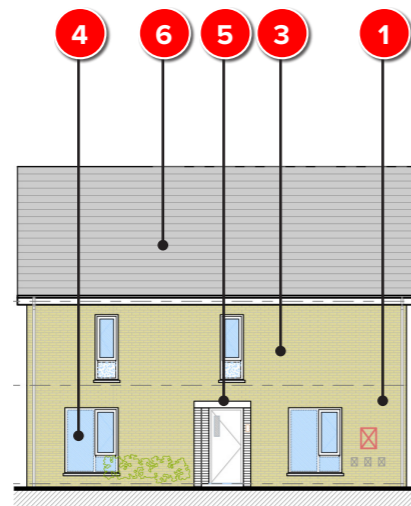
- 4 Grey Windows

Canopies

- 5 Entrance Canopies

Roof Finishes

- 6 Roof Tiles



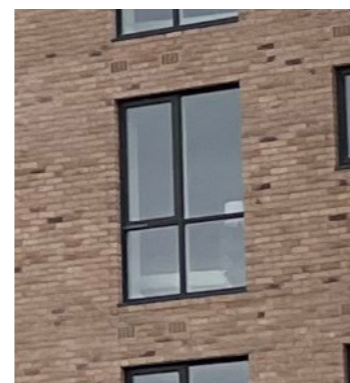
Light Buff Brick



Dark Brickwork



Light Coloured Render



Grey Windows



Entrance Canopies

