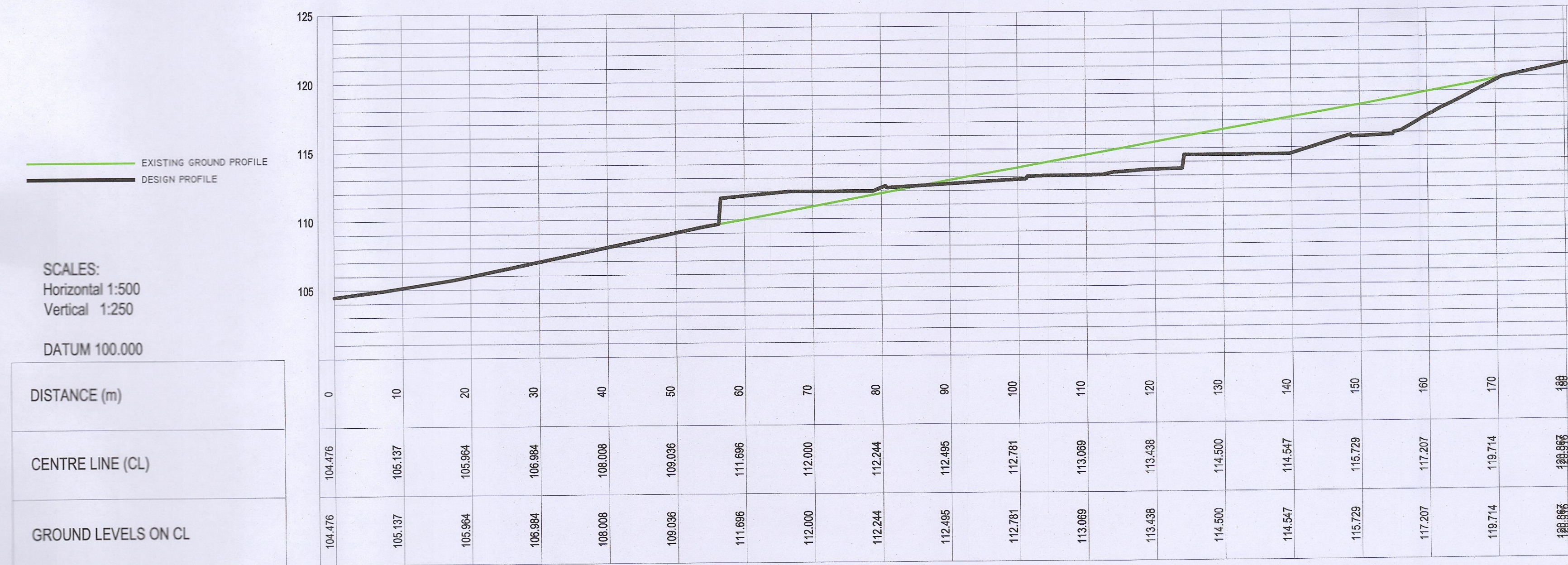
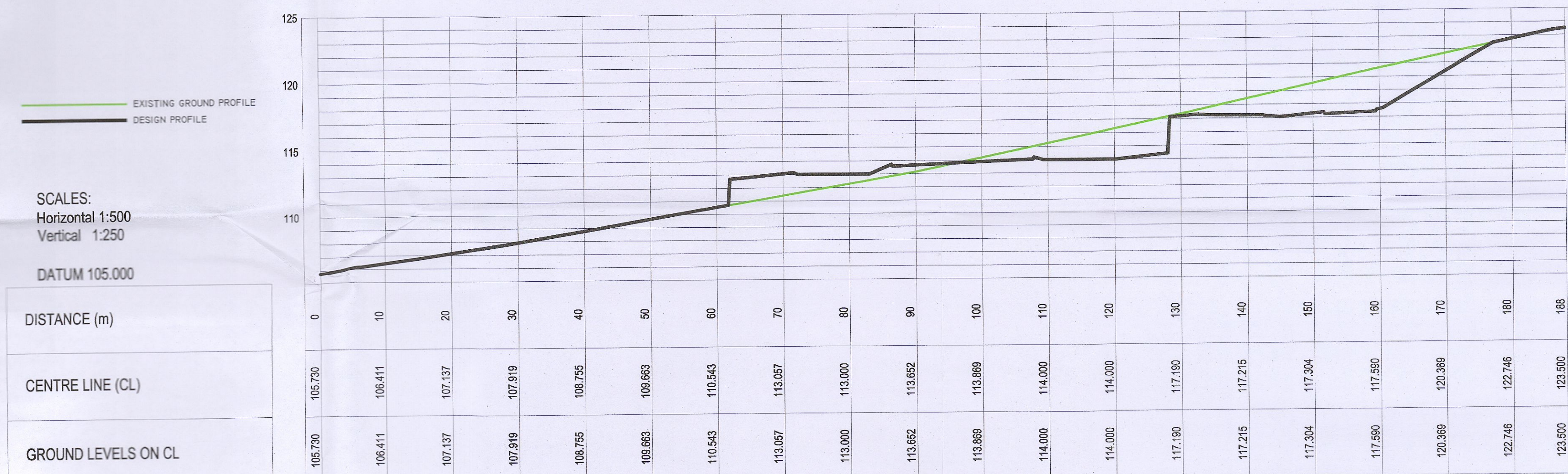


**GENERAL NOTES**

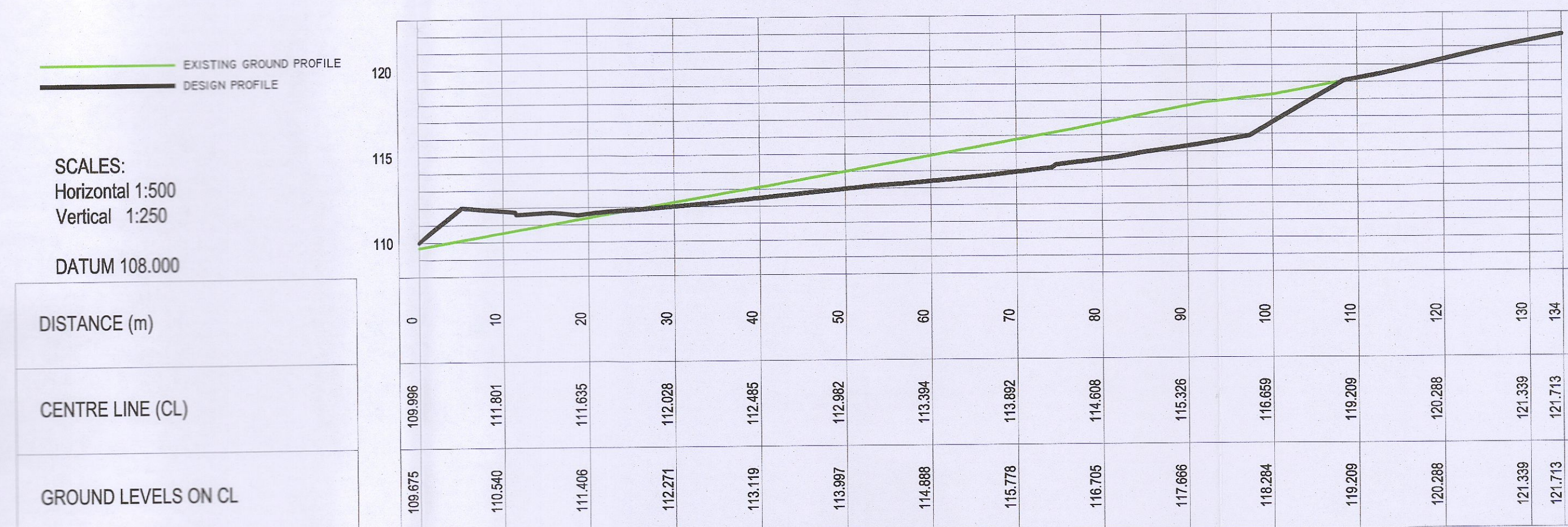
- DO NOT SCALE THIS DRAWING. WORK ONLY TO FIGURED DIMENSIONS.
- FOR ALL RELEVANT NOTES, REFER TO STRUCTURAL AND CIVIL ENGINEERING PERFORMANCE SPECIFICATION.
- ANY DISCREPANCIES ARE TO BE REPORTED TO PINNACLE CONSULTING ENGINEERS IMMEDIATELY.
- THIS DRAWING IS TO BE READ IN CONJUNCTION WITH ALL OTHER RELEVANT ENGINEERS, ARCHITECTS AND SUB-CONTRACTORS DRAWINGS AND DETAILS.



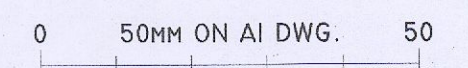
SECTION A-A



SECTION B-B



SECTION C-C



C02	SITE LAYOUT UPDATED	FJVR	SO'R	16 DEC 22
C01	CONSTRUCTION	FJVR	SO'R	24 MAR 22
P01	PLANNING	FJVR	SO'R	JAN 2022
REV	DESCRIPTION	BY	CHK	DATE

CLIENT  
**CAPAMI LTD**

PROJECT  
**OLDCOURT  
OCIL 4**

DRAWING TITLE  
**SECTION PROFILES**

**PINNACLE**  
CONSULTING ENGINEERS

GROSVENOR COURT,  
67A PATRICK STREET,  
DUN LAOGHAIRE,  
COUNTY DUBLIN  
IRELAND. TELEPHONE: +353 1231 1041  
WELWYN GARDEN CITY | NORWICH | LONDON | THE HAGUE

DRAWING STATUS			
<b>CONSTRUCTION</b>			
SCALE @ A1	DATE	DRAWN BY	CHECKED
1:500	JAN '22	FJVR	SO'R
DRG NO.	REVISION		
PI90302-209	C02		

REF: PI90602  
COPYRIGHT PINNACLE