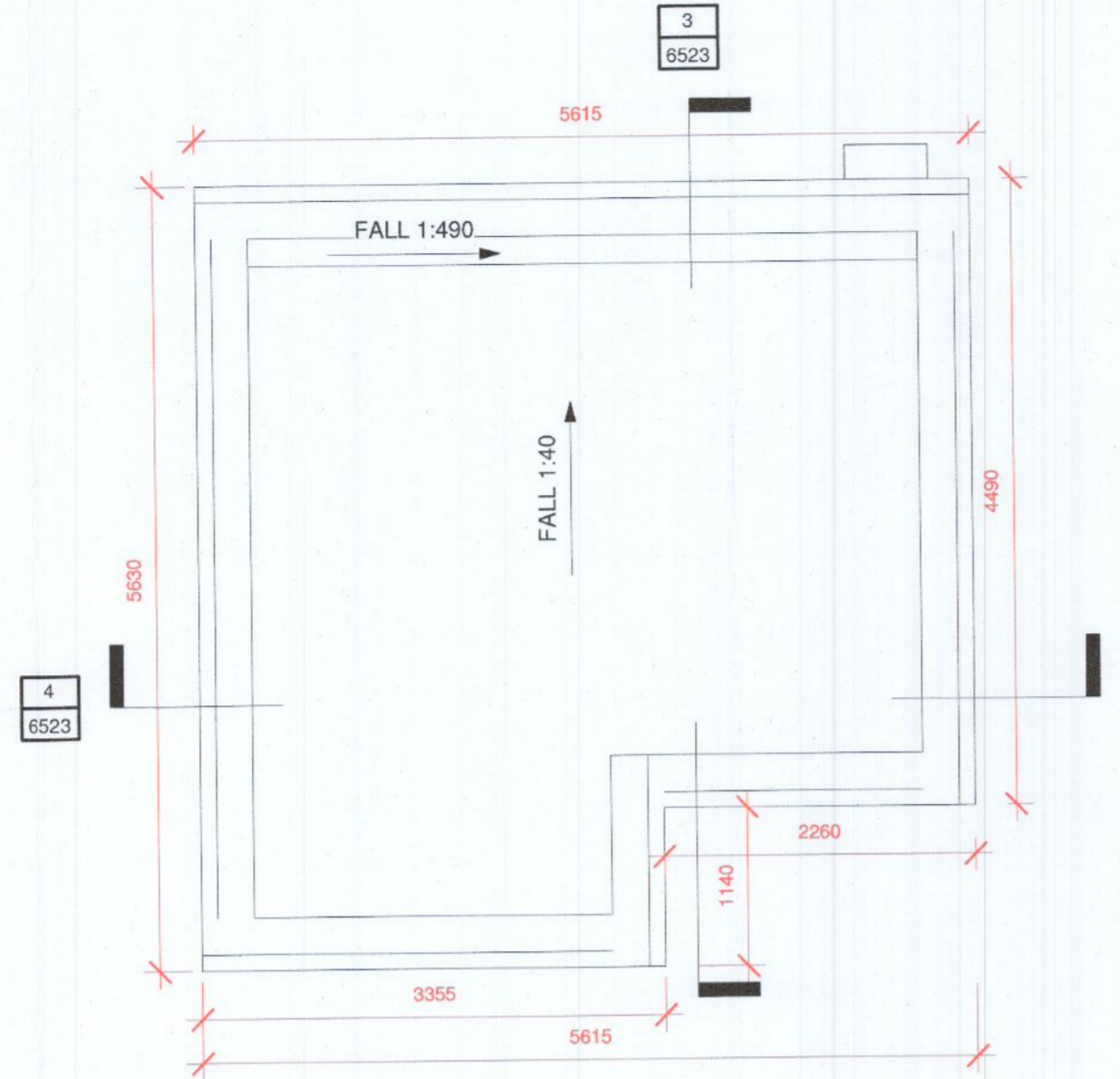
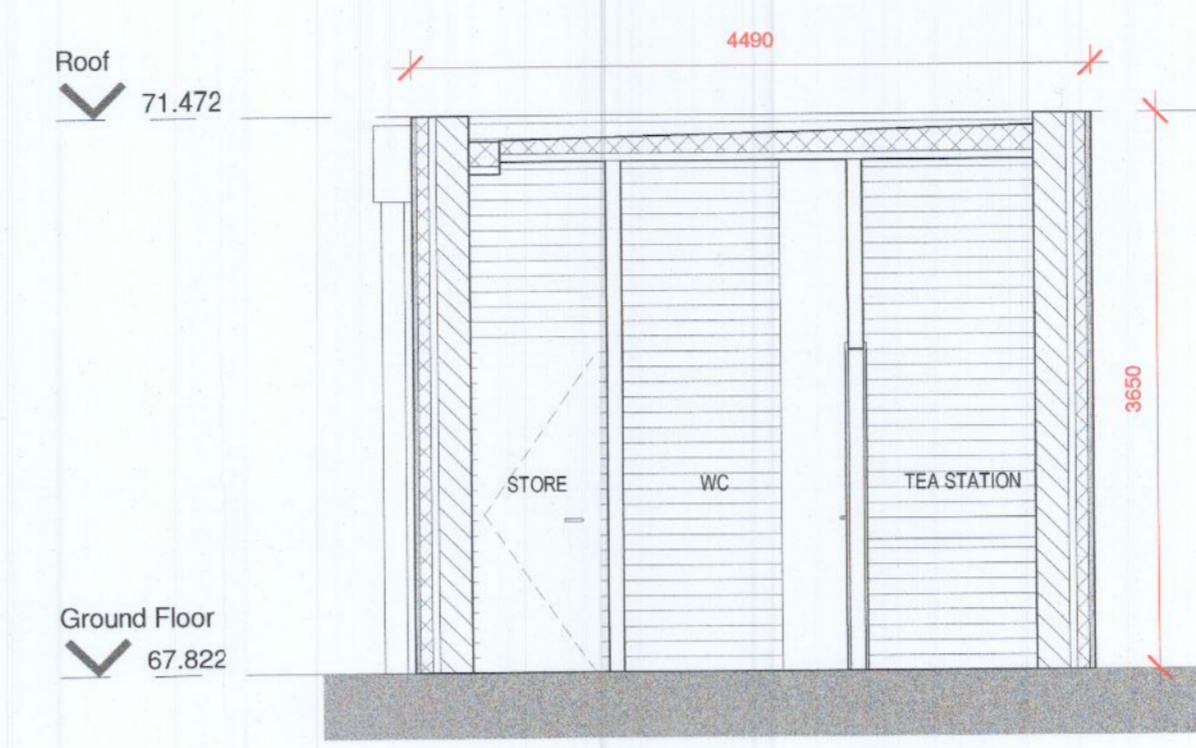


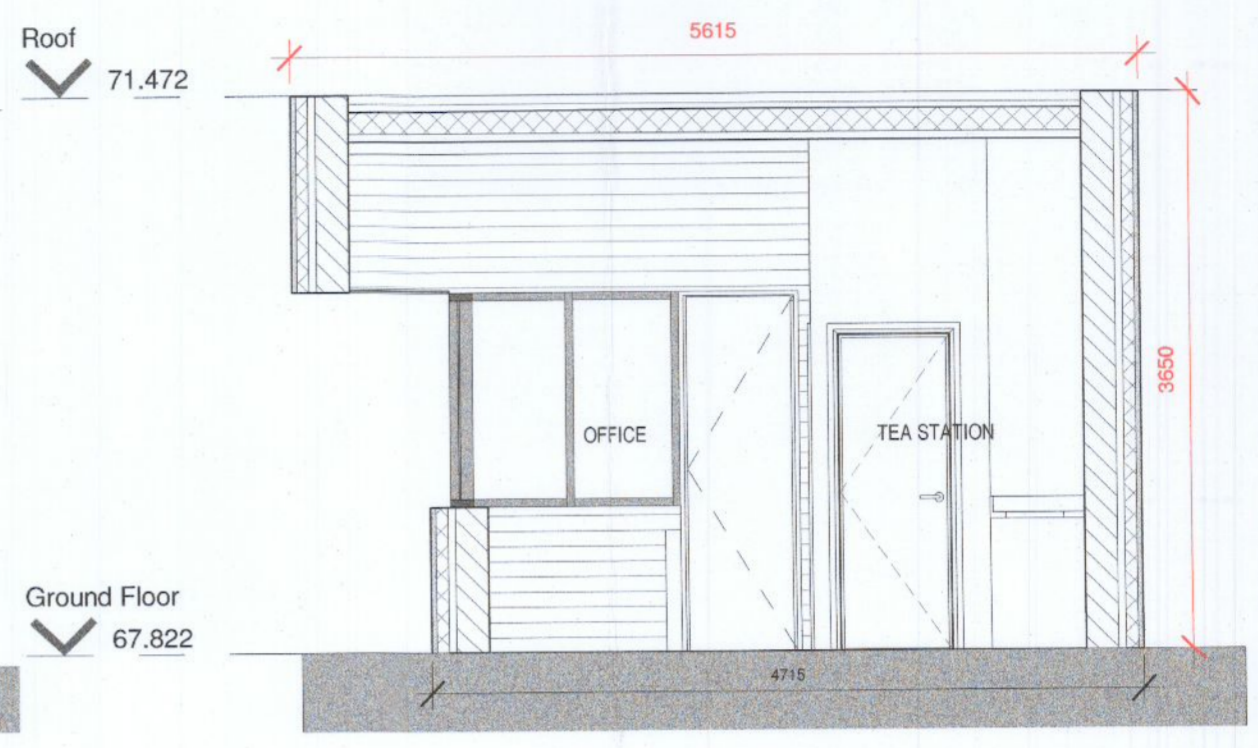
1 6523 Ground Floor Plan 1:50



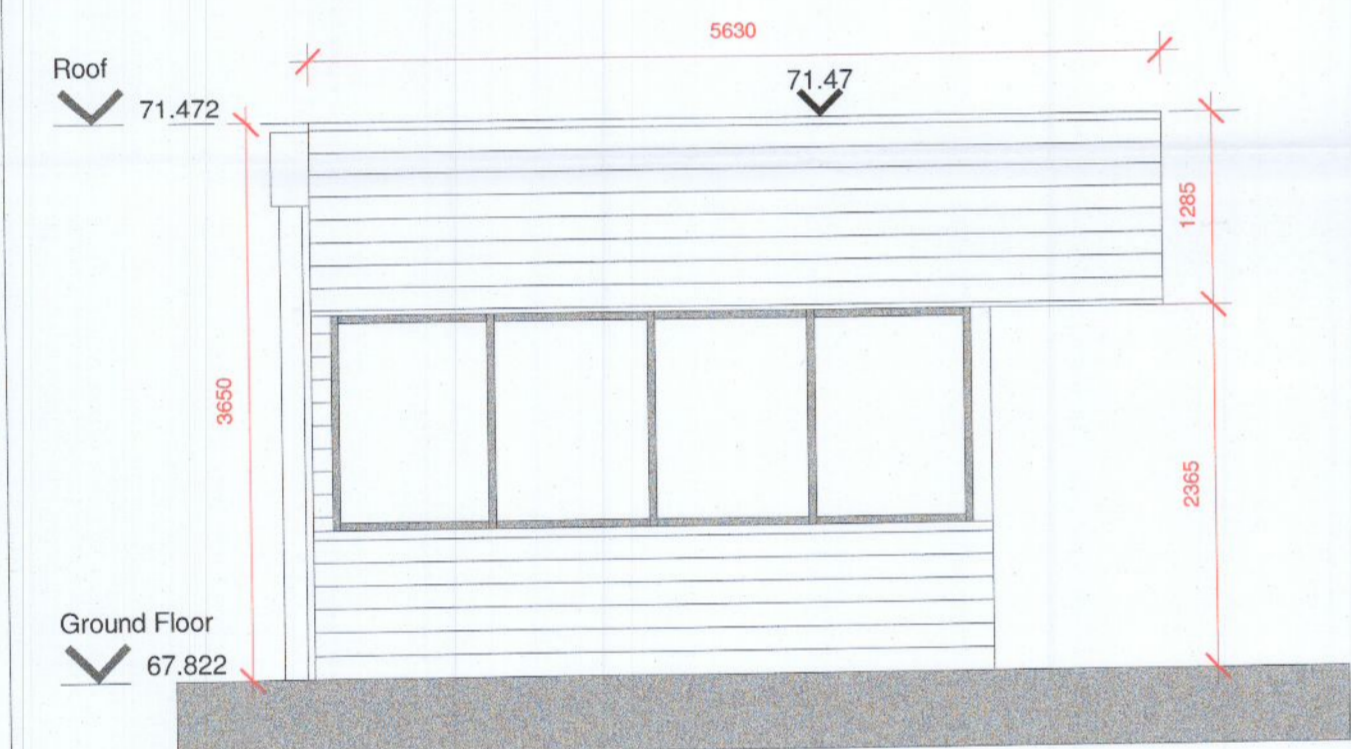
2 6523 Roof Plan 1:50



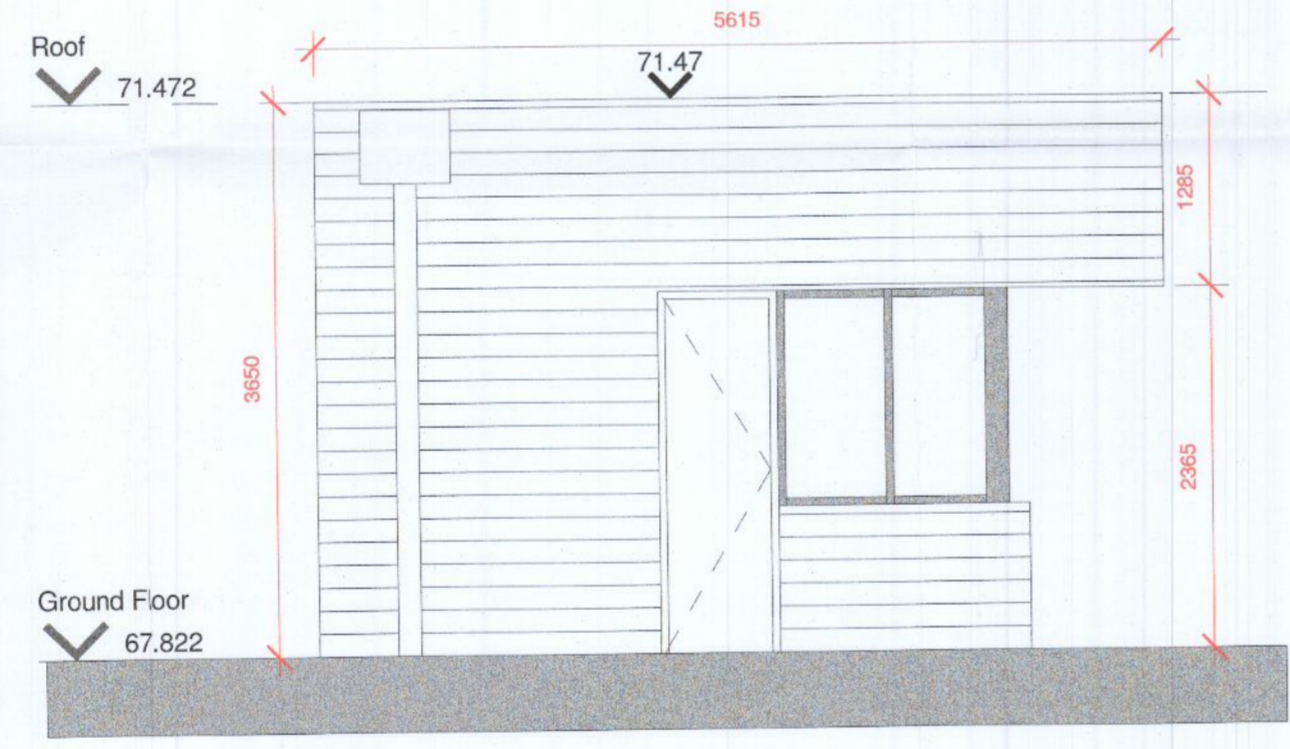
3 6523 Section 1 1:50



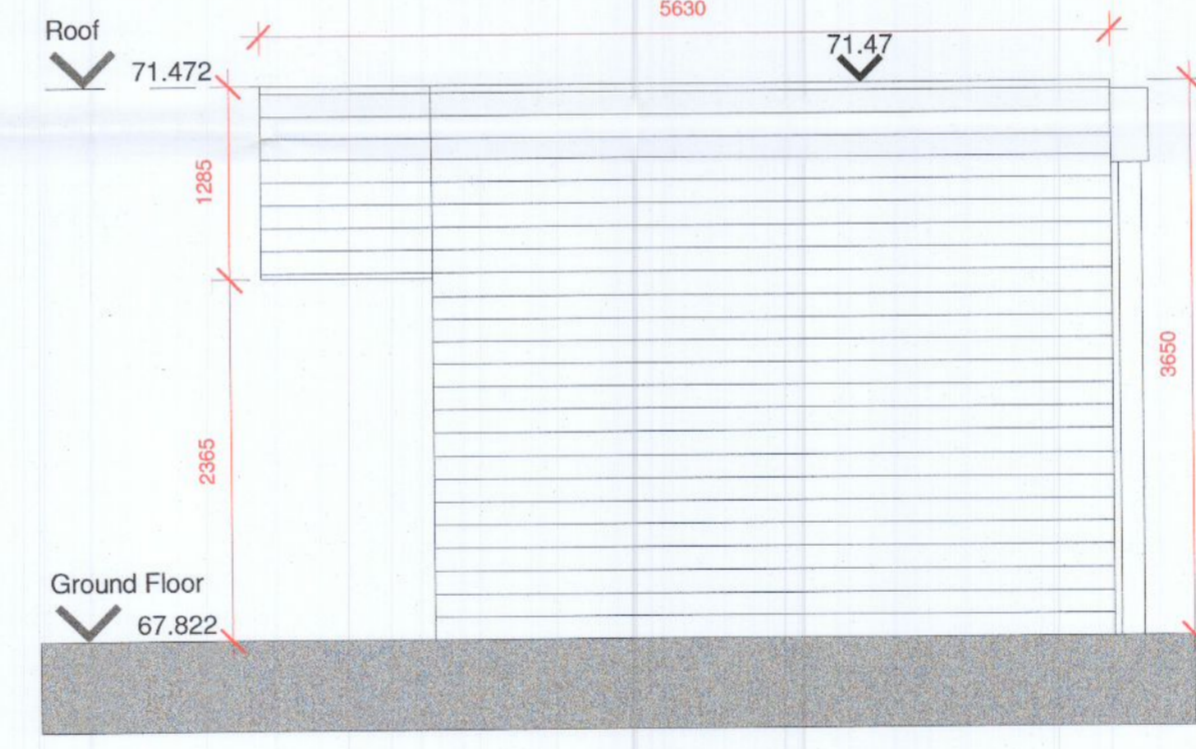
4 6523 Section 2 1:50



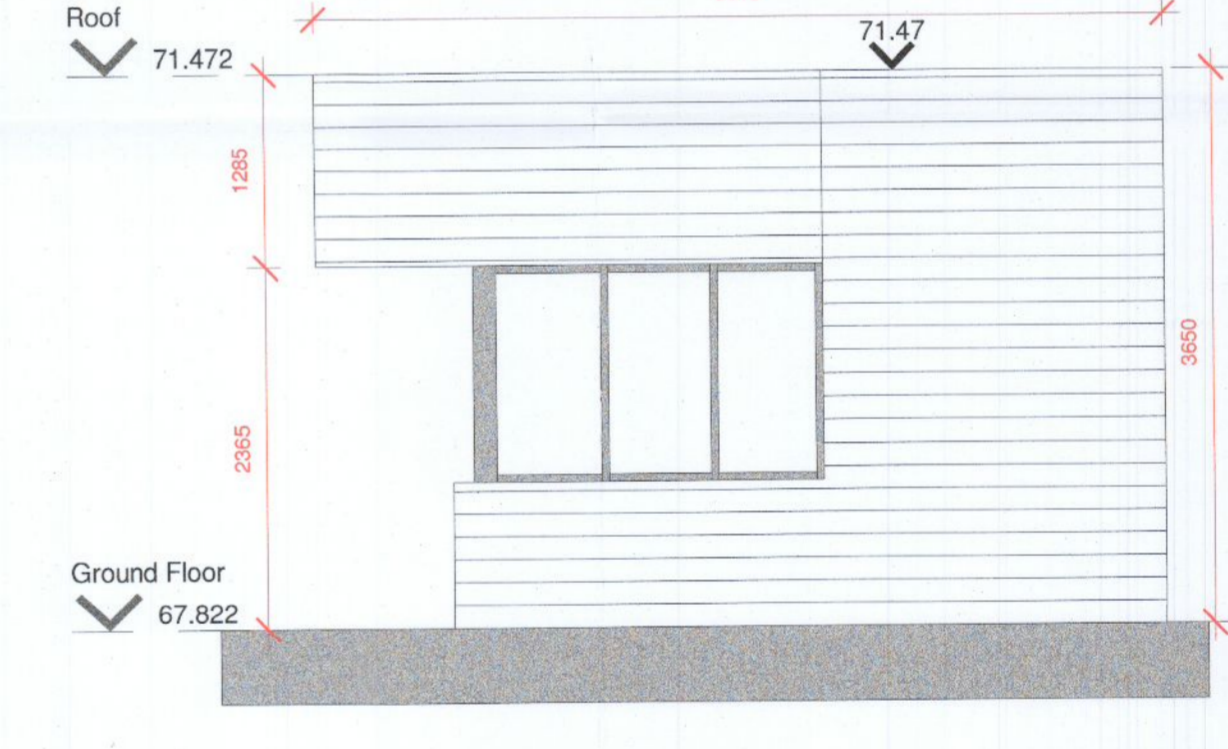
5 6523 West Elevation 1:50



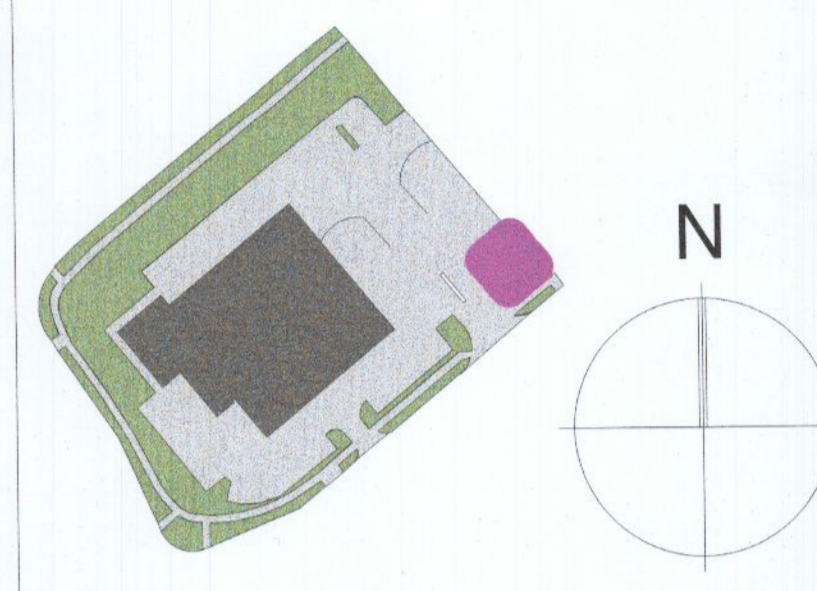
6 6523 North Elevation 1:50



8 6523 East Elevation 1:50



7 6523 South Elevation 1:50



KEYNOTES

LEGEND

**NOTES**  
EXISTING SECURITY HUT - NO CHANGES PROPOSED

REV.	DATE	ISSUED FOR PLANNING	DESCRIPTION	KTA	KTA	CHK	AP
P1	16.12.2022	ISSUED FOR PLANNING		KTA	KTA		

ANY UNAUTHORIZED USE OR REPRODUCTION OF THIS DOCUMENT IN WHOLE OR PART IS PROHIBITED. DELETE THIS DOCUMENT IF YOU HAVE RECEIVED IT IN ERROR.

MECHANICAL & ELECTRICAL ENGINEER CIVIL & STRUCTURAL ENGINEER

**Clifton Scannell Emerson Associates**  
 Clifton Scannell Emerson Associates Limited  
 Consulting Engineers, 2017 Lee The Heights, Ballybrannagh, Dublin 15  
 T: +353 1 2805000 E: info@cses.ie www.cses.ie

**KAVANAGH TUITE ARCHITECTS**  
 7 FENNELL HILLS CLONMELLEN ROAD DUBLIN 15 IRELAND  
 T: +353 1 2805000 WWW.KAVANAGHTUITE.COM

**CUNDELL**  
 Cundell Engineering Limited  
 110 St. James's Street, Dublin 8  
 T: +353 1 2805000 E: info@cundell.com, W: www.cundell.com

**BB7**  
 BB7 Fire & Security Consulting  
 24/25, Mount Pleasant Business Centre, Glasnevin, Dublin 9  
 T: +353 1 907 3022 E: info@bb7.ie www.bb7.ie

PROJECT: UNIT 1, M50 BUSINESS PARK  
 TITLE: SECURITY HUT DETAILS  
 DRAWING NO.: J2139-KTA-22-XX-DR-A-6523

A1 SCALE: As Indicated AGILE No.: RE P