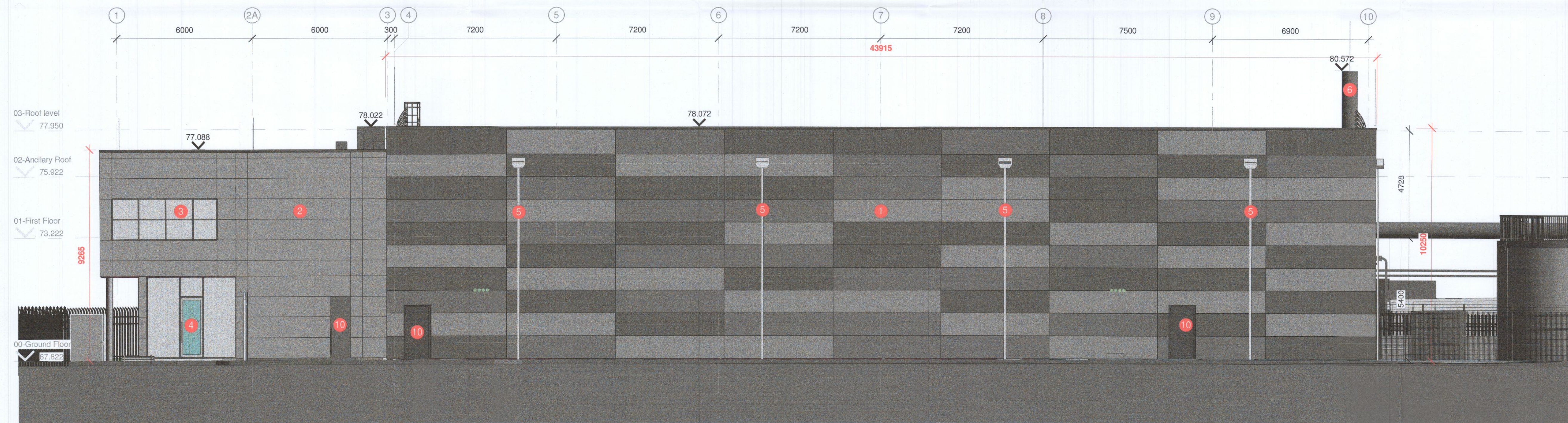


1 6508 Proposed North Elevation  
1:100



2 6508 Proposed South Elevation  
1:100

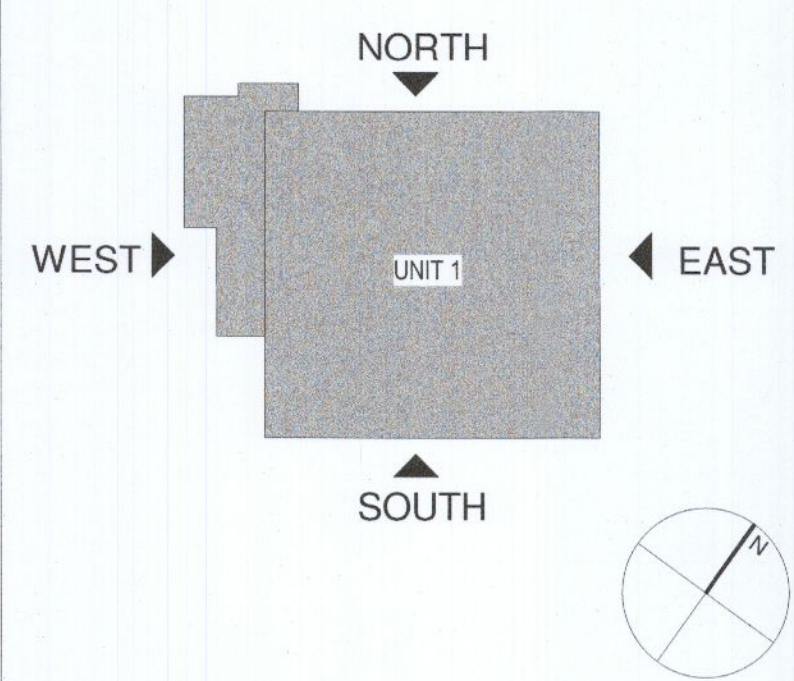
LEGEND:

- 1 flat metal cladding panels, horizontally laid - colours - light grey, mid grey, dark grey
- 2 new flat horizontal composite cladding sheets with provision of a new 1100mm parapet - colour of the cladding to match existing admin block cladding
- 3 new double glazed window units - to match existing
- 4 new full height glazed screens with entrance door - to match existing
- 5 aluminium downpipe with hopper head - colour - dark grey
- 6 generator flue finished in polished steel
- 7 aluminium framed double glazed windows
- 8 new glazed entrance door
- 9 insulated sectional door
- 10 New steel door
- 11 new access stairs

NOTES

KEYNOTES

LEGEND



REV.	DATE	DESCRIPTION	KTA	KTA	DRN	ENG	CHK	APP
P1	16.12.2022	ISSUED FOR PLANNING						

ANY UNAUTHORIZED USE OR REPRODUCTION OF THIS DOCUMENT IN WHOLE OR IN PART IS PROHIBITED. DELETE THIS DOCUMENT IF YOU HAVE RECEIVED IT IN ERROR

MECHANICAL & ELECTRICAL ENGINEER CIVIL & STRUCTURAL ENGINEER



ARCHITECT

**KAVANAGH TUITE ARCHITECTS**  
TERMINAL HILLS, CLONSILLA ROAD, DUBLIN D02 Y202 IRELAND  
 T: +353 1 2186500 M: 083 200 2418 E: info@kavanaghtuite.ie

FIRE ENGINEER  
**BB7**  
BB7 Fire & Security Consulting  
 1001, Grand Parade Business Centre, Dunlough  
 Dublin, D18 47D2  
 T: +353 1 907 3222 E: info@bb7.ie www.bb7.ie

SECURITY ENGINEER

**CUNDALL**  
Cundall Engineering Limited  
 7-8 Stephen Green, Dublin  
 T: +353 1 517 1200 E: info@cundall.com W: www.cundall.com

OTHER ENGINEER  
Macro Works Ltd.  
 Ground Floor, Hibernia House,  
 Longhambstown,  
 Ireland  
 D18 E440

PROJECT: UNIT 1, M50 BUSINESS PARK

TITLE: PROPOSED ELEVATIONS - SHEET 01

DRAWING NO.: J2139-KTA-22-XX-DR-A-6508

A1 SCALE: As indicated AGILE NO.: REV: P1