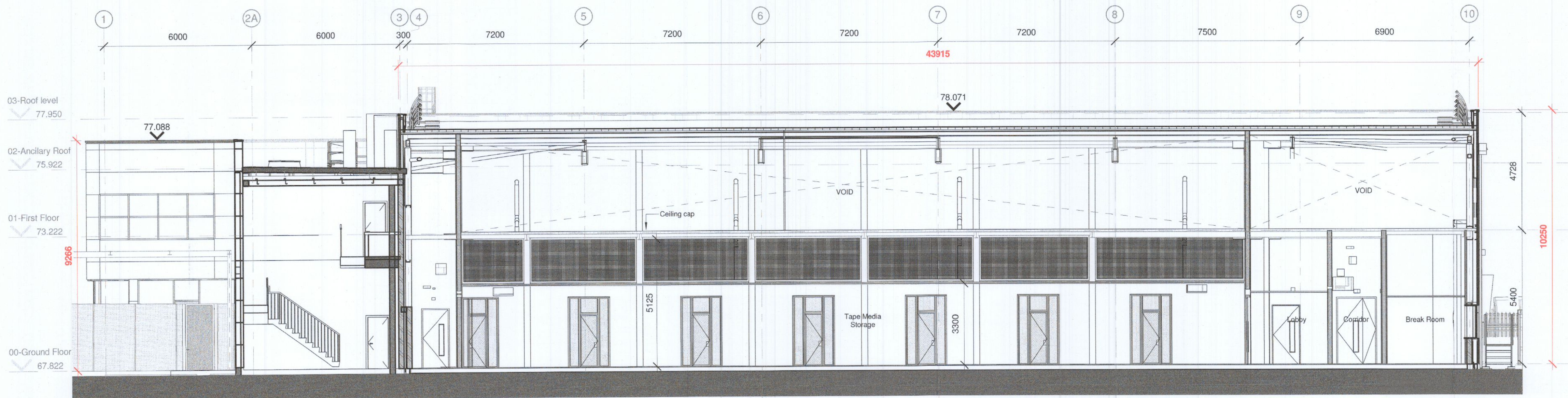


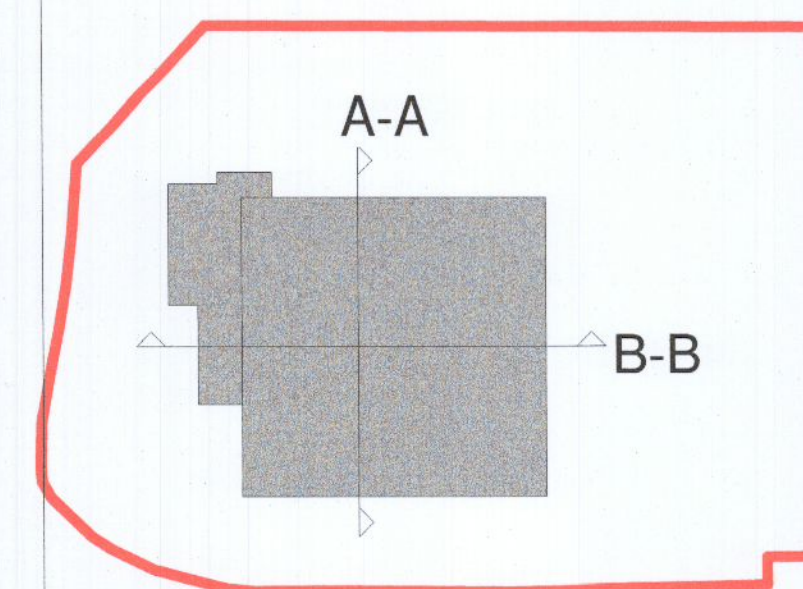
1 5001 Proposed Section A-A
1:100



2 5001 Proposed Section B-B
1:100

KEYNOTES

LEGEND



| REV. | DATE | ISSUED FOR PLANNING | DESCRIPTION | KTA | CHK | APP |
|------|------------|---------------------|-------------|-----|-----|-----|
| P1 | 16.12.2022 | ISSUED FOR PLANNING | | KTA | | |

ANY UNAUTHORIZED USE OR REPRODUCTION OF THIS DOCUMENT IN WHOLE OR IN PART IS PROHIBITED. DELETE THIS DOCUMENT IF YOU HAVE RECEIVED IT IN ERROR.

MECHANICAL & ELECTRICAL ENGINEER CIVIL & STRUCTURAL ENGINEER

Clifton Scannell Emerson Associates
Clifton Scannell Emerson Associates Limited
 Consulting Engineers, 3rd Floor The Hub, Station
 Dublin, D06 W7E2
 01-856 1172
 1-856 1172333 E: info@csesa.com W: www.csesa.com

ARCHITECT
KAVANAGH TUITE ARCHITECTS
TERMINUS HILLS, CLOONKILLAGH ROAD, DUBLIN D06 X207, IRELAND
 T: +353 1 2368888 M: +353 87 2322222 E: info@kavanaghtuite.ie

BB7
BB7 Fire & Security Consulting
 Dublin, Mac's Retail Business Centre, Parkgate
 Dublin, D06 W7E2
 T: +353 1 857 3222 E: info@bb7.com W: www.bb7.com

SECURITY ENGINEER
CUNDALL
Cundall Engineering Limited
 78 Capheaton Court, Dublin
 D02 XE27, Ireland
 T: +353 (0)1 519 7038 E: info@cundall.com W: www.cundall.com

OTHER ENGINEER
Macro Works Ltd.
 Ground Floor, Hibernia House,
 Cherrywood Business Park,
 Loughlinstown,
 Ireland
 D18 E440

PROJECT: UNIT 1, M50 BUSINESS PARK

TITLE: PROPOSED SECTIONS

DRAWING NO.: J2139-KTA-22-XX-DR-A-5001

| A1 | SCALE: | AGILE No.: | REV: |
|----|--------------|------------|------|
| | As indicated | | P1 |