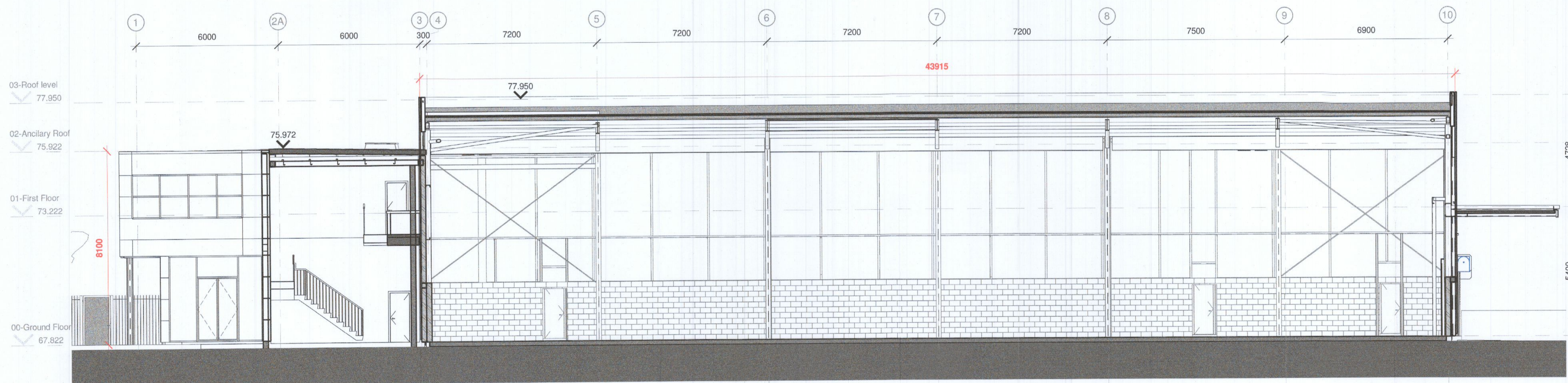


1 5000 Existing Section A-A
1:100

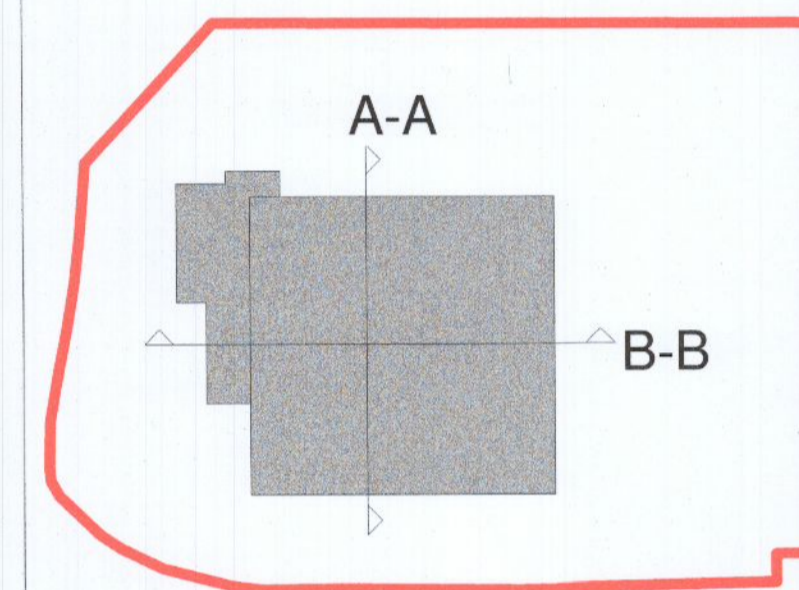


2 5000 Existing Section B-B
1:100

NOTES

KEYNOTES

LEGEND



REV.	DATE	DESCRIPTION	DRN	ENG	CHK	APP
P1	16.12.2022	ISSUED FOR PLANNING	KTA	KTA		

ANY UNAUTHORIZED USE OR REPRODUCTION OF THIS DOCUMENT IN WHOLE OR IN PART IS PROHIBITED. DELETE THIS DOCUMENT IF YOU HAVE RECEIVED IT IN ERROR

MECHANICAL & ELECTRICAL ENGINEER CIVIL & STRUCTURAL ENGINEER

Clifton Scannell Emerson Associates
Clifton Scannell Emerson Associates Limited
 Consulting Engineers, 2nd Floor, The Old Mill, Ballymore Park, Dublin 15, Ireland
 Tel: +353 1 2840000, Fax: +353 1 2840001, Email: info@cses.ie, www.cses.ie

KAVANAGH TUITE ARCHITECTS
TENNIS MILLS, CLOONKEAD ROAD, DOKXDT, IRELAND
 T: +353 1 2889900, M: +353 1 2889900, E: info@kavanaghtuite.ie

BB7
BB7 Fire & Security Consulting
 Unit 2, Mill Park Business Centre, Rathgar
 Dublin 6, IRELAND
 T: +353 1 907 3202, E: info@bb7.ie, www.bb7.ie

CUNDALL
Cundall Engineering Limited
 7 St Stephen's Green, Dublin
 D02 R027, Ireland
 T: +353 1 509 7100, E: info@cundall.com, www.cundall.com

Macro Works Ltd
Macro Works Ltd
 Ground Floor, Hibernia House,
 Cherrywood Business Park,
 Loughinstown,
 Ireland
 D18 E440

PROJECT: UNIT 1, M50 BUSINESS PARK

TITLE: EXISTING SECTIONS

DRAWING NO.: J2139-KTA-22-XX-DR-A-5000

SCALE: A1 As indicated AGILE No.: REV: P1