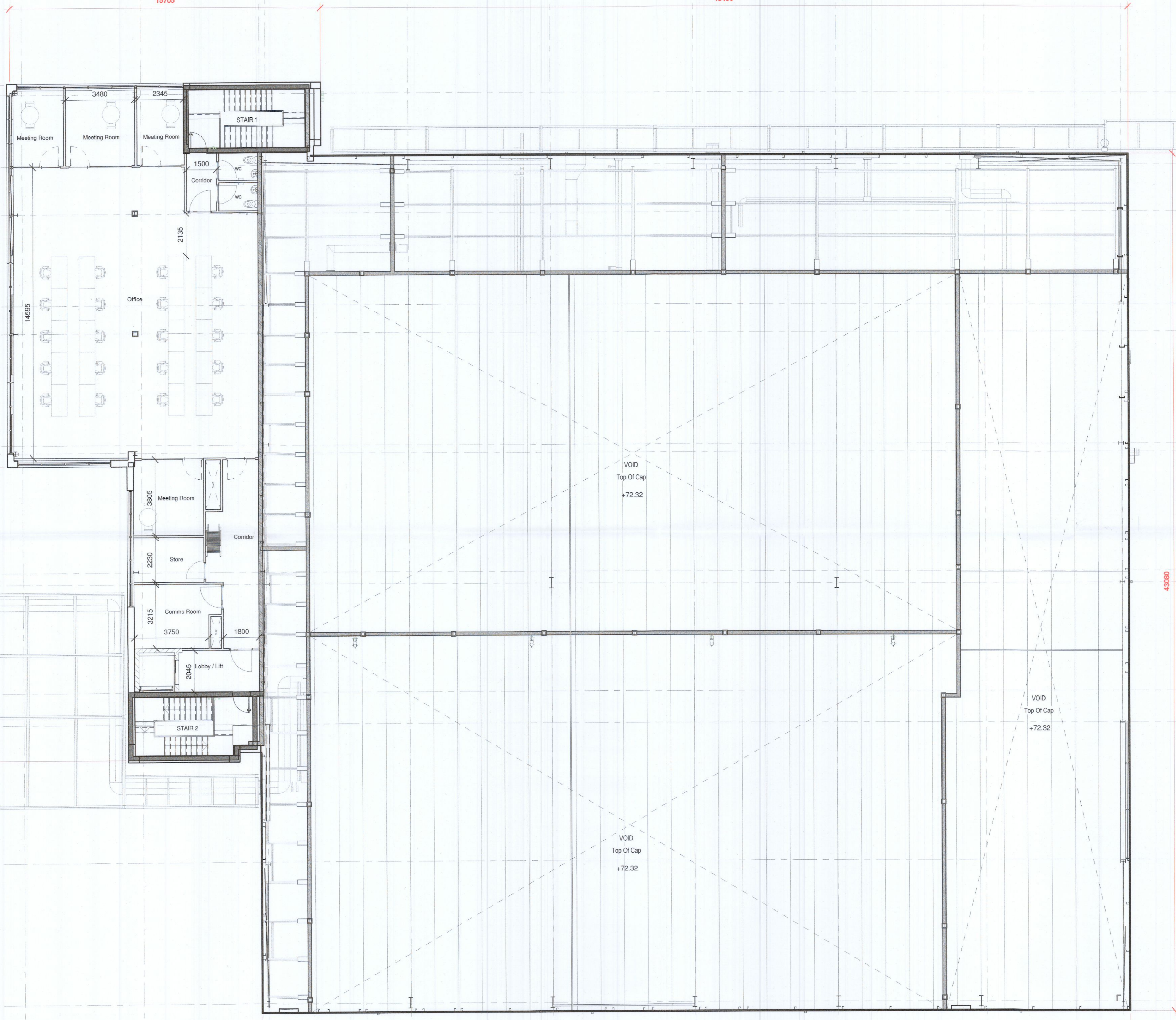


1 6000 2A 6000 3 300 4 7200 5 7200 6 7200 7 7200 8 7500 9 6900 10



NOTES

KEYNOTES

LEGEND

REV.	DATE	DESCRIPTION	DRN	ENG	CHK	APP
P1	16.12.2022	ISSUED FOR PLANNING	KTA	KTA		

ANY UNAUTHORIZED USE OR REPRODUCTION OF THIS DOCUMENT IN WHOLE OR IN PART IS PROHIBITED. DELETE THIS DOCUMENT IF YOU HAVE RECEIVED IT IN ERROR

MECHANICAL & ELECTRICAL ENGINEER CIVIL & STRUCTURAL ENGINEER

Clifton Scannell Emerson Associates

Office: Scannell Emerson Associates Limited
 Consulting Engineers, 3rd Floor, The Heights, Station Place, Fallowfield, Dublin 4, Ireland. Tel: +353 1 2822000. E: info@scem.co.uk

ARCHITECT **KAVANAGH TUITE ARCHITECTS**

TERMINUS MILLS, CLOONKESH ROAD, D08 X0D7, IRELAND
 T: +353 1 2188000 M: +353 87 2345678 E: info@kavanaghtuite.ie

FIRE ENGINEER **BB7**

BB7 Fire & Security Consulting
 1st Fl., Black Point Business Centre, Dunlough, Dublin, D08 X0D7
 T: +353 1 907 3222 E: info@bb7.com W: www.bb7.com

SECURITY ENGINEER **CUNDALL**

Cundall Engineering Limited
 75 Stephen's Green, Dublin, D02 R027, Ireland
 T: +353 1 221 6170 E: info@cundall.com W: www.cundall.com

OTHER ENGINEER **Macro Works Ltd.**

Macro Works Ltd.
 Ground Floor, Hibernia House,
 Cherrywood Business Park,
 Loughlinstown, Dublin, D18 E640

PROJECT: UNIT 1, M50 BUSINESS PARK

TITLE: PROPOSED FIRST FLOOR PLAN

DRAWING NO.: J2139-KTA-22-XX-DR-A-2015

SCALE: 1:100 AGILE No.: REV: P1

