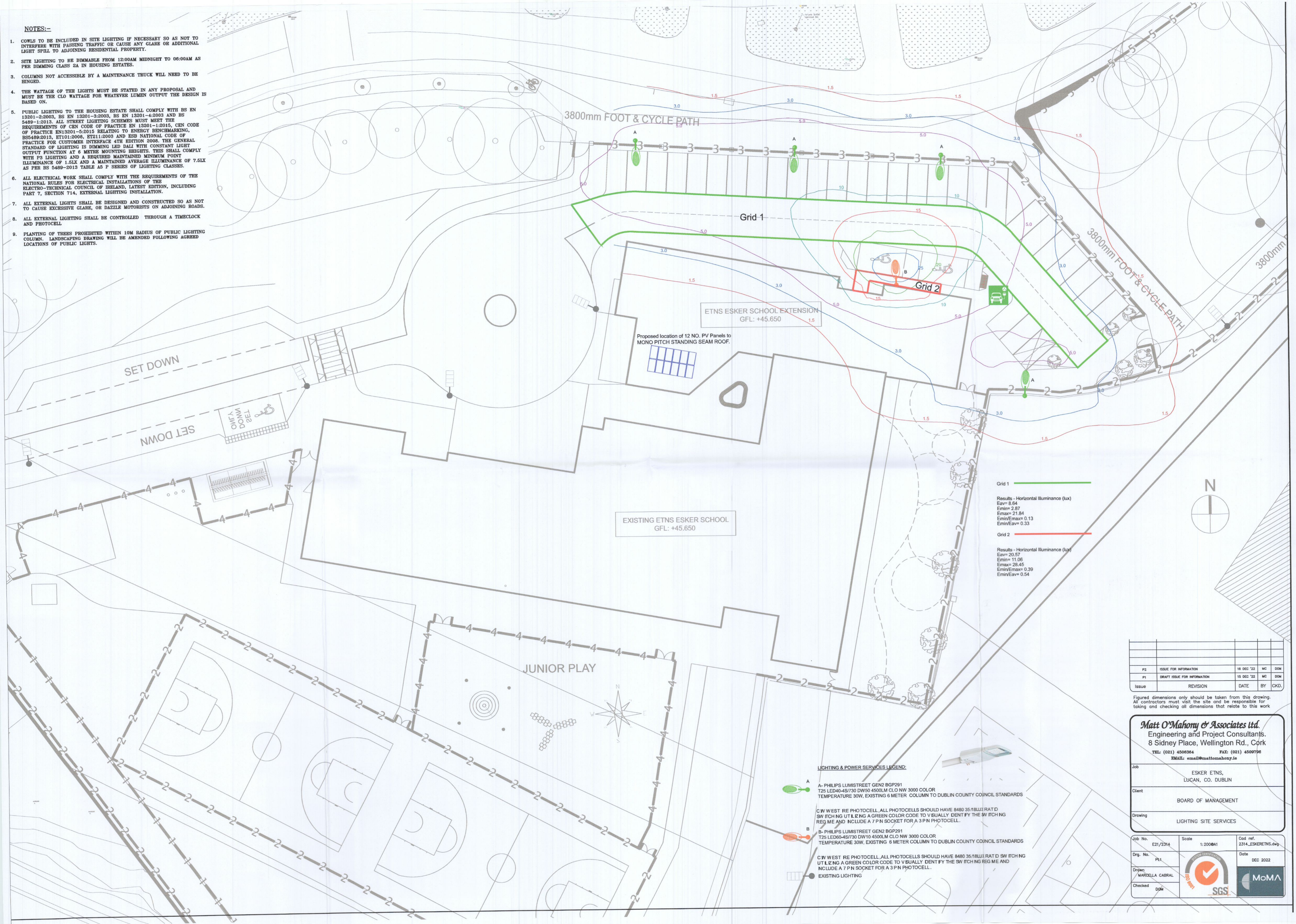


**NOTES:-**

- COWLS TO BE INCLUDED IN SITE LIGHTING IF NECESSARY SO AS NOT TO INTERFERE WITH PASSING TRAFFIC OR CAUSE ANY GLARE OR ADDITIONAL LIGHT SPILL TO ADJOINING RESIDENTIAL PROPERTY.
- SITE LIGHTING TO BE DIMMABLE FROM 12:00AM MIDNIGHT TO 06:00AM AS PER DIMMING CLASS 2A IN HOUSING ESTATES.
- COLUMNS NOT ACCESSIBLE BY A MAINTENANCE TRUCK WILL NEED TO BE HINGED.
- THE WATTAGE OF THE LIGHTS MUST BE STATED IN ANY PROPOSAL AND MUST BE THE CLO WATTAGE FOR WHATEVER LUMEN OUTPUT THE DESIGN IS BASED ON.
- PUBLIC LIGHTING TO THE HOUSING ESTATE SHALL COMPLY WITH BS EN 13201-2:2003, BS EN 13201-3:2003, BS EN 13201-4:2003 AND BS 5489-1:2013. ALL STREET LIGHTING SCHEMES MUST MEET THE REQUIREMENTS OF CEN CODE OF PRACTICE EN 13201-1:2015, CEN CODE OF PRACTICE EN 13201-5:2015 RELATING TO ENERGY BENCHMARKING, BS5489:2013, ET101:2008, ET211:2003 AND ESB NATIONAL CODE OF PRACTICE FOR CUSTOMER INTERFACE 4TH EDITION 2008. THE GENERAL STANDARD OF LIGHTING IS DIMMING LED BALL WITH CONSTANT LIGHT OUTPUT FUNCTION AT 6 METRE MOUNTING HEIGHTS. THIS SHALL COMPLY WITH P3 LIGHTING AND A REQUIRED MAINTAINED MINIMUM POINT ILLUMINANCE OF 1.5LX AND A MAINTAINED AVERAGE ILLUMINANCE OF 7.5LX AS PER BS 5489-2013 TABLE A5 F SERIES OF LIGHTING CLASSES.
- ALL ELECTRICAL WORK SHALL COMPLY WITH THE REQUIREMENTS OF THE NATIONAL RULES FOR ELECTRICAL INSTALLATIONS OF THE ELECTRO-TECHNICAL COUNCIL OF IRELAND, LATEST EDITION, INCLUDING PART 7, SECTION 714, EXTERNAL LIGHTING INSTALLATION.
- ALL EXTERNAL LIGHTS SHALL BE DESIGNED AND CONSTRUCTED SO AS NOT TO CAUSE EXCESSIVE GLARE, OR DAZZLE MOTORISTS ON ADJOINING ROADS.
- ALL EXTERNAL LIGHTING SHALL BE CONTROLLED THROUGH A TIMECLOCK AND PHOTOCELL.
- PLANTING OF TREES PROHIBITED WITHIN 10M RADIUS OF PUBLIC LIGHTING COLUMN. LANDSCAPING DRAWING WILL BE AMENDED FOLLOWING AGREED LOCATIONS OF PUBLIC LIGHTS.



Grid 1	Results - Horizontal Illuminance (lux)
	Eavg= 8.64
	Emin= 2.87
	Emax= 21.84
	Emin/Eavg= 0.13
	Emin/Emax= 0.33
Grid 2	Results - Horizontal Illuminance (lux)
	Eavg= 20.57
	Emin= 11.06
	Emax= 28.45
	Emin/Eavg= 0.39
	Emin/Emax= 0.54

Issue	REVISION	DATE	BY	CHKD.
P2	ISSUE FOR INFORMATION	16 DEC '22	MC	DOM
P1	DRAFT ISSUE FOR INFORMATION	15 DEC '22	MC	DOM

Figured dimensions only should be taken from this drawing. All contractors must visit the site and be responsible for taking and checking all dimensions that relate to this work

**Matt O'Mahony & Associates Ltd.**  
 Engineering and Project Consultants.  
 8 Sidney Place, Wellington Rd., Cork  
 TEL: (021) 4500364 FAX: (021) 4500798  
 EMAIL: email@mattmahony.ie

Job	ESKER ETNS, LUCAN, CO. DUBLIN
Client	BOARD OF MANAGEMENT
Drawing	LIGHTING SITE SERVICES

Job No.	E21/2314	Scale	1:2000A1	Cad ref.	2314_ESKERETNS.dwg
Drg. No.	PL1	Date	DEC 2022		
Drawn	MARCELLA CABRAL				
Checked	DOM				

**LIGHTING & POWER SERVICES LEGEND:**

- A- PHILIPS LUMISTREET GEN2 BGP291  
T25 LED60-4S/730 DW10 4500LM CLO NW 3000 COLOR  
TEMPERATURE 30W, EXISTING 6 METER COLUMN TO DUBLIN COUNTY COUNCIL STANDARDS
- B- PHILIPS LUMISTREET GEN2 BGP291  
T25 LED60-4S/730 DW10 4500LM CLO NW 3000 COLOR  
TEMPERATURE 30W, EXISTING 6 METER COLUMN TO DUBLIN COUNTY COUNCIL STANDARDS
- C/W WEST RE PHOTOCELL, ALL PHOTOCELLS SHOULD HAVE 8480 35/18LUX RAT D SW ITCH NG UT I L I Z NG A GREEN COLOR CODE TO V S U A L L Y D E N T I F Y T H E SW ITCH NG REG I M E AND I N C L U D E A 7 P N S O C K E T F O R A 3 P N P H O T O C E L L .
- D- PHILIPS LUMISTREET GEN2 BGP291  
T25 LED60-4S/730 DW10 4500LM CLO NW 3000 COLOR  
TEMPERATURE 30W, EXISTING 6 METER COLUMN TO DUBLIN COUNTY COUNCIL STANDARDS
- C/W WEST RE PHOTOCELL, ALL PHOTOCELLS SHOULD HAVE 8480 35/18LUX RAT D SW ITCH NG UT I L I Z NG A GREEN COLOR CODE TO V S U A L L Y D E N T I F Y T H E SW ITCH NG REG I M E AND I N C L U D E A 7 P N S O C K E T F O R A 3 P N P H O T O C E L L .
- EXISTING LIGHTING