

ARCHITECTS DESIGN STATEMENT

for

ESKER

EDUCATE TOGETHER NATIONAL SCHOOL

in

LUCAN, Co. DUBLIN.



SUBMISSION TO SOUTH DUBLIN COUNTY COUNCIL
December 2022

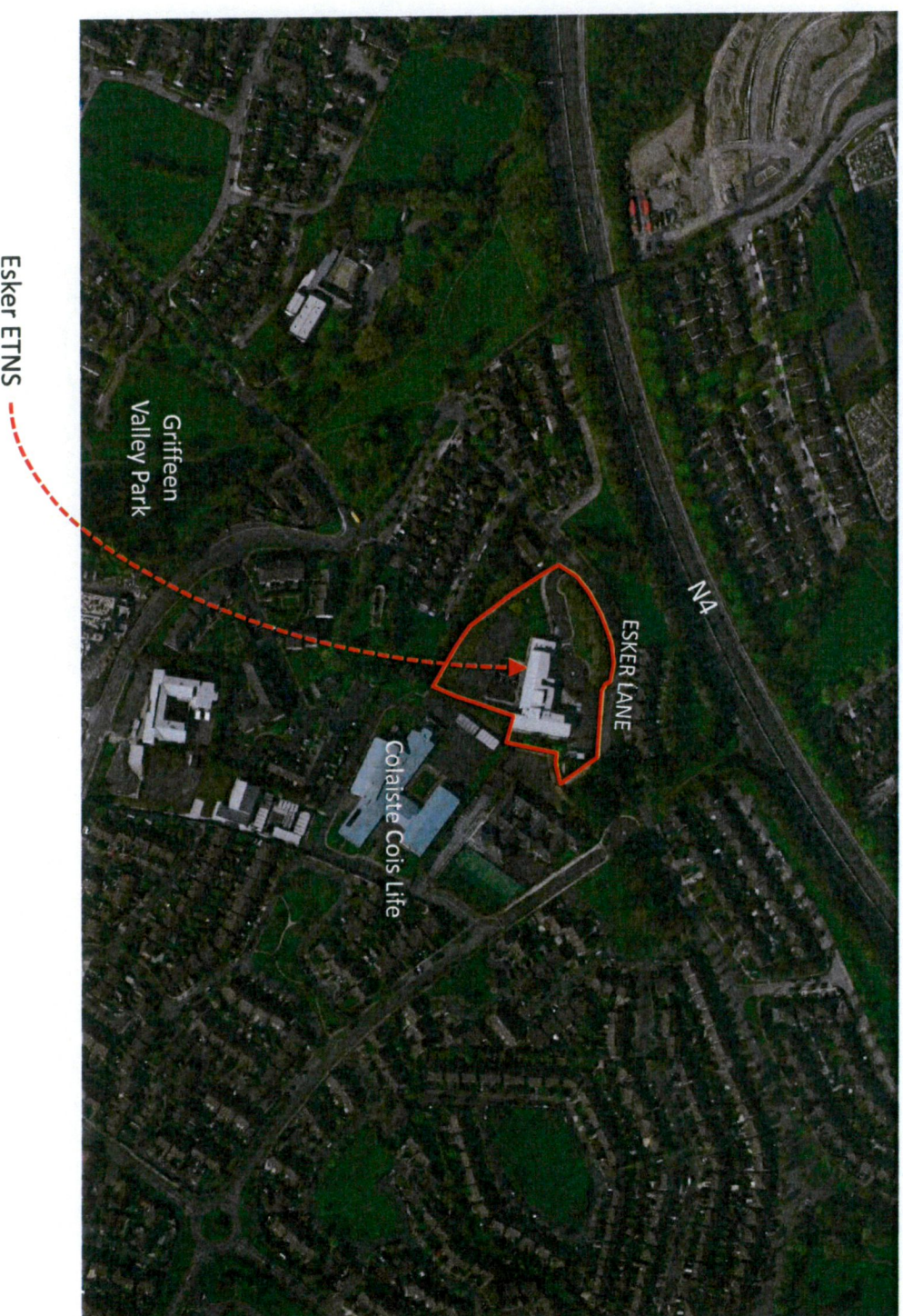
1.0 Introduction

1.0 Introduction

This Design Statement forms part of a Planning Application submission for the proposed new extension to the existing Esker Educate Together National school development at The Glebe, Esker Lane, Lucan, Co. Dublin.

The intention of this document is to outline proposals in a general manner and to set out the urban and planning context and architectural principles that informed the design process.

The proposed development is part of the existing Esker Educate Together National School, Lucan. The accommodation is a 2 storey extension located to the northeast end of the existing school. The SEN unit is to be located on the ground floor of this new extension, with direct access from the Set-down area and its separate, controlled entrance positioned close to the existing main entrance. A revised parking area, new landscaping, sensory garden and play area in the existing garden will also form part of this application.



2.2 Site Photographs



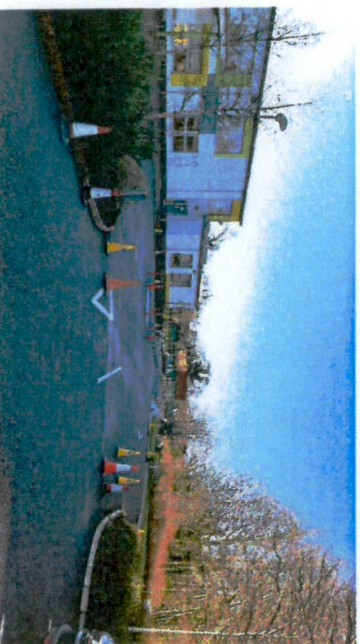
Main entrance from Esker Lane



School as viewed from car park



School as Viewed from roundabout



View from car park



Main Entrance from School Grounds



School set down area



Main Entrance & GP Hall to Esker ETNS



View to back of school (east) and garden space



View to bin store and bike shelter to East of site. To be relocated

3.0 Site Analysis

3.2 Aerial View

The original two storey building dates from 2014 and includes a single storey SET block, GP Hall, external storage and play areas. Wayleaves cross the site to the south as noted on the drawing.

Enrolment numbers at 2020 are 420 pupils.

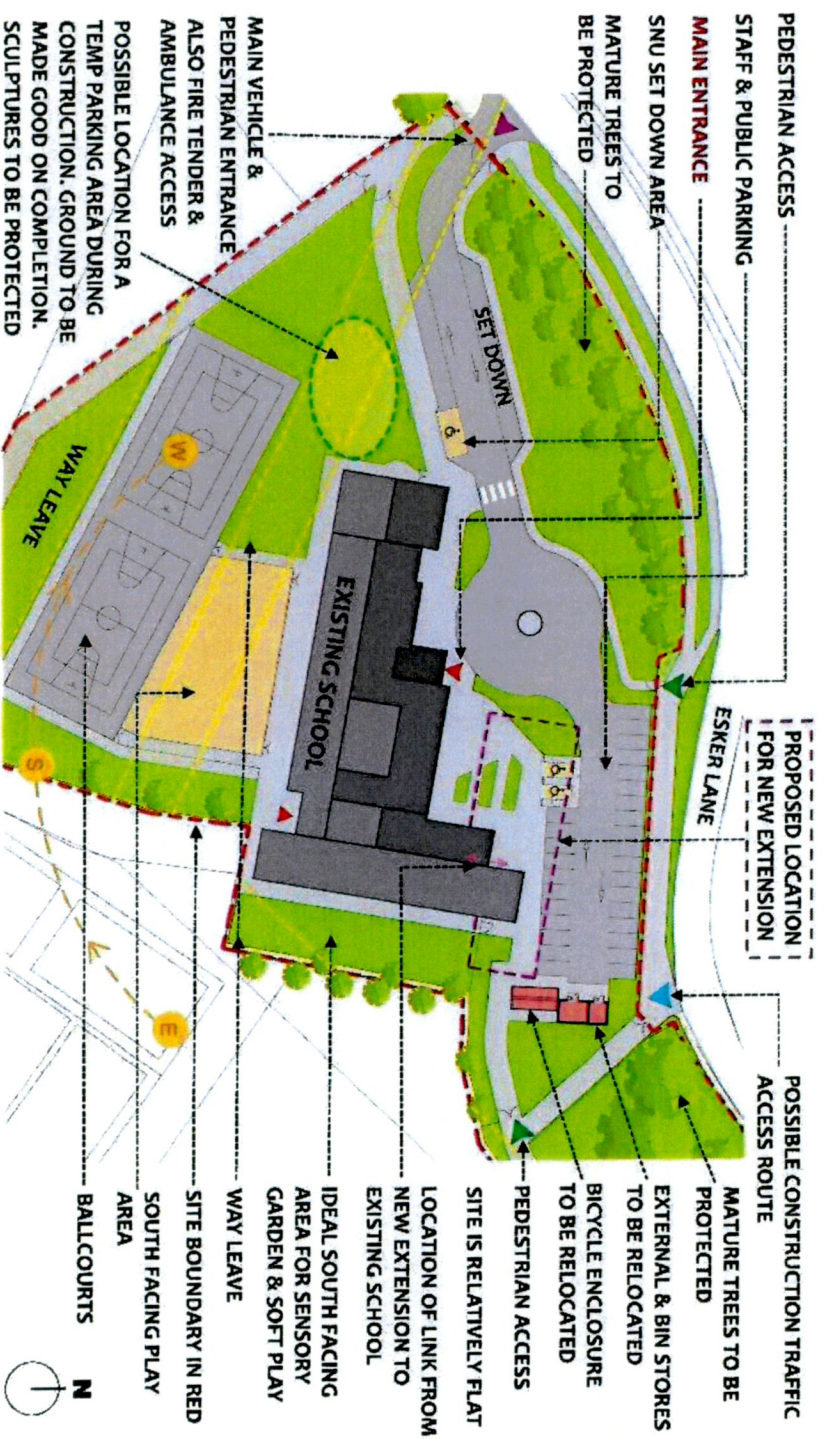
The Project Brief:

- 2 No. SEN Classbase with central activities area
- Sensory Garden with soft play area
- 1 No. General Classroom
- 2 No. SET Rooms
- Ancillary Spaces
- Review of Existing Roads/Set-Down-Parking Arrangements

The brief calls for only a small area of circulation and no area for escape stairs.

The new extension requires a physical connection to the school with some reorganising of the internal accommodation where the connection meets the existing school. The SEN is to have it's own dedicated entrance.

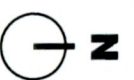
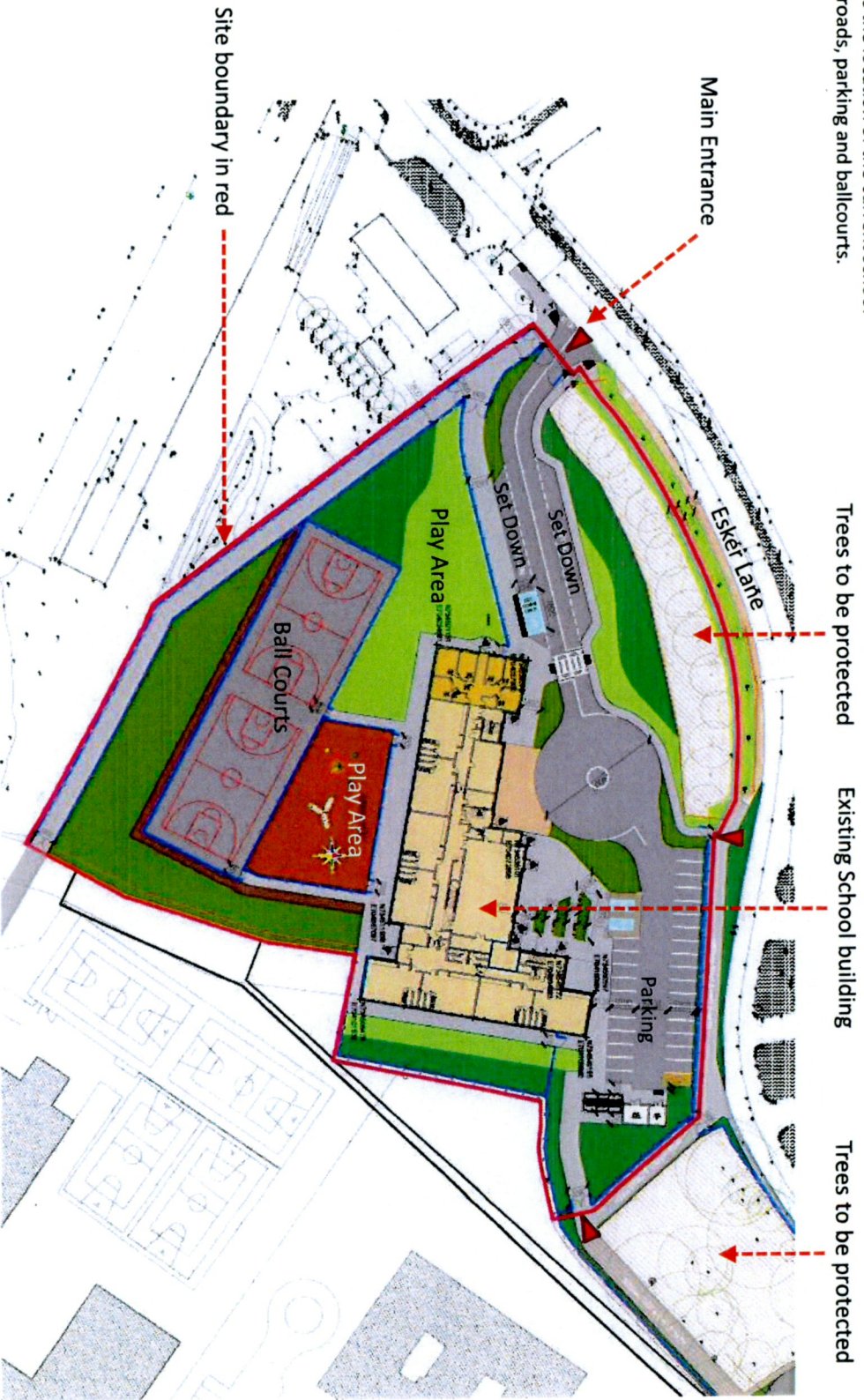
Several wayleaves and an attenuation tank under the ballcourts must be kept clear. A request from the school and the local authority noted that the mature trees to the north and east of the site are to be protected as this improves the visual landscape of the site.



4.0 Description of the Development

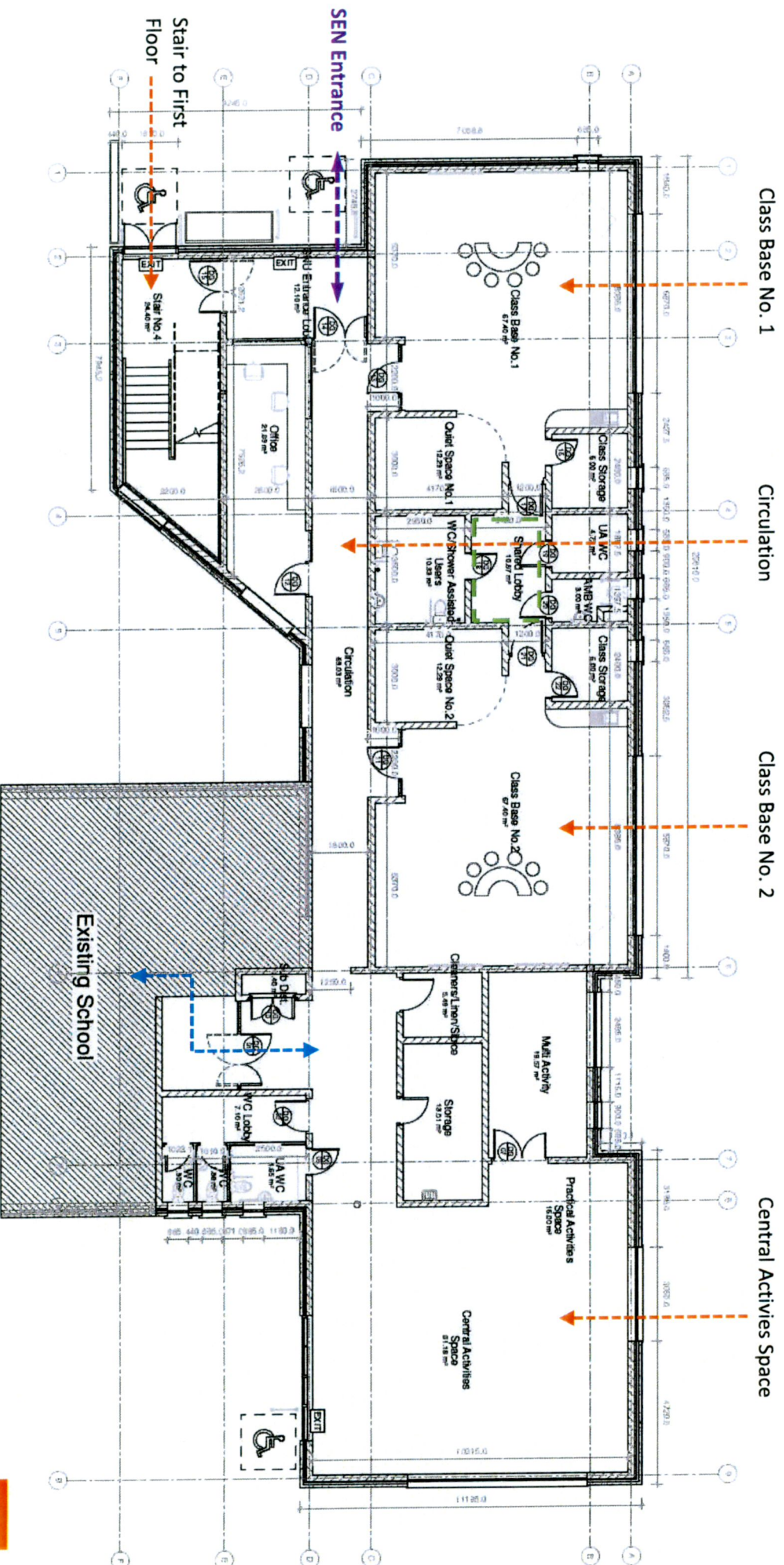
4.1 Existing site plan drawing

This site plan drawing shows the location of the current school building, along with access roads, parking and ballcourts.



4.0 Description of the Development

4.4 Proposed 2 storey Extension – Ground Floor

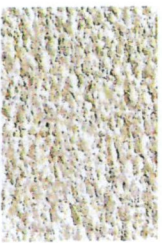


4.0 Description of the Development

4.7 Proposed Elevations – 2 Storey Extension



Standing Seam
Metal Roof



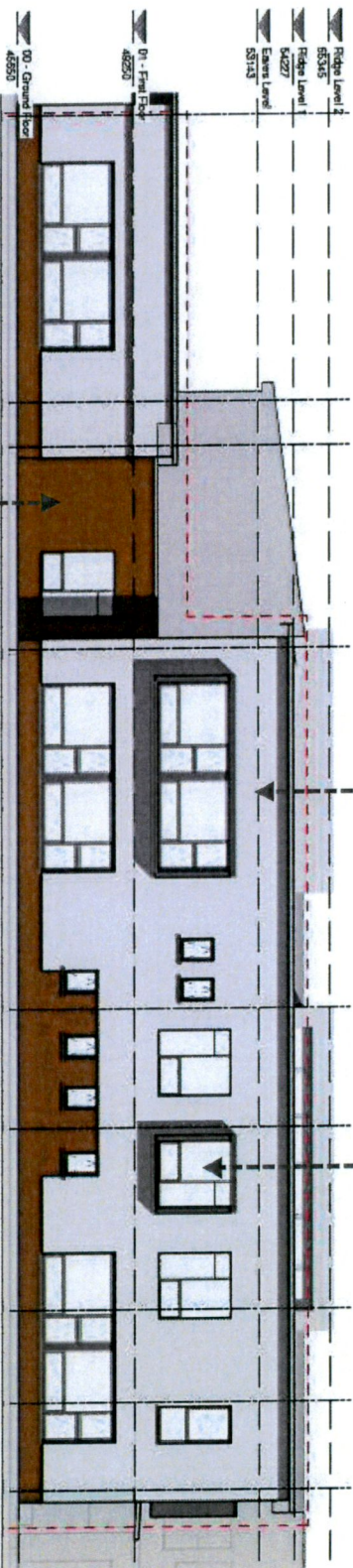
Render



Brick



Paving



North Elevation

Coloured render finish

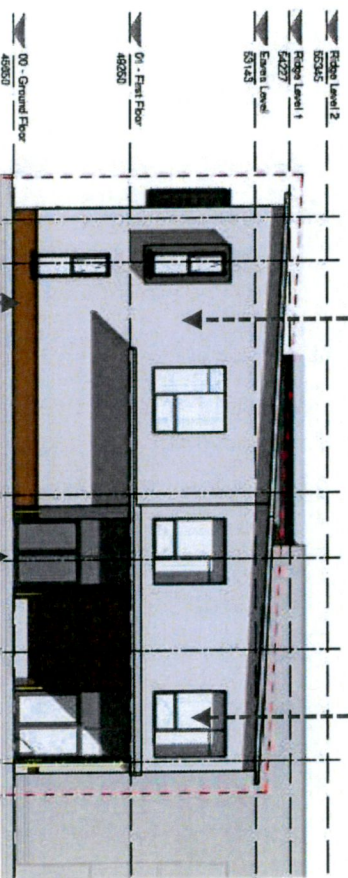
Aluminium Framed Windows

Selected Brick Finish

Coloured render finish

Aluminium Framed Windows

West Elevation



Selected Brick
Finish

Entrance to
Proposed SEN Extension

4.0 Description of the Development

4.8 Materials

A limited palette of high quality, low-maintenance and durable materials have been chosen for this development.

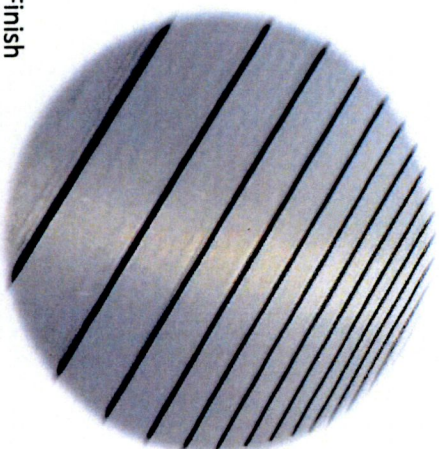
The materials are appropriate for the educational nature of the buildings and respond to the differing styles of the existing school buildings.

A light rendered finish has been chosen as the predominant material to a large area of the extensions, with a selected brick finish used to create a plinth to raise up the rendered finish, similar to the existing school building. The brick type and render colours will be selected by the client.

Dark-framed windows throughout with extruded aluminium framing in places, aim to add visual interest & colour.

An aluminium seamed roof with dark grey colour to match with existing roofs, finishes both buildings. Any flat roof areas will also have a dark grey colour.

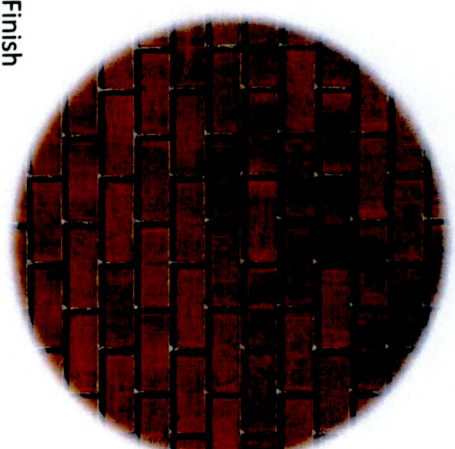
Roof Finish



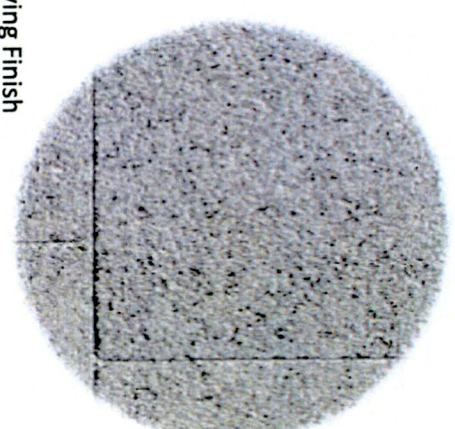
Render Finish



Brick Finish

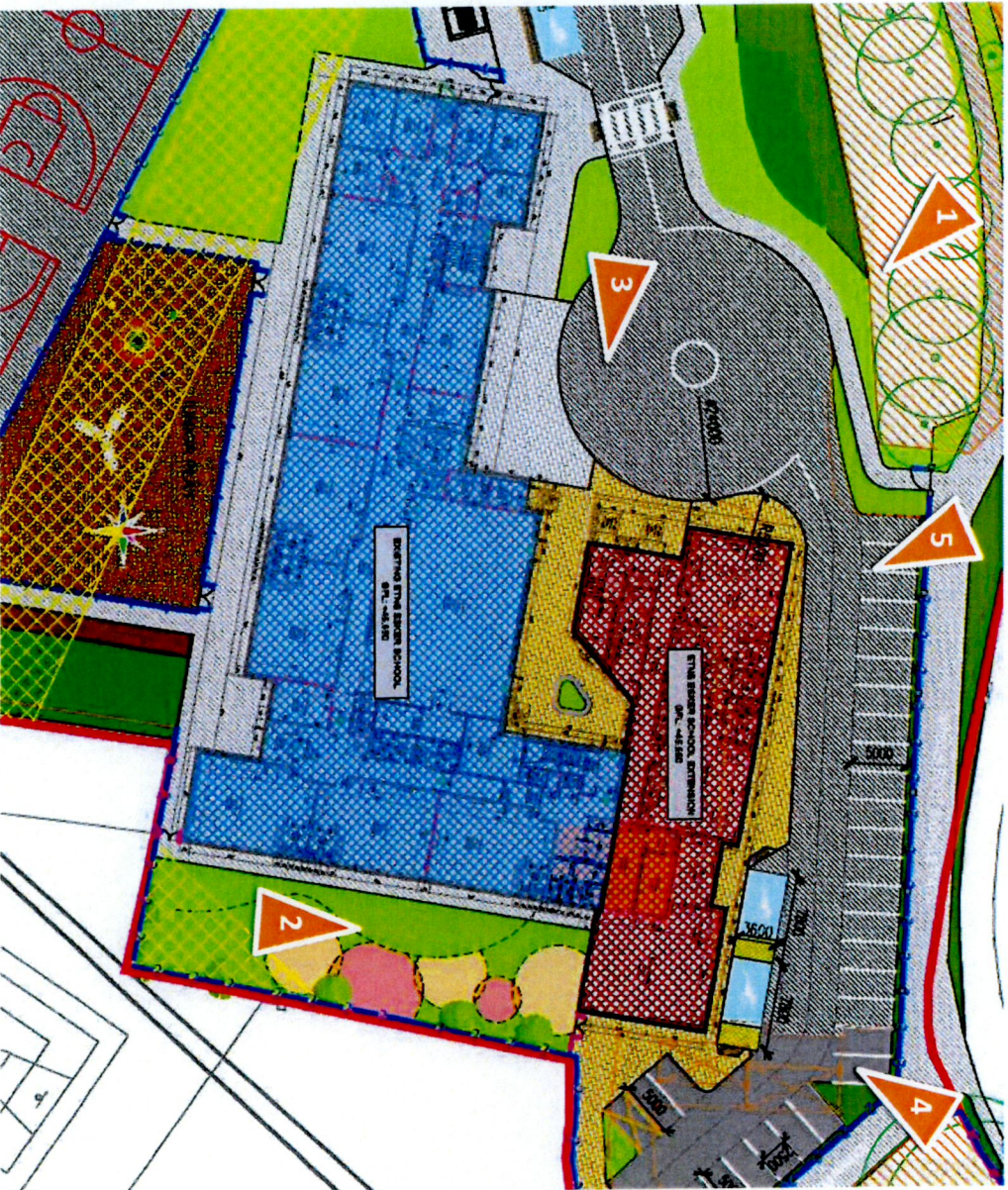


Paving Finish



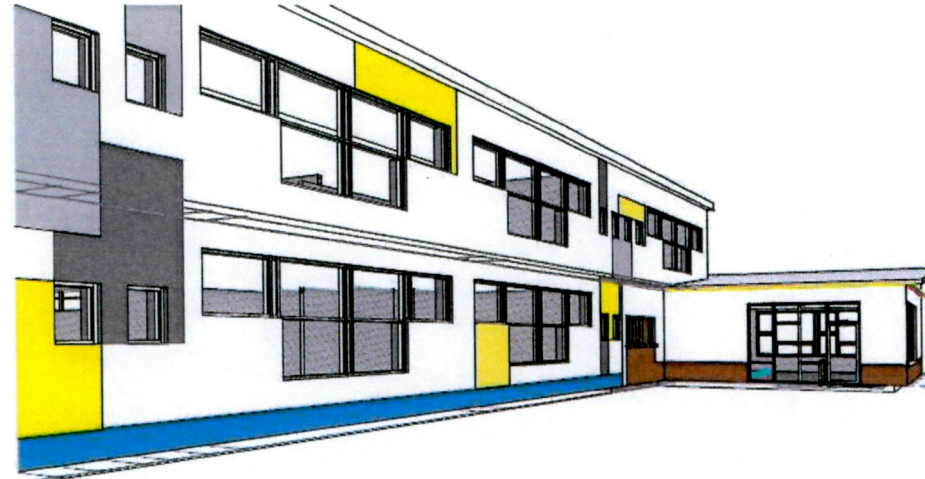
5.0 Proposed 3D Views

Camera Location Map



5.0 Proposed 3D Views

View 2 – View from Sensory Garden



View 3 – View of Main Entrance

