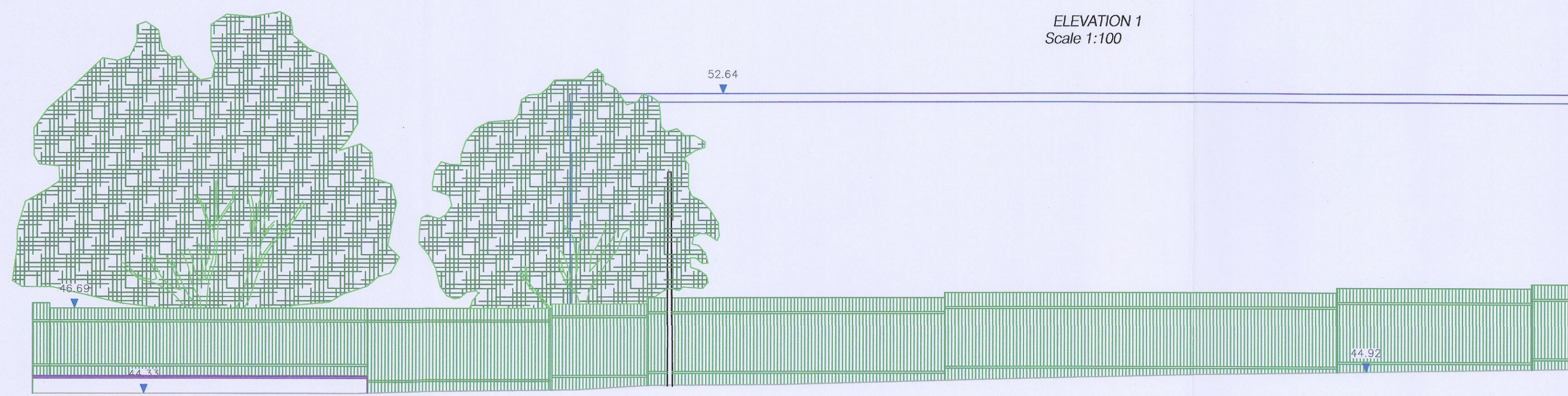
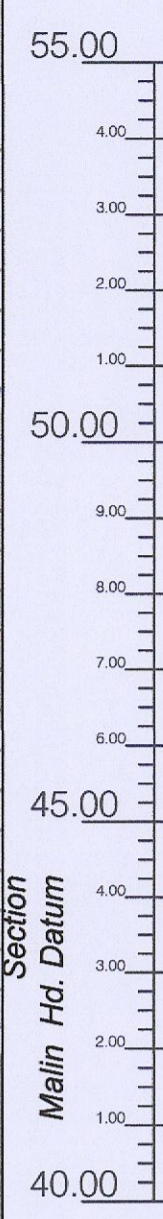
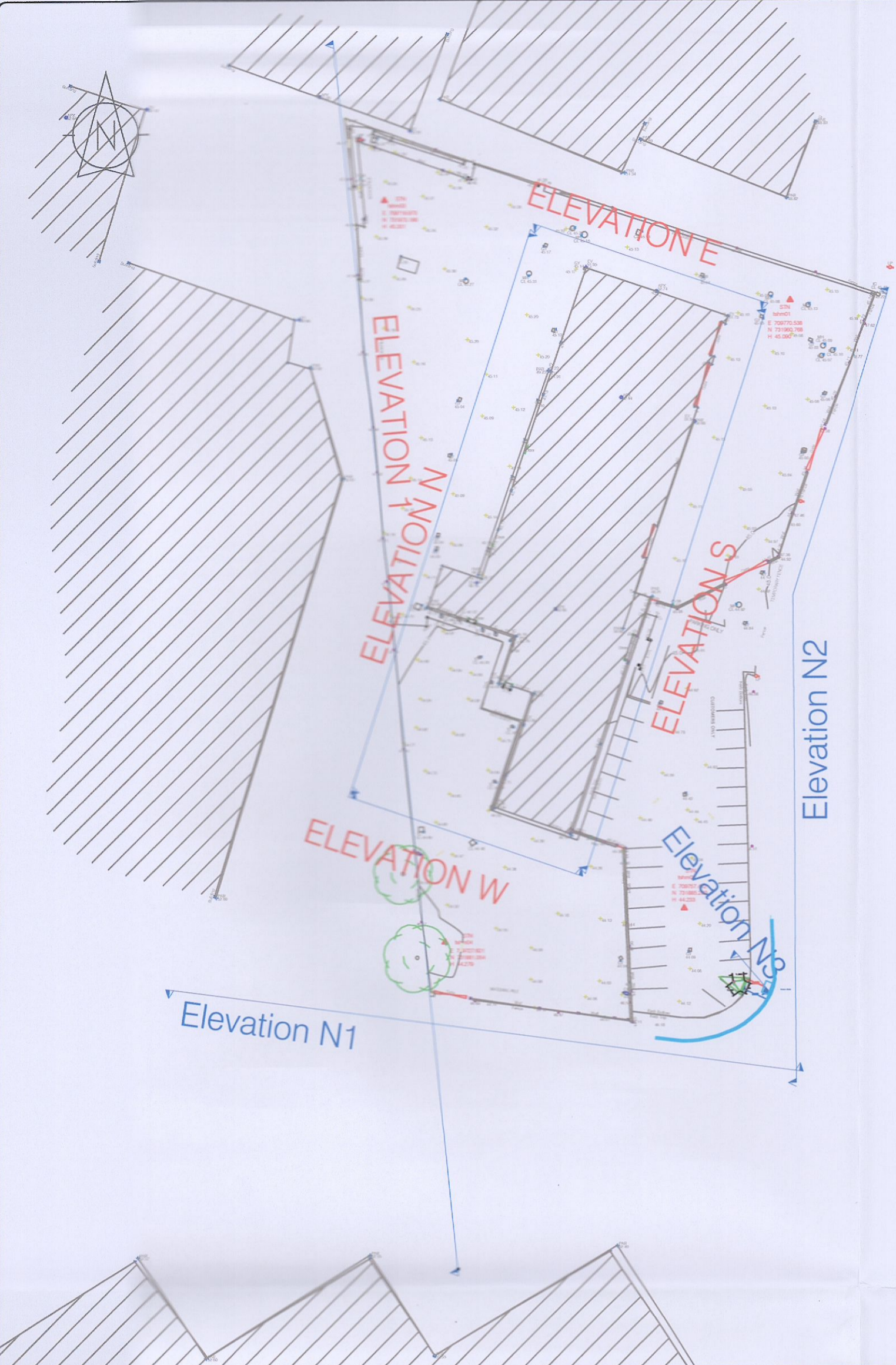


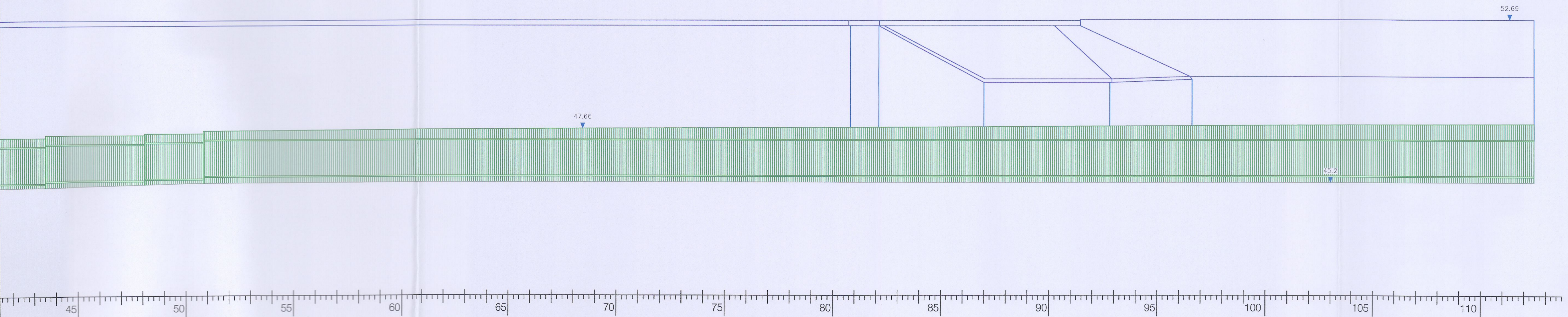
NTS



ELEVATION North Wall Existing

ELEVATION 1
Scale 1:100

ELEVATION 1
Scale 1:100



LEGEND
Street furniture & Services

5.42 Over Head Wires (LWAS) Pylon ESB	5.42 Bus Stop	5.42 Bench Seat	5.42 Phone Box
5.42 Flowerbed	5.42 Bollard	5.42 Dust	5.42 Gas Cover
5.42 Tree	5.42 Beacon	5.42 Daily CP Box	5.42 CP Box
5.42 Lamp	5.42 On-hole Cover	5.42 Jet Car Park Vent	5.42 Waste Bin
5.42 Barrier	5.42 Bore Hole	5.42 Hydrant	5.42 Fire Hydrant
5.42 Trial Pit	5.42 Electricity Pole	5.42 Fire Hydrant	5.42 Fire Hydrant
5.42 Bus/Tram Shelter	5.42 Telegraph pole	5.42 Fire Hydrant	5.42 Fire Hydrant
5.42 Postbox	5.42 CCTV Camera Pole	5.42 ESB Box	5.42 ESB Box
5.42 Valve - General	5.42 CCTV Camera Pole	5.42 ESB Inspection Cover	5.42 ESB Inspection Cover
5.42 Water Valve	5.42 Lamp Post	5.42 Traffic Control Box	5.42 Traffic Control Box
5.42 Gas Valve	5.42 Fuel Nozzle	5.42 LUAS Technical Cubicle	5.42 LUAS Technical Cubicle
5.42 Sluice Valve	5.42 Surface Water Man	5.42 Ticker Vending Machine	5.42 Ticker Vending Machine
5.42 Air Valve	5.42 Manholes	5.42 Water Meter Cover	5.42 Water Meter Cover
5.42 Stop Cock	5.42 Air Conditioning Vents	5.42 Telecom Inspection Cover	5.42 Telecom Inspection Cover
5.42 C/P Post	5.42 Services Inspection Cover	5.42 Monument / Tollies	5.42 Monument / Tollies
5.42 Marker Post	5.42 Traffic Inspection Cover	5.42 Tank Storage	5.42 Tank Storage
5.42 Traffic Light	5.42 Cable TV Inspection Cover	5.42 Basement: Mkt, Cover & Pipe	5.42 Basement: Mkt, Cover & Pipe
5.42 Parking Meter	5.42 ESB Inspection Cover	5.42 Detailed Aerial Mark	5.42 Detailed Aerial Mark
5.42 Power Aerial Mark	5.42 W/L Inspection Cover	5.42 Stay for pole	5.42 Stay for pole
5.42 Street Card Validator	5.42 ESB Inspection Cover	5.42 Pipe Protection	5.42 Pipe Protection
5.42 Unknown Valve	5.42 Holding Eye	5.42 Washout	5.42 Washout

Natural Features

5.42 Surface Change	5.42 Water Level	5.42 Fair Way
5.42 Land Drain	5.42 Crown Level	5.42 Green
5.42 Bottom of Slope	5.42 Invert Level	5.42 Tee Box
5.42 Top of Slope	5.42 Bed Level	5.42 Bed Level
5.42 Blah	5.42 Spotlight	5.42 Spotlight
5.42 Water Edge / Lake / Flood	5.42 Survey Station	5.42 Survey Station
5.42 Hedge / Tree Dip Line / Vegetation	5.42 Photo point	5.42 Photo point
5.42 Tree Coniferous	5.42 Tree Deciduous	5.42 Top of Tree

Built Features

Roads & Road Markings

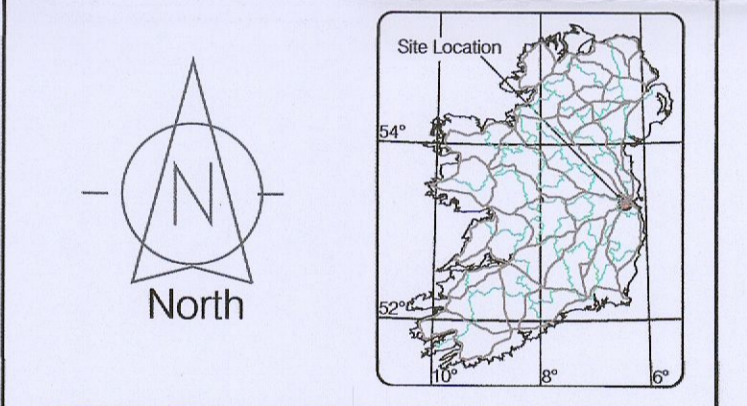
5.42 Building	5.42 Fence	5.42 Floor Level
5.42 Edge of Road	5.42 Gate	5.42 Apex Height
5.42 Kerb Bottom	5.42 Road Centreline	5.42 Eaves Height
5.42 Kerb Top	5.42 Top of Wall	5.42 Parapet Height
5.42 Bridge Abutment	5.42 Handicap	5.42 South Elevation
5.42 Bridge Deck	5.42 Property Line	5.42 Step Level
5.42 Bridge Pier	5.42 Road Scar	5.42 Concrete Pad
5.42 Building Facade	5.42 Top of Fence	5.42 Track
5.42 Footpath / Platform Train & Tram	5.42 Wall / Retaining Wall	5.42 Wall / Retaining Wall
5.42 Damp Proof Course / Verge	5.42 Railway / Tram Rail / Grating / Ramp	5.42 Railway / Tram Rail / Grating / Ramp
5.42 Bridge Pier / Wall & Gate Pier / LUAS Trackbed	5.42 Building Canopy / Roof / Overhang	5.42 Building Canopy / Roof / Overhang
5.42 Cycleway / Private Landing Area		

Murphy Surveys Ltd. Disclaimer

The user or recipient of this survey data understands and acknowledges this data may be inaccurate or contain errors or omissions and the user or recipient assumes full responsibility for any risks or damages resulting from, arising from, or in connection with any use of or reliance upon data displayed herein. Although significant care has been exercised to produce surveys that satisfy survey accuracy standards, these surveys are only as accurate as the source data from which they were compiled. Although all reasonable steps have been taken to locate all features visible at the time of the survey, there is no guarantee that all will be shown on the drawing, as some above ground features may have obstructed the survey. Wherever possible, areas unable to be surveyed will be labelled as "UTS".

The Company shall not be liable for any inaccuracy of the data provided beyond the specified scale or accuracy, or for any matters resulting from their use for purposes other than that stated in the Contract. No liability shall attach to the Surveyor in respect of any consequential loss or damages suffered by the Client.

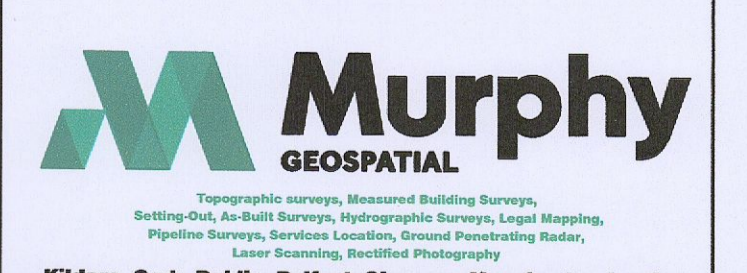
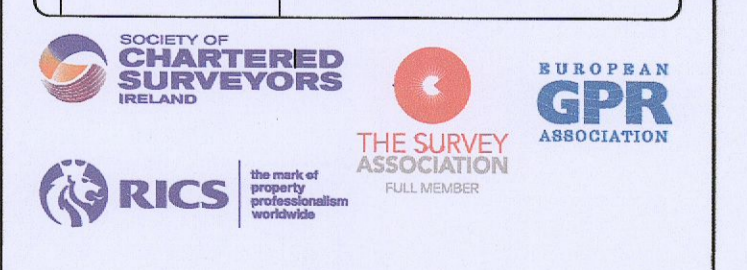
The Client must promptly notify the Company of any errors in mapping of which it becomes aware. If misleading, inaccurate or otherwise inappropriate information is brought to the Company's attention or the Company itself identifies any such imprecision or error in a survey, it shall use its reasonable endeavours to fix or remove it and if necessary in certain instances, the Company being on notice of any such misleading, inaccurate or otherwise inappropriate information, it will re-conduct the survey and reproduce the data to within the specified scale or accuracy.



Map Sheet Layout:

Surveyed by: HM	Date: 16.03.2022	Datum: Mellin Head
Drawn by: CSJ	Date: 16.03.2022	Cell System: Irish National Grid (ITM15S)
Checked by: PK	Date: 16.03.2022	Irish National Grid (ITM15S)

No	Date	Description
0	06.2020	First Drawing
1	16.03.2022	Details added, Elevations added
2	11.11.2022	Design/ Foundation Update
3	28.11.2022	Tolerances & Layout Update



Kildare Cork Dublin Belfast Glasgow Manchester London

Head Office
Global House
Kilcullen Business Campus
Kilcullen Co. Kildare
Phone: (+353) 045 484040
Fax: (+353) 045 484004
Email: info@murphysurveys.ie

Client:	BOC Gases Ireland
Project:	BOC Gases Ireland at Unit 10 JFK Drive
Date:	16.03.2022
Scale:	As shown @ A1
Description:	Existing & Proposed Elevation
Drawing Number:	MGS39042_EL_Rev3_11

© Copyright 2022 MURPHY GEOSPATIAL LTD