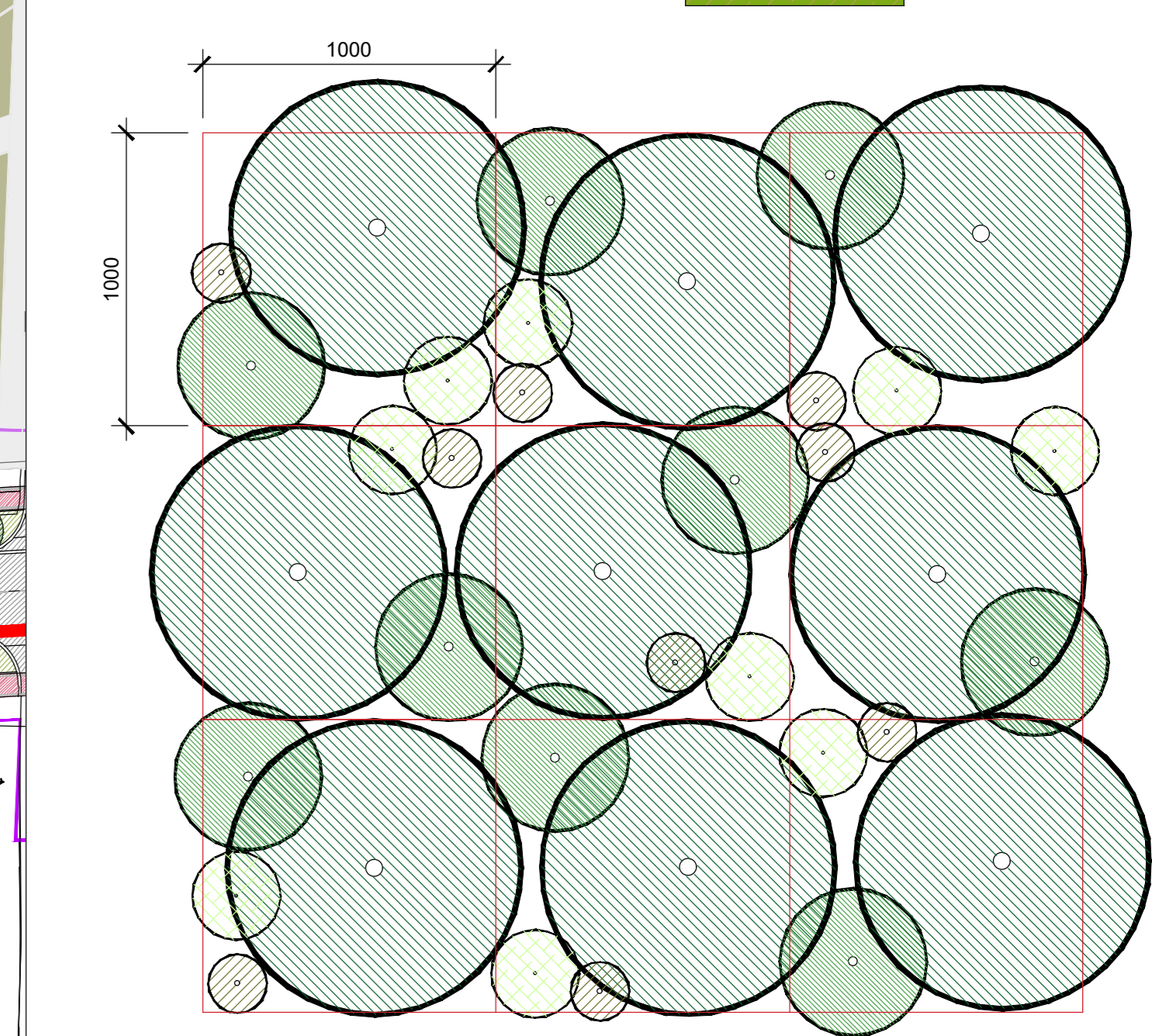


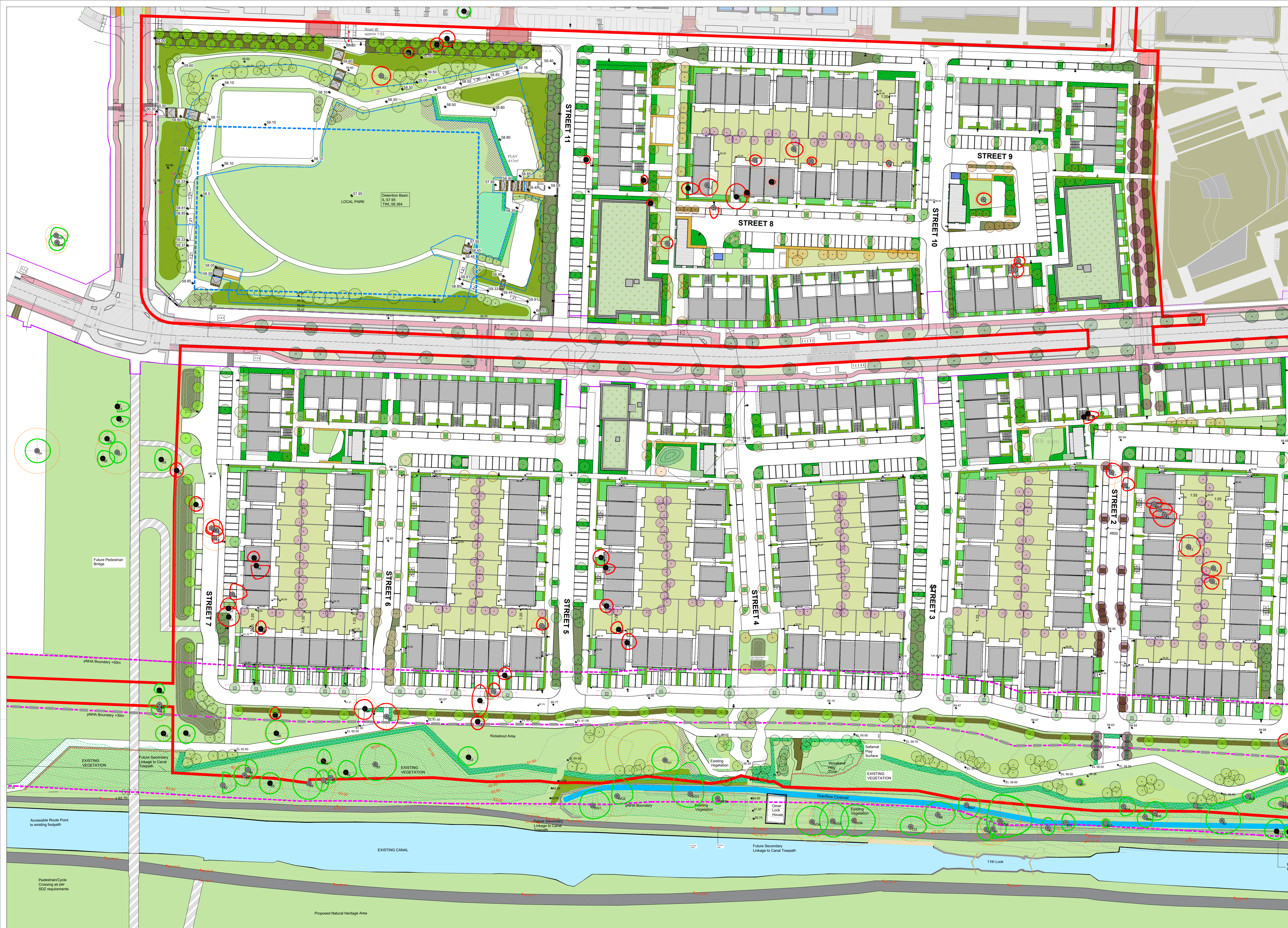


Key Plan - Scale 1:5000

Miyawaki Technique Mix Detail Native Woodland Planting Scale 1:20



- Approximately 34 plants per sq m
- Trees
 - Pinus sylvestris* (*)
 - Quercus robur* (*)
 - Populus tremula* (*)
- Sub-Trees
 - Prunus avium* (*)
 - Sorbus aria* (*)
 - Sorbus aucuparia* (*)
- Shrubs
 - Cornus sanguinea* (*)
 - Rhamnus officinalis* (*)
 - Viburnum opulus* (*)
 - Rosa canina* (*)
 - Eurospira europaeus* (*)
- Small Shrubs/Grasses
 - Camunor repens* (*)
 - Polystichum setiferum* (*)
 - Asplenium scolopendrium* (*)
 - Rosa pimpinifolia* (*)



- SOFT LANDSCAPE**
 - Existing Trees
 - To be retained
 - To be removed
 - Existing Vegetation to Canal boundary and Fossil Bed
 - Proposed Street Trees (min. 200mm topsoil depth)
 - To be retained and enhanced
 - To be removed
 - Tree Pit in Paving - Structural Soil where shown
 - Link Street
 - To include the following species: *Fila cordata*, *Greenspire*, *Platanus orientalis*, *Mincet*.
 - Green Corridor
 - To include the following species: *Acer campestre* (*), *Fila cordata* (*Greenspire*), *Fagus sylvatica*.
 - Local Streets
 - To include the following species: *Alnus glutinosa* (*), *Betula pubescens* (*), *Carpinus betulus* (*), *Acer camp* (*Elegant*).
- Small Residential Streets/Homesizes**
 - 16-18cm grith. To include the following species: *Corylus avellana* (*), *Pinus uncinata* (*), *Prunus cerasifera* (*Chantrelle*), *Magnolia kobus*.
- Proposed Open Space Trees** (min. 800mm topsoil depth)
 - Parkland Trees**
 - 12-14cm - 14-16cm grith. To include the following species: *Acer campestre* (*), *Alnus glutinosa* (*), *Betula pendula* (*), *Fagus sylvatica* (*), *Pinus sylvestris* (*), *Prunus avium* (*), *Prunus padus* (*), *Sorbus aria*, *Sorbus aucuparia* (*), *Quercus robur* (*), *Betula nigra*, *Crataegus monogyna* (*), *Salix alba* (*Travis*), *Ulmus laevis*, *Corylus avellana* (*), *Castanea sativa* (*), *Ligustrum ssp* (5% of trees to be 30-35cm grith).
 - Urban Edge**
 - 16-18cm grith. To include the following species: *Acer campestre* (*Elegant*), *Fila cordata* (*Greenspire*), *Ulmus laevis*, *Betula pubescens* (*).
- Proposed Communal Open Spaces/Residential Trees**
 - Communal Open Space/Play/Duplex Trees/Specimen Ornamental**
 - Standard Trees: 14-16cm grith. To include: *Makia* (*Everest*), *Lindodendron tulipifera*, *Prunus serotina*, *Magnolia kobus*, *Sorbus aucuparia* (*Red*), *Crataegus laevigata* (*Paul's Scarlet*), *Malus domestica* (*Empire*), *Asplenium nidus*, *Malus multiflora* (*Parrotia*), *Salix caprea* (*Jaquemoni*), *Ligustrum sylvaticum* (*5%* of trees to be 30-35cm grith).
 - Rear Garden Trees**
 - 8-10 cm grith. To include the following species: *Betula pendula* (*), *Prunus avium* (*), *Makia* (*Everest*).
 - Native Woodland Planting**
 - (min. 450mm topsoil depth)
 - BIR 60-120cm (50%) & 4-10cm grith (10%) @ 1 per m² to include the following species: *Alnus glutinosa* (*), *Betula pendula* (*), *Betula pubescens* (*), *Crataegus monogyna* (*), *Prunus melanocarpa* (*), *Quercus robur* (*), *Prunus avium* (*), *Acer campestre* (*), *Prunus serotina* (*), *Salix ssp* (*), *Prunus padus* (*), *Corylus avellana* (*), *Prunus sylvatica* (*), *Ligustrum vulgatum* (*).
 - Street/Public Realm Planting**
 - Area under control of management company (min. 450mm topsoil depth)
 - Container Green Streets 2m min @ 5 per m². To include the following: *Larodendron tulipifera* (*), *Hydrangea ssp.*, *Sarcococca ssp* (*), *Polystichum ssp.*, *Dryopteris ssp.*, *Erica ssp* (*), *Luzula ssp.*, *Clivia corniculata* (*Empire*), *Asplenium nidus*, *Malus aquifolium* (*), *Salix caprea* (*Jaquemoni*), *Lonicera pileata*, *Ulmus minor*, *Viburnum davidii*, *Hebe helix*, *Viburnum opulus* (*), *Ajuga reptans* (*), *Ligustrum sylvaticum* (*), *Lonicera periclymenum* (*), *Malina cerifera*, *Hebeboris niger* (*), *Heuchera maxima*, *Lobelia formosa*.
 - Front Garden Planting**
 - (Shrubs min. 450mm topsoil depth / Perennials min. 300mm topsoil depth)
 - 75% Shrub, 25% Perennial @ 5 per m². Container Green, 2hr Low maintenance planting to include species from the above list of shrubs.
 - Residential Planting**
 - (min. 450mm topsoil depth)
 - Double-staggered, BIR, min 60-80cm height
 - Conocarpus aristatus* (E), *Colobryzium latifolium* (E), *Laurus nobilis* (E), *Rhoeo maritima* (E), *Ligustrum vulgatum* (*), *Panicum polystachion* (E), *Chrysanthemum ssp.*, *Memora aquifolium* (E), *To include a 10% mix of *Corylus avellana* (*), *Ligustrum vulgatum* (*), and *Viburnum opulus* (*).*
 - Open Space Hedge Planting**
 - (min. 450mm topsoil depth)
 - Double-staggered, BIR, min 60-80cm height
 - Crataegus monogyna* (*), *Corylus avellana* (*), *Eurospira europaeus* (*), *Ulmus laevis* (*), *Prunus avium* (*), *Prunus padus* (*), *Rosa canina* (*).
 - Open Space Native Hedge**
 - (min. 200mm topsoil depth)
 - Double-staggered, Bareroot, 60-120cm. To include: *Crataegus monogyna* (*), *Corylus avellana* (*), *Eurospira europaeus* (*), *Ulmus laevis* (*), *Prunus avium* (*), *Prunus padus* (*), *Rosa canina* (*).
 - Planted Swale**
 - (min. 300 / 450 mm topsoil depth)
 - To be seeded with native & pollinator perennial wildflowers harvested from the Cumbria area using the green hay seeding technique or native seed mix to be agreed w/ project ecologist and SOCC Parks department, subject to approval of NPSW if required. This approach will ensure consistency w/ Ecological Survey of Cumbria (EPC) L16, 2018. Typical species local to the area and suitable for swale planting: *Lythrum salicaria* (*), *Silene maritima* (*), *Phacelia aurea* (*), *Deschampsia cespitosa* (*), *Prunella vulgaris* (*), *Oenothera biennis* (*).
 - Open Space Grass Lawn**
 - (min. 300 / 450 mm topsoil depth)
 - To be seeded with native & pollinator perennial wildflowers harvested from the Cumbria area using the green hay seeding technique or native seed mix to be agreed w/ project ecologist and SOCC Parks department, subject to approval of NPSW if required. This approach will ensure consistency w/ Ecological Survey of Cumbria (EPC) L16, 2018. Typical species local to the area and suitable for swale planting: *Lythrum salicaria* (*), *Silene maritima* (*), *Phacelia aurea* (*), *Deschampsia cespitosa* (*), *Prunella vulgaris* (*), *Oenothera biennis* (*).
 - Amenity Grass Lawn**
 - (min. 200mm topsoil depth)
 - Courme Urban/Play Grass Seed Mix or similar and approved.
 - Garden Lawn**
 - (min. 200mm topsoil depth)
 - Courme Green/Urban Grass Seed Mix or similar and approved.
 - Native Meadow Grass**
 - (min. 200mm topsoil depth)
 - To be seeded with native & pollinator perennial wildflowers harvested from the Cumbria area using the green hay seeding technique or native seed mix to be agreed w/ project ecologist and SOCC Parks department, subject to approval of NPSW if required. This approach will ensure consistency w/ Ecological Survey of Cumbria (EPC) L16, 2018. Typical species local to the area and suitable for swale planting: *Lythrum salicaria* (*), *Silene maritima* (*), *Phacelia aurea* (*), *Deschampsia cespitosa* (*), *Prunella vulgaris* (*), *Oenothera biennis* (*).
 - Bull planting in grass**
 - (min. 200mm topsoil depth)
 - Bulls to be incorporated at 30 bulls per sq. meter. Moving to be reduced in accordance with suppliers instructions. To include: *Crocus tommasinianus* (*Barra Purple*), *Crocus vernus* (*Jeanne d'Arc*), *Crocus vernus* (*Soldier Yellow*), *Muscari armstrongii*, *Hyacinthoides non-scriptus*, *Narcissus* (*Jack Snipe*), *Narcissus recurvus*, *Narcissus* (*Barra Purple*).
 - Biorotation Area**
 - (min. 300 / 450 mm topsoil depth)
 - Planting list as per Swale proposed. (refer to Engineer's drawings no: CLB-1A-94-SW-GTM-DR-DBFL-CE-1320 - SUDS Overview layout).
 - Green Wall Planting with trellis**
 - (min. 450mm topsoil depth)
 - Metal climbing structure along bin stores facades. Stainless steel wire trellis. Support: Jakob Rope Systems or similar approved. To include: *Hebe helix*, *Lonicera periclymenum*, *Pyraechtha coccinea*.
 - Wet Area**
 - Boundaries areas receiving runoff from adjacent leases (refer to Engineer's drawings no: CLB-1A-94-SW-GTM-DR-DBFL-CE-1320 - SUDS Overview layout).
 - Proposed Green Roof**
 - Soilium based as per engineers and architect specifications.

murray & associates landscape architecture

16 The Square Building, 40-42 Colindale Avenue, London NW9 1UH, UK. Tel: 020 884 2000. Email: info@murrayandassociates.com

0 / 30/1/22 Planning Compliance FT/IS MB

PROJECT NAME: RESIDENTIAL DEVELOPMENT CLOUBURBS

SHEET FILE: Soft Landscape Plan - 01/02

SHEET NO: 1738_PL_C_P_04.1

SCALE: 1:500

DATE: 30/11/22

STATUS: Planning Compliance

Copyright Murray and Associates, 2022