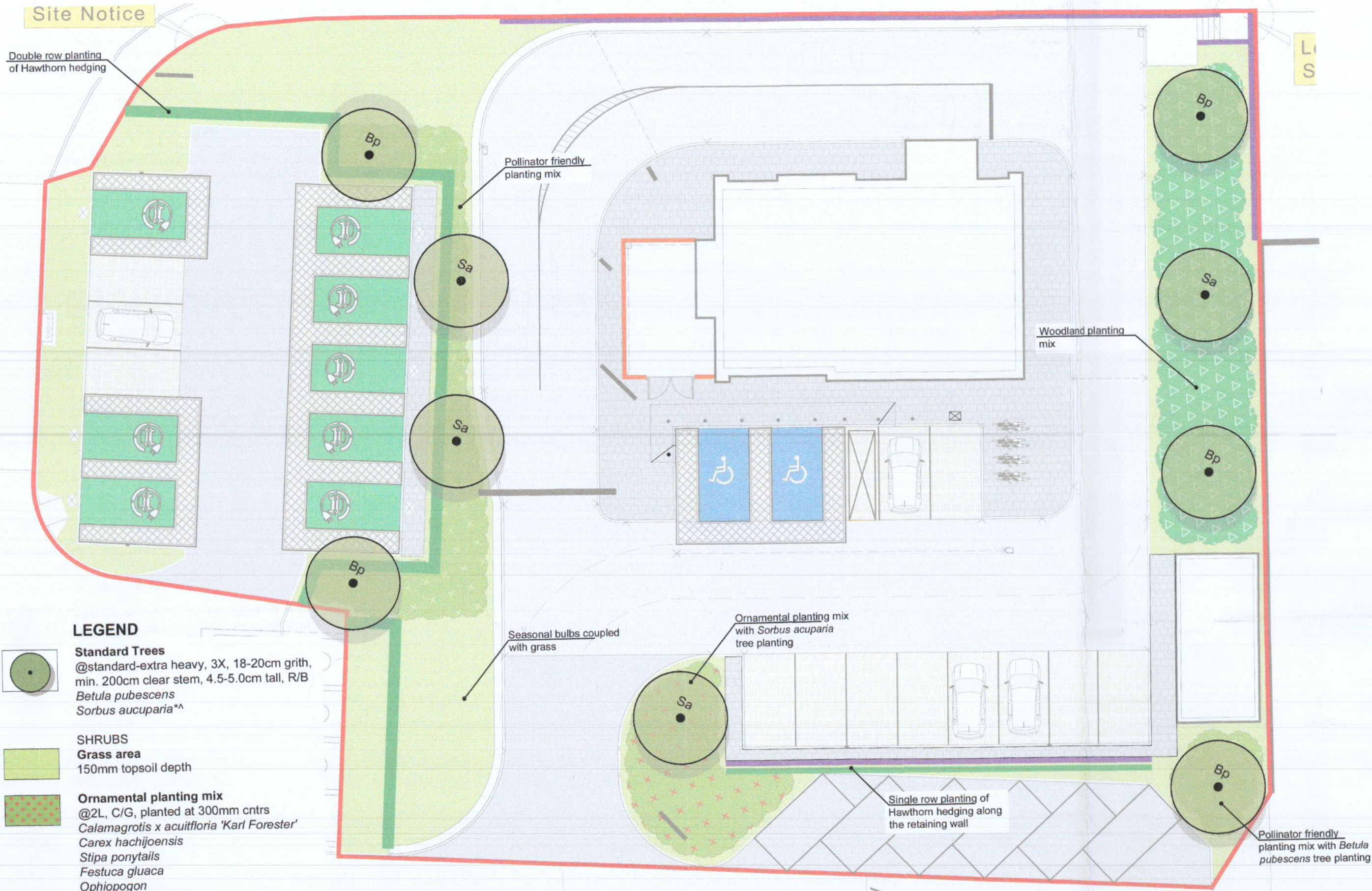


# PROPOSED SITE DEVELOPMENT AT TOOTHENHILL

Soft Landscape Masterplan

sc1:200

## Site Notice



### LEGEND

**Standard Trees**  
 @standard-extra heavy, 3X, 18-20cm grith, min. 200cm clear stem, 4.5-5.0cm tall, R/B  
*Betula pubescens*  
*Sorbus aucuparia* \*\*

**SHRUBS**  
**Grass area**  
 150mm topsoil depth

**Ornamental planting mix**  
 @2L, C/G, planted at 300mm cntrs  
*Calamagrotis x acutiflora* 'Karl Forester'  
*Carex hachijoensis*  
*Stipa ponytails*  
*Festuca gluaca*  
*Ophiopogon*  
*Miscanthus senisis*  
*Luzula sylvestris*

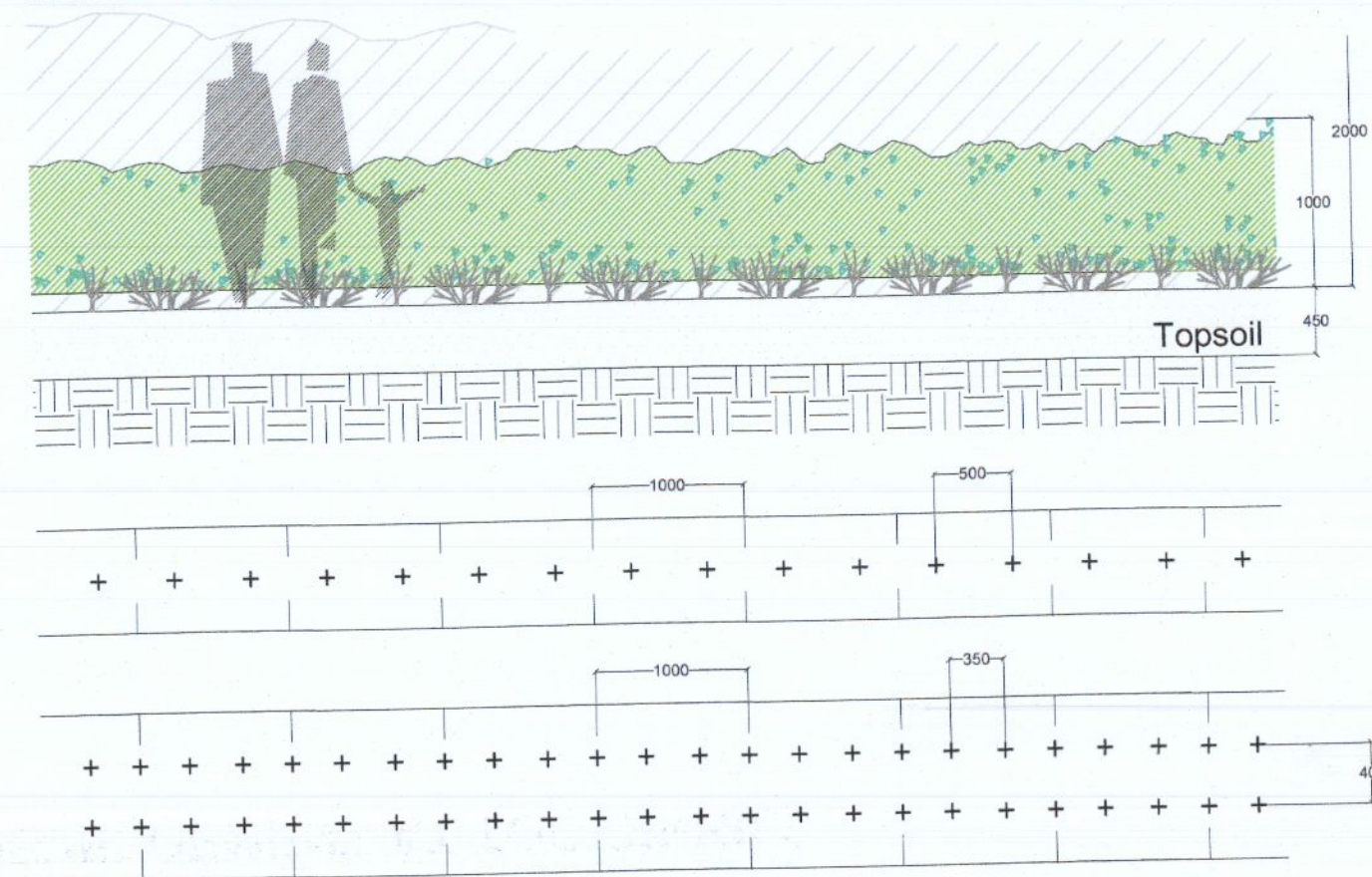
**Planted for nature**  
 @2L, C/G, planted at 300mm cntrs  
*Anemone x hybrida*  
*Digitalis purpurea*  
*Geranium Roxanne*  
*Pulmonaria spp.*  
*Berginia cordiflora*  
*Helleborous foetidus*  
*Viburnum tinus*  
*Erica spp.*  
*Verbena x hybrida*  
*Campanula persicifolia*

**Seasonal Bulbs** @30 bulbs per sq.m.  
 50% *Narcissus* 'February Gold'  
 20% *Hyacinthoides non-scripta*  
 15% *Galanthus nivalis*  
 15% *Crocus spp.*

**Woodland Planting Mix**  
 @b/r 1.2, 1.5m tall, 1.5m ctr  
*Quercus robur* \*\*  
*Quercus petraea* \*  
*Betula pubescens* \*  
*Ilex aquifolium* \*\*  
*Betula pendula* \*\*

**Hawthorn hedging**  
 @B/R, 1.0m height, 300cm cntrs  
*Crataegus monogyna*

### HEDGE PLANTING detail sc1/50



NOTE: Screen hedge to be planted as per planting schedule. Plants shall be 1m tall, and be shall conform to BS 3936 - Part 1: Nursery stock specification for trees and shrubs. Planting strip to be 700mm wide x 450mm deep with cultivated and evenly incorporated organic manure 100mm layer over area of strip, fertiliser 35g, 50mm depth bark mulch dressing on completion of planting.

NOTE: All hedges shall be planted at a density of 3 plants per linear metre in a single row. Where indicated, hedges shall be planted at a density of 6 plants per linear metre in a double staggered row, with 3 plants per linear metre in each row and 400mm between rows.

Tree planting under the scheme has been developed to blend the development in to its surrounding environment. Tree points within the development. The tree species selected will maximise food and nectar sources for birds and invertebrates. Trees will be planted as Standard and Heavy Standard to provide a reasonable degree of instant maturity to the development. All trees shall be planted between the months of Nov and March. The trees shall be purchased from a reputable nursery as rootball specimens and final order to be agreed by Landscape Architect; The trees shall be planted on delivery. If this is not possible due to weather conditions (wet or frosty), the plants must be healed in. Maintenance Watering is essential during the first 2 growing seasons regardless of the weather conditions - 1000Lt / Tree/ Month.

**Methodology and Guidance Notes:** The tree pit should have a diameter at least 100mm greater than that of the root system, with the depth not exceeding the rootball. Any glazed or smeared sides caused by digging shall be scarified with the use of a fork. The tree will be positioned in the centre of the planting pit at the correct depth, taking into account the root flare and finished level. Prior to backfilling the hessian twine/wire cage supporting the rootball shall be loosened or removed. Backfilling shall be carried out in layers of 150mm, ensuring the tree is held upright. At each stage the fill will be carefully firmed in to eliminate air pockets under and around the root system. The final layer of backfill will not be consolidated, but should be of a sufficient depth to allow for settlement and mulching. Formative pruning should be carried out if required, removing dead, damaged, crossing or diseased branches. Refer to Tree planting specification for tree anchoring system. All trees planting operation will be carried in accordance with BS8545:2014 Trees: from nursery to independence in the landscape -Recommendations.

STANDARD TREES				Quantity
Code	Scientific name	Common name	Size	
Bp	<i>Betula pubescens</i>	Birch	r/b, 3x trpt 18-20cm grith, 4.5-5.0m	5
Sa	<i>Sorbus aucuparia</i> **	Rowan	r/b, 3x trpt 18-20cm grith, 4.5-5.0m	4

ORNAMENTAL PLANTING MIX				Quantity
Code	Scientific name	Common name	Size	
Ca	<i>Calamagrotis x acutiflora</i> 'Karl Forester'	Reedgrass	2L, c/g, planted at 300mm cntrs	45
Ch	<i>Carex hachijoensis</i>	Japanese sedge	2L, c/g, planted at 300mm cntrs	45
Sp	<i>Stipa ponytails</i>	Mexican feather grass	2L, c/g, planted at 300mm cntrs	45
Fg	<i>Festuca gluaca</i>	Festuca gluaca	2L, c/g, planted at 300mm cntrs	45
Op	<i>Ophiopogon planiscapus</i> 'Nigrescens	Black mondo grass	2L, c/g, planted at 300mm cntrs	45
Ms	<i>Miscanthus senisis</i>	Chinese silver grass	2L, c/g, planted at 300mm cntrs	45
Ls	<i>Luzula sylvestris</i>	Greater Woodrush	2L, c/g, planted at 300mm cntrs	45

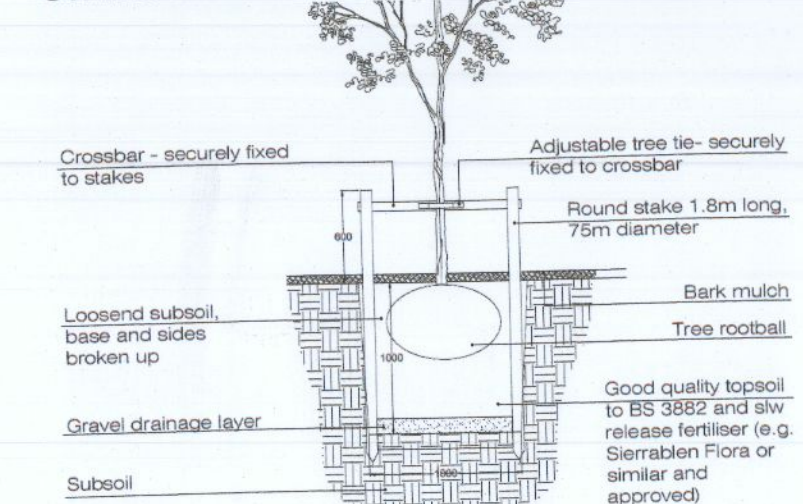
PLANTED FOR NATURE				Quantity
Code	Scientific name	Common name	Size	
Ah	<i>Anemone x hybrida</i>	Japanese anemone	2L, c/g, planted at 300mm cntrs	79
Dp	<i>Digitalis purpurea</i>	Lady's glove	2L, c/g, planted at 300mm cntrs	79
Gr	<i>Geranium Roxanne</i>	Cranesbill	2L, c/g, planted at 300mm cntrs	79
Psp	<i>Pulmonaria spp.</i>	Lungwort	2L, c/g, planted at 300mm cntrs	79
Bc	<i>Berginia cordiflora</i>	Heartleaf Bergenia	2L, c/g, planted at 300mm cntrs	79
Hf	<i>Helleborous foetidus</i>	Stinking hellebore	2L, c/g, planted at 300mm cntrs	79
Vt	<i>Viburnum tinus</i>	Laurustinus	2L, c/g, planted at 300mm cntrs	79
Esp	<i>Erica spp.</i>	Heath	2L, c/g, planted at 300mm cntrs	79
Vh	<i>Verbena x hybrida</i>	Verbena	2L, c/g, planted at 300mm cntrs	79
Cp	<i>Campanula persicifolia</i>	Peach-leaved bellflower	2L, c/g, planted at 300mm cntrs	79

Woodland Planting mix - total 136 sq.m				Quantity
Code	Scientific name	Common name	Size	
Qr	<i>Quercus robur</i> **	Sessile Oak	b/r 1.2, 1.5m tall, 1.5m ctr	40
Qp	<i>Quercus petraea</i> *	Pedunculate Oak	b/r 1.2, 1.5m tall, 1.5m ctr	40
Bp	<i>Betula pubescens</i> *	Downy Birch	b/r 1.2, 1.5m tall, 1.5m ctr	40
la	<i>Ilex aquifolium</i> **	Holly	b/r 1.2, 1.5m tall, 1.5m ctr	40
Bpe	<i>Betula pendula</i> **	Silver Birch	b/r 1.2, 1.5m tall, 1.5m ctr	40

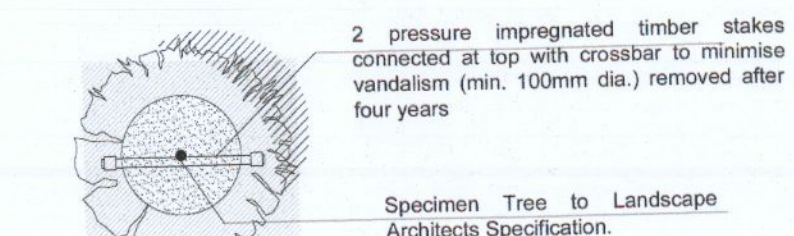
\* Species Native to Ireland  
 ^ Plants for Pollinators

These plants will provide nectar and pollen for bees and the many other types of pollinating insects. All selected species have an ornamental, native biodiversity or pollinator-stimulating purpose. Selection is based on the "All Ireland pollinator Plan".

### STANDARD ROOTBALL TREE detail sc1/50



Square planting pit shall be large enough to accommodate tree roots. Pit to be backfilled with a mix of topsoil, planting compost and polymer granular. The bottom and sides of pit to be broken up by forking prior to planting.



+ 087 910 1600  
 + info@gannonandassociates.ie  
 + Terenure Enterprise Centre  
 17 Rathfarnham Road, D6W

**gannon + associates**

E	06/12/22	Soft Landscape Plan	PS	JG
REV	DATE	REVISION	DRAWN	CHECKED

CLIENT  
 PETROGAS GROUP LTD

PROJECT TITLE  
 Proposed site development at Tootehill, Rathcoole, Co.Dublin

PROJECT ARCHITECT  
 J A GORMAN

SHEET TITLE  
 Soft Landscape Plan

SHEET NO.  
 21103\_PA\_E\_SLP

SCALE  
 as shown

STAGE  
 Planning Application

DATE  
 December 2022

Copyright Gannon and Associates, 2022