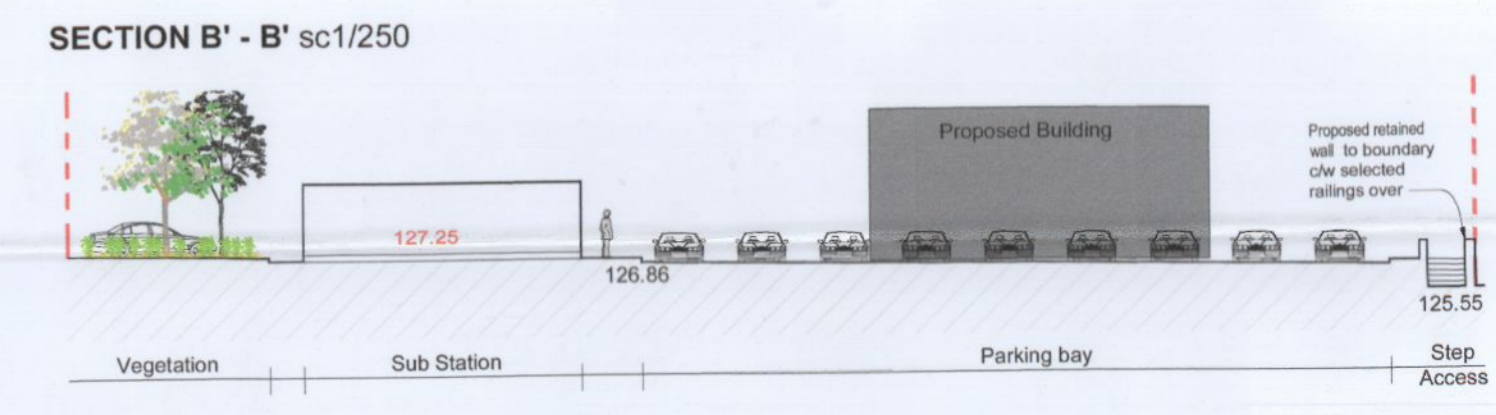
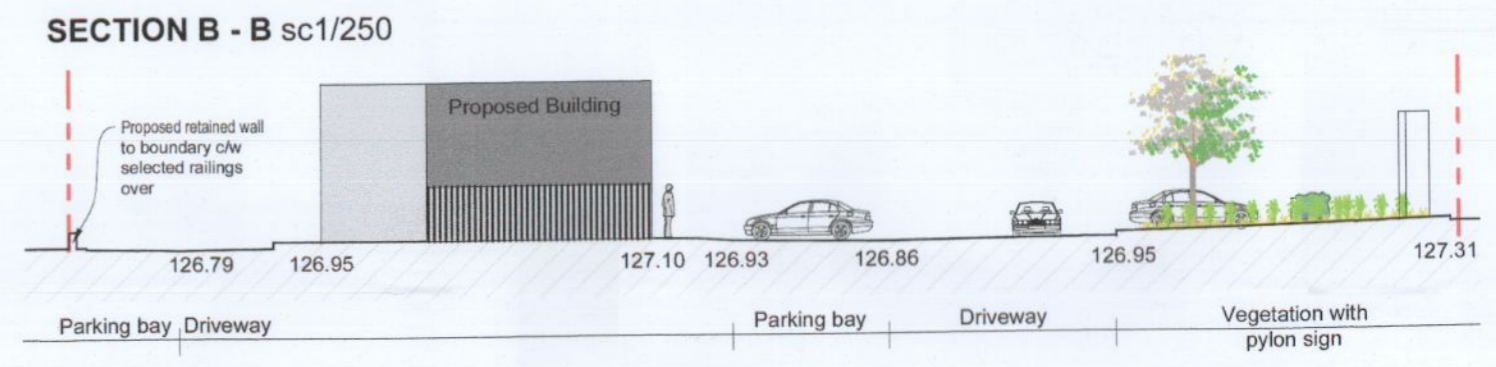
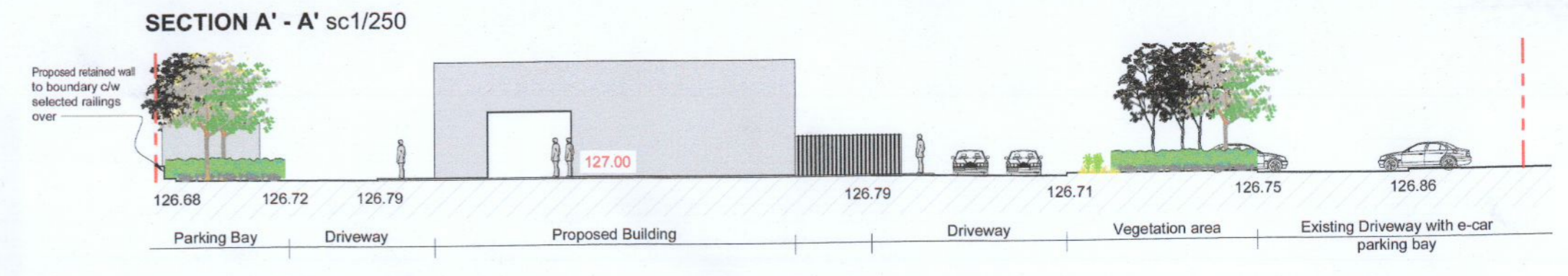


PROPOSED SITE DEVELOPMENT AT TOOTENHILL

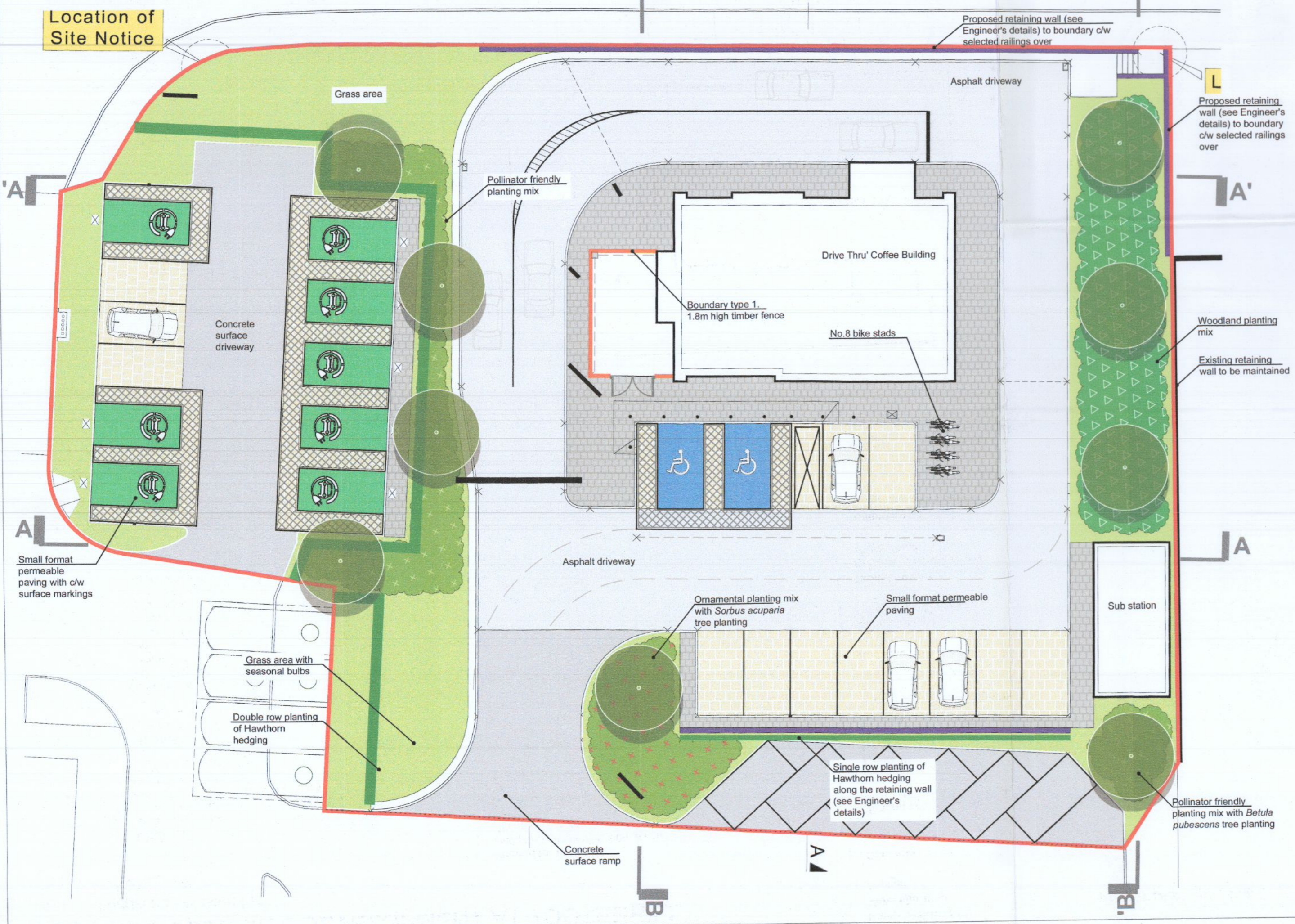
Landscape Masterplan
sc1:200

- LEGEND**
- Standard Trees**
@standard-extra heavy, 3X, 18-20cm grith, min. 200cm clear stem, 4.5-5.0cm tall, R/B
Betula pubescens
*Sorbus aucuparia***
- SHRUBS**
Grass area
150mm topsoil depth
- Ornamental planting mix**
@2L, C/G, planted at 300mm cntrs
Calamagrotis x acuitiflora 'Karl Forester'
Carex hachijoensis
Stipa ponytails
Festuca gluca
Ophiopogon
Miscanthus senisis
Luzula sylvestris
- Hawthorn hedging**
@B/R, 1.0m height, 300cm cntrs
Crataegus monogyna
- Planted for nature**
@2L, C/G, planted at 300mm cntrs
Anemone x hybrida
Digitalis purpurea
Geranium Roxanne
Pulmonaria spp.
Berginia cordiflora
Helleborus foetidus
Viburnum tinus
Erica spp.
Verbena x hybrida
Campanula persicifolia
- Seasonal Bulbs** @30 bulbs per sq.m.
50% *Narcissus 'February Gold'*
20% *Hyacinthoides non-scripta*
15% *Galanthus nivalis*
15% *Crocus spp.*
- Woodland Planting Mix**
@b/r 1.2, 1.5m tall, 1.5m ctr
Quercus robur **
Quercus petraea *
Betula pubescens *
Ilex aquifolium **
Betula pendula **

- HARD LANDSCAPE**
- Vehicular road
Asphalt
 - Concrete
 - Parking bay
Permeable small format paving
 - Footpath
Concrete
 - Footpath
Permeable small format paving
- BOUNDARY TREATMENT**
- Red Line Boundary
 - Boundary type 1.
1.8m high timber fence
 - Boundary type 2.
Retaining wall with railing (to Engineer's details)
 - Boundary type 3.
Existing retaining wall



REFERENCE IMAGES



+ 087 910 1600
+ info@gannonandassociates.ie
+ Terenure Enterprise Centre
17 Rathfarnham Road, D6W

gannon + associates

E	06/12/22	Landscape Plan	PS	JG
REV DATE	REVISION		DRAWN	CHECKED

CLIENT
PETROGAS GROUP LTD

PROJECT TITLE
Proposed site development at Tootenhill, Rathcoole, Co.Dublin

PROJECT ARCHITECT
J A GORMAN

SHEET TITLE
Landscape Plan

SHEET NO. 21103_PA_E_LP	SHEET SIZE A2
SCALE as shown	REVISION E
STAGE Planning Application	DATE December 2022

il IRISH LANDSCAPE INSTITUTE
Copyright Gannon and Associates, 2022