

**Mix Commercial & Residential Development,**  
Cuckoo nest, Tallaght, Dublin.

---

*Landscape Rationale*



# CUCKOO NEST PUB/ APARTMENT DEV

Design development - Site Location



Proposed Site  
Location



Ref: Google

# CUCKOO NEST PUB/ APARTMENT DEV

Design development - Site Location



Proposed Site Location

Potential continuation of Landscape strategy



**RMDA**  
LANDSCAPE ARCHITECTS + CONSULTANTS

Ref: Google

# CUCKOO NEST PUB/ APARTMENT DEV

Design development - Site Connections



Green Space

Link/ Connection between  
Cuckoo's Nest, Tallaght  
Theatre and Temple Woods

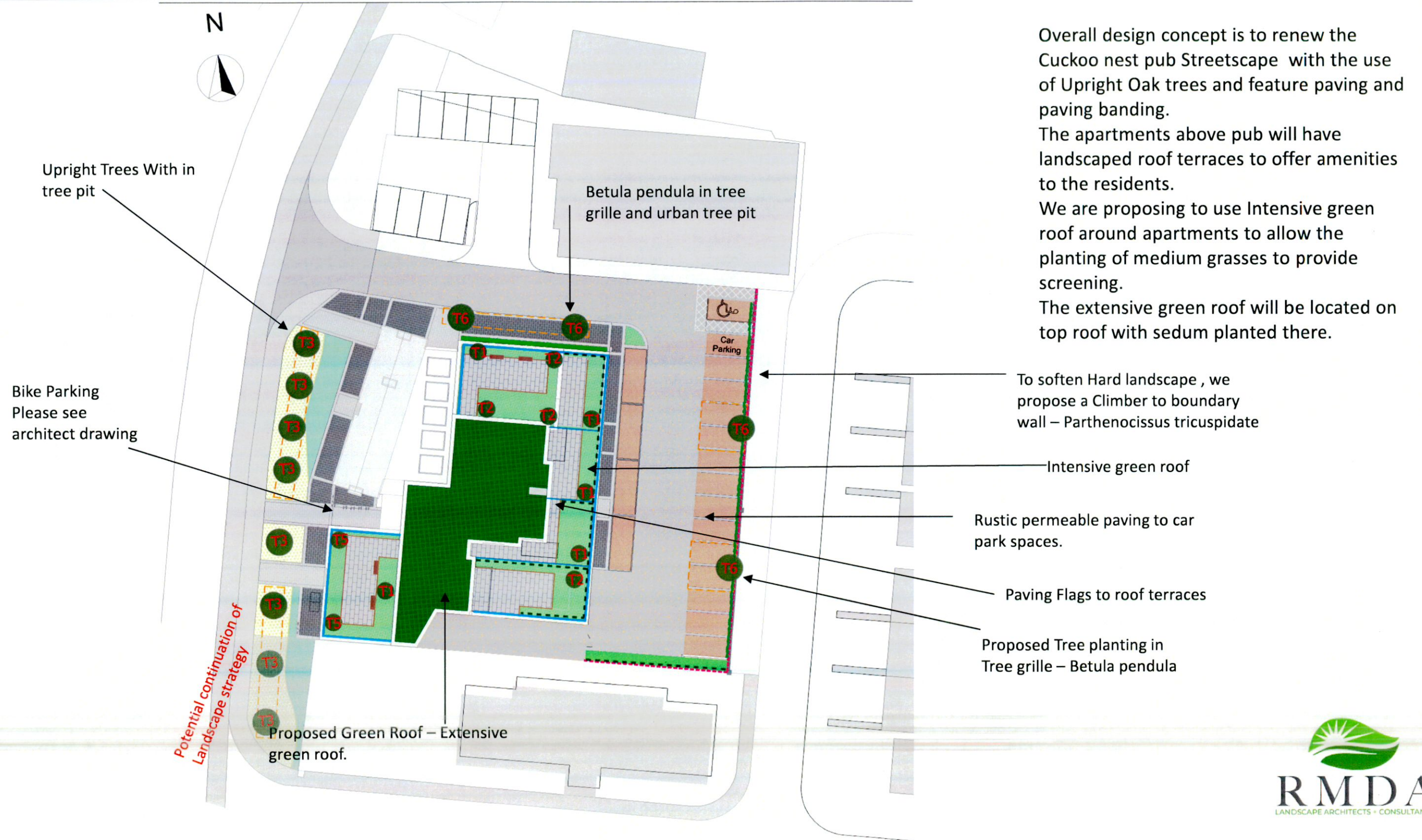
Link to green space

Ref: Google



# CUCKOO NEST PUB/ APARTMENT DEV

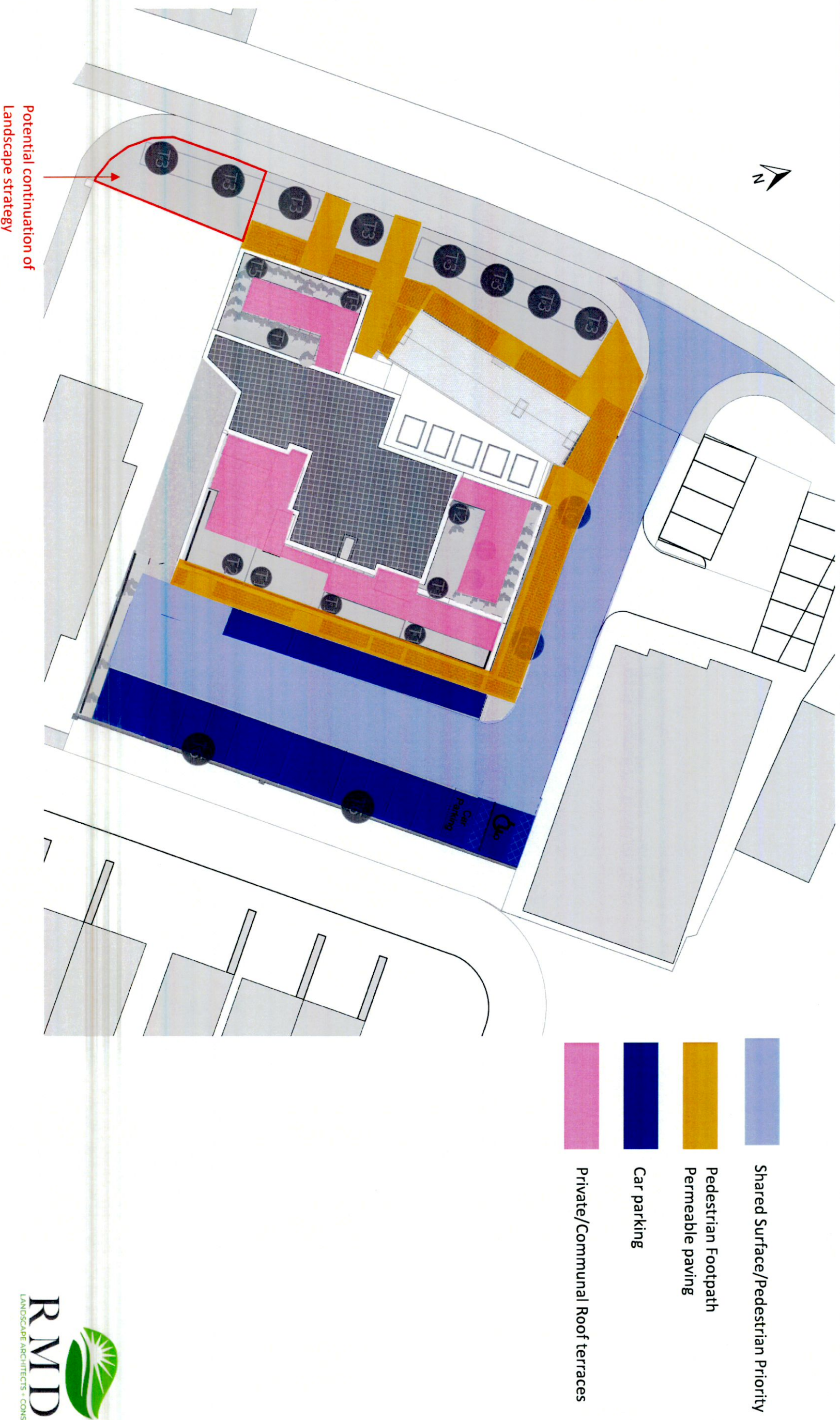
Design development - Proposed Landscape plan



Overall design concept is to renew the Cuckoo nest pub Streetscape with the use of Upright Oak trees and feature paving and paving banding. The apartments above pub will have landscaped roof terraces to offer amenities to the residents. We are proposing to use Intensive green roof around apartments to allow the planting of medium grasses to provide screening. The extensive green roof will be located on top roof with sedum planted there.

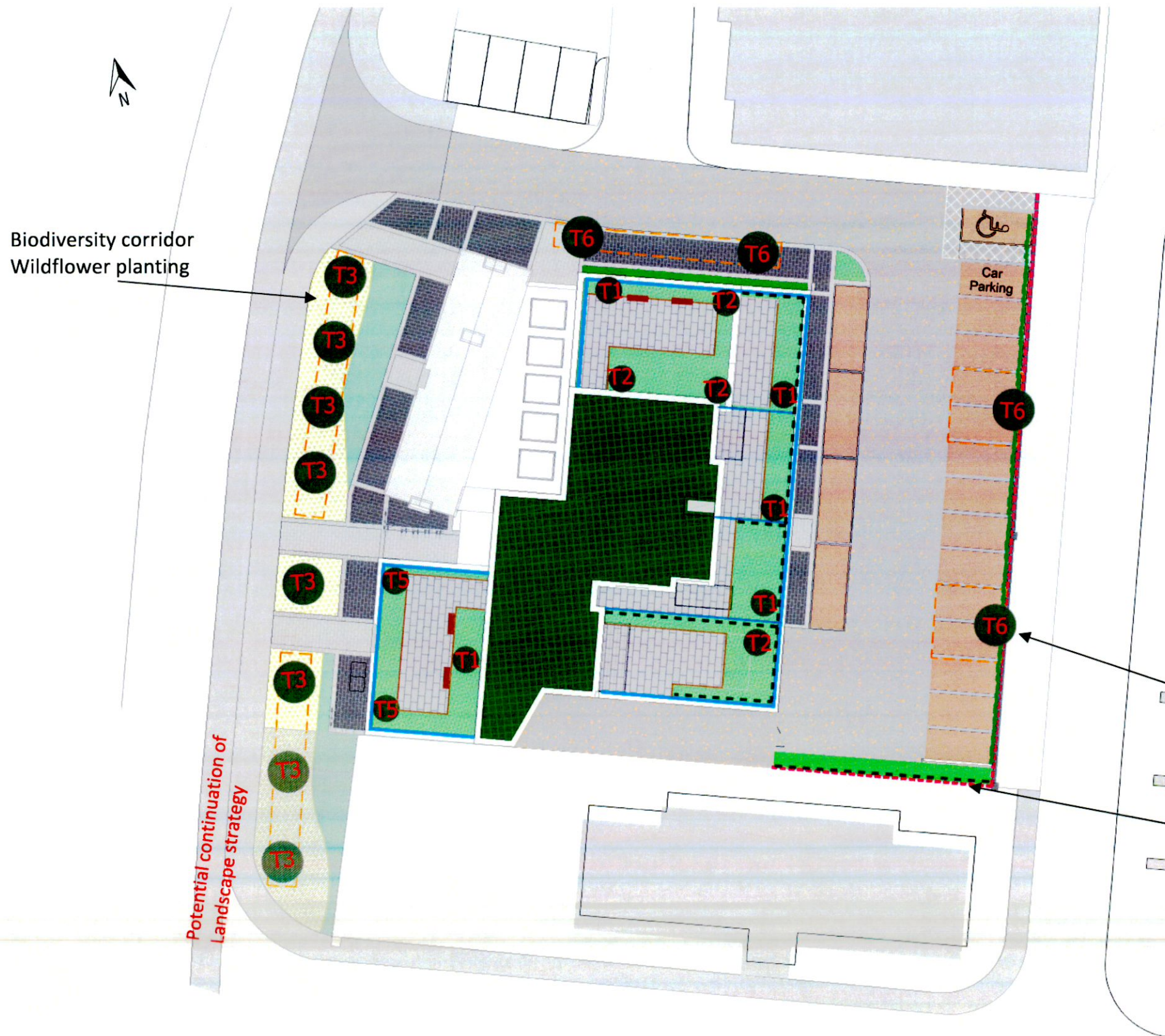
# CUCKOO NEST PUB/ APARTMENT DEV

Design development - Proposed Landscape plan -Rationale



# CUCKOO NEST PUB/ APARTMENT DEV

Design development - Proposed Landscape plan –  
Ground Floor



The apartments above pub will have landscaped areas and proposed biodiversity area to Front of proposed development. We propose to plant wildflower and Tree planting.



Biodiversity corridor  
Wildflower planting



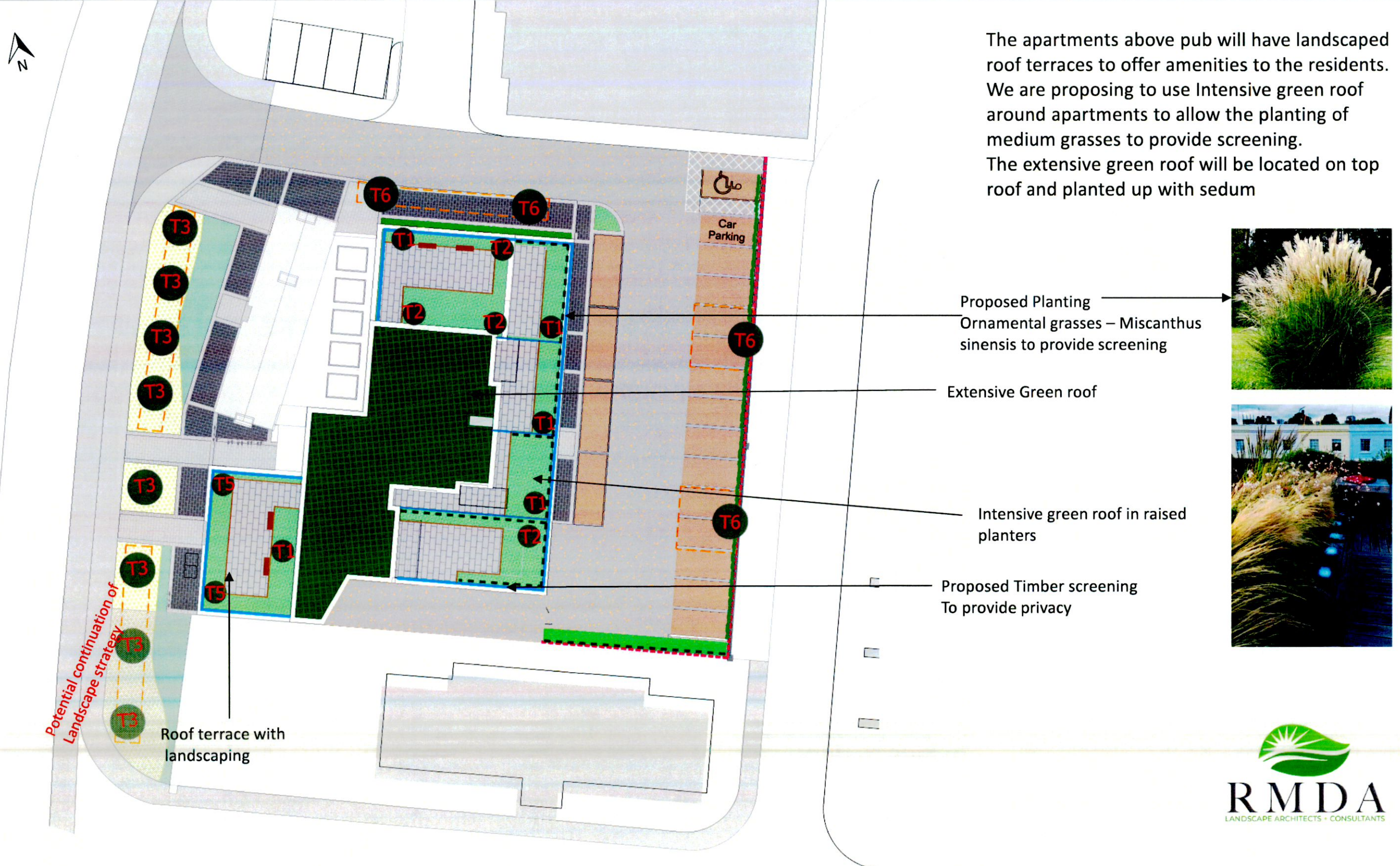
Proposed Tree Planting  
Betula pendula



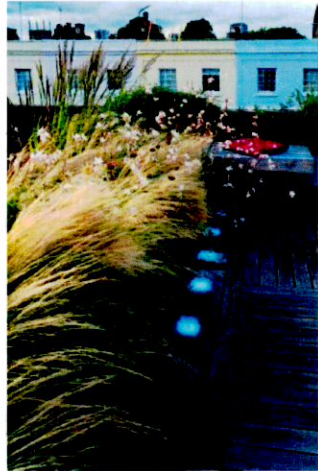
Urban Bat box  
location

# CUCKOO NEST PUB/ APARTMENT DEV

Design development - Proposed Landscape plan –Roof terraces



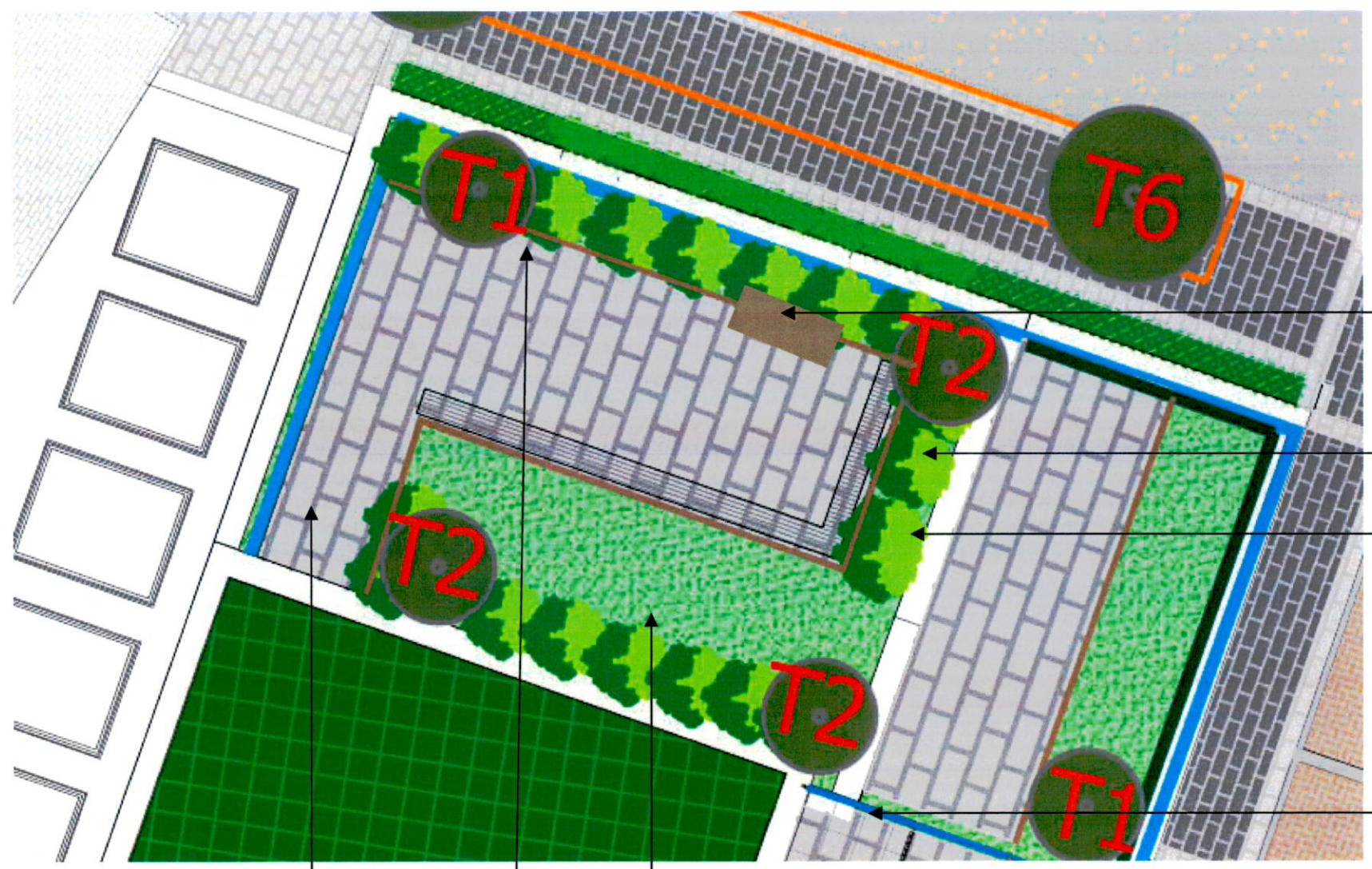
The apartments above pub will have landscaped roof terraces to offer amenities to the residents. We are proposing to use Intensive green roof around apartments to allow the planting of medium grasses to provide screening. The extensive green roof will be located on top roof and planted up with sedum





# CUCKOO NEST PUB/ APARTMENT DEV

## Design development - Proposed Roof terraces



Proposed seat built into raised planter



Proposed Planting  
Ornamental grasses – Miscanthus sinensis to provide screening



Proposed Raised Planter

Proposed Timber screening  
To provide privacy

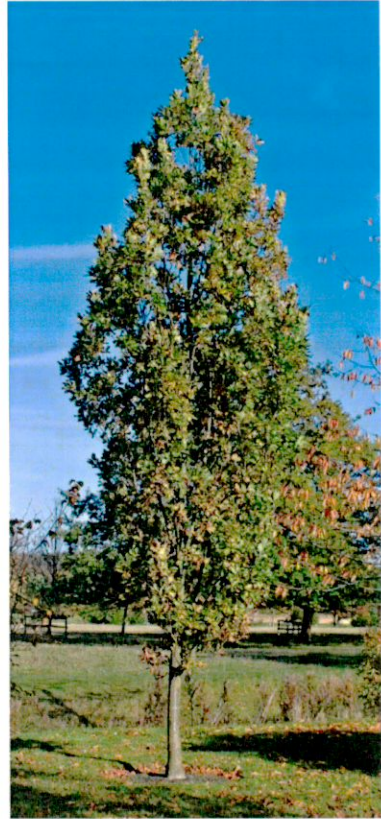
Roof terrace with landscaping

Intensive green roof in raised planters

Paving Flag Plank (natural)  
600 x200 mm

# CUCKOO NEST PUB/ APARTMENT DEV

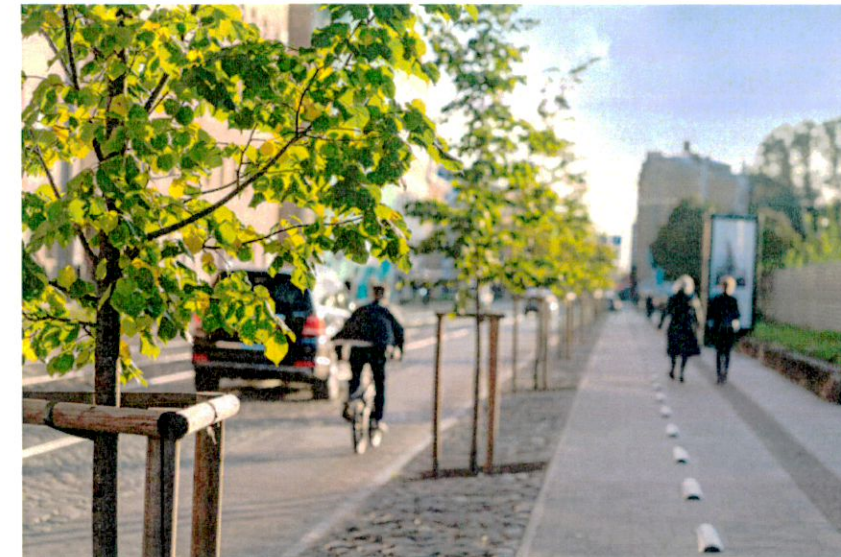
## Design development - Proposed Landscape mood Board



Upright Oak tree



Examples of Paving banding



Wildflower Planting to front of Building



Proposed seating



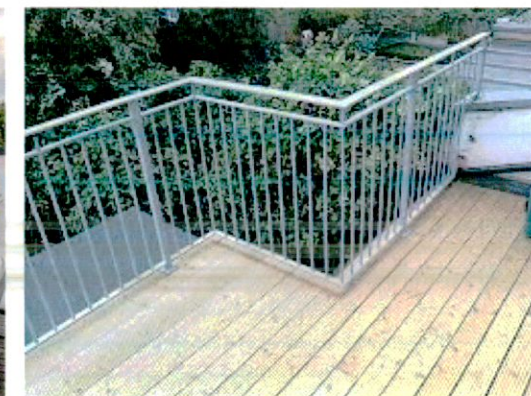
Urban Bat box



Pollinator Friendly Planting in planting beds on Ground floor and roof terraces.



Roof Terraces



Metal or Glass Railing around Roof terraces

# CUCKOO NEST PUB/ APARTMENT DEV

## Proposed Trees and Medium shrub planting



Acer palmatum 'Sango kaku'



Amelanchier grandiflora



Quercus robur 'Fastigiata'



Fagus sylvatica 'Dawyck'



Rhus typhina



Betula pendula



Persicaria affine



Vinca minor



Hypericum calycinum



Aucuba japonica

### Proposed Trees

No.	Name	Size
T1	Acer palmatum 'Sango kaku'	120 cm-150cm
T2	Amelanchier grandiflora	150cm height r/b
T3	Quercus robur 'Fastigiata'	20-25cm
T4	Fagus sylvatica 'Dawyck'	18 -20cm
T5	Rhus typhina	150cm height r/b
T6	Betula pendula	14-16cm



Miscanthus sinensis



Prunus 'Otto luyken'



Lavandula angustifolia



Libertia grandiflora



Sedum spectabile

# CUCKOO NEST PUB/ APARTMENT DEV

## Proposed Wildflower planting

Wildflower Meadow Mix

Name:

Common knapweed - *Centaurea nigra*  
 Ribwort plantain - *Plantago lanceolata*  
 Red clover - *Trifolium pratense*  
 Bird's-foot trefoil - *Lotus corniculatus*  
 Bulbous buttercup - *Ranunculus bulbosus*  
 Meadow buttercup - *Ranunculus acris*  
 Lady's-bedstraw - *Galium verum*  
 Cowslip - *Primula veris*  
 Oxeye daisy - *Leucanthemum vulgare*  
 Yellow Rattle - *Rhinanthus minor*  
 Common sorrel *Rumex acetosa*  
 Burnet saxifrage - *Pimpinella saxifraga*  
 Autumn hawkbit - *Leontodon autumnalis*  
 Rough hawkbit - *Leontodon hispidus*

Common knapweed  
*Centaurea nigra*



Ribwort plantain  
*Plantago lanceolata*



Red clover  
*Trifolium pratense*



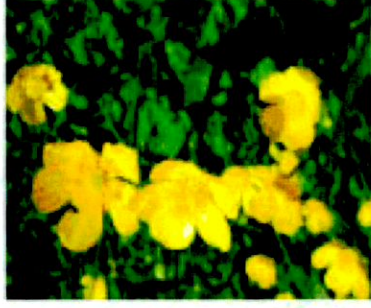
Bird's-foot trefoil  
*Lotus corniculatus*



Bulbous buttercup  
*Ranunculus bulbosus*



Meadow buttercup  
*Ranunculus acris*



Lady's-bedstraw  
*Galium verum*



Cowslip  
*Primula veris*



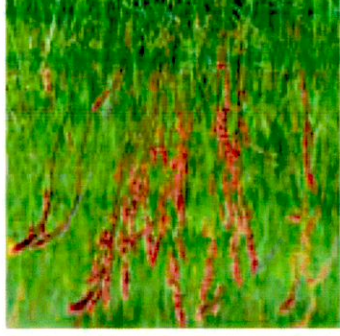
Oxeye daisy  
*Leucanthemum vulgare*



Yellow Rattle  
*Rhinanthus minor*



Common sorrel  
*Rumex acetosa*



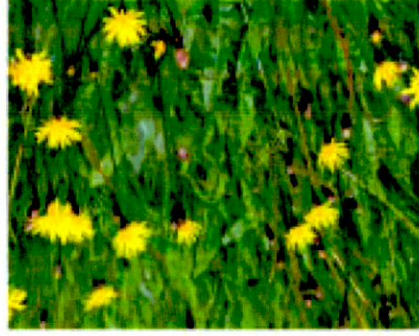
Burnet saxifrage  
*Pimpinella saxifraga*



Autumn hawkbit  
*Leontodon autumnalis*



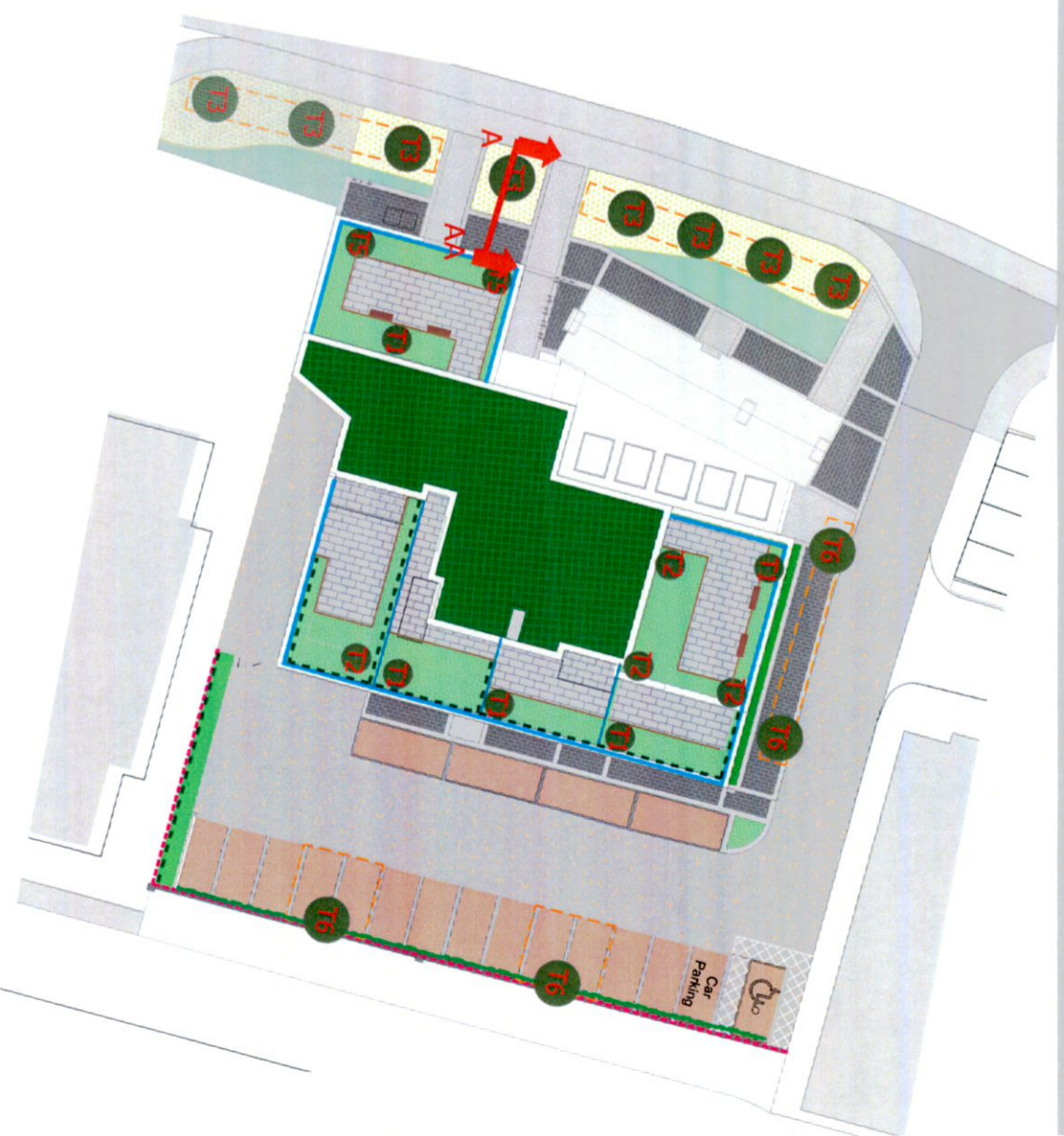
Rough hawkbit  
*Leontodon hispidus*



# CUCKOO NEST PUB/ APARTMENT DEV

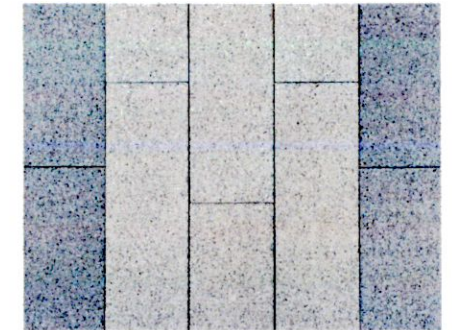
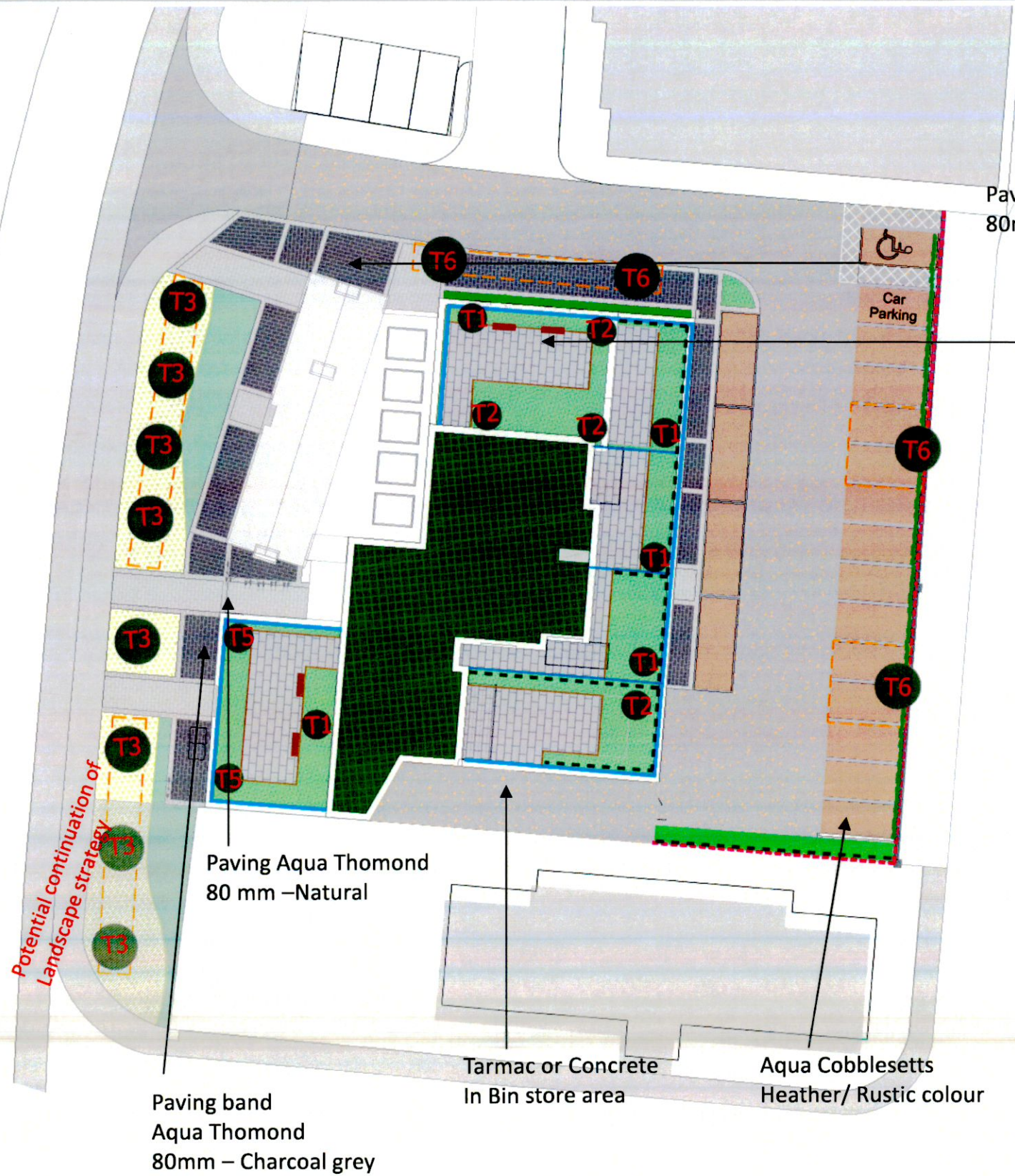
## Proposed Wildflower planting to Street Frontage

Section A-AA



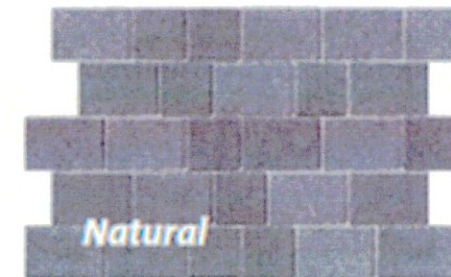
# CUCKOO NEST PUB/ APARTMENT DEV

## Proposed Paving



Paving Flag Plank (natural)  
600 x200 mm

Paving Flag Plank (natural)  
600 x200 mm



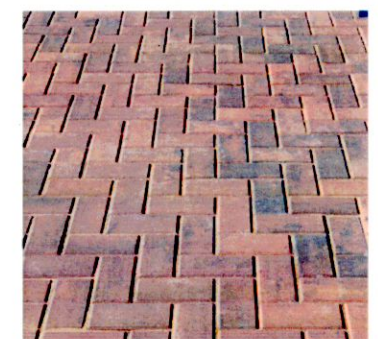
Paving Aqua Thomond



Charcoal Grey



Paving Aqua Thomond  
80 mm –Natural



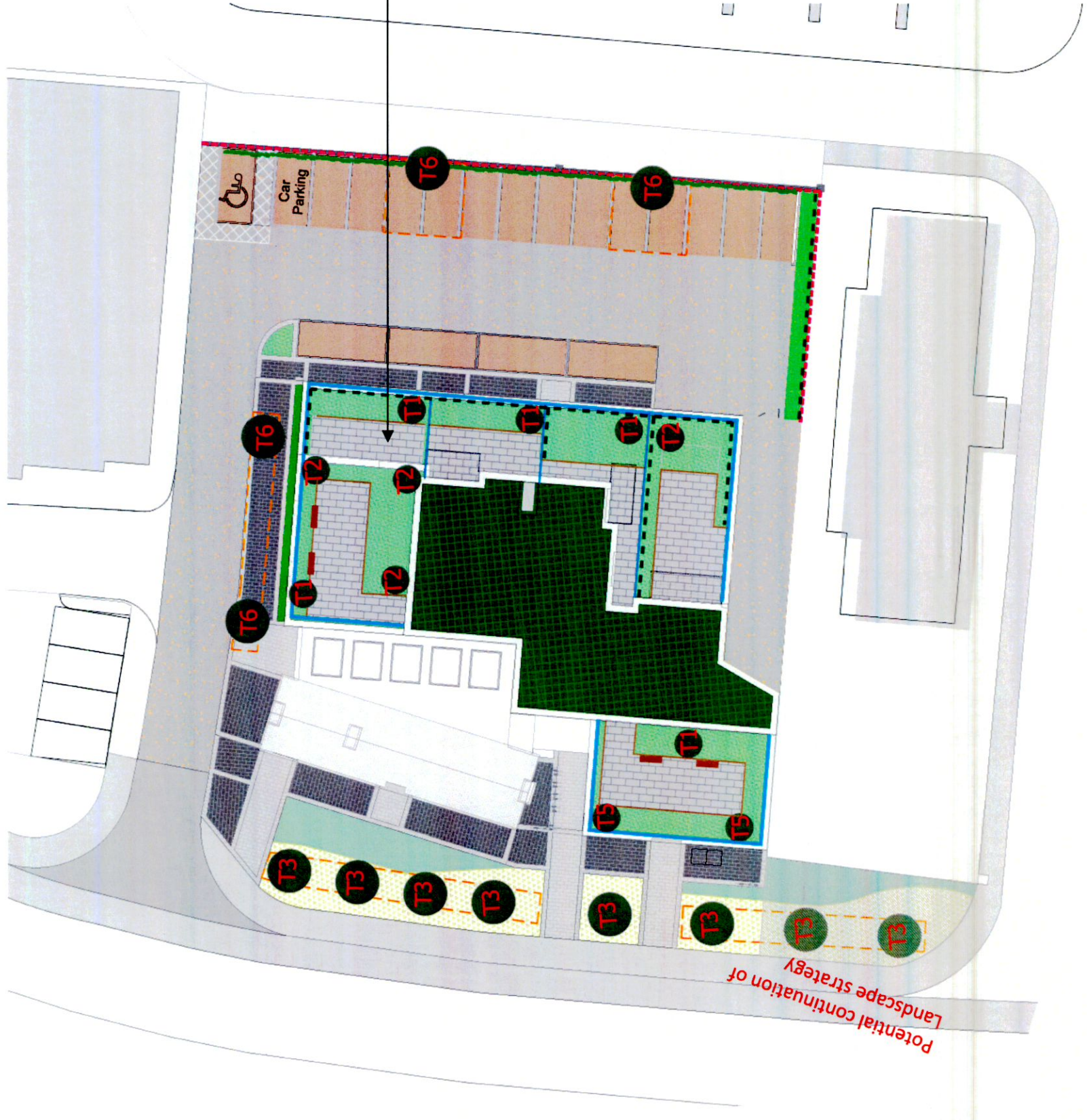
Aqua Cobblesetts  
Heather/ Rustic colour



**RMDA**  
LANDSCAPE ARCHITECTS • CONSULTANTS

# CUCKOO NEST PUB/ APARTMENT DEV

Proposed Paving For Roof Terraces



Paving Flag Plank (natural)  
600 x200 mm

Paving Flag Plank (natural)  
600 x200 mm

