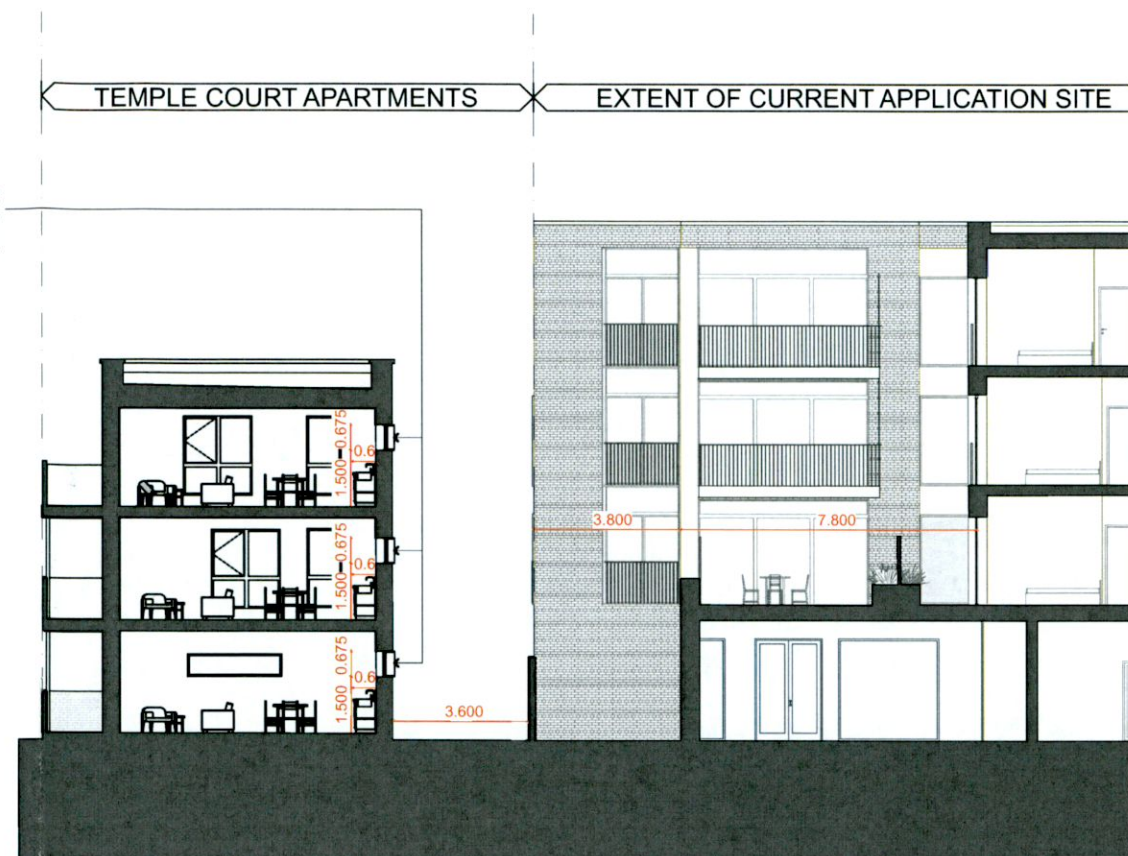


Key Plan
NTS

High level kitchen window with no direct overlooking to proposed new development.



Section B - B through Temple Court apartment block showing high level north-facing kitchen windows.
1:200 @ A3

Note: Internal dimensions in Temple Court apartments are approximate.



Photograph of Temple Court apartment kitchen showing high level north-facing window.
NTS

Issue ID	Issue Date	Change ID	Comments

Layout ID:	2110-RFI-05-	Scale:	1:500, 1:10, 1:200
Project:	Cuckoo's Nest Pub & Apartments, Greenhills Rd, Kilnamanagh, D24	Job No.:	2110
Drawing Name:	Temple Court apartments - kitchen windows	Series:	Planning
		Date:	06/12/2022
		Status:	