

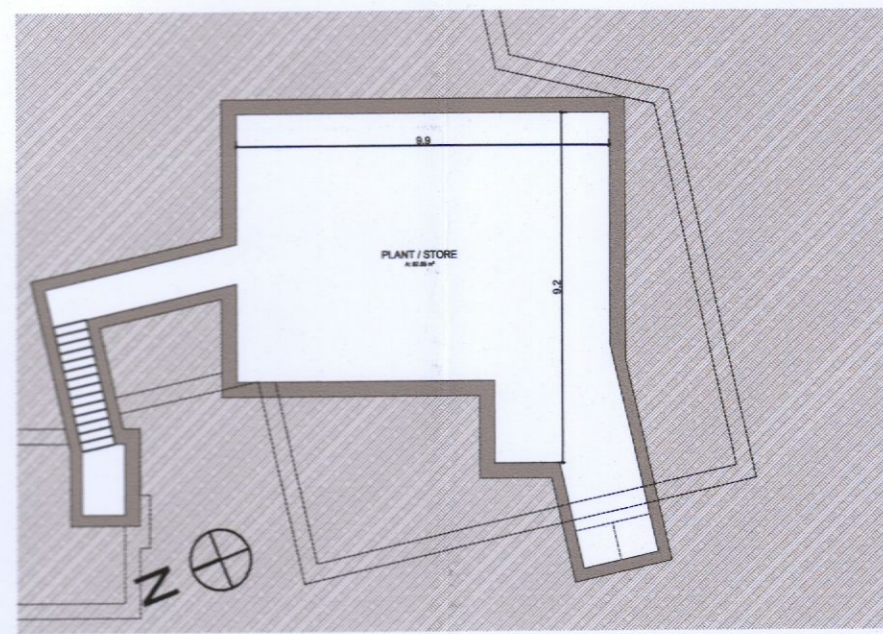
External finishes:
 Walls generally to have selected brick / render finish.
 Metal finish as indicated.
 Balconies to be finished in metal, powder-coated to selected colour.
 Windows & doors to be selected triple glazed units to selected colour.
 Balustrade to balconies / roof terraces to be metal, painted to selected colour.

Schedule of accommodation:

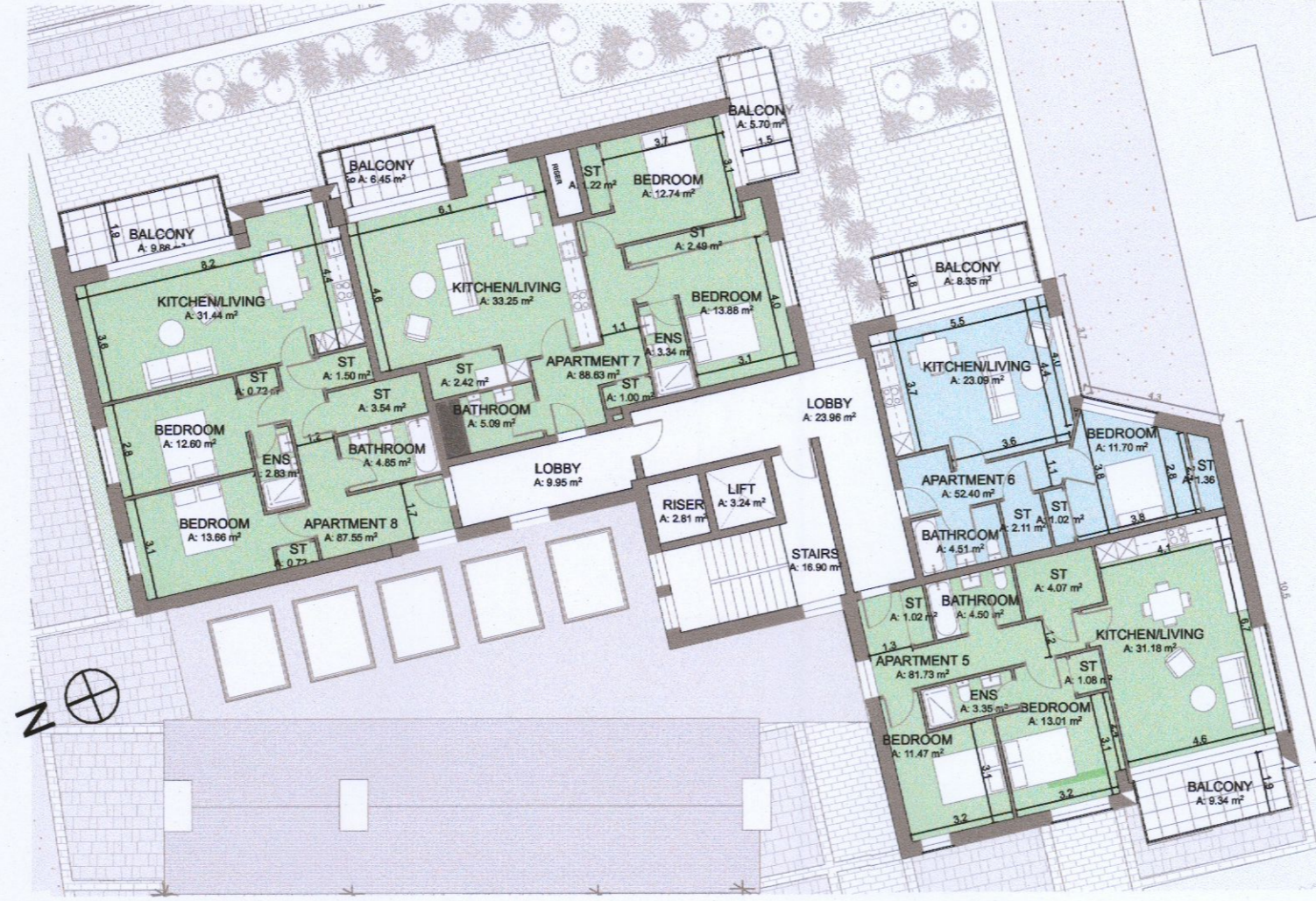
| |
|----------------------------|
| 1 no. shop local |
| 1 no. gastropub |
| 3 no. 1 bedroom apartments |
| 6 no. 2 bedroom apartments |
| 1 no. 3 bedroom apartment |

Apartment schedule:

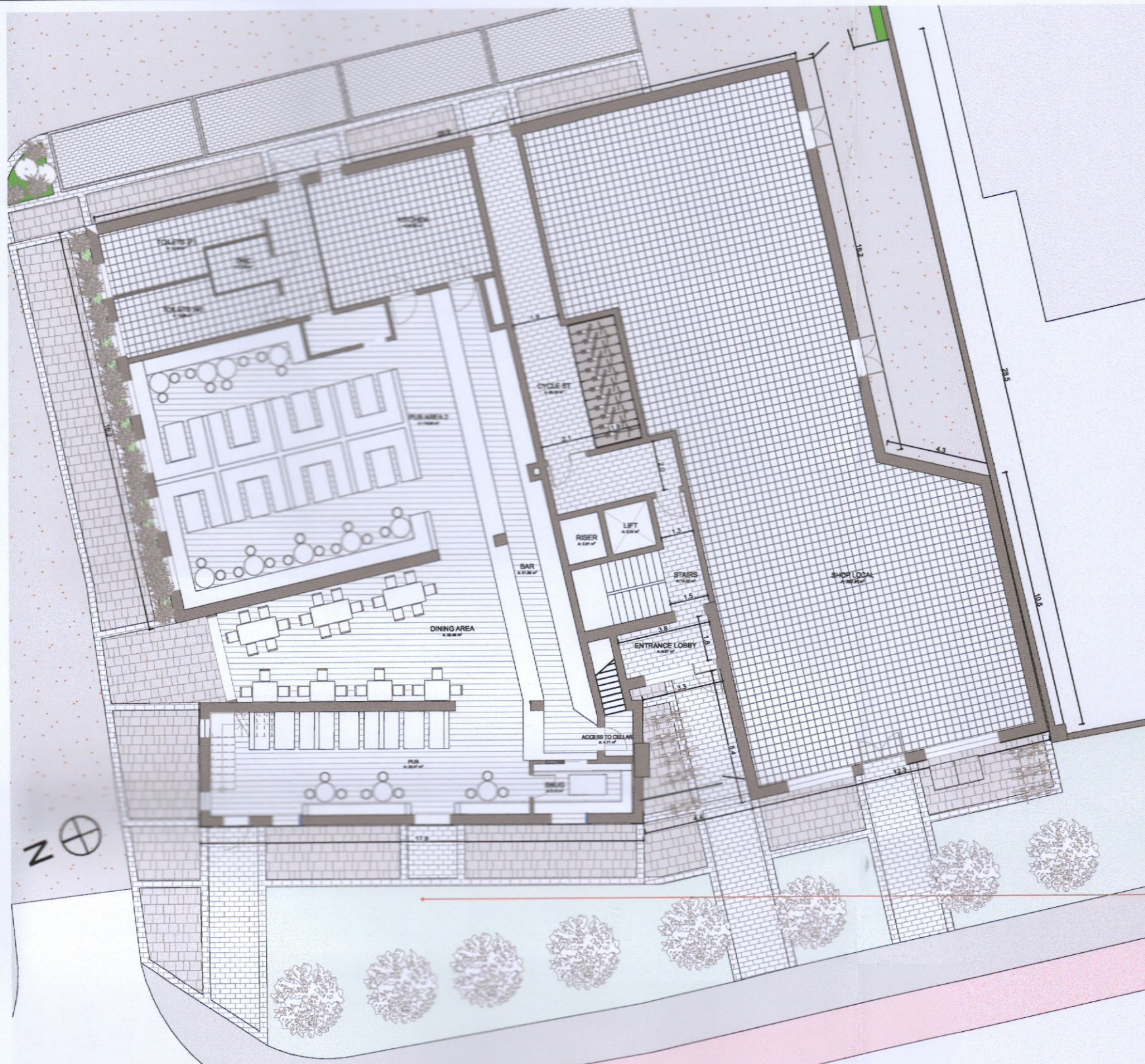
| | | |
|----------------------|--------------|-------------|
| Apartment 1 (2B/4P) | First floor | 81.7 sq. m. |
| Apartment 2 (1B/2P) | First floor | 88.4 sq. m. |
| Apartment 3 (2B/4P) | First floor | 81.4 sq. m. |
| Apartment 4 (2B/4P) | First floor | 87.5 sq. m. |
| Apartment 5 (2B/4P) | Second floor | 81.7 sq. m. |
| Apartment 6 (1B/2P) | Second floor | 88.4 sq. m. |
| Apartment 7 (2B/4P) | Second floor | 81.4 sq. m. |
| Apartment 8 (2B/4P) | Second floor | 87.5 sq. m. |
| Apartment 9 (1B/2P) | Third floor | 52.4 sq. m. |
| Apartment 10 (3B/5P) | Third floor | 96.2 sq. m. |



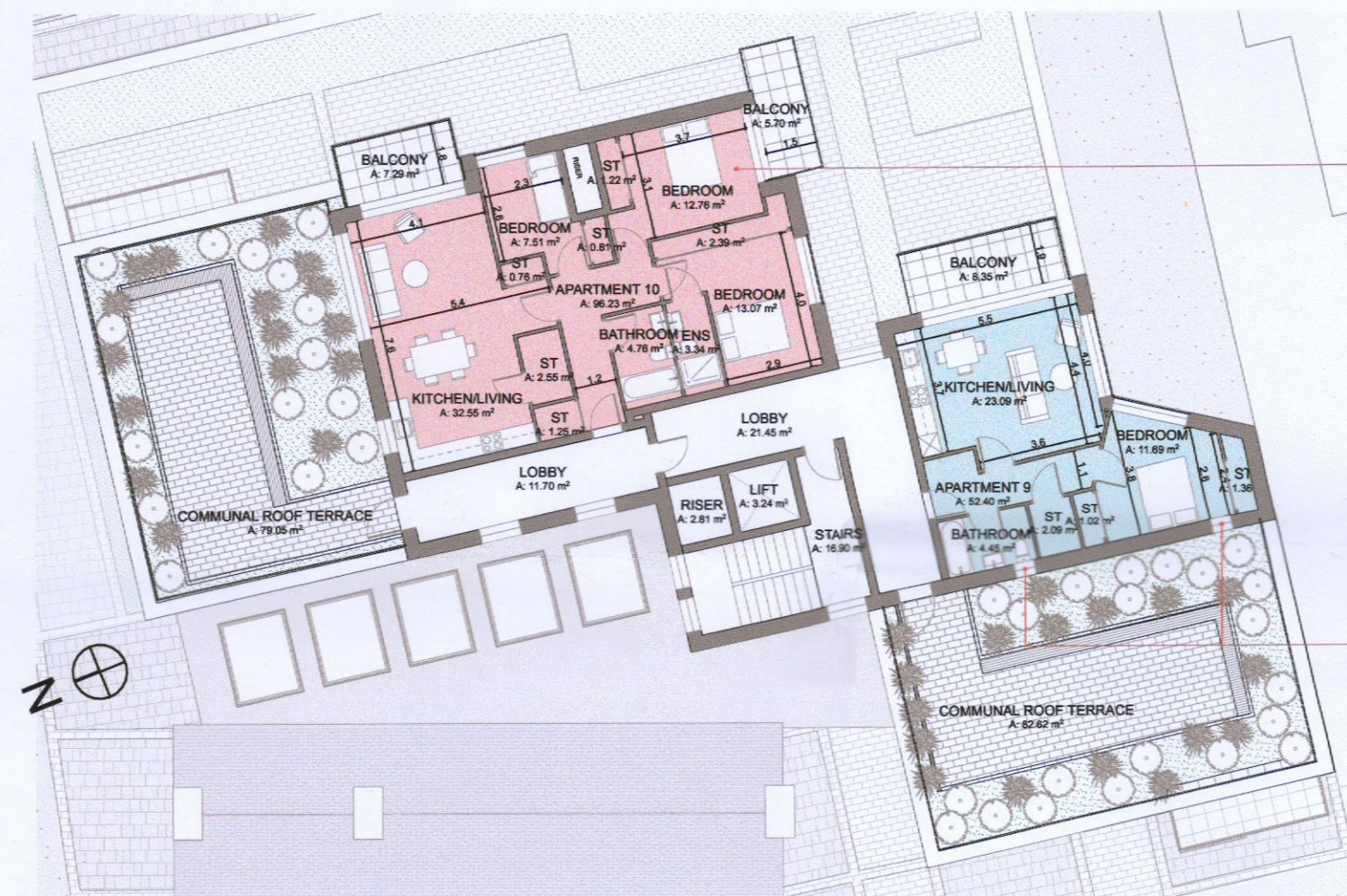
1:200 Proposed Cellar Plan



1:200 Proposed Second Floor Plan



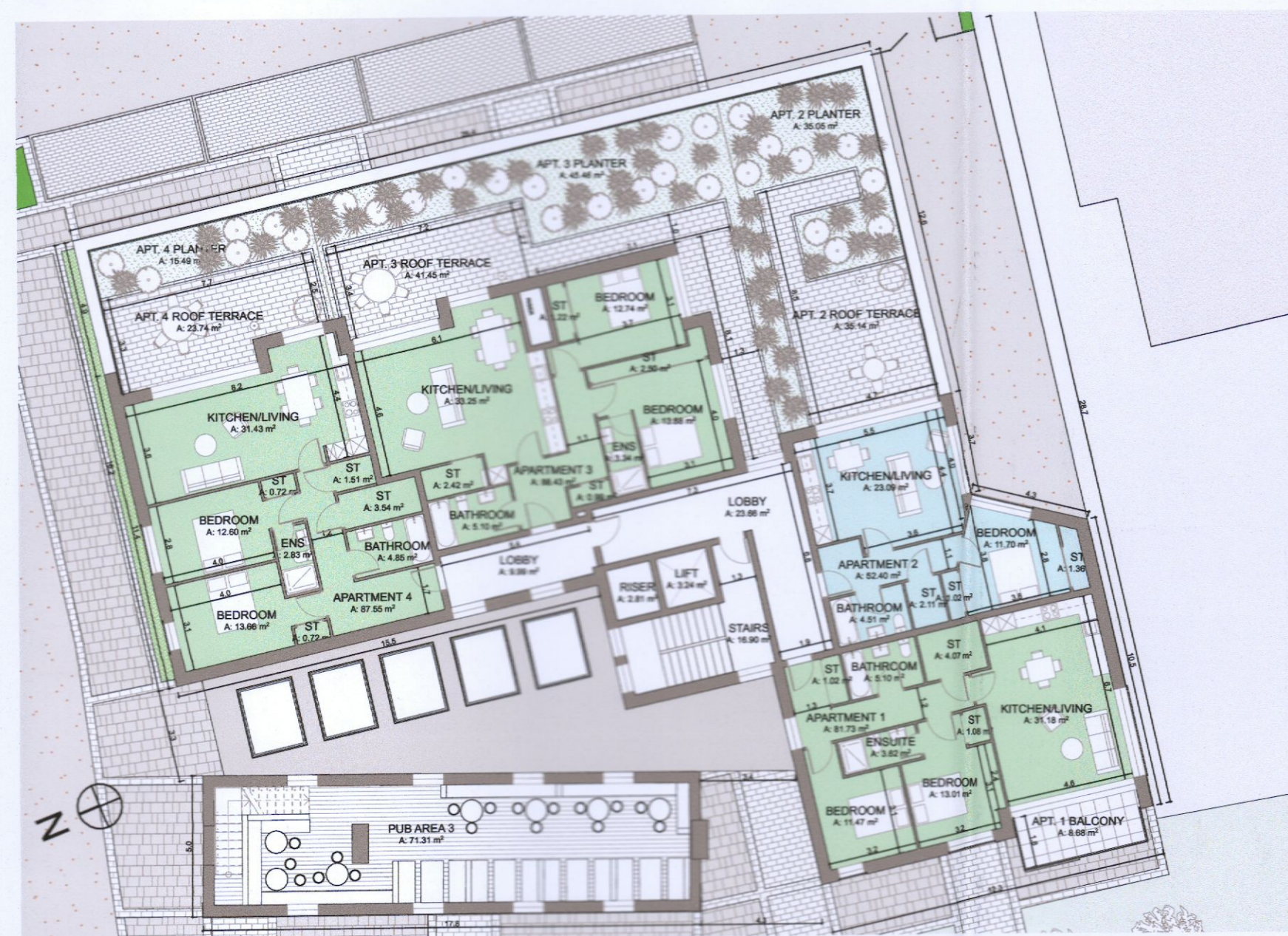
1:200 Proposed Ground Floor Plan



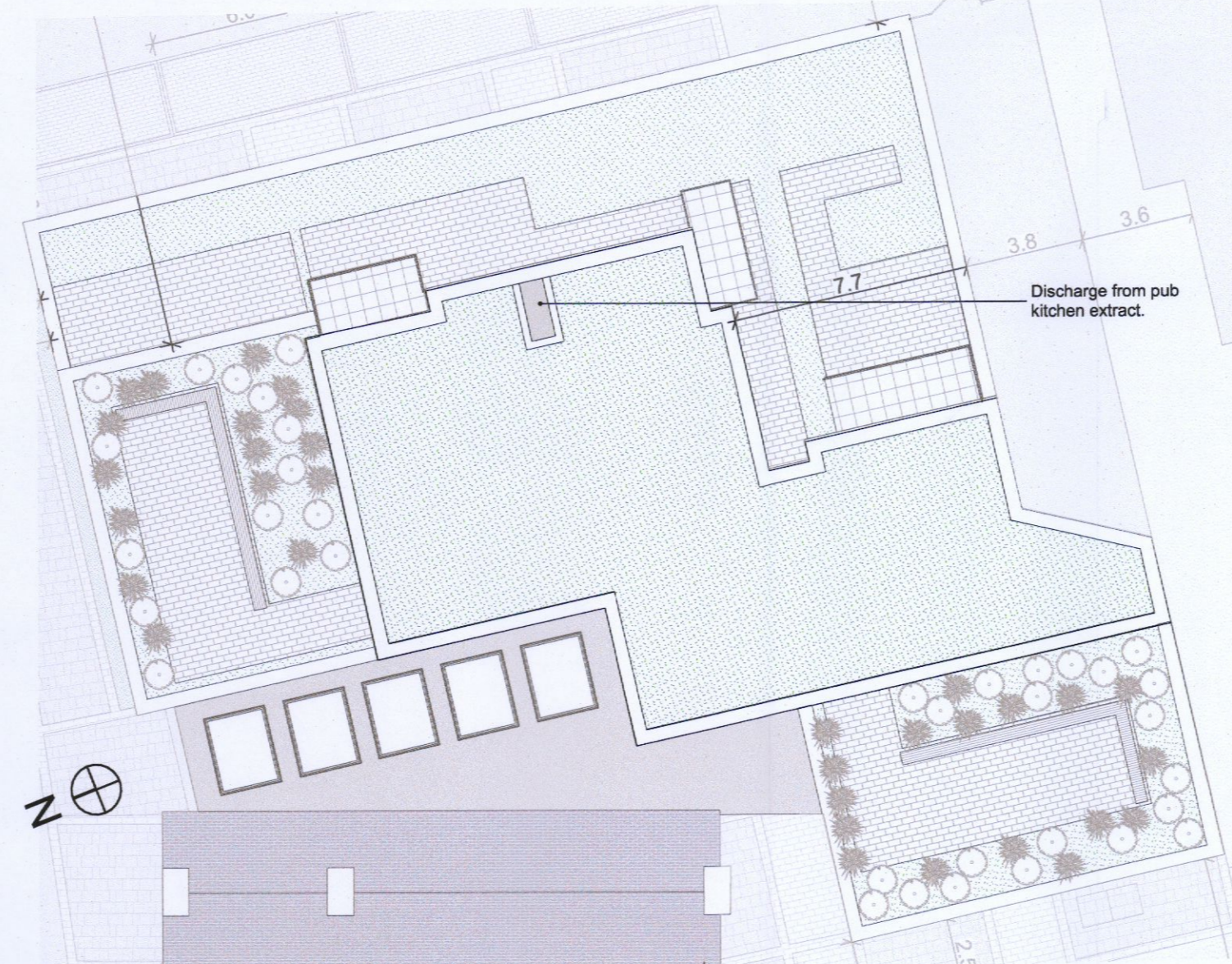
1:200 Proposed Third Floor Plan

FURTHER INFORMATION
 2 no. 1-bedroom (2P) apartments changed to 1 no. 3-bedroom (5P) apartment.

FURTHER INFORMATION
 2 no. windows added to apartment 9 so it will have windows facing three aspects.



1:200 Proposed First Floor Plan



1:200 Proposed Roof Plan



1:200 Proposed West Elevation



1:200 Proposed South Elevation



1:200 Proposed East Elevation



1:200 Proposed North Elevation

FURTHER INFORMATION
 Windows at ground floor on North elevation enlarged & additional 2 no. windows added to existing building.



1:200 Proposed Building Section A-A

Acoustic sound transmission mitigation measures:
 - design of first floor slab to reduce sound transmission from ground floor activities.
 - use of triple glazing to apartments.

NTS Key Plan

| Rev. No. | Date | Change | Comments |
|----------|------|--------|----------|
| | | | |
| | | | |
| | | | |