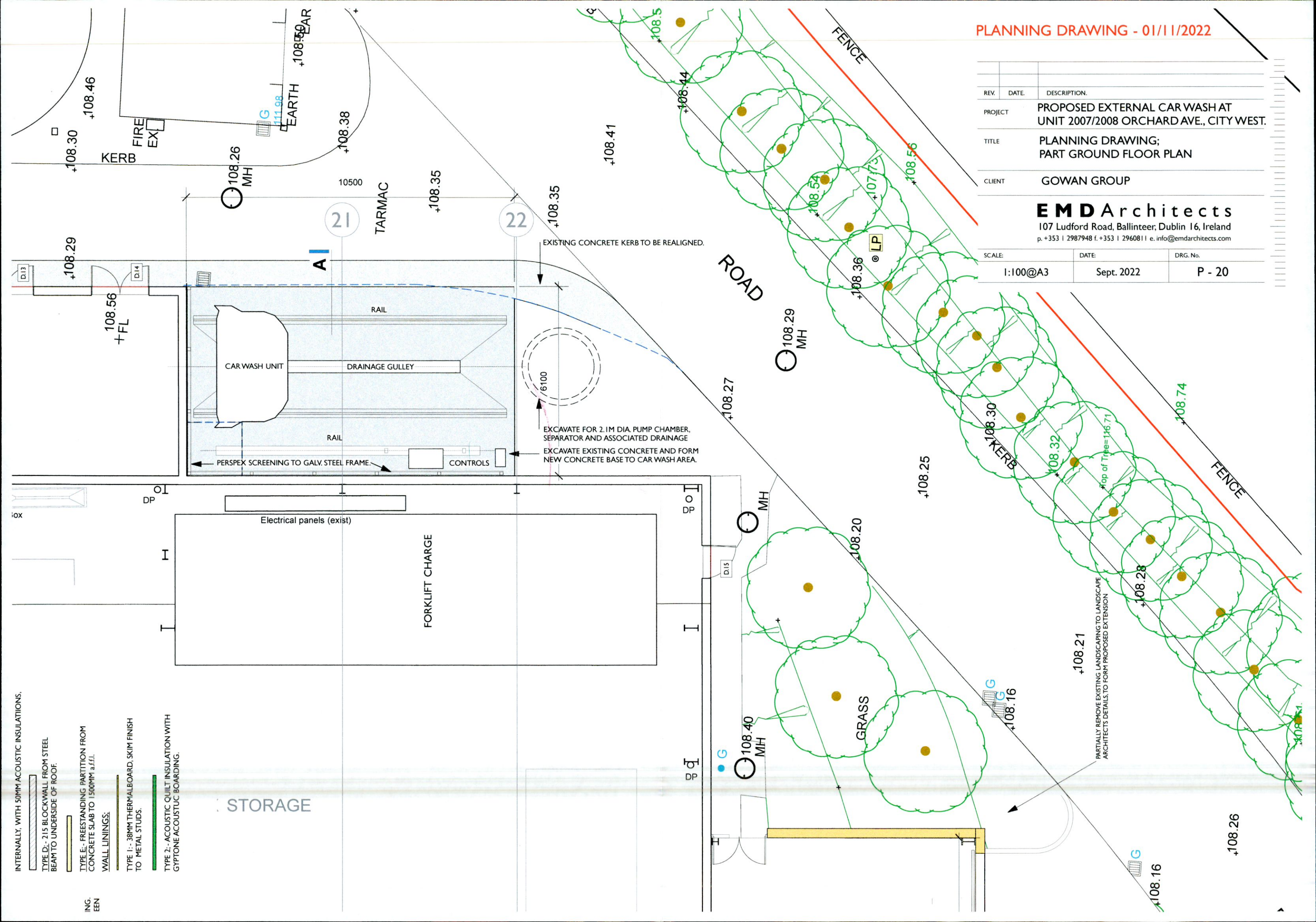


REV.	DATE	DESCRIPTION
PROJECT		PROPOSED EXTERNAL CAR WASH AT UNIT 2007/2008 ORCHARD AVE., CITY WEST.
TITLE		PLANNING DRAWING; PART GROUND FLOOR PLAN
CLIENT		GOWAN GROUP

EMD Architects

107 Ludford Road, Ballinteer, Dublin 16, Ireland
p. +353 | 2987948 f. +353 | 2960811 e. info@emdarchitects.com

SCALE:	DATE:	DRG. No.
1:100@A3	Sept. 2022	P - 20



EXISTING CONCRETE KERB TO BE REALIGNED.

EXCAVATE FOR 2.1M DIA. PUMP CHAMBER, SEPARATOR AND ASSOCIATED DRAINAGE
EXCAVATE EXISTING CONCRETE AND FORM NEW CONCRETE BASE TO CAR WASH AREA.

PARTIALLY REMOVE EXISTING LANDSCAPING TO LANDSCAPE ARCHITECTS DETAILS, TO FORM PROPOSED EXTENSION

- INTERNALLY, WITH 50MM ACOUSTIC INSULATIONS.
- TYPE D:- 215 BLOCKWALL FROM STEEL BEAM TO UNDERSIDE OF ROOF.
- TYPE E:- FREESTANDING PARTITION FROM CONCRETE SLAB TO 1500MM a.f.f.l.
- WALL LININGS:
- TYPE 1:- 38MM THERMALBOARD, SKIM FINISH TO METAL STUDS.
- TYPE 2:- ACOUSTIC QUILT INSULATION WITH GYPTONE ACOUSTIC BOARDING.

ING. EEN