

TABLE OF AREAS & CAR & BICYCLE PARKING

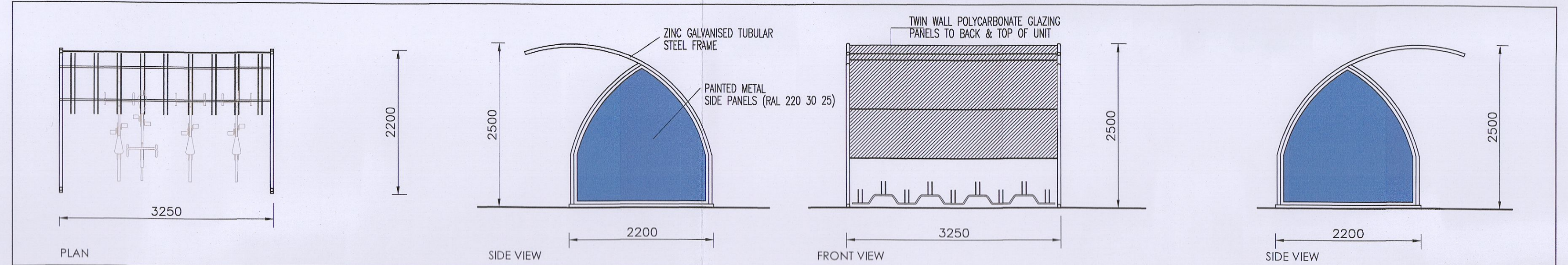
SITE B	LIGHT INDUSTRY	OFFICE	STAFF FACILITIES	TOTAL
UNIT B16-B23 GROUND FLOOR	2,764m <sup>2</sup> 29,752 Sq.ft	290m <sup>2</sup> 3,121 Sq.ft.	70m <sup>2</sup> 753 Sq.ft.	3,124m <sup>2</sup> 33,627 Sq.ft.
UNIT B16-B23 FIRST FLOOR	-	291m <sup>2</sup> 3,132 Sq.ft.	69m <sup>2</sup> 743 Sq.ft.	360m <sup>2</sup> 3,875 Sq.ft.
TOTAL	2,764m <sup>2</sup> 29,752 Sq.ft	581m <sup>2</sup> 6,254 Sq.ft.	139m <sup>2</sup> 1,496 Sq.ft.	3,484m <sup>2</sup> 37,502 Sq.ft.

CARPARKING	1 per 100m <sup>2</sup>	1 per 50m <sup>2</sup>	-	-
REQUIRED	28 SPACES	12 SPACES	-	40 SPACES REQUIRED

3no. DISABLED CAR PARK SPACES TO BE PROVIDED 77 SPACES PROVIDED

WAREHOUSE	OFFICE		
BICYCLE PARKING	1 per 200m <sup>2</sup> LONG TERM	1 per 200m <sup>2</sup> LONG TERM	1 per 200m <sup>2</sup> SHORT TERM
REQUIRED	14 SPACES	3 SPACES	3 SPACES

20 SPACES REQUIRED  
21 SPACES PROVIDED



BICYCLE SHELTER DETAIL

Rev	Date	By	CHK	App	Reason
PL119-11-002	TK	PK	ISSUED FOR PLANNING APPLICATION		

Job Title <b>SITE B - BLOCK B4          AERODROME BUSINESS PARK          RATHCOOLE CO. DUBLIN</b>	Drawing Title <b>SITE LAYOUT PLAN</b>	Project No. <b>D1119-3</b>	Drawing No. <b>D200</b>
Client <b>DE LA SALLE LIMITED</b>	Drawing Date <b>PLANNING</b>	Date <b>NOV 2022</b>	Scale <b>1/500</b>

**KAVANAGH BURKE**  
 CONSULTING ENGINEERS  
 Tel: 01 - 450 0694 Unit G3, Calmount Pk.  
 Fax: 01 - 458 4540 Ballymount, Dublin 12.  
 Email: [pkavanagh@kavanaghburke.ie](mailto:pkavanagh@kavanaghburke.ie)