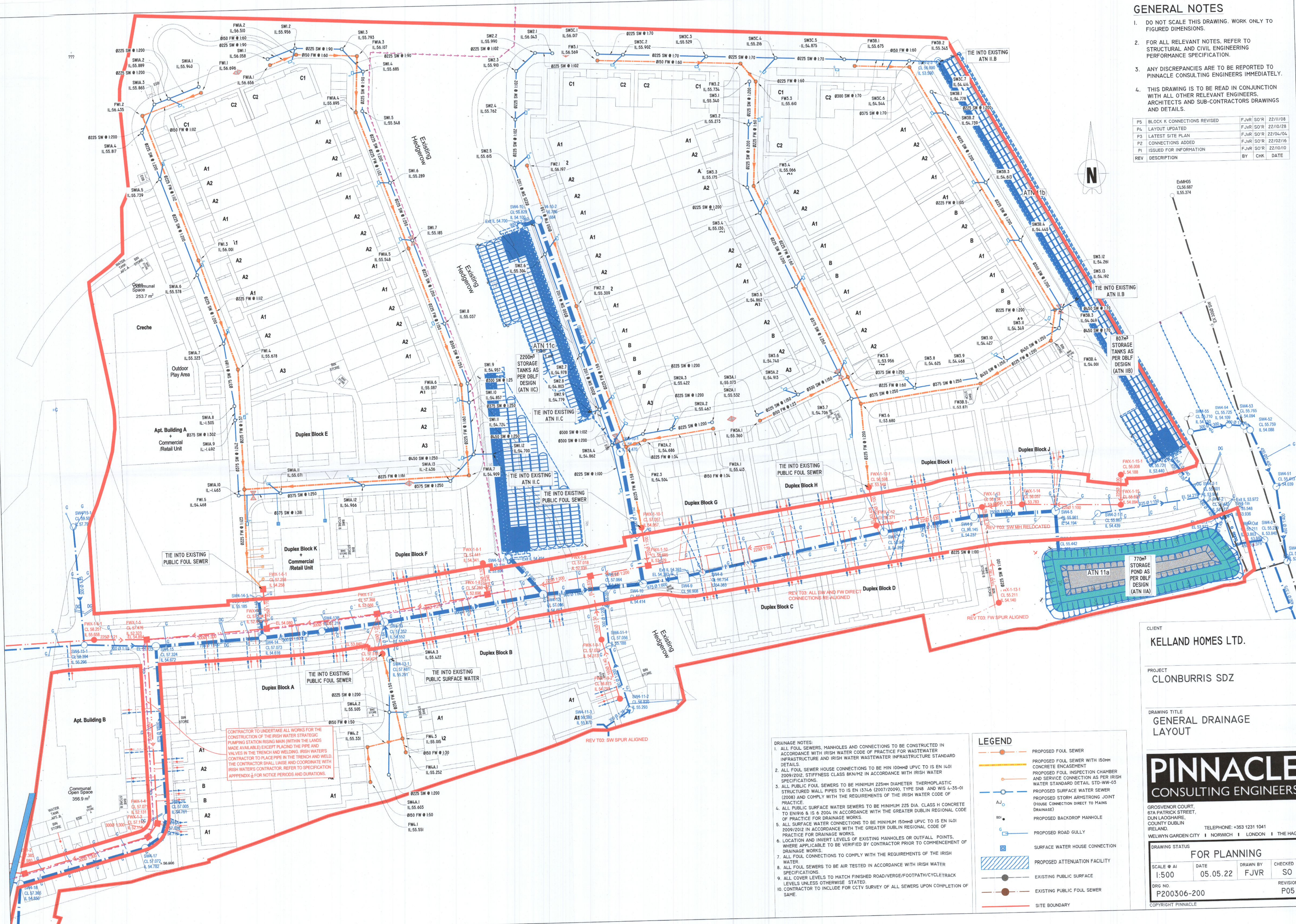
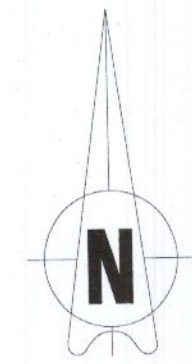


GENERAL NOTES

- DO NOT SCALE THIS DRAWING. WORK ONLY TO FIGURED DIMENSIONS.
- FOR ALL RELEVANT NOTES, REFER TO STRUCTURAL AND CIVIL ENGINEERING PERFORMANCE SPECIFICATION.
- ANY DISCREPANCIES ARE TO BE REPORTED TO PINNACLE CONSULTING ENGINEERS IMMEDIATELY.
- THIS DRAWING IS TO BE READ IN CONJUNCTION WITH ALL OTHER RELEVANT ENGINEERS, ARCHITECTS AND SUB-CONTRACTORS DRAWINGS AND DETAILS.

REV	DESCRIPTION	BY	CHK	DATE
P5	BLOCK K CONNECTIONS REVISED	FJVR	SO'R	22/11/08
P4	LAYOUT UPDATED	FJVR	SO'R	22/10/28
P3	LATEST SITE PLAN	FJVR	SO'R	22/04/04
P2	CONNECTIONS ADDED	FJVR	SO'R	22/02/16
P1	ISSUED FOR INFORMATION	FJVR	SO'R	22/10/10



CLIENT
KELLAND HOMES LTD.

PROJECT
CLONBURRIS SDZ

DRAWING TITLE
GENERAL DRAINAGE LAYOUT

PINNACLE CONSULTING ENGINEERS

GROSVENOR COURT,
67A PATRICK STREET,
DUN LAOGHAIRE,
COUNTY DUBLIN
IRELAND. TELEPHONE: +353 1231 1041
WELWYN GARDEN CITY | NORWICH | LONDON | THE HAGUE

DRAWING STATUS			
FOR PLANNING			
SCALE @ A1	DATE	DRAWN BY	CHECKED
1:500	05.05.22	FJVR	SO
DRG NO.	P200306-200	REVISION	P05
COPYRIGHT PINNACLE			

- DRAINAGE NOTES:**
- ALL FOUL SEWERS, MANHOLES AND CONNECTIONS TO BE CONSTRUCTED IN ACCORDANCE WITH IRISH WATER CODE OF PRACTICE FOR WASTEWATER INFRASTRUCTURE AND IRISH WATER WASTEWATER INFRASTRUCTURE STANDARD DETAILS.
 - ALL FOUL SEWER HOUSE CONNECTIONS TO BE MIN 100mm UPVC TO IS EN 1401 2009/2012, STIFFNESS CLASS 8kN/M2 IN ACCORDANCE WITH IRISH WATER SPECIFICATIONS.
 - ALL PUBLIC FOUL SEWERS TO BE MINIMUM 225mm DIAMETER THERMOPLASTIC STRUCTURED WALL PIPES TO IS EN 13746 (2007/2009), TYPE S8 AND WS L4-35-01 (2008) AND COMPLY WITH THE REQUIREMENTS OF THE IRISH WATER CODE OF PRACTICE.
 - ALL PUBLIC SURFACE WATER SEWERS TO BE MINIMUM 225 DIA. CLASS H CONCRETE TO EN 9106 & IS 6 2004 IN ACCORDANCE WITH THE GREATER DUBLIN REGIONAL CODE OF PRACTICE FOR DRAINAGE WORKS.
 - ALL SURFACE WATER CONNECTIONS TO BE MINIMUM 150mm UPVC TO IS EN 1401 2009/2012 IN ACCORDANCE WITH THE GREATER DUBLIN REGIONAL CODE OF PRACTICE FOR DRAINAGE WORKS.
 - LOCATION AND INVERT LEVELS OF EXISTING MANHOLES OR OUTFALL POINTS, WHERE APPLICABLE TO BE VERIFIED BY CONTRACTOR PRIOR TO COMMENCEMENT OF DRAINAGE WORKS.
 - ALL FOUL CONNECTIONS TO COMPLY WITH THE REQUIREMENTS OF THE IRISH WATER.
 - ALL FOUL SEWERS TO BE AIR TESTED IN ACCORDANCE WITH IRISH WATER SPECIFICATIONS.
 - ALL COVER LEVELS TO MATCH FINISHED ROAD/VERGE/FOOTPATH/CYCLETRACK LEVELS UNLESS OTHERWISE STATED.
 - CONTRACTOR TO INCLUDE FOR CCTV SURVEY OF ALL SEWERS UPON COMPLETION OF SAME.

LEGEND

	PROPOSED FOUL SEWER
	PROPOSED FOUL SEWER WITH 150MM CONCRETE ENCASUREMENT
	PROPOSED SURFACE WATER SEWER
	PROPOSED STORM ARMSTRONG JOINT (HOUSE CONNECTION DIRECT TO MAINS DRAINAGE)
	PROPOSED BACKDROP MANHOLE
	PROPOSED ROAD GULLY
	SURFACE WATER HOUSE CONNECTION
	PROPOSED ATTENUATION FACILITY
	EXISTING PUBLIC SURFACE
	EXISTING PUBLIC FOUL SEWER
	SITE BOUNDARY