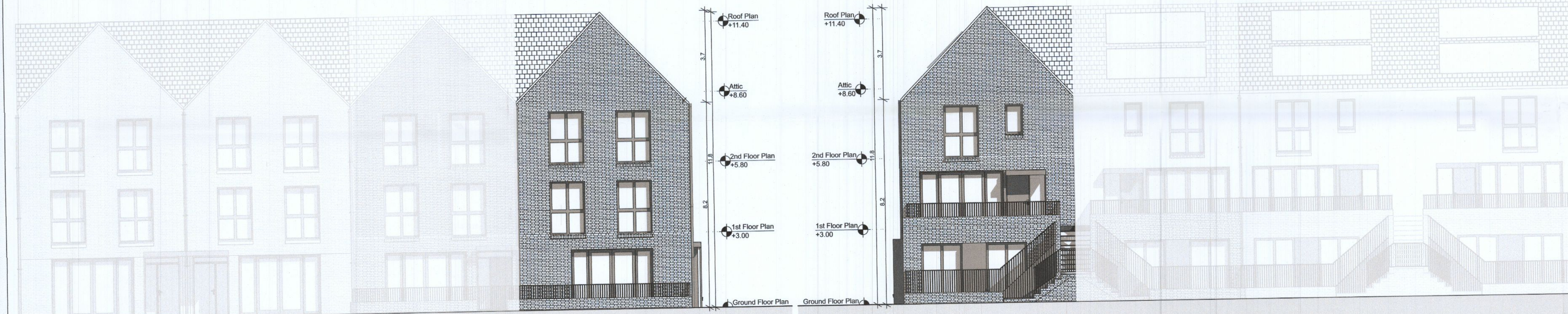


GROUND FLOOR PLAN

FIRST FLOOR PLAN

SECOND FLOOR PLAN

ROOF PLAN



FRONT ELEVATION

REAR ELEVATION



SIDE ELEVATION

TYPICAL SECTION

Duplex Block C&D - 2B/4P Unit - Ground Floor - End Unit A - Side Entrance		
Name	Proposed Area	DoHPCLG Area Min.
2 Bed Unit	76.0 m <sup>2</sup>	73.0 m <sup>2</sup>
2 Bed / 4 Person Unit - Space Provision & Room Sizes		
Area Type	Proposed Area	DoHPCLG Area Min.
Aggregate Bedroom Area	24.5 m <sup>2</sup>	24.4 m <sup>2</sup>
Aggregate Living Area	32.8 m <sup>2</sup>	30.0 m <sup>2</sup>
2 Bed / 4 Person Unit - Storage Provision		
Area Type	Proposed Area	DoHPCLG Area Min.
Storage	6.0 m <sup>2</sup>	6.0 m <sup>2</sup>
Duplex Block C&D - 3B/5P Unit - First&Second Floor - End Unit A - Side Entrance		
Name	Proposed Area	DoHPCLG Area Min.
3 Bed Unit	109.2 m <sup>2</sup>	90.0 m <sup>2</sup>
3 Bed / 5 Person Unit - Space Provision & Room Sizes		
Area Type	Proposed Area	DoHPCLG Area Min.
Aggregate Bedroom Area	31.7 m <sup>2</sup>	31.5 m <sup>2</sup>
Aggregate Living Area	39.8 m <sup>2</sup>	34.0 m <sup>2</sup>
3 Bed / 5 Person Unit - Storage Provision		
Area Type	Proposed Area	DoHPCLG Area Min.
Storage	9.0 m <sup>2</sup>	9.0 m <sup>2</sup>

Refer to Site Plan for:

- Finished floor levels to survey datum
- Orientation
- Handing of type for each unit

Notes

Do not scale from this drawing.  
Use figured dimensions only.  
All errors and omissions to be reported to the Architect.  
This drawing is to be read in conjunction with relevant consultant's drawings.  
All dimensions are in millimetres and all levels are in meters to match Datums unless otherwise noted.

This drawing is for planning purposes only and not for construction.  
This drawing or design may not be reproduced without permission.

NOTES ON FINISHES:	
ROOF:	TO BE FINISHED IN SLATE OR CONCRETE ROOF TILES IN SELECTED COLOUR OR SIMILAR APPROVED
WALLS:	SELECTED CLAY BRICKWORK WHERE INDICATED OTHERWISE SELECTED SELF-COLOURED RENDER
JOINERY:	ALL WINDOWS AND DOORS, FRAMES AND LEAFS TO BE ALUMINIUM POWDER COATED TO APPROVED COLOUR OR UPVC OR PAINTED TIMBER TO APPROVED COLOUR. OBSCURE GLAZING WHERE INDICATED TO SENSITIVE
WINDOWS:	
RAINWATER GOODS:	GUTTERS, DOWNPIPES AND FIXINGS TO BE UPVC OR ALUMINIUM POWDER COATED TO SELECTED COLOUR TO MATCH ROOF SLATES.
SOLAR PANELS:	INDICATIVE SOLAR PANEL POSITION, FINAL SOLAR PANEL POSITION DEPENDS ON HOUSE ORIENTATION. THE SOLAR PANELS INDICATED ARE A PROVISIONAL OPTION TO SATISFY RENEWABLE ENERGY REQUIREMENTS OF BUILDING REGULATIONS PART L. SOLAR PANELS MAY BE OMITTED IN FAVOUR OF ALTERNATIVE RENEWABLE ENERGY OPTIONS.



KEY PLAN

**RIA**

**Planning Application**  
**- Additional Information**

**DAVEY + SMITH**  
ARCHITECTS

DAVEY+SMITH ARCHITECTS | 13 SEAPORT BUILDING, 44/45 CLONTARF ROAD, CLONTARF, DUBLIN 3 | PH: 01 2447638 | EMAIL: info@davey-smith.com | WEB: www.davey-smith.com

Layout ID: PH 019-2804  
 Project: Clonburris, K1  
 Drawing Name: Duplex Block C&D End Unit A - Proposed Plans, Section & Elevations

Scale: 1:100	Series: 2804
Job No: 2804	Date: 23/11/2022
Series: PLANNING	Status: Planning

THIS DRAWING TO BE READ IN CONJUNCTION WITH RELEVANT CONSULTANT'S DRAWINGS - NOTIFY ARCHITECTS OF ANY DISCREPANCIES - CHECK DIMENSIONS ON SITE - USE FIGURED DIMENSIONS ONLY - COPYRIGHT RESERVED FOR DAVEY + SMITH ARCHITECTS LTD.