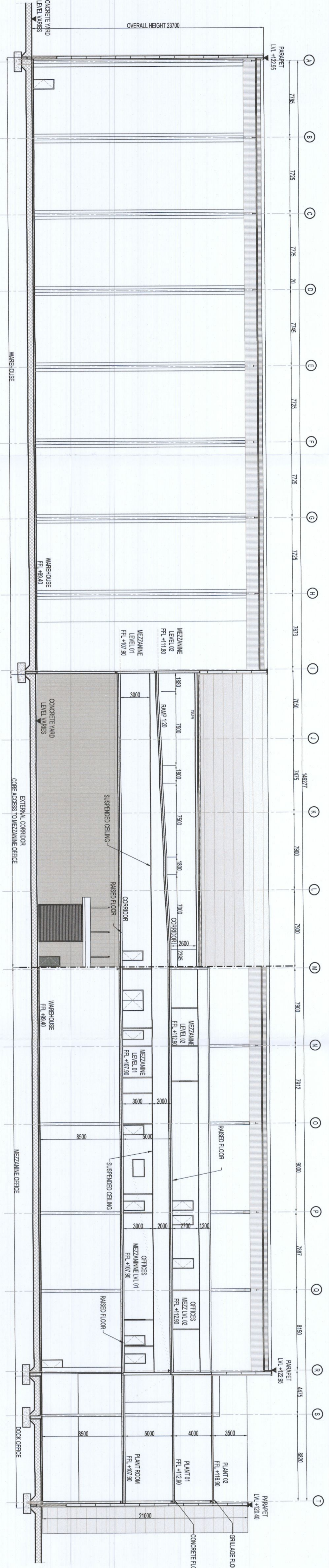
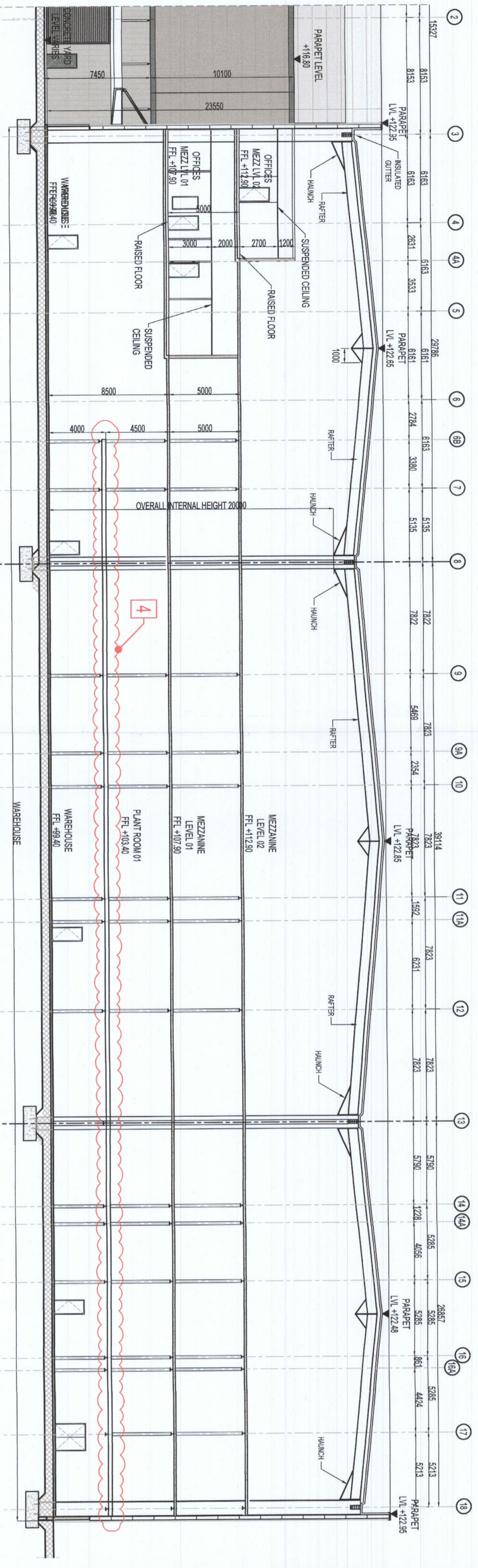


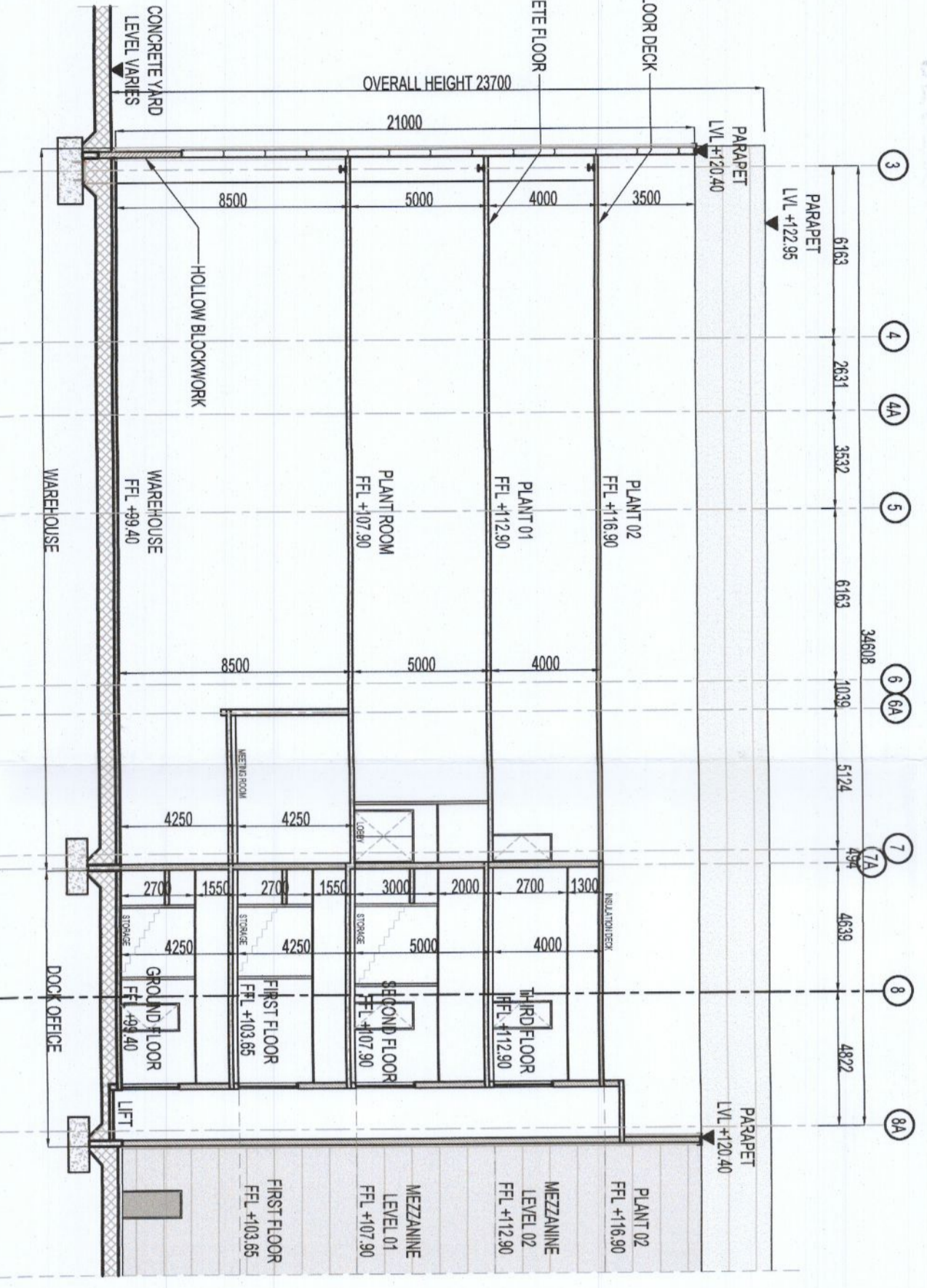
SECTION A-A
SCALE 1/200



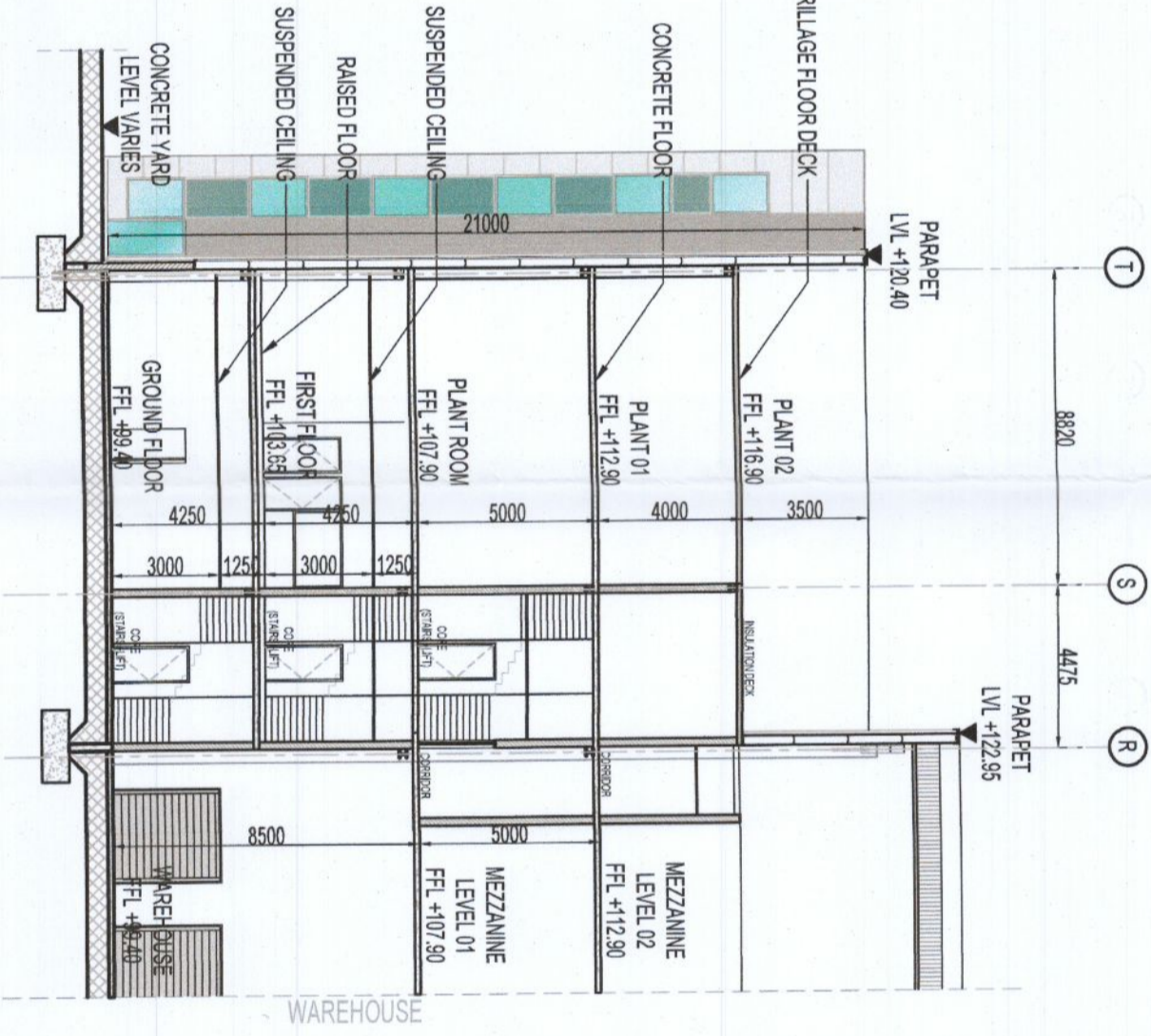
SECTION B-B
SCALE 1/200



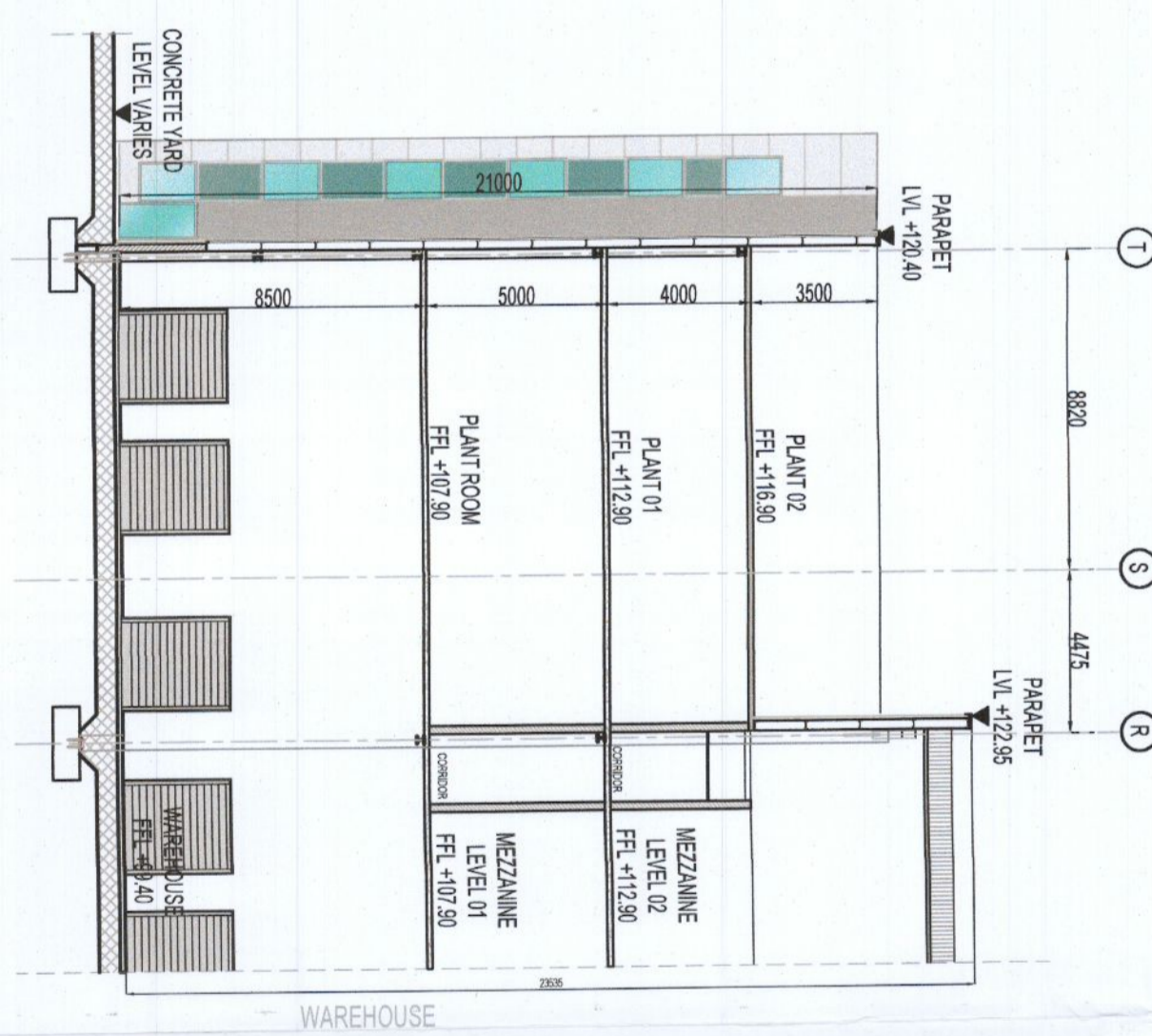
SECTION C-C
SCALE 1/200



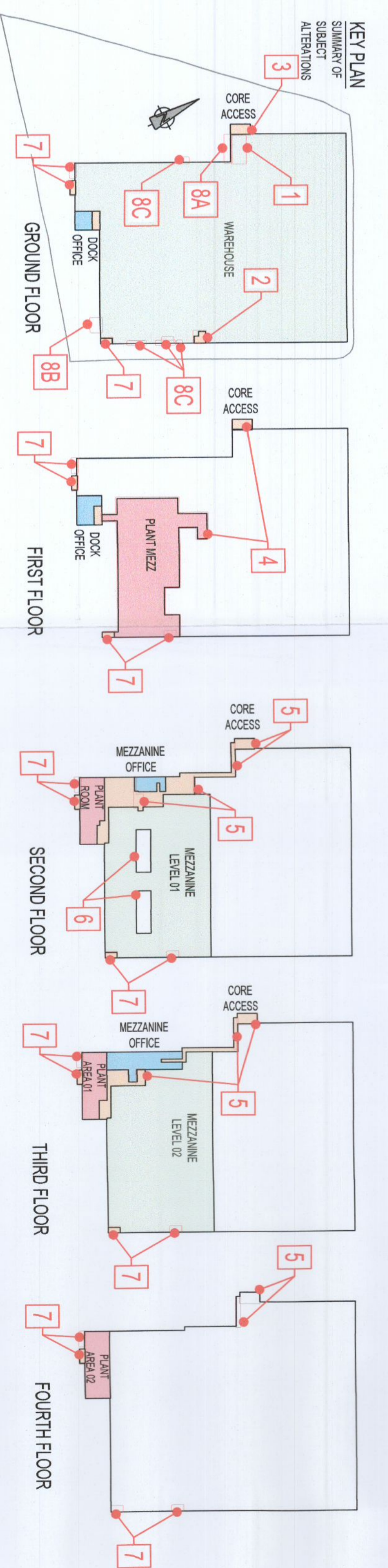
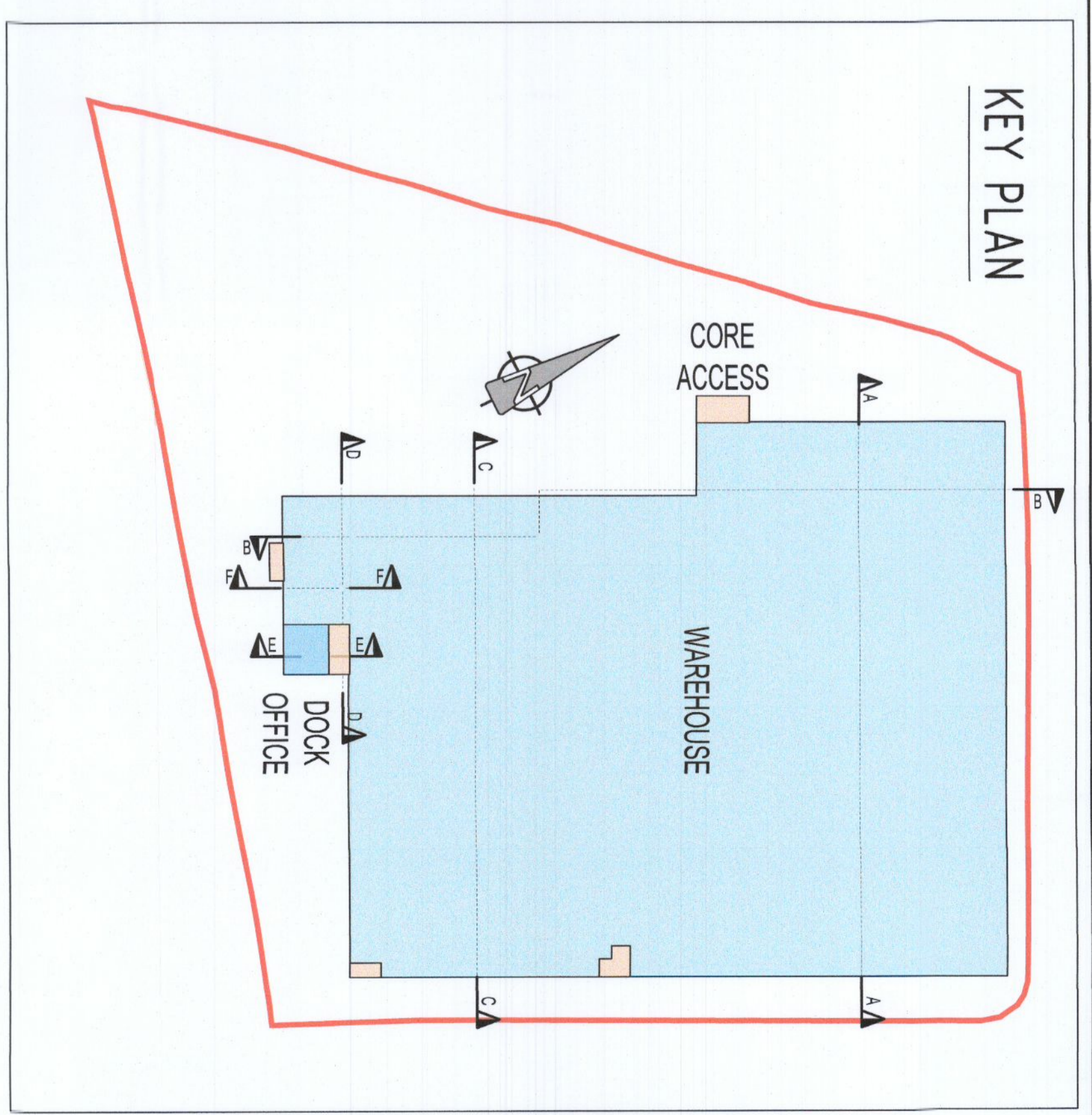
SECTION D-D
SCALE 1/200



SECTION E-E
SCALE 1/200



SECTION F-F
SCALE 1/200



- ATTENTIONS ARE AS FOLLOWS:**
- Change of use of floor of 2nd floor from Warehouse to Office use and the ground floor due to reduction of the building's near entrance area from 4.8m to 3.8m.
 - Change of use of 1st & 2nd Warehouse levels to Office use or ground floor due to introduction of proposed warehouse level docks at building's end wall.
 - Associated floor and walling area around floor due to administrative relocation of main entrance of new 1st floor level from 1st floor level to 1st floor level.
 - Reduction in mezzanine floor area by 20% to 2.0m x 2.0m.
 - Reduction of internal staircase at east end of the building to the south-east corner of the building and relocation of the structural column (internal view elevation) towards the east. There is no area change associated with this alteration.
 - Associated structural changes.
 - Reduction of dock height from 2.0m to 1.8m.
 - Reduction of dock height from 2.0m to 1.8m.
 - Reduction of dock height from 2.0m to 1.8m.
 - Reduction of dock height from 2.0m to 1.8m.
 - Reduction of dock height from 2.0m to 1.8m.
 - Reduction of dock height from 2.0m to 1.8m.
 - Reduction of dock height from 2.0m to 1.8m.
 - Reduction of dock height from 2.0m to 1.8m.
 - Reduction of dock height from 2.0m to 1.8m.
- PREVIOUS APPROVED DRAWING FOR RECORD PURPOSES.**
- Change of use of floor of 2nd floor from Warehouse to Office use and the ground floor due to reduction of the building's near entrance area from 4.8m to 3.8m.
 - Change of use of 1st & 2nd Warehouse levels to Office use or ground floor due to introduction of proposed warehouse level docks at building's end wall.
 - Associated floor and walling area around floor due to administrative relocation of main entrance of new 1st floor level from 1st floor level to 1st floor level.
 - Reduction in mezzanine floor area by 20% to 2.0m x 2.0m.
 - Reduction of internal staircase at east end of the building to the south-east corner of the building and relocation of the structural column (internal view elevation) towards the east. There is no area change associated with this alteration.
 - Associated structural changes.
 - Reduction of dock height from 2.0m to 1.8m.
 - Reduction of dock height from 2.0m to 1.8m.
 - Reduction of dock height from 2.0m to 1.8m.
 - Reduction of dock height from 2.0m to 1.8m.
 - Reduction of dock height from 2.0m to 1.8m.
 - Reduction of dock height from 2.0m to 1.8m.
 - Reduction of dock height from 2.0m to 1.8m.
 - Reduction of dock height from 2.0m to 1.8m.
 - Reduction of dock height from 2.0m to 1.8m.

PERMITTED DRAWING
(PROVIDED FOR RECORD PURPOSES ONLY)
SIOC GRANTED PLANNING REGISTRAR
REFERENCE NO. S22Z0009Z

PLANNING ALLOCATION GRANTED

DEVELOPMENT AT SITE C,
COLLEGE LANE GREENGUE
RATHCOOLE
CO. DUBLIN

ARCHITECTURAL SECTIONS
KAVANAGH BURKE
CONSULTING ENGINEERS
JORDANSTOWN PROPERTIES LTD
D1688 GA407 P16