

SITE ACCESS ROAD CONSTRUCTION DETAILS

SURFACE COURSE 40mm THICK
HOT ROLLED ASPHALT SURFACE COURSE IN ACCORDANCE WITH THE SPECIFICATION FOR HIGHWAY WORKS, CLAUSE 910. MIXTURE TO B.S. 594594: 2007 TABLE 6B WITH COARSE AGGREGATE CONTENT MINIMUM 30% OF NOMINAL AGGREGATE SIZE 14mm. LAID AND COMPACTED TO THE SPECIFICATION FOR HIGHWAY WORKS CLAUSES 701, 702 AND 901. PRE-COATED CHIPPINGS TO B.S. 594: Pt 1:1992 OF NOMINAL SIZE 20mm. MIN. P.S.V 60. TEXTURE DEPTH 0.9mm TO CLAUSES 915 AND 921.

BINDER COURSE 60mm THICK
DENSE BINDER COURSE IN ACCORDANCE WITH THE SPECIFICATION FOR HIGHWAY WORKS CLAUSE 906. MIXTURE TO B.S. 594987:2007 TABLE 6A 20mm NOMINAL AGGREGATE LAID AND COMPACTED TO THE SPECIFICATION FOR HIGHWAY WORKS CLAUSE 702 AND 901.

BASE COURSE 90mm THICK
BASE COURSE IN ACCORDANCE WITH THE SPECIFICATION FOR HIGHWAY WORKS CLAUSE 903. LAID AND COMPACTED TO CLAUSES 701, 702 AND 901. MIXTURE TO COMPLY WITH B.S. 594987:2007 TABLE 6A 32mm NOMINAL AGGREGATE SIZE.

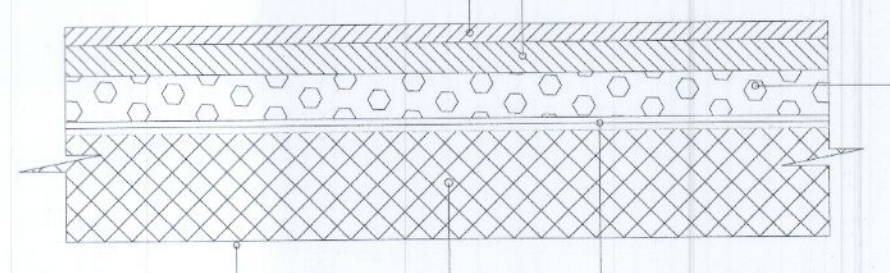
TYPE 1 SUB-BASE 225mm THICK
GRANULAR MATERIAL TYPE 1 TO CLAUSES 801 AND 803 OF THE SPECIFICATION FOR HIGHWAY WORKS LAID AND COMPACTED TO CLAUSE 802. ALTERNATIVE MATERIALS TO TYPE 1 (E.G. TYPE 2 TO CLAUSE 804 OR LOCALLY AVAILABLE FILL MATERIALS) MAY BE USED AT THE CONTRACTORS RISK SUBJECT TO AGREEMENT WITH THE ENGINEER. ALL TO CLAUSES 702.

FORMATION
FORMATION TO BE IN ACCORDANCE WITH THE SPECIFICATION FOR HIGHWAY WORKS CLAUSES 601, 616 AND 617.
GEOMEMBRANE
TERRAM 1000 OR SIMILAR TO BE LAID UNDER THE SUB-BASE, AS A SEPERATION BARRIER TO CLAUSE 609.

BULK FILL (WHERE REQUIRED)
GRANULAR MATERIAL CLASS IA, IB OR IC TO THE SPECIFICATION FOR HIGHWAY WORKS SPECIFICATION 601 AND 602. LAID AND COMPACTED TO CLAUSES 608 AND 612.

SUB-FORMATION
SUB-FORMATION TO BE IN ACCORDANCE WITH THE SPECIFICATION FOR HIGHWAY WORKS CLAUSES 601, 602, 603, 613 AND 617.

ANY DAMAGE TO BASE COURSE DURING MOVEMENT OF CONSTRUCTION TRAFFIC TO BE MADE GOOD TO SPECIFICATION FOR HIGHWAY WORKS CLAUSE 906 BY CONTRACTOR BEFORE LAYING OF FINISHED WEARING COURSE



MAIN CAR PARK CONSTRUCTION DETAILS.

SURFACE COURSE 30mm THICK
CLOSE GRAINED SURFACE COURSE IN ACCORDANCE WITH THE SPECIFICATION FOR HIGHWAY WORKS CLAUSE 912. MIXTURE TO B.S. 594987:2007 TABLE 6A, 10mm NOMINAL AGGREGATE LAID AND COMPACTED TO THE SPECIFICATION FOR HIGHWAY WORKS CLAUSES 702 AND 901.

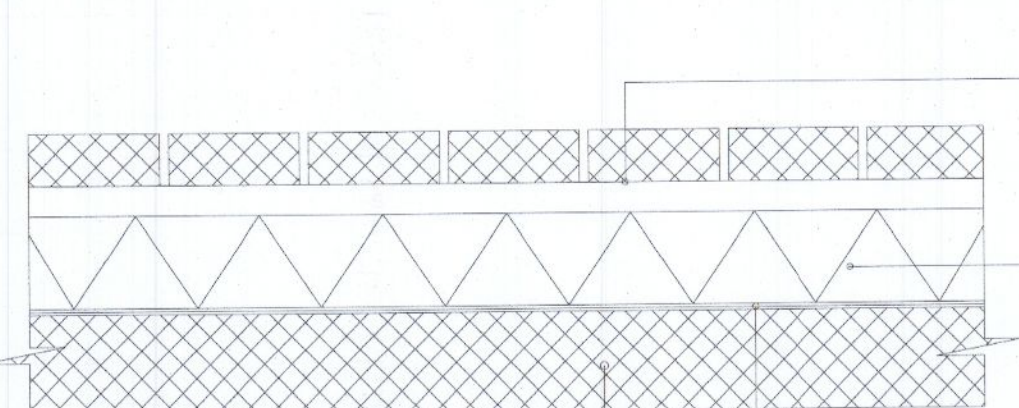
BINDER COURSE 60mm THICK
DENSE BINDER COURSE IN ACCORDANCE WITH THE SPECIFICATION FOR HIGHWAY WORKS CLAUSE 906. MIXTURE TO B.S. 594987:2007 TABLE 6A 20mm NOMINAL AGGREGATE LAID AND COMPACTED TO THE SPECIFICATION FOR HIGHWAY WORKS CLAUSE 702 AND 901.

TYPE 1 REGULATING COURSE 100mm

FORMATION
FORMATION TO BE IN ACCORDANCE WITH THE SPECIFICATION FOR HIGHWAY WORKS CLAUSES 601, 616 AND 617.
GEOMEMBRANE
TERRAM 1000 OR SIMILAR TO BE LAID UNDER THE SUB-BASE, AS A SEPERATION BARRIER TO CLAUSE 609.

BULK FILL (WHERE REQUIRED)
GRANULAR MATERIAL CLASS IA, IB OR IC TO THE SPECIFICATION FOR HIGHWAY WORKS 601 AND 602. LAID AND COMPACTED TO CLAUSES 608 AND 612.

SUB-FORMATION
SUB-FORMATION TO BE IN ACCORDANCE WITH THE SPECIFICATION FOR HIGHWAY WORKS CLAUSES 601, 602, 603, 613 AND 617.



NON-VEHICULAR PAVED AREAS: CONSTRUCTION DETAILS.

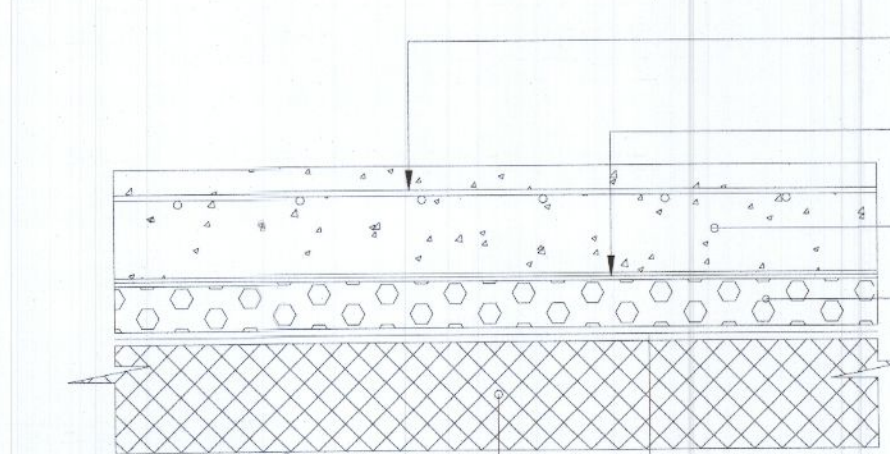
CONCRETE BLOCK PAVING
600x60x50 PAVING SLABS OR 200x100x60 PRECAST CONCRETE BLOCK PAVIORS (FOR LOCATION REFER TO ARCHITECTS DRAWINGS) ON 50mm THICK LAYING COURSE TO B.S. 6717:Pt 3:1989. LAID TO B.S. 6717:Pt 3:1989. COLOUR AND SHAPE OF BLOCK TO ARCHITECTS DETAIL.

SUB-BASE 150mm THICK
TYPE 1 GRANULAR MATERIAL TO CLAUSES 801 AND 803 OF THE THE SPECIFICATION FOR HIGHWAY WORKS LAID AND COMPACTED TO CLAUSE 802. ALTERNATIVE MATERIALS TO TYPE 1 (E.G. TYPE 2 TO CLAUSE 804 OR LOCALLY AVAILABLE FILL MATERIALS) MAY BE USED AT THE CONTRACTORS RISK SUBJECT TO AGREEMENT WITH THE ENGINEER. ALL TO CLAUSES 702 AND 705.

FORMATION
FORMATION TO BE IN ACCORDANCE WITH THE SPECIFICATION FOR HIGHWAY WORKS CLAUSES 601, 616 AND 617.
GEOMEMBRANE
TERRAM 1000 OR SIMILAR TO BE LAID UNDER THE SUB-BASE, AS A SEPERATION BARRIER TO CLAUSE 609.

BULK FILL (WHERE REQUIRED)
GRANULAR MATERIAL CLASS IA, IB OR IC TO THE SPECIFICATION FOR HIGHWAY WORKS 601 AND 602. LAID AND COMPACTED TO CLAUSES 608 AND 612.

SUB-FORMATION
SUB-FORMATION TO BE IN ACCORDANCE WITH THE SPECIFICATION FOR HIGHWAY WORKS CLAUSES 601, 602, 603, 613 AND 617.



CONCRETE HARDSTANDING CONSTRUCTION DETAILS

TOP REINFORCEMENT: 1 LAYER A252 MESH, 50mm COVER

POLYETHYLENE SHEET TO CLAUSE 1007 OF THE SPECIFICATION FOR HIGHWAY WORKS

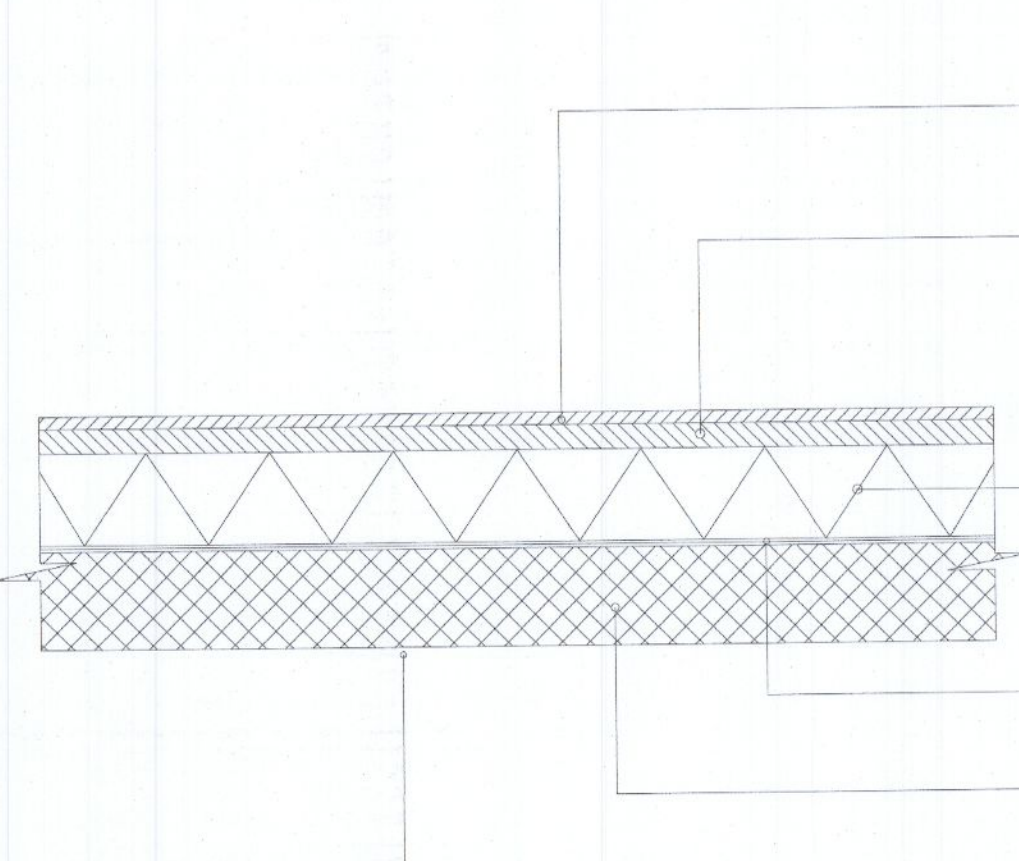
175mm THICK JOINTED REINFORCED CONCRETE SLAB TO THE SPECIFICATION FOR HIGHWAY WORKS CLAUSES 1001 TO 1034 INCLUSIVE.

TYPE 1 REGULATING COURSE 100mm

FORMATION
FORMATION TO BE IN ACCORDANCE WITH THE SPECIFICATION FOR HIGHWAY WORKS CLAUSES 601, 616 AND 617.
GEOMEMBRANE
TERRAM 1000 OR SIMILAR TO BE LAID UNDER THE SUB-BASE, AS A SEPERATION BARRIER TO CLAUSE 609.

BULK FILL (WHERE REQUIRED)
GRANULAR MATERIAL CLASS IA, IB OR IC TO THE SPECIFICATION FOR HIGHWAY WORKS 601 AND 602. LAID AND COMPACTED TO CLAUSES 608 AND 612.

SUB-FORMATION
SUB-FORMATION TO BE IN ACCORDANCE WITH THE SPECIFICATION FOR HIGHWAY WORKS CLAUSES 601, 602, 603, 613 AND 617.



FOOTPATH CONSTRUCTION DETAILS. FOR LOCATION REFER TO ARCHITECT'S DRAWINGS

SURFACE COURSE 20mm THICK
DENSE SURFACE COURSE IN ACCORDANCE WITH THE SPECIFICATION FOR HIGHWAY WORKS CLAUSE 912. MIXTURE TO B.S. 594987:2007 TABLE 6A, 6mm NOMINAL AGGREGATE LAID AND COMPACTED TO THE SPECIFICATION FOR HIGHWAY WORKS CLAUSES 702 AND 901.

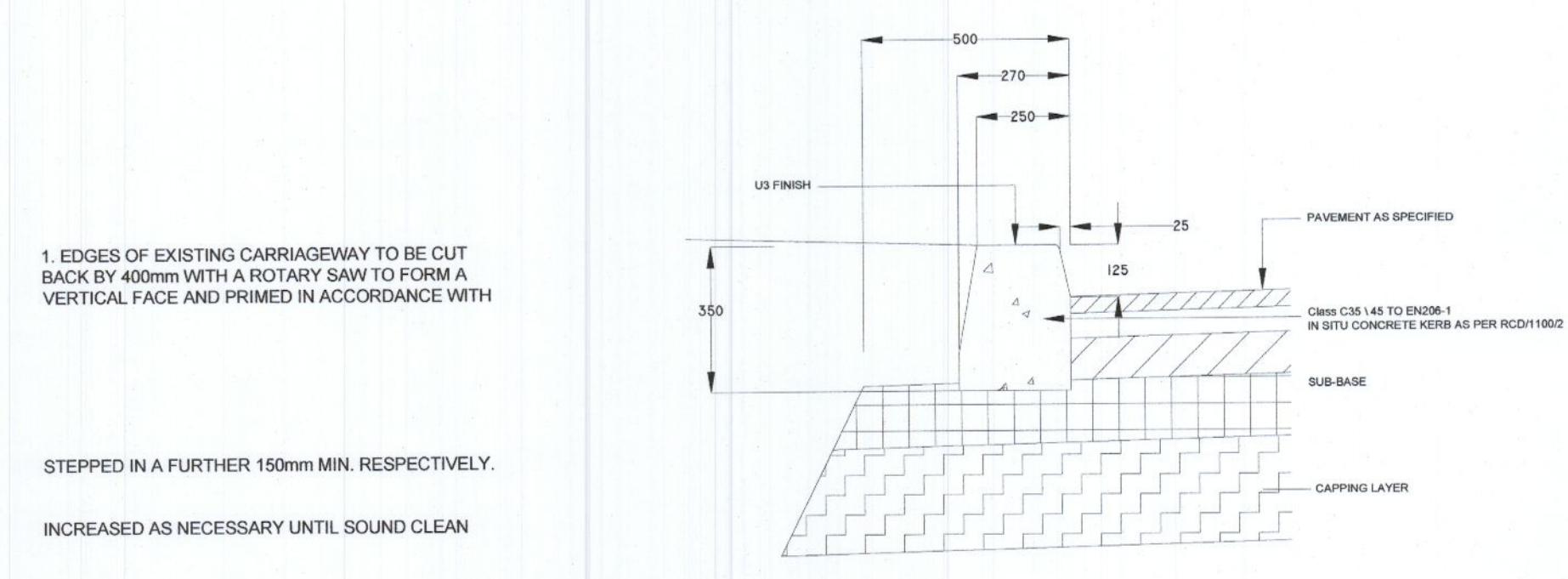
BINDER COURSE 50mm THICK
DENSE BINDER COURSE IN ACCORDANCE WITH THE SPECIFICATION FOR HIGHWAY WORKS CLAUSE 906. MIXTURE TO B.S. 594987:2007 TABLE 6A 20mm NOMINAL AGGREGATE LAID AND COMPACTED TO THE SPECIFICATION FOR HIGHWAY WORKS CLAUSE 702 AND 901.

SUB-BASE 150mm THICK
TYPE 1 GRANULAR MATERIAL TO CLAUSES 801 AND 803 OF THE SPECIFICATION FOR HIGHWAY WORKS LAID AND COMPACTED TO CLAUSE 802. ALTERNATIVE MATERIALS TO TYPE 1 (E.G. TYPE 2 TO CLAUSE 804 OR LOCALLY AVAILABLE FILL MATERIALS) MAY BE USED AT THE CONTRACTORS RISK SUBJECT TO AGREEMENT WITH THE ENGINEER. ALL TO CLAUSES 702.

FORMATION
FORMATION TO BE IN ACCORDANCE WITH THE SPECIFICATION FOR HIGHWAY WORKS CLAUSES 601, 616 AND 617.
GEOMEMBRANE
TERRAM 1000 OR SIMILAR TO BE LAID UNDER THE SUB-BASE, AS A SEPERATION BARRIER TO CLAUSE 609. TO BE PROVIDED AT THE DISCRETION OF THE ENGINEER.

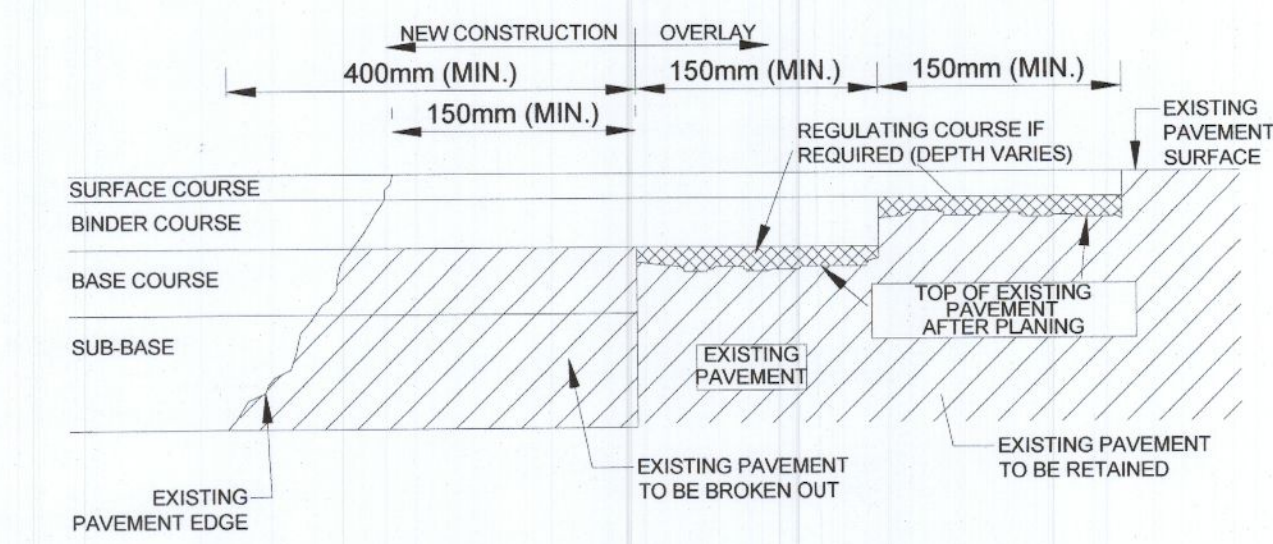
BULK FILL (WHERE REQUIRED)
GRANULAR MATERIAL CLASS IA, IB OR IC TO THE SPECIFICATION FOR HIGHWAY WORKS 601 AND 602. LAID AND COMPACTED TO CLAUSES 608 AND 612.

SUB-FORMATION
SUB-FORMATION TO BE IN ACCORDANCE WITH THE SPECIFICATION FOR HIGHWAY WORKS CLAUSES 601, 602, 603, 613 AND 617.



TYPE A IN-SITU FULL HEIGHT CONCRETE KERB

1. EDGES OF EXISTING CARRIAGEWAY TO BE CUT BACK BY 400mm WITH A ROTARY SAW TO FORM A VERTICAL FACE AND PRIMED IN ACCORDANCE WITH STEPPED IN A FURTHER 150mm MIN. RESPECTIVELY. INCREASED AS NECESSARY UNTIL SOUND CLEAN



JOINT BETWEEN NEW CONSTRUCTION AND EXISTING ROAD SCALE NTS

NOTES:

CLAUSE 920.

2. WHERE THE ROAD BASE IS TO BE LAID IN TWO LAYERS, THE UPPER LAYER OF ROAD BASE SHOULD BE STEPPED INTO THE EXISTING PAVEMENT BY 150mm MIN. WITH THE BINDER COURSE AND SURFACE COURSE TO BE EACH

3. CUTBACK AND BENCHING IN SHALL BE MATERIAL IS ENCOUNTERED.

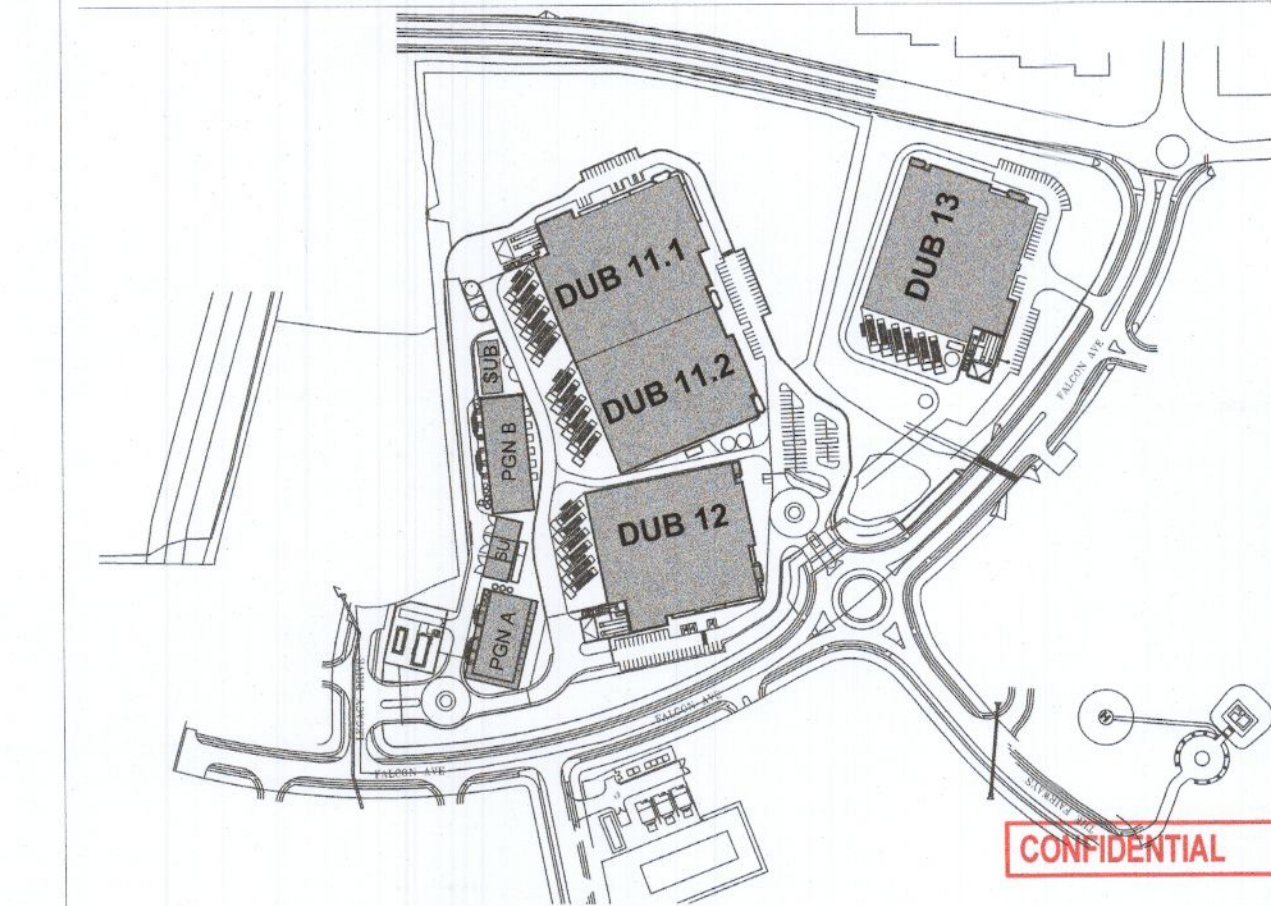
LOCATION	CONSTRUCTION	MINIMUM SUB-GRADE CBR			
		1%	2.5%	5%	15%
ACCESS ROADS	HRA/SHA SURFACE COURSE	40	40	40	40
	DBM BINDER COURSE	60	60	60	60
	DBM BASE COURSE	90	90	90	90
	TYPE 1 SUB-BASE	150	150	225	150
	SITE-SPECIFIC 6F2 CAPPING	350	150	0	0
CAR PARKS & AISLES	CONWCH SURFACE COURSE	30	30	30	30
	DBM BINDER COURSE	60	60	60	60
	DBM BASE COURSE	90	90	90	90
	TYPE 1 SUB-BASE	150	150	225	150
	SITE-SPECIFIC 6F2 CAPPING	350	150	0	0
SERVICE YARDS	PAVZ CONCRETE SLAB	175	175	175	175
	A252 MESH REINFORCEMENT	150	150	150	150
	TYPE 1 SUB-BASE	150	150	225	150
	SITE-SPECIFIC 6F2 CAPPING	350	150	0	0

THESE DETAILS ARE BASED ON A MINIMUM SUB-GRADE CBR OF 2% REFER TO TABLE BELOW FOR ALTERNATIVE CBR VALUES

CAPPING TO BE ADJUSTED TO SUIT CBR VALUES. SEE TABLE, IF IN ANY DOUBT CONSULT ENGINEER

FOR LOCATION AND EXTENT OF TYPES OF CONSTRUCTION REFER TO DRAWING 210

V2	09/09/2022	AMB	SO'R	ISSUED FOR PLANNING
Rev	Rev Date	Drawn By	Checked By	Description



CONFIDENTIAL

Client: **VANTAGE**
 Mechanical/Electrical/Public Health/Automotive/Telecom/Security/Fire Protection Engineer

Architect: **PINNACLE CONSULTING ENGINEERS**
 PINNACLE CONSULTING ENGINEERS
 Archery, Bessmer Rd, Wilsay Garden City, AL7 1HE, United Kingdom

Structural/Civils Engineer: **BURNS & MEDONNELL**
 10 Bishops Square, London E1 6AD, United Kingdom

Structural/Civils Engineer: **PINNACLE CONSULTING ENGINEERS**
 Archery, Bessmer Rd, Wilsay Garden City, AL7 1HE, United Kingdom

BIM coordinator: **AMB** Approved by: **JM** Checked by: **SO'R** Drawn by: **AMB**

Project address: **Profile Park, Dublin 22, Ireland 53° 19' 1.40"N 6° 26' 40.80"W**

Drawing title: **EXTERNAL WORKS DETAILS** Sheet number: **C505**

Format / Size: **A1** Scale: **1:500** Status: **ISSUED** Date: **09/09/2022** File Code: **DUB13-DR-XX-C505-V2-WS3-PIN** Rev: **V2**

PLANNING SUBMITTAL NOT FOR CONSTRUCTION