

**Notes:**

1. THIS DRAWING IS TO BE READ IN CONJUNCTION WITH ALL RELEVANT ARCHITECTS AND ENGINEERS DRAWINGS AND SPECIFICATIONS.
2. DO NOT SCALE THIS DRAWING, ANY AMBIGUITIES, OMISSIONS AND ERRORS ON DRAWINGS SHALL BE BROUGHT TO THE ENGINEERS ATTENTION IMMEDIATELY. ALL DIMENSIONS MUST BE CHECKED / VERIFIED ON SITE, OTHERWISE.
3. ALL DIMENSIONS ARE IN MILLIMETRES UNLESS NOTED OTHERWISE.
4. FOR GENERAL NOTES REFER TO DRAWING.
5. ALL FOLL DRAINAGE WORKS TO BE IN ACCORDANCE WITH IRISH WATERS' CODE OF PRACTICE FOR WASTEWATER SUPPLY AND WASTEWATER INFRASTRUCTURE STANDARD DETAILS.
6. FOLL SEWERS TO BE THERMOPLASTIC STRUCTURED WALL PIPES (COMPLYING WITH THE PROVISION OF IS EN 13478 AND WIS 4-35-01-2000 AND COMPLY WITH THE REQUIREMENTS OF THE IRISH WATER CODE OF PRACTICE.
7. WATERMAIN INSTALLATION AND ALL WATER SUPPLY WORKS TO BE IN ACCORDANCE WITH THE REQUIREMENTS OF IRISH WATERS CODE OF PRACTICE FOR WATER SUPPLY AND WATER INFRASTRUCTURE STANDARD DETAILS.
8. WATERMANS TO BE TYPE HPPE, PE-400, SDR-17 RATED AND SHALL CONFORM TO IS EN 12201 (PART 1, PART 2, & PART 3).
9. WATERMAIN SERVICE CONNECTION PIPES TO BE HDPE (PE-80) MATERIAL WITH SDR-17 RATING).

**MINIMUM MANHOLE DIAMETER "D"**

DIAMETER OF LARGEST PIPE IN MANHOLE (mm)	INTERNAL DIAMETER OF MANHOLE (mm)
LESS THAN 375	1200
375 TO 450	1350
500 TO 750	1500

**ROCKER PIPE LENGTH**

PIPE DIAMETER (mm)	ROCKER PIPE LENGTH (mm)
150 TO 600	600
GREATER THAN 600 TO 750	1000
GREATER THAN 750	1250

**TRENCH WIDTHS-FLEXIBLE PIPES**

NOMINAL PIPE DIAMETER (mm)	100	150	200	250	300	400	450	500	600	700	800	900	1050	1200	1350
TRENCH WIDTH MIN (mm) (W)	420	500	600	700	800	1050	1150	1250	1400	1550	1700	1850	2100	2300	2450
TRENCH WIDTH MAX (mm) (W)	600	700	800	900	1000	1300	1400	1500	1600	1750	1900	2050	2300	2500	2650

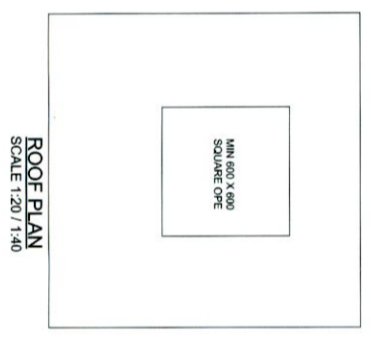
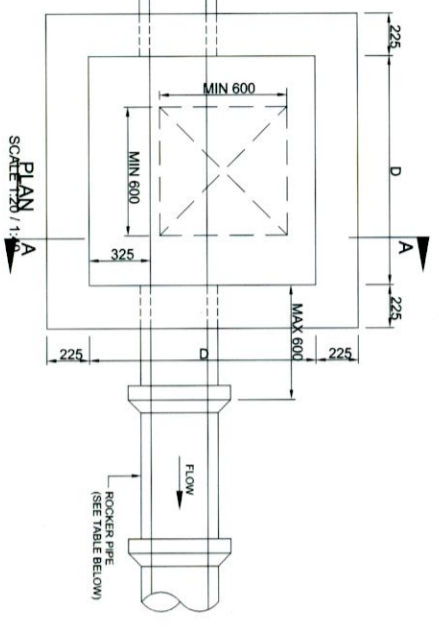
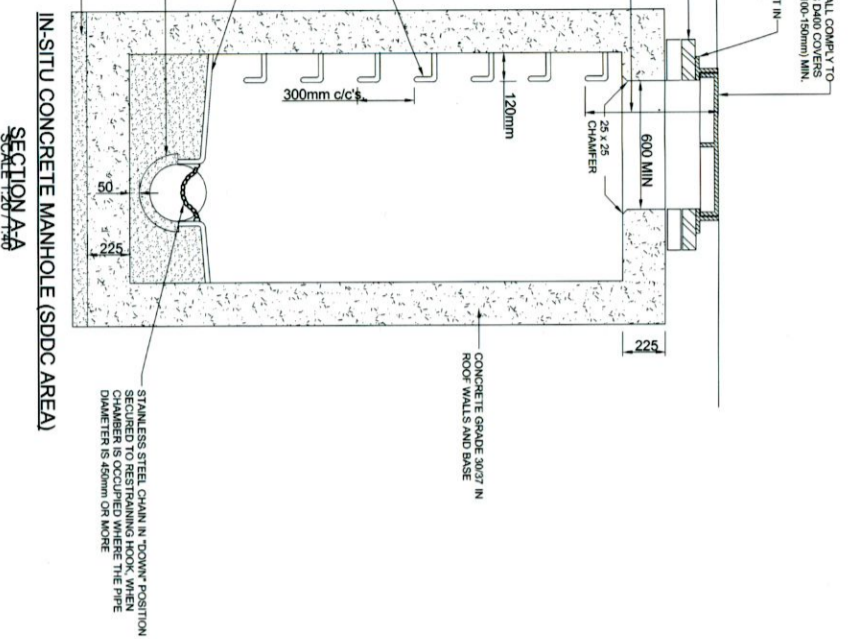
**DIMENSIONS-"bc"**

NOMINAL PIPE DIAMETER (mm)	100-400 incl	500-600 incl	700	900	1050	1200
bc (mm)	100	150	200	225	250	300

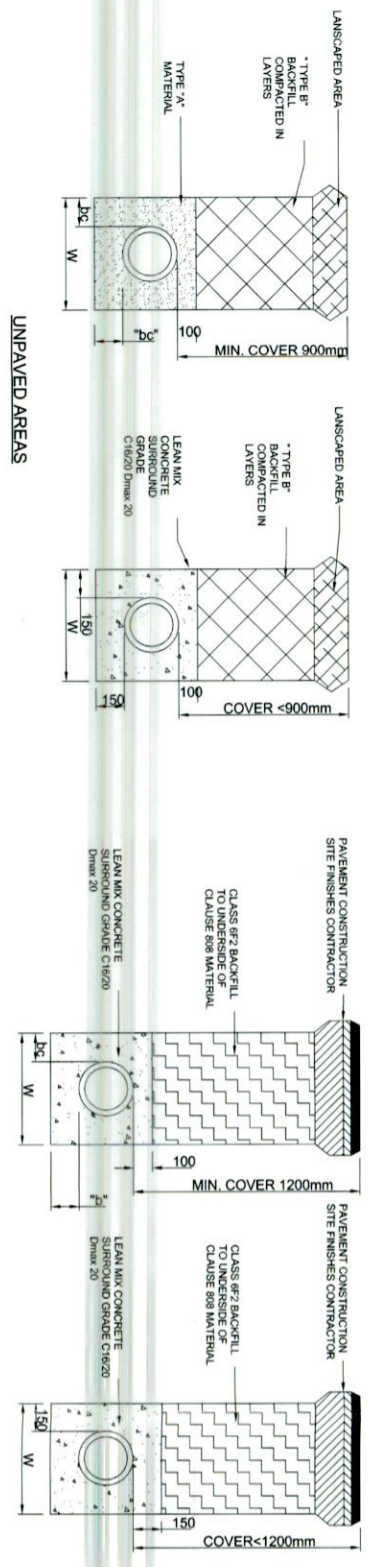
DIMENSION-"a"	PIPES UP TO AND INC. PIPES GREATER THAN 100mm	PIPES GREATER THAN 100mm	PIPES GREATER THAN 200mm	PIPES GREATER THAN 300mm
UNIFORM SOIL	100mm	150mm	200mm	250mm
ROCK	100mm	150mm	200mm	250mm

**TYPE "A" MATERIAL:**  
 BROKEN STONE OR GRAVEL, GRADING AS FOLLOWS:-  
 1) RIGID PIPES - PIPE DIAMETER UP TO AND INCLUDING 600mm  
 SIEVE SIZE GREATER THAN 5mm AND LESS THAN 12mm  
 PIPE DIAMETER GREATER THAN 600mm DIA  
 SIEVE SIZE GREATER THAN 5mm AND LESS THAN 19mm  
 2) FLEXIBLE PIPES: SIEVE SIZE GREATER THAN 5mm AND LESS THAN 10mm

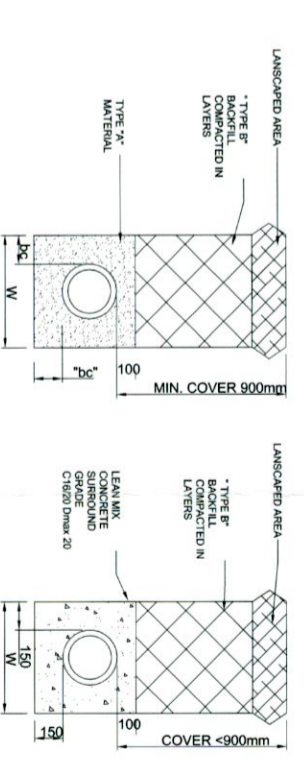
**TYPE "B" MATERIAL:**  
 SELECTED FILL UNIFORM READILY COMPACTABLE MATERIAL FROM: CLAY LUMPS RETAINED ON 75mm SIEVE, STONES RETAINED ON 25mm SIEVE, TREE ROOTS, VEGETABLE MATTER, BUILDING RUBBISH AND FROZEN SOIL.



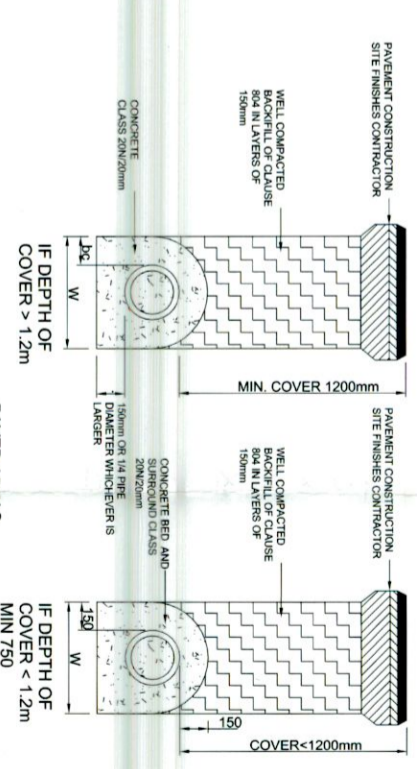
**TRENCH WIDTHS-RIGID PIPES**



**UNPAVED AREAS**



**PAVED AREAS**



**PIPE TRENCH DETAILS (SDDC AREA)**

SCALE 1:20

**PROJECT:** LARKFIELD HOUSE

**TITLE:** TYPICAL DETAILS SHEET 1 of 3

**DATE:** AUG 22

**STATUS:** PLANNING

**REVISIONS:** 1:20

**DESIGNED BY:** RPH

**CHECKED BY:** EH

**DATE:** 24.08.22

**PROJECT NO:** 22074-TNT-XX-FN-DR-C-92010

**SHEET NO:** P01