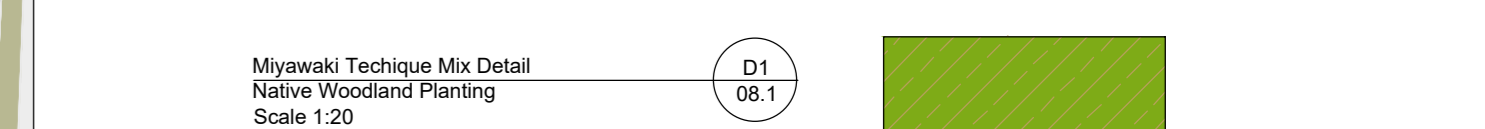
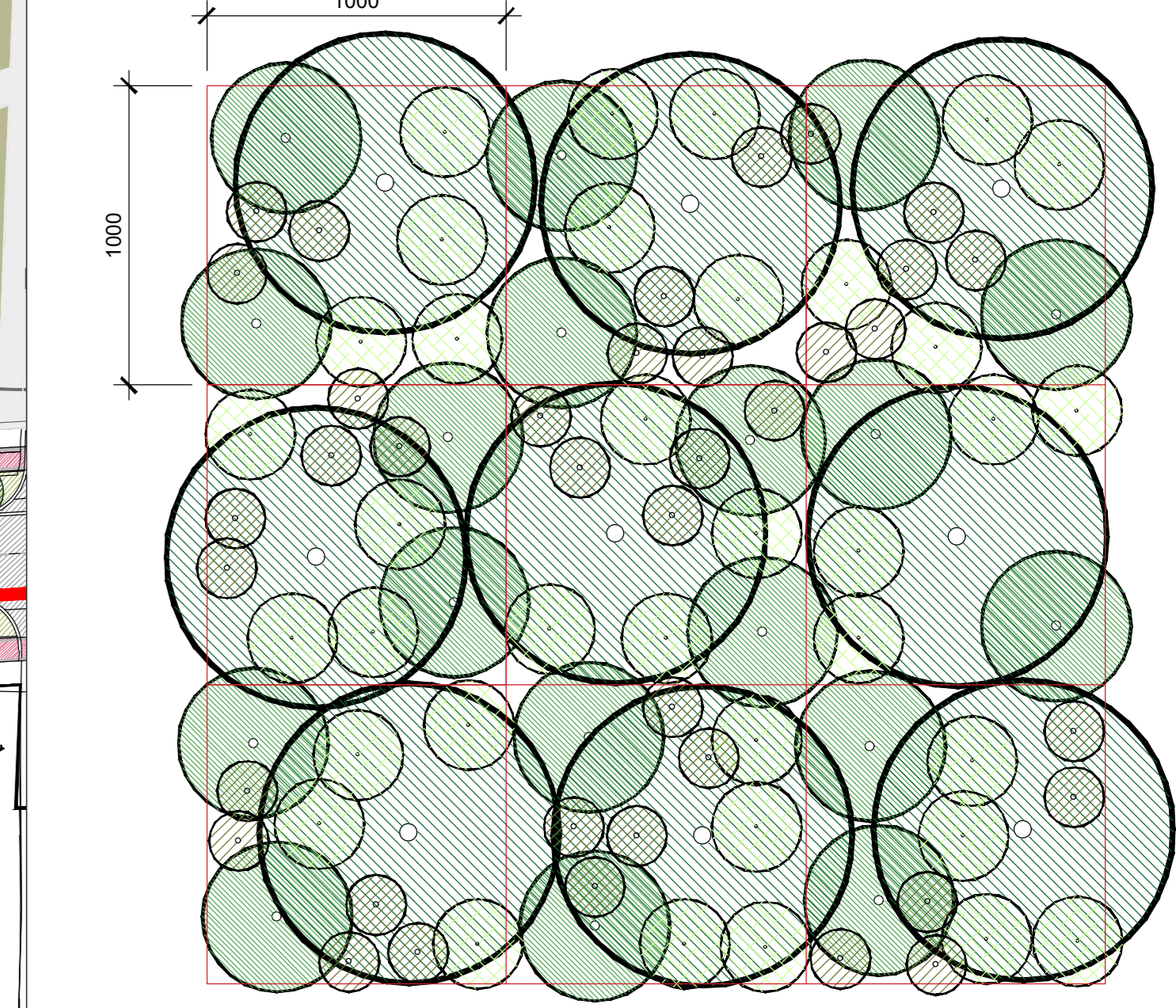




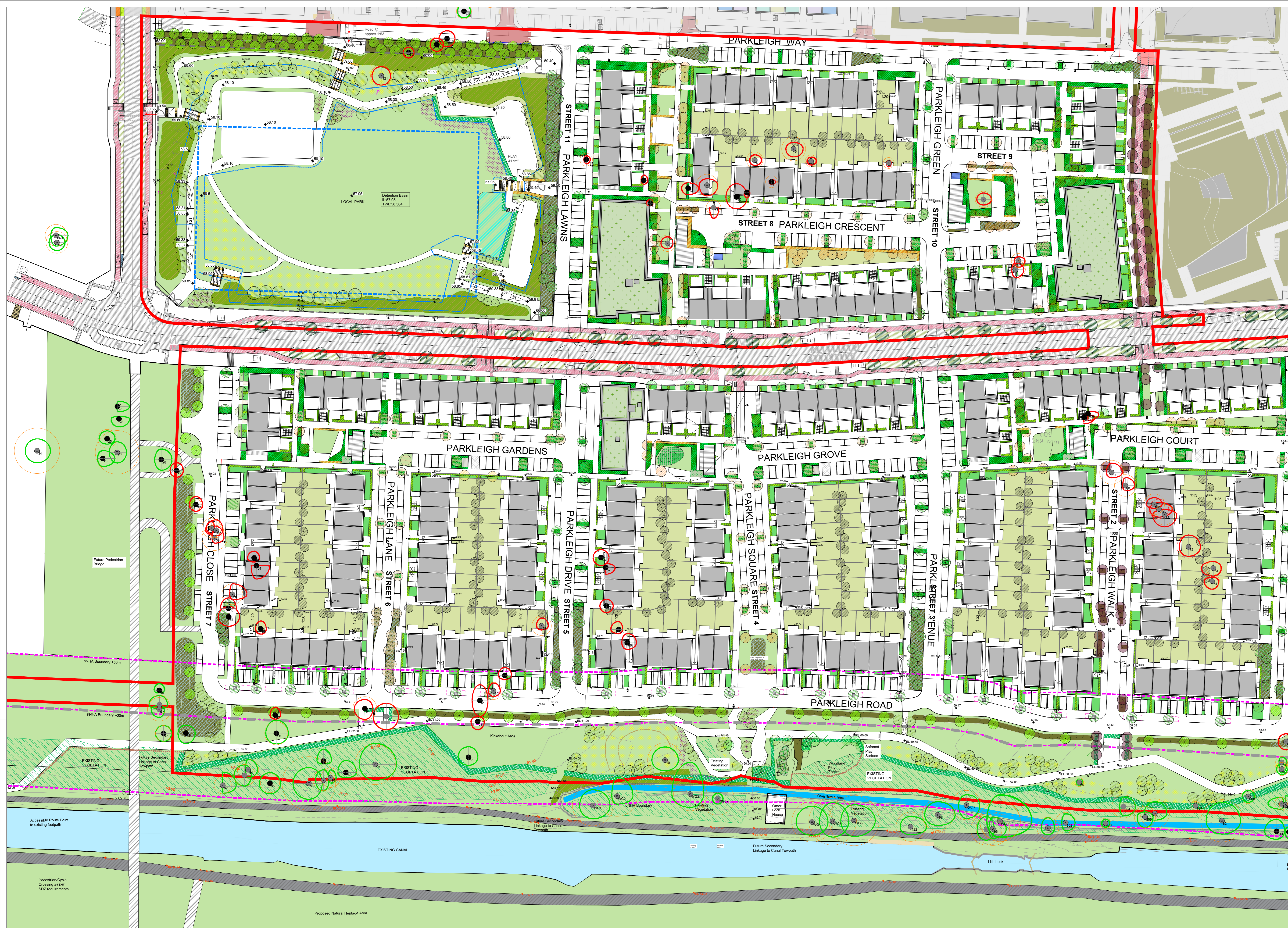
Key Plan - Scale 1:5000



Miyawaki Technique Mix Detail Native Woodland Planting Scale 1:20



- Trees - approximately 11q.m**  
Pinus sylvestris (\*), Quercus robur (\*), Populus tremula (\*\*)
- Sub-Trees - approximately 21q.m**  
Pinus avium (\*), Sorbus aria (\*), Sorbus aucuparia (\*\*)
- Shrubs - approximately 43q.m**  
Cornus sanguinea (\*), Rosmarinus officinalis (\*\*), Viburnum opulus (\*), Rosa canina (\*), Eucryphia europaea (\*\*)
- Small Shrubs/Greases - approximately 51q.m**  
Cornus rugosa (\*), Populus alba (\*), Asplenium scolopendrium (\*), Rosa pimpinifolia (\*\*)



- SOFT LANDSCAPE**
- Existing Trees**  
to be retained
- Existing Trees**  
to be removed
- Existing Vegetation to Canal boundary and Fossil fill**  
(min. 200mm topsoil depth)
- Proposed Street Trees**  
(min. 200mm topsoil depth)
- Tree Pit in Paving - Structural Soil where shown**
- Link Street**  
20-25cm grth. To include the following species:  
Fila cordata 'Greenspire', Platanus orientalis 'Minor',  
Acer campestre (\*), Fila cordata 'Greenspire', Fagus sylvatica
- Green Corridor**  
20-25cm grth. To include the following species:  
Acer campestre (\*), Fila cordata 'Greenspire', Fagus sylvatica
- Local Streets**  
18-20cm grth. To include the following species:  
Alnus glutinosa (\*), Betula pubescens (\*\*), Cornus betulinus (\*), Acer camp 'Elegant'

- Small Residential Streets/Homesone**  
16-18cm grth. To include the following species:  
Cornus avellana(\*), Prunus tinctoria(\*), Pyrus calleryana 'Chanticleer', Magnolia kobus
- Proposed Open Space Trees**  
(min. 800mm topsoil depth)
- Parkland Trees**  
12-14cm - 14-16cm grth. To include the following species:  
Acer campestre (\*), Alnus glutinosa (\*), Betula pendula (\*), Fagus sylvatica (\*), Pinus sylvestris (\*\*), Prunus avium (\*), Pinus parviflora (\*), Sorbus aria, Sorbus aucuparia (\*\*), Quercus robur (\*), Betula nigra, Crataegus monogyna (\*\*), Salix alba 'Trinity', Ulmus 'Lobel', Cornus avellana (\*), Castanea sativa (\*), Juglans nigra (5% of trees to be 20-25cm grth.)
- Urban Edge**  
16-18cm grth. To include the following species:  
Acer campestre 'Elegant', Fila cordata 'Greenspire', Ulmus 'Lobel', Betula pubescens (\*\*)

- Proposed Communal Open Spaces/Residential Trees**
- Communal Open Space/Apt/Duplex Trees/Specimen Ornamental**  
Container Trees: 14-16cm grth. To include the following:  
Magnolia 'Evershade', Liquidambar styraciflua, Prunus serotina, Magnolia kobus, Sorbus 'Lionel Rock', Crataegus lanuginea 'Paul's Scarlet', Multi-stemmed hollies trees: 3-5m height, min 3 breaks from base  
Amelanchier lamarckii, Betula alba 'Jaquemonii', Liquidambar styraciflua (5% of trees to be 30-35cm grth.)
- Rear Garden Trees**  
(min. 800mm topsoil depth)  
8-10 cm grth. To include the following species:  
Betula pendula (\*), Prunus avium (\*\*), Malus 'Evershade'
- Native Woodland Planting**  
(min. 400mm topsoil depth)  
BRR 60-120cm (90%) & 8-10cm grth (10%), @ 1 per m<sup>2</sup>  
To include the following species:  
Alnus glutinosa (\*), Betula pendula (\*), Betula pubescens (\*\*), Castanea monogyna (\*\*), Prunus malus (\*), Quercus robur (\*), Prunus avium (\*\*), Acer campestre (\*), Prunus serotina (\*\*), Salix alba (\*), Prunus padus (\*\*), Corylus avellana (\*), Pinus sylvestris (\*\*)

- Street/Public Realm Planting**  
Area under control of management company (min. 400mm topsoil depth)  
Container: Green Street 20cm @ 5 per m<sup>2</sup>. To include the following:  
Larix laricina, Thuja occidentalis, Prunus serotina, Sorbus aucuparia (\*\*), Viburnum opulus (\*\*), Corylus avellana (\*), Fagus sylvatica (\*\*), Pinus sylvestris (\*\*), Prunus avium (\*), Prunus parviflora (\*), Sorbus aria, Sorbus aucuparia (\*\*), Quercus robur (\*), Betula nigra, Crataegus monogyna (\*\*), Salix alba 'Trinity', Ulmus 'Lobel', Cornus avellana (\*), Castanea sativa (\*), Juglans nigra (5% of trees to be 30-35cm grth.)
- Open Space Hedge Planting**  
(min. 400mm topsoil depth)  
Double-staged, BRR, min 60-80cm height  
Ilex aquifolium (\*\*), Viburnum opulus (\*\*), Corylus avellana (\*), Fagus sylvatica (\*\*), Pinus sylvestris (\*\*), Prunus avium (\*), Prunus parviflora (\*), Sorbus aria, Sorbus aucuparia (\*\*), Quercus robur (\*), Betula nigra, Crataegus monogyna (\*\*), Salix alba 'Trinity', Ulmus 'Lobel', Cornus avellana (\*), Castanea sativa (\*), Juglans nigra (5% of trees to be 30-35cm grth.)
- Open Space Native Hedge**  
(min. 200mm topsoil depth)  
Double-staged, BRR, 60-120cm. To include:  
Cotoneaster monogyna (\*), Corylus avellana, Eucryphia europaea, Ilex aquifolium, Lonicera periclymenum (\*\*), Viburnum opulus (\*\*), Ilex spp (\*\*), Prunus avium (\*), Prunus serotina (\*\*), Rosa canina (\*\*)
- Planted Seals**  
(min. 300 / 450 mm topsoil depth)  
To be seeded with native & pollinator perennial wildflowers harvested from the Dublin area using the green hat seeding technique or native seed mix to be agreed w/ project ecologist and SODCC Parks department, subject to approval of NPWS if required. This approach will ensure consistency w/ Ecological Survey of Clonsilla (PERS Ltd, 2018).  
Typical species used to the area and suitable for sealing planting:  
Thymus latifolius (\*), Schizanthus luteus (\*\*), Phacelia grandiflora (\*), Desmodium illinoense (\*\*), Prunella vulgaris (\*\*), Oenothera craccobita (\*).  
(also refer to Engineer's drawings no.: CLB-1A-94-SW-DTM-DR-DBFL-CE-1202 - SUDS Overview layout)

- Bioretention Area**  
(min. 300 / 450 mm topsoil depth)  
Double-staged, BRR, min 60-80cm height  
Planting list as per Swale proposal (refer to Engineer's drawings no.: CLB-1A-94-SW-DTM-DR-DBFL-CE-1302 - SUDS Overview layout)
- Amenity Grass Lawn**  
(min. 200mm topsoil depth)  
Columbus Utility / Play Grass Seed Mix or similar and approved
- Garden Lawn**  
(min. 200mm topsoil depth)  
Columbus Greenlaw Grass Seed Mix or similar and approved
- Native Meadow Grass**  
(min. 200mm topsoil depth)  
Buffs to be incorporated at 30 bulbs per sq. meter. Mowing to be reduced in accordance with suppliers instructions. To include:  
Crocus tomentosus 'Barn Purple', Crocus vernus 'Soleira d'Arc', Crocus vernus 'Golden Yellow', Muscar autumnum, Hyacinthoides non-scripta, Narcissus 'Jack Snipe', Narcissus recurvus, Narcissus 'W.P. Milner'

- Climbers - Green Wall Planting with trellis**  
Metal climbing structure along bin stores facade. Stainless steel wire trellis. Supplier: Jakob Rope Systems or similar approved. To include:  
Hedera helix, Lonicera periclymenum, Pyracantha coccinea.
- Wet Area**  
Bio-retention area receiving runoff from adjacent swales (refer to Engineer's drawings no.: CLB-1A-94-SW-DTM-DR-DBFL-CE-1302 - SUDS Overview layout)
- Proposed Green Roof**  
as per architect specifications.

- Note:**  
(\*) Native Plants Species;  
(\*\*) Plants for Pollinators. These plants will provide nectar and pollen for bees and the many other types of pollinating insects. (REF: All-Ireland Pollinator Plan)
- (E) Evergreen Species

- 1. Bird and Bat Boxes to be included on appropriate trees and to protect ecologist's specification and location.
- 2. Insect hotels to be included at appropriate locations as per ecologist's specification.

Note:  
refer to drawing no. 1738\_PLC\_P\_00 for Masterplan;  
- 1738\_PLC\_P\_01 for Masterplan - 0102;  
- 1738\_PLC\_P\_02 for Masterplan - 0202;  
- 1738\_PLC\_P\_02\_1 for Boundary Treatment Plan & Details | Residential Boundary;  
- 1738\_PLC\_P\_02\_2 for Boundary Treatment Plan & Details | Open Space Boundary;  
- 1738\_PLC\_P\_04.1 for Soft Landscape Plan - 0102;  
- 1738\_PLC\_P\_04.2 for Soft Landscape Plan - 0202;  
- 1738\_PLC\_P\_05 for Removal/Retain/Compensatory Planting Plan;  
- 1738\_PLC\_P\_01 for Hedge and Tree Protection Plan;  
- 1738\_PLC\_P\_01\_1 for Hedge & Tree Protection Plan Zoom Area;  
- 1738\_PLC\_ExView\_01 for Pre Development Photos and Location Map.

PROJECT FILE  
RESIDENTIAL DEVELOPMENT  
CLONSILLA

SHEET NO. 1738\_PLC\_P\_04.1  
SHEET DATE AD  
DATE 17/11/22  
SCALE 1:500  
STAGE Planning Compliance  
DATE 17/11/22