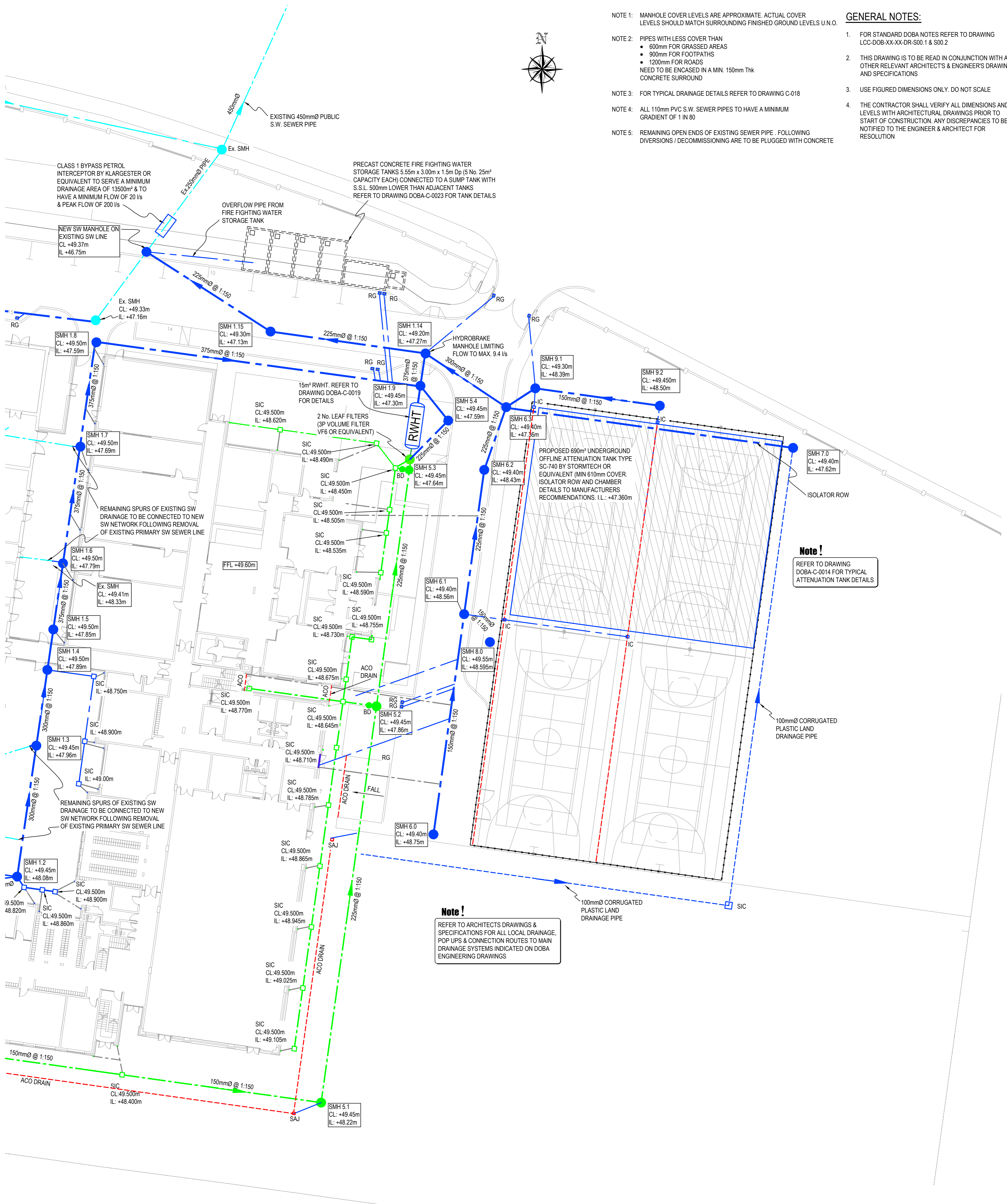




- NOTE 1: MANHOLE COVER LEVELS ARE APPROXIMATE. ACTUAL COVER LEVELS SHOULD MATCH SURROUNDING FINISHED GROUND LEVELS U.N.O.
- NOTE 2: PIPES WITH LESS COVER THAN
 • 600mm FOR GRASSED AREAS
 • 900mm FOR FOOTPATHS
 • 1200mm FOR ROADS
 NEED TO BE ENCASED IN A MIN. 150mm THK CONCRETE SURROUND
- NOTE 3: FOR TYPICAL DRAINAGE DETAILS REFER TO DRAWING C-018
- NOTE 4: ALL 110mm PVC S.W. SEWER PIPES TO HAVE A MINIMUM GRADIENT OF 1 IN 80
- NOTE 5: REMAINING OPEN ENDS OF EXISTING SEWER PIPE FOLLOWING DIVERSIONS / DECOMMISSIONING ARE TO BE PLUGGED WITH CONCRETE

GENERAL NOTES:

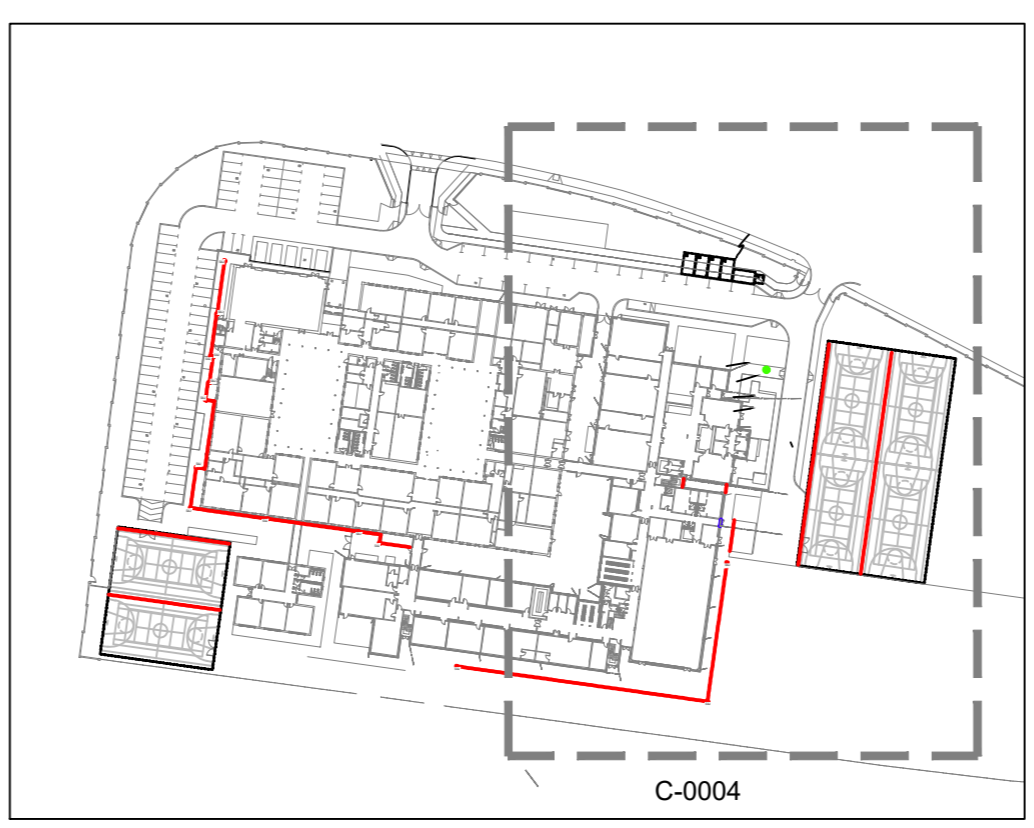
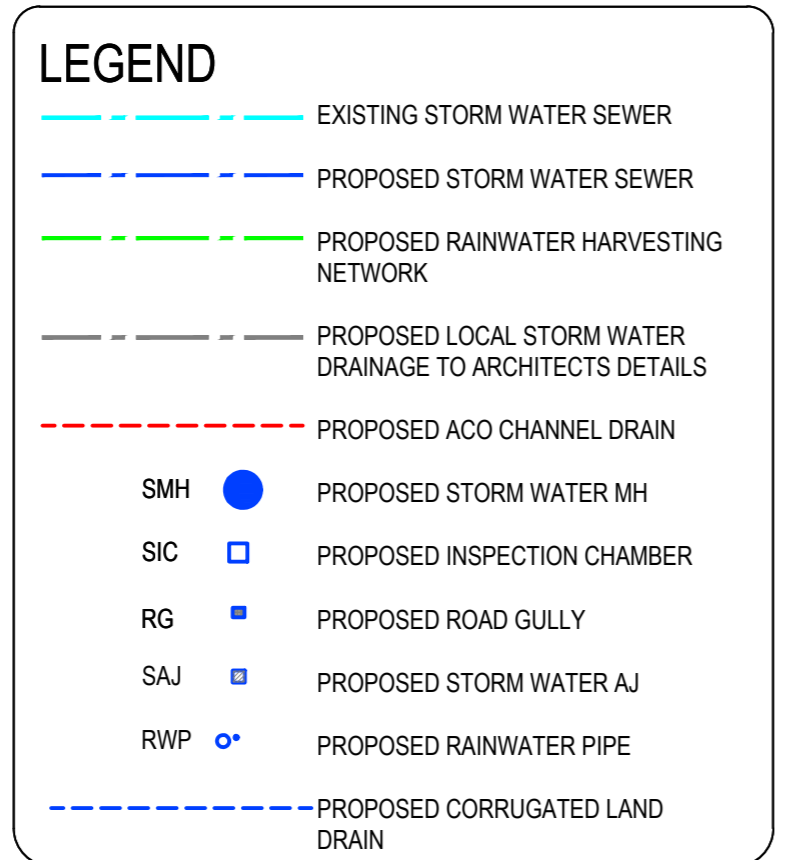
- FOR STANDARD DOBA NOTES REFER TO DRAWING LCC-DOB-XX-XX-DR-S00.1 & S00.2
- THIS DRAWING IS TO BE READ IN CONJUNCTION WITH ALL OTHER RELEVANT ARCHITECT'S & ENGINEER'S DRAWINGS AND SPECIFICATIONS
- USE FIGURED DIMENSIONS ONLY. DO NOT SCALE
- THE CONTRACTOR SHALL VERIFY ALL DIMENSIONS AND LEVELS WITH ARCHITECTURAL DRAWINGS PRIOR TO START OF CONSTRUCTION. ANY DISCREPANCIES TO BE NOTIFIED TO THE ENGINEER & ARCHITECT FOR RESOLUTION



Note !
REFER TO DRAWING DOBA-C-0014 FOR TYPICAL ATTENUATION TANK DETAILS

Note !
REFER TO ARCHITECTS DRAWINGS & SPECIFICATIONS FOR ALL LOCAL DRAINAGE, POP UPS & CONNECTION ROUTES TO MAIN DRAINAGE SYSTEMS INDICATED ON DOBA ENGINEERING DRAWINGS

- NOTES:**
- REFER TO SURVEY DRAWINGS FOR EXISTING SERVICES LAYOUTS AND MANHOLE INFORMATION
 - DECOMMISSIONING & REMOVAL OF SERVICES TO TAKE PLACE FOLLOWING DEPARTING OF SCHOOL FROM EFFECTED BUILDINGS U.N.O.
 - WORKS TAKING PLACE OUTSIDE OF DESIGNATED CONTRACTORS SITE ARE TO BE CARRIED OUT DURING SCHOOL HOLIDAY PERIODS
 - ALL EXISTING SURFACES TO BE REINSTATED FOLLOWING DIVERSION OF SERVICES/CONSTRUCTION OF NEW SERVICES AT PHASE 0
- PIPE SIZES:**
- ALL PIPE RUNS BETWEEN MANHOLES TO BE 225Ø U.N.O
 - ALL PIPE RUNS BETWEEN INSPECTION CHAMBERS TO BE 150Ø U.N.O
 - ALL PIPE RUNS BETWEEN AJs AND FROM RAINWATER PIPES OR GULLIES TO BE 110Ø U.N.O



FOR INFORMATION ONLY

D2.P03	REVISED FOR PLANNING COMPLIANCE SUBMISSION	29.09.2022	TN	TN
D2.P02	REVISED FOR TENDER	26.11.2019	RR	RK
D2.P01	ISSUED FOR TENDER	27.09.2019	RR	RK
Rev.	Note	Date	Drawn	Check

DONNACHADH O'BRIEN & ASSOCIATES CONSULTING ENGINEERS
 UNIT 5C ELM HOUSE MILLENNIUM PARK NAAS CO. KILDARE
 PHONE: +353 45 984 042
 INFO@DOBRIEN-ENGINEERS.IE WWW.DOBRIEN-ENGINEERS.IE

Client: DUBLIN & DUN LAOGHAIRE ETB
 Project: LUCAN COMMUNITY COLLEGE
 Drawing Title: SURFACE WATER DRAINAGE SHEET 2 OF 2

Drawn By: RR	Checked By: RK	Approved By: DOB	Date: MAY '17	Scale: 1:250	Sheet Size: A1
Project Number: DOBA1446	Drawing Number: LCC-DOB-XX-SI-DR-C-0004	Status Code: D2	Rev Number: P03		