

- LIST OF IRISH WATER STANDARD DETAILS BROUGHT INTO THE CONTRACT
- STD-W-04 GENERAL PIPE CONNECTIONS (SHEET 1 OF 7)
  - STD-W-05 GENERAL PIPE CONNECTIONS (SHEET 2 OF 7)
  - STD-W-06 GENERAL PIPE CONNECTIONS (SHEET 3 OF 7)
  - STD-W-07 GENERAL PIPE CONNECTIONS (SHEET 4 OF 7)
  - STD-W-08 GENERAL PIPE CONNECTIONS (SHEET 5 OF 7)
  - STD-W-09 GENERAL PIPE CONNECTIONS (SHEET 6 OF 7)
  - STD-W-10 GENERAL PIPE CONNECTIONS (SHEET 7 OF 7)
  - STD-W-11 TYPICAL SERVICE LAYOUT INDICATING SEPARATION DISTANCES
  - STD-W-12 RESTRICTIONS ON TREES / SHRUBS PLANTING ADJACENT TO WATERMANS
  - STD-W-13 FRENCH BACKFILL & BEDDING
  - STD-W-14 SLUICE VALVE FOR DUCTILE IRON (D.I.) PIPE (<350mm DIA.) (SHEET 1 OF 2)
  - STD-W-15 SLUICE VALVE FOR POLYETHYLENE (P.E.) PIPE (<350mm DIA.) (SHEET 2 OF 2)
  - STD-W-16 ON-LINE AIR VALVE FOR DUCTILE IRON (D.I.) PIPE (SHEET 1 OF 4)
  - STD-W-17 OFF-LINE AIR VALVE FOR DUCTILE IRON (D.I.) PIPE (SHEET 2 OF 4)
  - STD-W-18 ON-LINE HYDRANT FOR POLYETHYLENE (P.E.) PIPE (SHEET 3 OF 4)
  - STD-W-19 OFF-LINE HYDRANT FOR POLYETHYLENE (P.E.) PIPE (SHEET 4 OF 4)
  - STD-W-20 ON-LINE AIR VALVE FOR DUCTILE IRON (D.I.) PIPE (SHEET 1 OF 4)
  - STD-W-21 OFF-LINE AIR VALVE FOR DUCTILE IRON (D.I.) PIPE (SHEET 2 OF 4)
  - STD-W-22 ON-LINE AIR VALVE FOR POLYETHYLENE (P.E.) PIPE (SHEET 3 OF 4)
  - STD-W-23 OFF-LINE AIR VALVE FOR POLYETHYLENE (P.E.) PIPE (SHEET 4 OF 4)
  - STD-W-24 PRESSURE REDUCING / SUSTAINING VALVE (P.R.V./P.S.V.) CHAMBER
  - STD-W-26 METER CHAMBER (S.350mm DIA.)
  - STD-W-27 MARKER POSTS / PLATES
  - STD-W-28 WATER MAIN TRUNK / SUPPORT BLOCKS
  - STD-W-30 SCOUR CHAMBER & HEAD WALL ARRANGEMENTS
  - STD-W-30A WASHOUT HYDRANT
  - STD-W-31 TYPICAL TRENCH / STREAM CROSSING FOR WATER MAIN

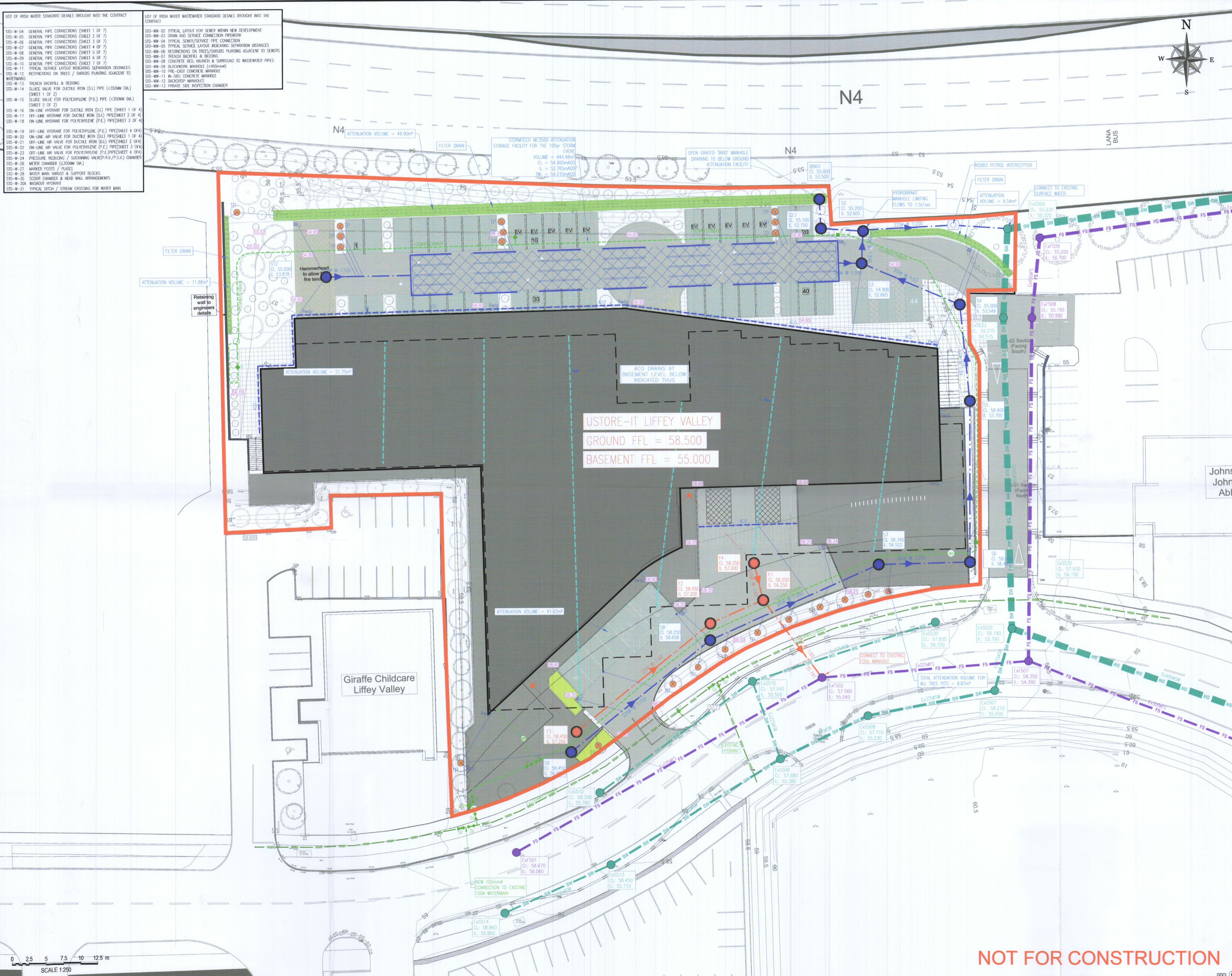
- LIST OF IRISH WATER WASTEWATER STANDARD DETAILS BROUGHT INTO THE CONTRACT
- STD-WW-02 TYPICAL LAYOUT FOR SEWER WITHIN NEW DEVELOPMENT
  - STD-WW-03 DRAIN AND SERVICE CONNECTION PIPEWORK
  - STD-WW-04 TYPICAL SEWER/SERVICE PIPE CONNECTION
  - STD-WW-05 TYPICAL SERVICE LAYOUT INDICATING SEPARATION DISTANCES
  - STD-WW-06 RESTRICTIONS ON TREES/SHRUBS PLANTING ADJACENT TO SEWERS
  - STD-WW-07 FRENCH BACKFILL & BEDDING
  - STD-WW-08 CONCRETE BELMOUND & SURROUND TO WASTEWATER PIPES
  - STD-WW-09 BLOCKWORK MANHOLE (<450mm)
  - STD-WW-10 PRE-CAST CONCRETE MANHOLE
  - STD-WW-11 IN-SITU CONCRETE MANHOLE
  - STD-WW-12 BACKDROP MANHOLES
  - STD-WW-13 PRIVATE SITE INSPECTION CHAMBER

NOTES

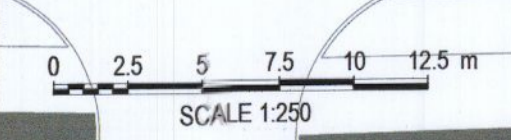
- ALL DRAWINGS TO BE CHECKED BY CONTRACTOR ON SITE AND ENGINEER INFORMED OF DISCREPANCIES BEFORE WORK COMMENCES
- ALL LEVELS ARE IN METRES AND ARE RELATED TO ORDNANCE DATUM
- ALL DIMENSIONS TO BE IN MILLIMETERS UNLESS NOTED OTHERWISE
- CONTRACTOR SHALL SATISFY HIMSELF AS TO THE ACCURACY OF PAVEMENT LEVELS ON SITE PRIOR TO COMMENCEMENT OF WORKS ON SITE
- ALL SURFACE WATER DRAINAGE WORKS TO BE IN ACCORDANCE WITH THE REQUIREMENTS OF THE LOCAL AUTHORITY'S CODE OF PRACTICE FOR DRAINAGE AND THE GEOSD
- ALL SURFACE WATER SEWERS TO BE CLASS H CONCRETE TO EN1916 & IS 6 2004.
- ALL FOUL DRAINAGE WORKS TO BE IN ACCORDANCE WITH IRISH WATER'S CODE OF PRACTICE FOR WASTEWATER SUPPLY AND WASTEWATER INFRASTRUCTURE STANDARD DETAILS.
- FOUL SEWERS TO BE THERMOPLASTIC STRUCTURED WALL PIPES (COMPLYING WITH THE PROVISIONS OF IS EN 13476 AND WS 4-35-01 2000) AND COMPLY WITH THE REQUIREMENTS OF THE IRISH WATER CODE OF PRACTICE
- WATERMAIN INSTALLATION AND ALL WATER SUPPLY WORKS TO BE IN ACCORDANCE WITH THE REQUIREMENTS OF IRISH WATER'S CODE OF PRACTICE FOR WATER SUPPLY AND WATER INFRASTRUCTURE STANDARD DETAILS
- WATERMANS TO BE TYPE HPPE, PE-100, SDR-17 RATED AND SHALL CONFORM TO IS EN 12201 (PART 1, PART 2 & PART 3).
- WATERMAIN SERVICE CONNECTION PIPES TO BE HDPE (PE-80) MATERIAL WITH SDR-17 RATING
- ANCHOR BLOCKS TO BE POSITIONED AT DEAD ENDS, TEES, BENDS AND AT EACH SIDE OF HYDRANTS AND VALVES IN ACCORDANCE WITH THE REQUIREMENTS OF IRISH WATER STANDARD DETAIL STD-W-28 (WATER MAIN THRUST AND SUPPORT BLOCKS)
- HYDRANT OUTLET TO BE 200mm BELOW GROUND LEVEL UNLESS REQUESTED OTHERWISE.
- WHERE COVER TO PIPE IS LESS THAN 900mm IN GREEN AREAS AND 1200mm IN TRAFFICED AREAS, ENCASE PIPE IN NEW 150mm CONCRETE WITH MOVEMENT JOINTS.

LEGEND

- Proposed Foul Manhole
- Proposed Foul Sewer
- Proposed Foul Downpipe with Roofing Eye
- Proposed Foul Collector Drain
- Proposed Surface Water Manhole
- Proposed Surface Water Sewer
- Proposed Surface Water Downpipe with Roofing Eye
- Proposed Linear Surface Drain (ACO OSA)
- Proposed Linear Surface Drain at Basement Slab Level (ACO OSA)
- Proposed HPPE (PE100 SDR 17) Watermain
- Sluice Valves as per Irish Water Standard Detail STD-W-14/15
- Air Valves as per Irish Water Standard Detail STD-W-16/18
- Pressure Reducing / Sustaining Valve (P.R.V./P.S.V.) Chamber
- Proposed Boundary Box and HDPE Service Connection (PE80 SDR 17)
- Meter Chamber as per Irish Water Standard STD-W-26
- Existing Spot/Road Level
- Proposed Road/Spot Level
- Existing Foul Sewer
- Existing Surface Water Sewer
- Existing Watermain
- Site Boundary
- Proposed Building
- Proposed Footpath
- Proposed Roadway
- Proposed Attenuation Facility
- Proposed Permeable Paving
- Extent of Basement



UStore-IT Liffey Valley  
 GROUND FFL = 58.500  
 BASEMENT FFL = 55.000



NOT FOR CONSTRUCTION

Rev	Date	Description	SM	SJ	By	Chk
P	28/10/22	PLANNING SUBMISSION				

PLANNING

**gdcl**  
CONSULTING ENGINEERS

Scope House, 75 Shelton Street, Perrystown, Dublin D12 K8PP  
 www.gdclconsulting.com

75 Shelton Street, Covent Garden, London WC2E 8JQ

PROJECT	U-Store-It, Liffey Valley		
CLIENT	Oceanglade Ltd		
DRAWING TITLE	Combined Underground Services (Civil)		
dm. by: SM	date: Oct 22	scale: 1:250	
drawing size: A1	chk: SJ	app: GD	
job no: P2005	drg. no: P2005-C-301	rev: p	