

C.0 Scheme Performance Results

C.1 Sun On Ground (SOG) in Proposed Outdoor Amenity Areas

Below is an example of the table used to describe SOG in proposed gardens and amenity spaces.

Table Example. C.1 - Scheme Performance SOG				
Assessed Area	Area Capable of Receiving 2 Hours of Sunlight on March 21st	Recommended Minimum	Level of Compliance with BRE Guidelines	Meets BRE 209 Criteria
A	B	C	D	E

A: Assessed Area

This column identifies the assessed garden/amenity area.

B: Area Capable of Receiving 2 Hours of Sunlight on March 21st

The percentage of the proposed area that can receive more than 2 hours of sunlight on March 21st.

C: Recommended Minimum

The BRE Guidelines state that the percentage of a garden/amenity area that can receive more than 2 hours of sunlight on March 21st should be 50%. The target value for all spaces is set to 50%.

D: Level of Compliance with BRE Guidelines

This column states the compliance of the assessed space with the *BRE Target Value*. If the assessed garden or amenity area complies with the BRE Guidelines this cell will state "*BRE Compliant*". If the garden or amenity area does not meet the criteria as set out in the BRE Guidelines, a percentage of compliance with the *recommended minimum* will be stated.

E: Meets BRE 209 Criteria

This column states if the assessed room achieves the recommended level of sunlight on March 21st as per BRE 209.

It should be noted that the figures displayed in the table of results have been rounded off. A manual calculation on these figures may yield a negligible difference and should not be considered an error.

C.1.1 Sun On Ground in Proposed Outdoor Amenity Areas

Table No. C.1.1 - SOG in Proposed Outdoor Amenity Areas Results:				
Assessed Area	Area Capable of Receiving 2 Hours of Sunlight on March 21st	Recommended minimum	Level of Compliance with BRE Guidelines*	Meets BRE 209 Criteria*
Proposed Public Open Area	66.0%	50.0%	BRE Compliant	Yes
Private Garden 1	29.7%	50.0%	59.5%	No
Private Garden 2	26.0%	50.0%	52.0%	No

* The BRE Guidelines recommend that for a garden or amenity to appear adequately sunlit throughout the year, at least half of a garden or amenity area should receive at least two hours of sunlight on March 21st.
 ** Average values have been calculated by considering all the relevant areas as a singular area and calculating what portion of the spaces as a whole can receive at least two hours of sunlight on March 21st.

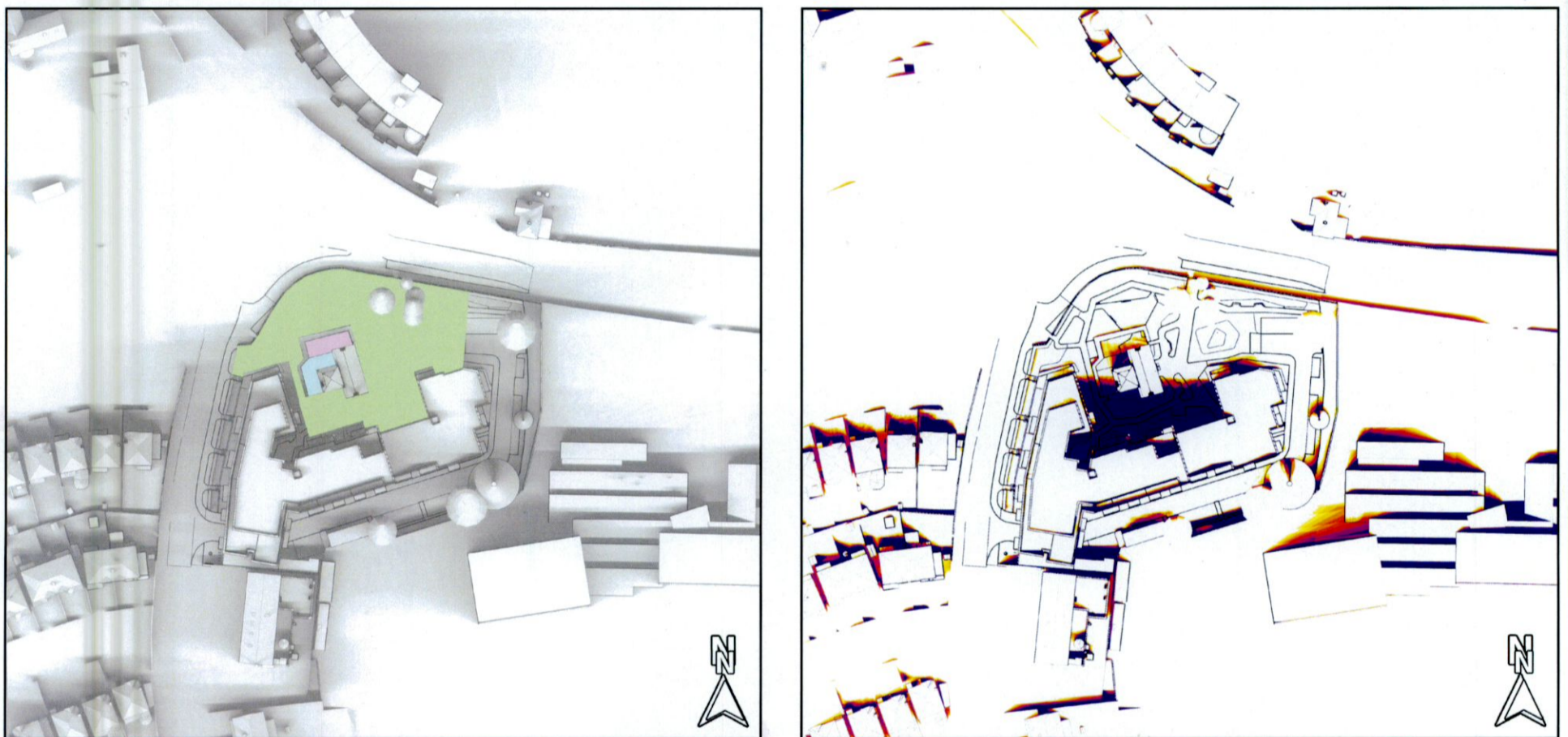


Figure C.1: Amenity area that have been analysed (L), Area capable of receiving 2 hours of sunlight on March 21st shown in white (R)

C.2 Sunlight Exposure (SE) in Proposed Units

Below is an example of the table used to describe the SE performance of proposed habitable rooms.

Table Example. C.2 - Scheme Performance Sunlight Exposure							
Unit Number	Room Description	Deciduous Trees as Opaque Objects			Without Deciduous Trees		
		SE Hours on March 21st	Level of SE on March 21st	Unit compliance based on highest performing room	SE Hours on March 21st	Level of SE on March 21st	Unit compliance based on highest performing room
A	B	C	D	E	F	G	H

A: Unit Number

This column identifies the assessed unit. All unit numbers are determined by the architect's drawings, unless otherwise stated.

B: Room Description

Room Description details which room of the unit has been assessed, e.g. bedroom, living room, etc.

C: SE Hours on March 21st (Deciduous Trees as Opaque Objects)

This column will state the number of hours the assessed room can expect to receive on March 21st with the assessment carried out with deciduous trees as opaque objects.

D: Level of SE on March 21st (Deciduous Trees as Opaque Objects)

BRE 209 recommends a minimum sunlight exposure of 1.5 hours for a proposed unit with preference given to main living rooms. BRE 209 categorise sunlight exposure as minimum, medium and high, this column will categorise the level of sunlight exposure with deciduous trees as opaque objects based on the following:

- Less than 1.5 hours: *Non-compliant*,
- Between 1.5 hours and 3 hours: *Minimum*
- Between 3 hours and 4 hours: *Medium*

E: Unit compliance based on highest performing room (Deciduous Trees as Opaque Objects)

A proposed unit is considered to be compliant provided any habitable room within the unit is capable of receiving at least 1.5 hours of sunlight on March 21st. This column will identify the highest performing room within a unit and state compliance for the associated unit based on that room with the assessment carried out with deciduous trees as opaque objects. Typically only one room per unit will be populated in this column, with lesser performing rooms indicated with a dash (-). However, if more than one room in a given unit is considered to be the best performing room, i.e. they have the same number of SE hours on March 21st, then the unit compliance column will be populated for each.

F: SE Hours on March 21st (Without Deciduous Trees)

This column will state the number of hours the assessed room can expect to receive on March 21st with the assessment carried out without deciduous trees.

G: Level of SE on March 21st (Without Deciduous Trees)

BRE 209 recommends a minimum sunlight exposure of 1.5 hours for a proposed unit with preference given to main living rooms. BRE 209 categorise sunlight exposure as minimum, medium and high, this column will categorise the level of sunlight exposure without deciduous trees using the same criteria as the study with deciduous trees as opaque objects.

H: Unit compliance based on highest performing room (Without Deciduous Trees)

A proposed unit is considered to be compliant provided any habitable room within the unit is capable of receiving at least 1.5 hours of sunlight on March 21st. This column will identify the highest performing room within a unit and state compliance for the associated unit based on that room with the assessment carried out without deciduous trees. Typically only one room per unit will be populated in this column, with lesser performing rooms indicated with a dash (-). However, if more than one room in a given unit is considered to be the best performing room, i.e. they have the same number of SE hours on March 21st, then the unit compliance column will be populated for each.

It should be noted that the figures displayed in the table of results have been rounded off. A manual calculation on these figures may yield a negligible difference and should not be considered an error.

C.2.1 Proposed Block/Ground Floor

Table No. C.2.1 - Sunlight Exposure Results: Proposed Block/Ground Floor							
Unit Number	Room Description	Deciduous Trees as Opaque Objects*			Without Deciduous Trees*		
		SE Hours on March 21st	Level of SE on March 21st***	Unit compliance based on highest performing room**	SE Hours on March 21st	Level of SE on March 21st***	Unit compliance based on highest performing room**
0001	Bedroom 1	2.50	Minimum	-	3.40	Medium	-
0001	Bedroom 2	1.30	Non-Compliant	-	2.50	Minimum	-
0001	Kit/Liv/Din	2.80	Minimum	Compliant	3.70	Medium	Compliant
0002	Bedroom 1	2.50	Minimum	-	3.10	Medium	-
0002	Bedroom 2	0.10	Non-Compliant	-	2.20	Minimum	-
0002	Kit/Liv/Din	3.50	Medium	Compliant	3.50	Medium	Compliant
0003	Bedroom 1	0.10	Non-Compliant	-	3.10	Medium	-
0003	Bedroom 2	0.00	Non-Compliant	-	2.00	Minimum	-
0003	Kit/Liv/Din	0.20	Non-Compliant	Non-Compliant	3.30	Medium	Compliant
0004	Bedroom 1	0.00	Non-Compliant	-	3.30	Medium	-
0004	Bedroom 2	0.50	Non-Compliant	-	3.20	Medium	-
0004	Bedroom 3	0.00	Non-Compliant	-	0.00	Non-Compliant	-
0004	Kit/Liv/Din	2.00	Minimum	Compliant	4.90	High	Compliant
0005	Bedroom	0.00	Non-Compliant	Non-Compliant	0.00	Non-Compliant	Non-Compliant
0005	Kit/Liv/Din	0.00	Non-Compliant	Non-Compliant	0.00	Non-Compliant	Non-Compliant

* Rooms are tested with deciduous trees as opaque objects and without deciduous trees to account for the range of possible sunlight hours.
 ** The BRE Guidelines recommend that for a unit to be compliant any room within the unit should receive a minimum of 1.5 hours of direct sunlight on March 21st, preferably a main living room. The SE circa compliance rates across the entire scheme can be found in section 6.2.2 on page 20 of the corresponding report.
 *** For the interpretation of levels of Sunlight Exposure please refer to "3.3 Definition of Levels of Sunlight Exposure" on page 11 of the corresponding report.



Figure C.2: Floor plan of assessed building (L), Keyplan highlighting the assessed building (R).

C.2.2 Proposed Block/Ground Floor

Table No. C.2.2 - Sunlight Exposure Results: Proposed Block/Ground Floor

Unit Number	Room Description	Deciduous Trees as Opaque Objects*			Without Deciduous Trees*		
		SE Hours on March 21st	Level of SE on March 21st***	Unit compliance based on highest performing room**	SE Hours on March 21st	Level of SE on March 21st***	Unit compliance based on highest performing room**
0006	Bedroom 1	0.00	Non-Compliant	Non-Compliant	0.00	Non-Compliant	Non-Compliant
0006	Bedroom 2	0.00	Non-Compliant	Non-Compliant	0.00	Non-Compliant	Non-Compliant
0006	Kit/Liv/Din	0.00	Non-Compliant	Non-Compliant	0.00	Non-Compliant	Non-Compliant
0007	Bedroom 1	0.00	Non-Compliant	Non-Compliant	0.00	Non-Compliant	Non-Compliant
0007	Bedroom 2	0.00	Non-Compliant	Non-Compliant	0.00	Non-Compliant	Non-Compliant
0007	Kit/Liv/Din	0.00	Non-Compliant	Non-Compliant	0.00	Non-Compliant	Non-Compliant
0008	Bedroom 1	0.00	Non-Compliant	-	0.00	Non-Compliant	-
0008	Bedroom 2	0.00	Non-Compliant	-	0.00	Non-Compliant	-
0008	Kit/Liv/Din	4.00	High	Compliant	4.00	High	Compliant
0009	Bedroom 1	0.00	Non-Compliant	-	0.00	Non-Compliant	-
0009	Bedroom 2	0.00	Non-Compliant	-	0.00	Non-Compliant	-
0009	Kit/Liv/Din	4.60	High	Compliant	4.60	High	Compliant
0010	Bedroom 1	0.00	Non-Compliant	-	0.00	Non-Compliant	-
0010	Bedroom 2	0.00	Non-Compliant	-	0.00	Non-Compliant	-
0010	Kit/Liv/Din	0.30	Non-Compliant	Non-Compliant	0.30	Non-Compliant	Non-Compliant
0011	Bedroom 1	0.00	Non-Compliant	-	0.00	Non-Compliant	-
0011	Bedroom 2	0.70	Non-Compliant	Non-Compliant	2.30	Minimum	-
0011	Bedroom 3	0.30	Non-Compliant	-	2.70	Minimum	Compliant
0011	Kit/Liv/Din	0.00	Non-Compliant	-	2.00	Minimum	-

* Rooms are tested with deciduous trees as opaque objects and without deciduous trees to account for the range of possible sunlight hours.
 ** The BRE Guidelines recommend that for a unit to be compliant any room within the unit should receive a minimum of 1.5 hours of direct sunlight on March 21st, preferably a main living room. The SE circa compliance rates across the entire scheme can be found in section 6.2.2 on page 20 of the corresponding report.
 *** For the interpretation of levels of Sunlight Exposure please refer to "3.3 Definition of Levels of Sunlight Exposure" on page 11 of the corresponding report.

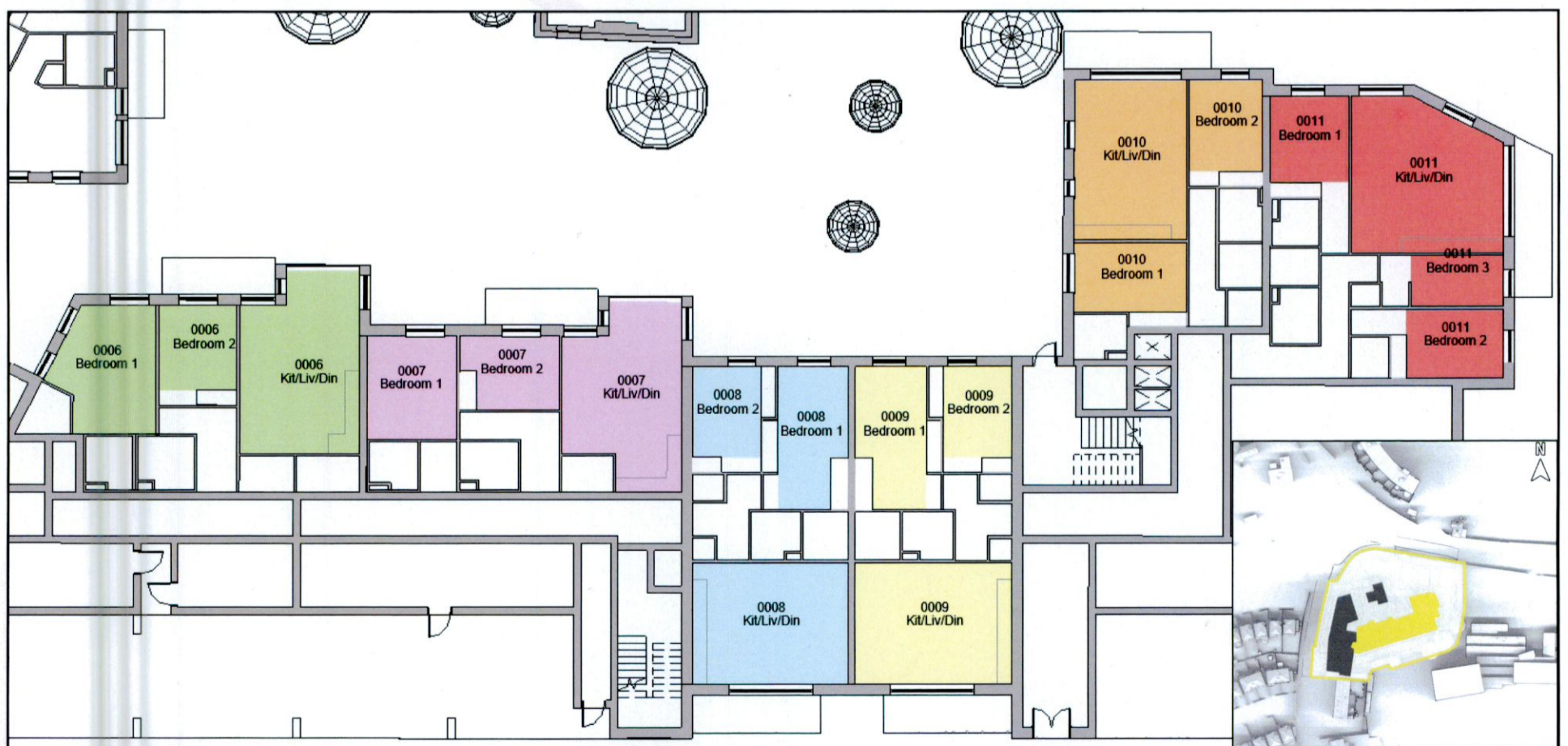


Figure C.3: Floor plan of assessed building (L), Keyplan highlighting the assessed building (R).

C.2.3 Proposed Block/First Floor

Table No. C.2.3 - Sunlight Exposure Results: Proposed Block/First Floor

Unit Number	Room Description	Deciduous Trees as Opaque Objects*			Without Deciduous Trees*		
		SE Hours on March 21st	Level of SE on March 21st***	Unit compliance based on highest performing room**	SE Hours on March 21st	Level of SE on March 21st***	Unit compliance based on highest performing room**
0105	Bedroom 1	2.30	Minimum	Compliant	2.30	Minimum	-
0105	Bedroom 2	2.30	Minimum	Compliant	2.30	Minimum	-
0105	Kit/Liv/Din	2.00	Minimum	-	2.50	Minimum	Compliant
0106	Bedroom 1	3.10	Medium	Compliant	3.10	Medium	-
0106	Bedroom 2	0.00	Non-Compliant	-	2.00	Minimum	-
0106	Kit/Liv/Din	2.00	Minimum	-	3.50	Medium	Compliant
0107	Bedroom 1	0.30	Non-Compliant	-	3.00	Medium	-
0107	Bedroom 2	0.00	Non-Compliant	-	1.90	Minimum	-
0107	Kit/Liv/Din	1.30	Non-Compliant	Non-Compliant	3.50	Medium	Compliant
0108	Bedroom 1	0.70	Non-Compliant	-	3.10	Medium	-
0108	Bedroom 2	1.90	Minimum	-	3.10	Medium	-
0108	Bedroom 3	1.90	Minimum	-	2.10	Minimum	-
0108	Kit/Liv/Din	3.50	Medium	Compliant	5.80	High	Compliant
0109	Bedroom	0.00	Non-Compliant	Non-Compliant	0.00	Non-Compliant	Non-Compliant
0109	Kit/Liv/Din	0.00	Non-Compliant	Non-Compliant	0.00	Non-Compliant	Non-Compliant

* Rooms are tested with deciduous trees as opaque objects and without deciduous trees to account for the range of possible sunlight hours.
 ** The BRE Guidelines recommend that for a unit to be compliant any room within the unit should receive a minimum of 1.5 hours of direct sunlight on March 21st, preferably a main living room. The SE circa compliance rates across the entire scheme can be found in section 6.2.2 on page 20 of the corresponding report.
 *** For the interpretation of levels of Sunlight Exposure please refer to "3.3 Definition of Levels of Sunlight Exposure" on page 11 of the corresponding report.



Figure C.4: Floor plan of assessed building (L), Keyplan highlighting the assessed building (R).

C.2.4 Proposed Block/First Floor

Table No. C.2.4 - Sunlight Exposure Results: Proposed Block/First Floor

Unit Number	Room Description	Deciduous Trees as Opaque Objects*			Without Deciduous Trees*		
		SE Hours on March 21st	Level of SE on March 21st***	Unit compliance based on highest performing room**	SE Hours on March 21st	Level of SE on March 21st***	Unit compliance based on highest performing room**
0101	Bedroom	4.20	High	-	4.20	High	-
0101	Kit/Liv/Din	5.60	High	Compliant	5.60	High	Compliant
0102	Bedroom	4.00	High	-	4.00	High	-
0102	Kit/Liv/Din	5.20	High	Compliant	5.20	High	Compliant
0103	Bedroom	4.30	High	-	4.30	High	-
0103	Kit/Liv/Din	4.80	High	Compliant	4.80	High	Compliant
0104	Bedroom 1	5.70	High	Compliant	5.70	High	Compliant
0104	Bedroom 2	4.70	High	-	4.70	High	-
0104	Kit/Liv/Din	4.60	High	-	4.60	High	-
0110	Bedroom 1	0.00	Non-Compliant	Non-Compliant	0.00	Non-Compliant	Non-Compliant
0110	Bedroom 2	0.00	Non-Compliant	Non-Compliant	0.00	Non-Compliant	Non-Compliant
0110	Kit/Liv/Din	0.00	Non-Compliant	Non-Compliant	0.00	Non-Compliant	Non-Compliant
0111	Bedroom 1	0.00	Non-Compliant	Non-Compliant	0.00	Non-Compliant	Non-Compliant
0111	Bedroom 2	0.00	Non-Compliant	Non-Compliant	0.00	Non-Compliant	Non-Compliant
0111	Kit/Liv/Din	0.00	Non-Compliant	Non-Compliant	0.00	Non-Compliant	Non-Compliant

* Rooms are tested with deciduous trees as opaque objects and without deciduous trees to account for the range of possible sunlight hours.
 ** The BRE Guidelines recommend that for a unit to be compliant any room within the unit should receive a minimum of 1.5 hours of direct sunlight on March 21st, preferably a main living room. The SE circa compliance rates across the entire scheme can be found in section 6.2.2 on page 20 of the corresponding report.
 *** For the interpretation of levels of Sunlight Exposure please refer to "3.3 Definition of Levels of Sunlight Exposure" on page 11 of the corresponding report.



Figure C.5: Floor plan of assessed building (L), Keyplan highlighting the assessed building (R).

C.2.5 Proposed Block/First Floor

Table No. C.2.5 - Sunlight Exposure Results: Proposed Block/First Floor

Unit Number	Room Description	Deciduous Trees as Opaque Objects*			Without Deciduous Trees*		
		SE Hours on March 21st	Level of SE on March 21st***	Unit compliance based on highest performing room**	SE Hours on March 21st	Level of SE on March 21st***	Unit compliance based on highest performing room**
0112	Bedroom 1	0.00	Non-Compliant	-	0.00	Non-Compliant	-
0112	Bedroom 2	0.00	Non-Compliant	-	0.00	Non-Compliant	-
0112	Kit/Liv/Din	4.80	High	Compliant	4.80	High	Compliant
0113	Bedroom 1	0.00	Non-Compliant	-	0.00	Non-Compliant	-
0113	Bedroom 2	0.00	Non-Compliant	-	0.00	Non-Compliant	-
0113	Kit/Liv/Din	5.60	High	Compliant	5.60	High	Compliant
0114	Bedroom 1	0.00	Non-Compliant	-	0.00	Non-Compliant	-
0114	Bedroom 2	0.00	Non-Compliant	-	0.00	Non-Compliant	-
0114	Kit/Liv/Din	4.40	High	Compliant	4.40	High	Compliant
0115	Bedroom 1	0.00	Non-Compliant	-	0.00	Non-Compliant	-
0115	Bedroom 2	0.40	Non-Compliant	Non-Compliant	2.90	Minimum	Compliant
0115	Bedroom 3	0.10	Non-Compliant	-	2.70	Minimum	-
0115	Kit/Liv/Din	0.10	Non-Compliant	-	1.80	Minimum	-
0116	Bedroom	0.30	Non-Compliant	-	1.80	Minimum	-
0116	Kit/Liv/Din	3.50	Medium	Compliant	3.50	Medium	Compliant
0117	Bedroom	3.50	Medium	-	3.50	Medium	-
0117	Kit/Liv/Din	6.20	High	Compliant	6.20	High	Compliant
0118	Bedroom	5.80	High	Compliant	5.80	High	Compliant
0118	Kit/Liv/Din	5.70	High	-	5.70	High	-

* Rooms are tested with deciduous trees as opaque objects and without deciduous trees to account for the range of possible sunlight hours.
 ** The BRE Guidelines recommend that for a unit to be compliant any room within the unit should receive a minimum of 1.5 hours of direct sunlight on March 21st, preferably a main living room. The SE circa compliance rates across the entire scheme can be found in section 6.2.2 on page 20 of the corresponding report.
 *** For the interpretation of levels of Sunlight Exposure please refer to "3.3 Definition of Levels of Sunlight Exposure" on page 11 of the corresponding report.



Figure C.6: Floor plan of assessed building (R), Keyplan highlighting the assessed building (L).

C.2.6 Proposed Block/Second Floor

Table No. C.2.6 - Sunlight Exposure Results: Proposed Block/Second Floor

Unit Number	Room Description	Deciduous Trees as Opaque Objects*			Without Deciduous Trees*		
		SE Hours on March 21st	Level of SE on March 21st***	Unit compliance based on highest performing room**	SE Hours on March 21st	Level of SE on March 21st***	Unit compliance based on highest performing room**
0205	Bedroom	2.70	Minimum	-	2.70	Minimum	-
0205	Kit/Liv/Din	3.20	Medium	Compliant	3.20	Medium	Compliant
0206	Bedroom 1	4.40	High	-	4.40	High	-
0206	Bedroom 2	9.40	High	Compliant	9.40	High	Compliant
0206	Kit/Liv/Din	2.80	Minimum	-	2.80	Minimum	-
0207	Bedroom	2.30	Minimum	-	2.30	Minimum	-
0207	Kit/Liv/Din	8.40	High	Compliant	8.40	High	Compliant
0208	Bedroom	2.30	Minimum	-	2.30	Minimum	-
0208	Kit/Liv/Din	4.10	High	Compliant	4.10	High	Compliant
0209	Bedroom	2.30	Minimum	Compliant	2.30	Minimum	Compliant
0209	Kit/Liv/Din	0.00	Non-Compliant	-	0.00	Non-Compliant	-
0210	Bedroom 1	3.10	Medium	Compliant	3.10	Medium	-
0210	Bedroom 2	0.10	Non-Compliant	-	1.90	Minimum	-
0210	Kit/Liv/Din	2.50	Minimum	-	3.70	Medium	Compliant
0211	Bedroom 1	2.70	Minimum	Compliant	3.20	Medium	-
0211	Bedroom 2	0.20	Non-Compliant	-	1.90	Minimum	-
0211	Kit/Liv/Din	1.90	Minimum	-	3.70	Medium	Compliant
0212	Bedroom 1	2.80	Minimum	-	3.10	Medium	-
0212	Bedroom 2	2.00	Minimum	-	3.10	Medium	-
0212	Bedroom 3	2.90	Minimum	-	2.90	Minimum	-
0212	Kit/Liv/Din	4.10	High	Compliant	5.80	High	Compliant
0213	Bedroom	1.40	Non-Compliant	Non-Compliant	1.40	Non-Compliant	Non-Compliant
0213	Kit/Liv/Din	0.00	Non-Compliant	-	0.00	Non-Compliant	-

* Rooms are tested with deciduous trees as opaque objects and without deciduous trees to account for the range of possible sunlight hours.
 ** The BRE Guidelines recommend that for a unit to be compliant any room within the unit should receive a minimum of 1.5 hours of direct sunlight on March 21st, preferably a main living room. The SE circa compliance rates across the entire scheme can be found in section 6.2.2 on page 20 of the corresponding report.
 *** For the interpretation of levels of Sunlight Exposure please refer to "3.3 Definition of Levels of Sunlight Exposure" on page 11 of the corresponding report.



Figure C.7: Floor plan of assessed building (R), Keyplan highlighting the assessed building (L).

C.2.7 Proposed Block/Second Floor

Unit Number	Room Description	Deciduous Trees as Opaque Objects*			Without Deciduous Trees*		
		SE Hours on March 21st	Level of SE on March 21st***	Unit compliance based on highest performing room**	SE Hours on March 21st	Level of SE on March 21st***	Unit compliance based on highest performing room**
0201	Bedroom	6.00	High	-	6.00	High	-
0201	Kit/Liv/Din	7.40	High	Compliant	7.40	High	Compliant
0202	Bedroom	4.90	High	-	4.90	High	-
0202	Kit/Liv/Din	6.60	High	Compliant	6.60	High	Compliant
0203	Bedroom	4.70	High	-	4.70	High	-
0203	Kit/Liv/Din	5.70	High	Compliant	5.70	High	Compliant
0204	Bedroom 1	6.30	High	Compliant	6.30	High	Compliant
0204	Bedroom 2	4.80	High	-	4.80	High	-
0204	Kit/Liv/Din	4.90	High	-	4.90	High	-
0214	Bedroom 1	0.00	Non-Compliant	Non-Compliant	0.00	Non-Compliant	Non-Compliant
0214	Bedroom 2	0.00	Non-Compliant	Non-Compliant	0.00	Non-Compliant	Non-Compliant
0214	Kit/Liv/Din	0.00	Non-Compliant	Non-Compliant	0.00	Non-Compliant	Non-Compliant
0215	Bedroom 1	0.00	Non-Compliant	Non-Compliant	0.00	Non-Compliant	Non-Compliant
0215	Bedroom 2	0.00	Non-Compliant	Non-Compliant	0.00	Non-Compliant	Non-Compliant
0215	Kit/Liv/Din	0.00	Non-Compliant	Non-Compliant	0.00	Non-Compliant	Non-Compliant

* Rooms are tested with deciduous trees as opaque objects and without deciduous trees to account for the range of possible sunlight hours.
 ** The BRE Guidelines recommend that for a unit to be compliant any room within the unit should receive a minimum of 1.5 hours of direct sunlight on March 21st, preferably a main living room. The SE circa compliance rates across the entire scheme can be found in section 6.2.2 on page 20 of the corresponding report.
 *** For the interpretation of levels of Sunlight Exposure please refer to "3.3 Definition of Levels of Sunlight Exposure" on page 11 of the corresponding report.



Figure C.8: Floor plan of assessed building (L), Keyplan highlighting the assessed building (R).

C.2.8 Proposed Block/Second Floor

Table No. C.2.8 - Sunlight Exposure Results: Proposed Block/Second Floor

Unit Number	Room Description	Deciduous Trees as Opaque Objects*			Without Deciduous Trees*		
		SE Hours on March 21st	Level of SE on March 21st***	Unit compliance based on highest performing room**	SE Hours on March 21st	Level of SE on March 21st***	Unit compliance based on highest performing room**
0216	Bedroom 1	0.00	Non-Compliant	-	0.00	Non-Compliant	-
0216	Bedroom 2	0.00	Non-Compliant	-	0.00	Non-Compliant	-
0216	Kit/Liv/Din	7.10	High	Compliant	7.10	High	Compliant
0217	Bedroom 1	0.00	Non-Compliant	-	0.00	Non-Compliant	-
0217	Bedroom 2	0.00	Non-Compliant	-	0.00	Non-Compliant	-
0217	Kit/Liv/Din	7.80	High	Compliant	7.80	High	Compliant
0218	Bedroom 1	4.30	High	-	4.30	High	-
0218	Bedroom 2	0.00	Non-Compliant	-	0.00	Non-Compliant	-
0218	Kit/Liv/Din	4.60	High	Compliant	4.60	High	Compliant
0219	Bedroom 1	0.00	Non-Compliant	-	0.00	Non-Compliant	-
0219	Bedroom 2	0.70	Non-Compliant	-	2.90	Minimum	-
0219	Bedroom 3	0.50	Non-Compliant	-	2.70	Minimum	-
0219	Kit/Liv/Din	2.30	Minimum	Compliant	3.40	Medium	Compliant
0220	Bedroom	1.50	Minimum	-	2.90	Minimum	-
0220	Kit/Liv/Din	4.40	High	Compliant	4.70	High	Compliant
0221	Bedroom	5.10	High	-	5.10	High	-
0221	Kit/Liv/Din	7.00	High	Compliant	7.00	High	Compliant
0222	Bedroom	6.90	High	Compliant	6.90	High	Compliant
0222	Kit/Liv/Din	6.90	High	Compliant	6.90	High	Compliant

* Rooms are tested with deciduous trees as opaque objects and without deciduous trees to account for the range of possible sunlight hours.
 ** The BRE Guidelines recommend that for a unit to be compliant any room within the unit should receive a minimum of 1.5 hours of direct sunlight on March 21st, preferably a main living room. The SE circa compliance rates across the entire scheme can be found in section 6.2.2 on page 20 of the corresponding report.
 *** For the interpretation of levels of Sunlight Exposure please refer to "3.3 Definition of Levels of Sunlight Exposure" on page 11 of the corresponding report.

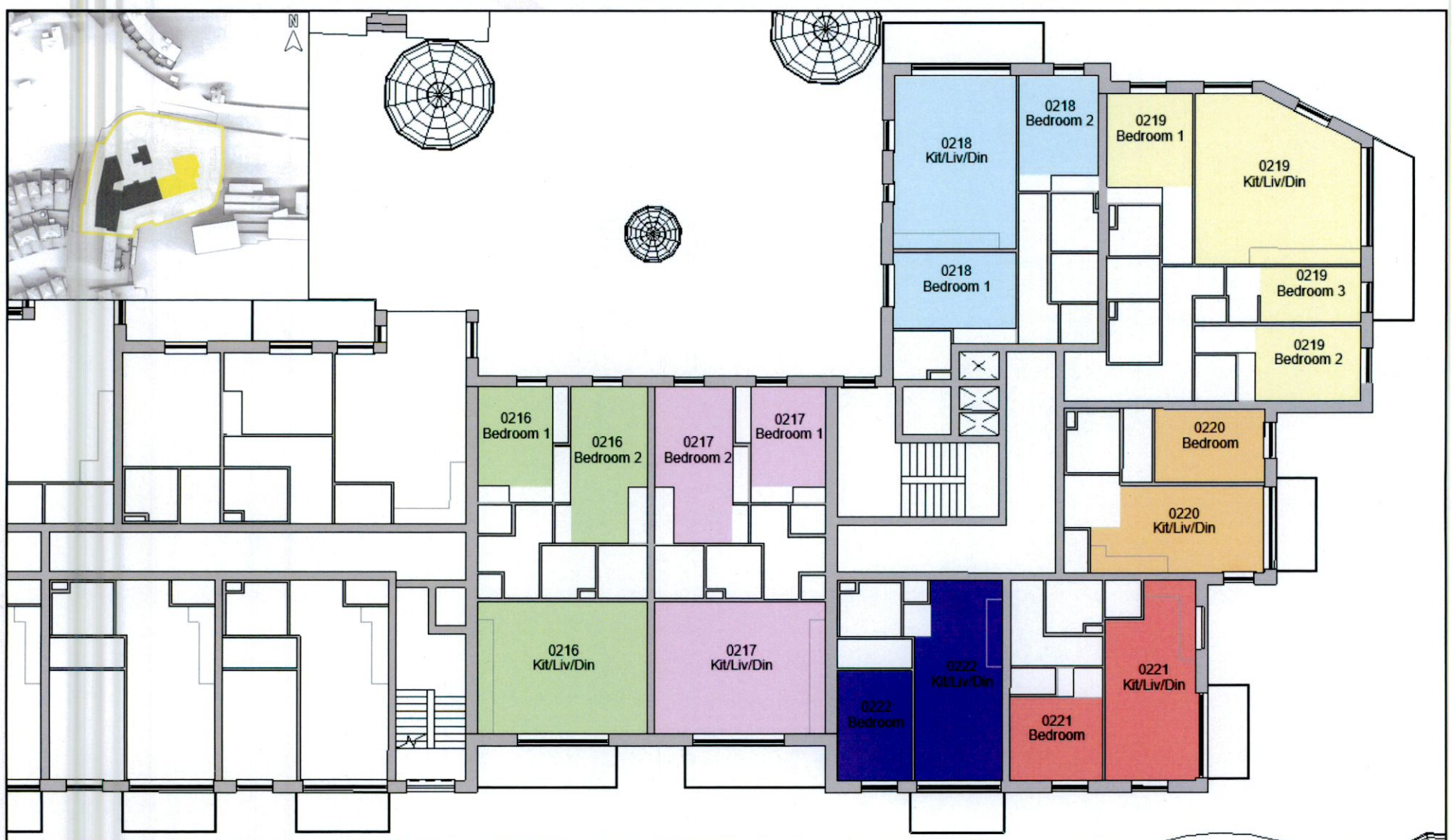


Figure C.9: Floor plan of assessed building (L), Keyplan highlighting the assessed building (R).

C.2.9 Proposed Block/Third Floor

Table No. C.2.9 - Sunlight Exposure Results: Proposed Block/Third Floor

Unit Number	Room Description	Deciduous Trees as Opaque Objects*			Without Deciduous Trees*		
		SE Hours on March 21st	Level of SE on March 21st***	Unit compliance based on highest performing room**	SE Hours on March 21st	Level of SE on March 21st***	Unit compliance based on highest performing room**
0305	Bedroom	4.30	High	-	4.30	High	-
0305	Kit/Liv/Din	4.80	High	Compliant	4.80	High	Compliant
0306	Bedroom 1	4.40	High	-	4.40	High	-
0306	Bedroom 2	9.40	High	Compliant	9.40	High	Compliant
0306	Kit/Liv/Din	4.80	High	-	4.80	High	-
0307	Bedroom	3.60	Medium	-	3.60	Medium	-
0307	Kit/Liv/Din	8.40	High	Compliant	8.40	High	Compliant
0308	Bedroom	3.60	Medium	-	3.60	Medium	-
0308	Kit/Liv/Din	4.10	High	Compliant	4.10	High	Compliant
0309	Bedroom	3.70	Medium	-	3.70	Medium	-
0309	Kit/Liv/Din	4.10	High	Compliant	4.10	High	Compliant
0310	Bedroom 1	3.30	Medium	-	3.30	Medium	-
0310	Bedroom 2	3.40	Medium	-	3.40	Medium	-
0310	Kit/Liv/Din	3.70	Medium	Compliant	3.70	Medium	Compliant
0311	Bedroom 1	3.40	Medium	-	3.40	Medium	-
0311	Bedroom 2	3.30	Medium	-	3.30	Medium	-
0311	Kit/Liv/Din	3.70	Medium	Compliant	3.70	Medium	Compliant
0312	Bedroom 1	3.30	Medium	-	3.30	Medium	-
0312	Bedroom 2	3.10	Medium	-	3.10	Medium	-
0312	Bedroom 3	2.90	Minimum	-	2.90	Minimum	-
0312	Kit/Liv/Din	5.80	High	Compliant	5.80	High	Compliant
0313	Bedroom	3.10	Medium	-	3.10	Medium	-
0313	Kit/Liv/Din	4.40	High	Compliant	4.40	High	Compliant

* Rooms are tested with deciduous trees as opaque objects and without deciduous trees to account for the range of possible sunlight hours.
 ** The BRE Guidelines recommend that for a unit to be compliant any room within the unit should receive a minimum of 1.5 hours of direct sunlight on March 21st, preferably a main living room. The SE circa compliance rates across the entire scheme can be found in section 6.2.2 on page 20 of the corresponding report.
 *** For the interpretation of levels of Sunlight Exposure please refer to "3.3 Definition of Levels of Sunlight Exposure" on page 11 of the corresponding report.



Figure C.10: Floor plan of assessed building, Keyplan highlighting the assessed building (L).

C.2.10 Proposed Block/Third Floor

Unit Number	Room Description	Deciduous Trees as Opaque Objects*			Without Deciduous Trees*		
		SE Hours on March 21st	Level of SE on March 21st***	Unit compliance based on highest performing room**	SE Hours on March 21st	Level of SE on March 21st***	Unit compliance based on highest performing room**
0301	Bedroom	8.10	High	-	8.10	High	-
0301	Kit/Liv/Din	8.70	High	Compliant	8.70	High	Compliant
0302	Bedroom	8.10	High	-	8.10	High	-
0302	Kit/Liv/Din	8.70	High	Compliant	8.70	High	Compliant
0303	Bedroom	8.10	High	-	8.10	High	-
0303	Kit/Liv/Din	8.70	High	Compliant	8.70	High	Compliant
0304	Bedroom 1	7.30	High	-	7.30	High	-
0304	Bedroom 2	5.90	High	-	5.90	High	-
0304	Kit/Liv/Din	7.90	High	Compliant	7.90	High	Compliant
0314	Bedroom 1	0.00	Non-Compliant	Non-Compliant	0.00	Non-Compliant	Non-Compliant
0314	Bedroom 2	0.00	Non-Compliant	Non-Compliant	0.00	Non-Compliant	Non-Compliant
0314	Kit/Liv/Din	0.00	Non-Compliant	Non-Compliant	0.00	Non-Compliant	Non-Compliant
0315	Bedroom 1	0.00	Non-Compliant	-	0.00	Non-Compliant	-
0315	Bedroom 2	0.00	Non-Compliant	-	0.00	Non-Compliant	-
0315	Kit/Liv/Din	2.90	Minimum	Compliant	2.90	Minimum	Compliant

* Rooms are tested with deciduous trees as opaque objects and without deciduous trees to account for the range of possible sunlight hours.
 ** The BRE Guidelines recommend that for a unit to be compliant any room within the unit should receive a minimum of 1.5 hours of direct sunlight on March 21st, preferably a main living room. The SE circa compliance rates across the entire scheme can be found in section 6.2.2 on page 20 of the corresponding report.
 *** For the interpretation of levels of Sunlight Exposure please refer to "3.3 Definition of Levels of Sunlight Exposure" on page 11 of the corresponding report.



Figure C.11: Floor plan of assessed building (L), Keyplan highlighting the assessed building (R).

C.2.11 Proposed Block/Fourth Floor

Table No. C.2.11 - Sunlight Exposure Results: Proposed Block/Fourth Floor

Unit Number	Room Description	Deciduous Trees as Opaque Objects*			Without Deciduous Trees*		
		SE Hours on March 21st	Level of SE on March 21st***	Unit compliance based on highest performing room**	SE Hours on March 21st	Level of SE on March 21st***	Unit compliance based on highest performing room**
0401	Bedroom 1	0.00	Non-Compliant	Non-Compliant	0.00	Non-Compliant	Non-Compliant
0401	Bedroom 2	0.00	Non-Compliant	Non-Compliant	0.00	Non-Compliant	Non-Compliant
0401	Kit/Liv/Din	0.00	Non-Compliant	Non-Compliant	0.00	Non-Compliant	Non-Compliant
0402	Bedroom	8.00	High	-	8.00	High	-
0402	Kit/Liv/Din	8.70	High	Compliant	8.70	High	Compliant
0403	Bedroom	8.10	High	-	8.10	High	-
0403	Kit/Liv/Din	8.70	High	Compliant	8.70	High	Compliant
0404	Bedroom	6.70	High	-	6.70	High	-
0404	Kit/Liv/Din	8.70	High	Compliant	8.70	High	Compliant
0405	Bedroom	4.40	High	-	4.40	High	-
0405	Kit/Liv/Din	9.40	High	Compliant	9.40	High	Compliant
0406	Bedroom 1	3.70	Medium	-	3.70	Medium	-
0406	Bedroom 2	3.70	Medium	-	3.70	Medium	-
0406	Bedroom 3	3.40	Medium	-	3.40	Medium	-
0406	Kit/Liv/Din	9.30	High	Compliant	9.30	High	Compliant
0407	Bedroom	3.30	Medium	-	3.30	Medium	-
0407	Kit/Liv/Din	3.70	Medium	Compliant	3.70	Medium	Compliant
0408	Bedroom 1	3.20	Medium	-	3.20	Medium	-
0408	Bedroom 2	3.30	Medium	-	3.30	Medium	-
0408	Bedroom 3	2.80	Minimum	-	2.80	Minimum	-
0408	Kit/Liv/Din	5.40	High	Compliant	5.40	High	Compliant

* Rooms are tested with deciduous trees as opaque objects and without deciduous trees to account for the range of possible sunlight hours.
 ** The BRE Guidelines recommend that for a unit to be compliant any room within the unit should receive a minimum of 1.5 hours of direct sunlight on March 21st, preferably a main living room. The SE circa compliance rates across the entire scheme can be found in section 6.2.2 on page 20 of the corresponding report.
 *** For the interpretation of levels of Sunlight Exposure please refer to "3.3 Definition of Levels of Sunlight Exposure" on page 11 of the corresponding report.

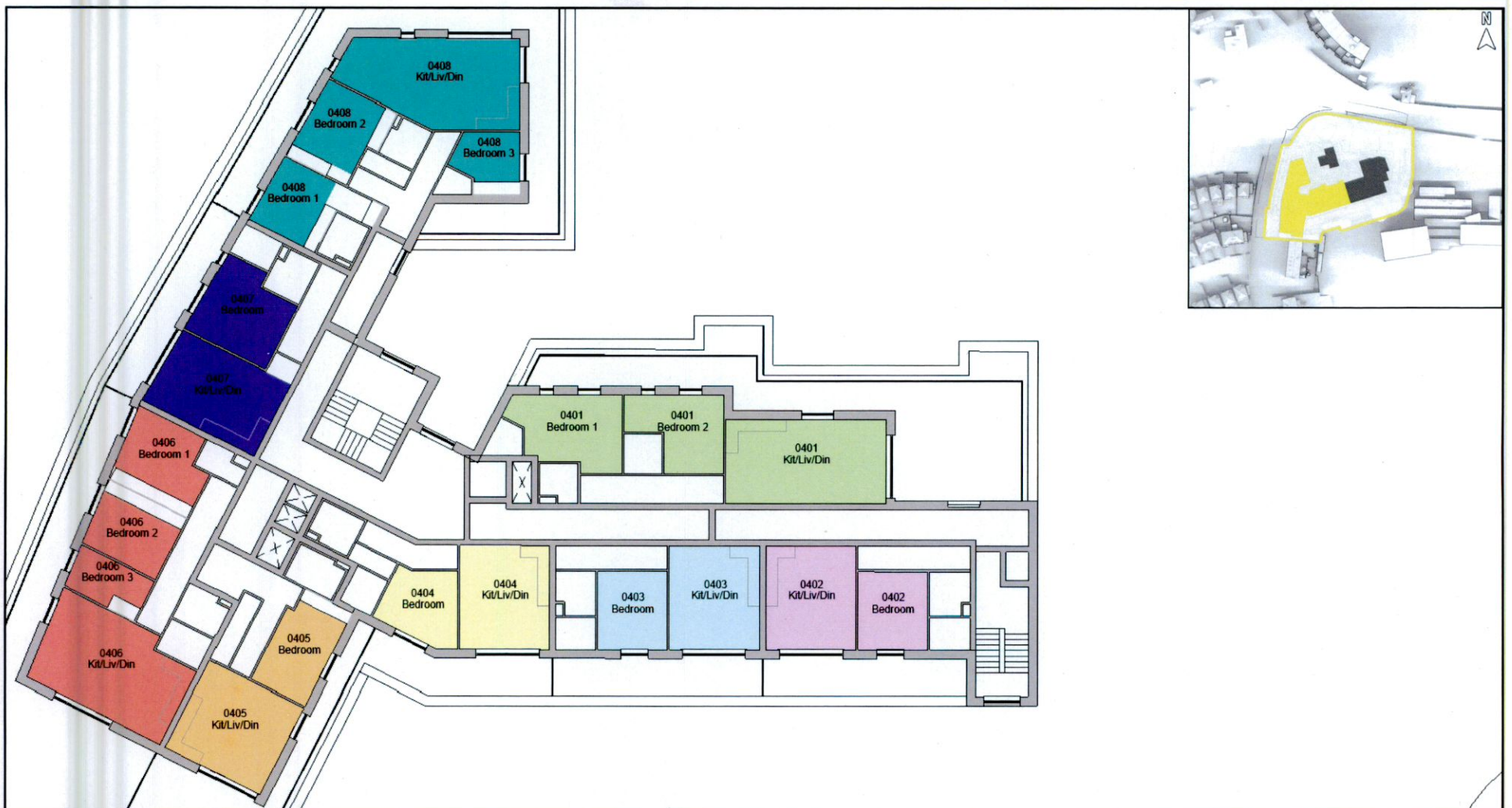


Figure C.12: Floor plan of assessed building (L), Keyplan highlighting the assessed building (R).

C.2.12 Scholarstown House

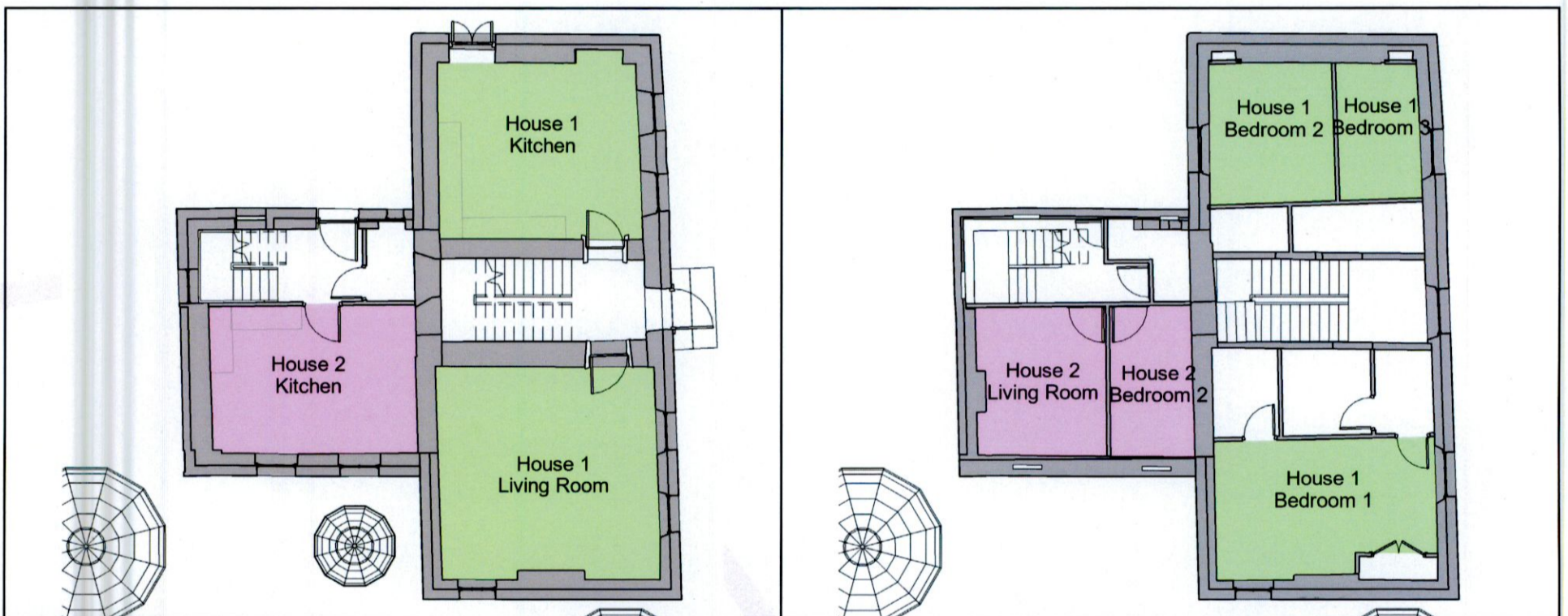
Table No. C.2.12 - Sunlight Exposure Results: Scholarstown House

Unit Number	Room Description	Deciduous Trees as Opaque Objects*			Without Deciduous Trees*		
		SE Hours on March 21st	Level of SE on March 21st***	Unit compliance based on highest performing room**	SE Hours on March 21st	Level of SE on March 21st***	Unit compliance based on highest performing room**
House 1	Kitchen	0.80	Non-Compliant	-	0.90	Non-Compliant	-
House 1	Living Room	1.10	Non-Compliant	-	1.10	Non-Compliant	-
House 1	Bedroom 1	4.80	High	Compliant	5.20	High	Compliant
House 1	Bedroom 2	0.00	Non-Compliant	-	0.00	Non-Compliant	-
House 1	Bedroom 3	1.40	Non-Compliant	-	1.80	Minimum	-
House 2	Kitchen	1.10	Non-Compliant	-	1.30	Non-Compliant	-
House 2	Living Room	4.70	High	-	5.00	High	-
House 2	Bedroom 2	4.30	High	-	4.30	High	-
House 2	Bedroom 1	7.40	High	Compliant	7.40	High	Compliant

* Rooms are tested with deciduous trees as opaque objects and without deciduous trees to account for the range of possible sunlight hours.

** The BRE Guidelines recommend that for a unit to be compliant any room within the unit should receive a minimum of 1.5 hours of direct sunlight on March 21st, preferably a main living room. The SE circa compliance rates across the entire scheme can be found in section 6.2.2 on page 20 of the corresponding report.

*** For the interpretation of levels of Sunlight Exposure please refer to "3.3 Definition of Levels of Sunlight Exposure" on page 11 of the corresponding report.



Ground Floor

First Floor



Second Floor

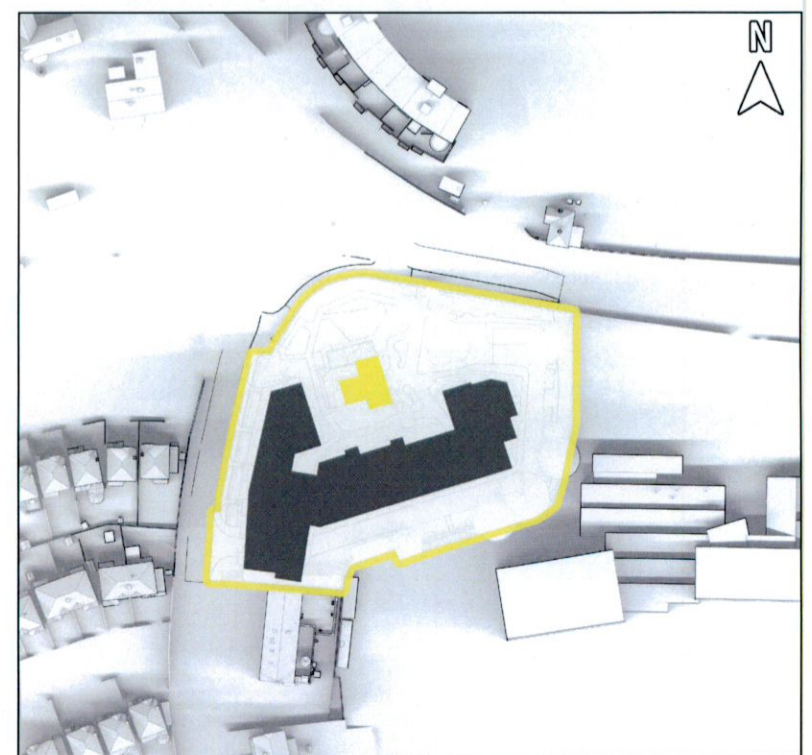


Figure C.13: Floor plan of assessed building, Keyplan highlighting the assessed building (L).

C.3 Spatial Daylight Autonomy (SDA) in Proposed Units

Below is an example of the table used to describe the spatial daylight autonomy results in proposed units.

Table Example. C.3 - Scheme Performance SDA								
Unit Number	Room Description	I.S. EN 17037			BRE 209			
		% of area above 300 Lux (recommendation >50%)	% of area above 100 Lux (recommendation >95%)	Meets I.S. EN 17037 Criteria*	Target Lux*	% of area above target Lux* (recommendation >50%)		Meets BRE 209 Criteria*
						Winter**	Summer**	
A	B	C	D	E	F	G	H	I

A: Unit Number

This column identifies the assessed unit. All unit numbers are determined by the architect's drawings, unless otherwise stated.

B: Room Description

Room Description details which room of the unit has been assessed, e.g. bedroom, LKD, etc.

C: % of area above 300 Lux

I.S. EN 17037 recommends at least 50% of the working plane receives above 300 lux for at least half the daylight hours.

This column states percentage of the working plane of the assessed room that is capable of receiving more than 300 lux for at least half the daylight hours.

D: % of area above 100 Lux

I.S. EN 17037 recommends at least 95% of the working plane receives above 100 lux for at least half the daylight hours.

This column states percentage of the working plane of the assessed room that is capable of receiving more than 100 lux for at least half the daylight hours.

E: Meets I.S. EN 17037 Criteria

This column states if the assessed room achieves the recommended level of daylight as per I.S. EN 17037. (300 lux across more than 50% of the working plane and 100 lux across more than 95% of the working plane for half the daylight hours)

F: Target Lux

Under BRE 209 the appropriate target lux levels to be achieved across 50% of the working plane of a room differ depending on the room type. Kitchens have a target lux of 200, living rooms have a target lux of 150 and bedrooms have a target lux of 100. In a room providing more than one function, such as an LKD, the higher target value should be taken i.e. 200 Lux.

G: % of area above target Lux (Winter)

BRE 209 recommends target lux levels to be achieved across at least 50% of the working plane for at least half the daylight hours. The target values differ depending on the room function, 200 lux for Kitchens, 150 lux for Living Rooms or 100 lux for Bedrooms.

This column states percentage of the working plane of the assessed room that is capable of receiving more than the appropriate target lux for at least half the daylight hours.

H: % of area above target Lux (Summer)

BRE 209 recommends target lux levels to be achieved across at least 50% of the working plane for at least half the daylight hours. The target values differ depending on the room function, 200 lux for Kitchens, 150 lux for Living Rooms or 100 lux for Bedrooms.

This column states percentage of the working plane of the assessed room that is capable of receiving more than the appropriate target lux for at least half the daylight hours.

I: Meets BRE 209 Criteria

This column states if the assessed room achieves the recommended level of daylight as per BRE 209.

Target lux levels achieved across more than 50% of the working plane: (200 lux for Kitchens, 150 lux for Living Rooms or 100 lux for Bedrooms). For rooms with multiple purposes, such as LKDs, the higher target value should be taken. If the criteria is achieved with deciduous trees in both winter and summer states, this column will state "Yes", if the criteria is not met in either state this column will state "No". This column states "Winter only" if the criteria is met with deciduous trees in the winter state but not in the summer state, which would be an indication that the summer foliage of trees is the reason for non-compliance.

It should be noted that the figures displayed in the table of results have been rounded off. A manual calculation on these figures may yield a negligible difference and should not be considered an error.

C.3.1 Proposed Block/Ground Floor

Table No. C.3.1 - SDA Results: Proposed Block/Ground Floor

Unit Number	Room Description	I.S. EN 17037			BRE 209			
		% of area above 300 Lux (recommendation >50%)	% of area above 100 Lux (recommendation >95%)	Meets I.S. EN 17037 Criteria*	Target Lux*	% of area above target Lux* (recommendation >50%)		Meets BRE 209 Criteria*
						Winter**	Summer**	
0001	Bedroom 1	29%	94%	No	100	100%	94%	Yes
0001	Bedroom 2	22%	83%	No	100	100%	78%	Yes
0001	Kit/Liv/Din	28%	68%	No	200	47%	42%	No
0002	Bedroom 1	12%	59%	No	100	90%	56%	Yes
0002	Bedroom 2	0%	41%	No	100	97%	44%	Winter Only
0002	Kit/Liv/Din	8%	39%	No	200	33%	20%	No
0003	Bedroom 1	0%	36%	No	100	100%	33%	Winter Only
0003	Bedroom 2	7%	58%	No	100	100%	53%	Yes
0003	Kit/Liv/Din	3%	36%	No	200	33%	16%	No
0004	Bedroom 1	3%	46%	No	100	88%	50%	Yes
0004	Bedroom 2	9%	59%	No	100	95%	62%	Yes
0004	Bedroom 3	29%	92%	No	100	98%	92%	Yes
0004	Kit/Liv/Din	69%	100%	Yes	200	100%	99%	Yes
0005	Bedroom	23%	77%	No	100	86%	69%	Yes
0005	Kit/Liv/Din	19%	64%	No	200	36%	34%	No

* For information regarding the criteria under the various guidelines including target Lux please refer to section 4.7 on page 14.

** Under the BRE 209 study the SDA has been calculated with deciduous trees represented with both winter and summer foliage. The SDA circa compliance rates across the entire scheme can be found in section 6.2.3 on page 21 of the corresponding report.



Figure C.14: Floor plan of assessed building (L), Keyplan highlighting the assessed building (R).

C.3.2 Proposed Block/Ground Floor

Table No. C.3.2 - SDA Results: Proposed Block/Ground Floor

Unit Number	Room Description	I.S. EN 17037			BRE 209			Meets BRE 209 Criteria*
		% of area above 300 Lux (recommendation >50%)	% of area above 100 Lux (recommendation >95%)	Meets I.S. EN 17037 Criteria*	Target Lux*	% of area above target Lux* (recommendation >50%)		
						Winter**	Summer**	
0006	Bedroom 1	3%	27%	No	100	29%	26%	No
0006	Bedroom 2	0%	46%	No	100	52%	44%	Winter Only
0006	Kit/Liv/Din	22%	69%	No	200	39%	35%	No
0007	Bedroom 1	21%	80%	No	100	85%	78%	Yes
0007	Bedroom 2	12%	92%	No	100	91%	86%	Yes
0007	Kit/Liv/Din	31%	87%	No	200	57%	51%	Yes
0008	Bedroom 1	17%	62%	No	100	59%	52%	Yes
0008	Bedroom 2	17%	93%	No	100	86%	77%	Yes
0008	Kit/Liv/Din	32%	100%	No	200	82%	69%	Yes
0009	Bedroom 1	15%	56%	No	100	60%	52%	Yes
0009	Bedroom 2	13%	78%	No	100	74%	55%	Yes
0009	Kit/Liv/Din	27%	100%	No	200	71%	52%	Yes
0010	Bedroom 1	24%	68%	No	100	71%	67%	Yes
0010	Bedroom 2	17%	68%	No	100	78%	63%	Yes
0010	Kit/Liv/Din	63%	100%	Yes	200	88%	83%	Yes
0011	Bedroom 1	25%	91%	No	100	94%	81%	Yes
0011	Bedroom 2	23%	70%	No	100	95%	72%	Yes
0011	Bedroom 3	8%	61%	No	100	73%	55%	Yes
0011	Kit/Liv/Din	53%	100%	Yes	200	99%	84%	Yes

* For information regarding the criteria under the various guidelines including target Lux please refer to section 4.7 on page 14.

** Under the BRE 209 study the SDA has been calculated with deciduous trees represented with both winter and summer foliage.

The SDA circa compliance rates across the entire scheme can be found in section 6.2.3 on page 21 of the corresponding report.

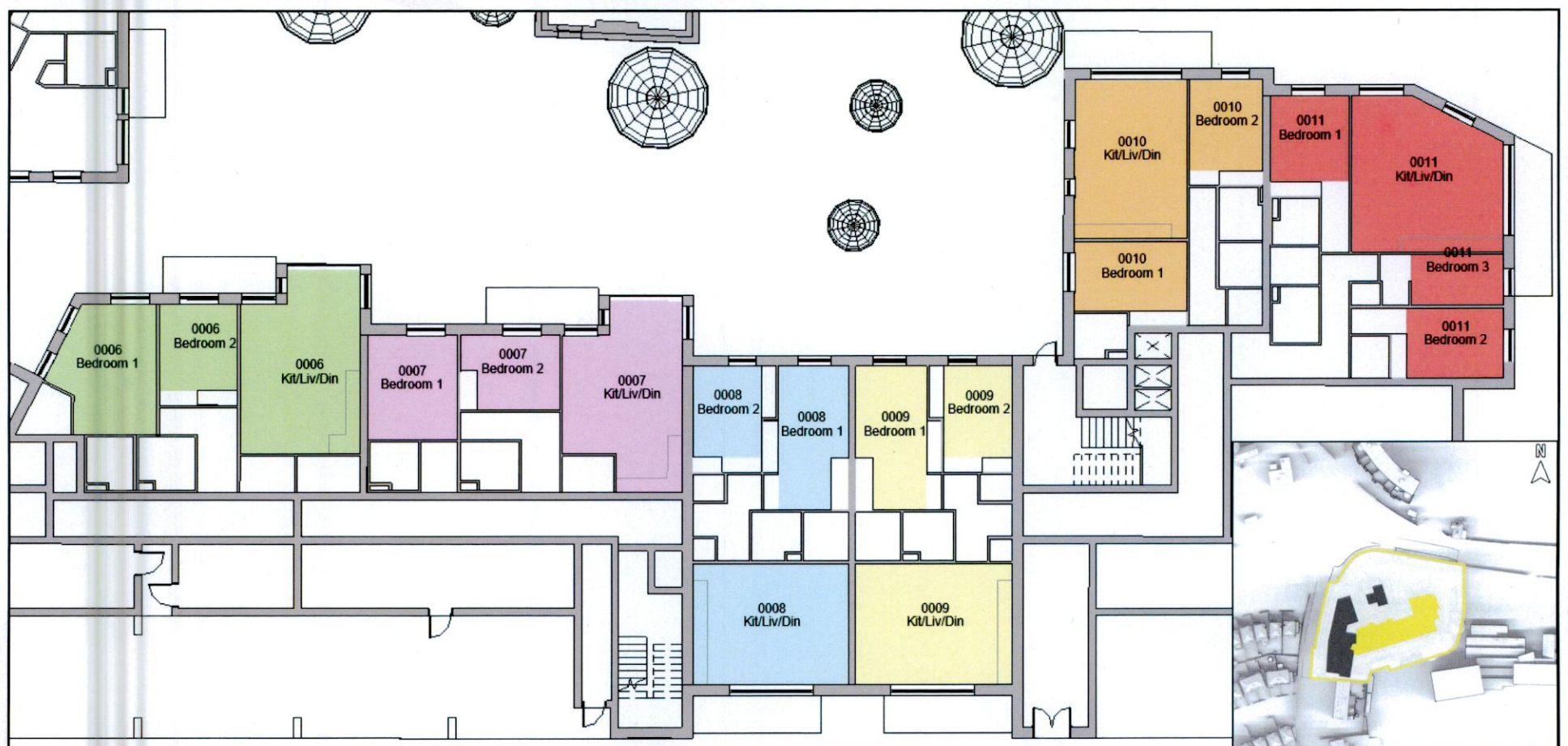


Figure C.15: Floor plan of assessed building (L), Keyplan highlighting the assessed building (R).

C.3.3 Proposed Block/First Floor

Table No. C.3.3 - SDA Results: Proposed Block/First Floor

Unit Number	Room Description	I.S. EN 17037			BRE 209			Meets BRE 209 Criteria*
		% of area above 300 Lux (recommendation >50%)	% of area above 100 Lux (recommendation >95%)	Meets I.S. EN 17037 Criteria*	Target Lux*	% of area above target Lux* (recommendation >50%)		
						Winter**	Summer**	
0105	Bedroom 1	37%	100%	No	100	100%	100%	Yes
0105	Bedroom 2	30%	100%	No	100	100%	100%	Yes
0105	Kit/Liv/Din	34%	84%	No	200	55%	50%	Yes
0106	Bedroom 1	18%	89%	No	100	100%	89%	Yes
0106	Bedroom 2	10%	62%	No	100	100%	52%	Yes
0106	Kit/Liv/Din	3%	36%	No	200	33%	15%	No
0107	Bedroom 1	4%	42%	No	100	100%	40%	Winter Only
0107	Bedroom 2	24%	100%	No	100	100%	100%	Yes
0107	Kit/Liv/Din	5%	40%	No	200	35%	17%	No
0108	Bedroom 1	11%	56%	No	100	100%	56%	Yes
0108	Bedroom 2	10%	68%	No	100	100%	61%	Yes
0108	Bedroom 3	61%	100%	Yes	100	100%	100%	Yes
0108	Kit/Liv/Din	83%	100%	Yes	200	100%	100%	Yes
0109	Bedroom	56%	100%	Yes	100	100%	100%	Yes
0109	Kit/Liv/Din	32%	96%	No	200	55%	54%	Yes

* For information regarding the criteria under the various guidelines including target Lux please refer to section 4.7 on page 14.

** Under the BRE 209 study the SDA has been calculated with deciduous trees represented with both winter and summer foliage.

The SDA circa compliance rates across the entire scheme can be found in section 6.2.3 on page 21 of the corresponding report.



Figure C.16: Floor plan of assessed building (L), Keyplan highlighting the assessed building (R).

C.3.4 Proposed Block/First Floor

Unit Number	Room Description	I.S. EN 17037			BRE 209			Meets BRE 209 Criteria*
		% of area above 300 Lux (recommendation >50%)	% of area above 100 Lux (recommendation >95%)	Meets I.S. EN 17037 Criteria*	Target Lux*	% of area above target Lux* (recommendation >50%)		
						Winter**	Summer**	
0101	Bedroom	38%	100%	No	100	100%	100%	Yes
0101	Kit/Liv/Din	51%	100%	Yes	200	77%	72%	Yes
0102	Bedroom	73%	100%	Yes	100	100%	100%	Yes
0102	Kit/Liv/Din	53%	100%	Yes	200	75%	73%	Yes
0103	Bedroom	95%	100%	Yes	100	100%	100%	Yes
0103	Kit/Liv/Din	72%	100%	Yes	200	100%	100%	Yes
0104	Bedroom 1	96%	100%	Yes	100	100%	100%	Yes
0104	Bedroom 2	59%	100%	Yes	100	100%	100%	Yes
0104	Kit/Liv/Din	56%	100%	Yes	200	82%	76%	Yes
0110	Bedroom 1	8%	54%	No	100	59%	54%	Yes
0110	Bedroom 2	3%	60%	No	100	70%	59%	Yes
0110	Kit/Liv/Din	33%	89%	No	200	51%	47%	Winter Only
0111	Bedroom 1	30%	100%	No	100	100%	99%	Yes
0111	Bedroom 2	17%	98%	No	100	93%	93%	Yes
0111	Kit/Liv/Din	47%	98%	No	200	74%	66%	Yes

* For information regarding the criteria under the various guidelines including target Lux please refer to section 4.7 on page 14.

** Under the BRE 209 study the SDA has been calculated with deciduous trees represented with both winter and summer foliage.

The SDA circa compliance rates across the entire scheme can be found in section 6.2.3 on page 21 of the corresponding report.



Figure C.17: Floor plan of assessed building (L), Keyplan highlighting the assessed building (R).

C.3.5 Proposed Block/First Floor

Table No. C.3.5 - SDA Results: Proposed Block/First Floor

Unit Number	Room Description	I.S. EN 17037			BRE 209			
		% of area above 300 Lux (recommendation >50%)	% of area above 100 Lux (recommendation >95%)	Meets I.S. EN 17037 Criteria*	Target Lux*	% of area above target Lux* (recommendation >50%)		Meets BRE 209 Criteria*
						Winter**	Summer**	
0112	Bedroom 1	28%	100%	No	100	99%	99%	Yes
0112	Bedroom 2	28%	72%	No	100	70%	65%	Yes
0112	Kit/Liv/Din	42%	100%	No	200	94%	86%	Yes
0113	Bedroom 1	26%	100%	No	100	100%	96%	Yes
0113	Bedroom 2	28%	70%	No	100	72%	69%	Yes
0113	Kit/Liv/Din	40%	100%	No	200	85%	77%	Yes
0114	Bedroom 1	38%	99%	No	100	99%	98%	Yes
0114	Bedroom 2	27%	100%	No	100	100%	96%	Yes
0114	Kit/Liv/Din	82%	100%	Yes	200	99%	98%	Yes
0115	Bedroom 1	45%	100%	No	100	100%	100%	Yes
0115	Bedroom 2	37%	100%	No	100	100%	99%	Yes
0115	Bedroom 3	19%	100%	No	100	100%	89%	Yes
0115	Kit/Liv/Din	76%	100%	Yes	200	100%	98%	Yes
0116	Bedroom	23%	100%	No	100	100%	100%	Yes
0116	Kit/Liv/Din	52%	99%	Yes	200	74%	64%	Yes
0117	Bedroom	21%	84%	No	100	85%	82%	Yes
0117	Kit/Liv/Din	68%	100%	Yes	200	95%	93%	Yes
0118	Bedroom	42%	100%	No	100	100%	100%	Yes
0118	Kit/Liv/Din	19%	62%	No	200	37%	33%	No

* For information regarding the criteria under the various guidelines including target Lux please refer to section 4.7 on page 14.

** Under the BRE 209 study the SDA has been calculated with deciduous trees represented with both winter and summer foliage. The SDA circa compliance rates across the entire scheme can be found in section 6.2.3 on page 21 of the corresponding report.

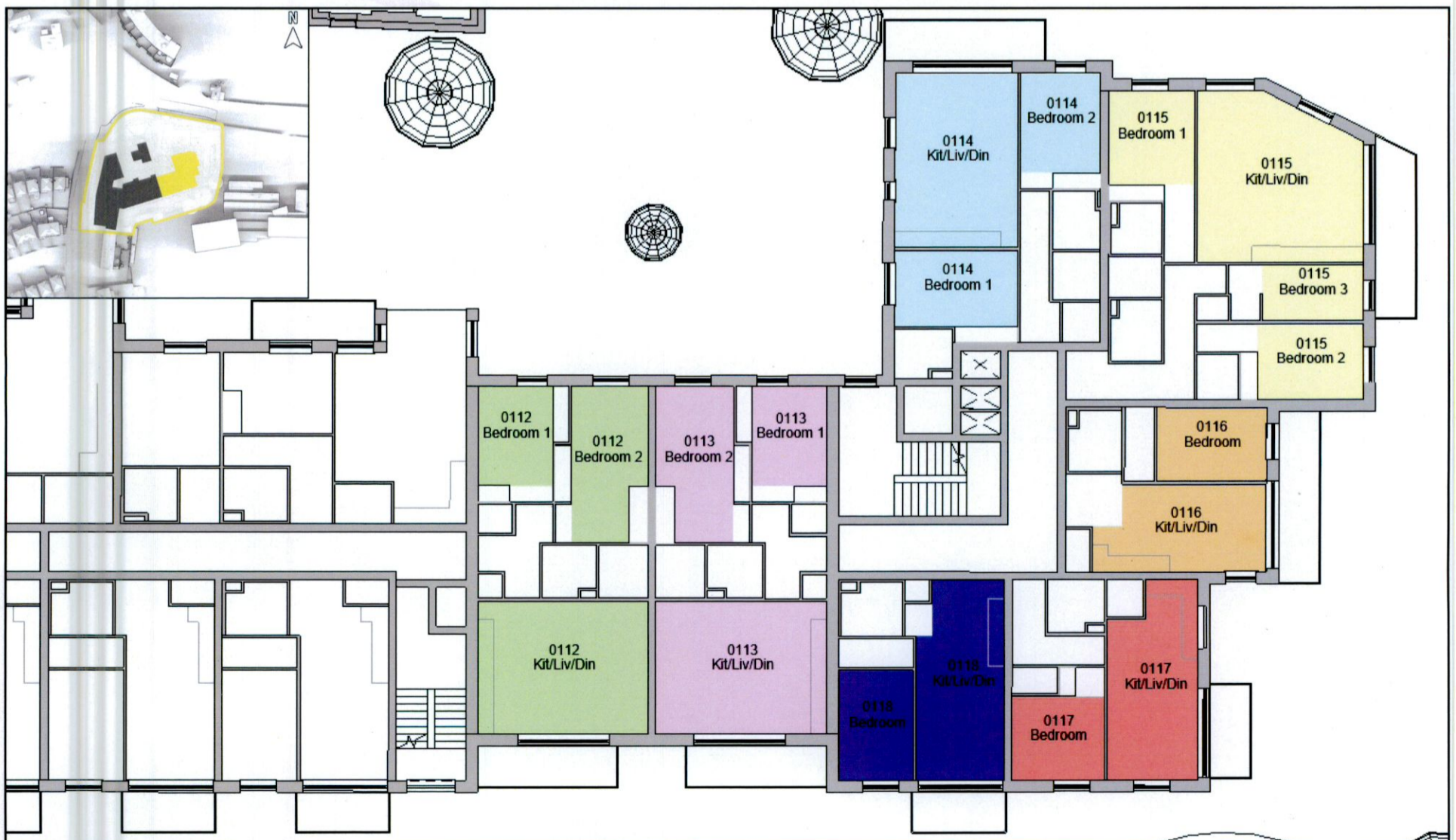


Figure C.18: Floor plan of assessed building (R), Keyplan highlighting the assessed building (L).

C.3.6 Proposed Block/Second Floor

Table No. C.3.6 - SDA Results: Proposed Block/Second Floor

Unit Number	Room Description	I.S. EN 17037			BRE 209			Meets BRE 209 Criteria*
		% of area above 300 Lux (recommendation >50%)	% of area above 100 Lux (recommendation >95%)	Meets I.S. EN 17037 Criteria*	Target Lux*	% of area above target Lux* (recommendation >50%)		
						Winter**	Summer**	
0205	Bedroom	23%	97%	No	100	95%	95%	Yes
0205	Kit/Liv/Din	45%	100%	No	200	65%	62%	Yes
0206	Bedroom 1	98%	100%	Yes	100	100%	100%	Yes
0206	Bedroom 2	100%	100%	Yes	100	100%	100%	Yes
0206	Kit/Liv/Din	54%	100%	Yes	200	87%	85%	Yes
0207	Bedroom	78%	100%	Yes	100	100%	100%	Yes
0207	Kit/Liv/Din	77%	100%	Yes	200	100%	99%	Yes
0208	Bedroom	66%	100%	Yes	100	100%	100%	Yes
0208	Kit/Liv/Din	74%	100%	Yes	200	99%	92%	Yes
0209	Bedroom	53%	100%	Yes	100	100%	100%	Yes
0209	Kit/Liv/Din	60%	100%	Yes	200	83%	78%	Yes
0210	Bedroom 1	39%	100%	No	100	100%	100%	Yes
0210	Bedroom 2	40%	100%	No	100	100%	98%	Yes
0210	Kit/Liv/Din	14%	45%	No	200	40%	26%	No
0211	Bedroom 1	29%	95%	No	100	100%	91%	Yes
0211	Bedroom 2	49%	100%	No	100	100%	100%	Yes
0211	Kit/Liv/Din	19%	55%	No	200	45%	34%	No
0212	Bedroom 1	30%	89%	No	100	100%	87%	Yes
0212	Bedroom 2	30%	92%	No	100	100%	84%	Yes
0212	Bedroom 3	89%	100%	Yes	100	100%	100%	Yes
0212	Kit/Liv/Din	100%	100%	Yes	200	100%	100%	Yes
0213	Bedroom	85%	100%	Yes	100	100%	100%	Yes
0213	Kit/Liv/Din	51%	100%	Yes	200	67%	67%	Yes

* For information regarding the criteria under the various guidelines including target Lux please refer to section 4.7 on page 14.

** Under the BRE 209 study the SDA has been calculated with deciduous trees represented with both winter and summer foliage.

The SDA circa compliance rates across the entire scheme can be found in section 6.2.3 on page 21 of the corresponding report.



Figure C.19: Floor plan of assessed building, Keyplan highlighting the assessed building (L).

C.3.7 Proposed Block/Second Floor

Table No. C.3.7 - SDA Results: Proposed Block/Second Floor

Unit Number	Room Description	I.S. EN 17037			BRE 209			Meets BRE 209 Criteria*
		% of area above 300 Lux (recommendation >50%)	% of area above 100 Lux (recommendation >95%)	Meets I.S. EN 17037 Criteria*	Target Lux*	% of area above target Lux* (recommendation >50%)		
						Winter**	Summer**	
0201	Bedroom	57%	100%	Yes	100	100%	100%	Yes
0201	Kit/Liv/Din	67%	100%	Yes	200	90%	88%	Yes
0202	Bedroom	100%	100%	Yes	100	100%	100%	Yes
0202	Kit/Liv/Din	66%	100%	Yes	200	91%	88%	Yes
0203	Bedroom	100%	100%	Yes	100	100%	100%	Yes
0203	Kit/Liv/Din	91%	100%	Yes	200	100%	100%	Yes
0204	Bedroom 1	100%	100%	Yes	100	100%	100%	Yes
0204	Bedroom 2	71%	100%	Yes	100	100%	100%	Yes
0204	Kit/Liv/Din	72%	100%	Yes	200	100%	100%	Yes
0214	Bedroom 1	19%	81%	No	100	85%	79%	Yes
0214	Bedroom 2	13%	97%	No	100	98%	96%	Yes
0214	Kit/Liv/Din	44%	100%	No	200	66%	61%	Yes
0215	Bedroom 1	38%	100%	No	100	100%	100%	Yes
0215	Bedroom 2	37%	100%	No	100	99%	96%	Yes
0215	Kit/Liv/Din	62%	100%	Yes	200	85%	83%	Yes

* For information regarding the criteria under the various guidelines including target Lux please refer to section 4.7 on page 14.

** Under the BRE 209 study the SDA has been calculated with deciduous trees represented with both winter and summer foliage.

The SDA circa compliance rates across the entire scheme can be found in section 6.2.3 on page 21 of the corresponding report.



Figure C.20: Floor plan of assessed building (L), Keyplan highlighting the assessed building (R).

C.3.8 Proposed Block/Second Floor

Table No. C.3.8 - SDA Results: Proposed Block/Second Floor

Unit Number	Room Description	I.S. EN 17037			BRE 209			Meets BRE 209 Criteria*
		% of area above 300 Lux (recommendation >50%)	% of area above 100 Lux (recommendation >95%)	Meets I.S. EN 17037 Criteria*	Target Lux*	% of area above target Lux* (recommendation >50%)		
						Winter**	Summer**	
0216	Bedroom 1	28%	100%	No	100	100%	100%	Yes
0216	Bedroom 2	30%	76%	No	100	72%	71%	Yes
0216	Kit/Liv/Din	100%	100%	Yes	200	100%	100%	Yes
0217	Bedroom 1	33%	100%	No	100	100%	100%	Yes
0217	Bedroom 2	29%	74%	No	100	75%	73%	Yes
0217	Kit/Liv/Din	100%	100%	Yes	200	100%	100%	Yes
0218	Bedroom 1	50%	100%	Yes	100	100%	100%	Yes
0218	Bedroom 2	41%	100%	No	100	100%	100%	Yes
0218	Kit/Liv/Din	100%	100%	Yes	200	100%	100%	Yes
0219	Bedroom 1	59%	100%	Yes	100	100%	100%	Yes
0219	Bedroom 2	48%	100%	No	100	100%	100%	Yes
0219	Bedroom 3	67%	100%	Yes	100	100%	100%	Yes
0219	Kit/Liv/Din	100%	100%	Yes	200	100%	100%	Yes
0220	Bedroom	35%	100%	No	100	100%	100%	Yes
0220	Kit/Liv/Din	70%	100%	Yes	200	93%	84%	Yes
0221	Bedroom	48%	100%	No	100	100%	100%	Yes
0221	Kit/Liv/Din	98%	100%	Yes	200	100%	100%	Yes
0222	Bedroom	78%	100%	Yes	100	100%	100%	Yes
0222	Kit/Liv/Din	59%	100%	Yes	200	75%	74%	Yes

* For information regarding the criteria under the various guidelines including target Lux please refer to section 4.7 on page 14.

** Under the BRE 209 study the SDA has been calculated with deciduous trees represented with both winter and summer foliage. The SDA circa compliance rates across the entire scheme can be found in section 6.2.3 on page 21 of the corresponding report.

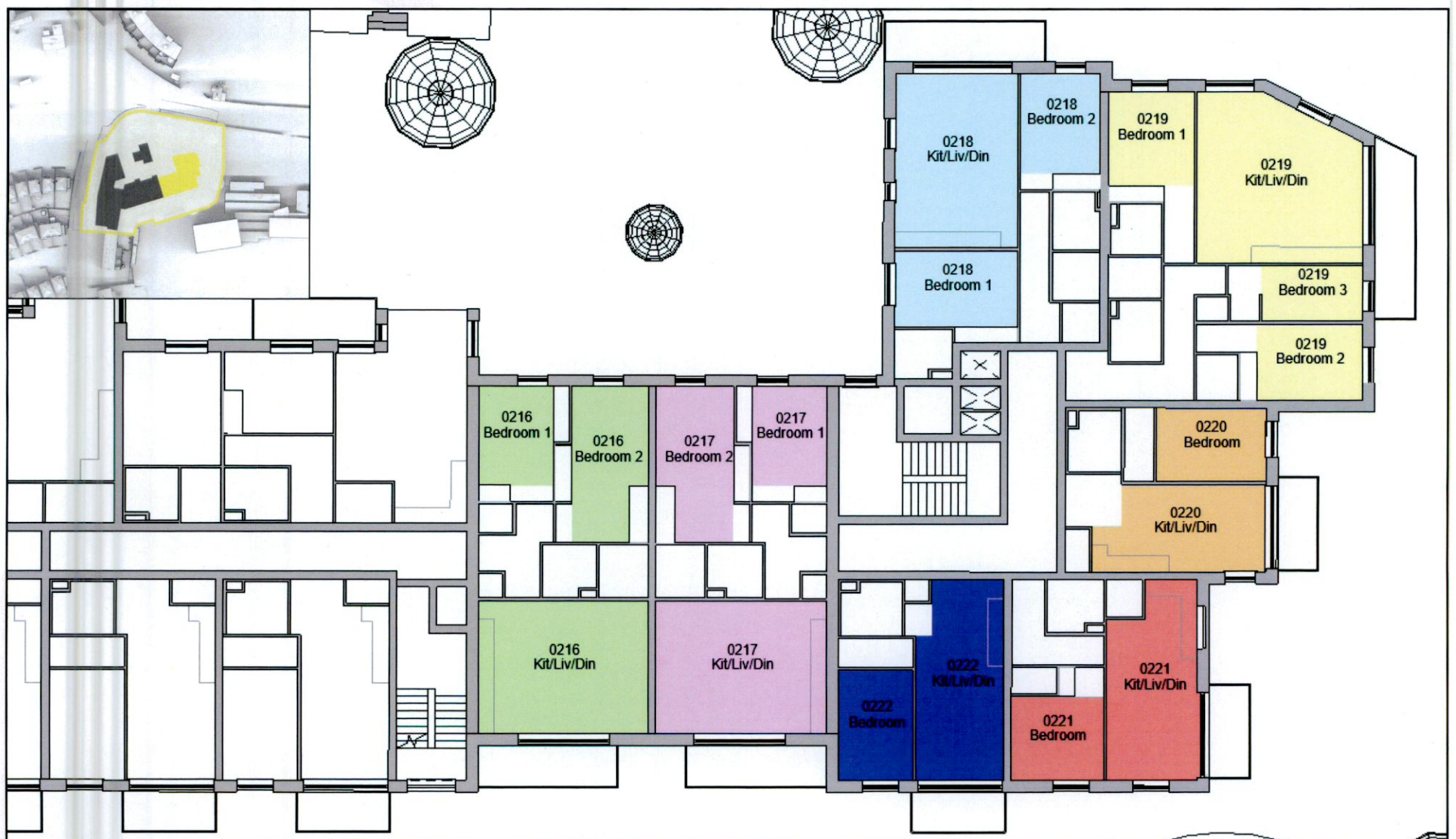


Figure C.21: Floor plan of assessed building (L), Keyplan highlighting the assessed building (R).

C.3.9 Proposed Block/Third Floor

Table No. C.3.9 - SDA Results: Proposed Block/Third Floor

Unit Number	Room Description	I.S. EN 17037			BRE 209			
		% of area above 300 Lux (recommendation >50%)	% of area above 100 Lux (recommendation >95%)	Meets I.S. EN 17037 Criteria*	Target Lux*	% of area above target Lux* (recommendation >50%)		Meets BRE 209 Criteria*
						Winter**	Summer**	
0305	Bedroom	35%	100%	No	100	100%	100%	Yes
0305	Kit/Liv/Din	60%	100%	Yes	200	95%	94%	Yes
0306	Bedroom 1	100%	100%	Yes	100	100%	100%	Yes
0306	Bedroom 2	100%	100%	Yes	100	100%	100%	Yes
0306	Kit/Liv/Din	71%	100%	Yes	200	99%	99%	Yes
0307	Bedroom	90%	100%	Yes	100	100%	100%	Yes
0307	Kit/Liv/Din	98%	100%	Yes	200	100%	100%	Yes
0308	Bedroom	91%	100%	Yes	100	100%	100%	Yes
0308	Kit/Liv/Din	92%	100%	Yes	200	100%	100%	Yes
0309	Bedroom	74%	100%	Yes	100	100%	100%	Yes
0309	Kit/Liv/Din	78%	100%	Yes	200	100%	100%	Yes
0310	Bedroom 1	71%	100%	Yes	100	100%	100%	Yes
0310	Bedroom 2	97%	100%	Yes	100	100%	100%	Yes
0310	Kit/Liv/Din	51%	98%	Yes	200	67%	64%	Yes
0311	Bedroom 1	88%	100%	Yes	100	100%	100%	Yes
0311	Bedroom 2	99%	100%	Yes	100	100%	100%	Yes
0311	Kit/Liv/Din	53%	100%	Yes	200	69%	66%	Yes
0312	Bedroom 1	61%	100%	Yes	100	100%	100%	Yes
0312	Bedroom 2	68%	100%	Yes	100	100%	100%	Yes
0312	Bedroom 3	97%	100%	Yes	100	100%	100%	Yes
0312	Kit/Liv/Din	100%	100%	Yes	200	100%	100%	Yes
0313	Bedroom	97%	100%	Yes	100	100%	100%	Yes
0313	Kit/Liv/Din	71%	100%	Yes	200	96%	96%	Yes

* For information regarding the criteria under the various guidelines including target Lux please refer to section 4.7 on page 14.

** Under the BRE 209 study the SDA has been calculated with deciduous trees represented with both winter and summer foliage.

The SDA circa compliance rates across the entire scheme can be found in section 6.2.3 on page 21 of the corresponding report.



Figure C.22: Floor plan of assessed building, Keyplan highlighting the assessed building (L).

C.3.10 Proposed Block/Third Floor

Table No. C.3.10 - SDA Results: Proposed Block/Third Floor

Unit Number	Room Description	I.S. EN 17037			Target Lux*	BRE 209		Meets BRE 209 Criteria*
		% of area above 300 Lux (recommendation >50%)	% of area above 100 Lux (recommendation >95%)	Meets I.S. EN 17037 Criteria*		% of area above target Lux* (recommendation >50%)		
						Winter**	Summer**	
0301	Bedroom	90%	100%	Yes	100	100%	100%	Yes
0301	Kit/Liv/Din	94%	100%	Yes	200	100%	100%	Yes
0302	Bedroom	100%	100%	Yes	100	100%	100%	Yes
0302	Kit/Liv/Din	93%	100%	Yes	200	100%	100%	Yes
0303	Bedroom	100%	100%	Yes	100	100%	100%	Yes
0303	Kit/Liv/Din	100%	100%	Yes	200	100%	100%	Yes
0304	Bedroom 1	100%	100%	Yes	100	100%	100%	Yes
0304	Bedroom 2	100%	100%	Yes	100	100%	100%	Yes
0304	Kit/Liv/Din	99%	100%	Yes	200	100%	100%	Yes
0314	Bedroom 2	65%	100%	Yes	100	100%	100%	Yes
0314	Kit/Liv/Din	60%	100%	Yes	200	96%	92%	Yes
0315	Bedroom 1	51%	100%	Yes	100	100%	100%	Yes
0315	Bedroom 2	95%	100%	Yes	100	100%	100%	Yes
0315	Kit/Liv/Din	92%	100%	Yes	200	100%	100%	Yes
0315	Kit/Liv/Din	92%	100%	Yes	200	100%	100%	Yes

* For information regarding the criteria under the various guidelines including target Lux please refer to section 4.7 on page 14.

** Under the BRE 209 study the SDA has been calculated with deciduous trees represented with both winter and summer foliage. The SDA circa compliance rates across the entire scheme can be found in section 6.2.3 on page 21 of the corresponding report.



Figure C.23: Floor plan of assessed building (L), Keyplan highlighting the assessed building (R).

C.3.11 Proposed Block/Fourth Floor

Table No. C.3.11 - SDA Results: Proposed Block/Fourth Floor

Unit Number	Room Description	I.S. EN 17037			Target Lux*	BRE 209		Meets BRE 209 Criteria*
		% of area above 300 Lux (recommendation >50%)	% of area above 100 Lux (recommendation >95%)	Meets I.S. EN 17037 Criteria*		% of area above target Lux* (recommendation >50%)		
						Winter**	Summer**	
0401	Bedroom 1	54%	100%	Yes	100	100%	100%	Yes
0401	Bedroom 2	65%	100%	Yes	100	100%	100%	Yes
0401	Kit/Liv/Din	72%	100%	Yes	200	93%	89%	Yes
0402	Bedroom	100%	100%	Yes	100	100%	100%	Yes
0402	Kit/Liv/Din	100%	100%	Yes	200	100%	100%	Yes
0403	Bedroom	100%	100%	Yes	100	100%	100%	Yes
0403	Kit/Liv/Din	100%	100%	Yes	200	100%	100%	Yes
0404	Bedroom	100%	100%	Yes	100	100%	100%	Yes
0404	Kit/Liv/Din	100%	100%	Yes	200	100%	100%	Yes
0405	Bedroom	74%	100%	Yes	100	100%	100%	Yes
0405	Kit/Liv/Din	100%	100%	Yes	200	100%	100%	Yes
0406	Bedroom 1	70%	100%	Yes	100	100%	100%	Yes
0406	Bedroom 2	57%	83%	No	100	92%	92%	Yes
0406	Bedroom 3	92%	100%	Yes	100	100%	100%	Yes
0406	Kit/Liv/Din	100%	100%	Yes	200	100%	100%	Yes
0407	Bedroom	100%	100%	Yes	100	100%	100%	Yes
0407	Kit/Liv/Din	77%	100%	Yes	200	100%	100%	Yes
0408	Bedroom 1	67%	100%	Yes	100	100%	100%	Yes
0408	Bedroom 2	99%	100%	Yes	100	100%	100%	Yes
0408	Bedroom 3	100%	100%	Yes	100	100%	100%	Yes
0408	Kit/Liv/Din	100%	100%	Yes	200	100%	100%	Yes

* For information regarding the criteria under the various guidelines including target Lux please refer to section 4.7 on page 14.

** Under the BRE 209 study the SDA has been calculated with deciduous trees represented with both winter and summer foliage. The SDA circa compliance rates across the entire scheme can be found in section 6.2.3 on page 21 of the corresponding report.

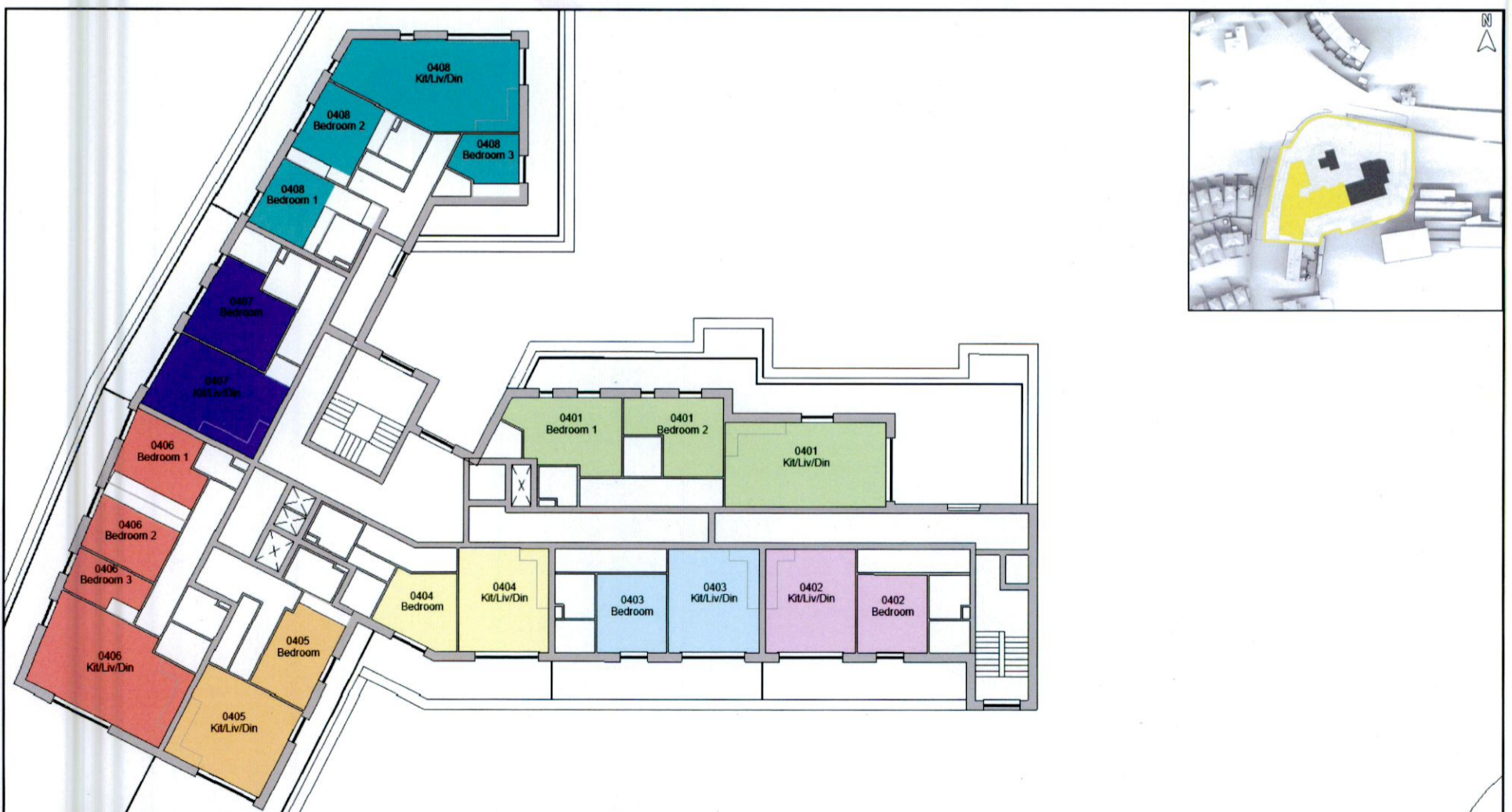


Figure C.24: Floor plan of assessed building (L), Keyplan highlighting the assessed building (R).

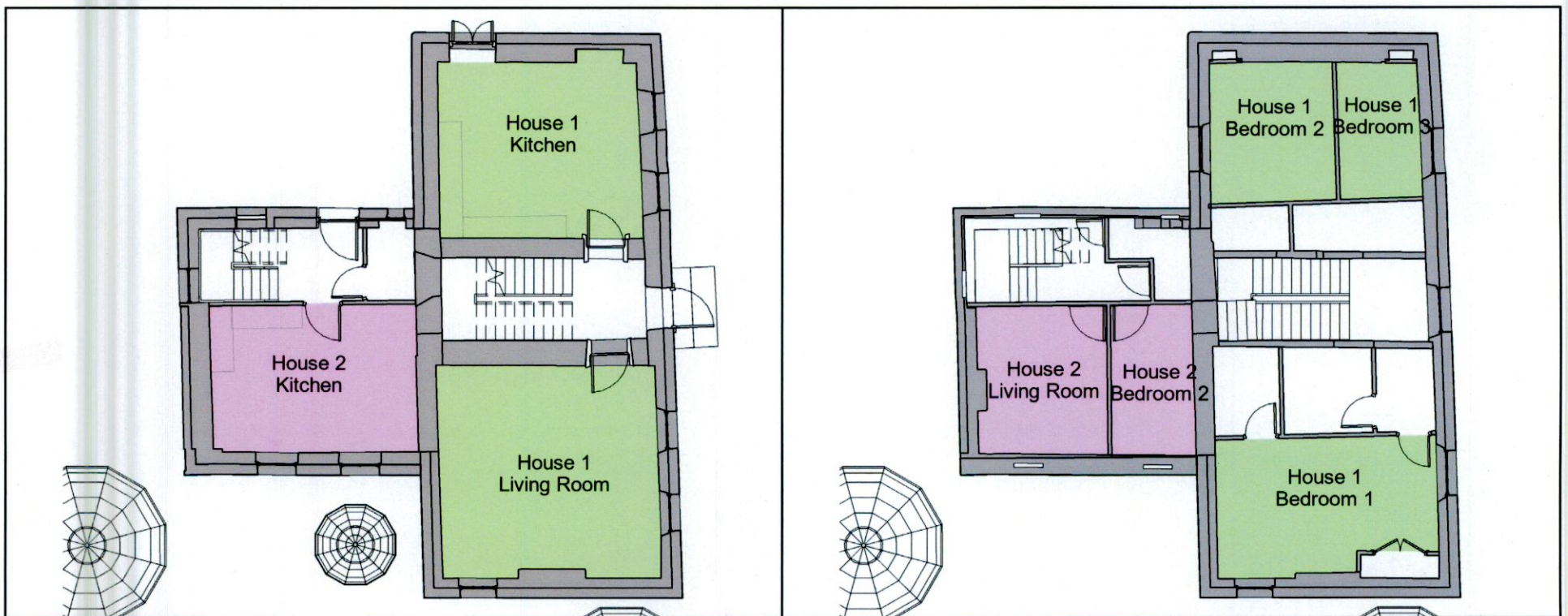
C.3.12 Scholarstown House

Table No. C.3.12 - SDA Results: Scholarstown House

Unit Number	Room Description	I.S. EN 17037			BRE 209			
		% of area above 300 Lux (recommendation >50%)	% of area above 100 Lux (recommendation >95%)	Meets I.S. EN 17037 Criteria*	Target Lux*	% of area above target Lux* (recommendation >50%)		Meets BRE 209 Criteria*
						Winter**	Summer**	
House 1	Kitchen	11%	93%	No	200	36%	30%	No
House 1	Living Room	8%	67%	No	150	42%	39%	No
House 1	Bedroom 1	5%	33%	No	100	39%	35%	No
House 1	Bedroom 2	0%	9%	No	100	14%	8%	No
House 1	Bedroom 3	22%	97%	No	100	88%	86%	Yes
House 2	Kitchen	0%	11%	No	200	6%	6%	No
House 2	Living Room	3%	21%	No	150	16%	16%	No
House 2	Bedroom 2	8%	30%	No	100	33%	31%	No
House 2	Bedroom 1	0%	5%	No	100	7%	7%	No

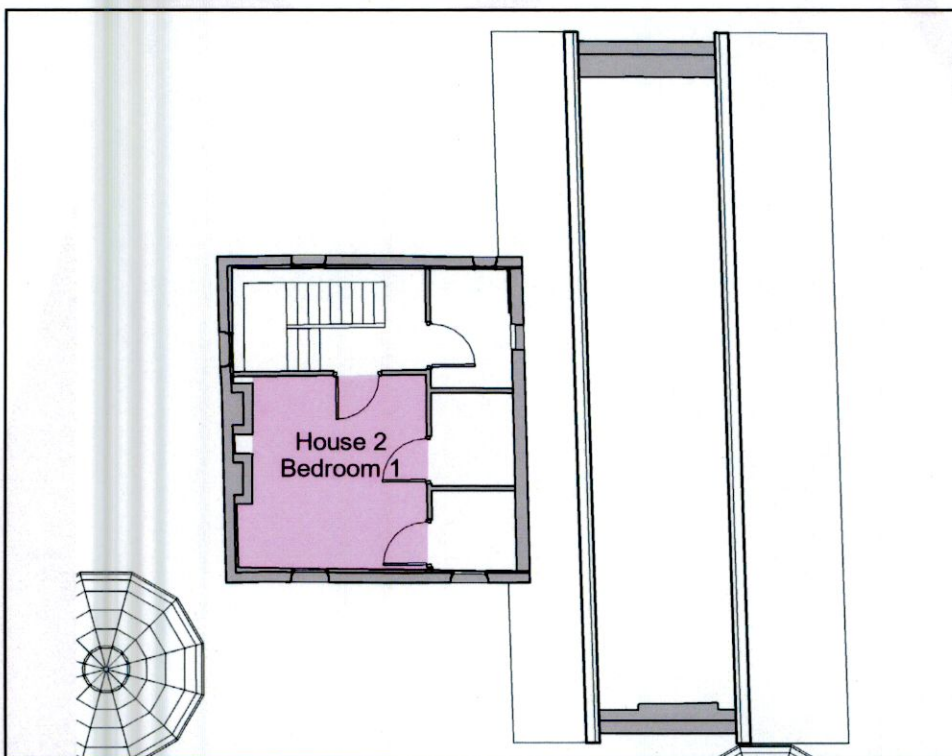
* For information regarding the criteria under the various guidelines including target Lux please refer to section 4.7 on page 14.

** Under the BRE 209 study the SDA has been calculated with deciduous trees represented with both winter and summer foliage. The SDA circa compliance rates across the entire scheme can be found in section 6.2.3 on page 21 of the corresponding report.



Ground Floor

First Floor



Second Floor

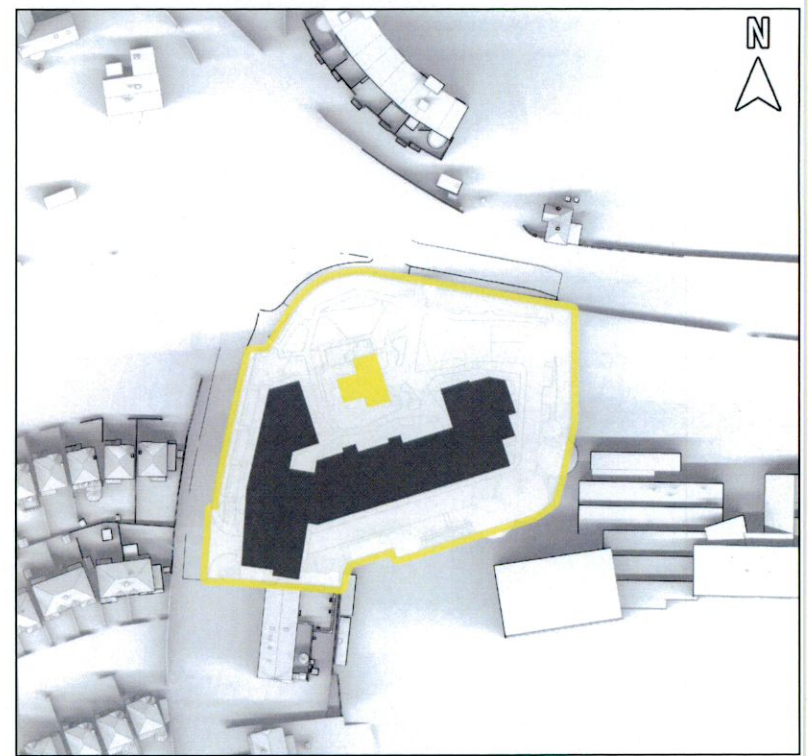


Figure C.25: Floor plan of assessed building, Keyplan highlighting the assessed building (L).