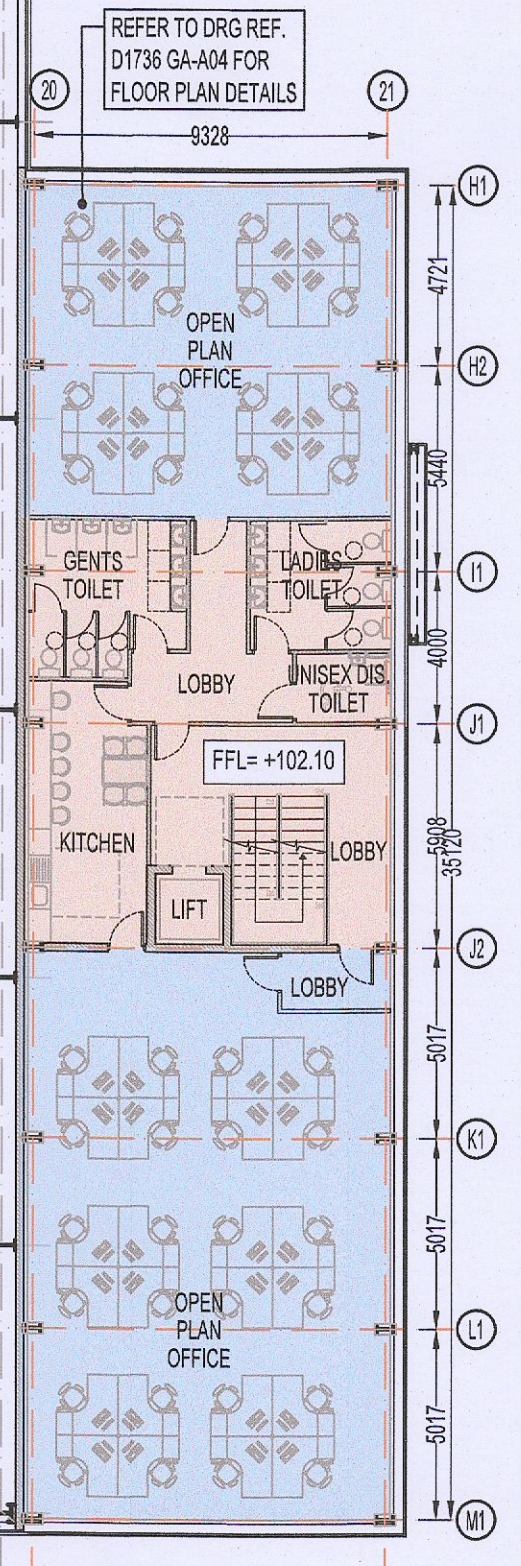


TABLE OF GROSS INTERNAL FLOOR AREAS & USES:

	WAREHOUSE	ANCILLARY STAFF FACILITIES	ANCILLARY OFFICE	TOTAL
GROUND FLOOR	10,604 m <sup>2</sup> 114,141 sq.ft.	277 m <sup>2</sup> 2,981 sq.ft.	122 m <sup>2</sup> 1,313 sq.ft.	11,003 m <sup>2</sup> 118,436 sq.ft.
1ST FLOOR	-	111 m <sup>2</sup> 1,195 sq.ft.	233 m <sup>2</sup> 2,508 sq.ft.	344 m <sup>2</sup> 3,703 sq.ft.
2ND FLOOR	-	111 m <sup>2</sup> 1,195 sq.ft.	233 m <sup>2</sup> 2,508 sq.ft.	344 m <sup>2</sup> 3,703 sq.ft.
TOTAL	10,604 m <sup>2</sup> 114,141 sq.ft.	499 m <sup>2</sup> 5,371 sq.ft.	588 m <sup>2</sup> 6,329 sq.ft.	11,691 m <sup>2</sup> 125,842 sq.ft.



PL2	21/10/22	GS	PK	PK	ISSUED FOR PLANNING - A1
PL1	23/02/22	GS	PK	PK	ISSUED FOR PLANNING
Mark	Date	By	Chk.	App.	Permit

Drawing Class:  
**PLANNING A1**

Job Title:  
**WAREHOUSE DEVELOPMENT AT KINGSWOOD ROAD, CITYWEST BUSINESS PARK, Co. DUBLIN**

Drawing Title:  
**FIRST FLOOR PLAN**

Architect:  
**ROCKFACE DEVELOPMENTS LTD.**

**KAVANAGH BURKE**  
CONSULTING ENGINEERS

Tel. 01 - 450 0694 Unit F3 Calmount Park, Ballymount, Dublin 12.  
Fax. 01 - 426 4340  
Email. pkavanagh@kavanaghburke.ie

Drn	GS	Checked	PK	Approved	PK
Scale	1:200 @ A1			Date	OCT 2022
Job No.	D1736	Drawing No.	GA-A02	Rev.	PL2