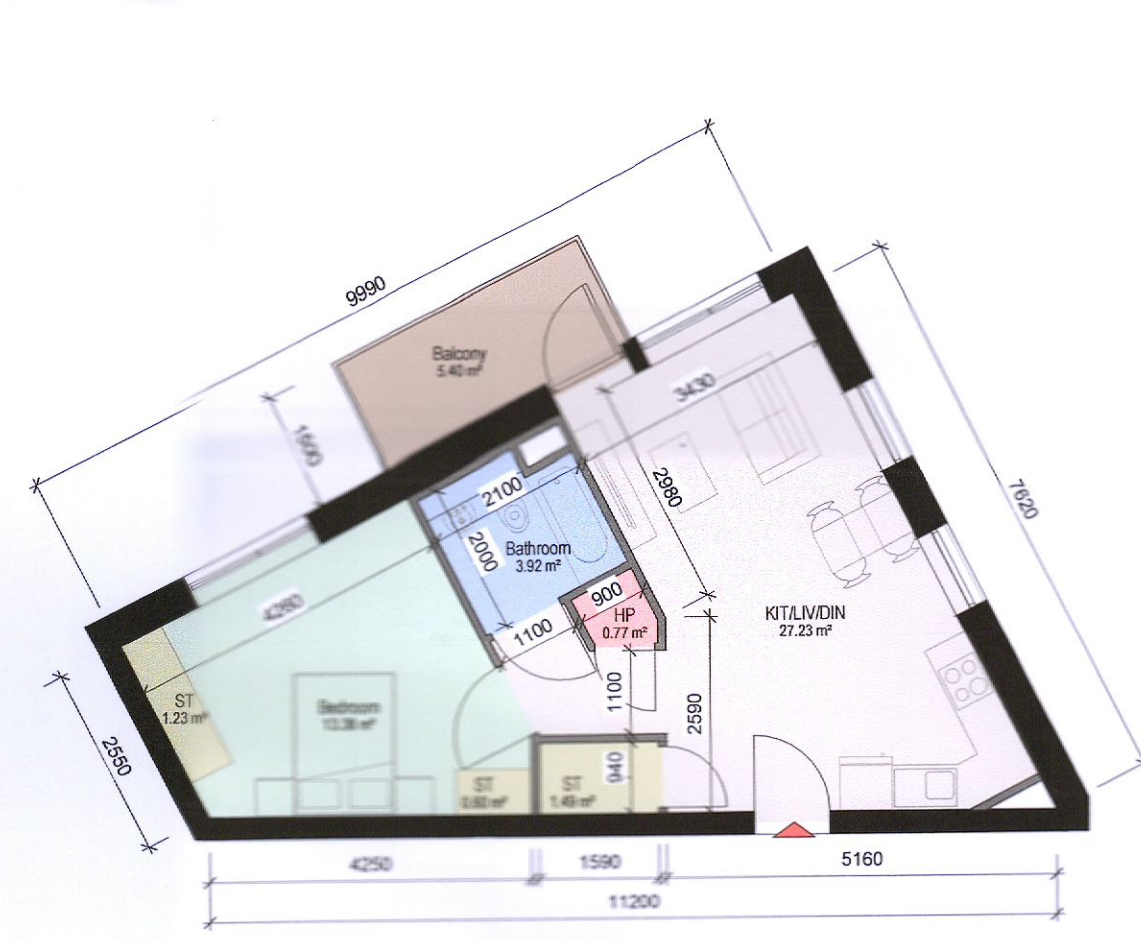
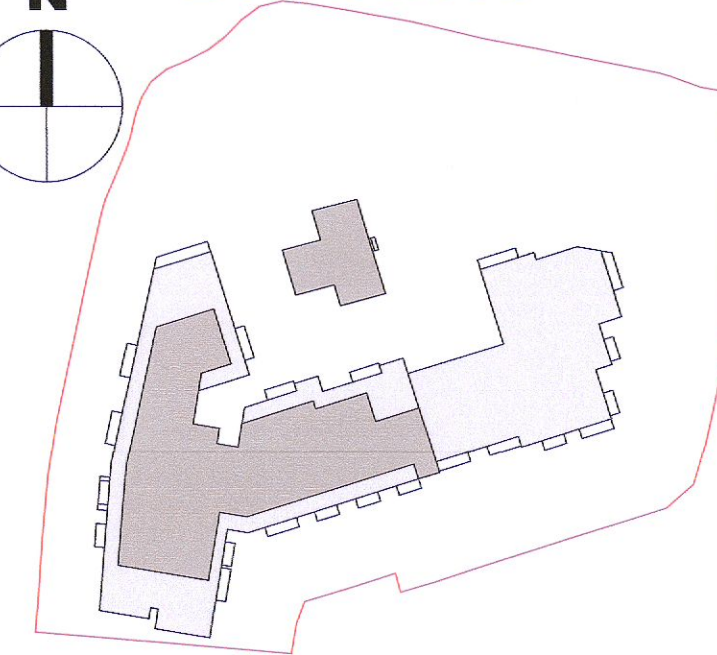
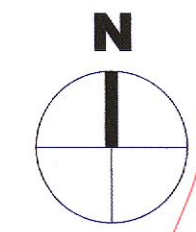
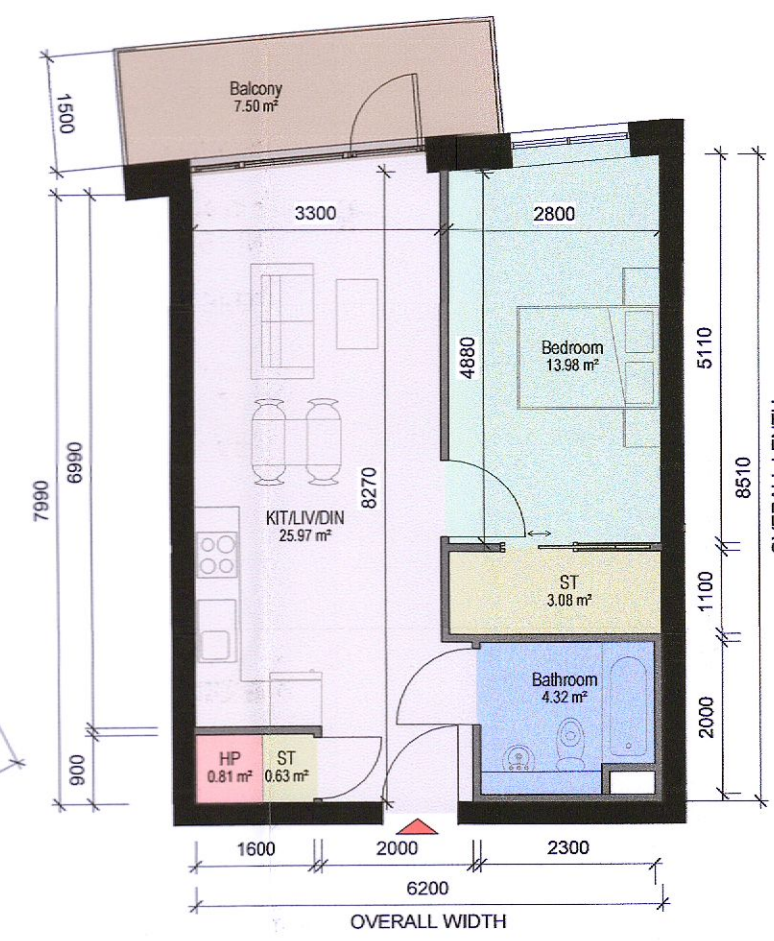


# PLANNING DRAWING



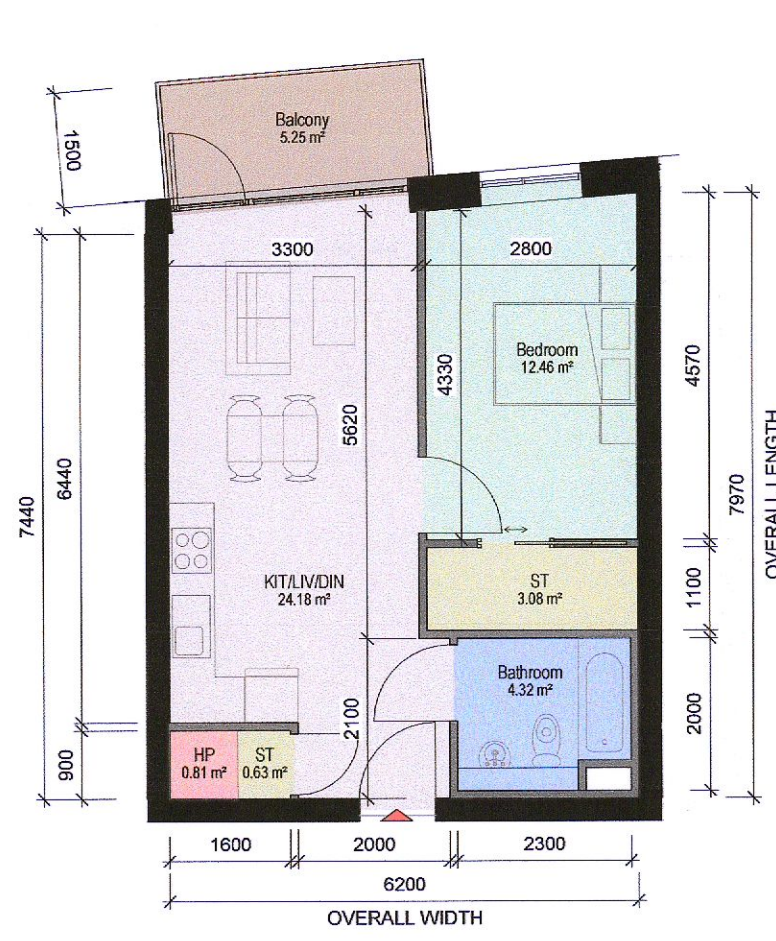
**1 APARTMENT TYPE 1A**  
1 : 100

- 1 BED, 2 PERSON APARTMENT
- NET INTERNAL AREA (NIA)  
Areas shown in plan
- GROSS INTERNAL AREA (GIA) : 50.80 sqm



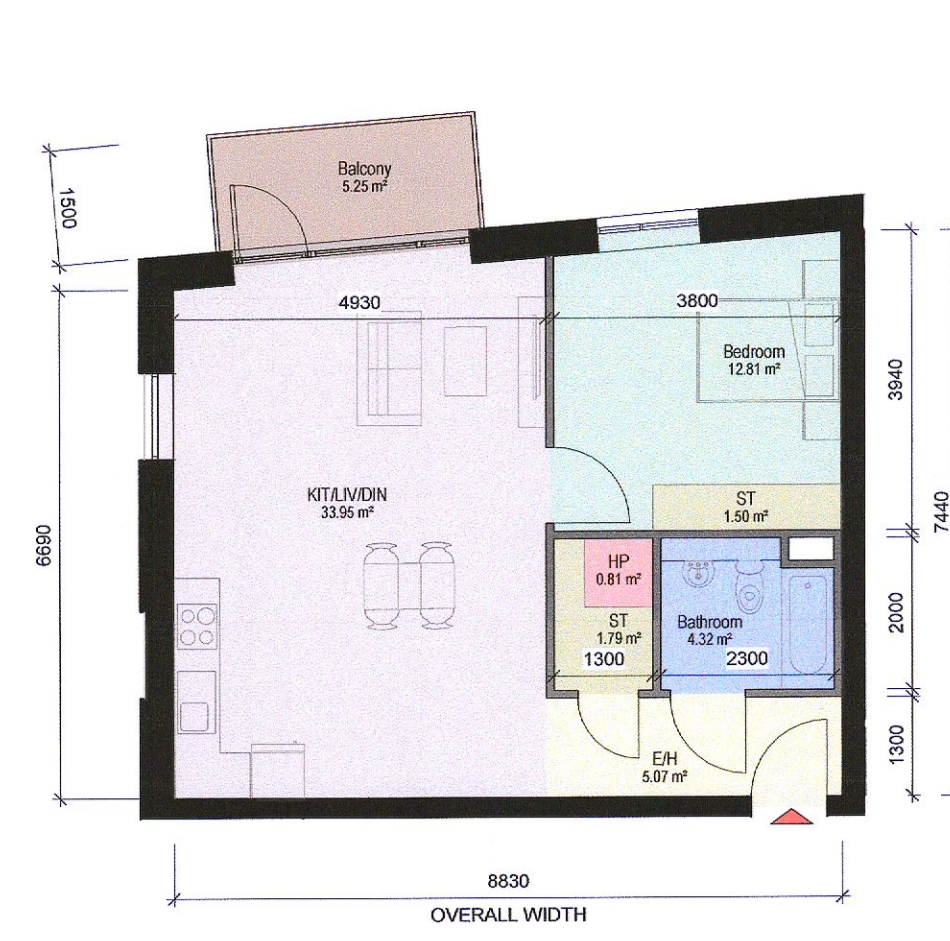
**2 APARTMENT TYPE 1B**  
1 : 100

- 1 BED, 2 PERSON APARTMENT
- NET INTERNAL AREA (NIA)  
Areas shown in plan
- GROSS INTERNAL AREA (GIA) : 51.15 sqm



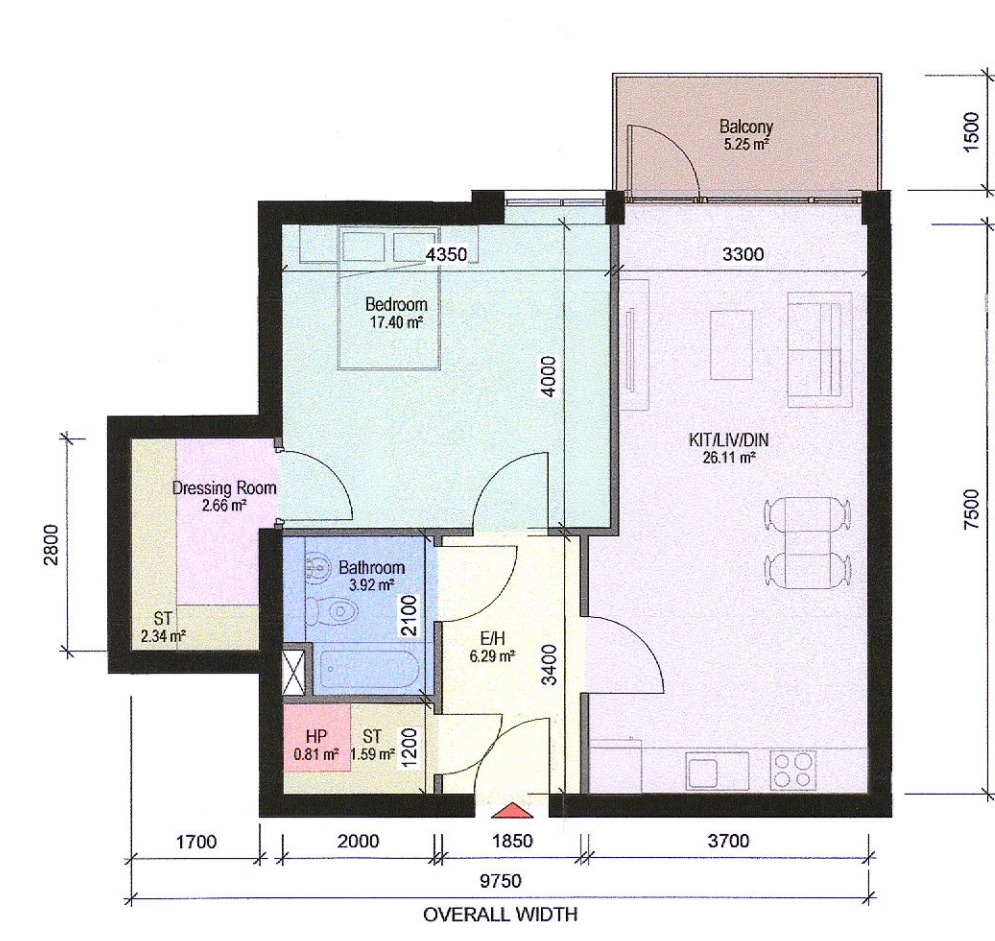
**3 APARTMENT TYPE 1C**  
1 : 100

- 1 BED, 2 PERSON APARTMENT
- NET INTERNAL AREA (NIA)  
Areas shown in plan
- GROSS INTERNAL AREA (GIA) : 47.79 sqm



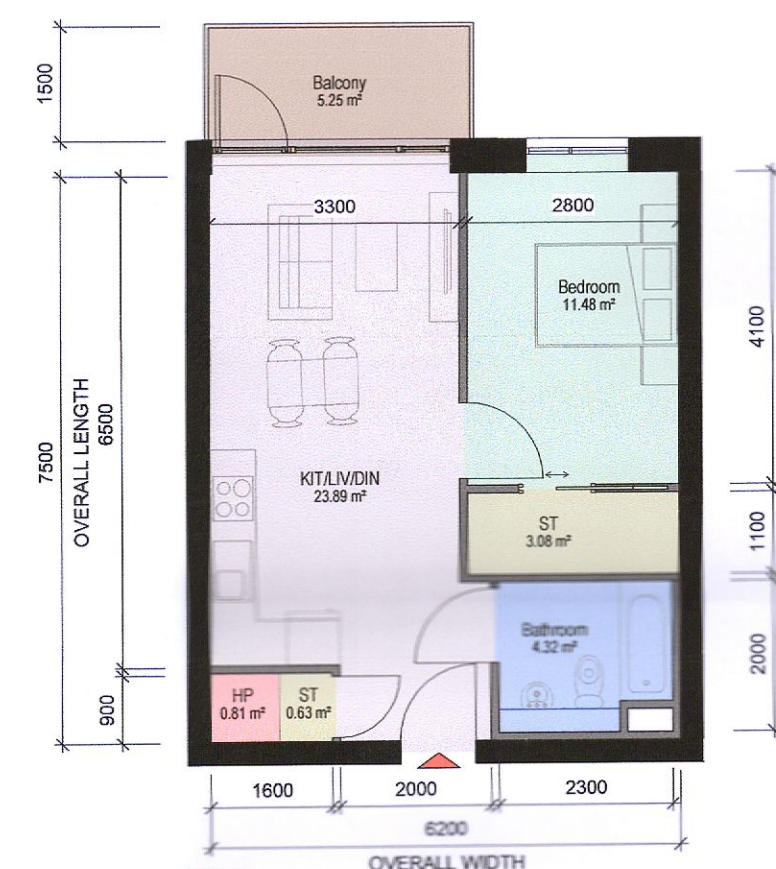
**4 APARTMENT TYPE 1D**  
1 : 100

- 1 BED, 2 PERSON APARTMENT
- NET INTERNAL AREA (NIA)  
Areas shown in plan
- GROSS INTERNAL AREA (GIA) : 62.28 sqm



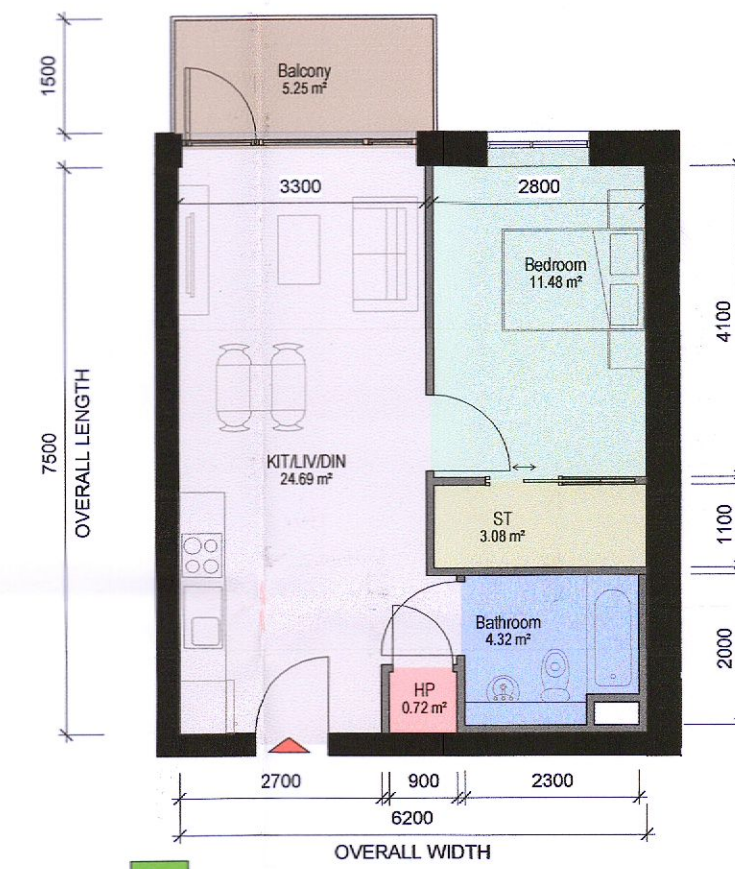
**5 APARTMENT TYPE 1E**  
1 : 100

- 1 BED, 2 PERSON APARTMENT
- NET INTERNAL AREA (NIA)  
Areas shown in plan
- GROSS INTERNAL AREA (GIA) : 63.72 sqm



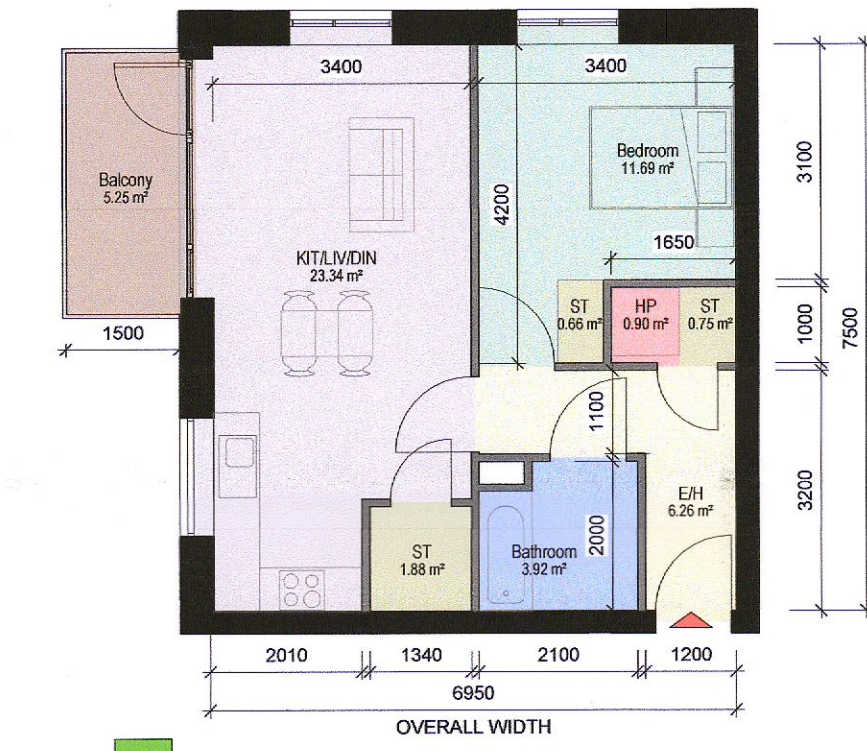
**6 APARTMENT TYPE 1F**  
1 : 100

- 1 BED, 2 PERSON APARTMENT
- NET INTERNAL AREA (NIA)  
Areas shown in plan
- GROSS INTERNAL AREA (GIA) : 46.50 sqm



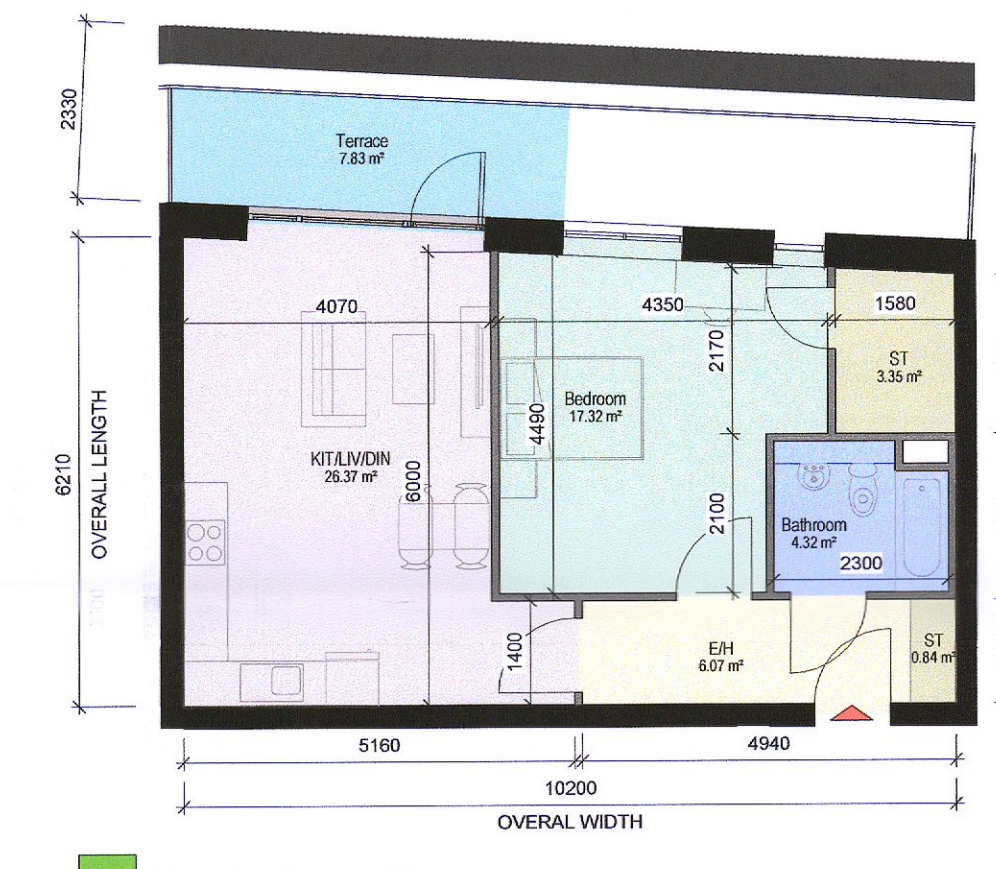
**7 APARTMENT TYPE 1G**  
1 : 100

- 1 BED, 2 PERSON APARTMENT
- NET INTERNAL AREA (NIA)  
Areas shown in plan
- GROSS INTERNAL AREA (GIA) : 46.50 sqm



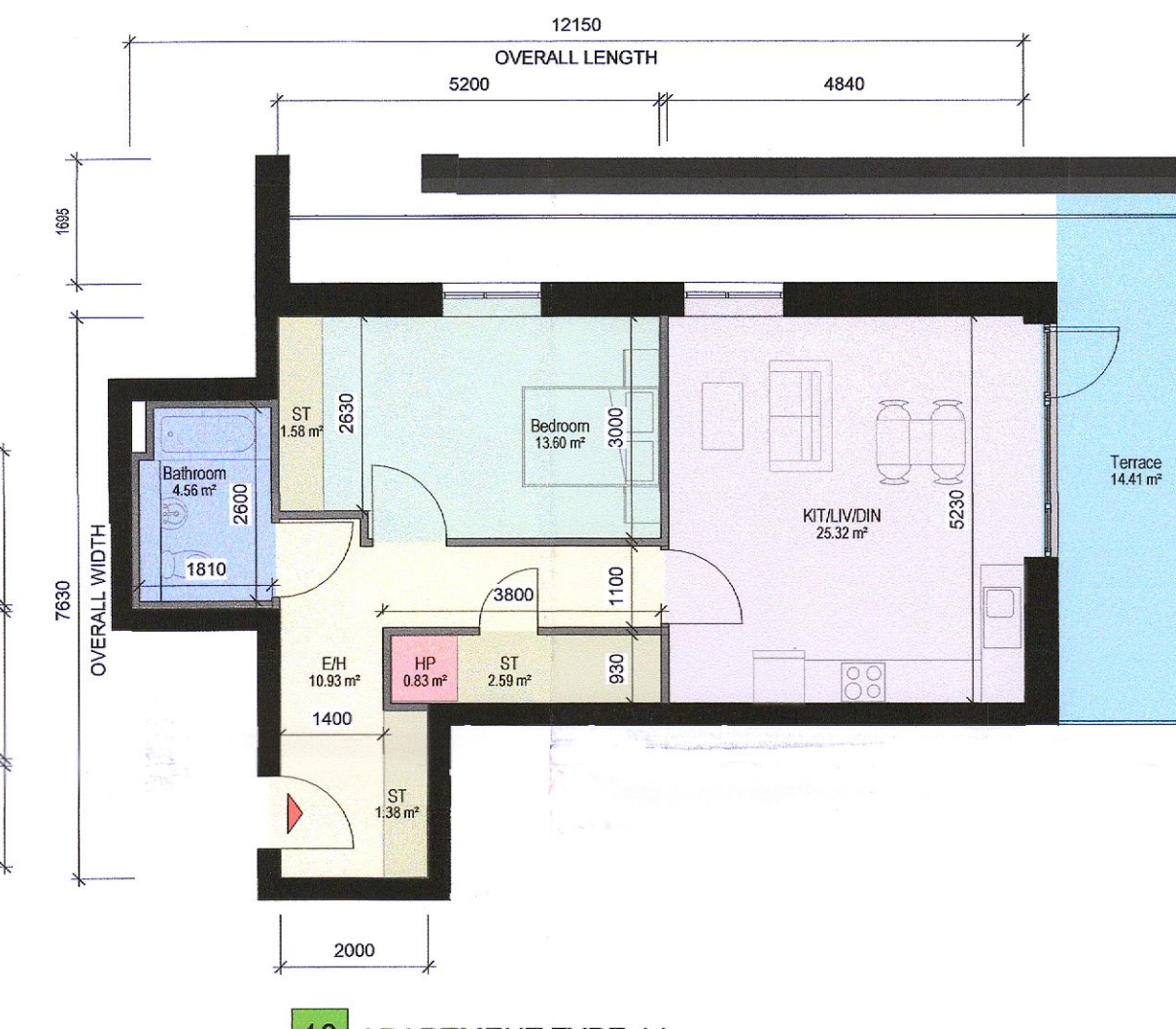
**8 APARTMENT TYPE 1H**  
1 : 100

- 1 BED, 2 PERSON APARTMENT
- NET INTERNAL AREA (NIA)  
Areas shown in plan
- GROSS INTERNAL AREA (GIA) : 51.75 sqm



**9 APARTMENT TYPE 1I**  
1 : 100

- 1 BED, 2 PERSON APARTMENT
- NET INTERNAL AREA (NIA)  
Areas shown in plan
- GROSS INTERNAL AREA (GIA) : 60.62 sqm



**10 APARTMENT TYPE 1J**  
1 : 100

- 1 BED, 2 PERSON APARTMENT
- NET INTERNAL AREA (NIA)  
Areas shown in plan
- GROSS INTERNAL AREA (GIA) : 63.46 sqm

APARTMENT ROOM LEGEND	
	BEDROOM
	KIT/LIV/DIN (KITCHEN/LIVING/DINING)
	BATHROOM
	STORE
	BALCONY
	ENTRANCE / HALL
	HP (HOT PRESS)
	DRESSING ROOM
	TERRACE

SYMBOL LEGEND	
	APARTMENT ENTRANCE
	1200mm x750mm TURNING SPACE

FLOOR PLAN KEY:

- EH - ENTRANCE HALL
- ST - STORAGE
- HP - HOT PRESS
- KIT/LIV/DIN - KITCHEN + LIVING + DINING ROOM

P01	17/10/2022	ISSUED FOR PLANNING	AM
Rev	Date	Description	Issued By

Project Stage

## PLANNING

Client:  
EMMAVILLE LTD

Project:  
SCHOLARSTOWN HOUSE D16

Drawing Title:  
PROPOSED APARTMENT TYPES -1 BED TYPES

Drawn	Checked	Paper Size	Scale	@	Date
VG	AM	A1	As Indicated	@A1	03/08/2022

Project No.	Drawing No.	Classification	Revision
PE21023	2401		P01

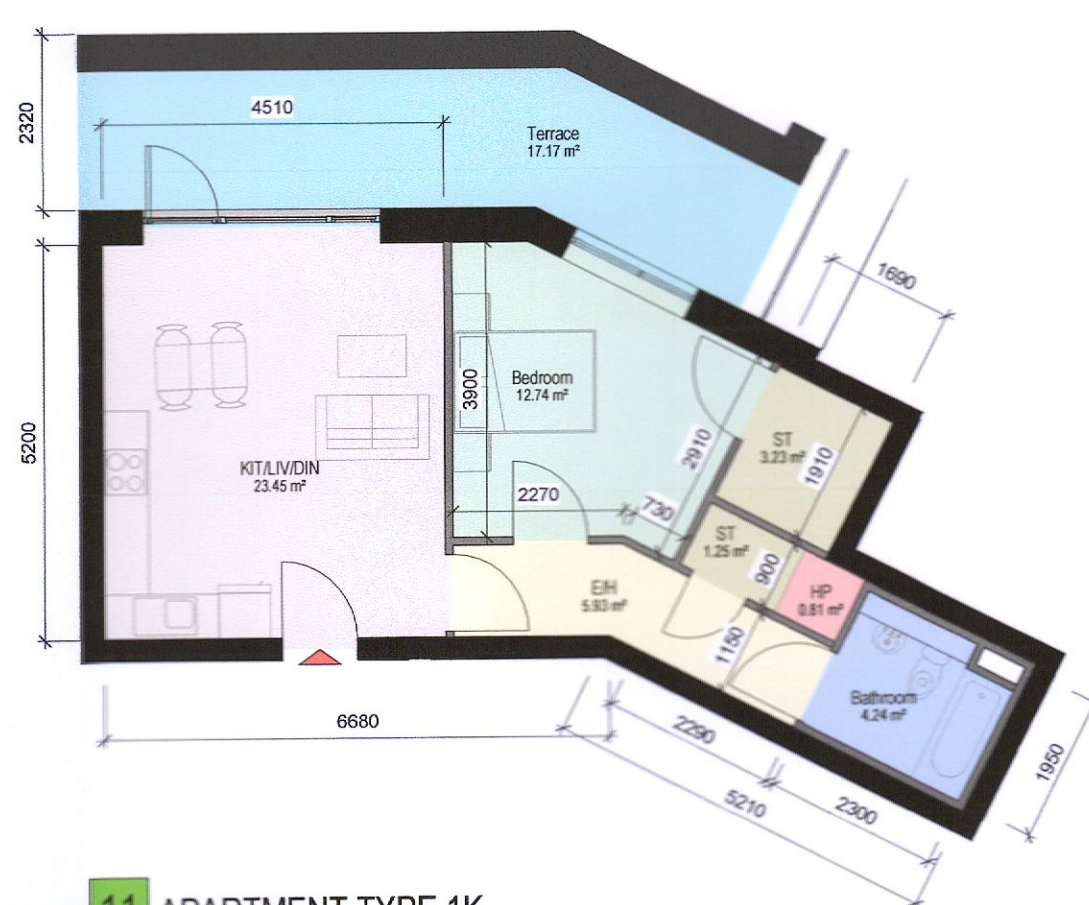
File Name:  
PE21023-CWO-ZZ-ZZ-DR-A-2401

Status:  
S3-ISSUED FOR PLANNING



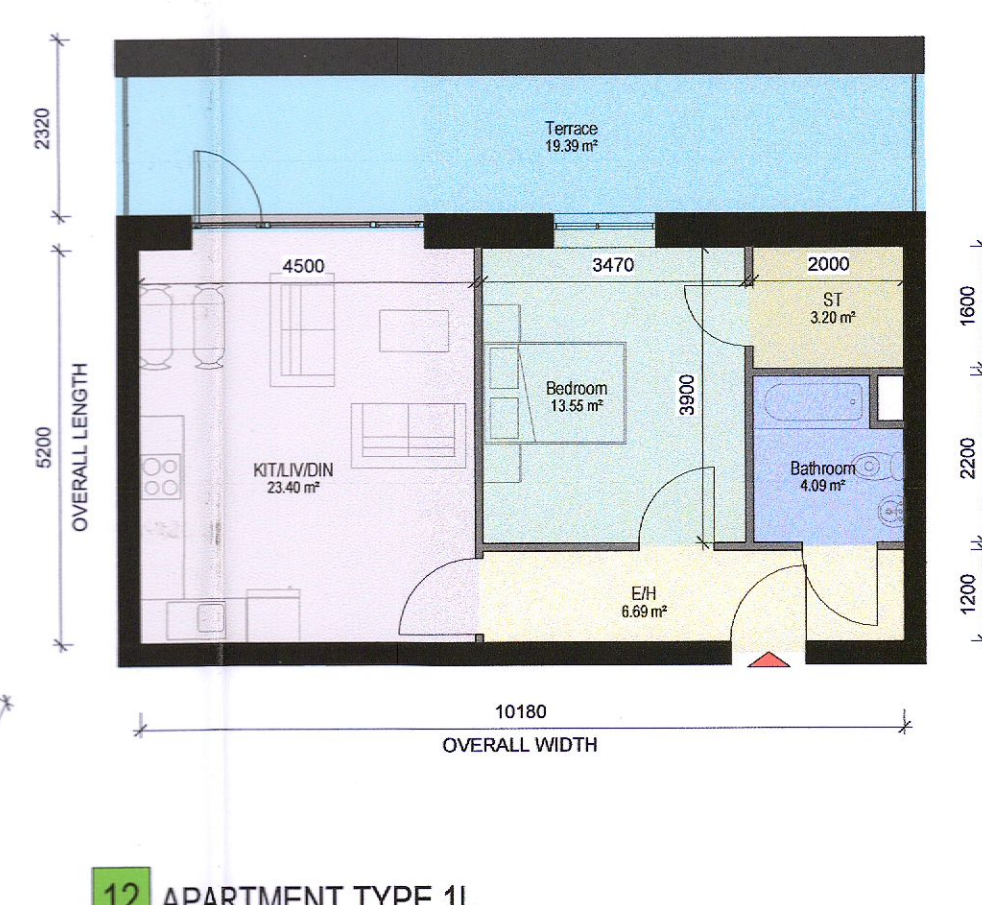
No.1 Sarsfield Quay, Dublin 7, D07 R9FH  
t: 01 518 0170 e: admin@cwoarchitects.ie  
Dublin | Cork | Galway | London | UK + Europe +  
www.cwoarchitects.ie

Please consider the environment before printing this sheet



**11 APARTMENT TYPE 1K**  
1 : 100

- 1 BED, 2 PERSON APARTMENT
- NET INTERNAL AREA (NIA)  
Areas shown in plan
- GROSS INTERNAL AREA (GIA) : 54.31 sqm



**12 APARTMENT TYPE 1L**  
1 : 100

- 1 BED, 2 PERSON APARTMENT
- NET INTERNAL AREA (NIA)  
Areas shown in plan
- GROSS INTERNAL AREA (GIA) : 52.92 sqm