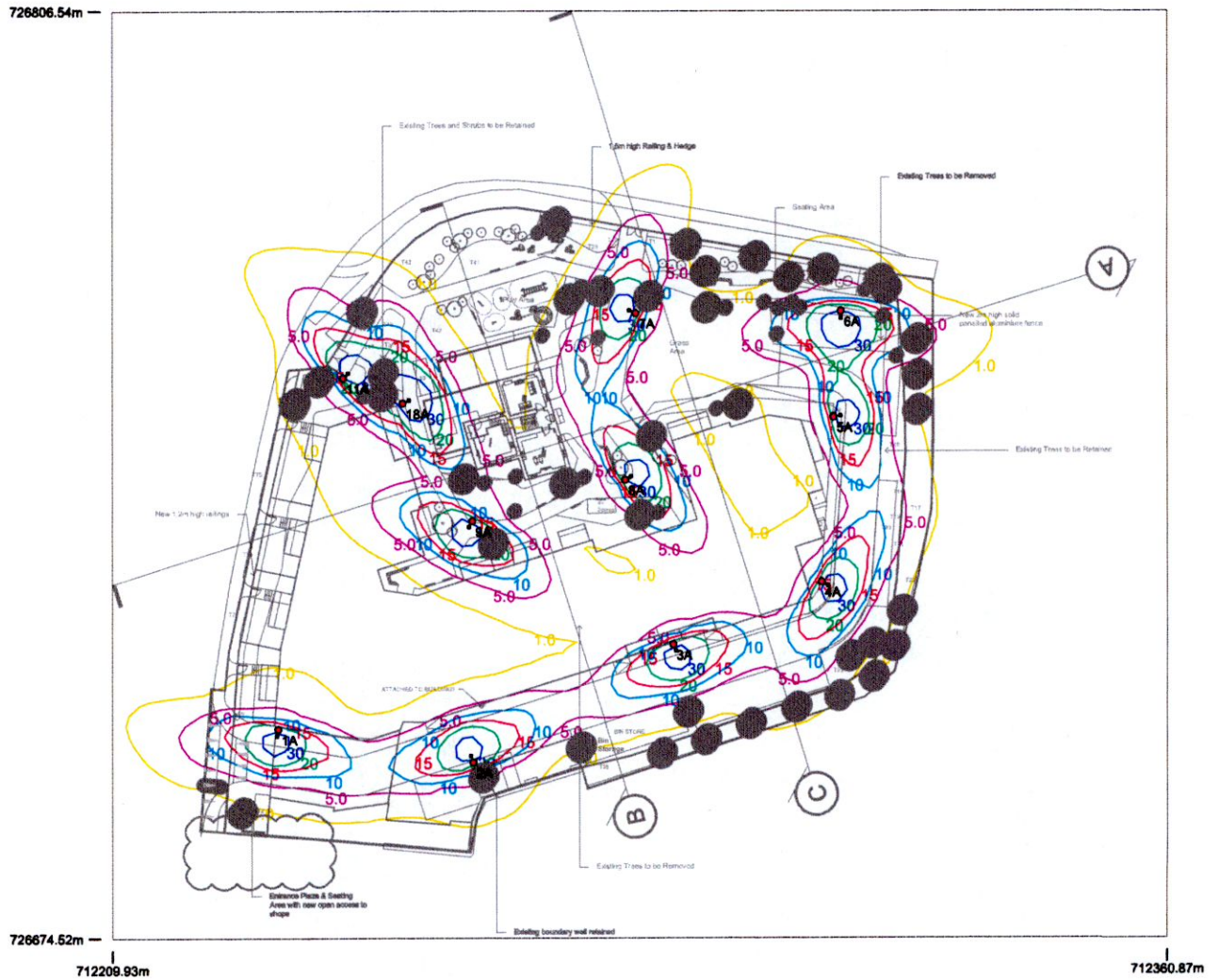


Clancy Homes – Scholarstown Residential Development

EXTERNAL LIGHTING STUDY
PROJECT NO: 21126

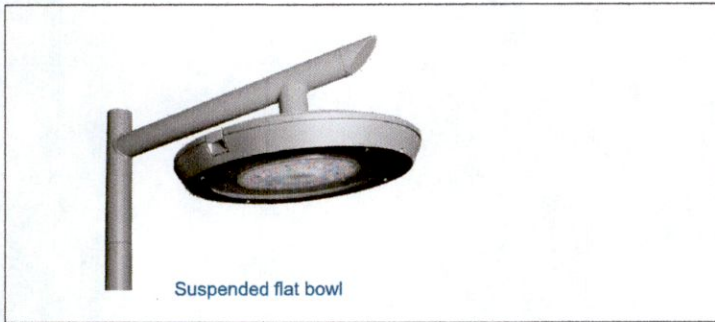
Horizontal Illuminance (lux)

Grid 1



Results

Eav	11.70
Emin	0.21
Emax	44.51
Emin/Emax	0.00
Emin/Eav	0.02



DESCRIPTION

Product name	ITEM 500
Housing	Die cast aluminium
Finish	SMOOTH, HONEYCOMB or TRAUD plate
Bowl	Thermally tempered and screen printed flat glass (VPC) Deep clear polycarbonate bowl (PHC), optional internal diffuser
Finish	Polyester powder coating, any colour available
Mechanical impact protection code	IK 10
Ingress Protection	IP66 Extruded silicone gasket Cable gland with anchoring device Breathing system with activated carbon filter
Mounting	LTO 60: Directional covering lateral top for Ø 60 mm, SM: Suspended with a threaded Nipple Ø 27 pdg (G3/4") and Ø 34 pdg, SR: Suspended with swivel joint,
Electrical class	I or II
Ambient temperature	- 40°C to + 55°C

MAINTENANCE

Maintenance: The luminaire cover can be opened without tools using the 2 flaps. The luminaire is held in the open position by a safety stay. Quick electrical disconnection without tools. Circuit board removable onsite without tools. Access to the LED sources after removal of the bowl.

SOURCES

Sources	BLS Strips (8 to 72 LED)
Colour temperature (K)	BLS Strips: 2700 K (others upon request)
CRI	> 70 (others upon request)
Luminaire SDCM	<4
LED lifetime	L90 > 100 000 h

Optics and light distribution options

Photobiology: RG1 (3000 K)

MAXIMUM PERFORMANCES (SEE ANNEX FOR ALL LED MODULES OPTIONS)

2700 K	ITEM 500 - BLS (36 LED)		
	Flux ^(A) at 700 mA (lm)	Power ^(B) (W)	Efficiency (lm/W)
	9061	75	121

(A) Output flux from the luminaire at commissioning (including thermal and optical yields compared to the Flux from sources) for given optics, maximal current and ambient temperature 25°C, as per IEC 62717 and IEC 62722 standards
(B) Total power absorbed by the luminaire including all electrical equipment, as per IEC 62717 and IEC 62722 standards.

DRIVER

Power	230 V / 240 V - 50 Hz / 60 Hz / pSurge protection 10Kv
Brand	Philips Xitanium Full Prog or OSRAM 4 DIM - D4i option (SR and DEXAL)
Power factor	90% minimum
Total harmonic distortion	15% max
Current	Dimmable current up to 1000 mA
Lifetime	10% failure at 100 000 hours
Control	DALI or 1-10V

SMARTLIGHTING (OPTIONS)

Smart-ready®	Pre-configuration, to connect communicating systems with Sensor Ready drivers, to a base in compliance with ZHAGA Book 18.
Standalone solutions	Dimming calculator from 2 to 5 slots (Dimming 5, POLEDRIIVE or POLEDRIIVE Bluetooth) Motion sensor (Motion, Motion P, Motion DALI, MD) Motion sensor combined with dimming calculator (Motion P, Motion 5, MD) Constant Light Output (CLO) Adjustable driver (POLEDRIIVE)
Local Network	Luminaires group: detection through ZIGBEE 3.0 communication protocol or pilot wires.
Telemanagement	WIZARD - ECLATEC

STANDARDS / MARKING / CERTIFICATIONS

Compliance	CE marking requirements: - Directive 2014/35/EU, Low voltage Directive - Directive 2014/130/EU Electromagnetic Compatibility - Directive 2011/65/EU Restriction of Hazardous substances (RoHS) - Directive 2009/125/EC Ecodesign requirements
NF EN 13201	In accordance with the lighting calculations issued.
REACH	Products conformity regulatory management of chemicals
WEEE	(Waste Electrical and Electronic Equipment) Manufacturer involvement

WARRANTY

According to our general sales conditions



Configuration

Height of
column 6m