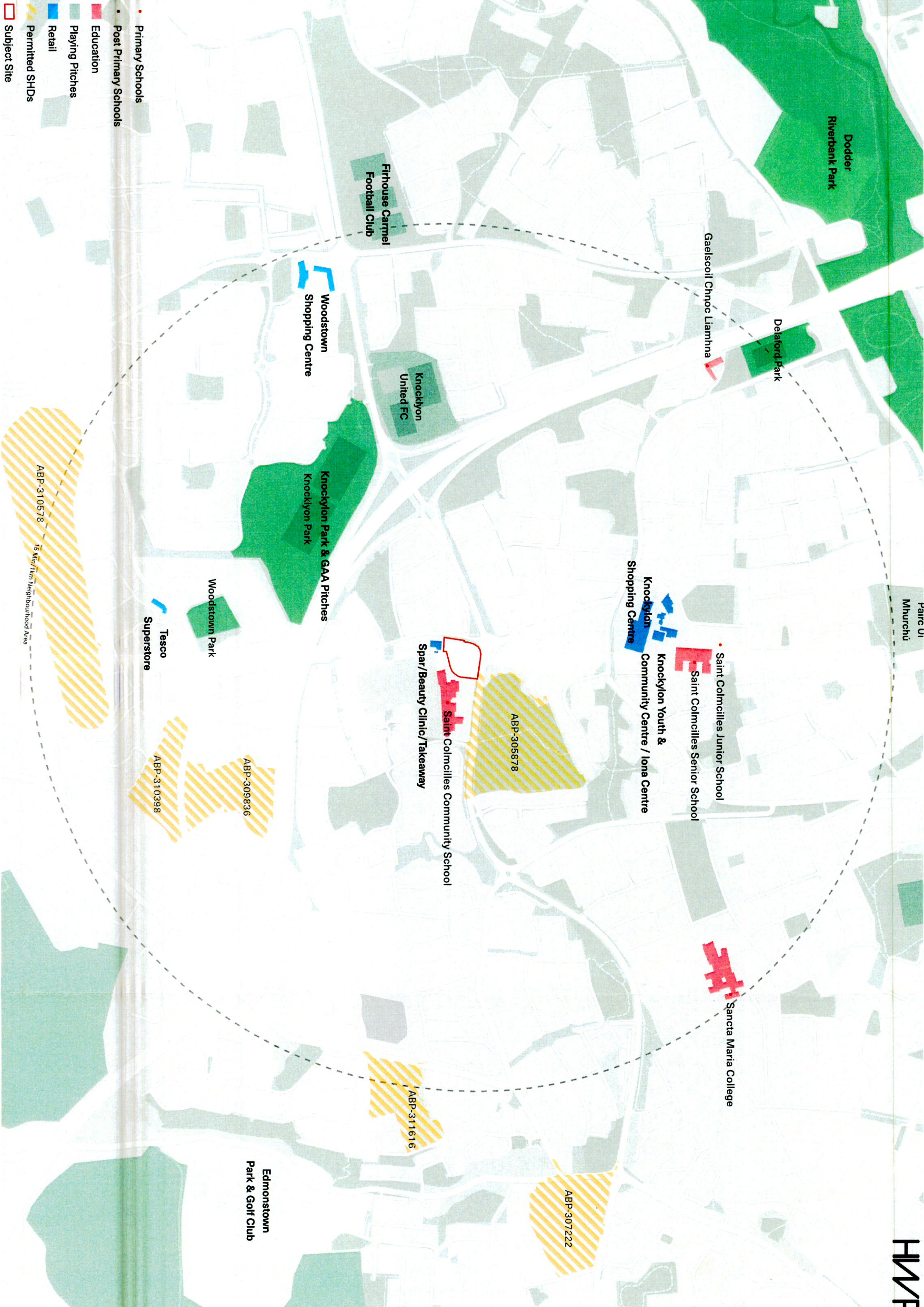
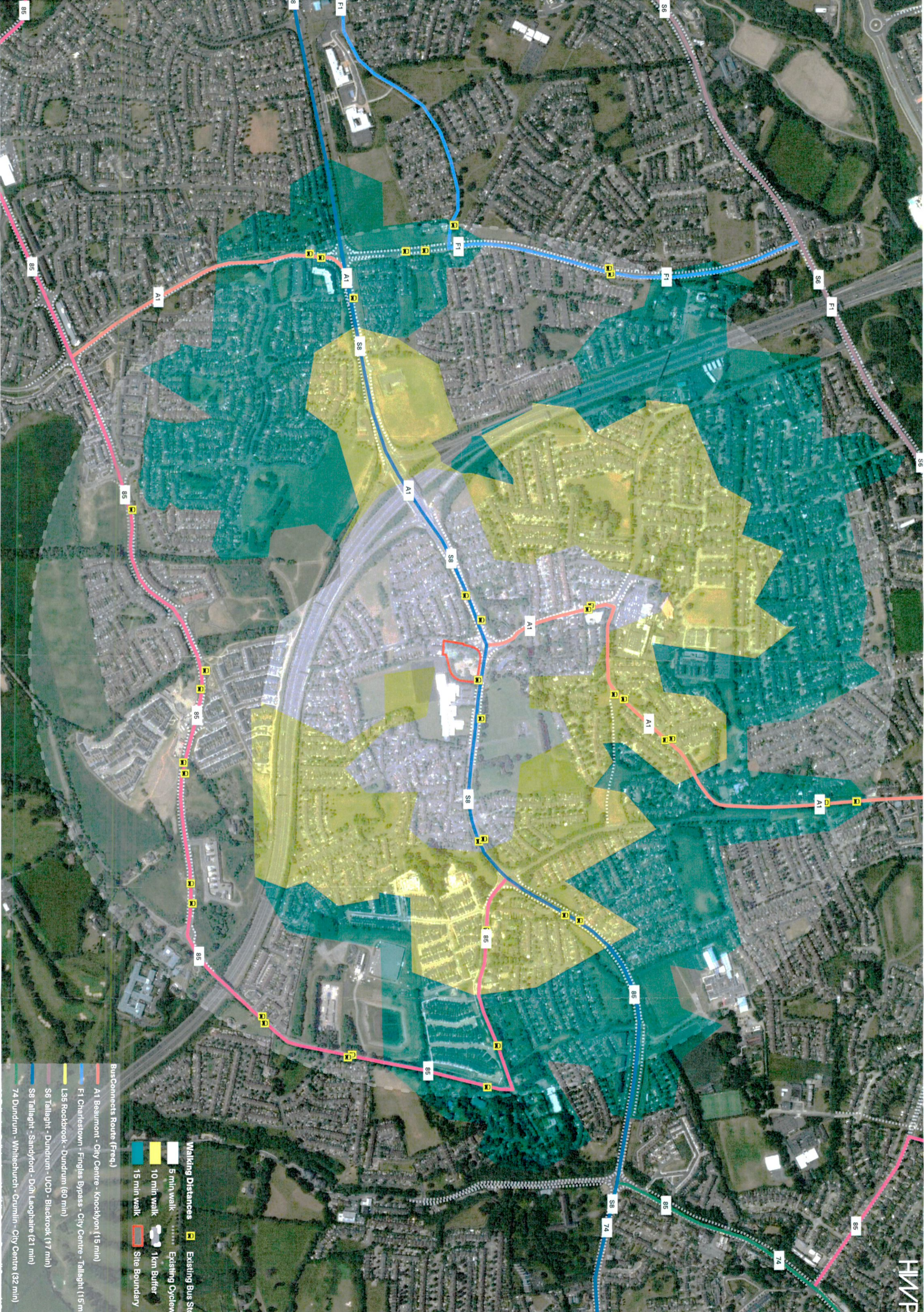


- Primary Schools
- Post Primary Schools
- Education
- Playing Pitches
- Retail
- Permitted SHDs
- Subject Site





- BusConnects Route (Freq.)**
- A1 Beaumont - City Centre - Knocklyon (15 min)
 - F1 Charlestown - Finglas Bypass - City Centre - Tallaght (15 min)
 - L35 Rockrook - Dundrum (60 min)
 - S6 Tallaght - Dundrum - UCD - Blackrock (17 min)
 - S8 Tallaght - Sandyford - Dún Laoghaire (21 min)
 - 74 Dundrum - Whitechurch - Crumlin - City Centre (32 min)
- Walking Distances**
- 5 min walk
 - 10 min walk
 - 15 min walk
- Other Features**
- Existing Bus Stop
 - Existing Cycleway
 - 1km Buffer
 - Site Boundary